

反面

折位线

折位线

折位线

折位线

折位线

折位线

User Manual

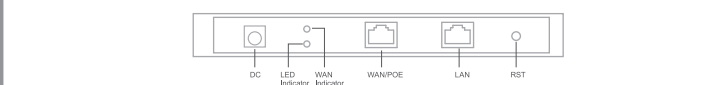
1/Product introduction

LED indicator instructions

On LED Indicator	Name	Normal Status	Indication
	System Light	Green Light	System boots up successfully
	WiFi Light	Blue Light	WiFi boots up successfully
Three LED Indicator	Name	Normal Status	Indication
	System Light	Flashing	System boots up successfully
	2.4G Light	Flashing	System reset default
	5.8G Light	Flashing	2.4G Wireless boots up successfully
3.8G Wireless boots up successfully			

*The number of LEDs for different models of ceiling mount AP will be different, please refer to the actual product.

Ports Instructions



Ports & Buttons	Ports Instructions
DC	Power port
LAN	LAN indicator will be bright when Ethernet cable is connected
WAN	Reset button will make device revert to factory settings, press it for 10 seconds when powered, device will reboot
Reset	Reset button will make device revert to factory settings, press it for 10 seconds when powered, device will reboot
WAN	Connect WAN internet, WAN port connect to ADSL modem or community broadband cable, under AP, register mode, WAN port will be changed to LAN port
LAN	LAN port which can connect LAN device

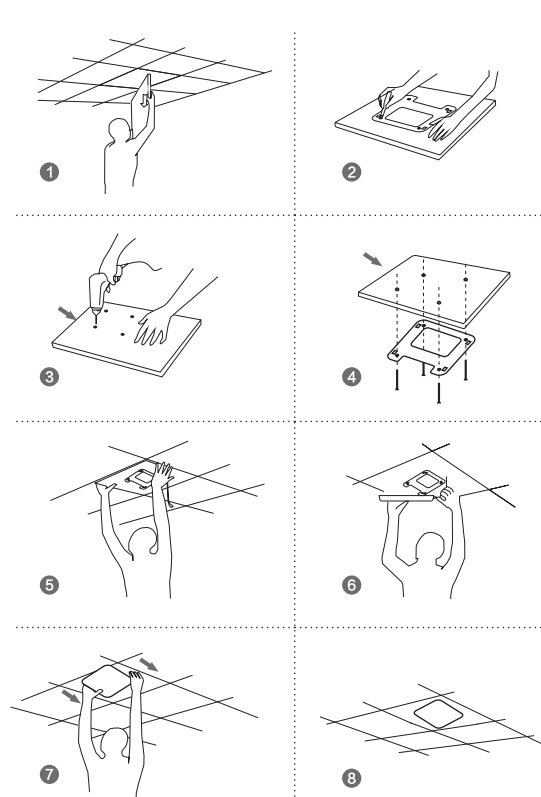
*The interface for different models of products may be different, the above diagram is only for reference, please refer to the actual product.

Operational environment

Suitable for safe use in areas below to 2000 meters based on sea level

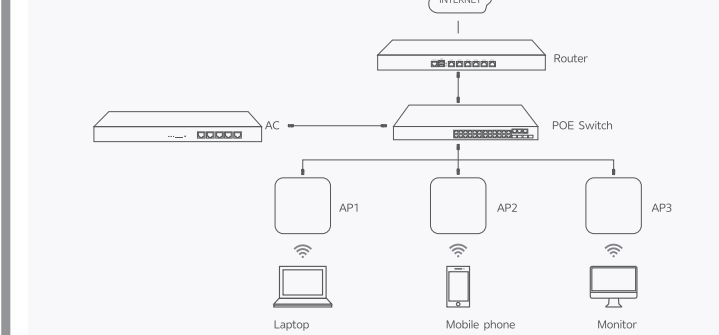
Only suitable for safe use in non-tropical climatic conditions

2/Device installation

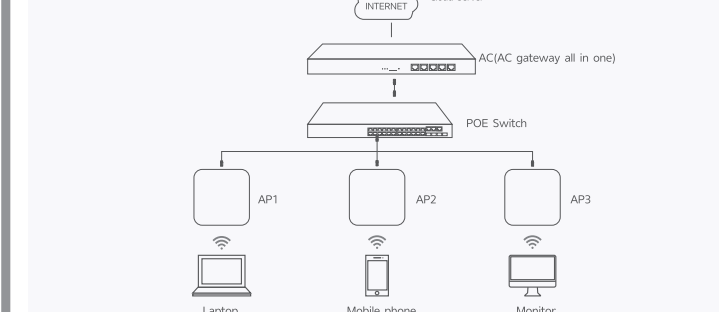


3/Device connection

Bypass mode topology



AC Gateway mode topology



⚠ Tips: If the AP support 24V PoE, pls use 24V PoE switch or PoE adapter; if the AP is a standard active 48V PoE device Please use a switch that supports IEEE802.3at standards. When deploy a large wireless network, there are many APs in this network, recommend use an AC wireless controller in the network to centrally manage all AP in the network.

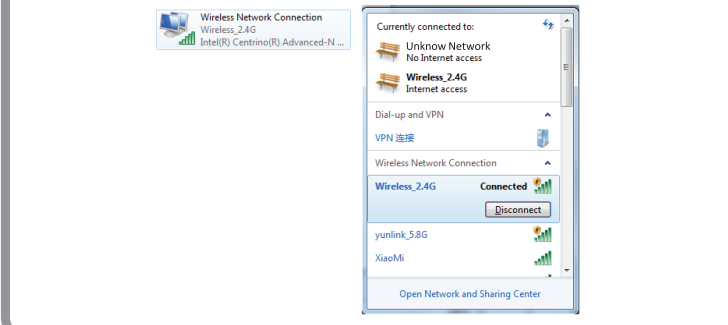
折位线

4/Device management

Web login Management

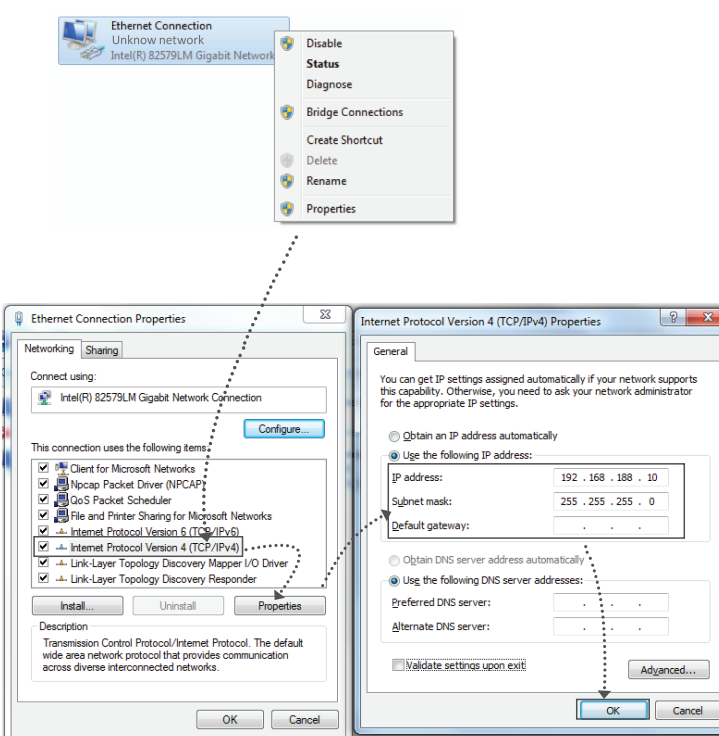
Connect to PC by wireless

(1). To connect a device wirelessly, you need to set the IP address of the TCP/IP property of the wireless network card to 192.168.188.X (X is number of 2--252) first, so that the device and PC in the same IP segment, and set the subnet mask to 255.255.255.0, as shown in the following picture:



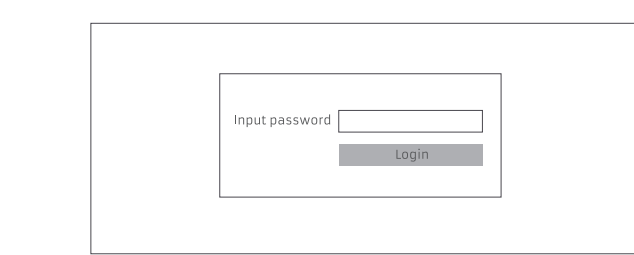
Connect PC by wired

Using the wired connection, set the IP address of the TCP/IP property of the wireless network card to 192.168.188.X (X is number of 2--252), the PC will be the same IP segment as AP.

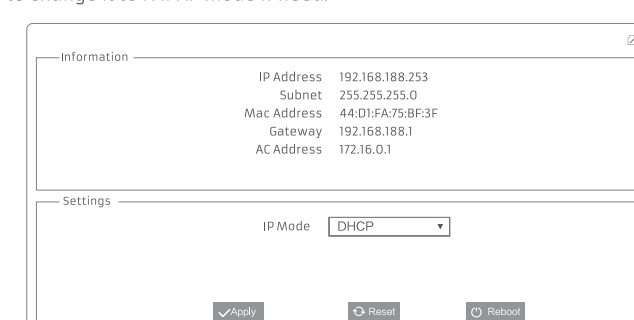


AP mode

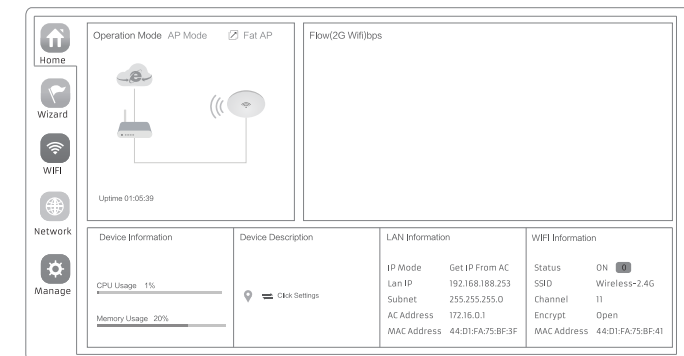
1. Use Internet Explorer to visit <http://192.168.188.253>, pop up the login screen shown in the following picture, the default login password: admin, after completing it will go to the wireless AP settings page.



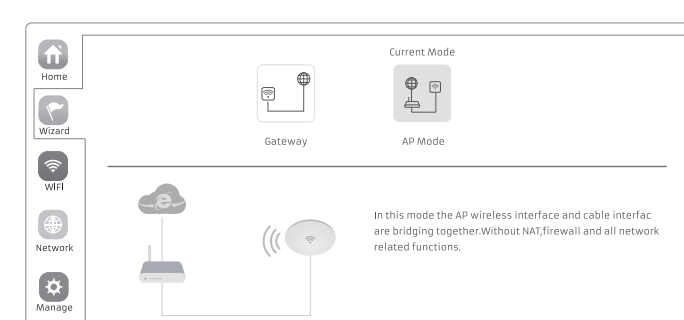
2. Default is fit AP mode page, users need to click the button at the right corner to change it to FAT AP mode if need.



3. FAT AP mode home page is as below:



4. Setup Wizard page, choose AP mode as the current working mode.



Common Problem and Solution

Q1: Forget login name and password?

A1: Reset to factory default, press the reset button for 10 seconds and release it, the device will reboot and revert to factory default settings

Q2: Can not login wireless AP management through WEB page?

A2: 1. Check if PC with static IP and if this IP is in the same IP segment of AP, make sure not set to other IP range.
2. Reset AP and re-connect to AP.
3. Make sure wireless AP IP address is 192.168.188.253 and not occupied by other devices.
4. Check if there is something wrong with PC and Ethernet cable, recommend use CAT 5 unshielded Twisted cable.

Q3: Forget wireless network password?

A3: 1. Connect AP by wired, login WEB management page-click wireless settings-basic settings-password-set a new password for wireless network.
2. Reset it, the default password is 66666666.

Q4: Can not get IP Address?

A4: 1. Under gateway and WSP mode, check if DHCP server is on
2. Under repeater and AP mode, check if upper network connection is normal, or if LAN network DHCP server is working well.

Q5: How to change FIT AP to FAT AP?

A5: Switch FAT and FIT mode by clicking the button at right corner, then device will reboot. After rebooting, please clear cookie and then login.
NOTE: Once the device is switched to FAT AP mode, the default mode is FIT AP mode.

Q6: AC device list can not get AP devices?

A6: The mode for AC controller and AP are different, AC controller with model prefixed IN-A is used to control FAT AP, the model prefixed in FAC or BW is used to control FIT AP.
NOTE: All the AP support both FAT and FIT AP mode, the default mode is FIT AP mode.

*This manual is only used for instructions and provide as accurate as we can, but can not make sure all the information in this manual is correct. This manual may be updated because of the products upgrade have the right to revise the manual without any notice.

FCC Warning Statement

Changes or modifications not expressly approved by the party responsible for compliance could void the user's authority to operate the equipment. This equipment has been tested and found to comply with the limits for a Class B digital device, pursuant to Part 15 of the FCC Rules. These limits are designed to provide reasonable protection against harmful interference in a residential installation. This equipment generates uses and can radiate radio frequency energy and, if not installed and used in accordance with the instructions, may cause harmful interference to radio communications. However, there is no guarantee that interference will not occur in a particular installation. If this equipment does cause harmful interference to radio or television reception, which can be determined by turning the equipment off and on, the user is encouraged to try to correct the interference by one or more of the following measures:

- Reorient or relocate the receiving antenna.
- Increase the separation between the equipment and receiver.
- Connect the equipment into an outlet on a circuit different from that to which the receiver is connected.
- Consult the dealer or an experienced radio/TV technician for help.

This device complies with part 15 of the FCC Rules. Operation is subject to the following two conditions:

- (1) This device may not cause harmful interference, and
- (2) this device must accept any interference received, including interference that may cause undesired operation.

RF Exposure Statement

To maintain compliance with FCC's RF Exposure guidelines, this equipment should be installed and operated with minimum distance of 20cm the radiator your body. This device and its antenna(s) must not be co-located or operation in conjunction with any other antenna or transmitter.

背面

正面

折位线