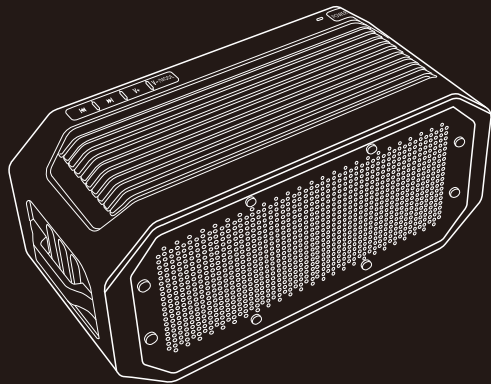
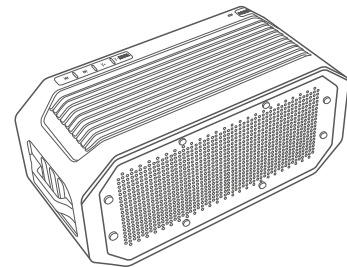


WATERPROOF BLUETOOTH SPEAKER WITH POWER BANK



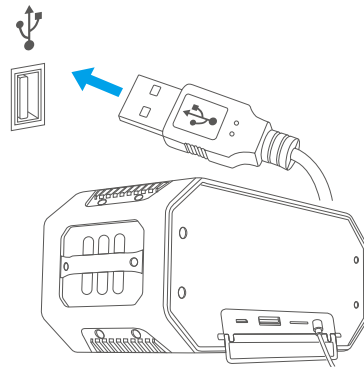
PS: Please charge the speaker every three months if the speaker doesn't play for a long time

1. What's in the box



Bluetooth speaker, 2-in-1 USB power cable charging kits, line in cable.

2. Charging the Bluetooth speaker



To charge your speaker, connect the USB power cable to the micro USB port on the speaker and connect the other end to your computer's USB port. Whilst charging, the LED indicator will turn red. When fully charged, the red LED indicator will turn off. It will take up to 4 hours to fully charge the speaker.

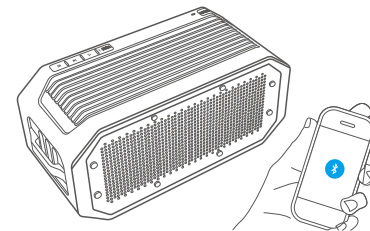
3. Turning the speaker on and off

To turn the speaker on, press and hold the power button for 3 seconds. The speaker will beep and the blue LED will turn on and flash.

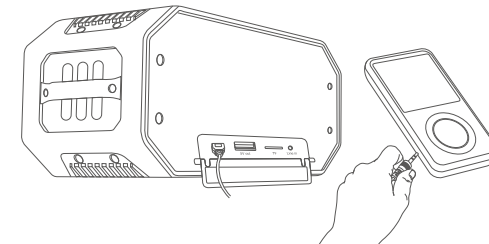
To turn the speaker off, press and hold the power button for 3 seconds. The blue LED will turn off.

4. Playing music via Bluetooth

Turn the speaker on and then locate the speaker on your Bluetooth device and connect. If the Bluetooth device asks for a connection code, use 0000 or 1234. Once connected to your device, the blue LED will flash once every 5 seconds. When playing music, the controls will stop flashing and remain solid blue.

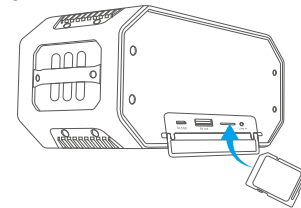


5. Playing music via the line in cable



Connect the line in cable to the speaker's micro USB port and the other end to the audio source. Turn the speaker on and then press and hold the V -button for 2 seconds to enter line in mode. Please note: only the volume controls work when connected via line in; you cannot skip or pause tracks.

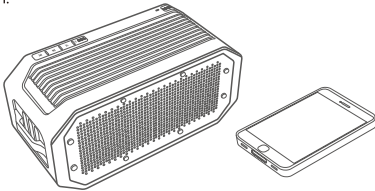
6. Playing music via the microSD card



Use your computer to transfer music files to your microSD card. The speaker recognizes MP3 audio files. Turn the speaker on and insert your microSD card into the microSD slot. The speaker will change to microSD mode and the music will start to play automatically.

7. Connecting using NFC

To connect to the speaker using NFC you must have previously paired to the speaker via Bluetooth and NFC must be enabled on your device. After you have paired once you do not need to pair again. With the speaker turned on and in Bluetooth mode hold your phone over the top of the speaker within a 1cm distance. The speaker and device will automatically connect and you can move your device away from the speaker. To disconnect hold the phone over the top of the speaker again.

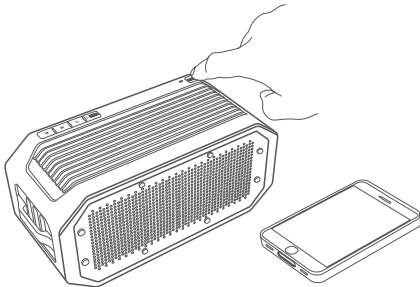


8. Guide to the controls

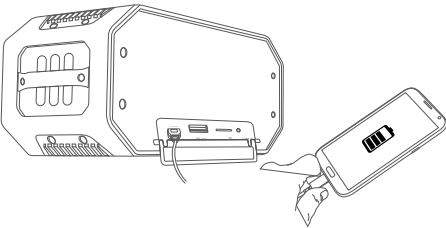
- V+ Press once to increase the volume
- V- Press once to reduce the volume
- Press and hold for 2 seconds to skip between modes
- ⏮ Press once to play
- ⏮ Press once to pause
- ⏭ Press once to the next song
- ⏮ Press once to the previous song

9. Answering a phone call

To answer a phone call press the ⏮ button. The music will automatically pause. Press the ⏮ button again to end the phone call. The music will automatically restart.



10. Charging your mobile device using the speaker



Connect your device's USB cable to the back of the speaker and the other end to your device. Your mobile device will start to charge. The speaker can charge your device when it is either off or on. Whilst charging your device you can still use the Bluetooth, line in or microSD modes at the same time.

Specifications

Speaker Output	2 x 4 watt
Battery Capacity	6000 mAh
Battery Charge Time	4 hours
Play time (Bluetooth)	16 hours
Play time (microSD)	18 hours
Play time (line in)	20 hours
Bluetooth range	10 metres
Bluetooth version	4.0
Bluetooth support	A2DP, AVRCP
Max. microSD card capacity	16 GB microSD card
File format (for music files)	MP3
Waterproof rating	IPX6

FCC STATEMENT :

This device complies with Part 15 of the FCC Rules. Operation is subject to the following two conditions:

- (1) This device may not cause harmful interference, and
- (2) This device must accept any interference received, including interference that may cause undesired operation.

Warning: Changes or modifications not expressly approved by the party responsible for compliance could void the user's authority to operate the equipment.

NOTE: This equipment has been tested and found to comply with the limits for a Class B digital device, pursuant to Part 15 of the FCC Rules.

These limits are designed to provide reasonable protection against harmful interference in a residential installation. This equipment generates uses and can radiate radio frequency energy and, if not installed and used in accordance with the instructions, may cause harmful interference to radio communications. However, there is no guarantee that interference will not occur in a particular installation. If this equipment does cause harmful interference to radio or television reception, which can

be determined by turning the equipment off and on, the user is encouraged to try to correct the interference by one or more of the following

measures:

- Reorient or relocate the receiving antenna.
- Increase the separation between the equipment and receiver.
- Connect the equipment into an outlet on a circuit different from that to which the receiver is connected.
- Consult the dealer or an experienced radio/TV technician for help.

RF warning statement:

The device has been evaluated to meet general RF exposure requirement. The device can be used in portable exposure condition without restriction.