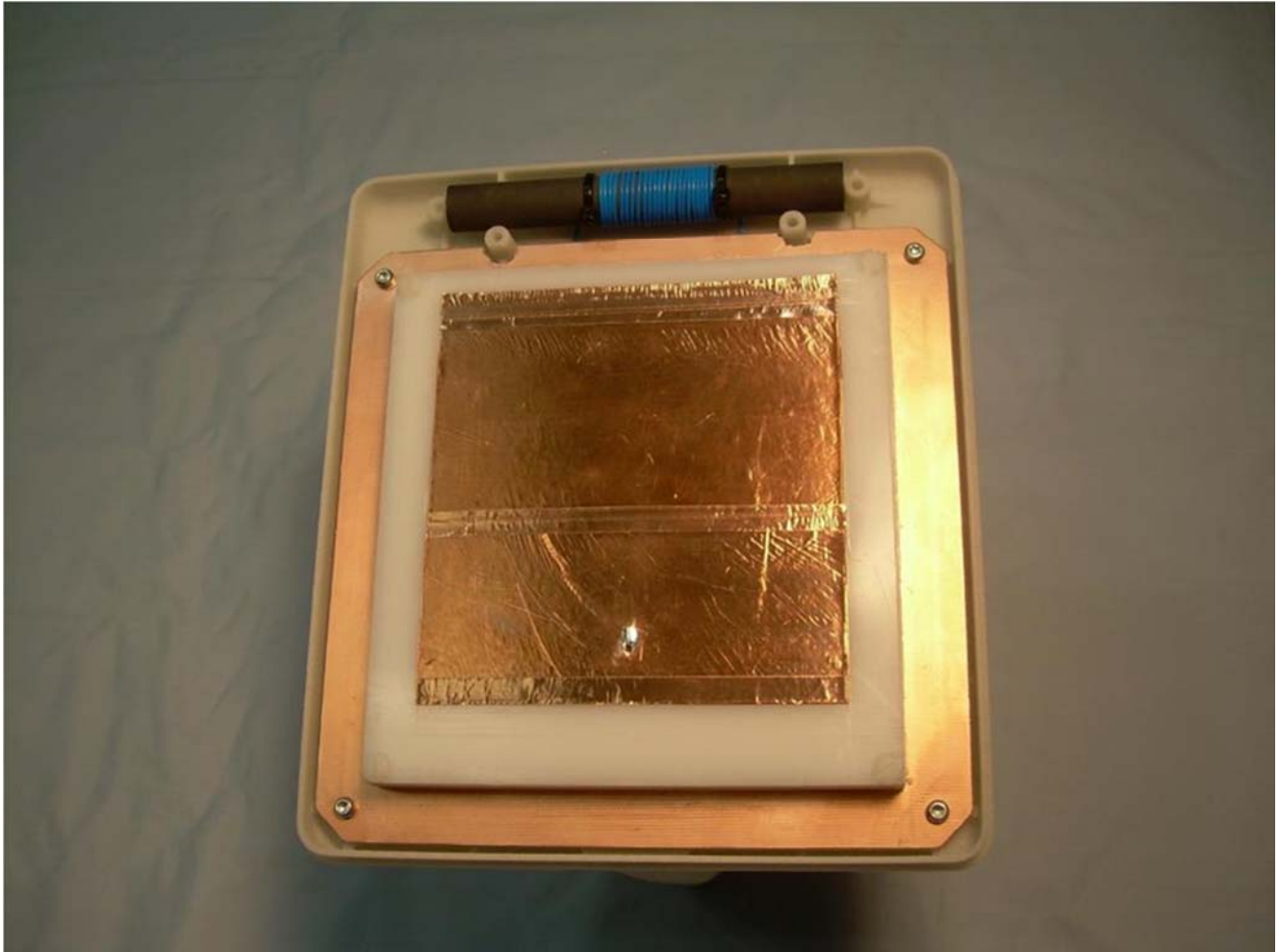
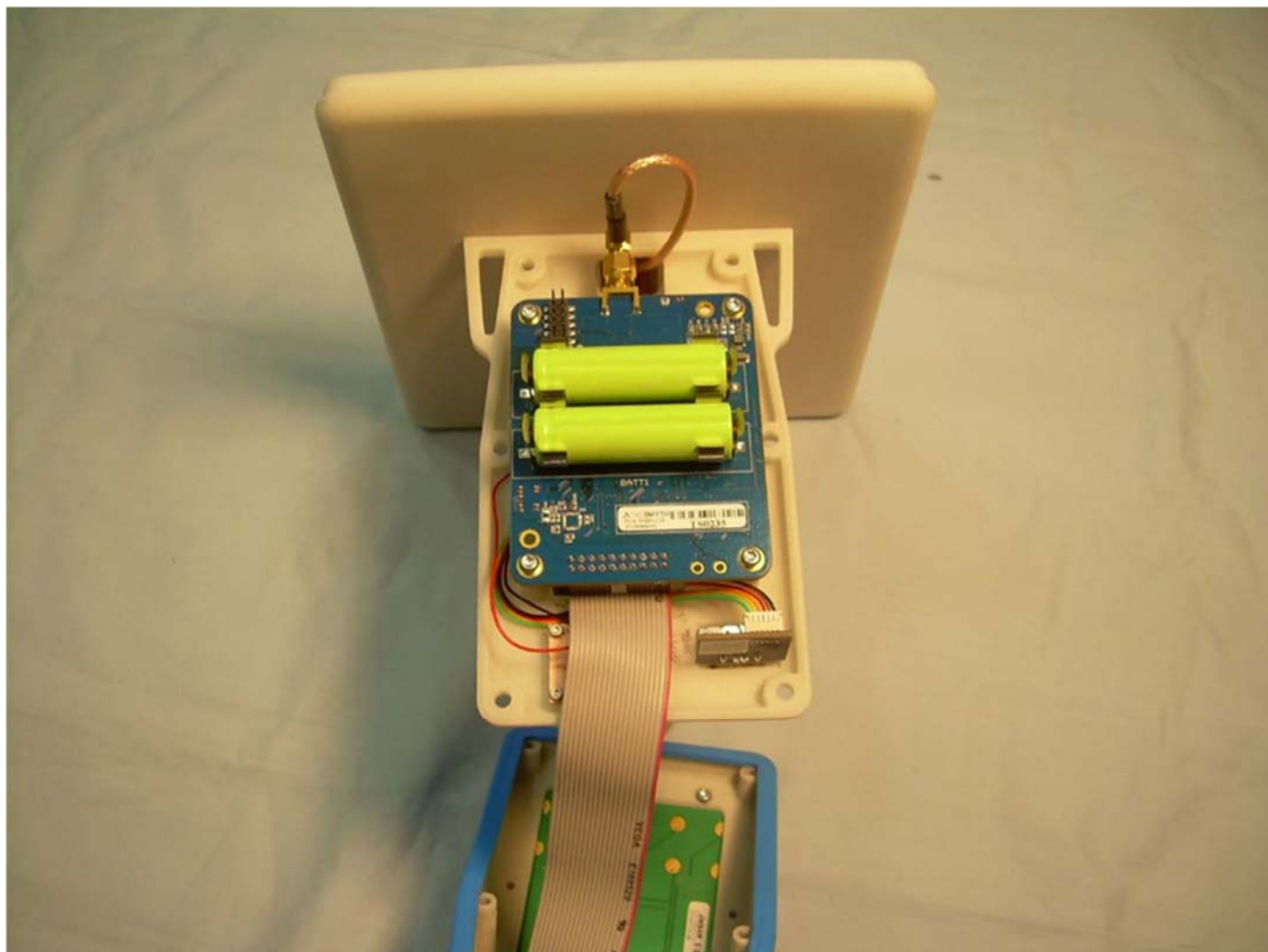


Internal Photographs

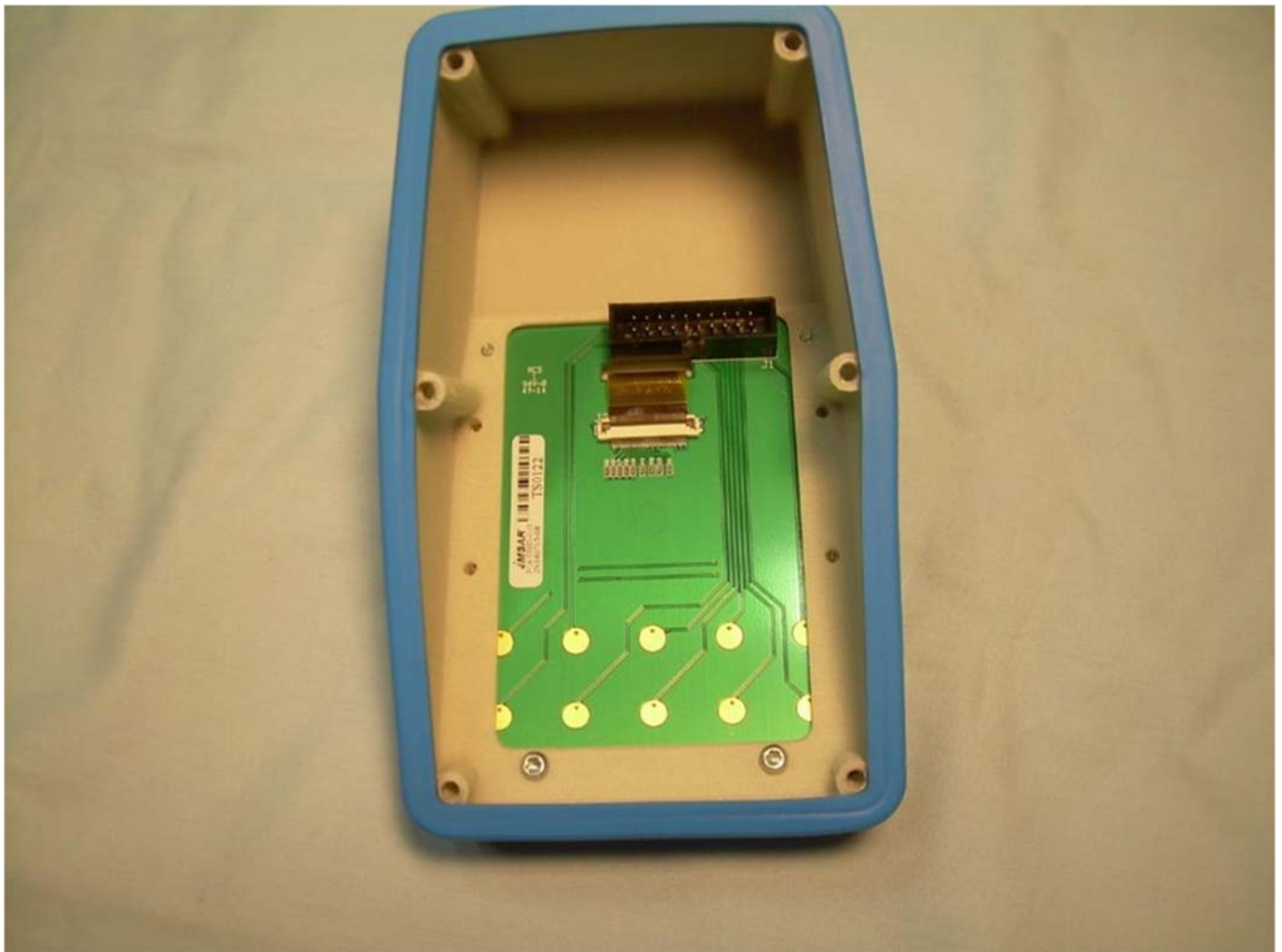
View of the Antennas



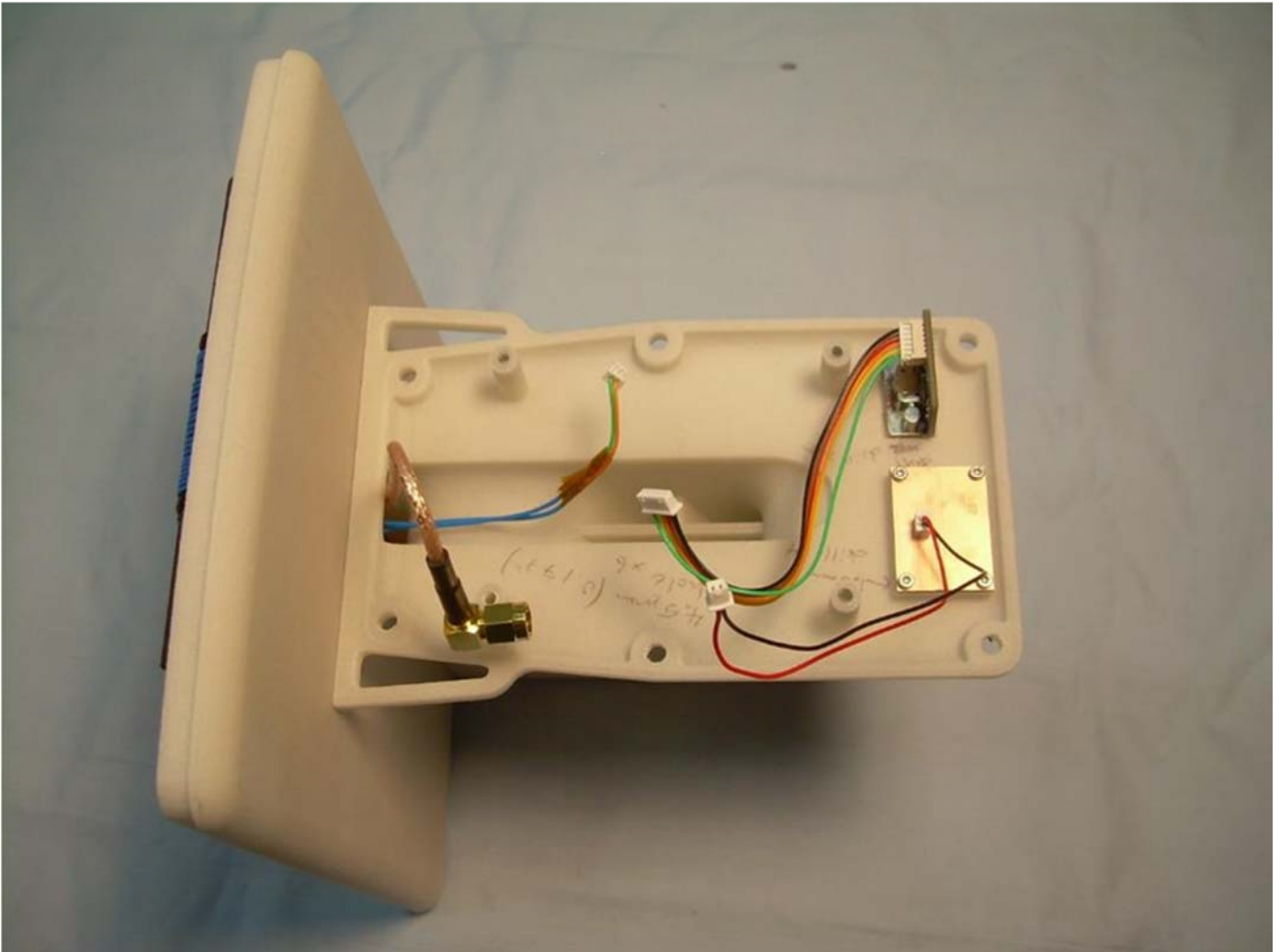
View with Top Cover Removed



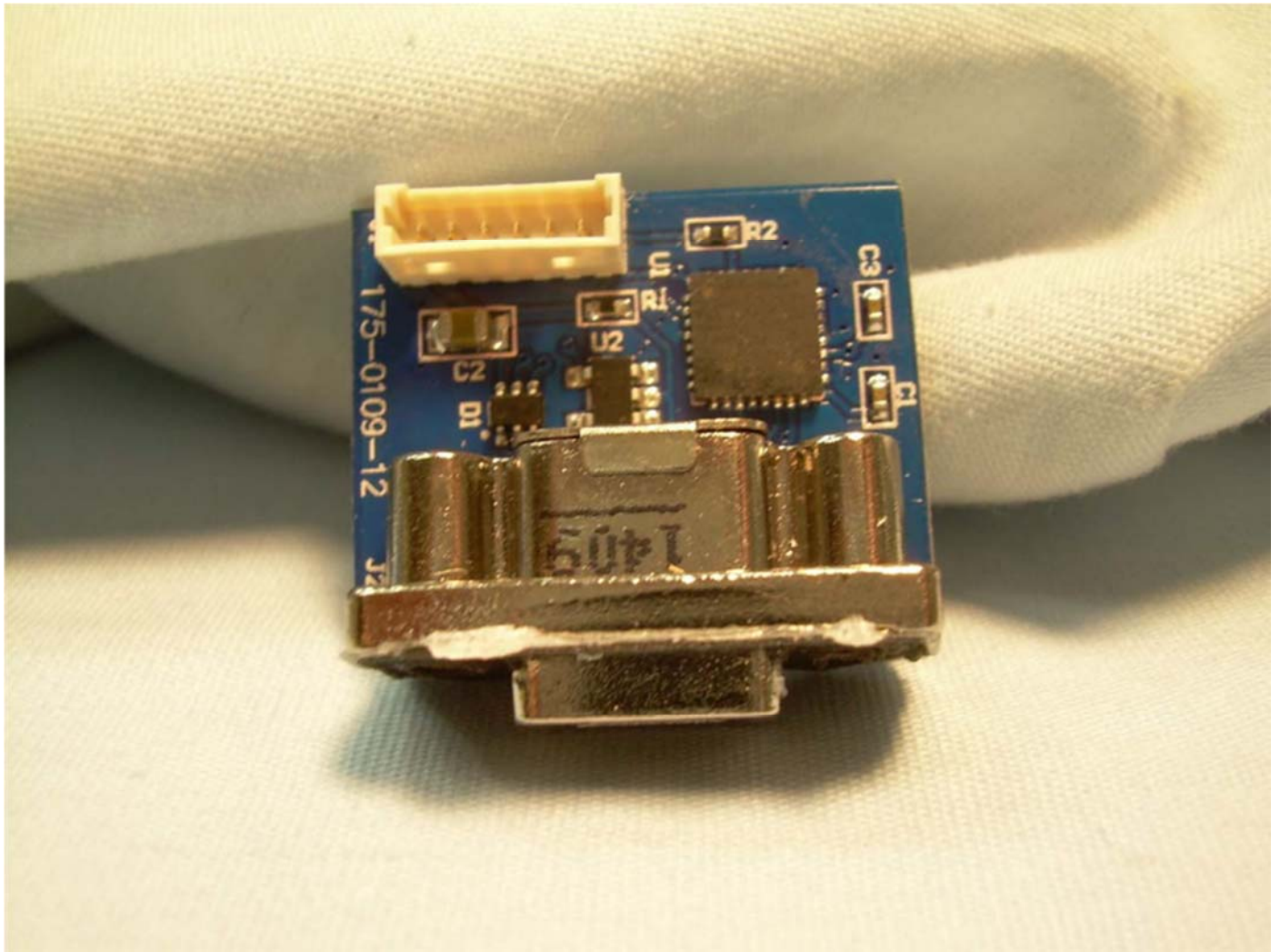
View of the Keypad PCB



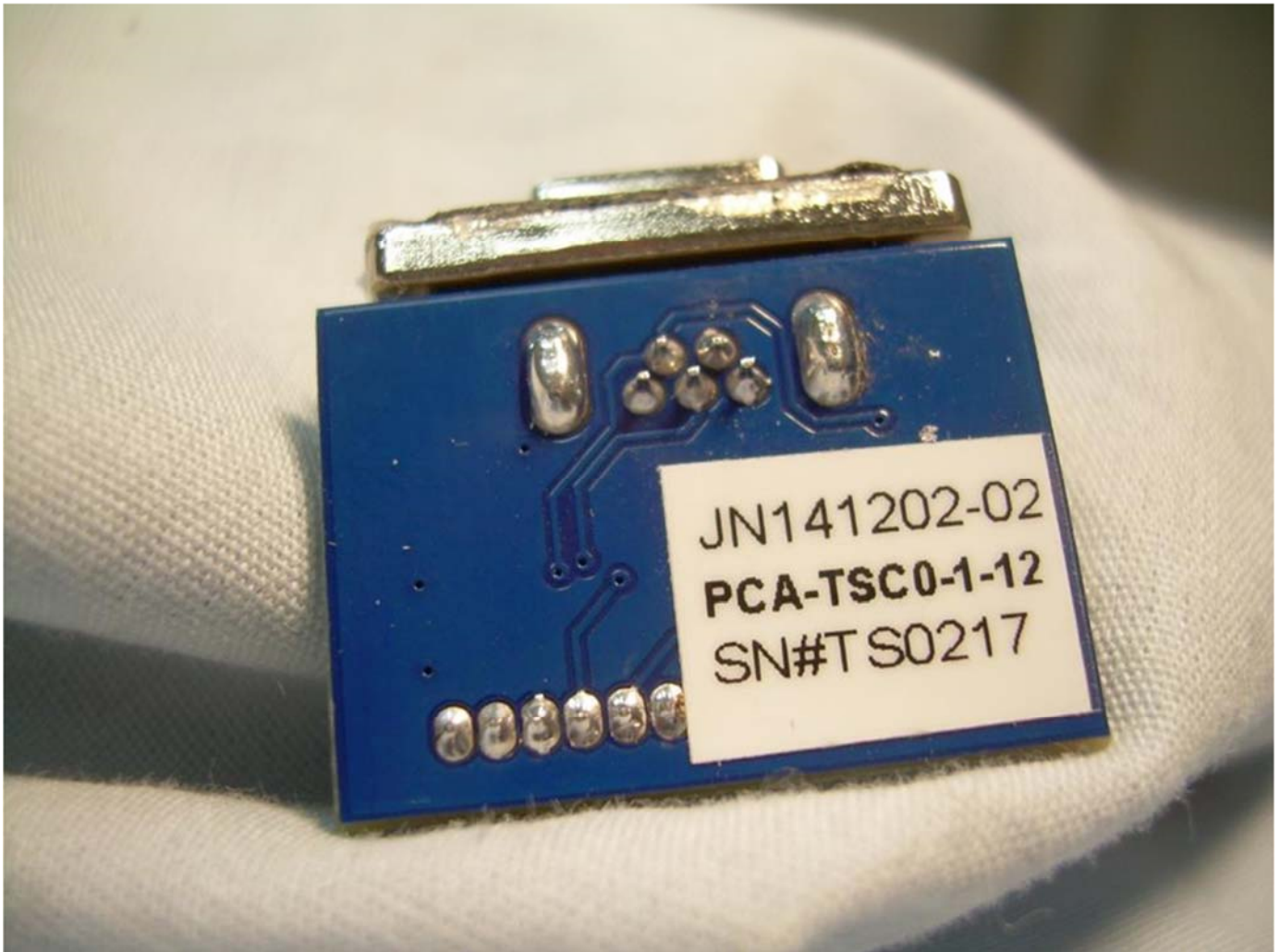
View with the Main PCB Removed



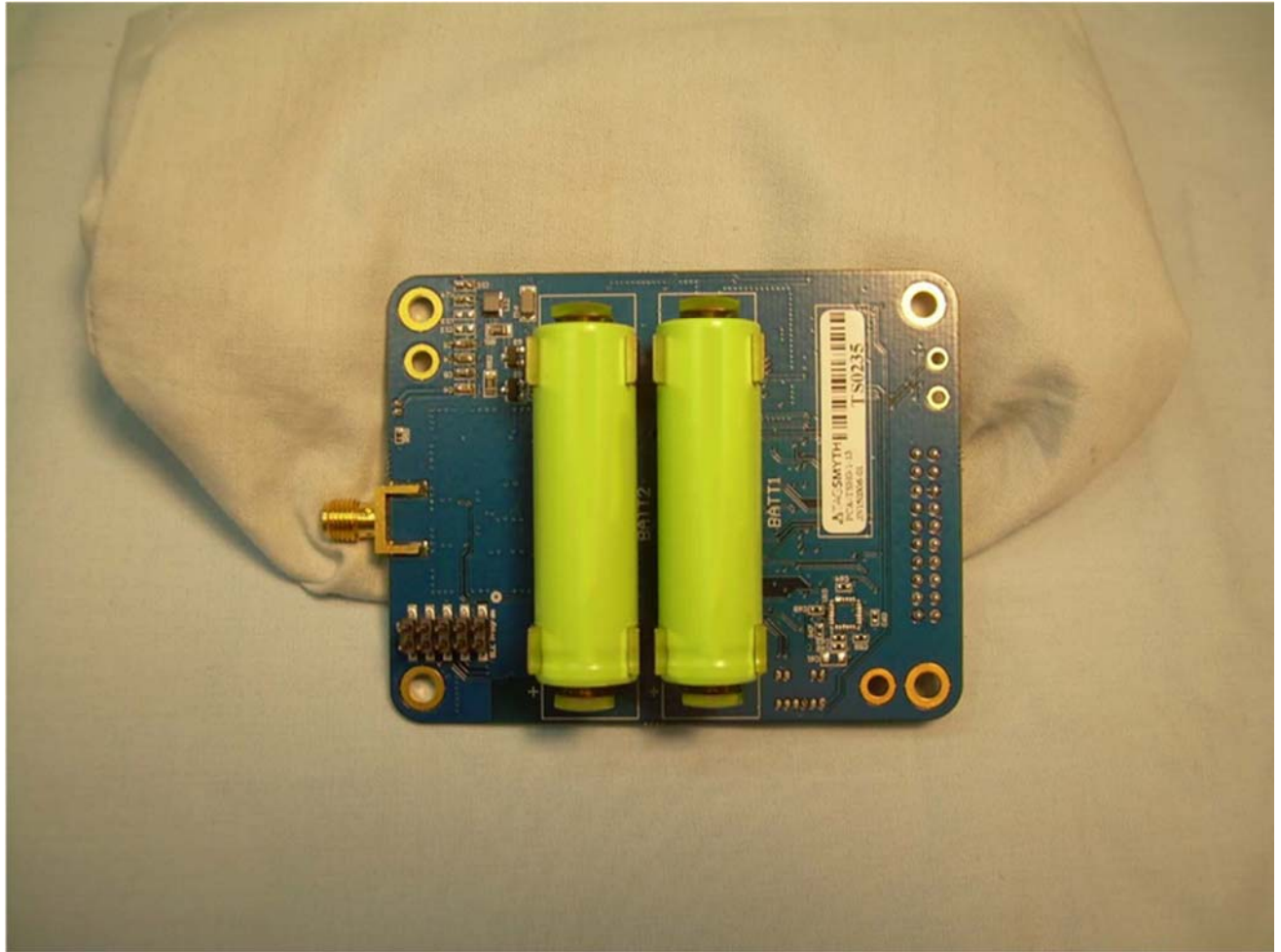
View of the Component Side of the USB Interface PCB



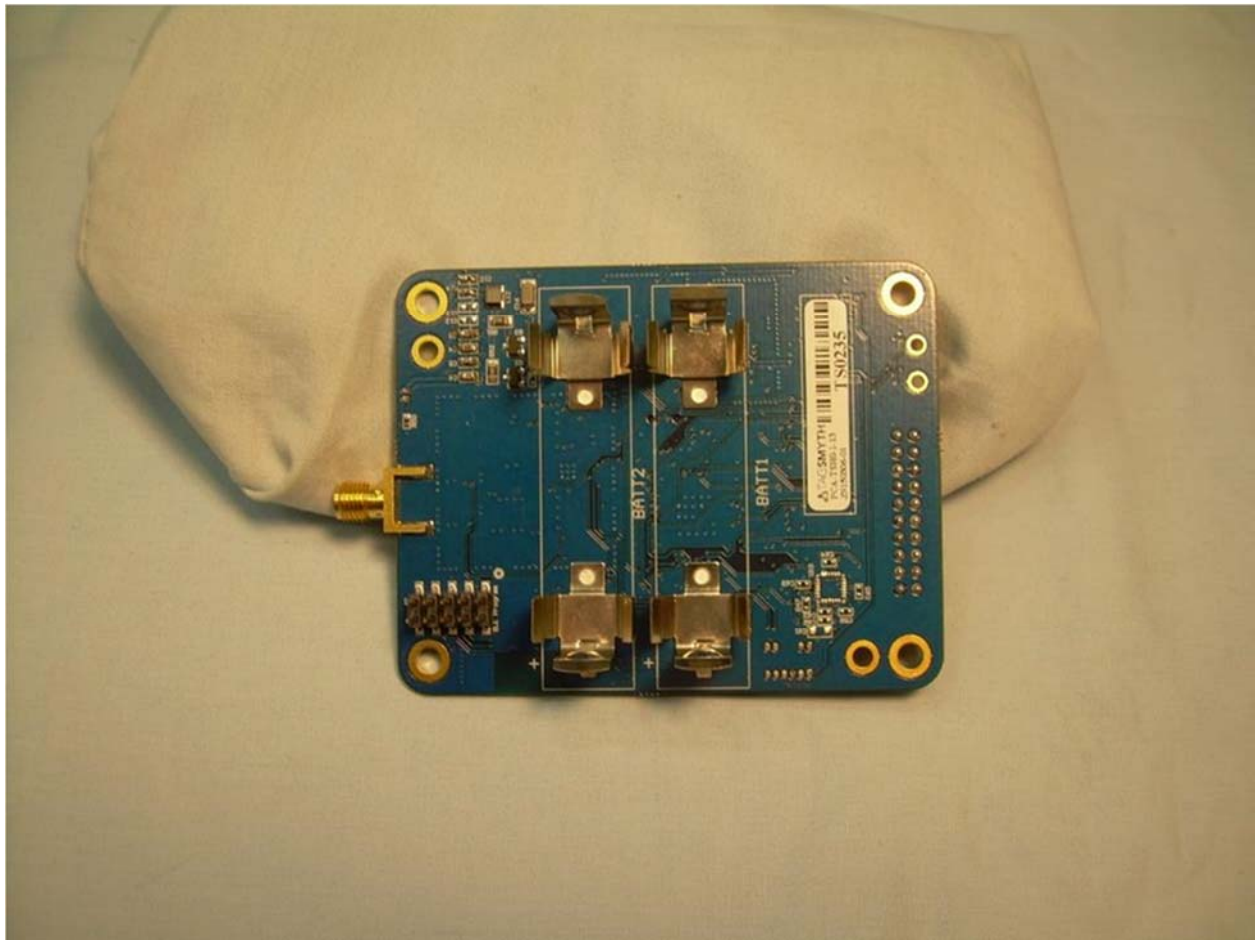
View of the Trace Side of the USB Interface PCB



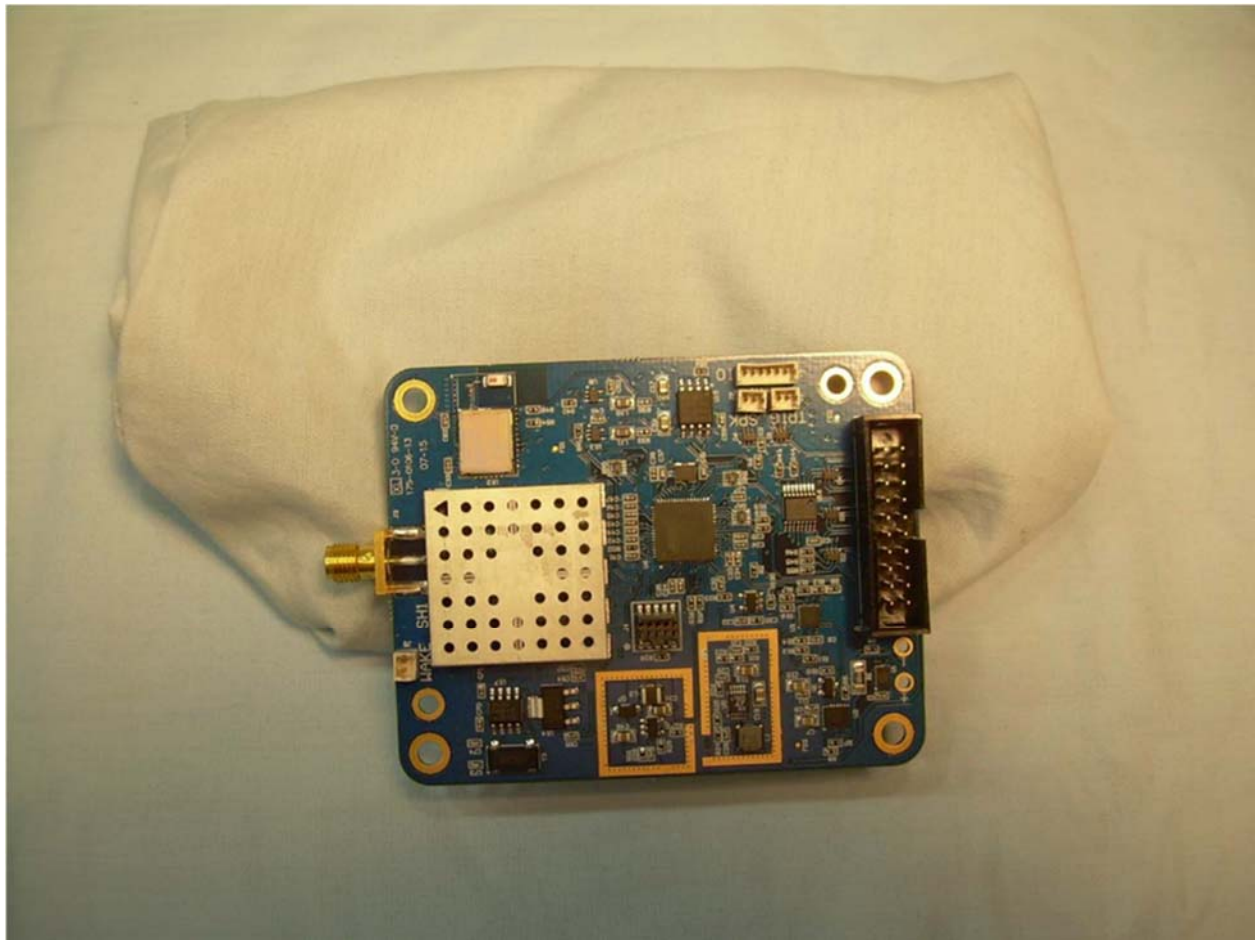
View of the Top Side of the Main PCB



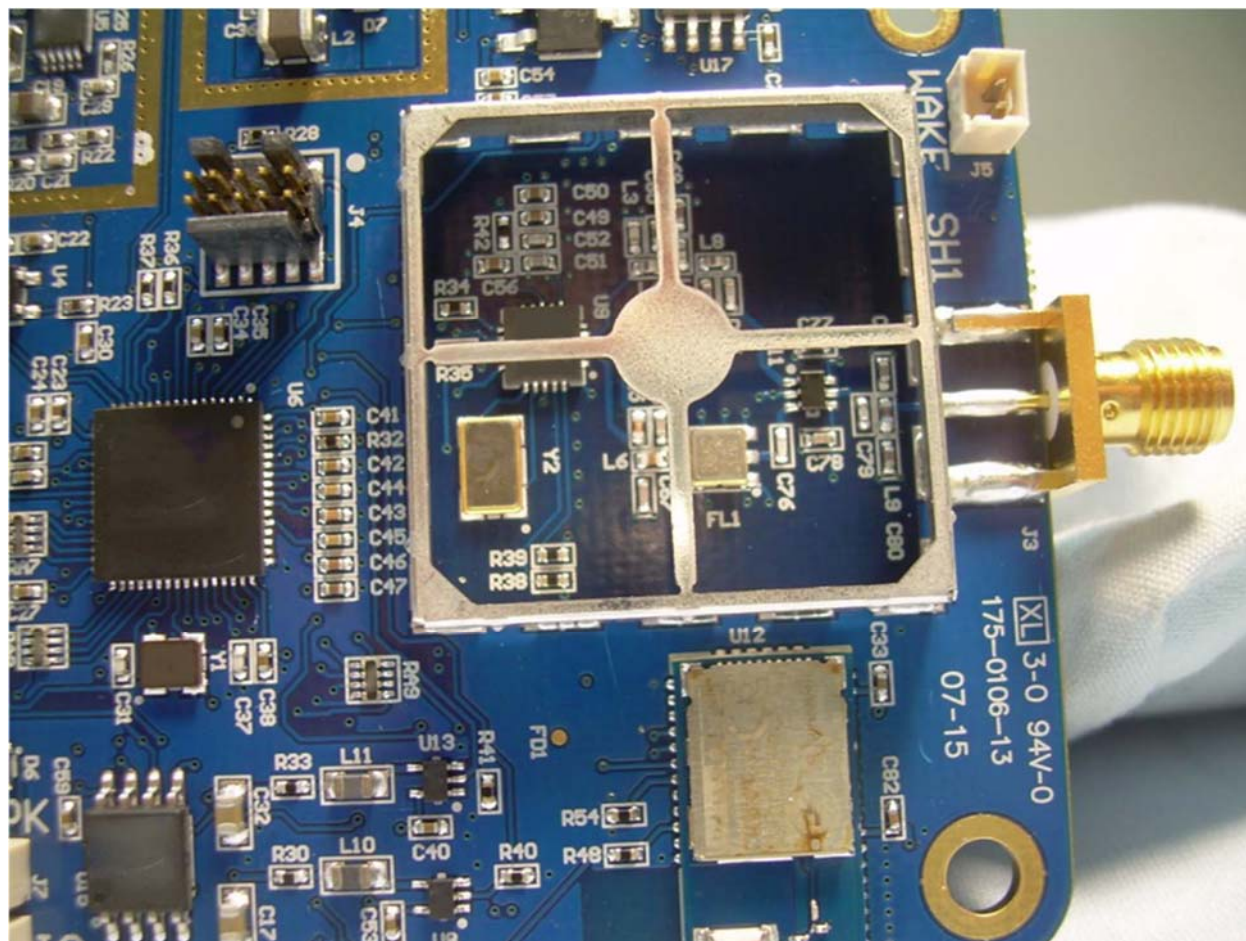
View of the Top Side of the Main PCB – Batteries Removed



View of the Bottom Side of the Main PCB



View of the RF Circuitry of the 902 – 928 MHz Transmitter and Receiver



View of the 150 kHz Transmitter Circuitry

