

# Tik Key

For iOS /Android/Harmony OS

## User's Guide

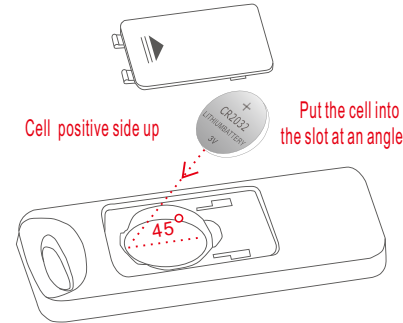
### Overview



### Installation Guide

1

### Step 1. Install CR2032 button battery



### Step 2. Pairing Tik Key with your device

#### a. Tap Settings



#### b. Enter "Bluetooth" options and turn on "Bluetooth"



#### c. Turn on the power SW and the LED will blink blue.

2

d. After finding "Tik Key", then you should tap "Tik Key", it will start connecting



### Introduction for some keys

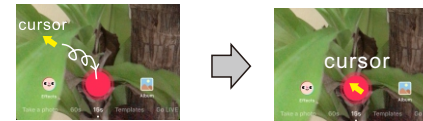
- **Like:** Double click for "like" (Click or hold for another surprise)
- **Volume+/Volume-:**
  - a. Shutter: In photo mode
  - b. Prev-Track/Next-Track: Press and hold for 3 seconds (music mode)
- **Universal key:** The cursor position is programmable
  - a. Photography: If the cursor is on the shutter
  - b. Video recording: If the cursor is on the record button
  - c. Giving gifts: If the cursor is on the gift icon etc...
- **Play/Pause:** Double click for "Home"
- **Power-SW:** If you forget to turn off the power, the remote may turn off the power by itself, and restart the power when you use it again.

### Universal key set up

Press **Universal key** and the **direction button** at the same time to change the cursor position

3

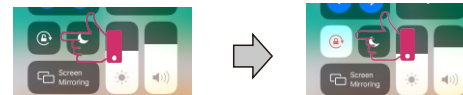
- Press **Universal key** + **Page left** to move the cursor to the left.
- Press **Universal key** + **Page right** to move the cursor to the right.
- Press **Universal key** + **Page up** to move the cursor to the up.
- Press **Universal key** + **Page down** to move the cursor to the down.



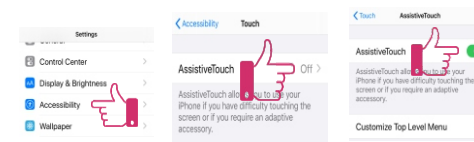
### !! Important Note:

If your device is **iOS** system, please operate two steps first.

#### 1. Lock screen setting



#### 2. Turn on assistive touch



4

### FCC Information to User

This equipment has been tested and found to comply with the limits for a Class B digital device, pursuant to Part 15 of the FCC Rules. These limits are designed to provide reasonable protection against harmful interference in a residential installation. This equipment generates, uses and can radiate radio frequency energy and, if not installed and used in accordance with the instructions, may cause harmful interference to radio communications. However, there is no guarantee that interference will not occur in a particular installation. If this equipment does cause harmful interference to radio or television reception, which can be determined by turning the equipment off and on, the user is encouraged to try to correct the interference by one of the following measures:

- Reorient or relocate the receiving antenna.
- Increase the separation between the equipment and receiver.
- Connect the equipment into an outlet on a circuit different from that to which the receiver is connected.
- Consult the dealer or an experienced radio/TV technician for help.

### Caution

Modifications not expressly approved by the party responsible for compliance could void the user's authority to operate the equipment.

FCC Compliance Information : This device complies with Part 15 of the FCC Rules. Operation is subject to the following two conditions: (1) This device may not cause harmful interference, and (2) this device must accept any interference received, including interference that may cause undesired operation.

### IMPORTANT NOTE:

#### FCC RF Radiation Exposure Statement:

This equipment complies with FCC RF radiation exposure limits set forth for an uncontrolled environment.