



Warranty Card

Warranty terms for overseas markets (out of China)

- We offer you 12 months limited warranty for the PCBA main board/work of the product under normal usage excluding deliberate damage or misuse on the product.
- You have 7 working days to contact us after you decided to apply for a return of the product. You are not allowed to ship it back to any address until we confirmed you by email with details.
- All returned product MUST BE in the original packaging and MUST PROVIDE as the shipping tracking No. specification reason for the return, and you order ID on Aliexpress or other websites.
- All shipping cost for the return of the product shall be born by the buyer, and the seller will confirm the refund of the payment in 3 working days after he received the return from the buyer.

RMA Record

Customer Information (for Buyer)

Customer Name: _____
 Telephone/Mobile: _____
 Customer Address: _____
 Post Code: _____
 Product Model Name: _____
 Serial No.: _____ S/N _____
 Origin of Product: _____
 Purchase from (Website/Shop name): _____
 Purchase Date: _____
 Purchase Order ID: _____

Repare/Replace Record

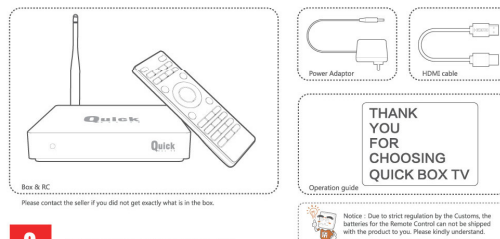
Seller Name: _____
 Issue Description: _____
 Reasons of Issue: _____
 Repair/Replace Result: _____
 New Serial No.: _____
 New Seller Name: _____
 Issue Description: _____
 Reasons of Issue: _____
 Repair/Replace Result: _____
 New Serial No.: _____

All rights of explaining the contents of the warranty terms is reserved to M&L.

Thank you for choosing QUICK BOX TV

Accessory

1

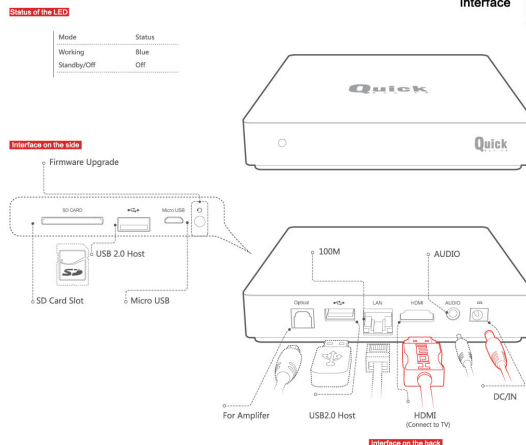


2 Best environment to enjoy M8



Interface

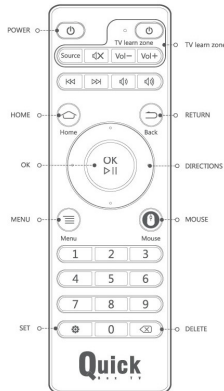
3



4 Remote Control

Remote Control

4



Definitions

- | Functions | Operations |
|---------------------|----------------------|
| On / Standby | Short press on POWER |
| Long press on POWER | Long press on POWER |
| Move cursor | Press DIRECTIONS |
| Confirm operations | Press OK |
| Control sound | Press Volume +/- |
| Cancel operations | Press RETURN |
| Back to home | Press HOME |
| Get more info | Press MENU |
| On/Off mouse mode | Press MOUSE |

Learning Function tips

- press red power key for Sureless after light on, it enters learn mode.
- press TV remote straight head to the remote, 3 to 5cm away.
- press power key on learn zone, light blinks, then press power key on TV remote for 2s, light blinks fast for 3 times and light keeping on, it means learning is completed.
- If need to learn more keys, repeat steps. After completed, press red power key to exit the mode.

5 Set up your router

99.9% Most of the time, if you set up the router correctly, there will have no issue to access internet. We suggest you setting up the router according to parameters below when you use M8.

Recommended parameters for your router

- SSID: Name your router (Better to be English letters or Arabic numerals)
 Open SSID: Broadcasting
 Open DHCP: For router to dispatch IP dynamically

Access to your router on website

- Firstly, find the IP, Account, Password of your router as picture showed on the right.
- | Router | Default IP | Account | Password |
|----------------|--------------------|---------|----------|
| Netgear Router | http://192.168.1.1 | admin | admin |
| Netgear Router | http://192.168.1.1 | admin | password |
| Netgear Router | http://192.168.1.1 | admin | password |

For example (Netgear Router): Connect your router with LAN cable and get the default IP type in "http://www.routerlogin.net". In the web browser (IE, Chrome or others) on your PC/Notebook, Type in account and password in the pop-up menu to open the setting menu of your router. As pictures showed below:

Change security mode and password for your route

- In the setting menu of your router, click Wireless Settings>Wireless Security Settings> to choose WPA-PSK/WPA2-PSK. Let's a password with 8 Arabic numerals or English letters, and click Save. As picture showed below.

Notice: We strongly recommend you to choose Security mode of WPA-PSK/WPA2-PSK.

General Setup

7

1) Connect to your TV

- HDMI**
 In order to have the best display resolution on the TV screen, we suggest you to connect the product by HDMI cable.

- AV**
 If your TV does not have HDMI interface, you can also connect the product by AV cable.

- TV signal adjustment**
 Please find the TV or TV remote control "source" button, press the use after adjusting up and down to the right source. Use HDMI connection, signal source for HDMI, use AV Line connection, signal source for AV or video.

- Connecting to Internet**
 If you use LAN, please connect the product with LAN cable. If you use WiFi, please make sure your router is working.

- Connecting to Power**
 Please use the original power adapter provided by M&L.

6 Power On

- Start it**
 After plug in power, the product will start up. Press power button on remote, the product will go to stand by mode.

- Display Size**
 Go to [System Setting]>[Display] menu.

- Applications Download**
 Go to My Apps [] in the home menu, find Google Play, add your account and start to download and install applications you like.

- Local file installation**
 Go to File Manager [] on the home menu, choose the APK you want and start installation by yourself.

The distance between user and products should be no less than 20cm
 WWW.QBOX.BZ
 INFO@QBOX.BZ

Advanced Setup

8

- APK Uninstall**
 Click [] in the home menu, find [] and choose the APK you want to remove. Click [] to uninstall.

- Move APK to SD card**
 Click [] in the home menu, find [] and choose the APK you want to move. Click [] to move.

- Refresh RAM**
 Click [] in the home menu, find [] and press [] to clear APK running.

- Firmware Upgrade**
 Click [] firmware upgrade in the home menu. There are two ways of upgrade: OTA and Local. Choose the way you like to start upgrade.

- Notice: For local upgrade, please make sure you get the "update.zip" file from our official website or forum and copy it to an empty USB key/flash.

- Notice: Do not cut off the power when the system is upgrading.

1. Warning: Changes or modifications not expressly approved by the party responsible for compliance could void your warranty to operate the equipment.

2. NOTE: This equipment has been tested and found to comply with the limits for a Class B digital device, pursuant to Part 15 of the FCC Rules. These limits are designed to provide reasonable protection against harmful interference in a residential installation. This equipment generates, uses and can radiate radio frequency energy and, if not installed and used in accordance with the instructions, may cause harmful interference to radio communications. However, there is no guarantee that interference will not occur in a particular installation. If this equipment does cause harmful interference to radio or television reception, which can be determined by turning the equipment off and on, the user is encouraged to try to correct the interference by one or more of the following measures: Reorient the equipment, increase the separation between the equipment and receiver, connect the equipment into a different outlet, have a qualified technician inspect the equipment.

3. Interfering cables may be used with this unit to ensure compliance with the Class B FCC limits.

4. The distance between user and products should be no less than 20cm

5. Contact Us

6. Manufacturer: Shenzhen M&L Digital Technology Ltd.