

Wireless Access Point

Quick Start Guide



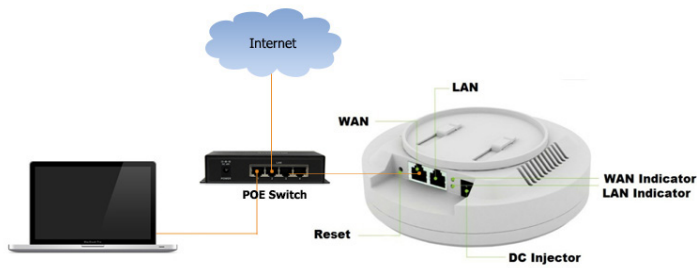
Step 1: Package Contents

Unbox and verify the following contents:

- Wireless Access Point
- Auxiliary tool for installation
- Wireless Access Point Quick Installation Guide
- 1 RJ45 Ethernet Cable

Step 2: Hardware Installation

- Power on your computer
- Connect one end of ethernet cable to POE switch port and the other end to Wireless Access Point's WAN port and power on the AP
- Ensure that the Power LED is on (LED will glow in Green)
- Ensure that the Wireless LED is on (LED will glow in Green)



Step 3: Access Point Configuration

- Connect one end of the RJ45 Ethernet cable to the POE switch and other end to the Ethernet port of the computer
- Ensure that the Network Connection is enabled on your computer
- Assign an IP address within the range (192.168.1.2-1.252) e.g. 192.168.1.10 to your computer
- Management IP for the AP is 192.168.1.253
- To configure the AP, open a web browser in your computer and type the following URL. **http://192.168.1.253**
- A login screen will appear. By default, the username of the AP is admin and password is pronto. You can set desired password after logging into the AP
- Configure the AP, as you desire
- By default the AP will broadcast unsecured ESSID as **Synectix**. The AP has provision to setup 4 ESSIDs and also to setup security for each one of them.
- Connect Internet back-haul to POE switch
- Connect your computer to default **Synectix** ESSID and access Internet
- Congratulations !! Your AP is configured successfully... Enjoy surfing Internet on Wi-Fi

I . This device complies with Part 15 of the FCC Rules. Operation is subject to the following two conditions: (1) This device may not cause harmful interference, and (2) This device must accept any interference received, including interference that may cause undesired operation.

Changes or modifications not expressly approved by the party responsible for compliance could void the user's authority to operate the equipment.