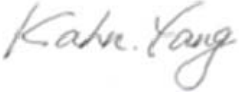




# EMC TEST REPORT



Report No.: 15070121-FCC-E1 Rev2

Supersede Report No.: 15070121-FCC-E1 Rev1

Applicant	Worldlinks Communications, L.L.C.	
Product Name	PHONE	
Model No.	R50S	
Serial No.	N/A	
Test Standard	FCC Part 15 Subpart B Class B:2014, ANSI C63.4: 2009	
Test Date	March 03, 2015	
Issue Date	March 21, 2015	
Test Result	<input checked="" type="checkbox"/> Pass <input type="checkbox"/> Fail	
Equipment complied with the specification	<input checked="" type="checkbox"/>	
Equipment did not comply with the specification	<input type="checkbox"/>	
		
Kahn Yang Test Engineer	Alex Liu Checked By	
<p>This test report may be reproduced in full only Test result presented in this test report is applicable to the tested sample only</p>		

Issued by:

**SIEMIC (SHENZHEN-CHINA) LABORATORIES**

Zone A, Floor 1, Building 2 Wan Ye Long Technology Park

South Side of Zhoushi Road, Bao' an District, Shenzhen, Guangdong China 518108

Phone: +86 0755 2601 4629801 Email: [China@siemic.com.cn](mailto:China@siemic.com.cn)

## Laboratories Introduction

SIEMIC, headquartered in the heart of Silicon Valley, with superior facilities in US and Asia, is one of the leading independent testing and certification facilities providing customers with one-stop shop services for Compliance Testing and Global Certifications.



In addition to testing and certification, SIEMIC provides initial design reviews and compliance management throughout a project. Our extensive experience with China, Asia Pacific, North America, European, and International compliance requirements, assures the fastest, most cost effective way to attain regulatory compliance for the global markets.

### Accreditations for Conformity Assessment

Country/Region	Scope
USA	EMC, RF/Wireless, SAR, Telecom
Canada	EMC, RF/Wireless, SAR, Telecom
Taiwan	EMC, RF, Telecom, SAR, Safety
Hong Kong	RF/Wireless, SAR, Telecom
Australia	EMC, RF, Telecom, SAR, Safety
Korea	EMI, EMS, RF, SAR, Telecom, Safety
Japan	EMI, RF/Wireless, SAR, Telecom
Singapore	EMC, RF, SAR, Telecom
Europe	EMC, RF, SAR, Telecom, Safety

Test Report	15070121-FCC-E1 Rev2
Page	3 of 27

This page has been left blank intentionally.

# CONTENTS

1. REPORT REVISION HISTORY .....	5
2. CUSTOMER INFORMATION .....	5
3. TEST SITE INFORMATION.....	5
4. EQUIPMENT UNDER TEST (EUT) INFORMATION.....	6
5. TEST SUMMARY .....	8
6. MEASUREMENTS, EXAMINATION AND DERIVED RESULTS .....	9
6.1 AC POWER LINE CONDUCTED EMISSIONS.....	9
6.2 RADIATED EMISSIONS.....	13
ANNEX A. TEST INSTRUMENT.....	16
ANNEX B. EUT AND TEST SETUP PHOTOGRAPHS.....	17
ANNEX C. TEST SETUP AND SUPPORTING EQUIPMENT.....	23
ANNEX D. USER MANUAL / BLOCK DIAGRAM / SCHEMATICS / PARTLIST .....	26
ANNEX E. DECLARATION OF SIMILARITY.....	27

## 1. Report Revision History

Report No.	Report Version	Description	Issue Date
15070121-FCC-E1	original	N/A	March 12, 2015
15070121-FCC-E1 Rev1	Version 1	Update Battery Information	March 17, 2015
15070121-FCC-E1 Rev2	Version 2	Added LTE Band 7 Information	March 21, 2015

## 2. Customer information

Applicant Name	Worldlinks Communications, L.L.C.
Applicant Add	270 Center Drive Suite 230, Vernon Hills, IL. 60061
Manufacturer	Shenzhen VSDREAM Technology Co., Ltd
Manufacturer Add	4F, Headquarters Building, zhonghaixin Science&Technology Park, Bulan Road, Buji Ave, Longgang Dist., Shenzhen, Guangdong, China

## 3. Test site information

Lab performing tests	SIEMIC (Shenzhen-China) LABORATORIES
Lab Address	Zone A, Floor 1, Building 2 Wan Ye Long Technology Park South Side of Zhoushi Road, Bao' an District, Shenzhen, Guangdong China 518108
FCC Test Site No.	718246
IC Test Site No.	4842E-1
Test Software	Radiated Emission Program-To Shenzhen v2.0

## 4. Equipment under Test (EUT) Information

Description of EUT: PHONE

Main Model: R50S

Serial Model: N/A

Date EUT received: February 12, 2015

Test Date(s): March 03, 2015

Equipment Category : JBP

Antenna Gain:

- GSM850: 0.13 dBi
- PCS1900: 0.77 dBi
- UMTS-FDD Band 5: 0.11 dBi
- UMTS-FDD Band 2: 0.73 dBi
- UMTS-FDD Band 4: 0.52 dBi
- LTE Band 2: 0.81 dBi
- LTE Band 4: 0.55 dBi
- LTE Band 5: 0.27 dBi
- LTE Band 7: 1.01 dBi
- LTE Band 17: -1.23 dBi
- Bluetooth/BLE/WIFI: 1.15 dBi

Type of Modulation:

- GSM / GPRS: GMSK
- EGPRS: GMSK
- UMTS-FDD: QPSK
- LTE Band: QPSK, 16QAM
- 802.11b/g/n: DSSS, OFDM
- Bluetooth: GFSK,  $\pi$  /4DQPSK, 8DPSK
- BLE: GFSK

RF Operating Frequency (ies):

- GSM850 TX: 824.2 ~ 848.8 MHz; RX: 869.2 ~ 893.8 MHz
- PCS1900 TX: 1850.2 ~ 1909.8 MHz; RX: 1930.2 ~ 1989.8 MHz
- UMTS-FDD Band 5 TX: 826.4 ~ 846.6 MHz; RX: 871.4 ~ 891.6 MHz
- UMTS-FDD Band 2 TX: 1852.4 ~ 1907.6 MHz;

Test Report	15070121-FCC-E1 Rev2
Page	7 of 27

RX: 1932.4 ~ 1987.6 MHz

UMTS-FDD Band 4 TX :1712.4 ~ 1752.6 MHz;

RX : 2112.4 ~ 2152.6 MHz

LTE Band 2 TX: 1852.5 ~ 1907.5 MHz; RX : 1932.5 ~ 1987.5 MHz

LTE Band 4 TX: 1712.5 ~ 1752.5 MHz; RX : 2112.5 ~ 2152.5 MHz

LTE Band 5 TX: 826.5 ~ 846.5 MHz; RX : 871.5 ~ 891.5 MHz

LTE Band 7 TX: 2502.5 ~ 2567.5 MHz; RX : 2622.5 ~ 2687.5 MHz

LTE Band 17 TX: 706.5 ~ 713.5 MHz; RX : 736.5 ~ 743.5 MHz

WiFi:802.11b/g/n(20M): 2412-2462 MHz

WiFi: 802.11n(40M): 2422-2452 MHz

Bluetooth& BLE: 2402-2480 MHz

Port: Power Port, Earphone Port, USB Port

Battery:

Model: 5MQ2

Spec: 3.7V 2000mAh

Limited charger voltage: 4.2V

Input Power:

Adapter:

Model: KA25-0501000US

Input: AC 100-240V; 50/60Hz 0.25A

Output: DC 5.0V; 1000mA

Trade Name : REDDOTMOBILE

GPRS/EGPRS Multi-slot class N/A

FCC ID: 2ADNIR50S

## 5. Test Summary

The product was tested in accordance with the following specifications.

All testing has been performed according to below product classification:

FCC Rules	Description of Test	Result
§15.107; ANSI C63.4: 2009	AC Power Line Conducted Emissions	Compliance
§15.109; ANSI C63.4: 2009	Radiated Emissions	Compliance

### Measurement Uncertainty

Emissions		
Test Item	Description	Uncertainty
Band Edge and Radiated Spurious Emissions	Confidence level of approximately 95% (in the case where distributions are normal), with a coverage factor of 2 (for EUTs < 0.5m X 0.5m X 0.5m)	+5.6dB/-4.5dB
-	-	-



## 6. Measurements, Examination And Derived Results

### 6.1 AC Power Line Conducted Emissions

Temperature:	24°C
Relative Humidity:	66%
Atmospheric Pressure:	1007mbar
Test date:	March 03, 2015
Tested By:	Kahn Yang

#### Requirement(s):

Spec	Item	Requirement	Applicable														
47CFR§15.107	a)	<p>For Low-power radio-frequency devices that is designed to be connected to the public utility (AC) power line, the radio frequency voltage that is conducted back onto the AC power line on any frequency or frequencies, within the band 150 kHz to 30 MHz, shall not exceed the limits in the following table, as measured using a 50 [μ] H/50 ohms line impedance stabilization network (LISN). The lower limit applies at the boundary between the frequencies ranges.</p> <table border="1"> <thead> <tr> <th rowspan="2">Frequency ranges (MHz)</th> <th colspan="2">Limit (dBμV)</th> </tr> <tr> <th>QP</th> <th>Average</th> </tr> </thead> <tbody> <tr> <td>0.15 ~ 0.5</td> <td>66 – 56</td> <td>56 – 46</td> </tr> <tr> <td>0.5 ~ 5</td> <td>56</td> <td>46</td> </tr> <tr> <td>5 ~ 30</td> <td>60</td> <td>50</td> </tr> </tbody> </table>	Frequency ranges (MHz)	Limit (dBμV)		QP	Average	0.15 ~ 0.5	66 – 56	56 – 46	0.5 ~ 5	56	46	5 ~ 30	60	50	<input checked="" type="checkbox"/>
Frequency ranges (MHz)	Limit (dBμV)																
	QP	Average															
0.15 ~ 0.5	66 – 56	56 – 46															
0.5 ~ 5	56	46															
5 ~ 30	60	50															

Test Setup	<p style="text-align: center;"> <b>Note: 1. Support units were connected to second LISN. 2. Both of LISNs (AMN) are 80cm from EUT and at least 80cm from other units and other metal planes support units.</b> </p>
------------	---

Procedure	<ol style="list-style-type: none"> <li>The EUT and supporting equipment were set up in accordance with the requirements of the standard on top of a 1.5m x 1m x 0.8m high, non-metallic table.</li> <li>The power supply for the EUT was fed through a 50W/50mH EUT LISN, connected to filtered mains.</li> </ol>
-----------	---



Test Report	15070121-FCC-E1 Rev2
Page	10 of 27

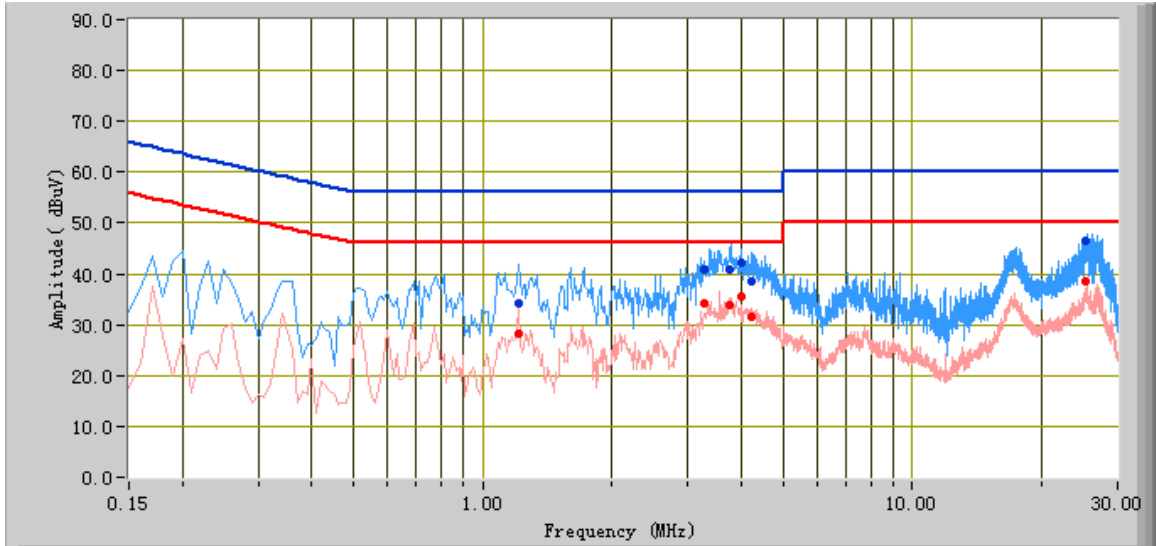
	<ol style="list-style-type: none"> <li>3. The RF OUT of the EUT LISN was connected to the EMI test receiver via a low-loss coaxial cable.</li> <li>4. All other supporting equipment were powered separately from another main supply.</li> <li>5. The EUT was switched on and allowed to warm up to its normal operating condition.</li> <li>6. A scan was made on the NEUTRAL line (for AC mains) or Earth line (for DC power) over the required frequency range using an EMI test receiver.</li> <li>7. High peaks, relative to the limit line, The EMI test receiver was then tuned to the selected frequencies and the necessary measurements made with a receiver bandwidth setting of 10 kHz.</li> <li>8. Step 7 was then repeated for the LIVE line (for AC mains) or DC line (for DC power).</li> </ol>
Remark	
Result	<input checked="" type="checkbox"/> Pass <input type="checkbox"/> Fail

Test Data     Yes                       N/A

Test Plot     Yes (See below)             N/A

**Test Mode: Transmitting Mode**

**Peak Detector**     **Quasi Peak Limit**      
**Average Detector**     **Average Limit**    



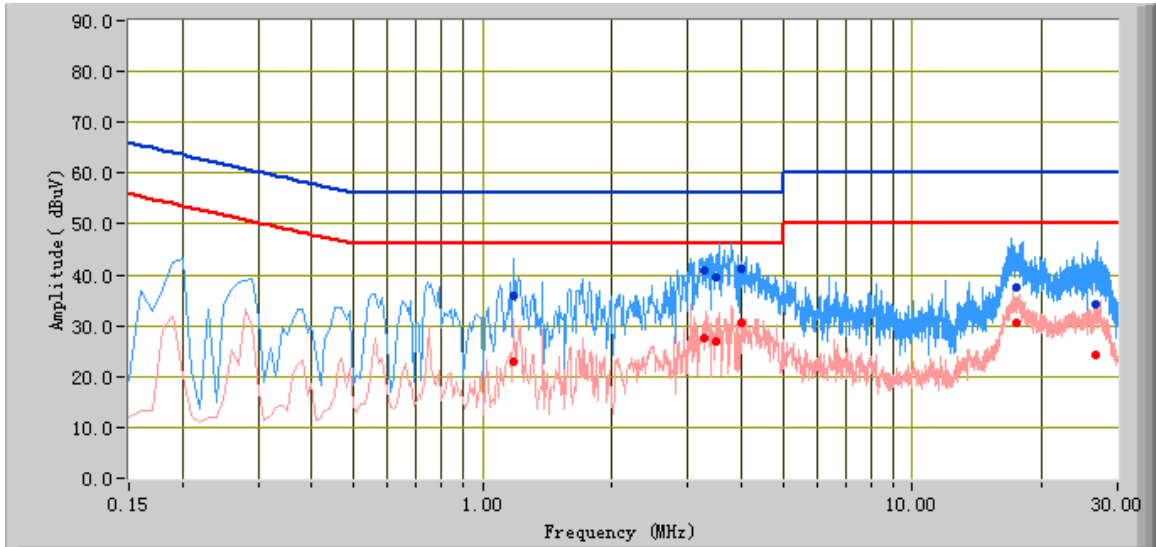
**Test Data**

**Phase Line Plot at 120Vac, 60Hz**

Frequency (MHz)	Quasi Peak (dBµV)	Limit (dBµV)	Margin (dB)	Average (dBµV)	Limit (dBµV)	Margin (dB)	Factors (dB)
3.98	42.02	56.00	-13.98	35.49	46.00	-10.51	10.81
3.74	40.89	56.00	-15.11	33.86	46.00	-12.14	10.76
4.22	38.62	56.00	-17.38	31.61	46.00	-14.39	10.85
1.21	34.19	56.00	-21.81	28.19	46.00	-17.81	10.30
3.26	40.98	56.00	-15.02	34.36	46.00	-11.64	10.67
25.34	46.35	60.00	-13.65	38.51	50.00	-11.49	15.68

**Test Mode: Transmitting Mode**

Peak Detector ▲ Quasi Peak Limit ▲  
 Average Detector ▲ Average Limit ▲



**Test Data**

**Phase Neutral Plot at 120Vac, 60Hz**

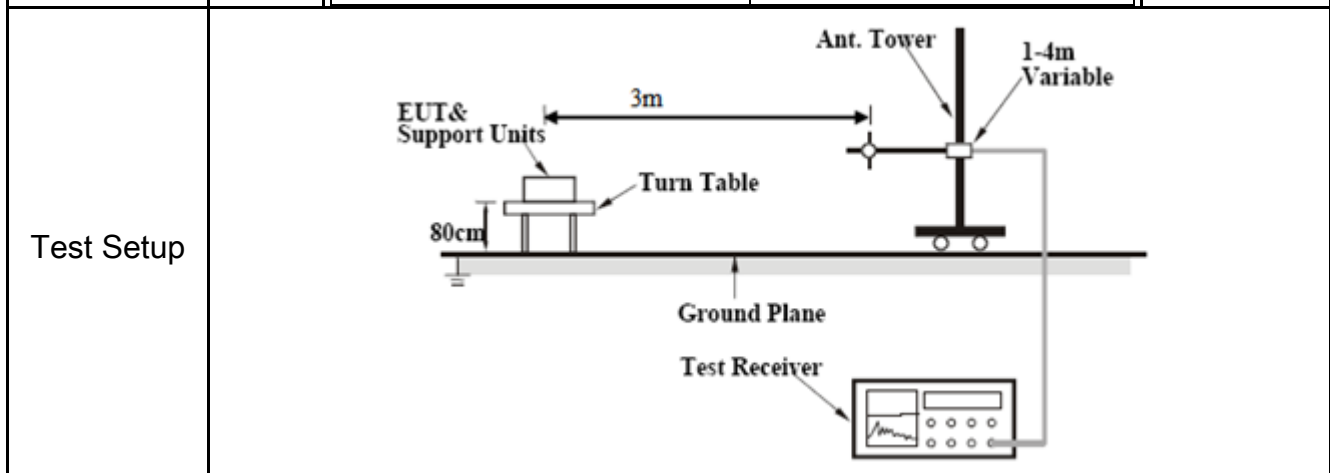
Frequency (MHz)	Quasi Peak (dBµV)	Limit (dBµV)	Margin (dB)	Average (dBµV)	Limit (dBµV)	Margin (dB)	Factors (dB)
3.50	39.50	56.00	-16.50	26.98	46.00	-19.02	10.71
1.18	35.78	56.00	-20.22	23.05	46.00	-22.95	10.29
3.26	40.83	56.00	-15.17	27.61	46.00	-18.39	10.67
3.98	41.22	56.00	-14.78	30.55	46.00	-15.45	10.81
26.78	34.08	60.00	-25.92	24.38	50.00	-25.62	15.86
17.42	37.63	60.00	-22.37	30.50	50.00	-19.50	14.10

## 6.2 Radiated Emissions

Temperature	24°C
Relative Humidity	66%
Atmospheric Pressure	1007mbar
Test date :	March 03, 2015
Tested By :	Kahn Yang

### Requirement(s):

Spec	Item	Requirement	Applicable										
47CFR§15.107(d)	a)	Except higher limit as specified elsewhere in other section, the emissions from the low-power radio-frequency devices shall not exceed the field strength levels specified in the following table and the level of any unwanted emissions shall not exceed the level of the fundamental emission. The tighter limit applies at the band edges	<input checked="" type="checkbox"/>										
		<table border="1"> <thead> <tr> <th>Frequency range (MHz)</th> <th>Field Strength (<math>\mu\text{V}/\text{m}</math>)</th> </tr> </thead> <tbody> <tr> <td style="text-align: center;">30 – 88</td> <td style="text-align: center;">100</td> </tr> <tr> <td style="text-align: center;">88 – 216</td> <td style="text-align: center;">150</td> </tr> <tr> <td style="text-align: center;">216 960</td> <td style="text-align: center;">200</td> </tr> <tr> <td style="text-align: center;">Above 960</td> <td style="text-align: center;">500</td> </tr> </tbody> </table>		Frequency range (MHz)	Field Strength ( $\mu\text{V}/\text{m}$ )	30 – 88	100	88 – 216	150	216 960	200	Above 960	500
		Frequency range (MHz)		Field Strength ( $\mu\text{V}/\text{m}$ )									
		30 – 88		100									
		88 – 216		150									
216 960	200												
Above 960	500												



Procedure	<ol style="list-style-type: none"> <li>1. The EUT was switched on and allowed to warm up to its normal operating condition.</li> <li>2. The test was carried out at the selected frequency points obtained from the EUT characterization. Maximization of the emissions, was carried out by rotating the EUT, changing the antenna polarization, and adjusting the antenna height in the following manner:             <ol style="list-style-type: none"> <li>a. Vertical or horizontal polarization (whichever gave the higher emission level</li> </ol> </li> </ol>
-----------	---



	<p>over a full rotation of the EUT) was chosen.</p> <p>b. The EUT was then rotated to the direction that gave the maximum emission.</p> <p>c. Finally, the antenna height was adjusted to the height that gave the maximum emission.</p> <p>3. The resolution bandwidth and video bandwidth of test receiver/spectrum analyzer is 120 kHz for Quasiy Peak detection at frequency below 1GHz.</p> <p>4. The resolution bandwidth of test receiver/spectrum analyzer is 1MHz and video bandwidth is 3MHz with Peak detection for Peak measurement at frequency above 1GHz.        The resolution bandwidth of test receiver/spectrum analyzer is 1MHz and the video bandwidth with Peak detection for Average Measurement as below at frequency above 1GHz.        ■ 1 kHz (Duty cycle &lt; 98%) □ 10 Hz (Duty cycle &gt; 98%)</p> <p>5. Steps 2 and 3 were repeated for the next frequency point, until all selected frequency points were measured.</p>
Remark	
Result	<input checked="" type="checkbox"/> Pass <input type="checkbox"/> Fail

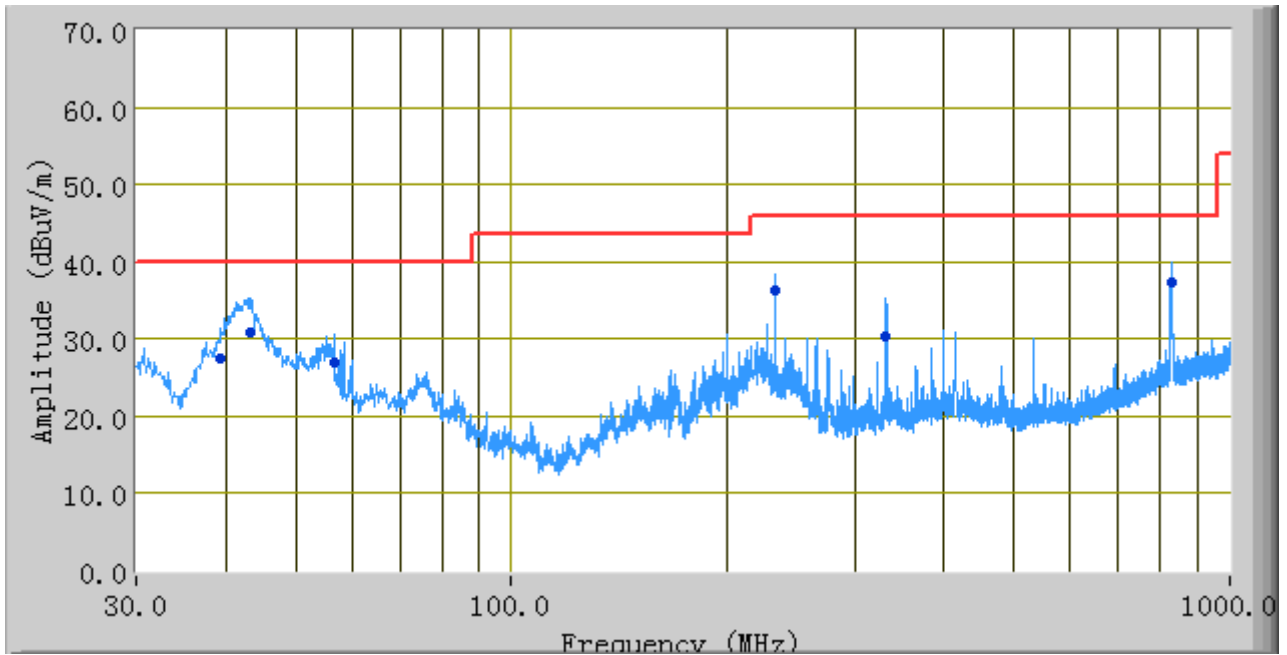
Test Data     Yes                       N/A

Test Plot     Yes (See below)             N/A

<b>Test Mode:</b>	<b>Transmitting Mode</b>
-------------------	--------------------------

(Below 1GHz)

Peak Detector   
Quasi Peak Limit 



**Test Data**

**Vertical & Horizontal Polarity Plot @3m**

Frequency (MHz)	Quasi Peak (dB $\mu$ V/m)	Azimuth	Polarity (H/V)	Height (cm)	Factors (dB)	Limit (dB $\mu$ V/m)	Margin (dB)
43.13	30.77	0.00	V	100.00	-10.08	40.00	-9.23
827.96	37.40	250.00	H	100.00	3.85	46.00	-8.60
233.14	36.39	98.00	H	107.00	-7.64	46.00	-9.61
39.31	27.50	252.00	V	100.00	-7.06	40.00	-12.50
56.50	26.87	58.00	V	104.00	-13.99	40.00	-13.13
331.98	30.27	240.00	H	106.00	-5.50	46.00	-15.73

Note: The above 1GHz frequency was pre-scanned and the result which was 20dB lower than the limit line per 15.109 was not recorded.

## Annex A. TEST INSTRUMENT

Instrument	Model	Serial #	Cal Date	Cal Due	In use
<b>AC Line Conducted Emissions</b>					
EMI test receiver	ESCS30	8471241027	09/18/2014	09/17/2015	<input checked="" type="checkbox"/>
Line Impedance Stabilization Network	LI-125A	191106	09/26/2014	09/25/2015	<input checked="" type="checkbox"/>
Line Impedance Stabilization Network	LI-125A	191107	09/26/2014	09/25/2015	<input checked="" type="checkbox"/>
LISN	ISN T800	34373	09/26/2014	09/25/2015	<input checked="" type="checkbox"/>
Transient Limiter	LIT-153	531118	09/02/2014	09/01/2015	<input checked="" type="checkbox"/>
<b>Radiated Emissions</b>					
EMI test receiver	ESL6	100262	09/18/2014	09/17/2015	<input checked="" type="checkbox"/>
OPT 010 AMPLIFIER (0.1-1300MHz)	8447E	2727A02430	09/02/2014	09/01/2015	<input checked="" type="checkbox"/>
Microwave Preamplifier (0.5 ~ 18GHz)	PAM-118	443008	09/02/2014	09/01/2015	<input checked="" type="checkbox"/>
Bilog Antenna (30MHz~6GHz)	JB6	A110712	09/22/2014	09/21/2015	<input checked="" type="checkbox"/>
Double Ridge Horn Antenna	AH-118	71259	09/25/2014	09/24/2015	<input checked="" type="checkbox"/>



## Annex B. EUT And Test Setup Photographs

### Annex B.i. Photograph: EUT External Photo



Whole Package - Top View



Adapter - Front View



EUT - Front View



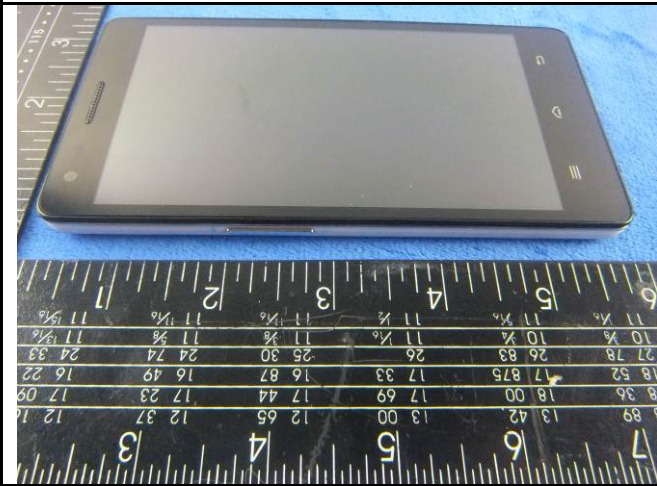
EUT - Rear View



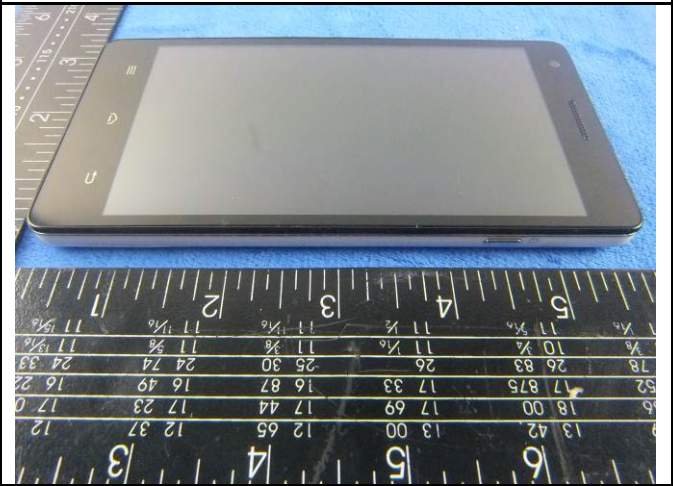
EUT - Top View



EUT - Bottom View



EUT - Left View



EUT - Right View



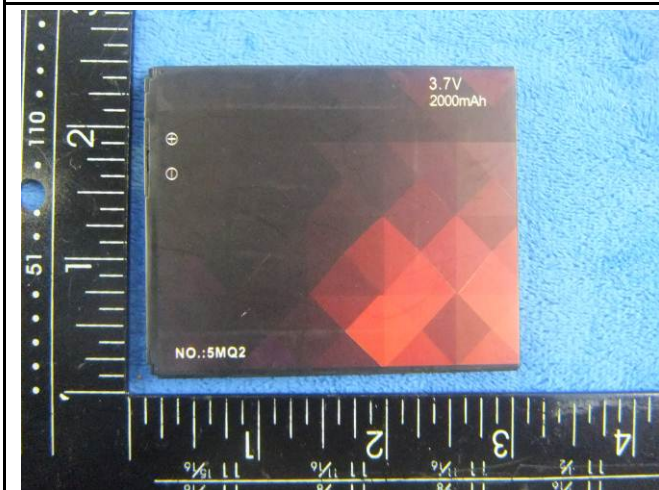
**Annex B.ii. Photograph: EUT Internal Photo**



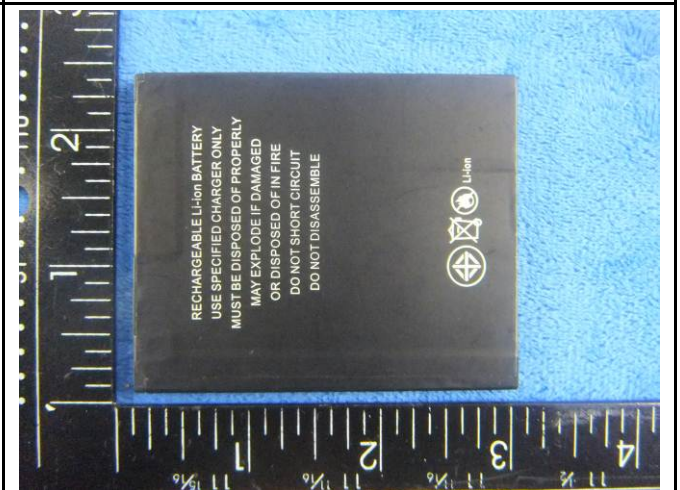
Cover Off - Top View 1



Cover Off - Top View 2



Battery - Top View



Battery - Bottom View

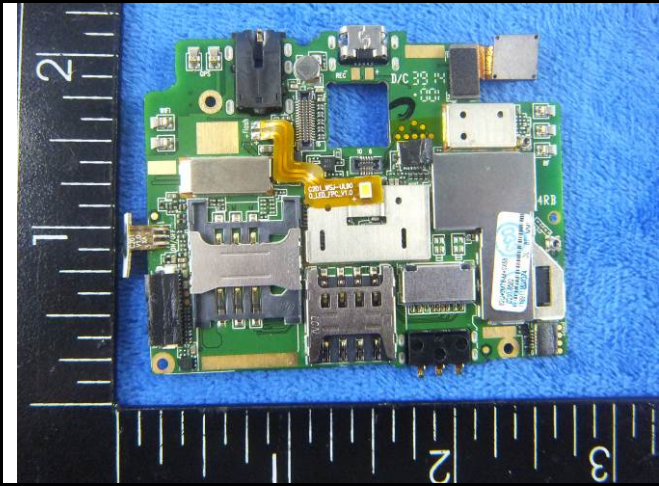


LCD - Front View

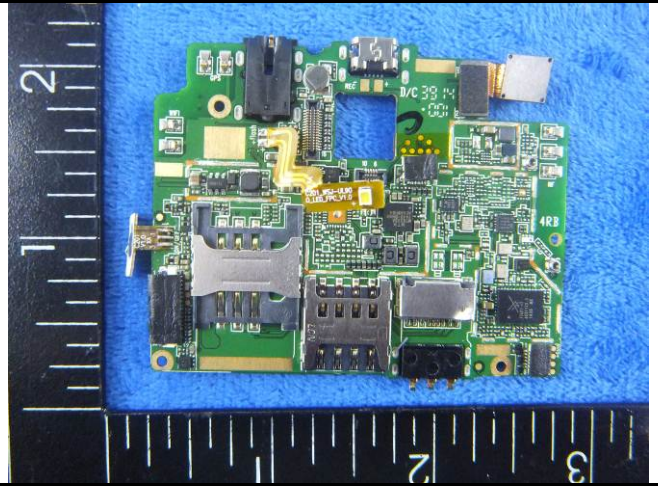


LCD - Rear View

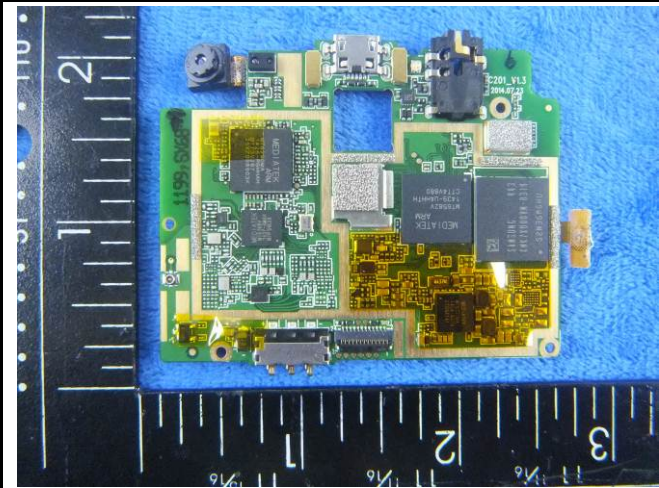




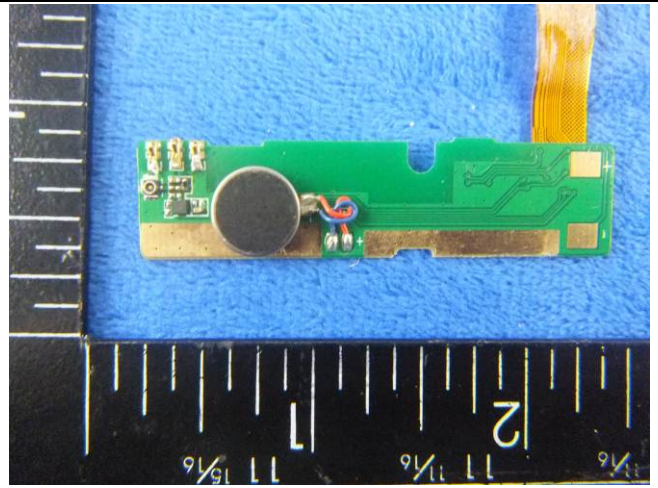
Mainboard With Shielding - Front View



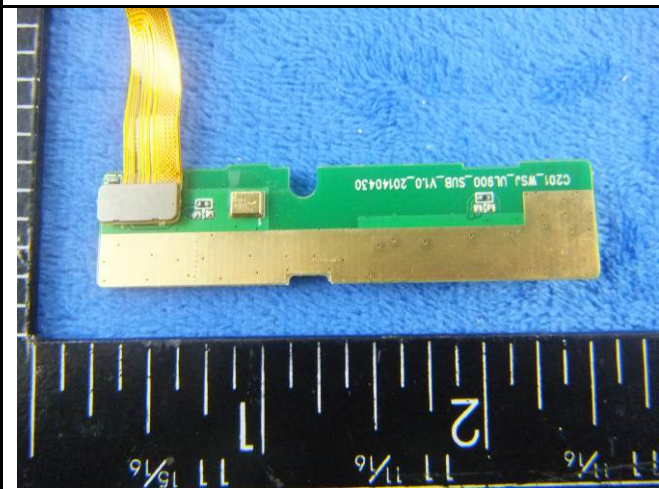
Mainboard Without Shielding - Front View



Mainboard - Rear View



Connect board - Front View



Connect board - Rear View



GSM/PCS/UMTS-FDD/LTE Antenna View



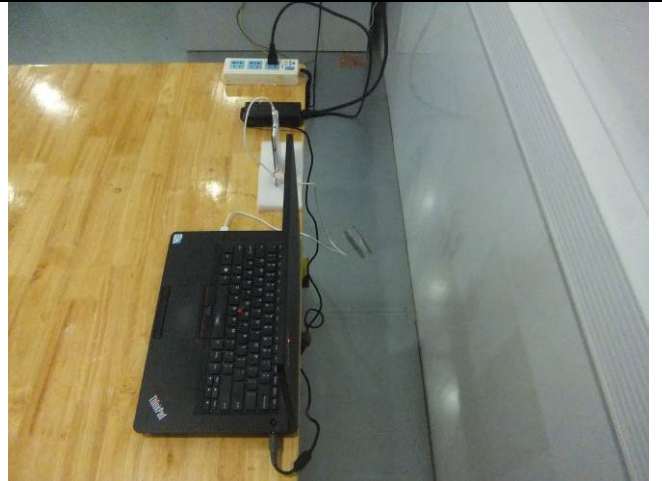
BT/BLE/WIFI Antenna View



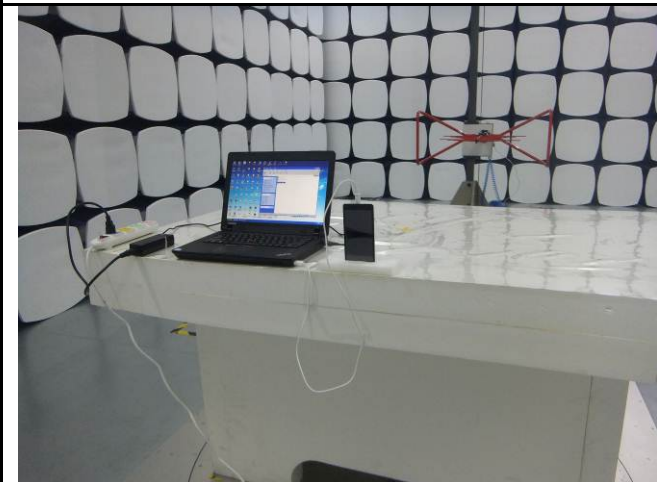
**Annex B.iii. Photograph: Test Setup Photo**



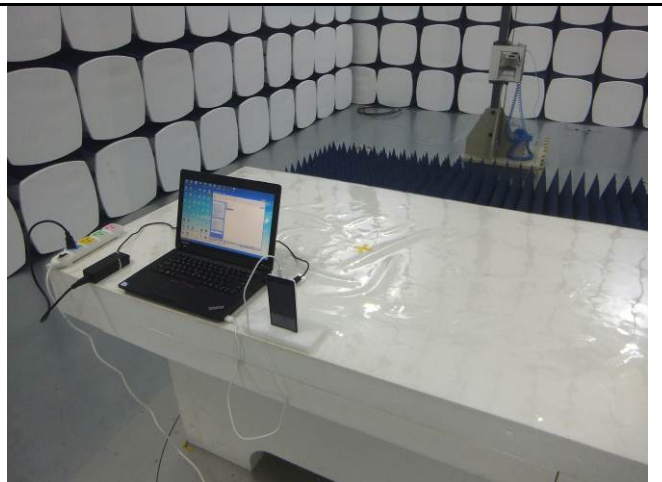
Conducted Emissions Test Setup Front View



Conducted Emissions Test Setup Side View



Radiated Spurious Emissions Test Setup Below 1GHz

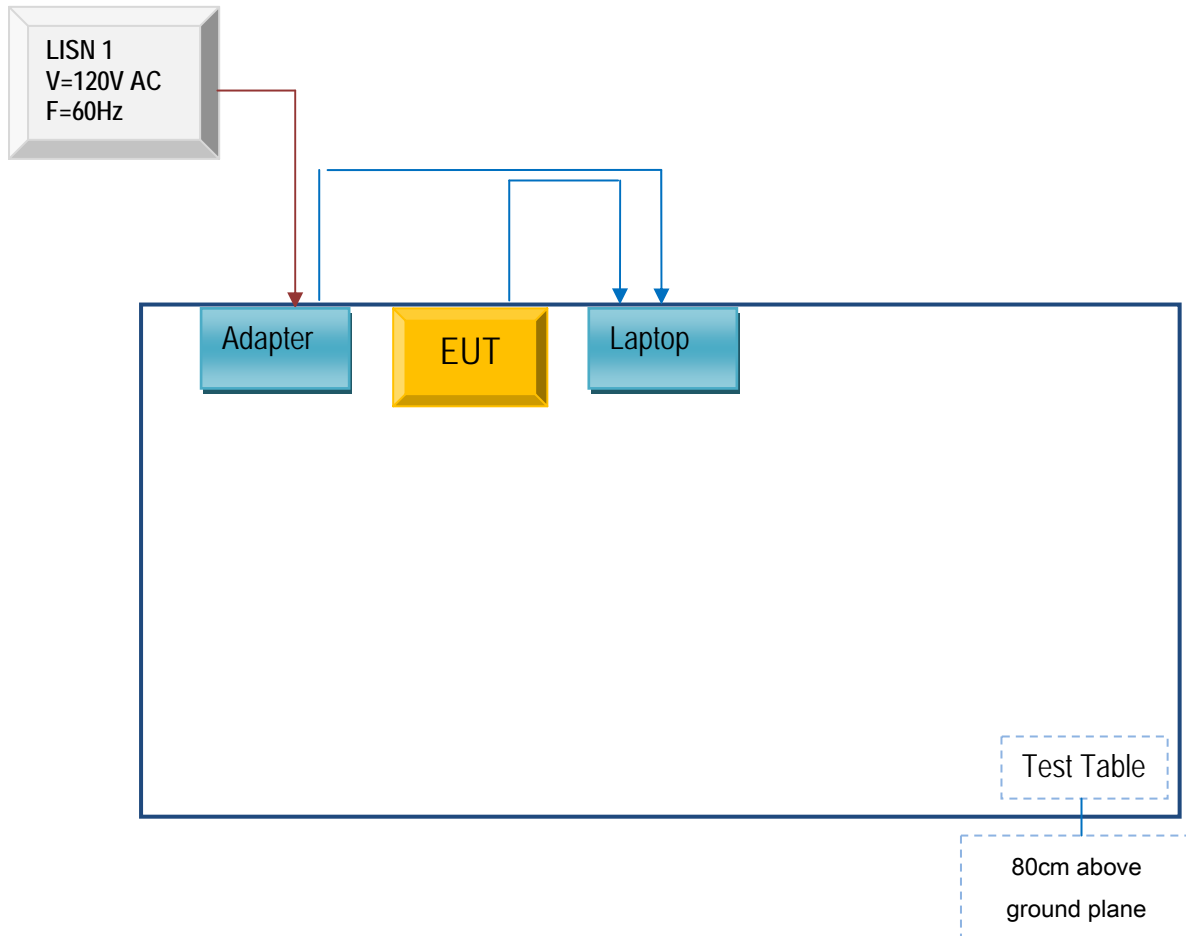


Radiated Spurious Emissions Test Setup Above 1GHz

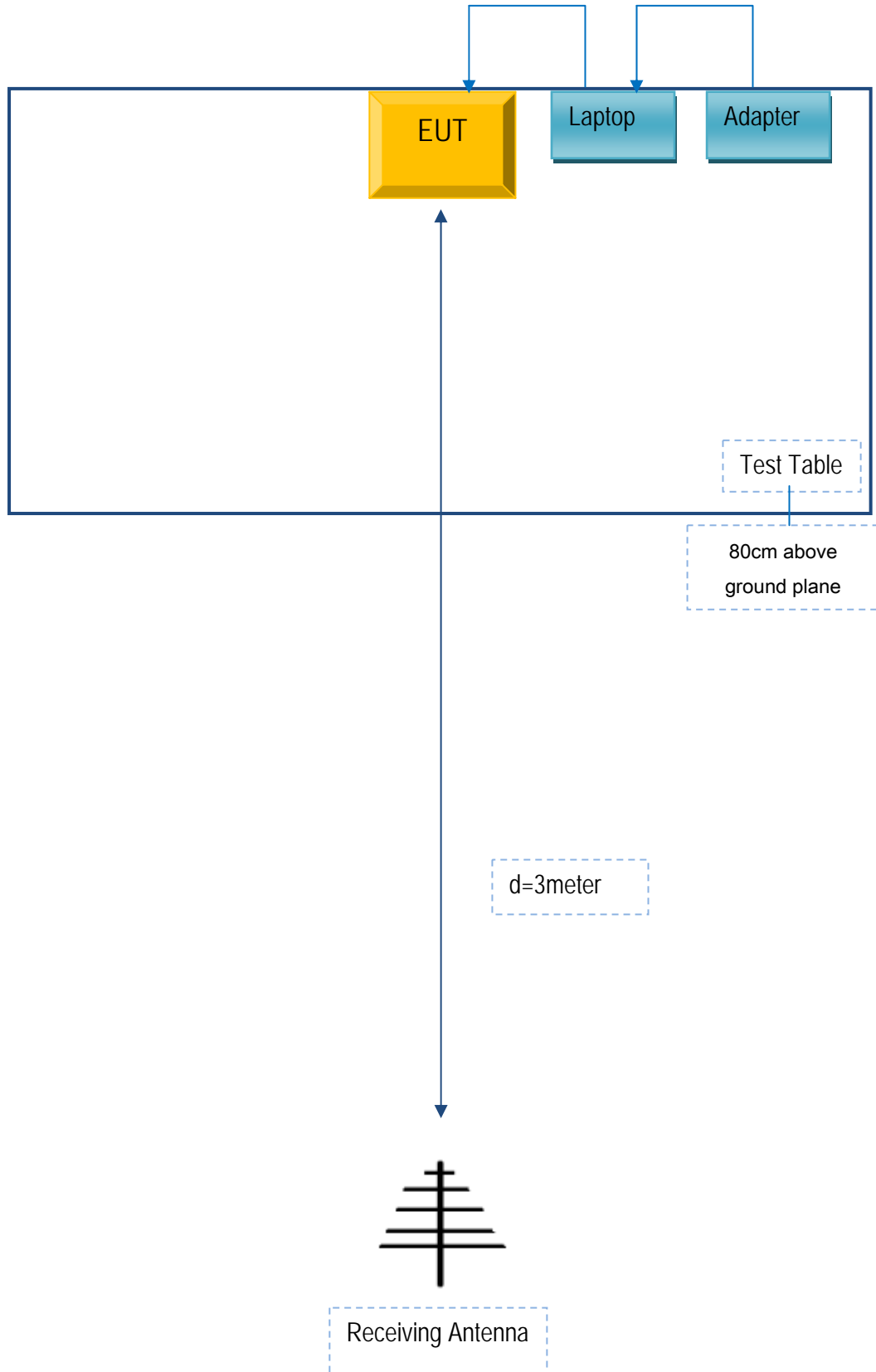
## Annex C. TEST SETUP AND SUPPORTING EQUIPMENT

### Annex C.ii. TEST SET UP BLOCK

#### Block Configuration Diagram for Conducted Emissions



### Block Configuration Diagram for Radiated Emissions





**Annex C. ii. SUPPORTING EQUIPMENT DESCRIPTION**

The following is a description of supporting equipment and details of cables used with the EUT.

Manufacturer	Equipment Description	Model	Calibration Date	Calibration Due Date
Lenovo	Lenovo Laptop	E40& 0579A52	N/A	N/A

Test Report	15070121-FCC-E1 Rev2
Page	26 of 27

**Annex D. User Manual / Block Diagram / Schematics / Partlist**

Please see Attachment

Test Report	15070121-FCC-E1 Rev2
Page	27 of 27

## Annex E. DECLARATION OF SIMILARITY

N/A