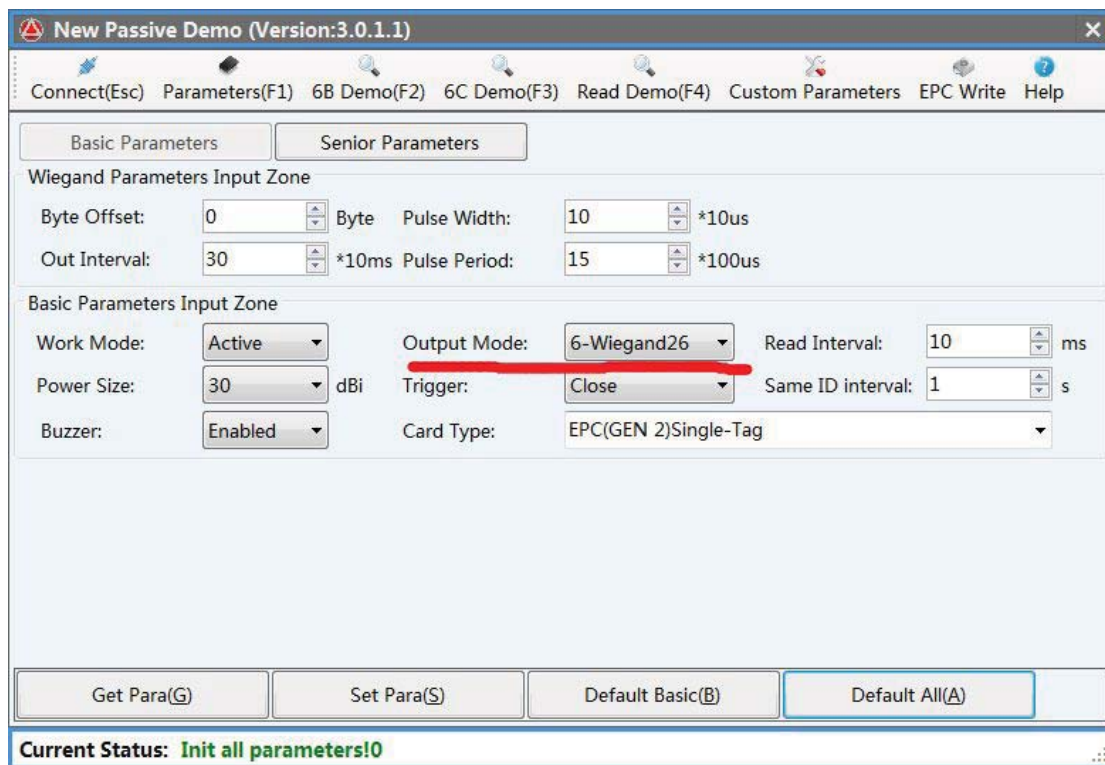


# UHF Reader User Manual

## 1. Access control board wiegand interface connect:

### a) Note

- i. Connect PC by serial ports: ( connect Brown Yellow Blue cable with connector to the serial port DB9 on the back of PC),open DEMO software from CD, change Output Mode to Wiegand 26 or Wiegand 34 ( According to the Mode in your control board ,make sure your control model with Wiegand26 or Wiegand34,) other parameters is Default. (As follows)



- ii. Connect Loop detector controller , set the basic parameters of the trigger to Low level .(As follows)

**New Passive Demo (Version:3.0.1.1)**

Connect(Esc) Parameters(F1) 6B Demo(F2) 6C Demo(F3) Read Demo(F4) Custom Parameters EPC Write Help

Basic Parameters Senior Parameters

**Wiegand Parameters Input Zone**

Byte Offset: 0 Byte Pulse Width: 10 \*10us  
 Out Interval: 30 \*10ms Pulse Period: 15 \*100us

**Basic Parameters Input Zone**

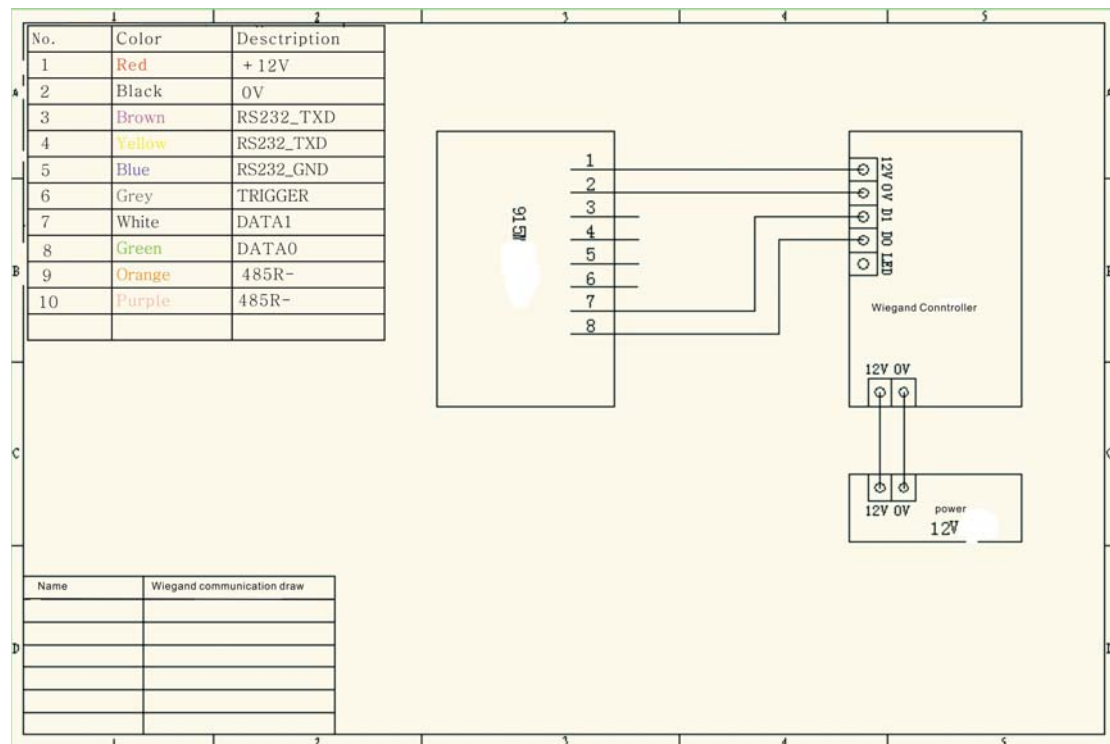
Work Mode: Active Output Mode: 6-Wiegand26 Read Interval: 10 ms  
 Power Size: 30 dBi Trigger: Low Trigger Same ID interval: 1 s  
 Buzzer: Enabled Card Type: EPC(GEN 2)Single-Tag

Get Para(G) Set Para(S) Default Basic(B) Default All(A)

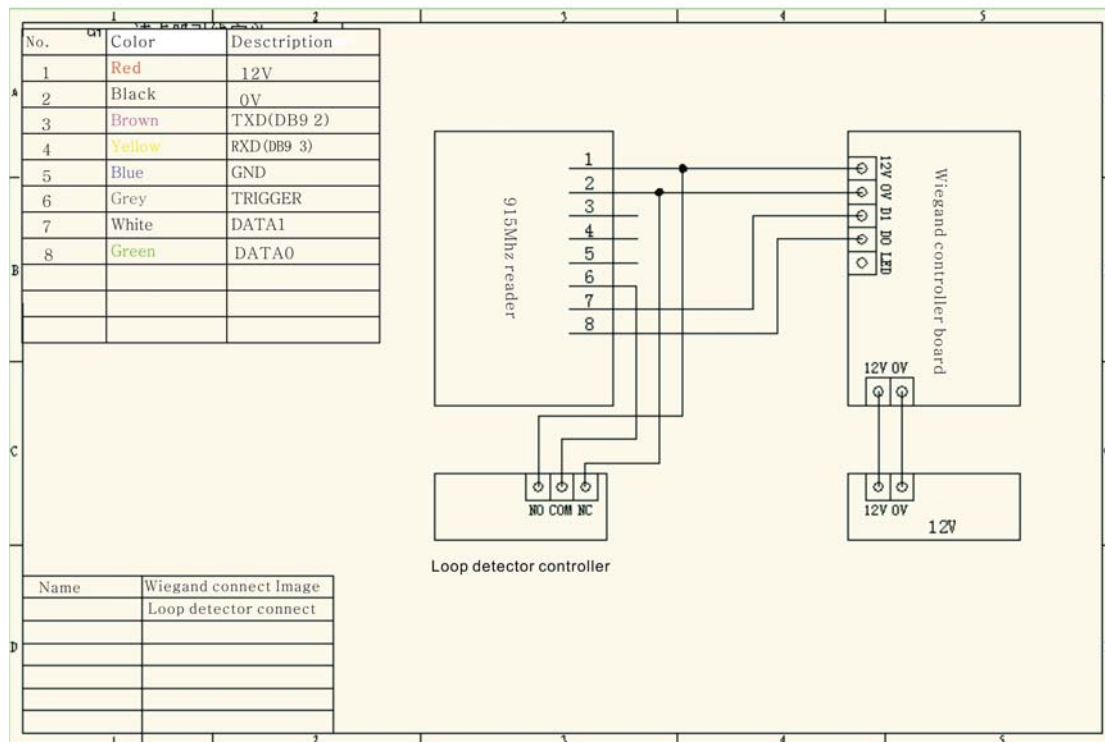
**Current Status:**

Note: Issue card machine connect controller, Power need set under 12 :

b) Connect image



Wiegand communication Connecting Image



Loop detector controller image

## 2. Controller Syris communication connecting

### a) Note

- i. Connect PC by serial ports: ( connect Brown Yellow Blue cable with connector to the serial port DB9 on the back of PC) open (DEMO), change Output Mode to Syris, other parameters is Default. (As follows)

**New Passive Demo (Version:3.0.1.1)**

Connect(Esc) Parameters(F1) 6B Demo(F2) 6C Demo(F3) Read Demo(F4) Custom Parameters EPC Write Help

Basic Parameters Senior Parameters

Wiegand Parameters Input Zone

Byte Offset: 0 Byte Pulse Width: 10 \*10us

Out Interval: 30 \*10ms Pulse Period: 15 \*100us

Basic Parameters Input Zone

Work Mode: Active Output Mode: 5-Syris Read Interval: 10 ms

Power Size: 30 dBi Trigger: Low Trigger Same ID interval: 1 s

Buzzer: Enabled Card Type: EPC(GEN 2)Single-Tag

Get Para(G) Set Para(S) Default Basic(B) Default All(A)

Current Status:

- ii. When connect loop detector controller , set the basic parameters of the trigger to Low level .(As follows)

**New Passive Demo (Version:3.0.1.1)**

Connect(Esc) Parameters(F1) 6B Demo(F2) 6C Demo(F3) Read Demo(F4) Custom Parameters EPC Write Help

Basic Parameters Senior Parameters

Wiegand Parameters Input Zone

Byte Offset: 0 Byte Pulse Width: 10 \*10us

Out Interval: 30 \*10ms Pulse Period: 15 \*100us

Basic Parameters Input Zone

Work Mode: Active Output Mode: 5-Syris Read Interval: 10 ms

Power Size: 30 dBi Trigger: Low Trigger Same ID interval: 1 s

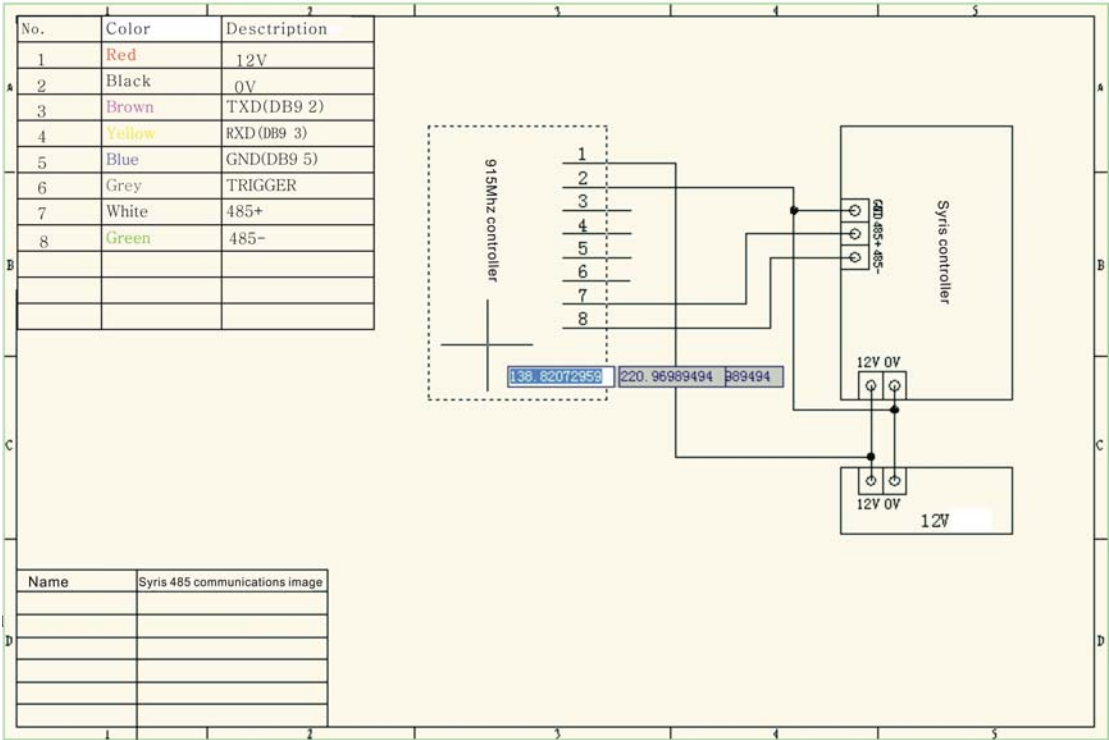
Buzzer: Enabled Card Type: EPC(GEN 2)Single-Tag

Get Para(G) Set Para(S) Default Basic(B) Default All(A)

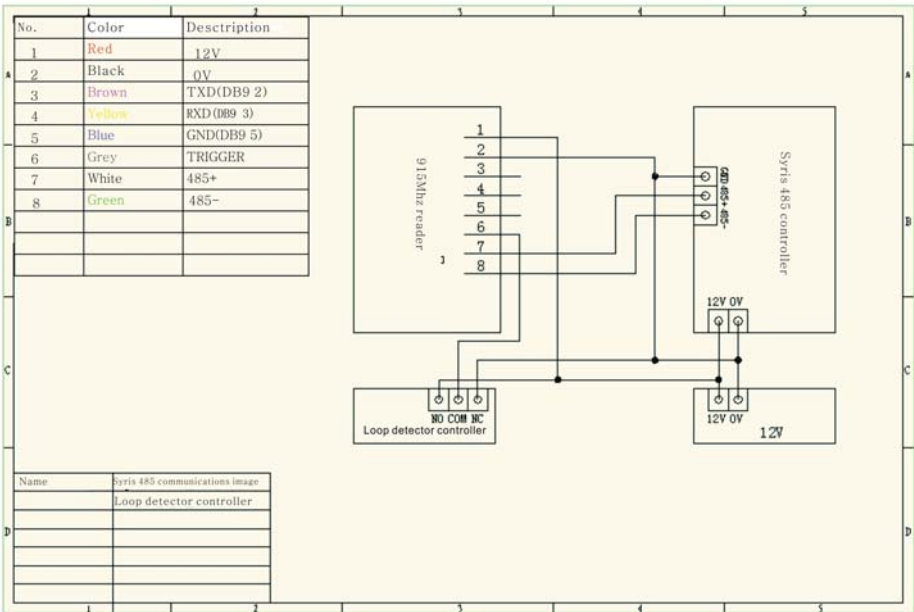
Current Status:

Note: Note: Issue card machine connect controller, Power need set under 12 :

b) Connect Image



c) Connect Loop detector image



#### FCC Statement

This equipment has been tested and found to comply with the limits for a Class B digital device, pursuant to Part 15 of the FCC Rules. These limits are designed to provide reasonable protection against harmful interference in a residential installation. This equipment generates uses and can radiate radio frequency energy and, if not installed and used in accordance with the instructions, may cause harmful interference to radio communications. However, there is no guarantee that interference will not occur in a particular installation. If this equipment does cause harmful interference to radio or television reception, which can be determined by turning the equipment off and on, the user is encouraged to try to correct the interference by one or more of the following measures:

- Reorient or relocate the receiving antenna.
- Increase the separation between the equipment and receiver.
- Connect the equipment into an outlet on a circuit different from that to which the receiver is connected.
- Consult the dealer or an experienced radio/TV technician for help.

This device complies with part 15 of the FCC Rules. Operation is subject to the following two conditions: (1) This device may not cause harmful interference, and (2) this device must accept any interference received, including interference that may cause undesired operation.

Changes or modifications not expressly approved by the party responsible for compliance could void the user's authority to operate the equipment.

The antenna(s) used for this transmitter must be installed to provide a separation distance of at least 25 cm from all persons and must not be co-located or operating in conjunction with any other antenna or transmitter.