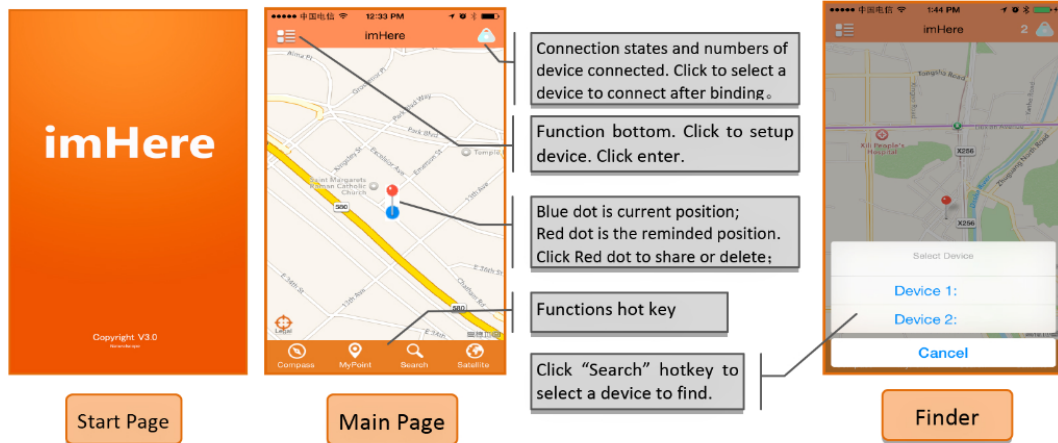
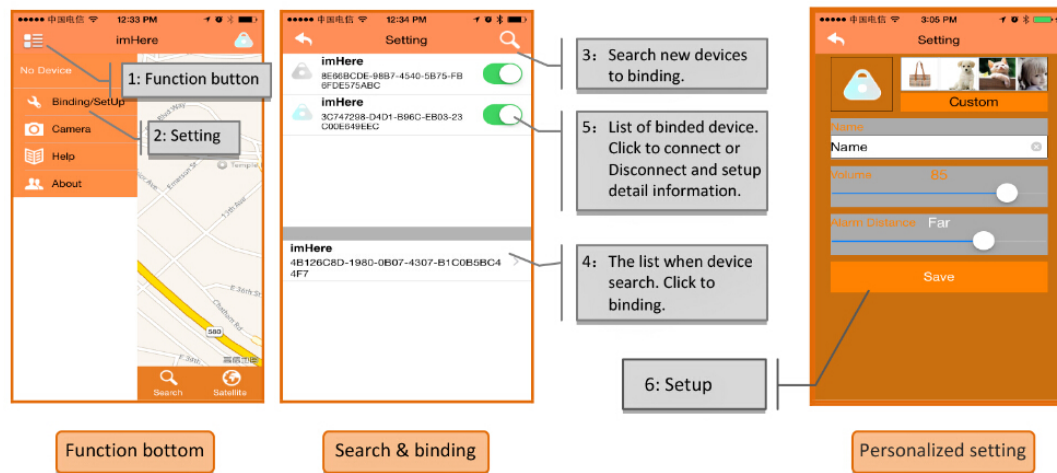


1、Start-up, Main page



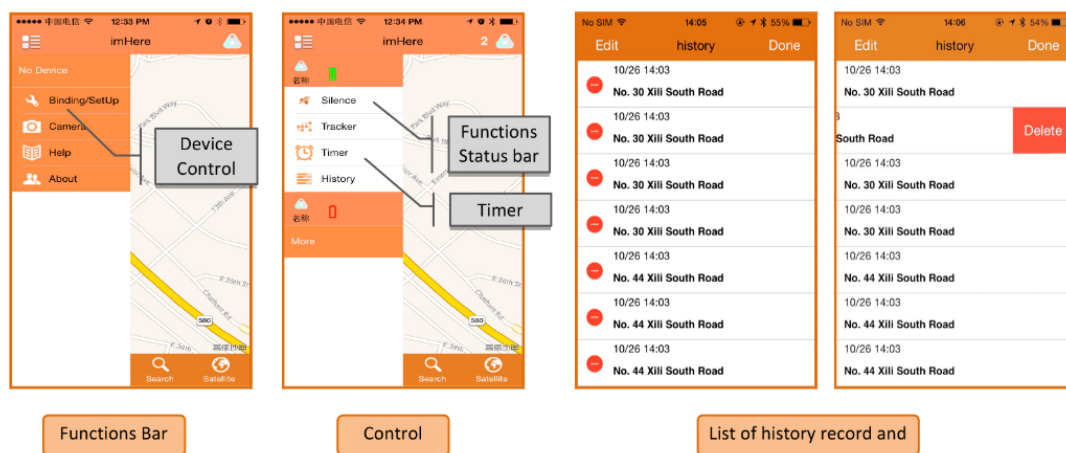
1

2、Search, Binding, Setup



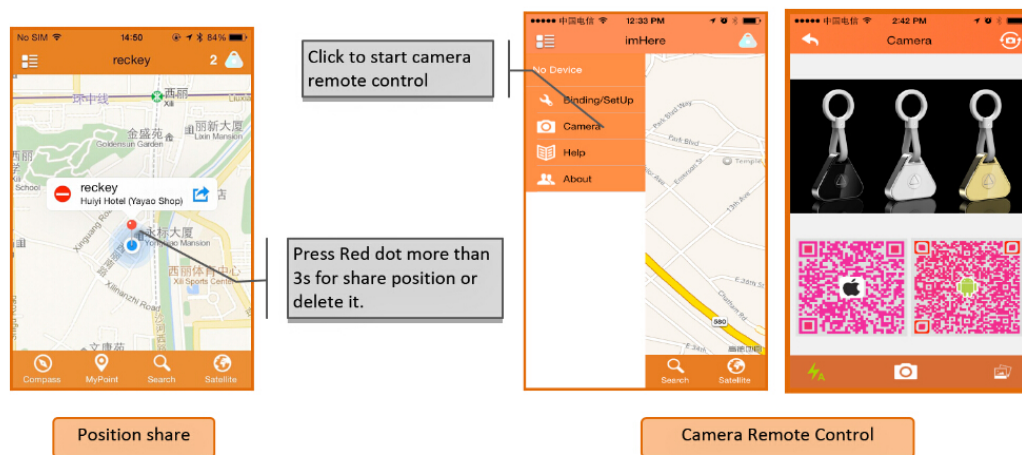
2

3、Device control, History record



3

4、Position Share, Camera remote control

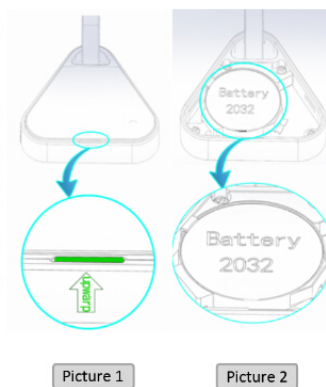


4

5、Others

Before start to use **imHere**, you must set battery at first as below:

- Open back-cover (Picture 1).
- Take out the battery insulation protection film (if inside, option):
- Check model number of battery should be 2032, insert it into the **imHere** with correct downwards of battery negative pole. (Picture 2).
- Make sure battery is OK and recover back cover. You can use it now.
- Reconnection is need after battery changed.



Warning:

- Negative pole of battery must be downwards.
- Battery cannot be recharged. Please Properly handle waste battery.
- Please keep the device dry, rigorous immersion or long-term storage and use in damp environment; otherwise it will cause permanent damage.
- Do not use more than 5Kg of external extrusion equipment, prohibit the equipment contact with sharp, hard objects, and avoid the cover glass or other rupture, causing accidental injuries.
- This product only with iPhone 4s, Android version 4.3 system or later mobile phone with Bluetooth 4.0 use.
- Application software please scan the corresponding 2D code to download and install.
- Environment of battery cannot in high-temperature. Remove battery when not used for a long time.
- Follow local legal use of wireless products (2.4GHz);

Statements:

Refer to the guidelines for the use of the content, details please refer to the website of the latest version.
The scenery of the road-eyes reserves the right to change and has the right of final explanation.

5

This device complies with part 15 of the FCC rules. Operation is subject to the following two conditions: (1) this device may not cause harmful interference, and (2) this device must accept any interference received, including interference that may cause undesired operation.

Changes or modifications not expressly approved by the party responsible for compliance could void the user's authority to operate the equipment.