

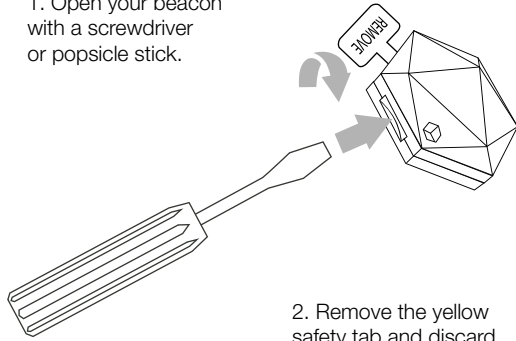
Model name:1.0
Brand name:XY
FCC ID:2ADLNXY
IC:12506A-XY



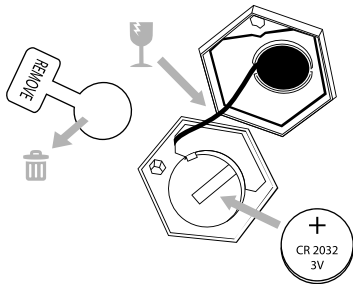
Bluetooth 4.0
Personal Beacon Users guide

Setting Up Your Beacon

1. Open your beacon with a screwdriver or popsicle stick.



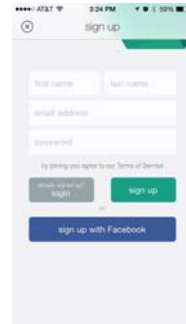
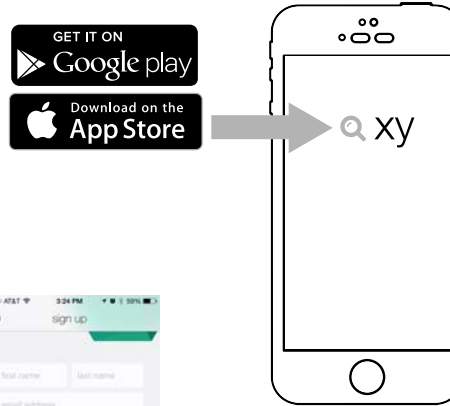
2. Remove the yellow safety tab and discard. Replace the battery positive (+) side up.



3. Close your beacon tightly to ensure a water resistant seal. The hexagon shaped holes should line up.

Setting Up Your Account

1. Download the free XY Find It app at the Google Play or Apple App Store



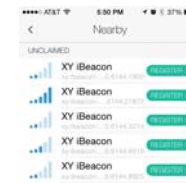
2. Open the XY Find It app and sign up. You can create an account with your email or log in via Facebook.

Sync Your Beacon

1. Place your beacon next to your device and click +.



2. Select your beacon from the list.



Note: if you are registering multiple beacons, keep other beacons several feet away. Select the beacon with the strongest signal.

3. Allow the entire circle to fill with color while it syncs. You can also add a photo after the sync completes.



4. Touch and drag any beacons you don't want to actively track to the "No Alerts" column on the right.

This device complies with part 15 of the FCC rules. Operation is subject to the following two conditions:

- (1) this device may not cause harmful interference, and
- (2) this device must accept any interference received, including interference that may cause undesired operation.

Changes or modifications to this unit not expressly approved by the party responsible for compliance could void the user's authority to operate the equipment.

This device complies with Industry Canada licence-exempt RSS standard(s). Operation is subject to the following two conditions:

- (1) this device may not cause interference, and
- (2) this device must accept any interference, including interference that may cause undesired operation of the device.

Le présent appareil est conforme aux CNR d'Industrie Canada applicables aux appareils radio exempts de licence. L'exploitation est autorisée aux deux conditions suivantes :

- (1) l'appareil ne doit pas produire de brouillage, et
- (2) l'utilisateur de l'appareil doit accepter tout brouillage radioélectrique subi, même si le brouillage est susceptible d'en compromettre le fonctionnement.