

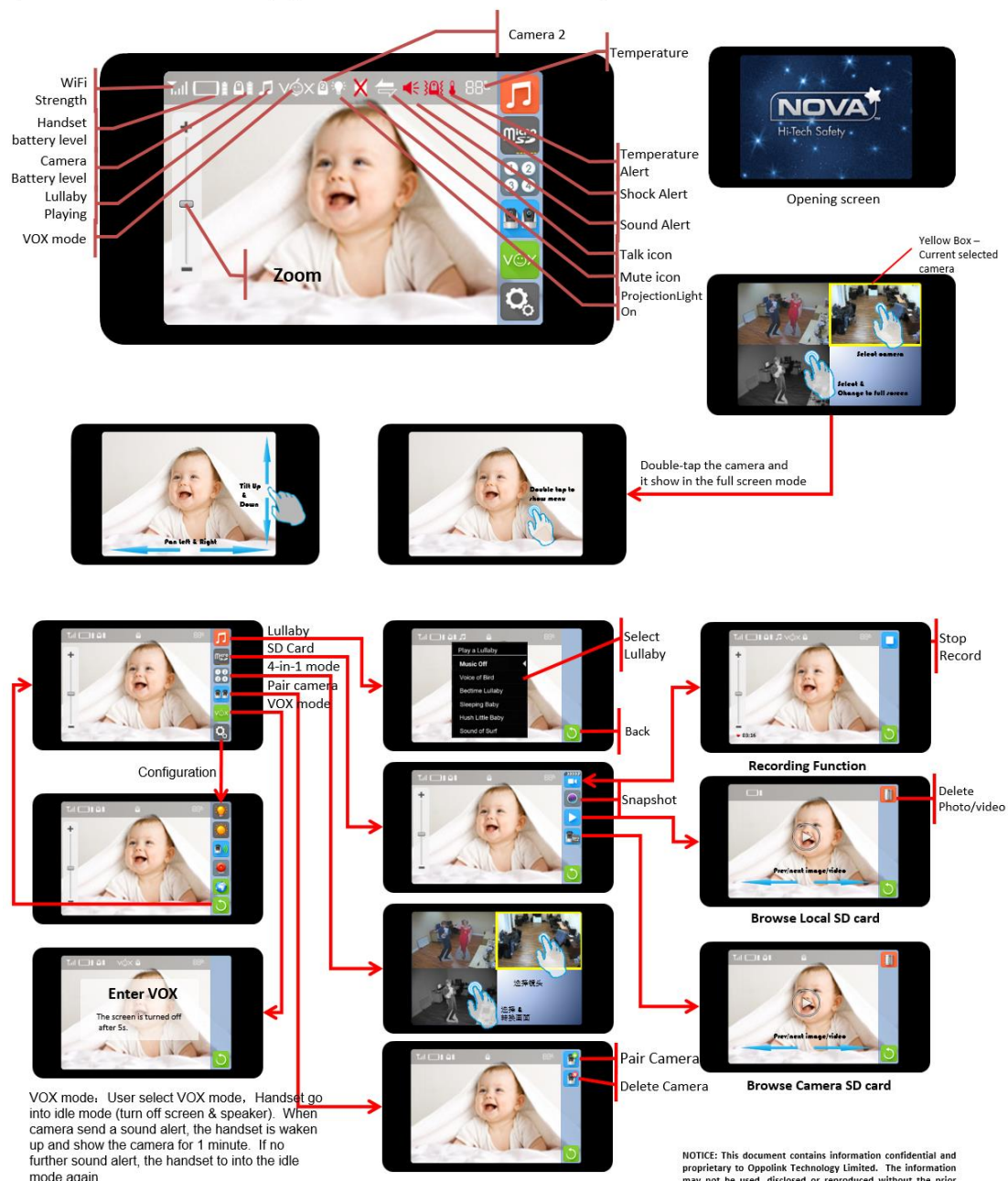
VN8-H User' s guide

1 Turn On and Off the unit

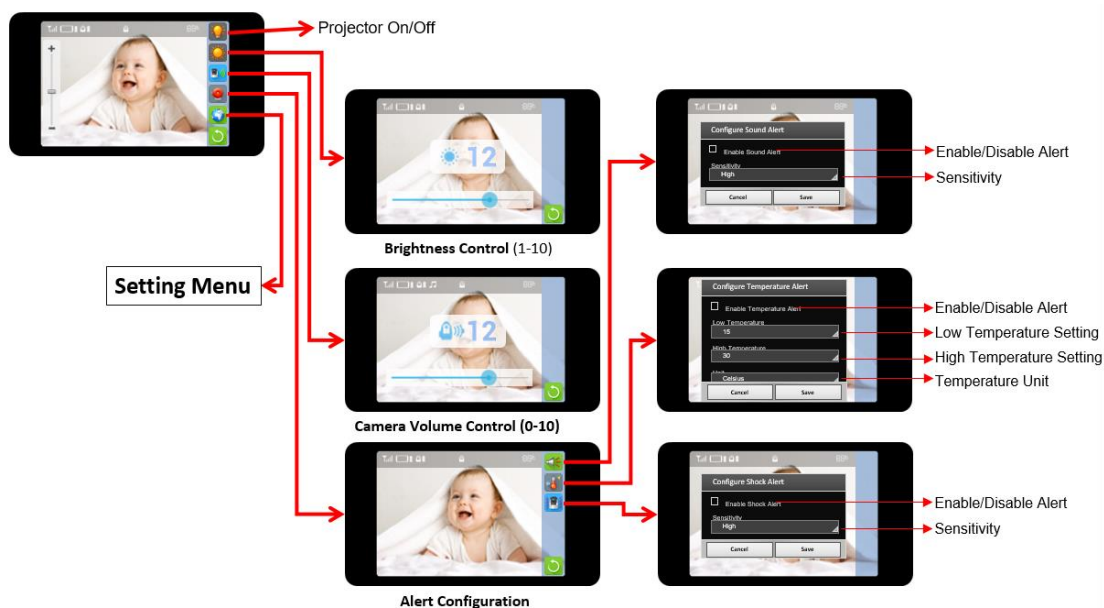
- Press and hold the Power button for 3s, the unit will be turned on.
- In On mode, long press the Power button and it will display "Power off" icon, press the icon on display, the unit will be turned off.
- Press Vol +/- button to increase or decrease volume button.

2 Operation

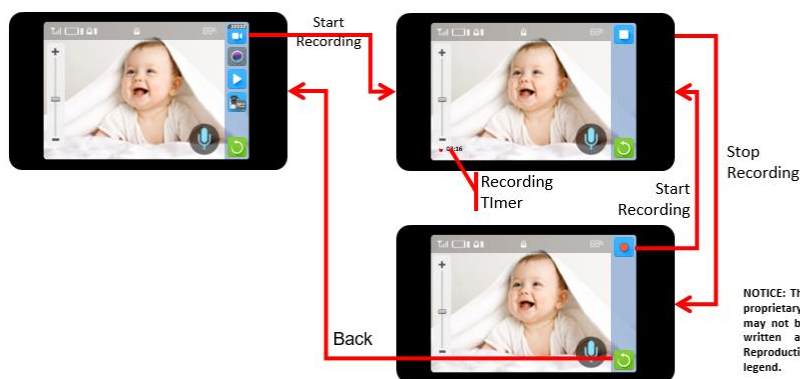
Vision Nova 8 App – Main Screen (v2.5)



NOTICE: This document contains information confidential and proprietary to Oppolink Technology Limited. The information may not be used, disclosed or reproduced without the prior written authorization of Oppolink Technology Limited. Reproduction of any section of this document must include this legend.

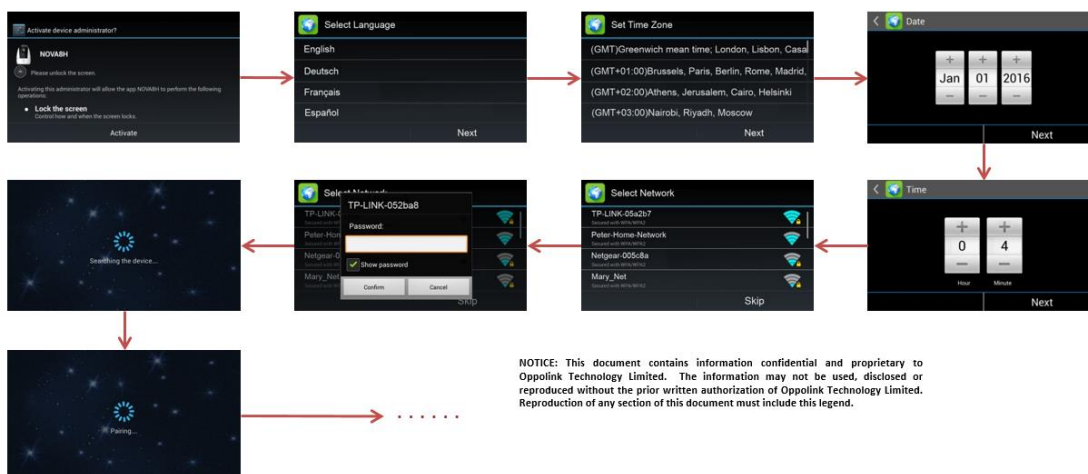


NOTICE: This document contains information confidential and proprietary to Oppolink Technology Limited. The information may not be used, disclosed or reproduced without the prior written authorization of Oppolink Technology Limited. Reproduction of any section of this document must include this legend.



NOTICE: This document contains information confidential and proprietary to Oppolink Technology Limited. The information may not be used, disclosed or reproduced without the prior written authorization of Oppolink Technology Limited. Reproduction of any section of this document must include this legend.

First Boot Setup Menu



NOTICE: This document contains information confidential and proprietary to Oppolink Technology Limited. The information may not be used, disclosed or reproduced without the prior written authorization of Oppolink Technology Limited. Reproduction of any section of this document must include this legend.

FCC statement:

Warning: Changes or modifications to this unit not expressly approved by the party responsible for compliance could void the user's authority to operate the equipment.

Note: This equipment has been tested and found to comply with the limits for a Class B digital device, pursuant to Part 15 of the FCC Rules. These limits are designed to provide reasonable protection against harmful interference in a residential installation. This equipment generates, uses and can radiate radio frequency energy and, if not installed and used in accordance with the instructions, may cause harmful interference to radio communications. However, there is no guarantee that interference will not occur in a particular installation. If this equipment does cause harmful interference to radio or television reception, which can be determined by turning the equipment off and on, the user is encouraged to try to correct the interference by one or more of the following measures:

- Reorient or relocate the receiving antenna.
- Increase the separation between the equipment and receiver.
- Connect the equipment into an outlet on a circuit different from that to which the receiver is connected.
- Consult the dealer or an experienced radio/TV technician for help.

FCC RF Radiation Exposure and SAR Statements SAR Statement The VisionNova has been tested for body-worn Specific Absorption Rate (SAR) compliance. The FCC has established detailed SAR requirements and has established that these requirements. RF Exposure Information The radio module has been evaluated under FCC Bulletin OET 65C (01-01) and found to be compliant to the requirements as set forth in CFR 47 Sections, 2.1093, and 15.247 (b) (4) addressing RF Exposure from radio frequency devices. This model meets the applicable government requirements for exposure to radio frequency waves. The highest SAR level measured for this device was 0.056W/kg.

FCC ID: 2ADKQ-VN8H

This device complies with Part 15 of the FCC Rules. Operation is subject to the following two conditions:

- (1) This device may not cause harmful interference, and
- (2) This device must accept any interference received, including interference that may cause undesired operation.



Manufacture address: Ljabruveien 39, PO. Box 90 Nordstrand, N-1112 Oslo, Norway