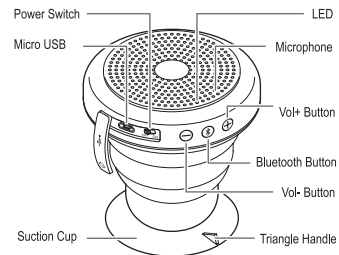


S1

Expandable Speaker User's Manual

Features:

- Only 1 1/4" height to fit in a jean's pocket
- Expandable for big sound
- Suction cup for versatile use
- Vibration mode to turn a surface into a subwoofer
- Drop-proof, splash-proof and dirt-proof
- Used as a stand for phones and tablets
- Adjustable to different sizes and shapes.



Power Switch

When the power switch is set to ON position the S1 speaker will switch on with a sound.

Automatic Power-off

When Bluetooth is disconnected for 5 minutes, the S1 speaker will automatically switch off to preserve battery power. To turn it on again, please set the switch to OFF position, then ON again.

Paring

When first switched on, the S1 speaker will enter paring mode automatically. The LED will flash quickly in blue during paring. Please select the device named 'ZTE S1' when it appears in your Bluetooth setting screen. To enter paring mode for other devices, please hold down the Bluetooth button for over 3 seconds until the Bluetooth LED flashes quickly.

Bluetooth Speaker

Pressing the Bluetooth button once can stop/pause the music player. You can use the Vol+ and Vol- button to adjust the volume for the speaker.

Hands-free Conference Call

When the phone rings, pressing the Bluetooth button once will answer the call in hands-free speaker phone mode. When the phone is idle, pressing the Bluetooth button twice will redial the number.

Battery

The unit has a 500mAh Li-Polymer rechargeable battery. When battery is low, the LED will flash in red. You can charge the unit via the micro-USB port. The charging time is about 2 hours. The average play time is 6 hours. You can monitor the battery usage on your mobile device.

-1-

-2-

-3-

-4-

-5-

-6-

-7-

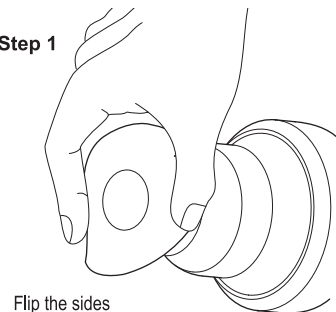
Suction Cup

To secure the speaker on a smooth surface such as glass, please take the steps as follows:

Step 1. Make sure the bottom of the suction cup is clean. Flip the sides of the suction cup.

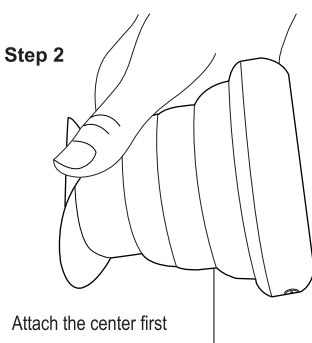
Step 2. Press the center of the suction cup to the surface while holding the unit as indicated on the picture, then release the sides of the suction cup.

Step 1



Flip the sides

Step 2



Attach the center first

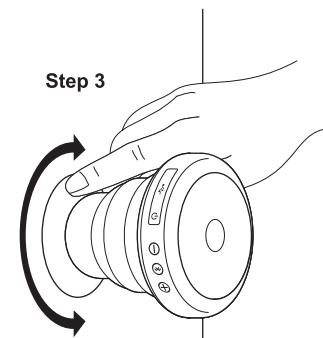
Step 3. Push the sides of the suction cup against the surface in a complete circle to drive the air out.

Warning: If the above steps aren't taken properly, the unit may fall off after a while.

Releasing the Suction Cup

To release the speaker, please pull the little triangle handle instead of the top of the speaker. Pulling the top of the speaker may break it as the suction force can be very strong.

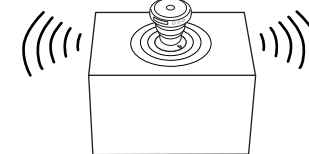
Step 3



Push the air out

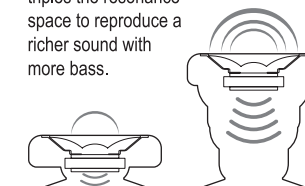
Vibration Action

When the S1 speaker is placed on a large surface, it can drive the surface to produce more bass. You can experience with different surfaces.



Expandability

It is the smaller the better for portability. When expanded, the S1 speaker triples the resonance space to reproduce a richer sound with more bass.



FCC Statement

- Changes or modifications not expressly approved by the party responsible for compliance could void the user's authority to operate the equipment.
- This equipment has been tested and found to comply with the limits for a Class B digital device, pursuant to Part 15 of the FCC Rules. These limits are designed to provide reasonable protection against harmful interference in a residential installation. This equipment generates uses and can radiate radio frequency energy and, if not installed and used in accordance with the instructions, may cause harmful interference to radio communications. However, there is no guarantee that interference will not occur in a particular installation. If this equipment does cause harmful interference to radio or television reception, which can be determined by turning the equipment off and on, the user is encouraged to try to correct the interference by one or more of the following measures:
 - Reorient or relocate the receiving antenna.
 - Increase the separation between the equipment and receiver.
 - Connect the equipment into an outlet on a circuit different from that to which the receiver is connected.
 - Consult the dealer or an experienced radio/TV technician for help

This device complies with part 15 of the FCC rules. Operation is subject to the following two conditions (1) this device may not cause harmful interference, and (2) this device must accept any interference received, including interference that may cause undesired operation