

# **SS302 DONGLE**

## **User Manual**



Document Number: EL\_SS302\_001

**enblink**

This document contains information of ENBLINK's product.

Specifications and information herein are subject to change without notice.

Use of this specification for product design requires an executed license agreement from ENBLINK.

ENBLINK shall not be liable for technical or editorial errors or omissions contained herein; nor for incidental or consequential damages resulting from the furnishing, performance, or use of this material. All parts of ENBLINK Tech sheet are protected by copyright law, and all rights are reserved.

This documentation may not, in whole or in part, be copied, photocopied, reproduced, translated, or reduced to any electronic medium or machine readable form without prior consent, in writing, from ENBLINK.

ENBLINK Co., Ltd.

#212, 105-1 Seoul National Univ., Daehak-dong, Gwanak-gu, Seoul, Korea

Tel. 82-70-7012-0830

<http://www.ENBLINK.com>

# Table of Contents

<b>1. Safety Information .....</b>	<b>4</b>
<b>2. Product Introduction.....</b>	<b>5</b>
2.1. Specification .....	5
2.2. Components.....	6
2.3. Term of part.....	7
<b>3. How to register SS302 .....</b>	<b>8</b>
3.1. Connect SS302 to Google TV.....	8
3.2. Paring phone and Google TV .....	8
<b>4. Basic Information.....</b>	<b>10</b>
4.1. Dashboard .....	10
4.2. Sub-menu .....	11
<b>5. How to control.....</b>	<b>12</b>
5.1. Paring device (Inclusion) .....	12
5.2. Portable Inclusion .....	13
5.3. Compatible devices.....	14
5.4. Control devices .....	14
<b>6. Product Information.....</b>	<b>16</b>
6.1. Product information note.....	16
6.2. Customer Support.....	16
6.3. Warranty .....	16

# 1. Safety Information



## **Do not give the dongle any shock or impact.**

Drop or shock of the dongle may change the shape and it may lead malfunction  
Please use at stable place without fall risk.



## **Do not disassemble your dongle.**

Please do not attempt to disassemble, modify or repair the dongle. It can be broken.



## **Use the dongle in operation temperatures.**

The dongle is designed to be operated in proper temperatures, use the dongle carefully in a high temperature change environment. Use or keep of your dongle outside of the recommended temperature ranges or on a humid place could cause damage or malfunction of the device. (Recommended temperature range: -20 ~ 50°C, relative humidity: 0 ~ 95%)



## **Avoid magnetic materials.**

Avoid any magnetic contact that is not shielded or protected on or near the dongle.



## **Be careful a fire or water.**

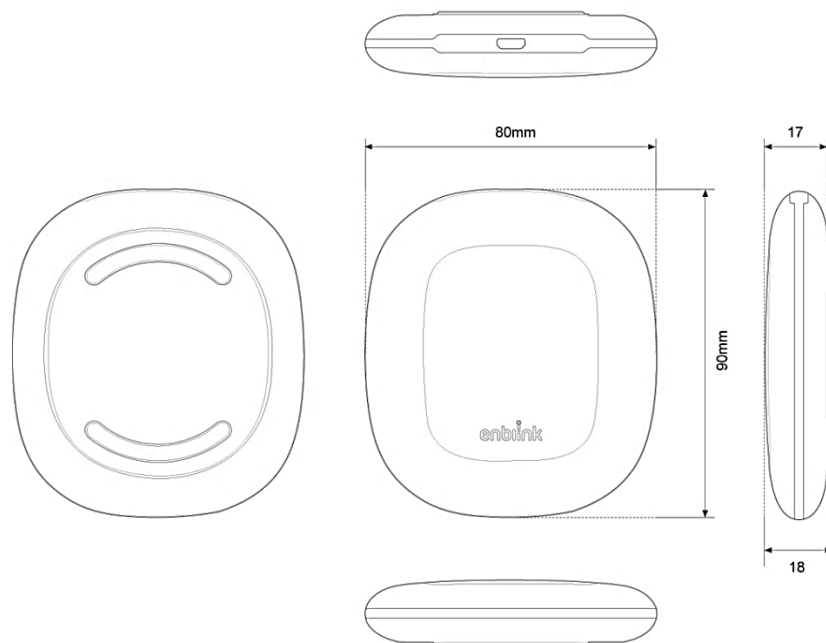
Contact a fire could change the shape and it may lead malfunction. The dongle is not a water protect product. Contact with liquids might cause a short circuit or damage parts.

## 2. Product Introduction

SS302 is a home automation gateway connected via USB. It is connected to an USB port in a Google and can controls any Z-Wave devices like gas valve actuators, power plugs or switches at home with mobile phone or tablet easily

- Gateway systems: Home automation gateway and control devices like light switches or sensors are installed at home. You can monitor status and control devices.
- Cloud servers: Relays between gateway systems and remote controllers such like monitoring and controlling devices.
- Remote controllers: Provides users interfaces to control and monitor devices at home. It also notifies events in real time.
- Scene(user defined): Events to have triggers happened in certain conditions of devices can be defined. Different devices connected each other may carry new functions

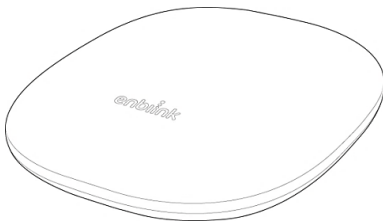
### 2.1. Specification



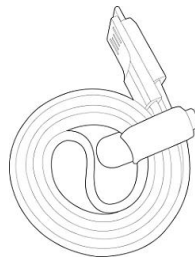
- Optimized 8051 CPU Core
- TX mode current typ. 36mA@0 dBm

- RX mode current typ. 32mA
- Normal mode current typ. 15mA
- Sleep mode current typ. 1 $\mu$ A
- Receiver sensitivity with SAW filter down to -103dBm @ 9.6kbps
- Transmit power with SAW filter up to +4dBm
- Z-Wave 9.6/40/100kbps data rates
- Regulatory Compliance
  - ACMA: AS/NEZS 4268
  - CE: EN 300 220/489
  - FCC: CFR 47 Part 15
  - IC: RSS-GEN/210
  - MIC: ARIB STD-T108

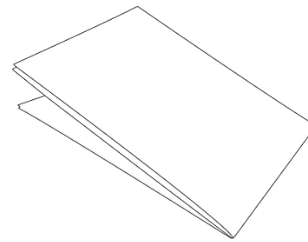
## 2.2. Components



SS302 dongle

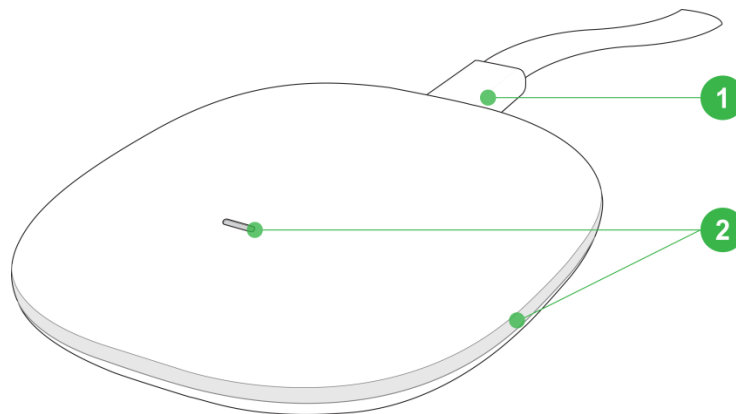


Micro USB Cable



User Manual

## 2.3. Term of part



1) Micro USB Cable

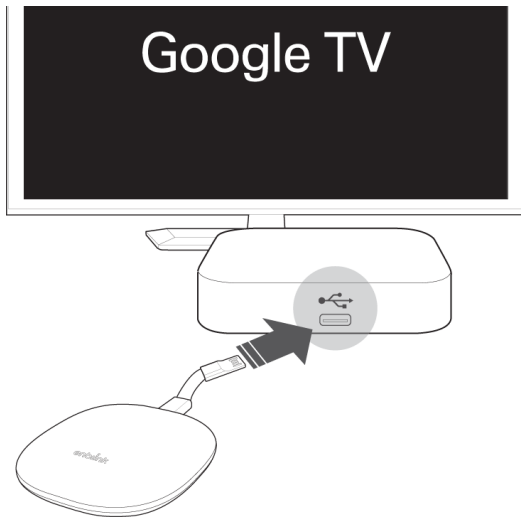
2) SS302 notification LED

	STATE	LED COLOR
1	Not connected	- (Off)
2	Initializing	Red->Blue->Green (colors are changed)
3	H/W checked	Blinking Blue
4	User defined notification	White Magenta Yellow Green Cyan Blue Each colors can be blinked Off

**Notice:** Once SS302 is registered, notification LED can be controlled in a lighting tile.

## 3. How to register SS302

### 3.1. Connect SS302 to Google TV



- 1) Place SS302 near Google TV.

**Notice:** Wireless reach of SS302 is up to 30m (100 feet). Obstacles such as wall, ceiling or fridge may attenuate the propagation around 3~40%, however, since Z-Wave devices form wireless mesh network, if there is another Z-wave device nearby, the gap can be reduced.

- 2) Plug an USB cable in the USB port of Google TV.

### 3.2. Paring phone and Google TV

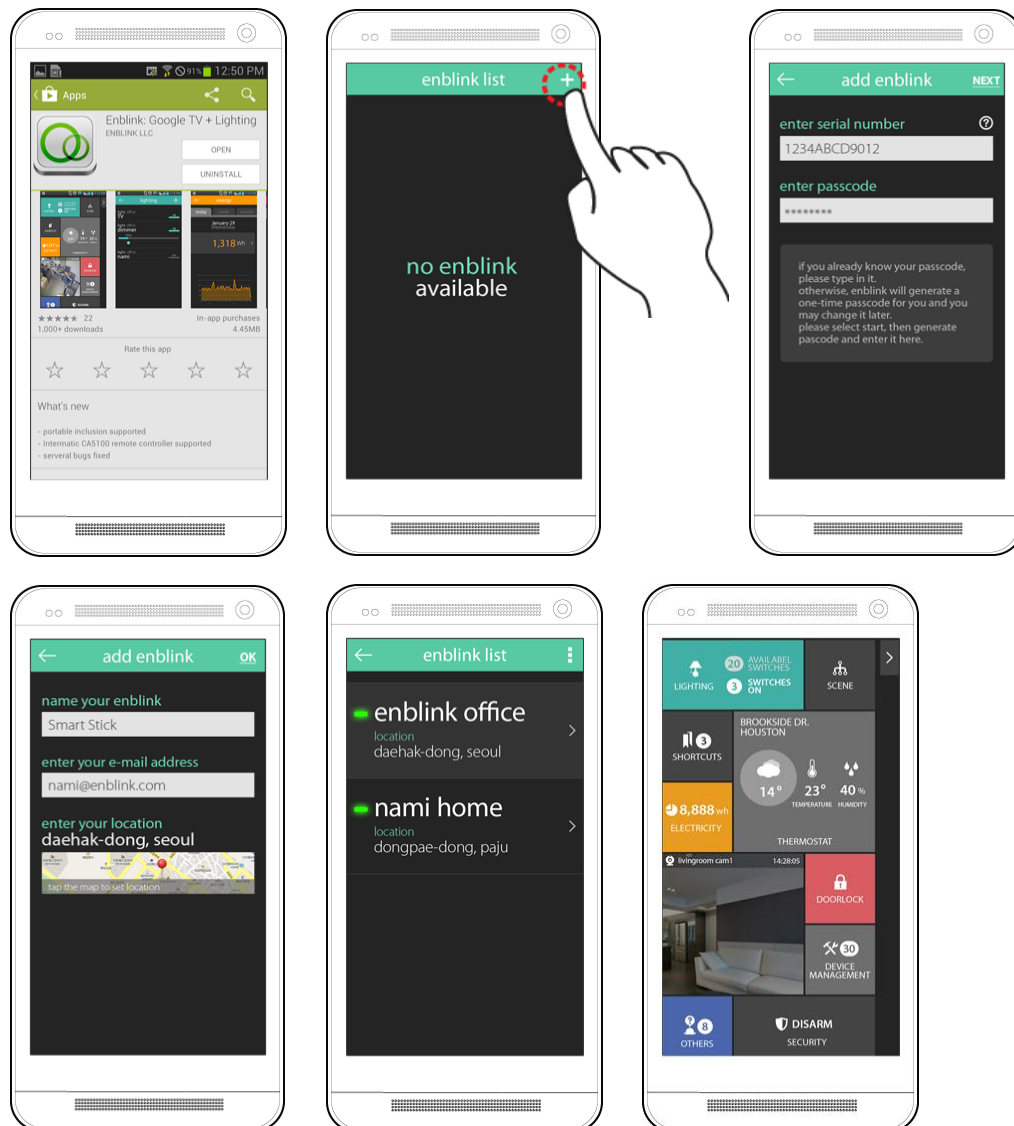


- 1) Download "Enblink setting for Google TV" application in the Google play store. Once application started, it shows a serial number and 8 digits passcode in the 'Get started' screen.

**Notice:** The serial number and the passcode are required on pairing the dongle in remote application. You may keep the screen until downloading the remote application and pairing the dongle, or you can memo them.



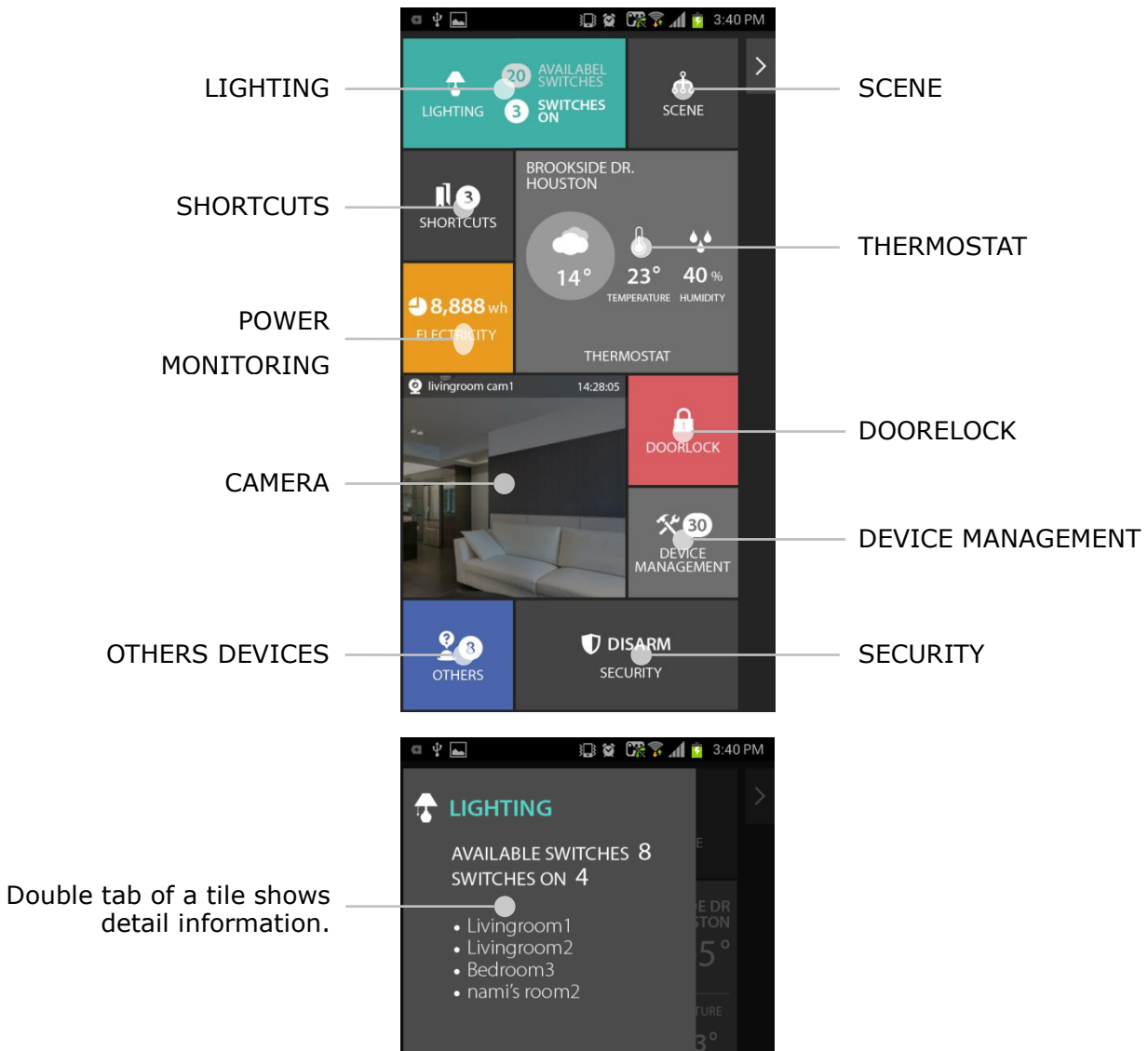
- 2) Each SS302 dongle is identified by a serial number, and the serial number is required to pair it.



- 3) Download "Enblink: Google TV + Lighting" application (the remote application) in the Google play store
- Notice:** The application can be installed on phones or tablets.
- 4) Launch the remote Enblink application and touch '+' (Add enblink) on the upper right corner.
- 5) SS302 Put the serial number and the passcode showed in the setting application.
- 6) Put your dongle name, e-mail address and location.
- 7) Once the dongle is paired, you can change your passcode in the sub menu -> enblink settings -> change passcode.

## 4. Basic Information

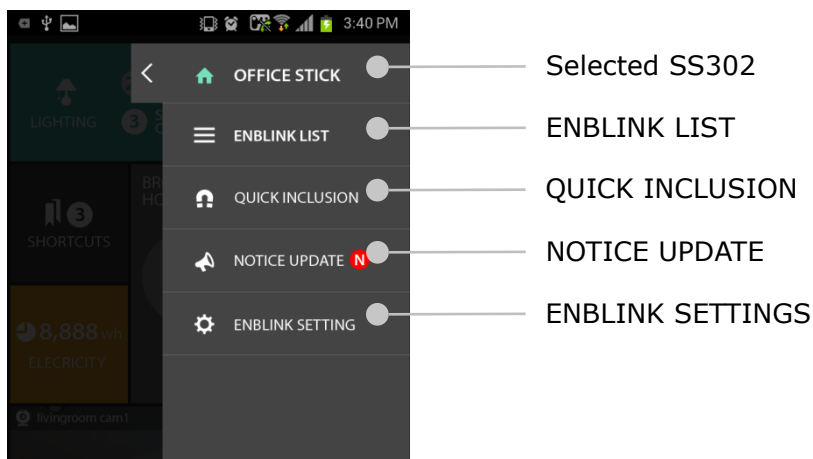
### 4.1. Dashboard



	Tile menu	Description
1	LIGHTING	Lights connected to switches or smart plugs can be controlled. The number of available switches and the number of switches turned on are displayed.
2	SCENE	Complicated actions can be executed according to scenarios defined by users. ex.) Turn the light on in a room if the door is opened
3	SHORTCUTS	Favorite devices can be accessed.
4	THERMOSTAT	Heating/Cooling/Fan can be controlled Location, outside temperature, indoor temperature and indoor

		humidity are displayed. * Double tab shows detail information.
5	POWER MONITORING	Energy usage measured by smart energy plugs or power meter can be monitored. * Double tab shows detail information.
6	CAMERA	Monitors where IP camera is installed in real time.
7	DOORLOCK	Door locks can be controlled and monitored. * Double tab shows detail information.
8	DEVICE MANAGEMENT	New devices can be paired or not available devices can be removed. * Double tab shows detail information.
9	OTHERS DEVICES	General functional devices can be controlled. * Double tab shows detail information.
10	SECURITY	Security mode (Arm/Disarm/Arm Stay) can be configured

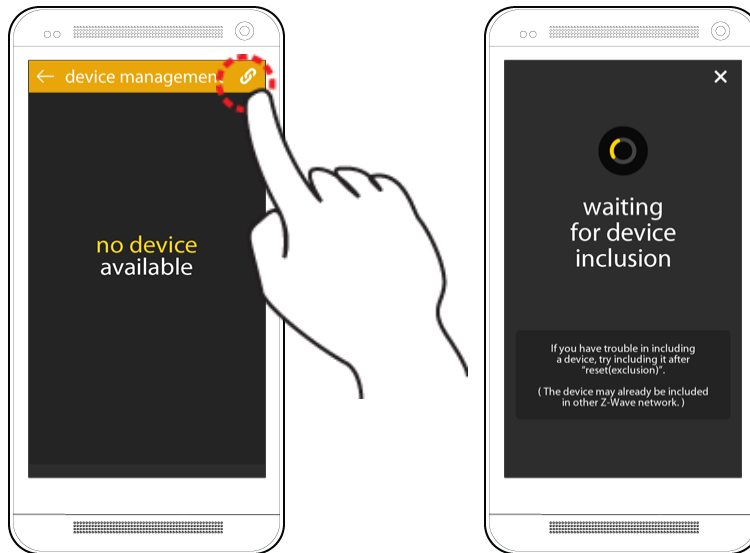
## 4.2. Sub-menu



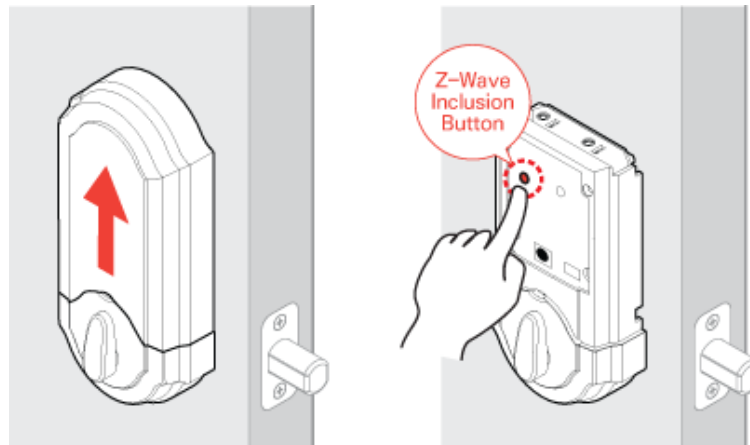
	Tile menu	Description
	<b>SS302 Name</b>	<b>Name of SS302</b>
1	ENBLINK LIST	All SS302 dongles paired are displayed
2	QUICK INCLUSION	To pair devices quickly in the dash board.
3	NOTICE UPDATE	Notices or software updates are informed.
4	ENBLINK SETTINGS	Configuration such as passcode or nickname can be configured.

## 5. How to control

### 5.1. Paring device (Inclusion)

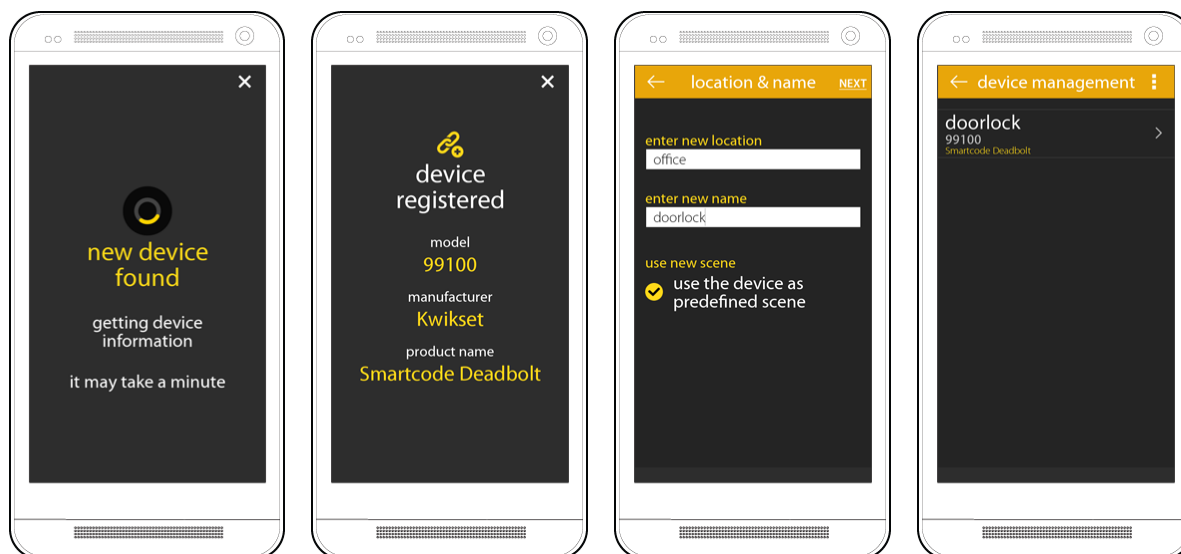


- 1) Touch 'Inclusion' menu on the upper right corner in the 'Device Management' screen. (Or you can touch 'Quick inclusion' of the submenu on the dashboard.)
- 2) Install a target device.



(sample device: refer detail information of 'Kwikset Doorlock' at [\\_manufacture provided\\_](#).)

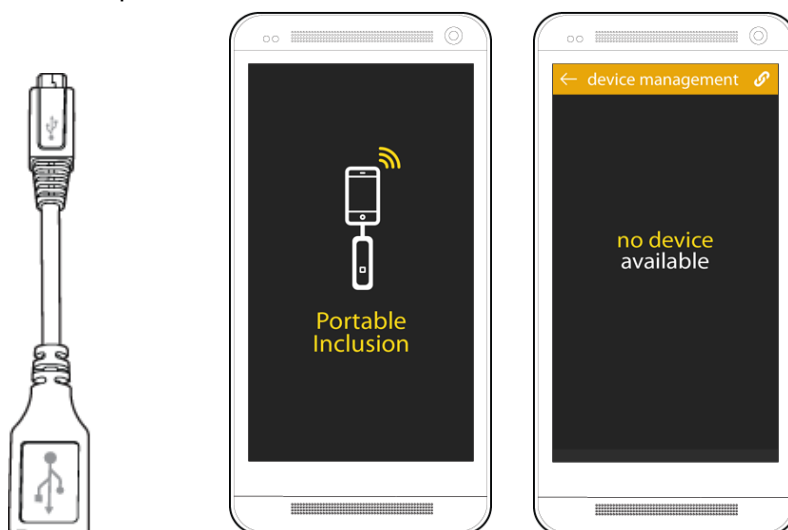
- 3) If inclusion button is pushed at Doorlock, it notifies signal on the remote application in the phone.



4) Location, name and type should be specified.

## 5.2. Portable Inclusion

If devices such as doorlocks or door window sensors are installed far from the Set-top box plugged in Enblink, in some cases, those might not be paired to Enblink properly because wireless can't be reached. In this case, you can plug Enblink out from the Set-top box and then plug in it using USB OTG cable into a phone which the remote application is installed. Now, you can bring the phone to where devices are installed nearby and then pair them.



OTG USB Cable

! Please refer [here](#) to know detail information regarding USB OTG cable.

- 1) Plug Enblink in into the phone using an USB OTG cable.
- 2) Portable Inclusion screen might be popped up.
- 3) You can pair a device like a normal inclusion.
- 4) Once pairing is done, you can plug Enblink out from the phone and then plug in into the Set-top box used before.

### 5.3. Compatible devices



Lighting



Security Sensors



Door Locks



IP Cameras

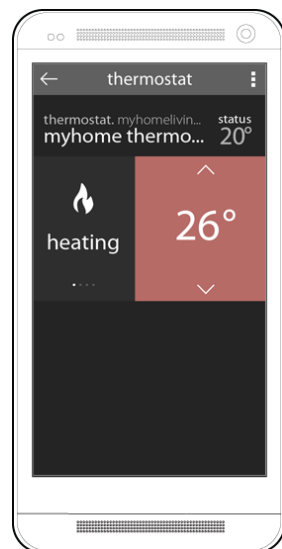
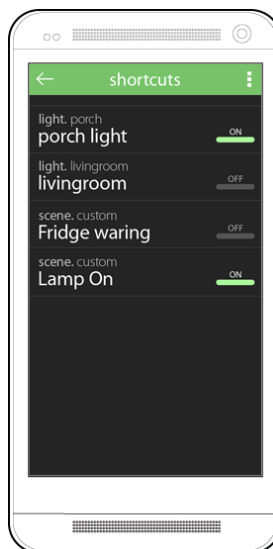
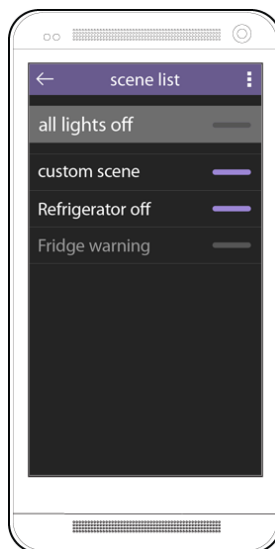
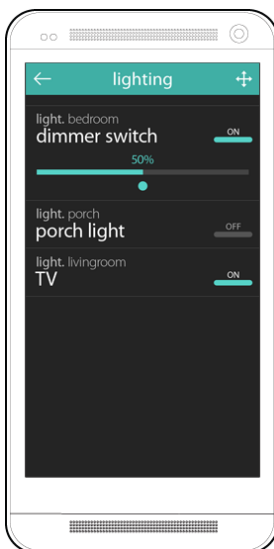
All other Z-wave devices in addition to above devices can be controlled by SS302.

You can control light switches or thermostats in your living room. Complicated installation is not required and just simple pairing is enough to control devices.

! Please refer [here](#) to learn more Z-Wave devices

### 5.4. Control devices

- 1) Monitor and control states of each device accordingly
- 2) A device is added, removed, edited or reset on [Device Management] tile.

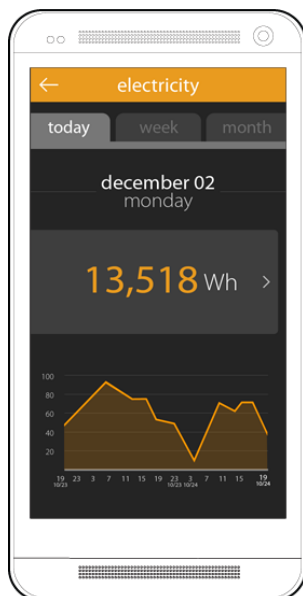


LIGHTING

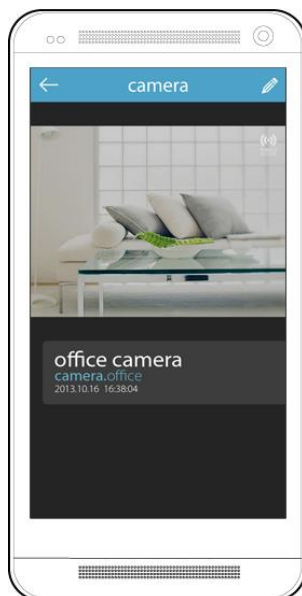
SCENE

SHORTCUTS

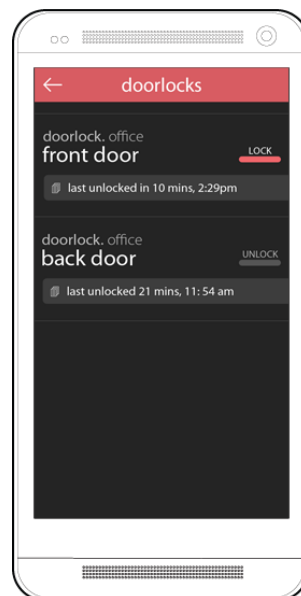
THERMOSTAT



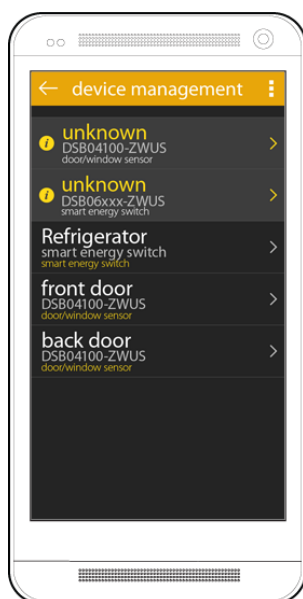
ELECTRICITY



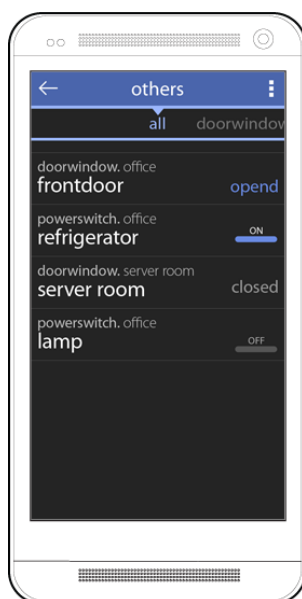
CAMERA



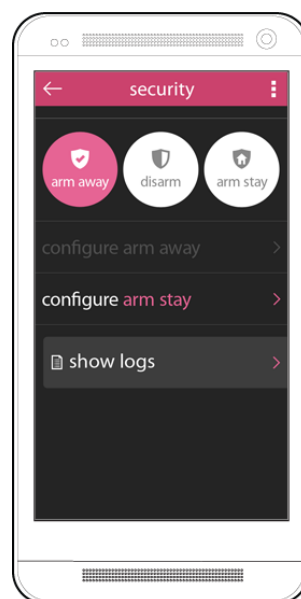
DOORLOCK



DEVICE MANAGEMENT



OTHERS



SECURITY

## 6. Product Information

### 6.1. Product information note

<b>Model</b>	<b>SS302</b>
Purchase date	
Dealer	
Phone no. of dealer	
Serial number	

### 6.2. Customer Support

- E-mail: [cs@enblink.com](mailto:cs@enblink.com)
- homepage: <http://www.enblink.com>

### 6.3. Warranty

If the dongle doesn't work properly, you can contact with the seller or Enblink support center. They will tell you what warranty condition is applied.



**FCC Compliance Statement**

This device complies with part 15 of the FCC rules. Operation is subject to the following two conditions:

- (1) This device may not cause harmful interference, and
- (2) This device must accept any interference received, including interference that may cause undesired operation.

This equipment generates, uses and can radiate radio frequency energy and, if not installed and used in accordance with the instructions, may cause harmful interference to radio communications.

However, there is no guarantee that interference will not occur in a particular installation. If this equipment does cause harmful interference to radio or television reception, which can be determined by turning the equipment on and off, the user is encouraged to try to correct the interference by one or more of the following measures:

- Reorient or relocate the receiving antennae
- Increase the separation between the equipment and the receiver
- Connect the equipment into an outlet on a circuit different from that to which the receiver is connected.
- Consult the dealer or an experienced radio/TV technician for help.

***WARNING:*** This equipment may generate or use radio frequency energy. Changes or modifications to this equipment may cause harmful interference unless the modifications are expressly approved in the instruction manual. The user could lose the authority to operate this equipment if an unauthorized change or modification is made.<sup>42</sup>