

# 01\_HAC RF\_GSM850\_GSM Voice\_Ch128\_E

Measurement performed on April 06, 2024 at 13:14

## Device Under Test

Manufacturer	Model	Dimensions[mm]	Speaker Position [mm]
		146.2 x 71.8 x 7.5	144.3

## Hardware Setup

Probe Name	Probe Calibration Date	DAE Name	DAE Calibration Date
EF3DV3 - SN4050	March 06, 2024	DAE4 Sn1649	April 24, 2023

## Communication Systems

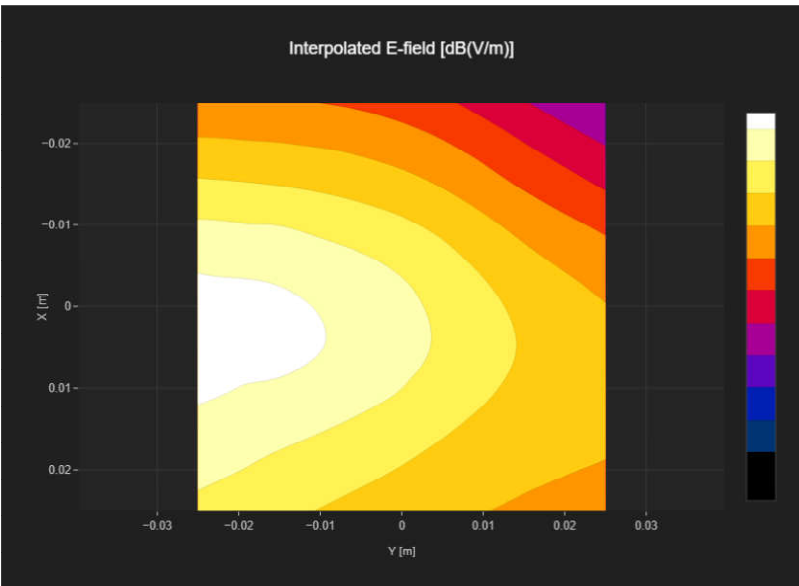
Band Name	Communication Systems Name	Channel	Frequency [MHz]
GSM 850	GSM-FDD (TDMA, GMSK)	128	824.2

## Grid Settings

Extent X [mm]	Extent Y [mm]	Step X [mm]	Step Y [mm]	Distance [mm]
50.0	50.0	10.0	10.0	15.0

## Results

E <sub>max</sub> [dB(V/m)]	E <sub>avg50x50</sub> max [dB(V/m)]	MIF [dB]	RFail [dB(V/m)]
35.7	31.78	3.63	35.41



# 02\_HAC RF\_GSM850\_GSM Voice\_Ch189\_E

Measurement performed on April 06, 2024 at 13:04

## Device Under Test

Manufacturer	Model	Dimensions[mm]	Speaker Position [mm]
		146.2 x 71.8 x 7.5	144.3

## Hardware Setup

Probe Name	Probe Calibration Date	DAE Name	DAE Calibration Date
EF3DV3 - SN4050	March 06, 2024	DAE4 Sn1649	April 24, 2023

## Communication Systems

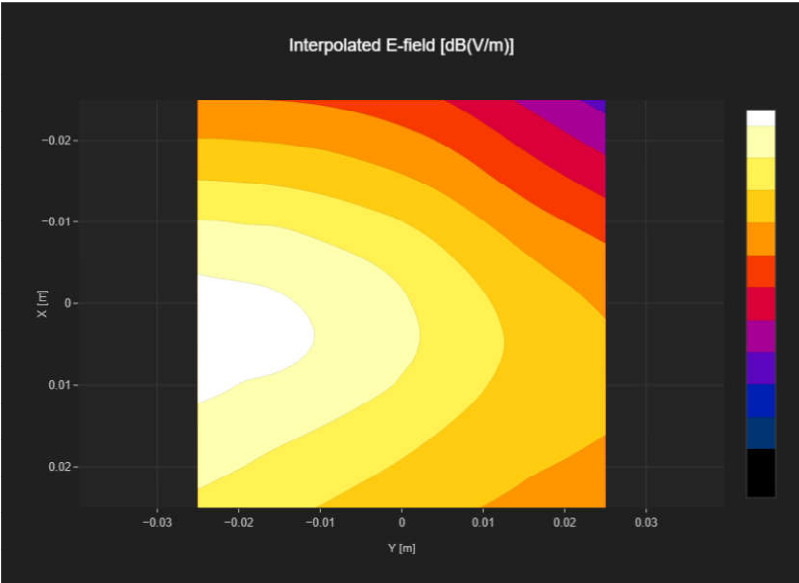
Band Name	Communication Systems Name	Channel	Frequency [MHz]
GSM 850	GSM-FDD (TDMA, GMSK)	189	836.4

## Grid Settings

Extent X [mm]	Extent Y [mm]	Step X [mm]	Step Y [mm]	Distance [mm]
50.0	50.0	10.0	10.0	15.0

## Results

E <sub>max</sub> [dB(V/m)]	E <sub>avg50x50</sub> max [dB(V/m)]	MIF [dB]	RFail [dB(V/m)]
35.04	30.96	3.63	34.59



# 03\_HAC RF\_GSM850\_GSM Voice\_Ch251\_E

Measurement performed on April 06, 2024 at 13:17

## Device Under Test

Manufacturer	Model	Dimensions[mm]	Speaker Position [mm]
		146.2 x 71.8 x 7.5	144.3

## Hardware Setup

Probe Name	Probe Calibration Date	DAE Name	DAE Calibration Date
EF3DV3 - SN4050	March 06, 2024	DAE4 Sn1649	April 24, 2023

## Communication Systems

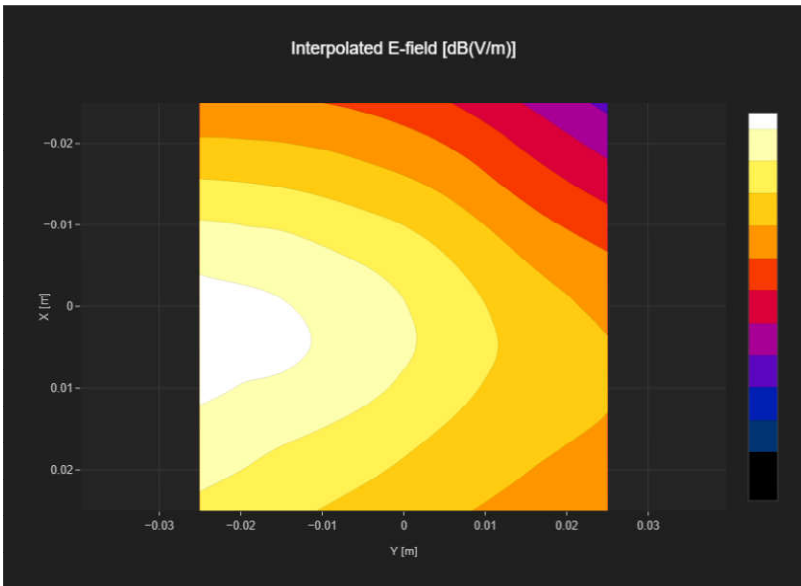
Band Name	Communication Systems Name	Channel	Frequency [MHz]
GSM 850	GSM-FDD (TDMA, GMSK)	251	848.8

## Grid Settings

Extent X [mm]	Extent Y [mm]	Step X [mm]	Step Y [mm]	Distance [mm]
50.0	50.0	10.0	10.0	15.0

## Results

E <sub>max</sub> [dB(V/m)]	E <sub>avg50x50</sub> max [dB(V/m)]	MIF [dB]	RFail [dB(V/m)]
34.4	30.26	3.63	33.89



# 04\_HAC RF\_GSM1900\_GSM Voice\_Ch512\_E

Measurement performed on April 06, 2024 at 13:35

## Device Under Test

Manufacturer	Model	Dimensions[mm]	Speaker Position [mm]
		146.2 x 71.8 x 7.5	144.3

## Hardware Setup

Probe Name	Probe Calibration Date	DAE Name	DAE Calibration Date
EF3DV3 - SN4050	March 06, 2024	DAE4 Sn1649	April 24, 2023

## Communication Systems

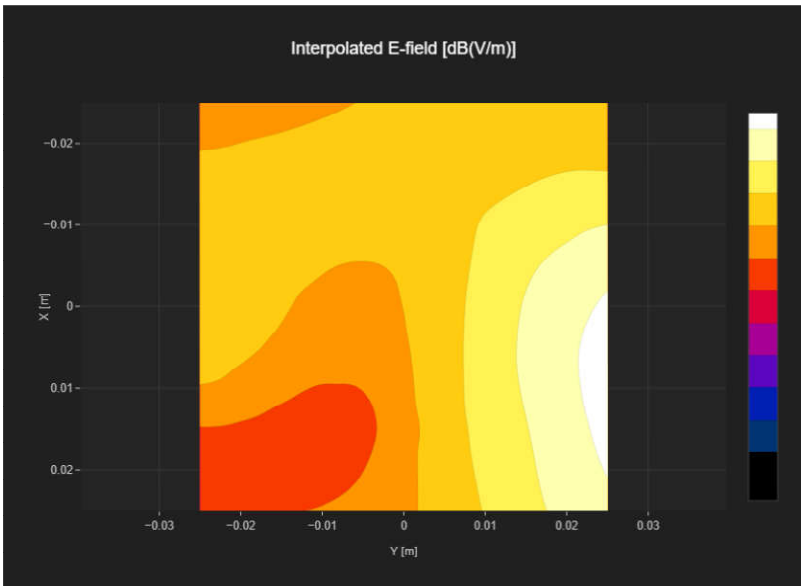
Band Name	Communication Systems Name	Channel	Frequency [MHz]
PCS 1900	GSM-FDD (TDMA, GMSK)	512	1850.2

## Grid Settings

Extent X [mm]	Extent Y [mm]	Step X [mm]	Step Y [mm]	Distance [mm]
50.0	50.0	10.0	10.0	15.0

## Results

E <sub>max</sub> [dB(V/m)]	E <sub>avg50x50</sub> max [dB(V/m)]	MIF [dB]	RFail [dB(V/m)]
19.23	14.45	3.63	18.08



# 05\_HAC RF\_GSM1900\_GSM Voice\_Ch661\_E

Measurement performed on April 06, 2024 at 13:29

## Device Under Test

Manufacturer	Model	Dimensions[mm]	Speaker Position [mm]
		146.2 x 71.8 x 7.5	144.3

## Hardware Setup

Probe Name	Probe Calibration Date	DAE Name	DAE Calibration Date
EF3DV3 - SN4050	March 06, 2024	DAE4 Sn1649	April 24, 2023

## Communication Systems

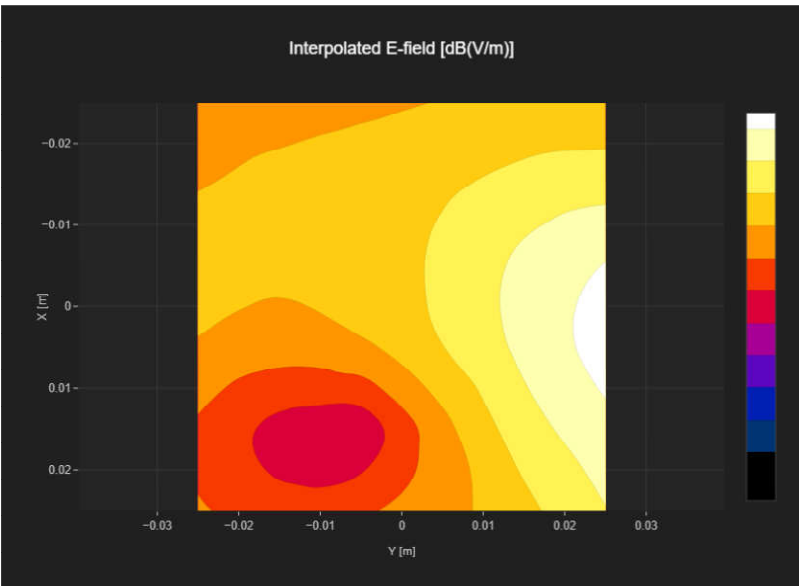
Band Name	Communication Systems Name	Channel	Frequency [MHz]
PCS 1900	GSM-FDD (TDMA, GMSK)	661	1880.0

## Grid Settings

Extent X [mm]	Extent Y [mm]	Step X [mm]	Step Y [mm]	Distance [mm]
50.0	50.0	10.0	10.0	15.0

## Results

E <sub>max</sub> [dB(V/m)]	E <sub>avg50x50</sub> max [dB(V/m)]	MIF [dB]	RFail [dB(V/m)]
21.13	16.17	3.63	19.8



# 06\_HAC RF\_GSM1900\_GSM Voice\_Ch810\_E

Measurement performed on April 06, 2024 at 13:44

## Device Under Test

Manufacturer	Model	Dimensions[mm]	Speaker Position [mm]
		146.2 x 71.8 x 7.5	144.3

## Hardware Setup

Probe Name	Probe Calibration Date	DAE Name	DAE Calibration Date
EF3DV3 - SN4050	March 06, 2024	DAE4 Sn1649	April 24, 2023

## Communication Systems

Band Name	Communication Systems Name	Channel	Frequency [MHz]
PCS 1900	GSM-FDD (TDMA, GMSK)	810	1909.8

## Grid Settings

Extent X [mm]	Extent Y [mm]	Step X [mm]	Step Y [mm]	Distance [mm]
50.0	50.0	10.0	10.0	15.0

## Results

E <sub>max</sub> [dB(V/m)]	E <sub>avg50x50</sub> max [dB(V/m)]	MIF [dB]	RFail [dB(V/m)]
19.65	16.57	3.63	20.2

