

Table of Contents

1 User Information..... 2

    1.1 Caution.....2

2 Product Introduction..... 3

    2.1 Product Overview.....3

    2.2 Package Contents..... 4

    2.3 Connection..... 4

    2.4 First Time Usage..... 6

    2.5 Remote Control..... 7

3 Main Functions..... 8

    3.1 .....Setup Menu

        8

    3.2 Movie Library..... 14

    3.3 Photo Library..... 16

    3.4 Music Library..... 18

    3.5 File Manager..... 20

    3.5 File Manager..... 23

    3.6 Playlist management.....27

    3.7 Copy Function..... 28

4 Upgrading the Firmware.....29

5 Appendixes..... 30

    5.1 Specifications..... 30

5.2 Frequently Asked Questions.....	31
6 Copyrights and Trademarks.....	32
7 Warranty.....	32
8 GPL Statement.....	32

# 1 User Information

## 1.1 Caution

This player's design and manufacture has your safety in mind. In order to safely and effectively use this player, please read the following before usage.

### 1.1.1 Usage cautions

User should not modify this player. If commercial hard disk is being used, the environmental temperature should be within +5°C ~ +35°C.

### 1.1.2 Power

The player's power voltage: DC 5.3V,2A

When using this player, please connect the supplied AC adapter or AC adapter cable to the player's power jack. When placing the adapter cable, make sure it can not get damaged or be subject to pressure. To reduce the risk of electric shock, unplug the adapter first before cleaning it. Never connect the adapter to the player in a humid or dusty area. Do not replace the adapter or cable's wire or connector.

### 1.1.3 Radio interference/compatibility

- If not properly shielded, almost all electronic devices will get radio interference. Under some

conditions, your player might get interference.

- The design of this player has followed the CE standard, and has followed the following rules:

(1) This player may not cause harmful interference;

(2) This player could accept some interference received including interference that may cause undesired operation.

#### **1.1.4 Repair**

If the player has a problem, you should take it to an appointed repair center and let the specialists do the repair, never repair the player yourself, you might damage the player or endanger yourself or your data.

#### **1.1.5 Disposing of the player**

When you dispose of the player, be sure to dispose it appropriately. Some countries may regulate disposal of electrical device, please consult with your local authority.

#### **1.1.6 Others**

When using this player, please do not let the player come into contact with water or other liquid, if water is accidentally spilled on the player, please use a dry cloth to absorb the spillage.

Electronic products are vulnerable, when using please avoid shaking or hitting the player, and do not press the buttons too hard.

- ✧ Do not let the player come into contact with water or other liquid.
- ✧ Do not disassemble the player, repair the player or change the design of the player, any damage done will not be included in the repair policy.
- ✧ Do not press the buttons of the player too hard.
- ✧ Avoid hitting the player with hard object, avoid shaking the player, and stay away from magnetic fields.

During electrostatic discharge and the strong electromagnetic field, the product will malfunction, then unplug the power cable and the product will return to normal performance next time it is powered on.

## **2 Product Introduction**

### **2.1 Product Overview**

Thank you very much for purchasing this product. In the digital era, this product is a great home entertainment partner. With the outstanding design, you can enjoy Full HD movies and music, view photos of precious moments. This player has the following functionality.

#### **Network Feature**

- Ethernet(10M/100M/)
- Wi-Fi Antenna (802.11b/g/n, optional)
- UPNP server

- Miracast

### **Media Library**

- A powerful search engine, allows you to browse multimedia files in most easy ways

### **Movie Playback**

- Fast forward/rewind
- View subtitle
- Supports major audio formats (1080p HD video decoding)
- Subtitle control: color/offset/size
- Movie format: AVI/MKV/TS/TP/TRP/M2TS/MPG/MP4/M4V/MOV/VOB/ISO/IFO/DAT/WMV/ASF/RM/RMVB/FLV

### **Music Playback**

- Fast forward/rewind
- Shuffle
- Repeat
- Music format: MP3/OGG/WMA/WAV/FLAC/APE

### **Photo Viewing**

- You can view photos in slide show mode with back ground music
- Zoom in/out, Rotate
- Photo format: HD JPEG/BMP/GIF/TIF/PNG

### **USB2.0 Support**

- USB 2.0 HOST port (for USB storage devices)

### **Card reader**

- SD/MMC

### **File Copy**

- Supports copying & moving files among USB and HDD.

**Note:** All the information contained in this manual was correct at the time of publication. However, as our engineers are always updating and improving the product, your device's software may have a slightly different appearance or modified functionality than presented in

this manual.

## 2.2 Package Contents

Part	Quantity
Player	1
AV cable	1
Remote Control	1
Remote Control Battery	2
AC/DC adaptor	1
User manual	1

**Note:**

The actual contents in the package might be different from the packing list in this manual.

## 2.3 Connection

### 2.3.1 Power connection

- (1) connect the AC adaptor to the player's DC IN jack;
- (2) plug in the AC adaptor to the power outlet.

### 2.3.2 USB Mass Storage Device (like USB stick, USB HDD etc.) Connection

- (1) Make sure the player is powered on;
- (2) Plug in the USB stick or USB HDD etc. to one of the USB host ports of this player.

### 2.3.3 Connecting a Memory Card

Memory card can be used by inserting to the card slot

- (1) insert the memory card to the card slot properly
- (2) Insert the card by following the arrow pointer in the picture.

### 2.3.4 TV connection

#### 2.3.4.1 A/V OUT

- (1) plug in the 3 in 1 black AV connector to the player's A/V OUT jack;
- (2) plug in the 3 color connector to the TV's A/V IN jack.

In this way, you can enjoy the content in the player on TV or other display devices.

#### 2.3.4.3 Y/Pb/Pr Component OUT ((Only Apply for the model with Y/Pb/Pr )

- (1) plug in the connector of the YUV cable to the player's Y/Pb/Pr jack;
- (2) plug in the 3 color connector to the TV's Y/Pb/Pr jack.

Audio Connection while using Y/Pb/Pr Video out:

First method: use the audio output from the A/V OUT jack;

Second method: use the audio output from the S/PDIF Coaxial or Optical jack.  
In this way, you can also enjoy videos, music, and photos in the player on TV.

#### **2.3.4.4 HDMI OUT**

- (1) plug one connector on your HDMI cable to the player's HDMI jack;
  - (2) plug the other connector on your HDMI cable to the TV's HDMI jack.
- In this way, you can have the highest quality video and audio via a single cable.

#### **2.3.5 Digital Audio Device connection**

- (1) plug in the RCA connector on your coaxial cable to the player's Coaxial jack. Or if you use optical fiber, please plug in the Toslink connector on your optical fiber to the player's S/PDIF Optical jack; (not supplied)
- (2) plug in the other connector on your coaxial cable or optical fiber to the digital audio device. (not supplied)

#### **2.3.6 Connecting to a LAN (Only Apply for the network model )**

To connect to a LAN (Local Area Network) you require a cat5, cat5e or cat6 network cable (not supplied).

- (1) Connect one of the crystal plugs on the cable to the player's RJ45 LAN socket;
- (2) Connect the other crystal plug on the cable to a RJ45 LAN port on your router, switch, or hub devices.

#### **2.3.7 Connecting to a WLAN**

- (1) Make sure the player is powered on;

**Note:** (Please refer to '**3.1.4 Changing Network Settings**' for more details about wireless setup)

### **2.4 First Time Usage**

#### **2.4.1 Power On / Off**

##### **Power On**

After connecting the DC IN jack and press the power button on the remote control, the player will soon enter the home screen, and the power indicator will turn blue.

##### **Power Off**

Press the power button on the remote control, the player will soon power off, and the power indicator will turn off ,Then unplug the power cord to cut off the power supply.

#### **2.4.2 Menu language**

The system language of this player can be set to English or other languages. Change the language you wish in the setup menu, the selected language will take effect immediately.

Initial Setup

Menu Language

Time

Wired Lan Setup



## 2.5 Remote Control



No.	Button	Function
1	<b>Power</b>	Press to enter wake up or turn off the player
2	<b>Mute</b>	Press to mute audio output, and press again to resume.
3	<b>Red</b>	Function is available in virtual keyboard.
4	<b>Green</b>	Function is available in virtual keyboard.
5	<b>Miracast</b>	Enter miracast function
6	<b>Menu</b>	Press to enable the option menu, where you can change the review mode of file manager and media library;



		Press to display or hide the option menu during playback.
7	<b>TV SYS.</b>	Press to switch between NTSC, PAL, 480P, 576P, 720P, 1080I, and 1080P.
8	<b>Zoom</b>	Press to zoom the image (photo or video).
9	<b>Setup</b>	Press to enter the setup menu.
10	<b>Eject</b>	Press to safely remove the USB device.
11	<b>Home</b>	Press to enter the home screen.
12	<b>Back</b>	Press to return to the previous screen while navigating menus.
13	<b>Navigational buttons</b>	Press the arrow buttons to select menu options, and the <b>OK</b> button to confirm.
14	<b>OK</b>	Press <b>OK</b> button to confirm.
15	<b>VOL-</b>	Press to decrease the volume.
16	<b>VOL+</b>	Press to increase the volume.
17	<b>Prev</b>	Press to view the previous file / page up.
18	<b>Play/ Pause</b>	Press to begin/pause playback.
19	<b>Next</b>	Press to view the next file / page down.
20	<b>Slow</b>	Press to play back in slow motion. Press the <b>PLAY</b> button to resume regular playback.
21	<b>Info</b>	Press to display current status. Press during playback, an onscreen display appears showing track number and time elapsed/remaining.
22	<b>Stop</b>	Press to stop playback.
23	<b>FR</b>	Press to fast rewind the current playback. Press repeatedly to select speeds
24	<b>Repeat</b>	Press to set repeat option.
25	<b>FF</b>	Press to fast forward the current playback. Press repeatedly to select speeds.
26	<b>Subtitle</b>	Press to set subtitle options. You can change the color/size/offset/text encoding of subtitle.
27	<b>Audio</b>	Press to select an audio track.
28	<b>Goto</b>	Press to jump to a specific point on a title. Specify the point using Title, Chapter and Time.

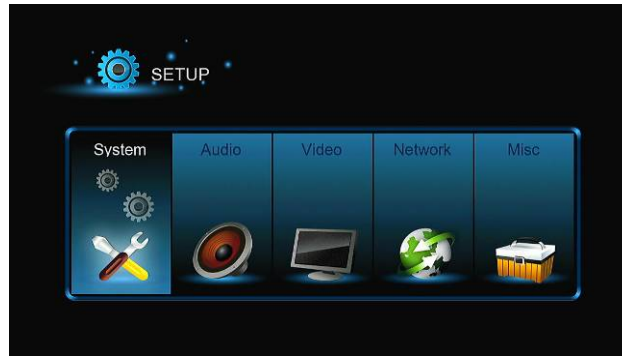
## 3 Main Functions

### 3.1 Setup Menu

The Setup menu allows you to personalize and configure the preferences for your player.

To select a Setup option:

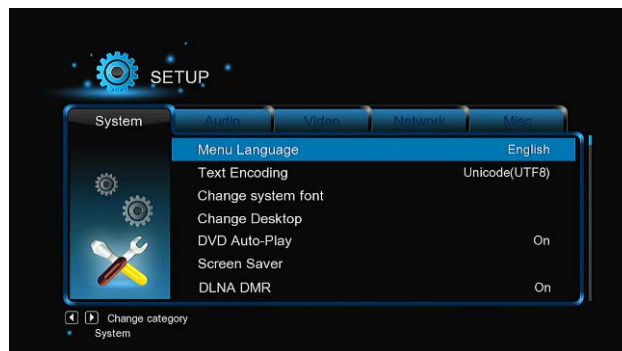
- Select the Setup icon on the home screen, or press **Setup** button on the remote control.
- Use the **Left/Right** navigational buttons to select an option, and then press **OK**.



There are five setup options, including **System**, **Audio**, **Video**, **Network** and **MISC**. Use the **Left/Right** navigational buttons to select a menu. Press **OK** to confirm. Press **Back** to cancel and display the previous menu screen.

### 3.1.1 Changing System Settings

Use this menu to configure system settings.



#### Menu Language

- Select to choose the OSD (On-Screen Display) language.

#### Text Encoding

- Select to set the text encoding option (subtitle display)

#### Time

Select to change time zone.

#### Daylight Saving

Select to choose on/off daylight.

#### Screen Saver

- Options  
Select to change screen saver.

#### Soft keyboard Language

- Select to change the language of the mini keyboard.

### Resume Playback

- Select to turn on / off resume playback (auto-bookmarking) feature for movies.

### Format storage

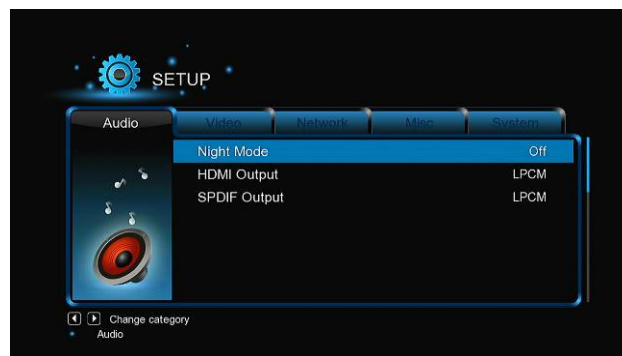
- Select to format your HDD.

### Auto standby in 3hrs

- Select to set the standby

## 3.1.2 Changing Audio Settings

Use this menu to configure audio settings



### Night Mode

- Choose among **Off / On / Comfort**. If the option is turned on, the audio output volume will be decreased to make you more comfortable.

### HDMI Output

- Choose among HDMI LPCM, HDMI RAW and HDMI AUTO.

### SPDIF Output

- Choose among **LPCM, RAW**.

### Surround Sound

- Choose among **Auto,5.1CH,HD Audio**

### Lip Sync (HDMI A/V Sync)

- Choose among **Lip Sync(Auto),Lip Sync (Manual),off**

**Note:** In raw mode, Dolby TrueHD, Dolby Digital Plus , Dolby Digital, DTS sound can be by passed to the HDMI TV or Digital amplifier.

Due to the bandwidth requirement, Dolby TrueHD and Dolby Digital Plus sound only can be by passed though HDMI cable, also the TV system must up to 720p or above.

## 3.1.3 Changing Video Settings

Use this menu to configure video settings.



### **Aspect Ratio**

- **Pan Scan 4:3:** Display a wide picture on the entire screen and cuts off the redundant portions. Select when a standard 4:3 TV is connected.
- **Letter Box 4:3:** Display a wide picture with two black borders on the top and bottom of 4:3 screen. Select when a standard 4:3 TV is connected.
- **16:9:** Compress the image to convert the whole image. Select when a 16:9 TV is connected.
- **16:10:** Select when a 16:10 TV is connected.

### **TV SYSTEM**

- Select to adjust TV Type and video output resolution. This setting depends on your tv and region location.

### **Scale Video output to 90%**

- Select to setting on/off Scale video function.

### **Resolution-video output resolution**

- Select to adjust TV Type and video output resolution. This setting depends on your tv and region location.

You could choose the below - video output resolution

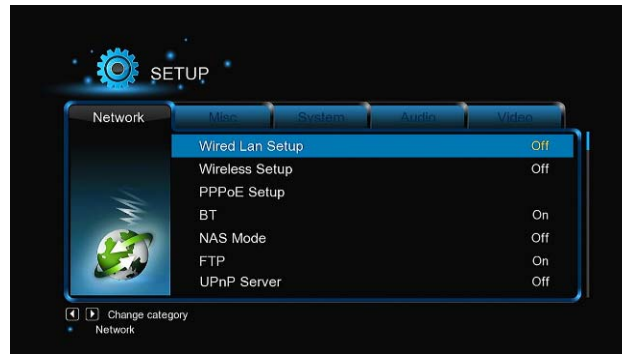
HDMI Auto, 480P, 576P, 720P, 60Hz, 1080i 50Hz, 1080i 60Hz, 1080P 50Hz, 1080P 60Hz

### **1080P 24Hz**

- Select to setting on/off Scale video function.
- 

### **3.1.4 Change Network Settings**

Use this menu to configure your Wireless Local Area Network.



### Wired Lan Setup

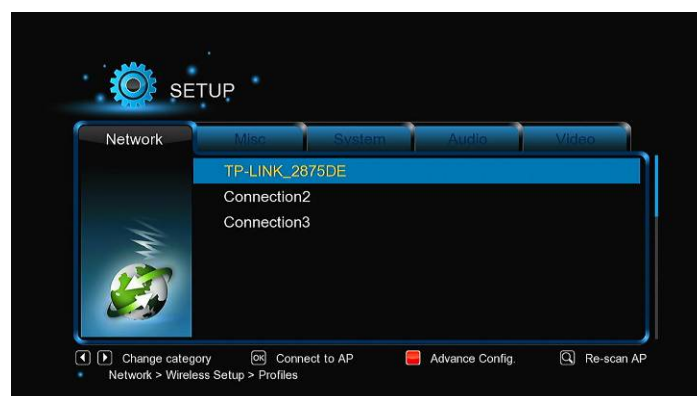
- **DHCP IP (AUTO)**

Select to obtain IP address automatically.

- **FIX IP (MANUAL)**

Select to manually input the IP Address, Subnet Mask, Default Gateway, and DNS Server IP Address.

### Wireless Setup



### **Step 1, Scanning AP (Access Point) in your network**

Follow the prompting message on the screen and press the **Zoom** button to select **Infrastructure (AP)** mode and update the access points list, and all SSID will be displayed on the screen.



## Step 2, Input WEP / WPA key.

Press **OK** to input encryption keys via the virtual keyboard. Press the navigational buttons to select, **OK** to input, **FF** to move cursor left, **FR** to move cursor right, **Zoom** to switch between uppercase and lowercase, **Stop** to delete a character, **Red** to make more symbols available, **Green** to change the language of the virtual keyboard, **OK** to confirm and to start testing the connection.



The testing process will take for a while, please be patient to wait. If the test is ok, the network information (Profile Name, IP address, Subnet Mask, Gateway, etc.) will be displayed on the screen.

## PPPOE Setup

- Input the ADSL account and password in this menu, system will obtain IP address automatically from the server based on PPPOE protocol. Following the message on the screen to use this function.

## Device Name

- Select to key in your desired host name to be seen in your network.

## 3.1.5 Miscellaneous

Use this menu to adjust miscellaneous settings.



## Version Info

- This tab shows you information about the software installed and about the material components of your player.

### Network Info

- This tab shows you information about your network, MAC Address, IP address Gateway, Subnet.

### USB Upgrade

- Select to update the firmware via a USB stick.
  - 1) Copy 'install.img' or extension files to the root directory of a USB stick, and connect it to the USB HOST port of the player.
  - 2) Press **OK** to confirm.

### Key Tone Volume

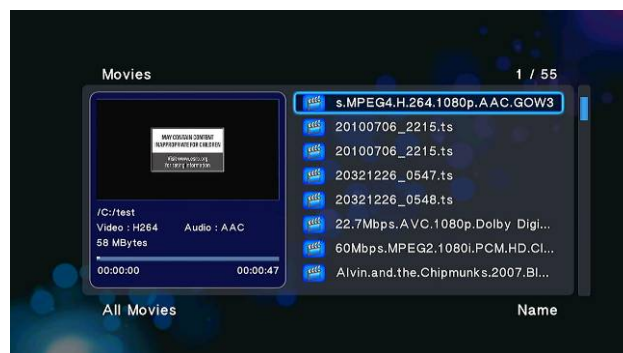
- Select to set the Key Tone Volume on/off

### Factory Default

- Select to restore factory defaults.

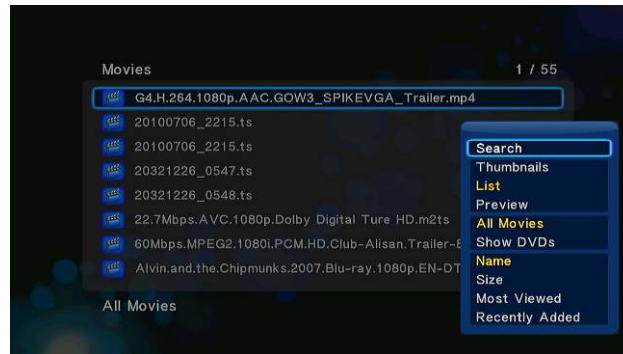
## 3.2 Movie Library

Enter into video icon, only supported files will be displayed.



### 3.2.1 Movie Library Options

In movie library, press **MENU** button to display the option menu, you can get following functions through the option menu.



### Search

- Choose the **Search** option in the option menu, you can search for a media file by filter media library to locate the specific media file.

### Review Mode

- Choose a review mode among **Thumbnails**, **List**, **Preview** from option menu.

### Sorting Mode

- Choose to sorting by **Name**, **Size**, **Most Viewed** or **Recently Added** from option menu.

### Show DVDs

- Choose to display DVD IFO,BD MV and ISO files directly in media library.

### Flash Animation

- Choose to display .swf files in media library.

### Go to Folder

- Choose to locate the file in file manager.

## 3.2.2 Movie Playback Control

You can access the following functions during playback.

Button	Function
<b>Play/Pause</b>	Pause or resume the current playback.
<b>Prev/Next</b>	View the previous or next file/chapter.
<b>FR/FF</b>	Fast rewind or fast forward. Press repeatedly to select the speed.
<b>Slow</b>	Play back in slow motion.
<b>Goto</b>	Jump to a specific point on a title. Specify the point using Title,



	Chapter and Time.
<b>Menu</b>	Display or hide the option menu during playback.
<b>Stop</b>	Stop playback.
<b>VOL+/-</b>	Increase/decrease the volume.
<b>Audio</b>	Select an audio track.
<b>Subtitle</b>	Select a subtitle and change the color/size/offset/text encoding of subtitle.
<b>Repeat</b>	Set the repeat option.
<b>Zoom</b>	Zoom in the image.
<b>Info</b>	View the media information.

### 3.2.3 Movie Playback Options

During movie playback, press **Menu** button to display or hide the option menu at the bottom of the screen.



Except select audio track, subtitle, repeat mode, you also can get following functions though the Option menu during video playback.

#### DVD Menu

- Select to return to the navigation menu during DVD IFO or ISO playback.
- Title menu, return to the main menu of entire disc during DVD playback.
- Root menu, return to the root main of each title during DVD playback.

#### GOTO

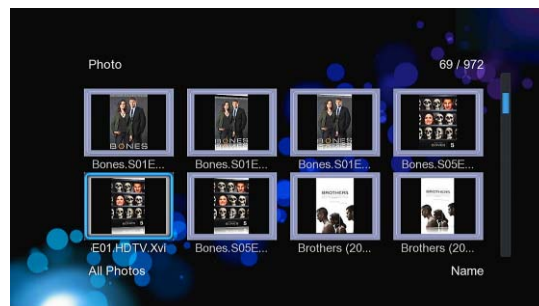
- Select to jump to a specific point on a title. Specify the point using Title, Chapter and Time.

#### Video Setting

- Select to adjust the value of **Brightness, Contrast, Saturation and Hue**.

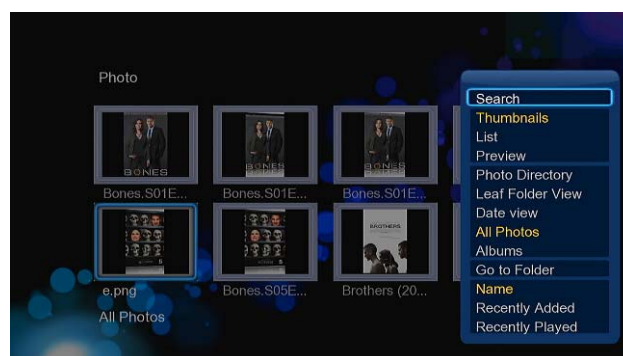
## 3.3 Photo Library

Enter into photo interface, only supported image files will be displayed. This player supports JPG/JPEG/BMP/files.



### 3.3.1 Photo Library Options

In photo library, press **Menu** button to display the option menu, you can get following functions though the option menu.



#### Quick-Search

- Choose the **Search** option in the option menu, you can search for a photo by filter photo library to locate the specific photo.

#### Review Mode

- Choose a review mode among **Thumbnails**, **List**, **Preview** from option menu.

#### Sorting Mode

- Choose to sorting by **Name**, **Recently Added** or **Recently Played** from option menu.

#### Folder Directory

- Choose to show all folders.

### Leaf Folder View

- Choose to show all folders that included photo.

### Date View

- Choose to view photo by date.

## 3.3.2 Photo Playback Control

You can access the following functions during photo playback.

Button	Function
<b>Prev / Next</b>	View the previous or next photo.
<b>Up / Down</b>	Rotate a photo in any angle.
<b>Menu</b>	Display or hide the option menu during playback.
<b>Stop</b>	Stop playback.
<b>Zoom</b>	Zoom in the image.

## 3.3.3 Photo Playback Options

During photo playback, press **Menu** button to display or hide the option menu at the bottom of the screen. You can get following functions though the Option menu during photo playback.



### Slideshow Control

- Select to choose the **Interval** and **Transition effect** of the slideshow.

### Repeat Mode

- Choose a repeat mode among **Repeat off**, **Repeat all** and **Shuffle Loop** from option menu.

### Select Music

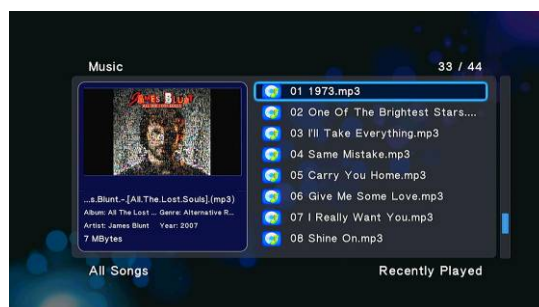
- Select to turn on/off background music during slideshow playback.
- Select a special music as the background music during photo playback.

### Video Setting

- Select to adjust the value of **Brightness, Contrast, Saturation and Hue**.

## 3.4 Music Library

Enter music interface, only supported audio files will be displayed. This player supports MP3, WMA, and OGG audio files.



### 3.4.1 Music Library Options

In music library, press **Menu** button to display the option menu, you can get following functions though the option menu.



### Quick-Search

- Choose the **Search** option in the option menu, you can search for a photo by filter music library to locate the specific music.

### Review Mode

- Choose a review mode among **Thumbnails, List, Preview** from option menu.

### Filter options

- Choose **Albums** to search for music files by album.
- Choose **Artists** to search for music files by artist.
- Choose **Genres** to search for music files by genre.
- Choose **Years** to search for music files by modified year.

### Sorting Mode

- Choose to sorting by **Name**, **Recently Added** or **Recently Played** from option menu.

## 3.4.2 Music Playback Control

You can access the following functions during music playback.

Button	Function
<b>Play/Pause</b>	Begin/Pause playback.
<b>FR / FF</b>	Fast rewind or fast forward. Press repeatedly to select the speed.
<b>Prev / Next</b>	View the previous or next movie.
<b>Menu</b>	Display or hide the option menu during playback.
<b>VOL+/-</b>	Increase/Decrease the volume.
<b>Repeat</b>	Set the repeat option.
<b>Shuffle</b>	Select the shuffle mode.

## 3.4.3 Music Playback Options

During music playback, press **Menu** button to display or hide the option menu at the bottom of the screen. You can get following functions though the Option menu during music playback.



### Repeat Mode

- Choose a repeat mode among **Repeat off**, **Repeat one**, **Repeat all** and **Shuffle Loop** from option menu.

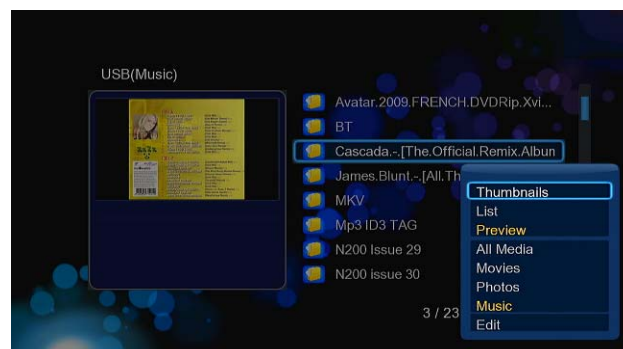
## 3.5 File Manager

The file manager allows you to browse and play music, photo and movie files stored on an internal HDD, external USB device, memory card and network.



### 3.5.1 File Manager Options

In file manager, press **Menu** button to display the option menu, you can get following functions though the option menu.



### Review Mode

- Choose a review mode among **Thumbnails**, **List**, **Preview** from option menu.

### Filter options

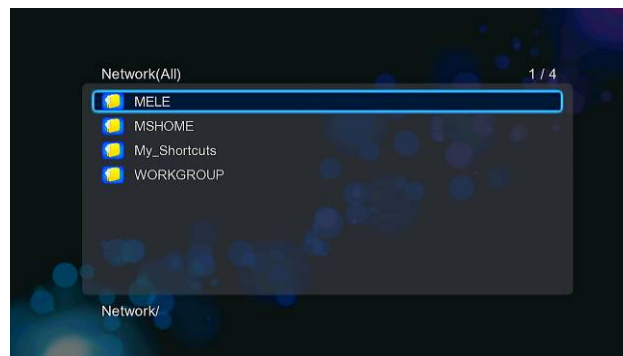
- Choose **Movies** to display all the the supported video files in current directory.
- Choose **Photos** to display all the supported image files in the current directory.
- Choose **Music** to display all the supported audio files in the current directory.

### 3.5.2 A/V Streaming via Network



You can stream your media files shared on the home network. Please refer to '**3.1.4 Changing Network Settings**' for more details on network settings.

There are two ways to locate media files shared on your local network in the **Network** menu. One is to browse through workgroup; the other way is to browse through '**My\_Shortcuts**'.



#### 3.5.2.1 Browsing through workgroup

You can choose the workgroup which your PC belongs to from the workgroup list, find your PC name, and press the **OK** button to confirm. Then you can select and play the shared media files that you want to browse.

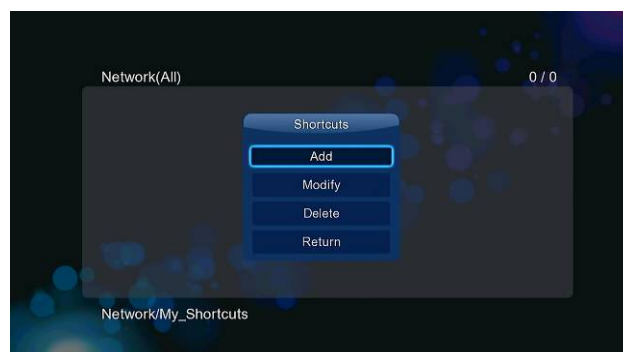
**Note:**

- Due to different network conditions, sometimes the workgroup might not be accessed or shown in the list. And then you need to use '**My\_Shortcuts**' to browse shared files.

#### 3.5.2.2 Browsing through 'My\_Shortcuts'

You can also set '**Specific File Server IP**' and access it from '**My\_Shortcuts**' in the menu.

- Press the **Red** button and a popup menu appears.



- Select **Add** to open a popup menu where you can input **Label**, **Net User ID**, **Net Password**, **Domain**, **Host Name**, and **Specific File Server IP**. Select **OK** to confirm, **Cancel** to cancel, and **Simple / Detail** to switch between simple and advanced options.



- Select the shortcut you added and press the **OK** button to confirm. Then you can select and play the shared media files on the destination computer.



## 3.5 File Manager

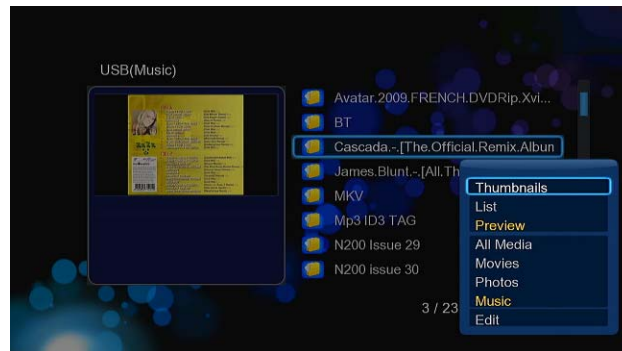
The file manager allows you to browse and play music, photo and movie files stored on external USB device, memory card and network.



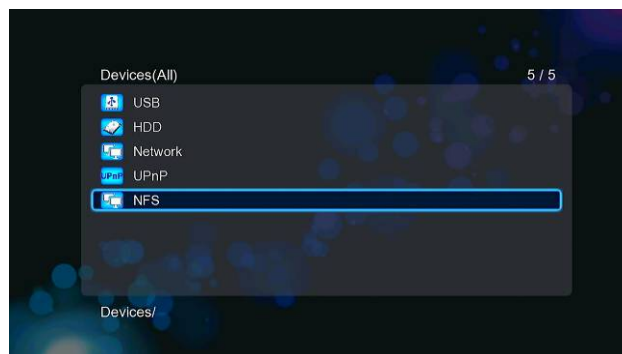
### 3.5.1 File Manager Options

In file manager, press **Menu** button to display the option menu, you can get following functions though the option menu.





### 3.5.2 A/V Streaming via Network



You can stream your media files shared on the home network. Please refer to '**3.1.4 Changing Network Settings**' for more details on network settings.

There are two ways to locate media files shared on your local network in the **Network** menu. One is to browse through workgroup; the other way is to browse through '**My\_Shortcuts**'.



#### 3.5.2.1 Browsing though workgroup

You can choose the workgroup which your PC belongs to from the workgroup list, find your PC name, and press the **OK** button to confirm. Then you can select and play the shared media files that you want to browse.

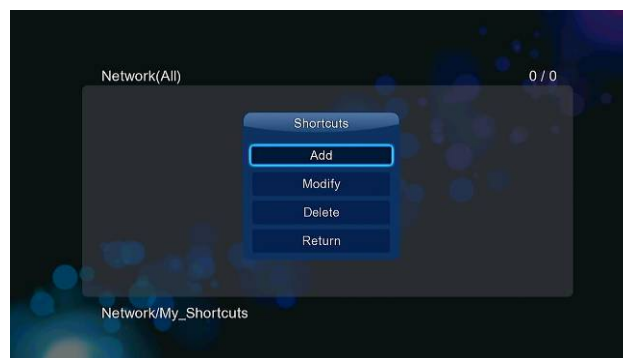
**Note:**

- Due to different network conditions, sometimes the workgroup might not be accessed or shown in the list. And then you need to use '**My\_Shortcuts**' to browse shared files.

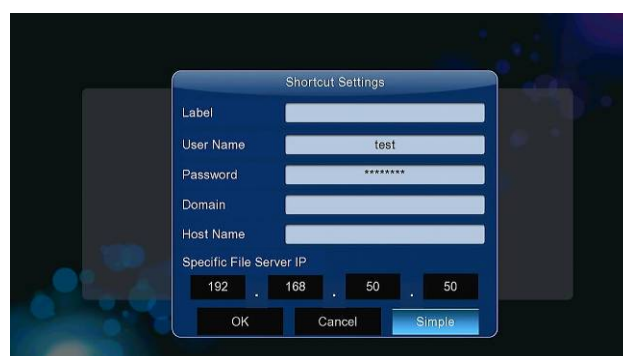
#### 3.5.2.2 Browsing though 'My\_Shortcuts'

You can also set '**Specific File Server IP**' and access it from '**My\_Shortcuts**' in the menu.

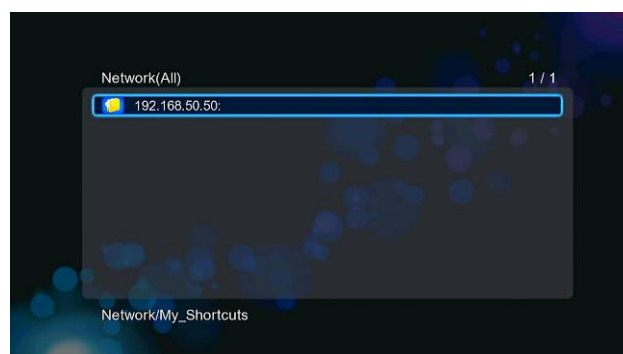
- Press the **Red** button and a popup menu appears.



- Select **Add** to open a popup menu where you can input **Label**, **Net User ID**, **Net Password**, **Domain**, **Host Name**, and **Specific File Server IP**. Select **OK** to confirm, **Cancel** to cancel, and **Simple / Detail** to switch between simple and advanced options.



- Select the shortcut you added and press the **OK** button to confirm. Then you can select and play the shared media files on the destination computer.



### 3.5.3 A/V Streaming via UPnP-server

A built-in UPnP (Universal Plug and Play) client has been integrated on the system, which enables the player to auto-detect UPnP Media Servers on the network to browse and stream media files from them.

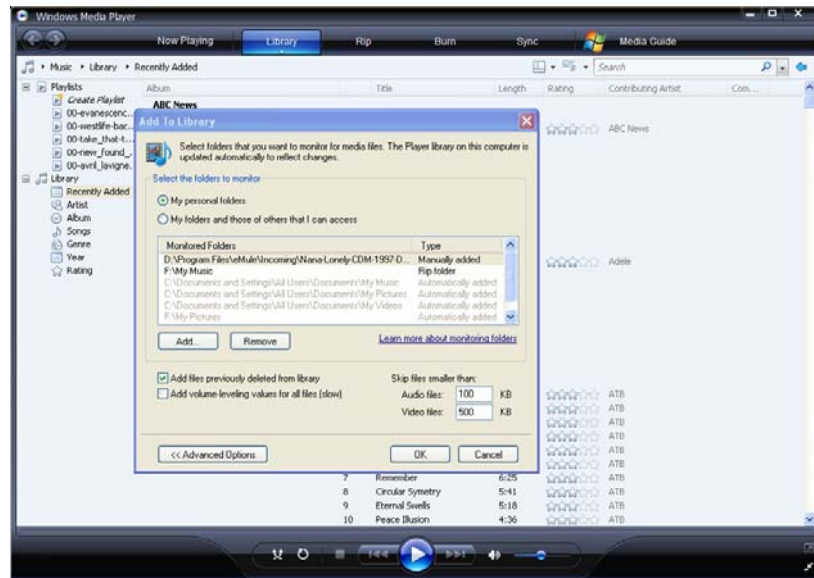
#### 3.5.3.1 Installing UPnP Media Server on your PC

There're a lot of free and commercial UPnP Media Server software, such as Windows Media Connect, Windows Media Player 11, XBMC Media Center (Linux/Mac/Windows), MediaTomb (Linux), etc. Please install one of them on you computer. In the following chapters, we will take Windows Media Player 11 on Microsoft Windows XP SP2 for an example.

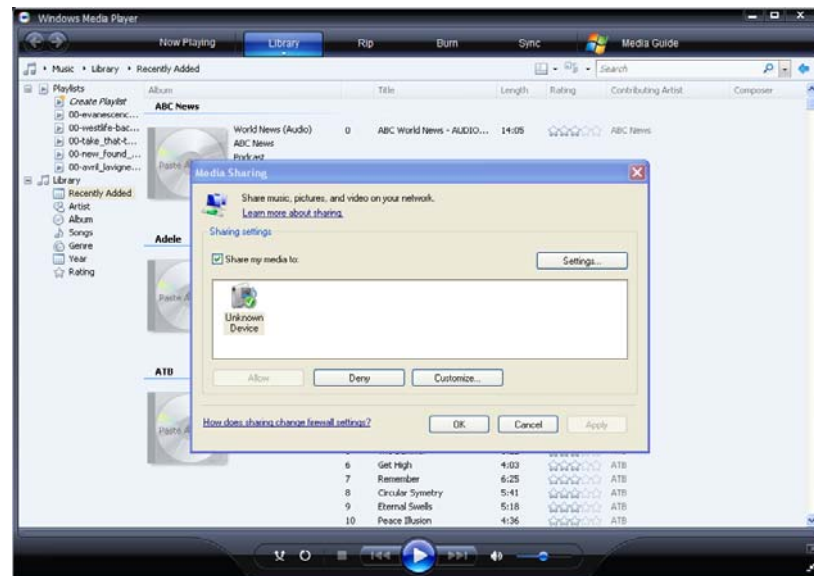
### **3.5.3.2 Sharing Media on your PC**

The Media Sharing feature of Windows Media Player 11 lets you enjoy the contents of your Windows Media Player library from anywhere in your home.

- Open Windows Media Player 11, click **Library** -> **Add Library** -> **Advanced Options** to add or remove media files from the library.

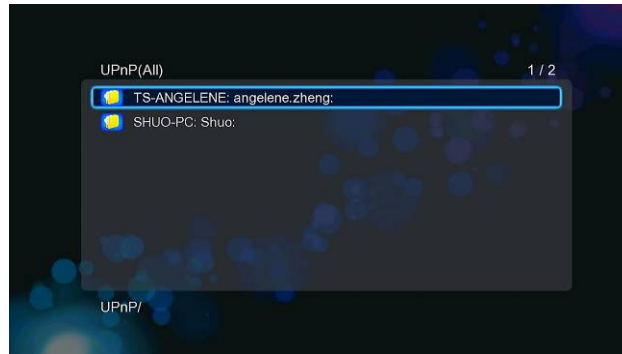


- Click **Library** -> **Media Sharing**, then you can allow or deny devices to access the media library. Click **Allow** to authorize your player.



### 3.5.3.3 Streaming Media on your Player

- Connect your player to the home network (LAN or WLAN).
- Visit **Files Manager** -> **UPnP** menu on the player, select the UPnP-server, and press **OK**.



- Then you can browse the media library shared by Windows Media Player 11.

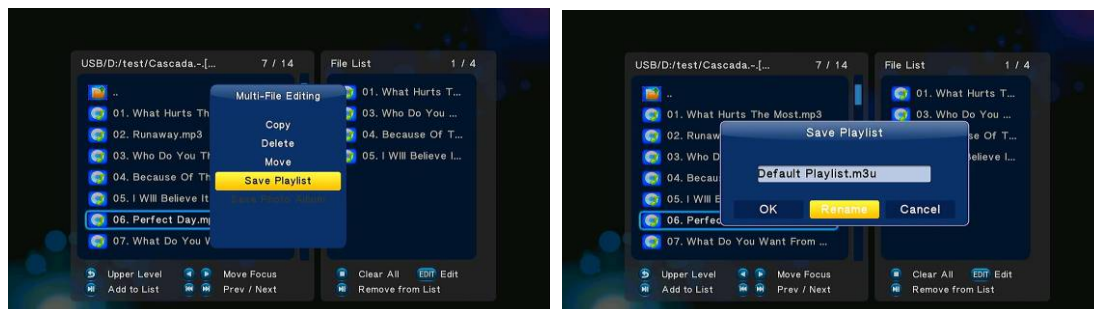
#### Note:

- Make sure your player and your computer are on the same local area network and subnet.
- Firewalls may prevent your player to communicating with your computer. Please open the ports manually and add your player to the 'trusted' list, or disable the firewall temporarily.

## 3.6 Playlist management

### 3.6.1 Music playlist

Press **Geen** button to enter file selecting menu, and then press Green button to save music to playlist.



Enter music library, press **Menu** button and choose **Playlists** to show your music playlists.

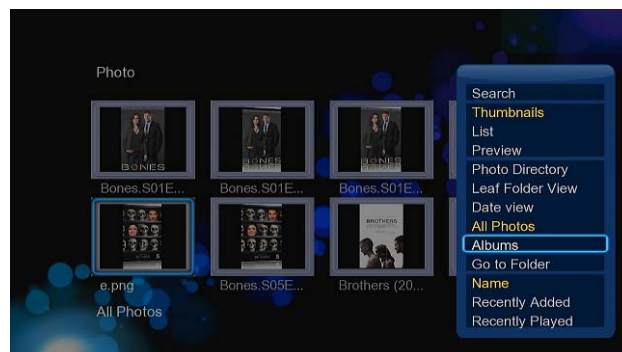


## 3.6.2 Photo Album

Press button to enter file selecting menu, and then save photo to photo ablum.



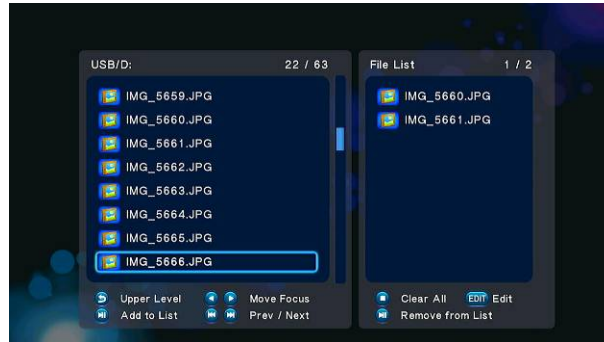
Enter photo library, press **Menu** button and choose **Albums** to show your photo ablums.



## 3.7 Copy Function

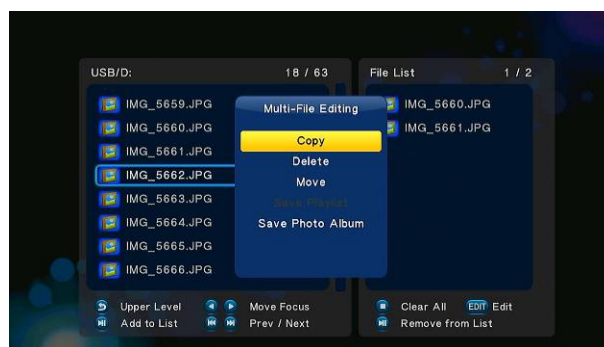
### 3.7.1 Copy under Media Library

Step 1 ,press **Green** to got the file editing Menu,then press copy button to enter file selecting menu.

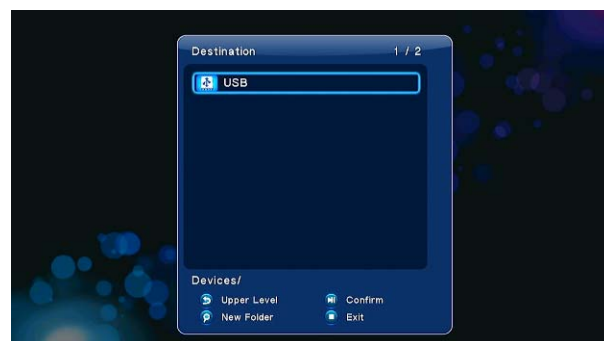


Step 2,press **Play/Pause** button to select file or folder which you want to copy to the list.

Step 3,press **Edit** button to enter multi-file editing menu.



Step 4,Select destination, and then follow the prompt on screen to finish the copy process.



### 3.7.2 Copy under File Manager

Press **green** button to enter file editing menu, choose **Copy** and follow the prompt on screen to finish the process. If you want to select more files and folders, please choose **Multiple Select** to enter the file selecting menu.



## 4 Upgrading the Firmware

The firmware is the operating system (OS) installed on the device. Firmware upgrades can bring new features, improvements and bug fixes.

**Step 1**, Copy 'install.img' to the root directory of a USB stick, and connect it to the USB HOST port of the player.

**Step 2**, Press and hold the button on the back panel, and do not loosen.

**Step 3**, Plug the power cable into the DC IN jack, wait for about 5 seconds or more, and then loosen your finger on the button

Firmware installation will start. There is another way for upgrading. Please refer to **USB Update** in chapter '3.1.5 Miscellaneous' for more details.

## 5 Appendixes

### 5.1 Specifications

#### I/O INTERFACES SUPPORTED:

- USB 2.0 HOST port (compatible to USB 1.1)
- USB 2.0 HOST port (compatible to USB 1.1)
- Memory Card slot (supports SD/MMC)
- Composite (CVBS) A/V jack
- Component Y/Pb/Pr jack
- HDMI V1.3 interface
- S/PDIF Optical & Coaxial jack
- DC-IN 5V 2A

#### NETWORK FEATURE

- 10/100/1000Mbps Auto-Negotiation Ethernet
- 802.11b/g/n WLAN, up to 300Mbps (supported by optional WLAN USB Adapter)

---

**FILE SYSTEM SUPPORTED:**

- FAT/FAT32/NTFS/HFS+/EXT3
- 

**CONTENT FORMATS SUPPORTED:**

- AVI/MKV/TS/MPG/MP4/MOV/VOB/ISO/IFO/DAT/WMV/RM/RMVB, resolution up to 720p/1080i/1080p
  - MP3/OGG/WMA/WAV/FLAC/APE
  - HD JPEG/BMP
- 

**VIDEO CODECS SUPPORTED:**

- MPEG-1
  - HD MPEG-2
  - HD MPEG-4 SP/ASP/AVC (H.264)
  - WMV9 (VC-1)
  - RealNetworks (RM/RMVB) 8/9/10, up to 720p
- 

**AUDIO CODECS SUPPORTED:**

- MP2/3, OGG Vorbis, WMA Standard (DRM, and Advanced Profile not supported), PCM, LPCM, RA, DTS, Dolby Digital, Dolby Digital Plus, Dolby TrueHD)
- 

**SUBTITLE FORMATS SUPPORTED:**

- SRT, SMI, SSA, SUB, IDX+SUB
- 

**Note:** The specifications and design of this product are subject to change without notice.

## 5.2 Frequently Asked Questions

**Question 1. When I try to disconnect the USB device, I keep on getting “The device ‘Generic volume’ cannot be stopped right now. Try stopping the device again later.” message, what should I do?**

**Answer:**

Close any program that might be accessing data on the player, including Windows® Explorer. If it does not work, close all programs and wait for another 20 seconds, then try the green arrow icon again. If it still does not work, you should shut down the player and disconnect the USB cable.

**Question 2. I find new file names and folder names that I never created before or they have strange gibberish names.**

**Answer:**

Most likely, the player’s file allocation table (FAT) has been corrupted. This might be due to the player shutting down (due to low battery power) while reading or writing to your computer by the USB connection. Windows and Macintosh often write extra files to the hard disk such as finder.def or System volume info. These are normal and will not do any harm to the player.



**Question 3. I used my player to transfer files back and forth between different computers. Will defragmenting the player hard disk do any harm to it?**

**Answer:**

Defragmenting the player hard disk may be useful after having transferred many files to and from the player. It is never harmful to use the defragment on the player. Make sure no other programs are running while using the Windows® defragment utility. Make sure you have connected the player with the external power adapter during this procedure.

**Question 4. My files have disappeared from the player.**

**Answer:**

Make sure that you browse your files via the correct browser mode which means correct filtered views such as Photos, Music, or Movies.

**Question 5. During power on, why does the TV will have a short flashing, blue screen or screensaver?**

**Answer:**

This is normal, when the system initializes, it will setup the corresponding parameters so it can output the correct video signal to the TV, during the initializing time, the TV will receive incorrect signals or the signals will not be stable and will cause the TV screen to flash, some TV's will treat this as no signal, and will display a blue screen or screensaver.

**Question 6. Why I can't find my USB drive in file manager?**

**Answer:**

Try to replace a short USB cable or plug in the power cable to your USB drive. You are suggested to plug in one USB drive at the same time.

## 6 Copyrights and Trademarks

### Copyrights

**All rights reserved.** No part of this manual may be reproduced, or transmitted in any form or by any means, whether by electronically or mechanically, without the express written permission from the copyright holder.

Copyrighted materials, such as software, music files, or movies, are protected by local law, and may not be illegally copied or used without permission from the copyright owner.

### Trademarks

Microsoft and Windows are registered trademarks of Microsoft Corporation.

All other trademarks are property of their respective holders.



Manufactured under license under U.S. Patent #'s: 5,451,942; 5,956,674; 5,974,380; 5,978,762; 6,487,535 & other U.S. and worldwide patents issued & pending. DTS and DTS 2.0 + Digital Out are registered

trademarks and the DTS logos and Symbol are trademarks of DTS, Inc.  
© 1996-2008 DTS, Inc. All Rights Reserved.



Manufactured under license from Dolby Laboratories.  
Dolby and the double-D symbol are trademarks of Dolby Laboratories.

## 7 Warranty

### **What your warranty *does not* cover:**

- Acts of nature, such as fire, static discharge.
- Damage from unauthorized repair, alteration or accident.
- Damage from misuse or neglect.
- A unit that has been modified or incorporated into other products or is used for institutional or other commercial purposes.
- Loss of customer's software, firmware, information, or memory data.
- Improper handling or installation.

## 8 GPL Statement

This product contains free software which is licensed under the GNU General Public License. After you purchase this product, you may procure, modify or distribute the source code of the GPL/LGPL software that is used in this product.

To obtain a copy of our open source software, please contact our support center and we will provide you with a CD-ROM of the source code that is used, charging only the actual expense involved. However, please be noted that we can not provide guarantee with the source code, and there is also no technical support for the source code from us.

This device complies with Part 15 of the FCC Rules. Operation is subject to the following two conditions:

- (1) This device may not cause harmful interference, and
- (2) This device must accept any interference received, including interference that may cause undesired operation.

2. Changes or modifications not expressly approved by the party responsible for compliance could void the user's authority to operate the equipment.

NOTE: This equipment has been tested and found to comply with the limits for a Class B digital device, pursuant to Part 15 of the FCC Rules. These limits are designed to provide reasonable protection against harmful interference in a residential installation.

This equipment generates uses and can radiate radio frequency energy and, if not installed and used in accordance with the instructions, may cause harmful interference to radio communications. However, there is no guarantee that interference will not occur in a particular installation. If this equipment does cause harmful interference to radio or television reception, which can be determined by turning the equipment off and on, the user is encouraged to try to correct the interference by one or more of the following measures:

- Reorient or relocate the receiving antenna.

- Increase the separation between the equipment and receiver.

- Connect the equipment into an outlet on a circuit different from that to which the receiver is connected.

- Consult the dealer or an experienced radio/TV technician for help.

**FCC Radiation Exposure Statement**

This equipment complies with FCC radiation exposure limits set forth for an uncontrolled environment. This equipment should be installed and operated with minimum distance 20cm between the radiator & your body