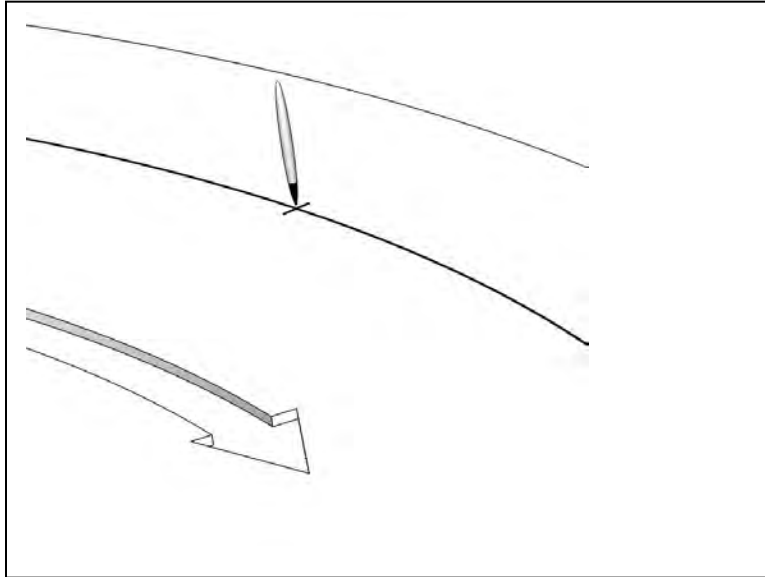
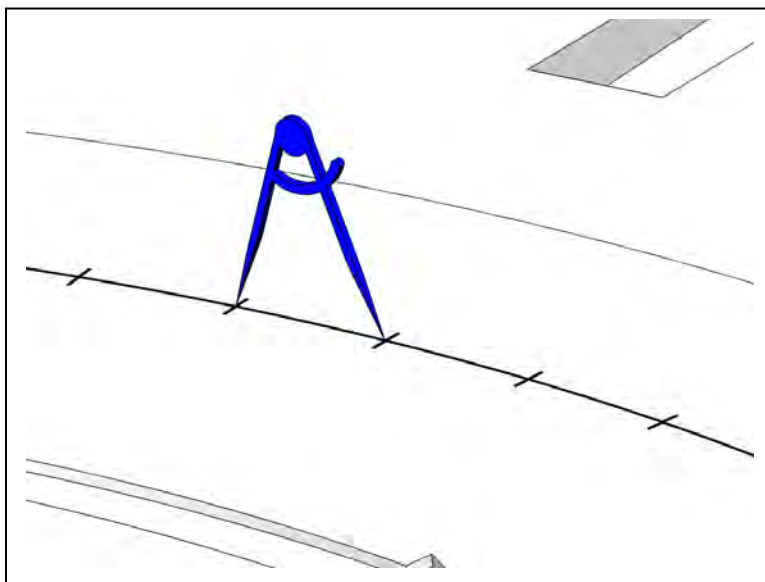


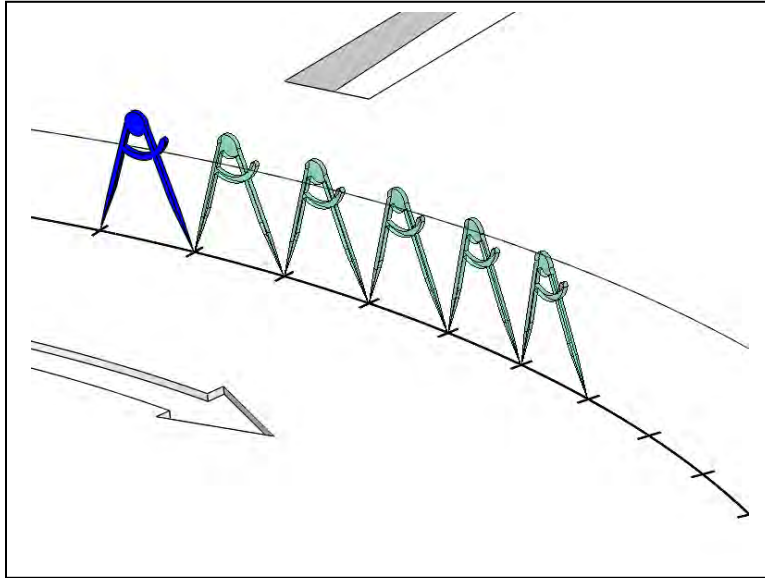
- Mark 1<sup>st</sup> hole, possibly where it crosses true north.



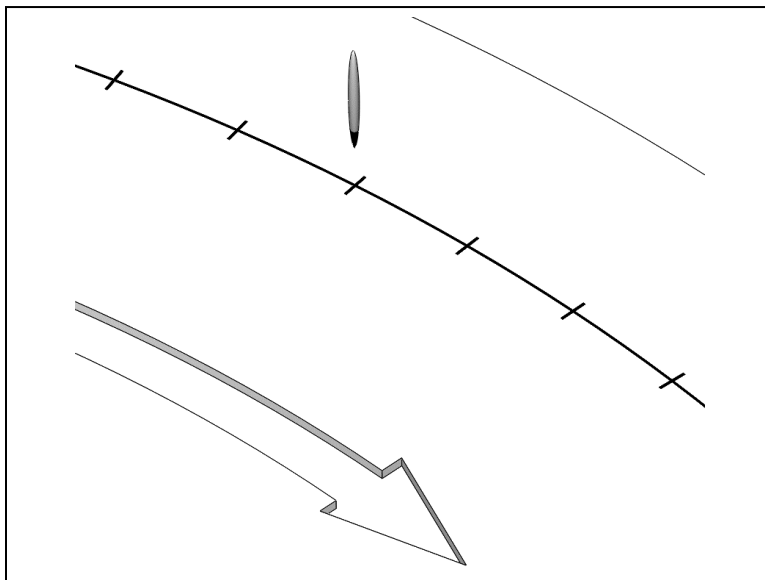
- Set compass at cord length of 6.827". (see appendix)



- Carefully mark all 96 holes re-checking compass (chord length) every 24 holes



- Use marker to darken compass marks.



## 4. Appendix

### 4.1. Threaded Anchor

**Adhesive-Grip Female-Threaded Anchor**  
for Concrete, 316 Stainless Steel, 1/4"-20 Thread



Material	316 Stainless Steel
Thread Size	1/4"-20
Length	1 5/8"
Drill Bit Size	5/16"
Drill Bit Size Decimal Equivalent	0.3125"
Min. Installation Depth	1 3/4"
Diameter	5/16"
Thread Depth	1/2"
Pull-Out Strength	720 lbs.
Tested in	3,000 psi Concrete
Thread Direction	Right Hand
Type	UNC
Spacing	Coarse
Fit	Class 2B
For Use in	Concrete
Removable	Permanent
Anchor Type	Female Threaded
System of Measurement	Inch
RoHS	RoHS 3 (2015/863/EU) compliant

These 316 stainless steel anchors have excellent resistance to chemicals and salt water and may be mildly magnetic. Use them for permanent, high-strength anchoring where vibration is present. To install, fill a clean, drilled hole half full with epoxy adhesive, then insert the anchor until it's flush with the surface. Pull-out strength values are 25% of the ultimate values.

### 4.2. Marking Compass

**Large-Circle Scribing Compass**  
22-1/2" Maximum Circle Diameter



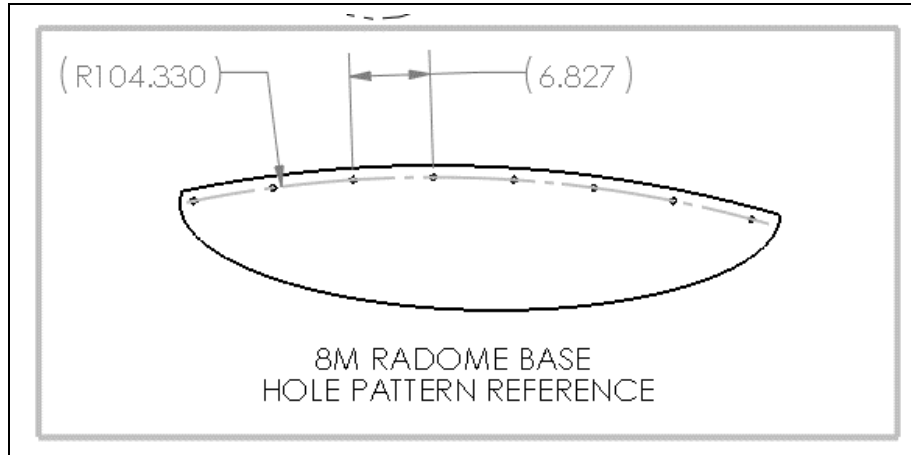
Each In stock  
\$46.87 Each  
2022A3

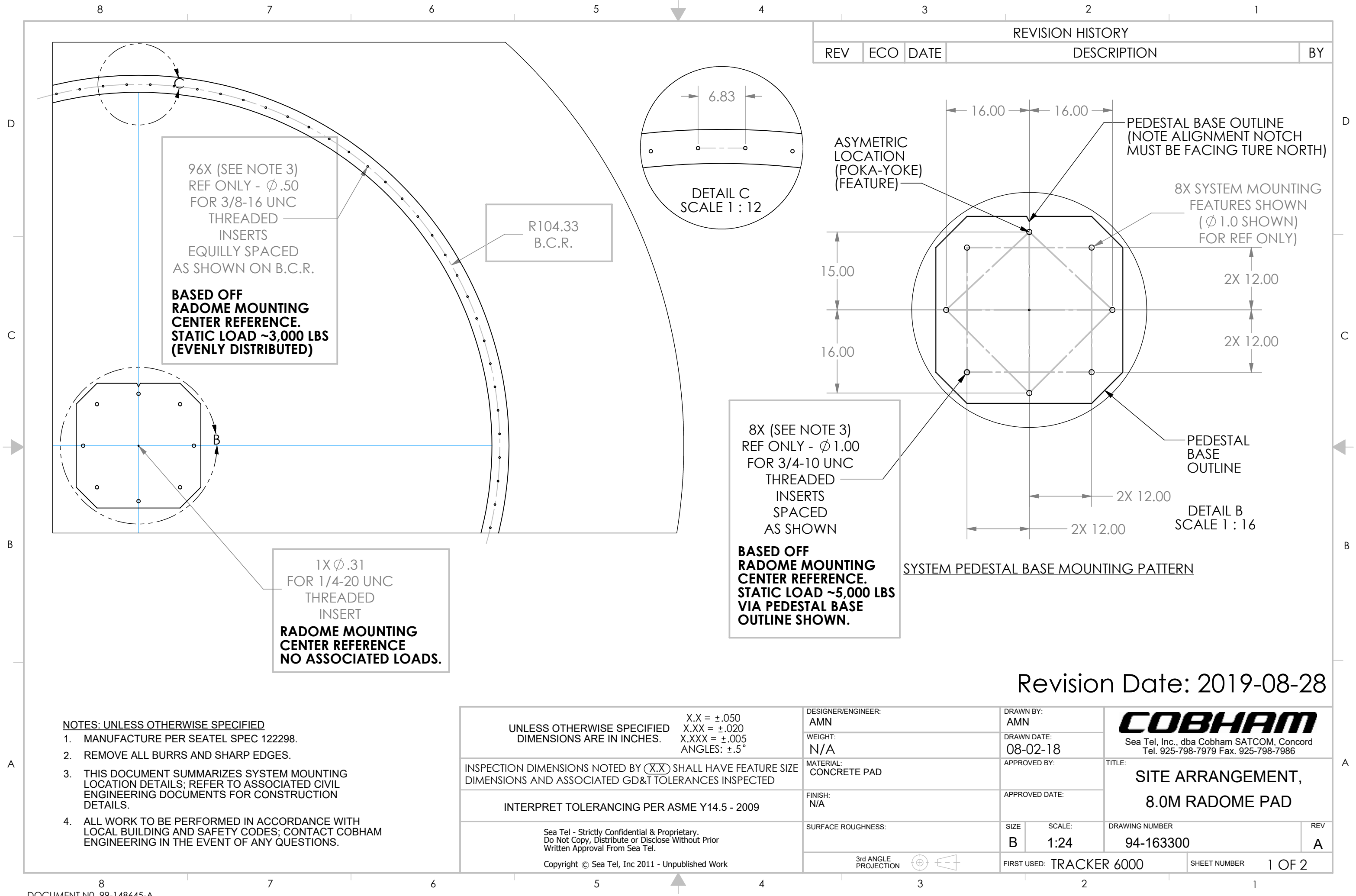
**ADD TO ORDER**

Maximum Circle Diameter	22 1/2"
Leg Length	8"
Marker Type	Scribing Point
Adjustment Method	Knurled Nut
Material	Steel
RoHS	RoHS 3 (2015/863/EU) compliant

A wing joint opens wide for marking and transferring large circles, arcs, and measurements. Also known as dividers, these compasses ensure accuracy when marking and measuring. They have a spring that holds the legs in place.

## 4.3. Radome Reference Dimensions





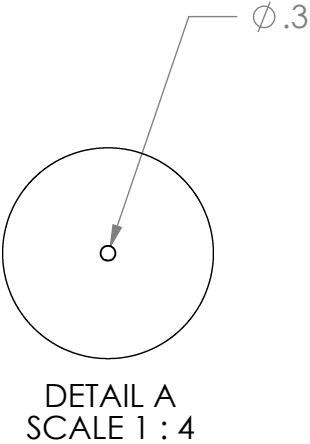
- NOTES: UNLESS OTHERWISE SPECIFIED**
- MANUFACTURE PER SEATEL SPEC 122298.
  - REMOVE ALL BURRS AND SHARP EDGES.
  - THIS DOCUMENT SUMMARIZES SYSTEM MOUNTING LOCATION DETAILS; REFER TO ASSOCIATED CIVIL ENGINEERING DOCUMENTS FOR CONSTRUCTION DETAILS.
  - ALL WORK TO BE PERFORMED IN ACCORDANCE WITH LOCAL BUILDING AND SAFETY CODES; CONTACT COBHAM ENGINEERING IN THE EVENT OF ANY QUESTIONS.

UNLESS OTHERWISE SPECIFIED DIMENSIONS ARE IN INCHES.	X.X = ±.050 X.XX = ±.020 X.XXX = ±.005 ANGLES: ±.5°	DESIGNER/ENGINEER: AMN	DRAWN BY: AMN		<div>COBHAM</div> <div>Sea Tel, Inc., dba Cobham SATCOM, Concord Tel. 925-798-7979 Fax. 925-798-7986</div>		
		WEIGHT: N/A	DRAWN DATE: 08-02-18				
INSPECTION DIMENSIONS NOTED BY (X.X) SHALL HAVE FEATURE SIZE DIMENSIONS AND ASSOCIATED GD&T TOLERANCES INSPECTED	MATERIAL: CONCRETE PAD	APPROVED BY:		TITLE:  SITE ARRANGEMENT,  8.0M RADOME PAD			
							APPROVED DATE:
INTERPRET TOLERANCING PER ASME Y14.5 - 2009	FINISH: N/A	APPROVED DATE:		DRAWING NUMBER  94-163300			REV  A
Sea Tel - Strictly Confidential & Proprietary. Do Not Copy, Distribute or Disclose Without Prior Written Approval From Sea Tel.	SURFACE ROUGHNESS:	SIZE  B	SCALE:  1:24				
	Copyright © Sea Tel, Inc 2011 - Unpublished Work	3rd ANGLE PROJECTION	FIRST USED: TRACKER 6000		SHEET NUMBER  1 OF 2		

Revision Date: 2019-08-28

8X  
[25.40]  
Ø 1.0

NOTCH INDICATES TRUE NORTH



ACTUAL BUILD INSERT  
PLACEMENT TEMPLATES, (2 EA.)  
**TEMPLATE #1 (RE-USE PROTOTYPE)**  
1X Ø 0.38" - CENTER REFERENCE  
8X Ø 1.00 - PEDESTAL MOUNTING

SIZE	SCALE:	DRAWING NUMBER	VER
B	1:24	94-163300	A
		SHEET NUMBER	2 OF 2

## ORACLE BOM Explosion Report

**Item Number:** 62-168704

**Description:** 8M RADOME HOLE MARKING JIG

**Item Revision:** A.02 MCO-00049240

**Date as of:** 07/09/2020 11:46:54 AM PDT

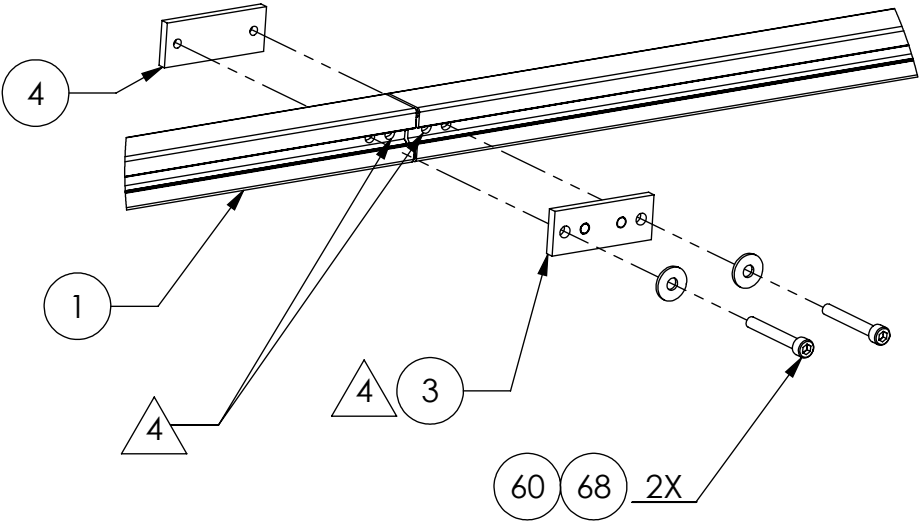
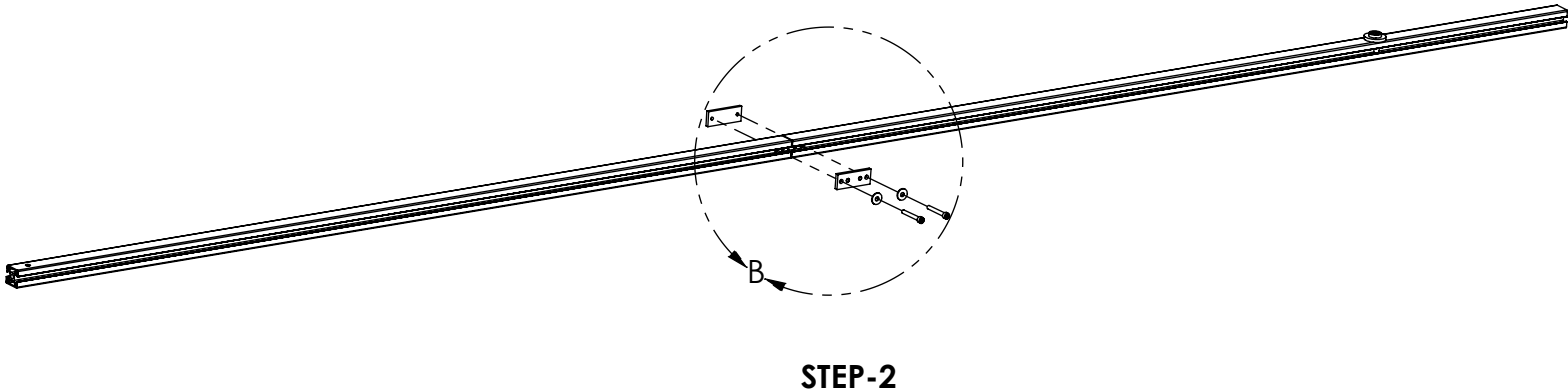
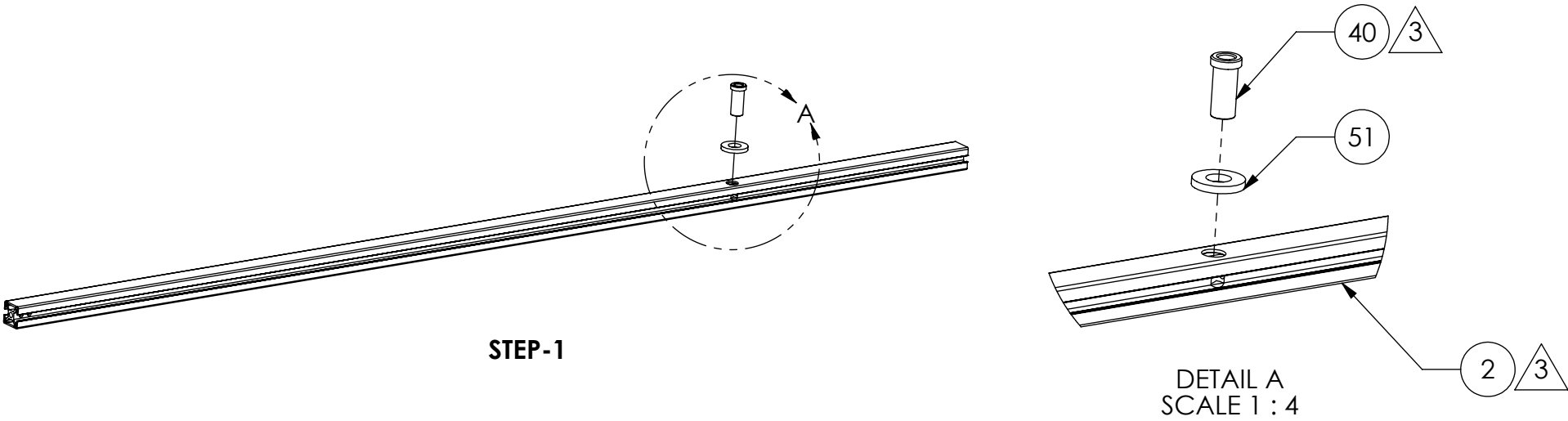
Find Num	Qty	Inventory Unit (LN6)	Number	Rev	Description / Title	BOM Notes
0	REF	pcs	97-168704	A.01 MCO-00049240	8M RADOME HOLE MARKING JIG	
1	1	pcs	41-168691-A	01 MCO-00049205	ARM, LONG, 8M RADOME DRILL JIG, LEFT	
2	1	pcs	41-171246-A	01 MCO-00049205	ARM, LONG, 8M RADOME DRILL JIG, RIGHT	
3	1	pcs	41-171248-A	01 MCO-00049205	PIN PLATE, 8M RADOME DRILL JIG	
4	1	pcs	41-171249-A	01 MCO-00049205	CLAMP PLATE, 8M RADOME DRILL JIG	
5	1	pcs	41-207804-012	MCO-00047397	EXTRUSION, T-SLOT, SINGLE, 30MM X 30MM X 12IN, AL	
20	2	ea	41-207768-000	MCO-00047207	INSIDE CORNER BRACKET, 80/20, 3030, 2 HOLE	
21	1	pcs	41-171247-A	01 MCO-00049205	BRACKET MOD, 8M RADOME HOLE MARKING JIG	
30	5	ea	52-207184-000	MCO-00047375	NUT, 30mm T-SLOT, M6 W/SCREW, ZINC PLATED STEEL	
40	1	ea	41-207769-000	MCO-00047375	BUSHING, DRILL, .4375 IN I.D.	
41	1	ea	41-207771-000	MCO-00047375	ANCHOR, CONCRETE, 1/4-20 INT, 0.3125 IN OD, 316 SS	
50	1	ea	41-207770-000	MCO-00047375	SCREW, SOCKET HD, SHOULDER, 1/4-20 X 1.25, SS	
51	1	ea	53-207159-000	MCO-00047375	WASHER, FLAT, OVERSIZED, 5/8 ID X 1.375 OD, SS	
60	2	ea	119973-143	MCO-00024042	SCREW, SOCKET HD, M6 X 45, SS.	
68	2	ea	114580-250	MCO-00031530	WASHER, FLAT, M6, SS.	
		pcs	62-168704	A.02 MCO-00049240	8M RADOME HOLE MARKING JIG	

**Created By:** Mike Needham

**Create Time:** 07/09/2020 11:47:16 AM PDT

PRINT THIS DRAWING ON 11" X 17" SIZE PAPER WHEN  
SEND IT ALONG WITH THE ASSEMBLY 62-168704

REVISION HISTORY				
REV	ECO	DATE	DESCRIPTION	BY
A01	35597	3/17/20	ADDED 1:1 TEMPLATE ON SHEET 3, CHANGED SHEET SIZE FROM "D" TO "B".	MS



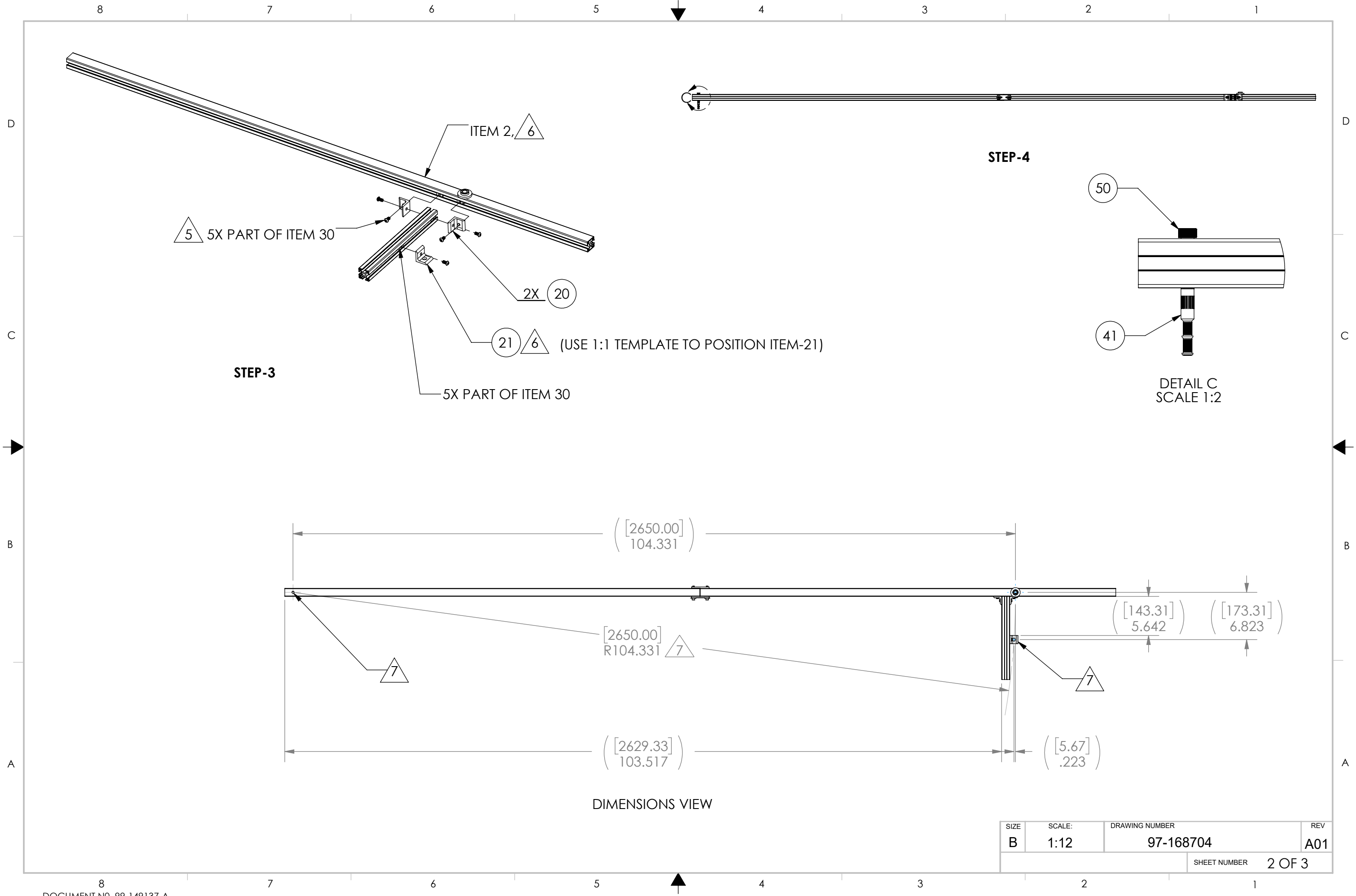
DETAIL B  
SCALE 1 : 4

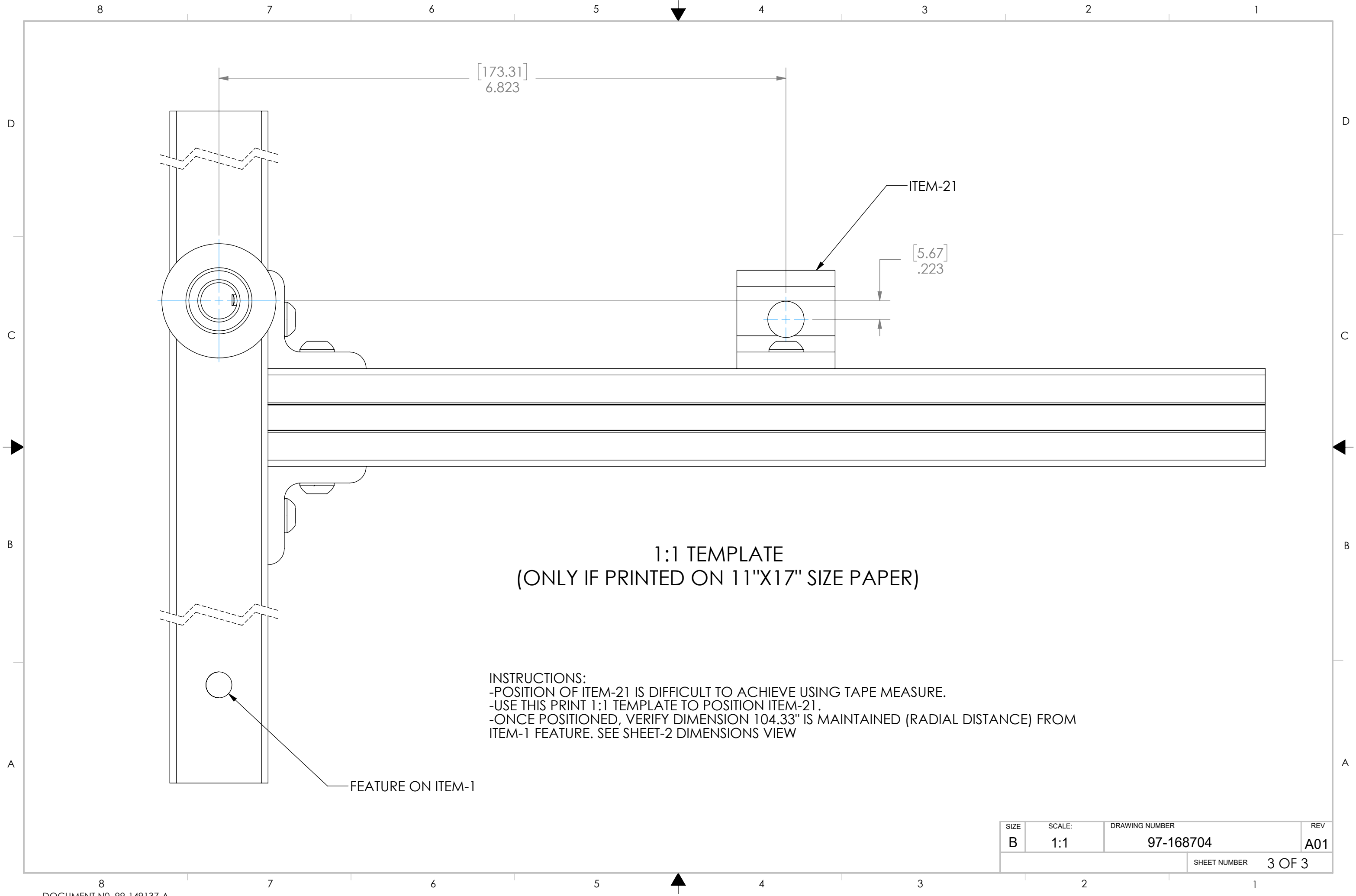
NOTES: UNLESS OTHERWISE SPECIFIED

- MANUFACTURE PER SEATEL STANDARD 99-122298.
- THIS DRAWING GOVERNS THE ASSEMBLY OF ALL VARIANTS OF THE PART NUMBER 62-168704, REGARDLESS OF ASSEMBLY OR DRAWING REVISION. SOME ITEMS SHOWN ON THIS DRAWING MAY NOT BE INCLUDED ON THE BILL OF MATERIAL, OR MAY APPEAR IN A DIFFERENT ORIENTATION THAN THE DRAWING DEPICTS FOR SOME VARIANTS. REFER TO THE BILL OF MATERIALS FOR THE VARIANT NUMBER SHOWN ON THE WORK ORDER.
- PRESS DRILL BUSHING (ITEM 40) INTO HOLE IN ITEM 2 AS SHOWN UNTIL BUSHING BOTTOMS OUT ON WASHER (ITEM 51). USE GREEN LOCTITE IF NEEDED TO SECURE DRILL BUSHING TO ITEM 2.
- M6 PINS PROTRUDING FROM ITEM 3 FIT INTO INDICATED HOLES OF ITEMS 1 & 2.
- DO NOT TIGHTEN HW UNTIL ITEM 21 IS IN CORRECT POSITION. TIGHTEN HW JUST ENOUGH TO ALLOW INDICATED ITEMS TO MOVE WITHOUT SLACK.
- NOTE ORIENTATION.
- POSITION ITEM 21 ON THIS RADIUS MEASURED FROM THE INDICATED FEATURE OF ITEM 1, THEN TIGHTEN HW AND CHECK THAT ITEM 21 HAS MAINTAINED POSITION.
- SECONDARY UNITS ARE IN MM.

UNLESS OTHERWISE SPECIFIED DIMENSIONS ARE IN INCHES.  X.X = ±.050 X.XX = ±.020 X.XXX = ±.005 ANGLES: ±.5°  INSPECTION DIMENSIONS NOTED BY (X.X) SHALL HAVE FEATURE SIZE DIMENSIONS AND ASSOCIATED GD&T TOLERANCES INSPECTED  INTERPRET TOLERANCING PER ASME Y14.5 - 2009  Sea Tel - Strictly Confidential & Proprietary. Do Not Copy, Distribute or Disclose Without Prior Written Approval From Sea Tel.  Copyright © Sea Tel, Inc 2011 - Unpublished Work	DESIGNER/ENGINEER: WK	DRAWN BY: WK	<b>COBHAM</b> Sea Tel, Inc., dba Cobham SATCOM, Concord Tel. 925-798-7979 Fax. 925-798-7986	
	WEIGHT: 7.2 lbs	DRAWN DATE: 08/01/2019		
	MATERIAL: N/A	APPROVED BY:	TITLE:  8M RADOME HOLE MARKING JIG	
	FINISH: N/A	APPROVED DATE:		
3rd ANGLE PROJECTION	SURFACE ROUGHNESS:	SIZE B	SCALE: 1:12	DRAWING NUMBER 97-168704
		FIRST USED: First Used	SHEET NUMBER 1 OF 3	REV A01







SIZE	SCALE:	DRAWING NUMBER	REV
B	1:1	97-168704	A01
		SHEET NUMBER	3 OF 3

# ORACLE BOM Explosion Report

**Item Number:** 62-172181

**Description:** RADOME ASSY, GA INSTALL, 8.0M, KATX-E, LEO, WHITE

**Item Revision:** A MCO-00049343

**Date as of:** 07/09/2020 11:46:54 AM PDT

Find Num	Qty	Inventory Unit (LN6)	Number	Rev	Description / Title	B
0	REF	pcs	94-163300	A MCO-00049343	SITE ARRANGEMENT, RADOME PAD, 8.0M, LEO	
0	REF	pcs	97-163300	A MCO-00049343	ASSY DWG, RADOME GA INSTALL, 8.0M, T6000	
1	1	pcs	88-208026-SAAA	B MCO-00049206	RADOME ASSY, 8.0M (30FT), C-XTX, SIDE DOOR, WHITE	
10	16	ea	119918	01 ECO-00013239	STRAP, RADOME	
20	1	pcs	62-156979	A MCO-00049240	KIT, SNOW ROPE ASSEMBLY	Not shown. In on anticipated instructions inc
30	1	pcs	62-171768	A.03 MCO-00049240	KIT, OBSTRUCTION LIGHT AND LIGHTNING DIVERter	
40	1	pcs	62-170734	A.02 MCO-00049343	HARDWARE KIT, RADOME ASSY, 8.0M, T6000	
		pcs	62-172181	A MCO-00049343	RADOME ASSY, GA INSTALL, 8.0M, KATX-E, LEO, WHITE	

**Created By:** Mike Needham

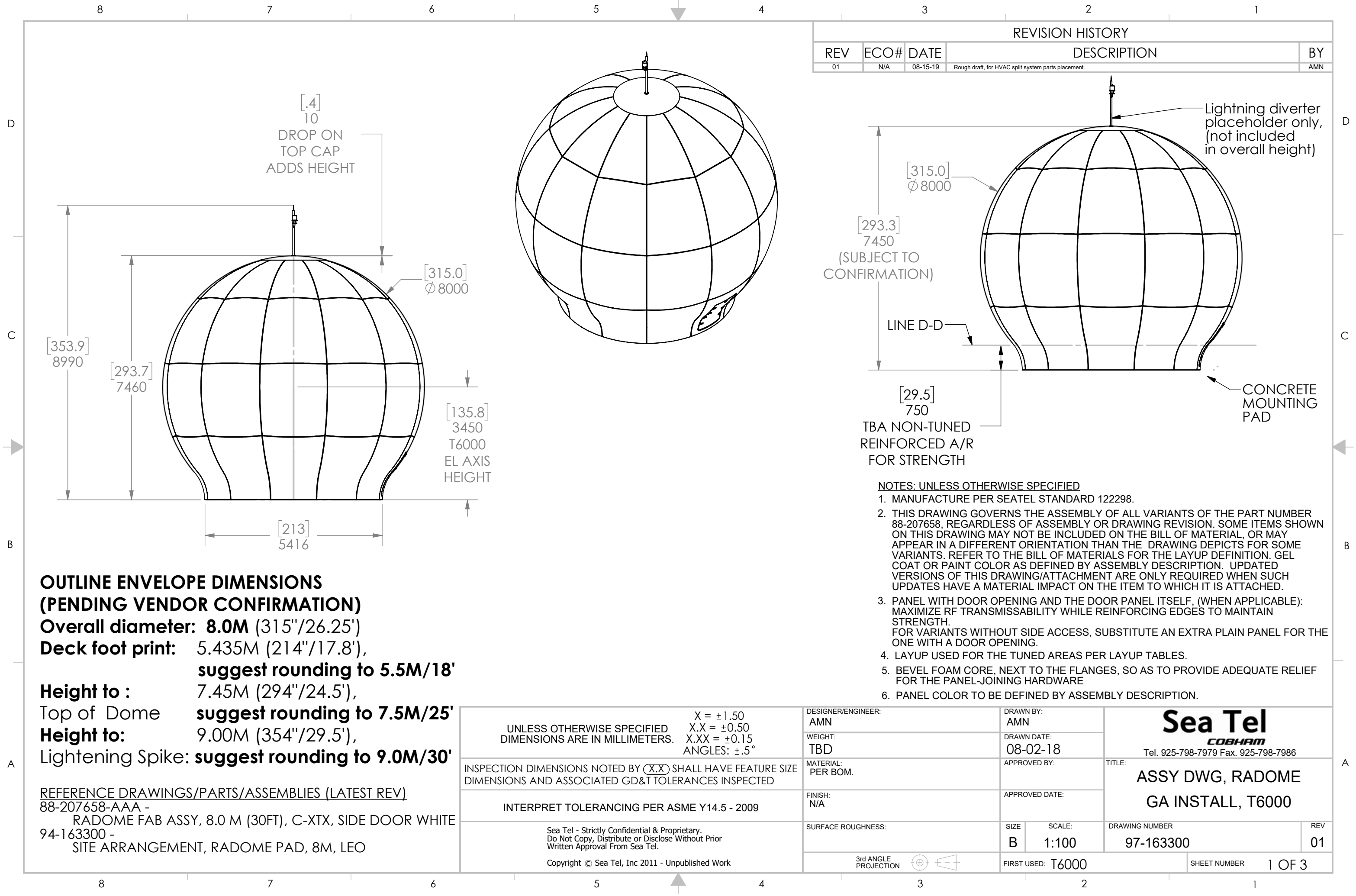
**Create Time:** 07/09/2020 11:47:16 AM PDT

# ORACLE BOM Explosion Report

**Item Number:** 88-207658-SAAA  
**Description:** RADOME PANEL SET, 8.0M, C-XTX, SIDE DOOR, WHITE  
**Item Revision:** Introductory  
**Date as of:** 07/09/2020 11:46:54 AM PDT

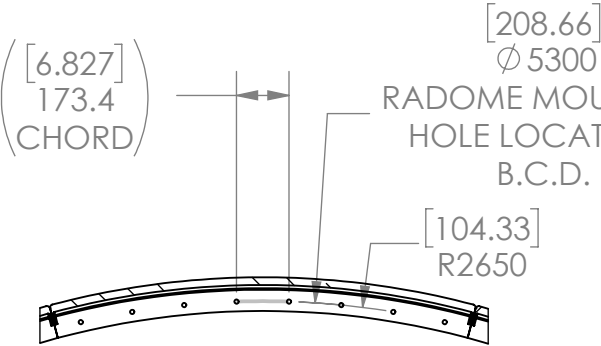
Find Num	Qty	Inventory Unit (LN6)	Number	Rev	Description / Title	BOM N
1	1	pcs	88-124573-S	01 MCO-00049206	RADOME TUNED LAYUP, C-XTX, LARGE (ALT)	Defines tuned are
2	1	pcs	97-122979-NN	A ECO-00033235	COLOR SAMPLE LISTING	Reference for col
10	1	pcs	41-169009-A	02 ECO-00036265	TOP CAP, 8M	
11	12	pcs	41-169010-A	02 ECO-00036265	UPPER PANEL, 8M	
12	12	pcs	41-169011-A	02 ECO-00036265	MIDDLE-UPPER PANEL, 8M	
13	12	pcs	41-169057-A	02 ECO-00036265	MIDDLE-LOWER PANEL, 8M	
14	11	pcs	41-169058-A	02 ECO-00036265	BOTTOM PANEL, 8M	
15	1	pcs	41-169059-A	02 ECO-00036265	BOTTOM PANEL WITH DOOR OPENING, 8M	
16	1	pcs	41-169060-A	02 ECO-00036265	DOOR, 8M	
		pcs	88-207658-SAAA	Introductory	RADOME PANEL SET, 8.0M, C-XTX, SIDE DOOR, WHITE	

**Created By:** Mike Needham  
**Create Time:** 07/09/2020 11:47:16 AM PDT

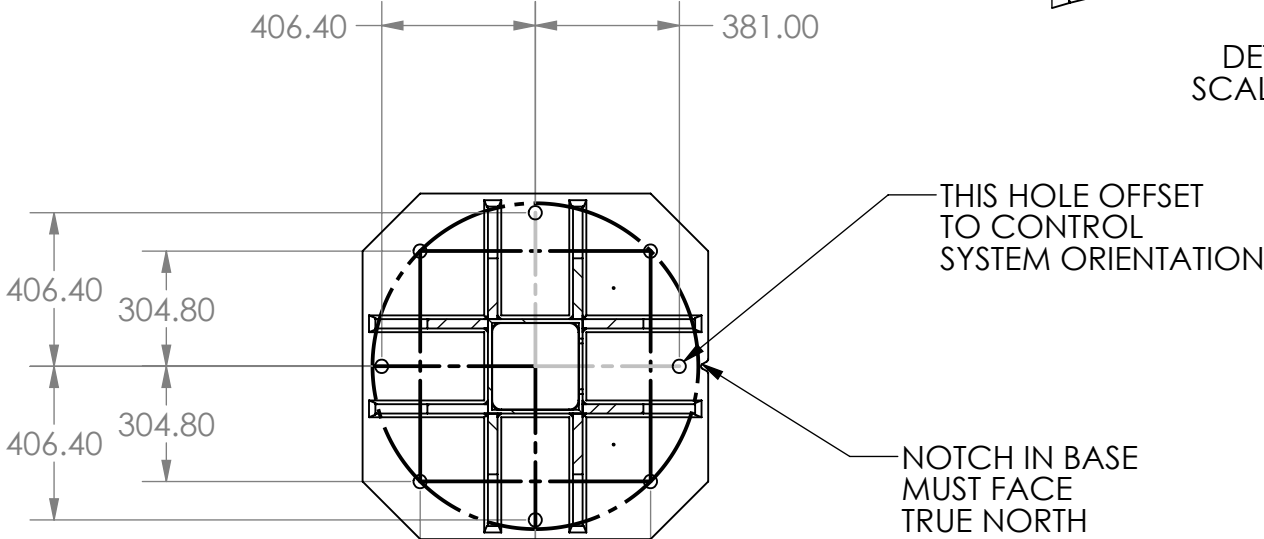


**PROPOSED GENERAL ASSEMBLY (GA)  
MOUNTING HOLE PATTERN  
NOMINAL SIZE: 3/4" THREADED INSERTS OR STUDS  
B.C.D.: 5300 MM [208.66"]  
QTY: 8, (NOTE ONE MOUNTING HOLE LOCATION,  
TO CONTROL SYSTEM ORIENTATION.**

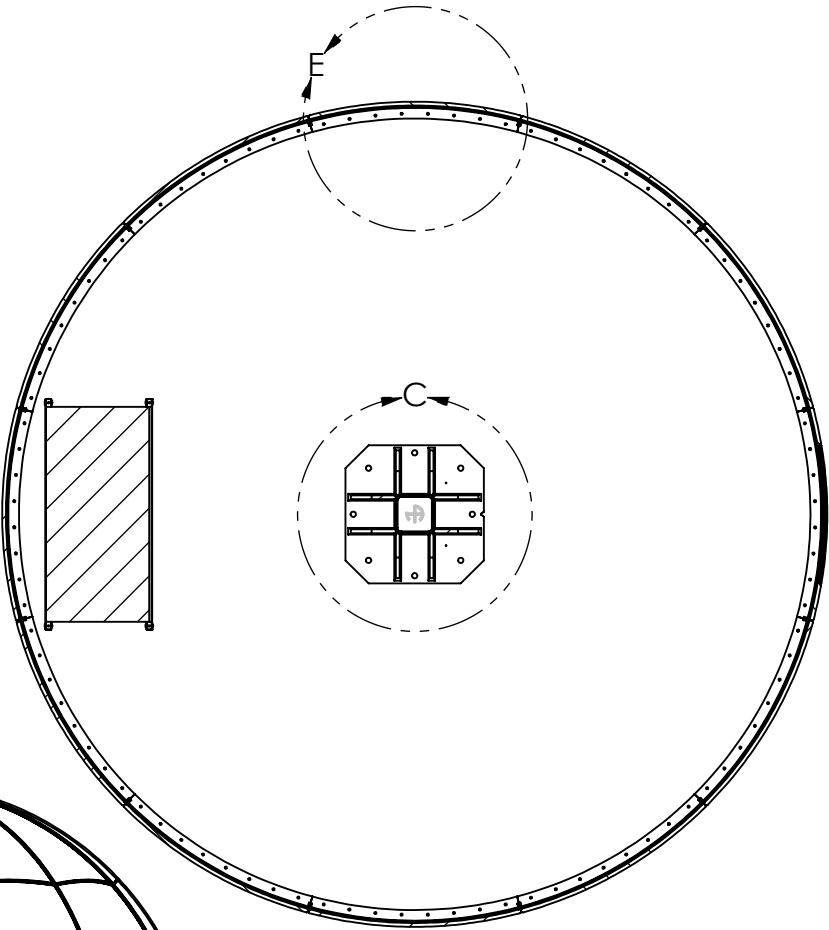
**PROPOSED RADOME MOUNTING HOLE PATTERN  
NOMINAL SIZE: 3/8" THREADED INSERTS OR STUDS  
B.C.D.: 5300 MM [208.66"]  
QTY: 96 (CHORD LENGTH ~173.4MM [6.83"]).**



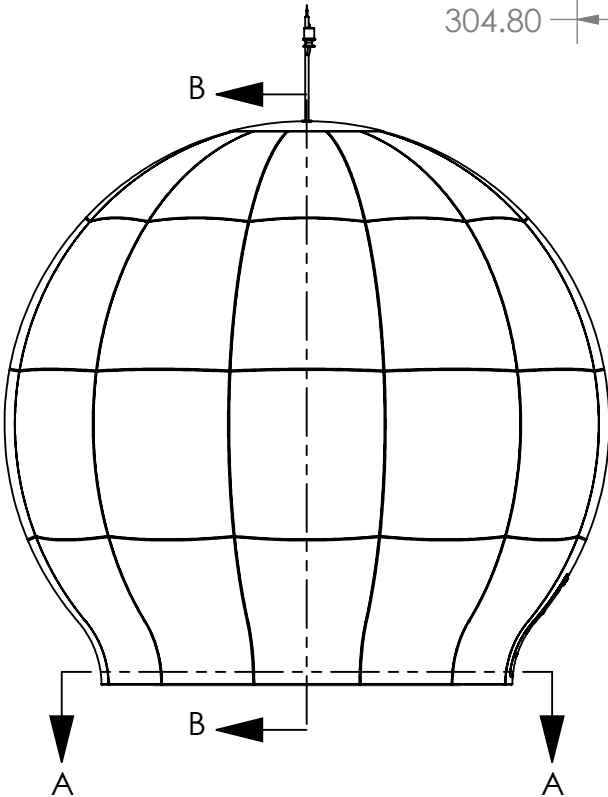
DETAIL E  
SCALE 1 : 25



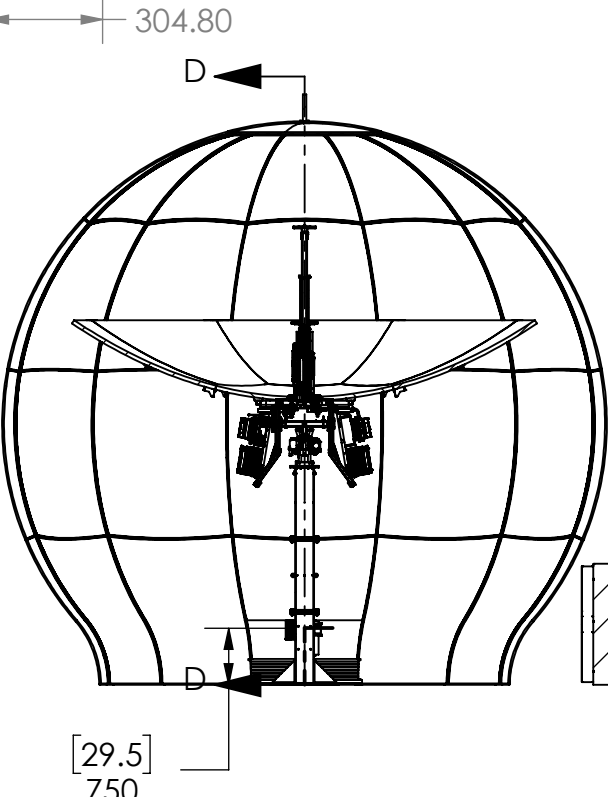
DETAIL C  
SCALE 1 : 20



SECTION A-A  
SCALE 1 : 50

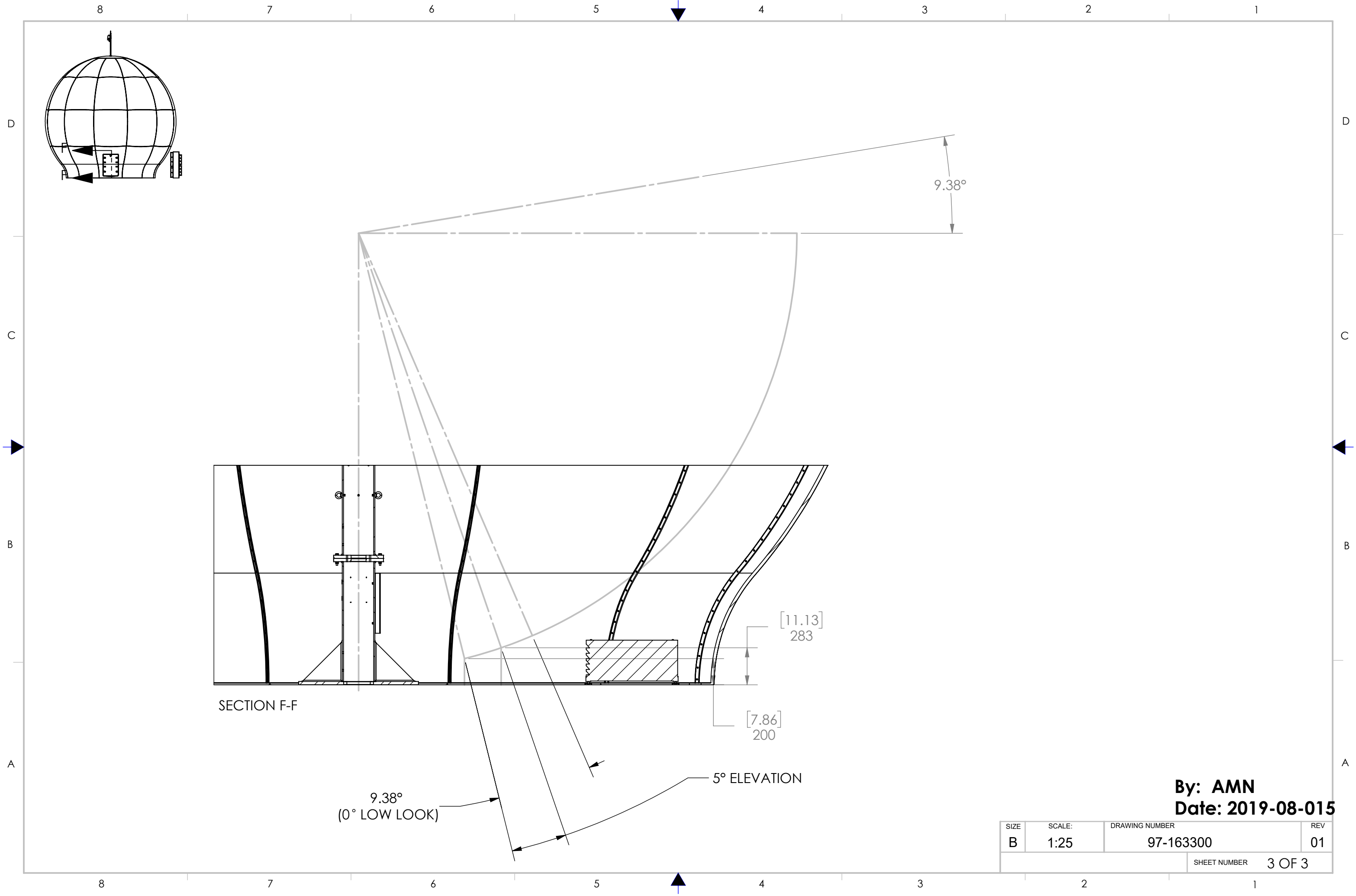


SECTION B-B



SECTION D-D

SIZE	SCALE:	DRAWING NUMBER	REV
B	1:100	97-163300	01
SHEET NUMBER		2 OF 3	



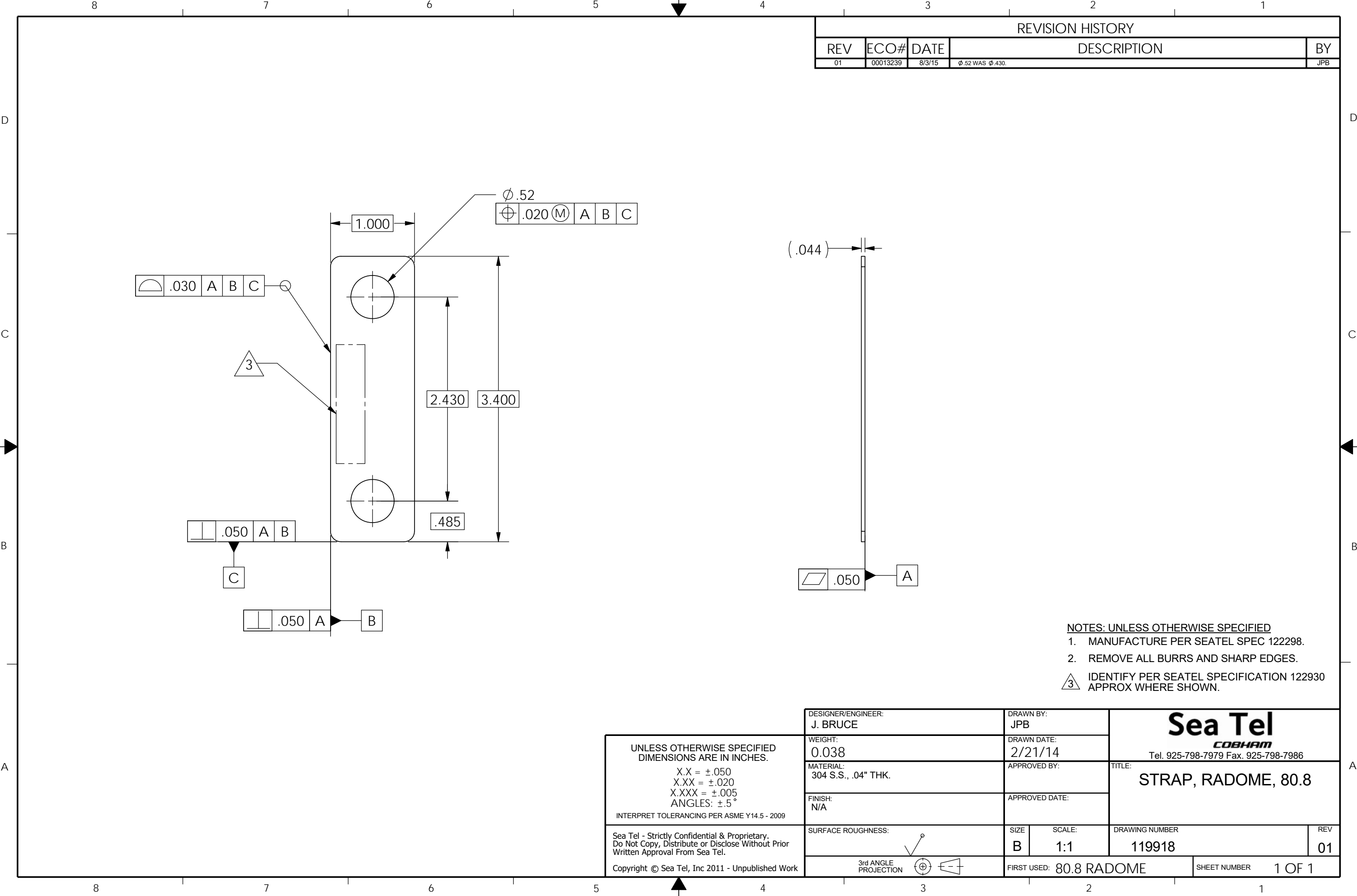
# ORACLE BOM Explosion Report

**Item Number:** 62-175222  
**Description:** HARDWARE KIT, FIELD INSTALLATION, T6000 800W  
**Item Revision:** A.02 ECO-00039371  
**Date as of:** 03/24/2021 06:36:42 AM PDT

Find Num	Qty	Inventory Unit (LN6)	Number	Rev	Description / Title	BOM Notes
1	2	pcs	62-175275	A.01 ECO-00039371	HARDWARE KIT, BUC MOUNTING, T6000 800W	
2	2	pcs	62-175277	A.02 ECO-00039371	HARDWARE KIT, WAVEGUIDE TO BUC, T6000 800W	
3	2	pcs	62-175278	A.01 ECO-00039371	HARDWARE KIT, BALANCE WEIGHTS, T6000 800W	
4	2	pcs	62-175310	A.01 ECO-00039371	HARDWARE KIT, BUC'S SUPPORT BRKT TO FRAME, 800W	
5	1	pcs	62-170230	A.03 ECO-00039337	HARDWARE KIT, REFLECTOR TO MOUNTING WELDMENT	
6	1	pcs	62-170231	A.01 MCO-00049343	HARDWARE KIT, ABSORBER PLATES TO FEED	
7	1	pcs	62-170240	A.01 MCO-00049343	HARDWARE KIT, FEED TO REFLECTOR HUB	
8	1	pcs	62-170238	A.02 MCO-00049343	HARDWARE KIT, FEED & BASEBALL SWITCH TO WAVEGUIDE	
9	1	pcs	62-170232	A.01 MCO-00049343	HARDWARE KIT, BASE STAND ASS"Y	
10	1	pcs	62-176003	A.01 ECO-00039371	HARDWARE KIT, RADOME LIGHT, MUTE DOOR, E STOP	
11	1	pcs	62-170299	A.01 MCO-00049343	HARDWARE KIT, LNB	
12	1	pcs	67-175694	A ECO-00039188	KIT, FUSE, T6000 800W	
19	1	ea	48-207483-000	MCO-00046423	LUBRICANT, ELETRICAL CONTACT, CONDUCTIVE	
20	1	ea	48-207231-003	MCO-00015399	BOX, BROWN, 28 X 16 X 14	
		ea	62-175222	A.02 ECO-00039371	HARDWARE KIT, FIELD INSTALLATION, T6000 800W	


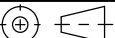
**Created By:** Mike Needham  
**Create Time:** 03/24/2021 06:37:52 AM PDT





REVISION HISTORY				
REV	ECO#	DATE	DESCRIPTION	BY
01	00013239	8/3/15	Ø .52 WAS Ø .430.	JPB

NOTES: UNLESS OTHERWISE SPECIFIED  
1. MANUFACTURE PER SEATEL SPEC 122298.  
2. REMOVE ALL BURRS AND SHARP EDGES.  
3. IDENTIFY PER SEATEL SPECIFICATION 122930 APPROX WHERE SHOWN.

	DESIGNER/ENGINEER: J. BRUCE	DRAWN BY: JPB		<div>Sea Tel</div> <div>COBHAM</div> <div>Tel. 925-798-7979 Fax. 925-798-7986</div>	
UNLESS OTHERWISE SPECIFIED DIMENSIONS ARE IN INCHES.  X.X = ±.050 X.XX = ±.020 X.XXX = ±.005 ANGLES: ±.5°  INTERPRET TOLERANCING PER ASME Y14.5 - 2009	WEIGHT: 0.038	DRAWN DATE: 2/21/14			
	MATERIAL: 304 S.S., .04" THK.	APPROVED BY:		TITLE:  STRAP, RADOME, 80.8	
	FINISH: N/A	APPROVED DATE:			
Sea Tel - Strictly Confidential & Proprietary. Do Not Copy, Distribute or Disclose Without Prior Written Approval From Sea Tel.  Copyright © Sea Tel, Inc 2011 - Unpublished Work	SURFACE ROUGHNESS:  	SIZE B	SCALE: 1:1	DRAWING NUMBER 119918	REV 01
	3rd ANGLE PROJECTION 	FIRST USED: 80.8 RADOME			SHEET NUMBER 1 OF 1

# ORACLE BOM Explosion Report

**Item Number:** 62-165842  
**Description:** RADOME LIGHTING KIT, T6000  
**Item Revision:** A MCO-00049343  
**Date as of:** 07/09/2020 11:46:54 AM PDT

Find Num	Qty	Inventory Unit (LN6)	Number	Rev	Description / Title	BOM Notes
1	6	ea	31-207930-000	MCO-00045323	VEHICLE LIGHT, LED, 12-24 VDC 900 LUMENS IP69K	
2	1	pcs	88-208025-000	MCO-00047693	POWER SUPPLY, 240W, MEANWELL 24V 10A LED DRVR	
3	1	pcs	33-207313-000	MCO-00047453	OUTLET / SW BOX, SINGL GANG, 4-1/2 THREADED OUTLET	
4	2	ea	109258-10	MCO-00047507	RELIEF, STRAIN	
5	1	ea	33-207312-000	MCO-00047453	SWITCH, TOGGLE, 2 POLE, 15A, 120/277VAC, IVORY	
6	1	ea	33-207314-000	MCO-00047453	TOGGLE COVER, WET LOCATION, GRAY, SNGL GANG	
7	1	ea	37-207166-180	MCO-00046144	POWER CORD, 10 AMP IEC C14 TO C13 AUTO-LOCK, 180"	
8	720	in	32-207224-000	MCO-00045961	CABLE, 2 CONDUCTOR, (16/30) 18AWG TIN COPPER, 600V	
9	1	ea	31-207642-002	MCO-00045324	CONNECTOR SOCKET, 4 PIN, IP67, 18AWG LEADS, 12"	
10	20	in	119526-3	MCO-00012114	HEAT SHRINK, 3/8 DIA, GLU-CORE	
11	4	in	119526-4	MCO-00012114	HEAT SHRINK, 1/2 DIA, GLU-CORE	
12	8	ea	31-207992-000	MCO-00047594	BUTT SPLICE, 18-22AWG HEATSHRINK, CLR W/ RED	
13	10	ea	31-207992-010	MCO-00047594	REDUCING BUTT SPLICE, 14/16-18/22 AWG HEATSHRINK,	
14	1	ea	110234-4	MCO-00012115	TERMINAL, RING INSULATED, 16-14AWG, #10, BLUE	
15	4	ea	121899-18	MCO-00012115	WIRE PIN TERMINAL, CRIMP, 18 AWG, RED	
		pcs	62-165842	A MCO-00049343	RADOME LIGHTING KIT, T6000	

**Created By:** Mike Needham  
**Create Time:** 07/09/2020 11:47:16 AM PDT

## ORACLE BOM Explosion Report

**Item Number:** 62-164608  
**Description:** MUTE DOOR SENSOR KIT  
**Item Revision:** A MCO-00049343  
**Date as of:** 07/09/2020 11:46:54 AM PDT

Find Num	Qty	Inventory Unit (LN6)	Number	Rev	Description / Title	BOM Notes
0	1	pcs	93-164608	A MCO-00049343	SCHEMATIC, DOOR MUTE SENSOR CIRCUIT	
1	1	ea	33-207196-000	MCO-00029778	SWITCH, MAGETICALLY ACTUATED, SPST-NO	
2	150	in	32-207224-000	MCO-00045961	CABLE, 2 CONDUCTOR, (16/30) 18AWG TIN COPPER, 600V	
3	1	ea	31-207642-000	MCO-00031265	CONNECTOR, 2 PIN, IP67, 12" LEADS	
4	4	ea	31-207992-000	MCO-00047594	BUTT SPLICE, 18-22AWG HEATSHRINK, CLR W/ RED	
5	10	in	119526-3	MCO-00012114	HEAT SHRINK, 3/8 DIA, GLU-CORE	
6	1	ea	31-207786-010	MCO-00045961	FIELD CONNECTOR, M8-3P, SCREW TERMINALS	
		pcs	62-164608	A MCO-00049343	MUTE DOOR SENSOR KIT	

**Created By:** Mike Needham  
**Create Time:** 07/09/2020 11:47:16 AM PDT

ASSEMBLY NOTES:

1. TERMINATE ALL WIRE WITH PIN TERMINALS BEFORE INSTALLING INTO TERMINAL BLOCKS USING TOOL 90143 FROM WEIDMULLER.
2. TERMINATE ALL WIRE WITH RIGHT ANGLE QUICK TERMINALS BEFORE CONNECTING TO SNAP IN OUTLET USING TOOL 118629 FROM MORRIS TOOLS CAT # 5448.
3. TERMINATE ALL WIRE WITH RING TERMINALS BEFORE CONNECTING TO CIRCUIT BREAKERS USING TOOL 30-502 FROM IDEAL.

VERSION HISTORY

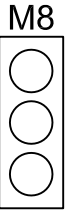
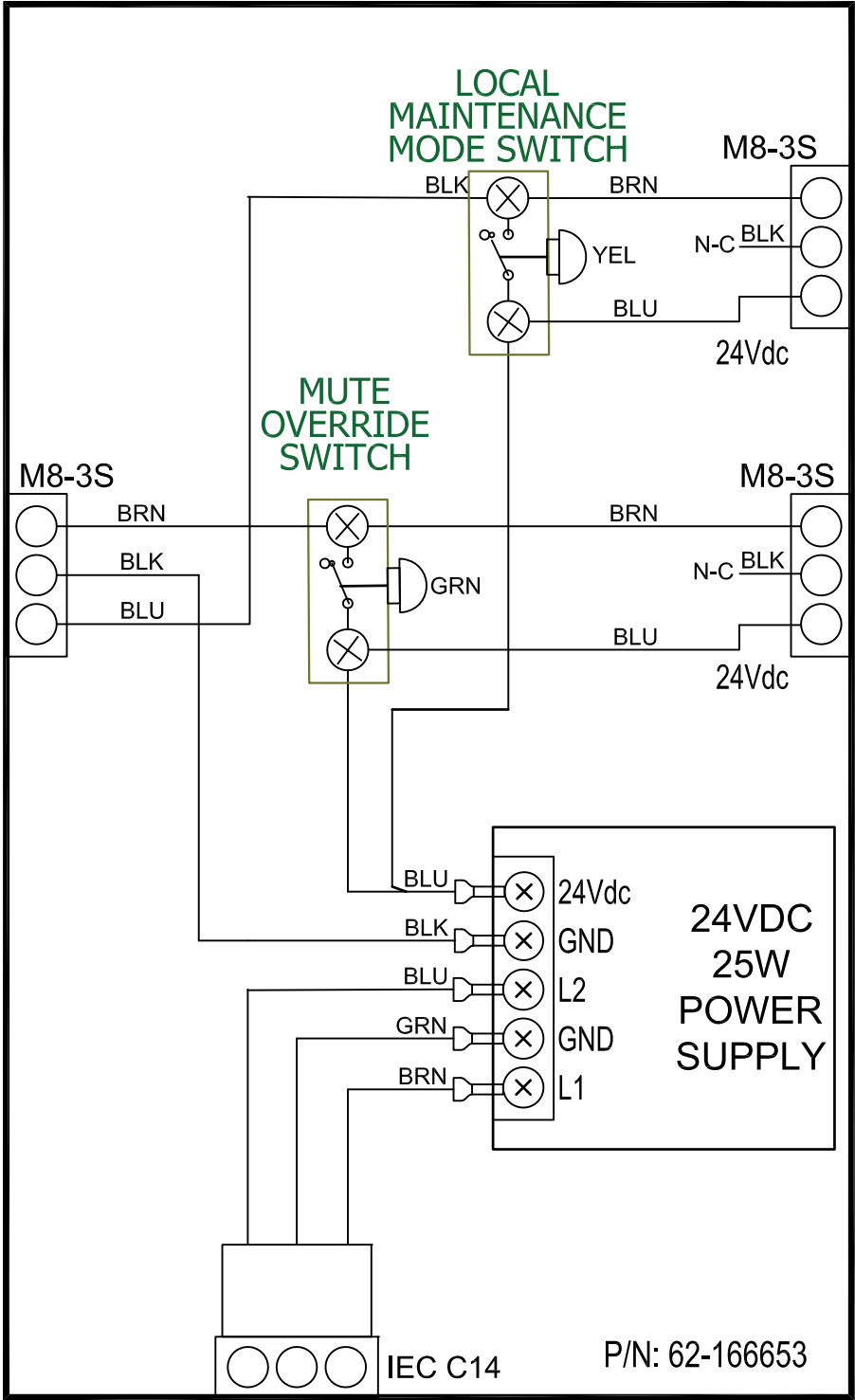
VER	DCO	DESCRIPTION	DATE	BY
A 01	N-A	MOVE TO PROTOTYPE	10/30/2019	JWM

D

C

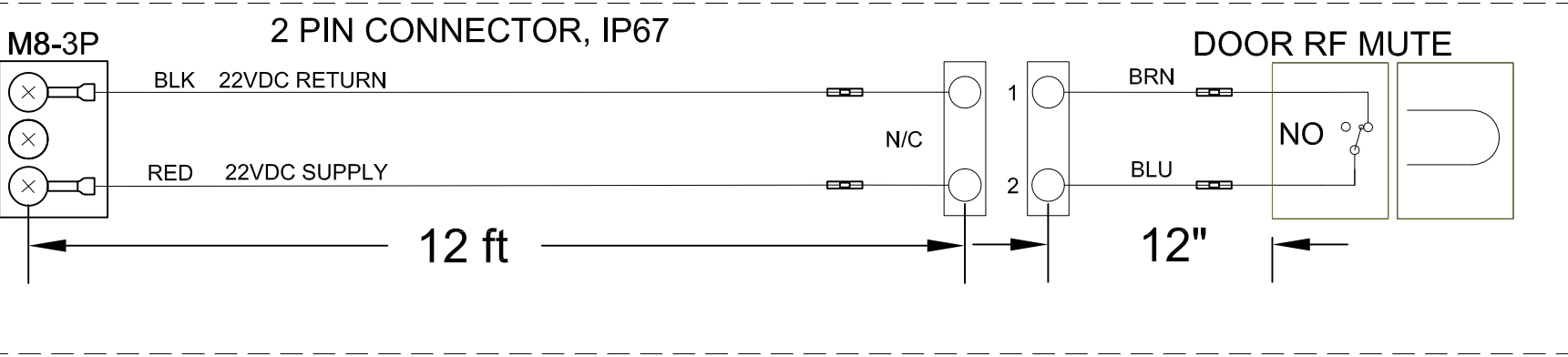
B

A



DOOR MUTE SENSOR KIT

P/N: 62-164608



D

C

B

A

DRAWN BY: JWM		<b>COBHAM</b> Sea Tel, Inc., dba Cobham SATCOM, Concord Tel. 925-798-7979 Fax. 925-798-7986	
DRAWN DATE: 10/30/2019			
APPROVED BY:		TITLE:  SCHEMATIC, DOOR MUTE SENSOR CIRCUIT	
APPROVED DATE:			
SIZE B	SCALE: N/A	DRAWING NUMBER 93-164608-A	VER 01
FIRST USED: GLOBALSTAR		SHEET NUMBER	1 OF 1

## ORACLE BOM Explosion Report

**Item Number:** 62-165834  
**Description:** REMOTE E STOP ASSY, IP66, SPST-NC  
**Item Revision:** A.01 MCO-00049369  
**Date as of:** 07/09/2020 11:46:54 AM PDT

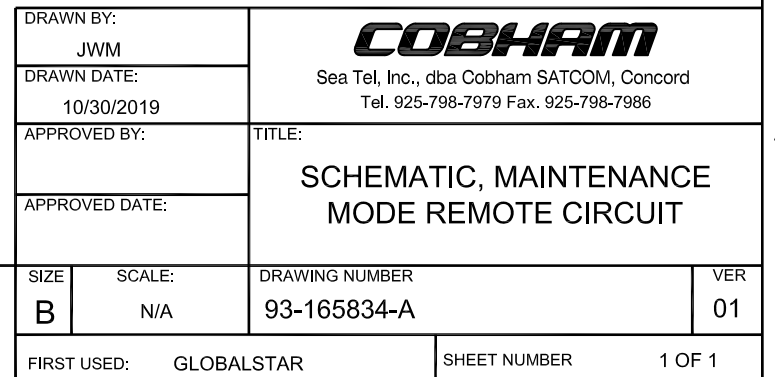
Find Num	Qty	Inventory Unit (LN6)	Number	Rev	Description / Title	BOM Notes
0	1	pcs	93-165834	A MCO-00049343	SCHEMATIC: MAINTENANCE MODE REMOTE CIRCUIT	
1	1	pcs	33-207259-000	MCO-00041254	E-STOP ENCLOSURE SUB ASSY, SPST-NC	
2	1	ea	109258-10	MCO-00047507	RELIEF, STRAIN	
3	1	ea	131302-1	MCO-00012114	LOCKNUT, CONDUIT, 1/2", SEALING	
4	15.2	ft	102105	MCO-00012597	CABLE 2 COND W/SHIELD 22 AWG	
5	4	ea	121899-22	MCO-00034863	WIRE PIN TERMINAL, CRIMP, 22 AWG, TRQS	
6	1	ea	31-207786-010	MCO-00045961	FIELD CONNECTOR, M8-3P, SCREW TERMINALS	
		pcs	62-165834	A.01 MCO-00049369	REMOTE E STOP ASSY, IP66, SPST-NC	

**Created By:** Mike Needham  
**Create Time:** 07/09/2020 11:47:16 AM PDT

1. TERMINATE ALL WIRE WITH PIN TERMINALS BEFORE INSTALLING INTO TERMINAL BLOCKS USING TOOL 90143 FROM WEIDMULLER.
2. TERMINATE ALL WIRE WITH RIGHT ANGLE QUICK TERMINALS BEFORE CONNECTING TO SNAP IN OUTLET USING TOOL 118629 FROM MORRIS TOOLS CAT # 5448.
3. TERMINATE ALL WIRE WITH RING TERMINALS BEFORE CONNECTING TO CIRCUIT BREAKERS USING TOOL 30-502 FROM IDEAL.

Sea Tel - Strictly Confidential & Proprietary.  
Do Not Copy, Distribute or Disclose Without Prior  
Written Approval From Sea Tel.

Copyright © Sea Tel, Inc 2011 – Unpublished Work



# ORACLE BOM Explosion Report

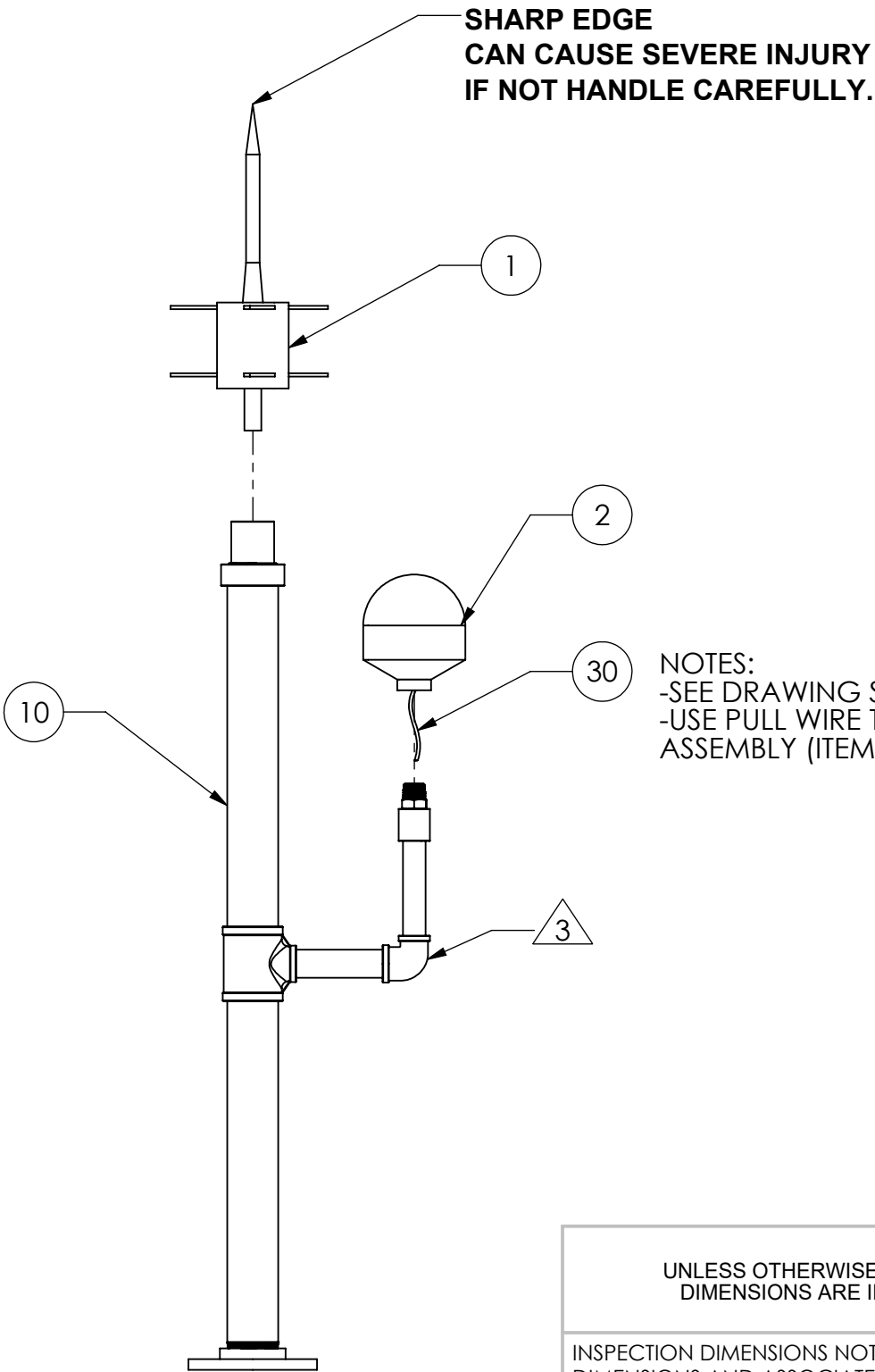
**Item Number:** 62-171768  
**Description:** KIT, OBSTRUCTION LIGHT AND LIGHTNING DIVERTER  
**Item Revision:** A.03 MCO-00049240  
**Date as of:** 07/09/2020 11:46:54 AM PDT

Find Num	Qty	Inventory Unit (LN6)	Number	Rev	Description / Title	BOM Notes
0	REF	ea	97-171768	A MCO-00049240	ASSY DRAWING, HAZARD LIGHT & LIGHTNING DIVERTER	
1	1	ea	41-207819-000	MCO-00047855	LIGHTNING ROD	
2	1	pcs	31-207994-000	MCO-00047639	OBSTRUCTION LIGHT, RED LED, FL810, 110-240VAC	
10	1	ea	62-172045	A.03 ECO-00036603	TUBING ASSY, LIGHTNING PROTECTION, T6000	
30	40	ft	32-207230-000	MCO-00047659	CABLE, 2 COND, 18 AWG, .75MM, BRN/BLU, PVC	
31	120	ft	32-207229-000	MCO-00047659	WIRE, 2 AWG, 600V, ULTRA FLEXIBLE, BLK EDPM JACKET	
40	REF	ea	48-207483-000	MCO-00046423	LUBRICANT, ELETRICAL CONTACT, CONDUCTIVE	
41	6	ea	31-207995-000	MCO-00047654	CABLE LUG, COMPRESSION, 2 AWG, 1 3/8 HOLE	
42	4	ea	121899-18	MCO-00012115	WIRE PIN TERMINAL, CRIMP, 18 AWG, RED	
43	90	ea	45-207281-000	MCO-00047796	LOOP CLAMP, 1/2" ID, 13/32" MOUNTING HOLE DIA.	
50	4	ea	114586-626	MCO-00037691	SCREW, HEX HD, 3/8-16 x 1-1/2, SS.	
58	8	ea	114580-032	MCO-00012113	WASHER, FLAT, 3/8, SS. (1 OD X 13/32 ID)	
59	4	ea	114583-031	MCO-00012113	NUT, HEX, 3/8-16, SS.	
60	90	ea	51-207565-000	MCO-00047881	SCREW, HEX HD, M8 X 40, SS	
68	180	ea	131552-160	MCO-00012114	WASHER, FENDER, M8, 18-8 SS. (24MM OD)	
69	90	ea	120089-410	MCO-00012113	NUT, HEX, M8, SS.	
		pcs	62-171768	A.03 MCO-00049240	KIT, OBSTRUCTION LIGHT AND LIGHTNING DIVERTER	

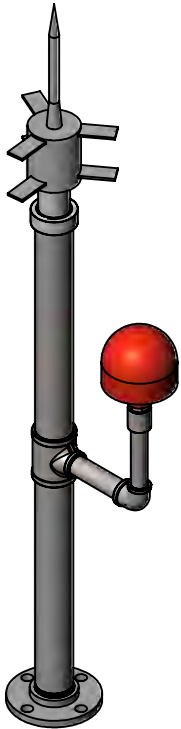
**Created By:** Mike Needham  
**Create Time:** 07/09/2020 11:47:16 AM PDT

CONDUCTIVE LUBRICANT, 48-207483-000 (ITEM-40 OF BOM 62-171768) SHOULD BE APPLIED BETWEEN ALL THREADS

REVISION HISTORY				
REV	ECO	DATE	DESCRIPTION	BY
XXXX	XXXX	XXXXX	DESCRIPTION	XXXX



NOTES:  
-SEE DRAWING SHEET 2,3 &4 FOR WIRING INSTRUCTIONS  
-USE PULL WIRE THAT CAME ALONG WITH TUBING ASSEMBLY (ITEM-10) TO ROUTE OBSTURCTION LIGHT CABLE.



NOTES: UNLESS OTHERWISE SPECIFIED  
1. MANUFACTURE PER SEATEL STANDARD 99-122298.  
2. THIS DRAWING GOVERNS THE ASSEMBLY OF ALL VARIANTS OF THE PART NUMBER 62-171768, REGARDLESS OF ASSEMBLY OR DRAWING REVISION. SOME ITEMS SHOWN ON THIS DRAWING MAY NOT BE INCLUDED ON THE BILL OF MATERIAL, OR MAY APPEAR IN A DIFFERENT ORIENTATION THAN THE DRAWING DEPICTS FOR SOME VARIANTS. REFER TO THE BILL OF MATERIALS FOR THE VARIANT NUMBER SHOWN ON THE WORK ORDER.  
CHECK ELBOW IS FACING UPWARDS BEFORE MOUNTING LIGHT (ITEM-2)

UNLESS OTHERWISE SPECIFIED DIMENSIONS ARE IN INCHES.  X.X = ±.050 X.XX = ±.020 X.XXX = ±.005 ANGLES: ±.5°  INSPECTION DIMENSIONS NOTED BY (X.X) SHALL HAVE FEATURE SIZE DIMENSIONS AND ASSOCIATED GD&T TOLERANCES INSPECTED  INTERPRET TOLERANCING PER ASME Y14.5 - 2009  Sea Tel - Strictly Confidential & Proprietary. Do Not Copy, Distribute or Disclose Without Prior Written Approval From Sea Tel.  Copyright © Sea Tel, Inc 2011 - Unpublished Work	DESIGNER/ENGINEER: MS	DRAWN BY: MS	<b>COBHAM</b> Sea Tel, Inc., dba Cobham SATCOM, Concord Tel. 925-798-7979 Fax. 925-798-7986	
	WEIGHT: 26.0 lbs	DRAWN DATE: 03/11/2020		
	MATERIAL: N/A	APPROVED BY:	TITLE: <b>ASSY DWG, HAZARD LIGHT AND LIGHTNING DIVERTER</b>	
	FINISH: N/A	APPROVED DATE:		
<div>3rd ANGLE PROJECTION</div>	SURFACE ROUGHNESS:	SIZE B	SCALE: 1:8	DRAWING NUMBER 97-171768
		FIRST USED: T6000	SHEET NUMBER 1 OF 4	REV A



## Unpacking, Installation, Wiring & Setup

### Unpacking

Unpack all hardware and inspect for damage. If there is any damage, please contact your Avlite Office. Retain original packing material for possible future use in shipping.

### Installation & Wiring

Before proceeding with installation or service, make sure the following conditions are met:

- Ensure the tower or mast is grounded (NO RF HAZARD)
- Check the mast lighting circuit is not faulty
- Ensure power lines are not 'live' (NO ELECTRICAL HAZARD)
- Avoid touching live circuits!
- Avoid touching any component or any part of the circuitry while the unit is operating. Do not change components or make adjustments inside the unit with power on.

Open the Obstruction Light as described. Guide the cable through the cable gland and mount the bottom half of the Obstruction Light on a mounting pole using the inner thread.

#### NOTE:

- Make sure the mounting pole is vertically aligned to guarantee the required beam pattern of the obstruction light.
- Make sure the light's beam pattern is not disturbed by any nearby obstacles.

Shorten the cable and close/seal the cable gland.

With the unit open, observe the rear of the PCB mounted in the top half of the Obstruction Light for terminal blocks and switch settings.

NOTE: Use cable in compliance with the effective local electrical code. The cable outer diameter should be between 5mm and 10mm.

NOTE: There is no requirement to terminate the relay and/or the serial communication if not used.

Latest products and information available at [www.avlite.com](http://www.avlite.com)

REFERENCE: AVLITE  
(UNIVERSAL AC LOW INTENSITY OBSTRUCTION  
LIGHT INSTALLATION AND SERVICE MANUAL)

### OPENING & CLOSING THE LIGHT HEAD

- Remove the locking screw
- In order to open the unit, the top half of the unit should be turned anti-clockwise with respect to the bottom half. The top half will turn approximately 20mm over a positive 'click' before separating from the bottom half. Attention should be paid to the restriction caused by the internal cabling which is secured by a cable gland.
- The unit is closed by reversing the above procedure, ensuring the black rubber O-ring remains in place.



Figure 1. Obstruction Light

### AC POWER CONNECTION (BLACK TERMINAL)

The unit is designed to operate from a nominal AC voltage from 110VAC-240VAC.

Wired as follows (according to Australian Standard):

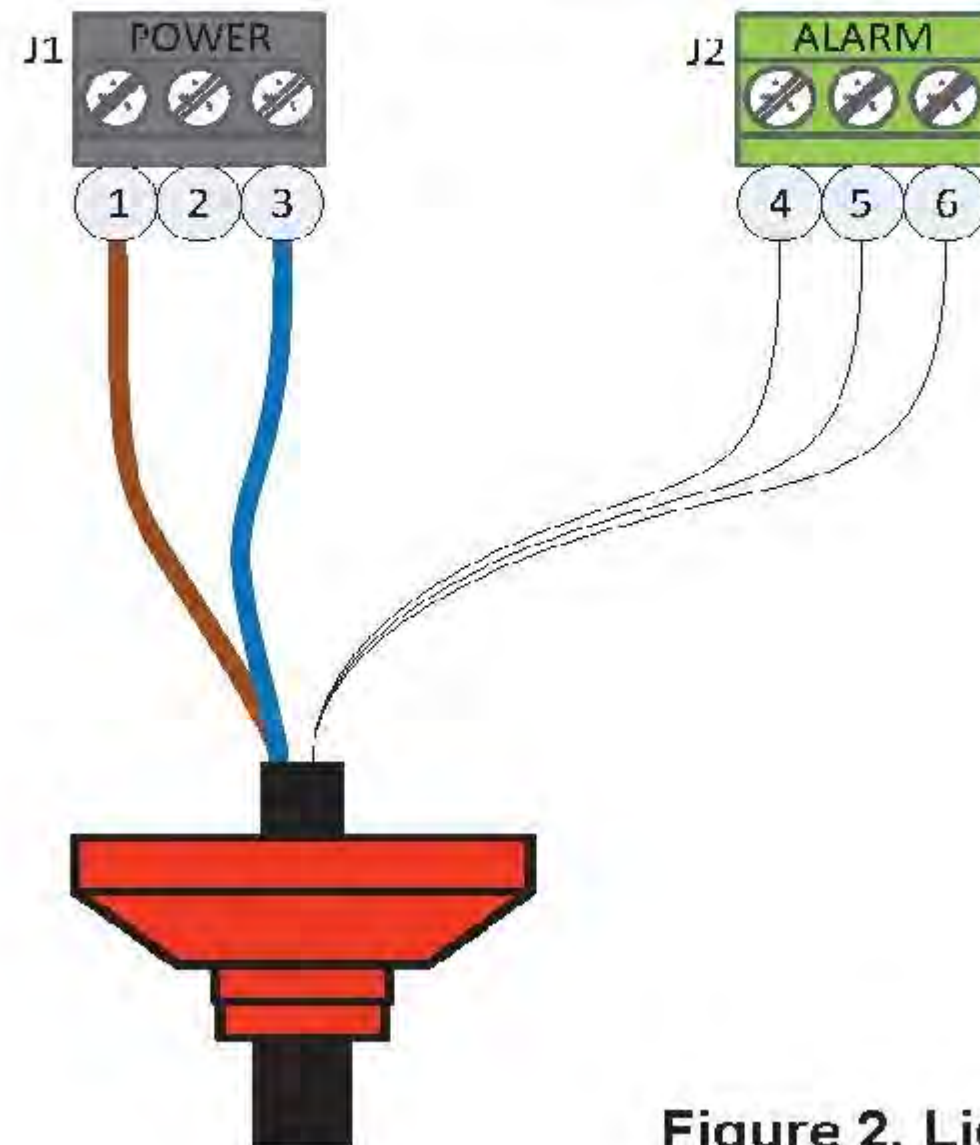
- L1 (brown) = Line/Active
- L2 (blue) = Neutral

For location details of the terminals please refer to Figure 3.

Latest products and information available at [www.avlite.com](http://www.avlite.com)

SIZE	SCALE:	DRAWING NUMBER	REV
B	1:12	97-171768	A
		SHEET NUMBER	2 OF 4

# Universal AC Low Intensity Obstruction Light Single Light Fixture



NO.	CONNECTOR	SIGNAL
1	110-240VAC	L1 - LINE
2	110-240VAC	NC
3	110-240VAC	L2 - NEUT
4	ALARM	COMM
5	ALARM	NO
6	ALARM	NC

**Figure 2. Light wiring diagram and pinning**

REFERENCE: AVLITE  
(UNIVERSAL AC LOW INTENSITY OBSTRUCTION LIGHT INSTALLATION AND SERVICE MANUAL)

SIZE	SCALE:	DRAWING NUMBER	REV
B	1:12	97-171768	A
		SHEET NUMBER	3 OF 4



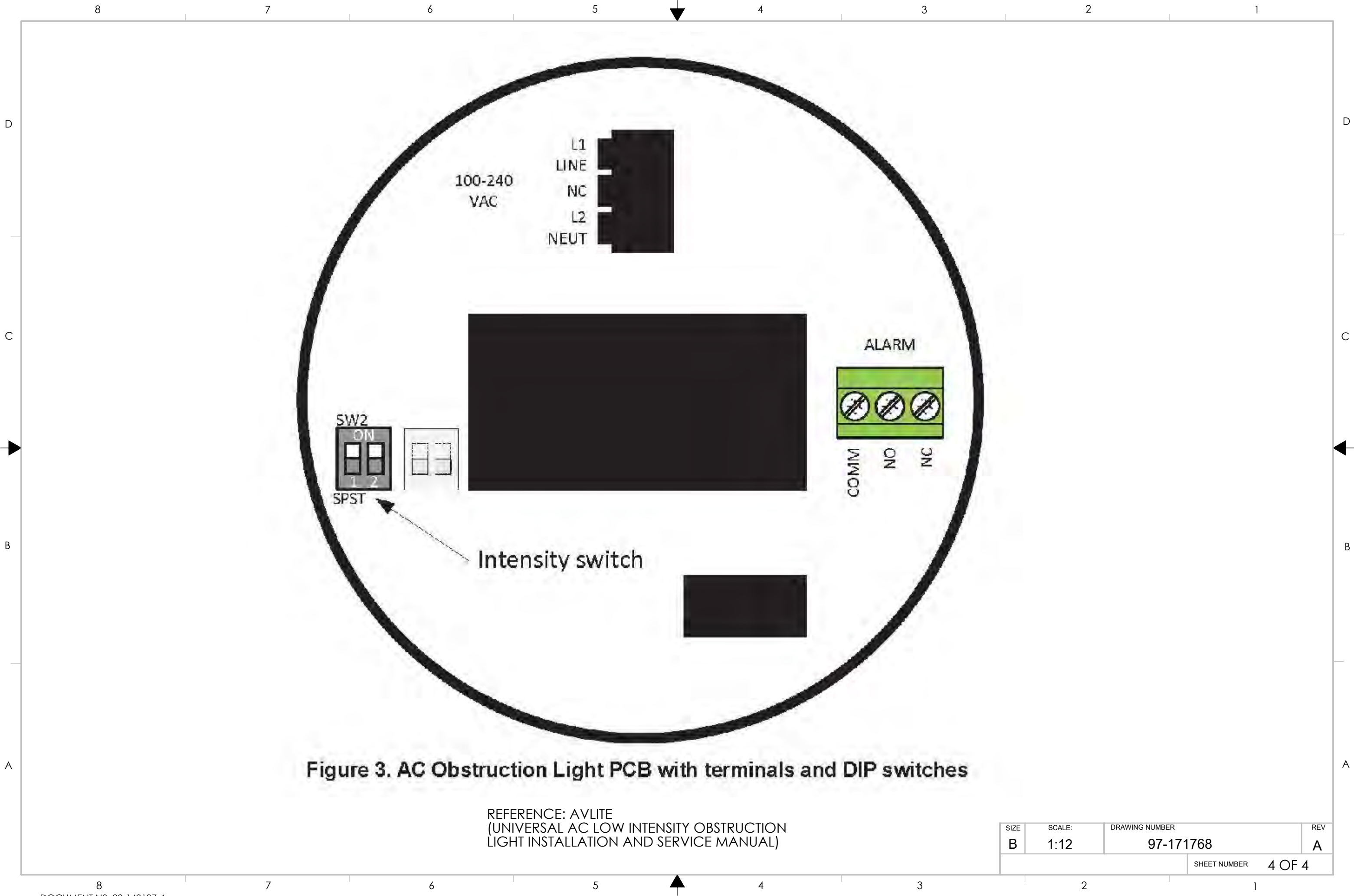


Figure 3. AC Obstruction Light PCB with terminals and DIP switches

REFERENCE: AVLITE  
(UNIVERSAL AC LOW INTENSITY OBSTRUCTION  
LIGHT INSTALLATION AND SERVICE MANUAL)

SIZE	SCALE:	DRAWING NUMBER	REV
B	1:12	97-171768	A
		SHEET NUMBER	4 OF 4

## ORACLE BOM Explosion Report

**Item Number:** 62-156979  
**Description:** KIT, SNOW ROPE ASSEMBLY  
**Item Revision:** A MCO-00049240  
**Date as of:** 07/09/2020 11:46:54 AM PDT

Find Num	Qty	Inventory Unit (LN6)	Number	Rev	Description / Title	BOM Notes
0	1		97-156979-A	A DCO-00023211	SNOW ROPE INSTALLATION INSTRUCTIONS	
1	1	pcs	41-207543-025	MCO-00046181	ROPE, 0.25 IN X 100 FT, POLYESTER, WHITE	
2	2	ea	134254	MCO-00012114	BAR, RUBBER	
		pcs	62-156979	A MCO-00049240	KIT, SNOW ROPE ASSEMBLY	

**Created By:** Mike Needham  
**Create Time:** 07/09/2020 11:47:16 AM PDT

**COBHAM**

# File: 97-156979-A - Tracker 4000 Installation Notes - SNOW ROPE

The most important thing we build is trust



DATE: Friday, October 13th, 2017

AUTHOR: Adrian Nicholas      Rev: Released

# SNOW ROPE INSTALLATION

**SUMMARY:** System operation is expected to generate enough heat to prevent snow settling, on the radome, however during periods of unusually heavy snow and/or inoperation, enough snow may accumulate to impact system performance, hence the need for a snow rope.

Solution is simply a clothes line, looped around the lightning diverter. A clothes line is thin enough to get under most of the snow, to loosen it, and should be durable, as they are intended to be left out in all weathers.

**INITIAL INSTALLATION:** Cobham snow rope assembly 62-156979 includes a rope and a pair of rubber blocks with enough weight to carry the rope over the top of the radome, (resilient weights protect the radome surface from damage).

**SERVICE REPLACEMENT:** We recommend replacing the snow rope at the first signs of visible wear. Provided the rope is unbroken, you may use the existing rope to pull the new rope over the top, otherwise, weighting of the line is necessary to help carry it over the top of the radome\*.

\*Weights used must be either be resilient, or padded, to protect the radome from damage.

Fig 1: End weighted with resilient blocks, to prevent radome damage.



Fig 2: Installation overview.

