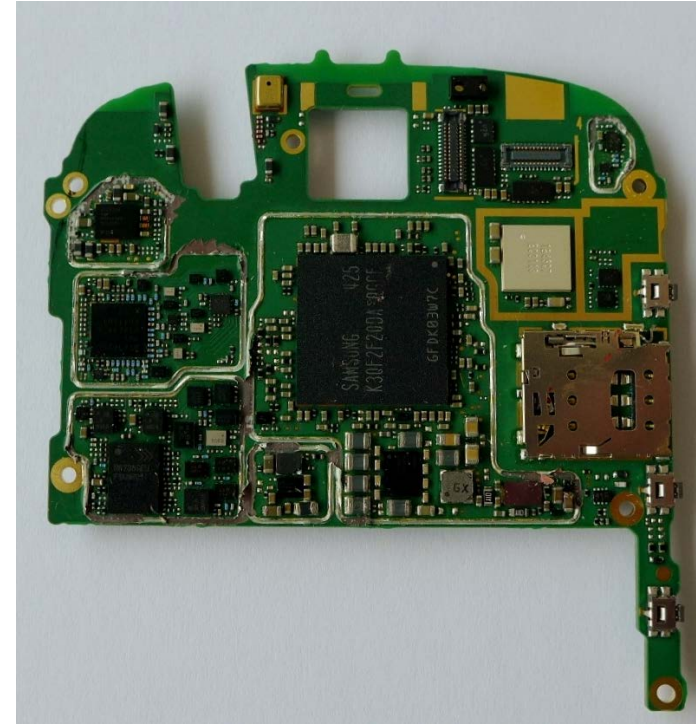
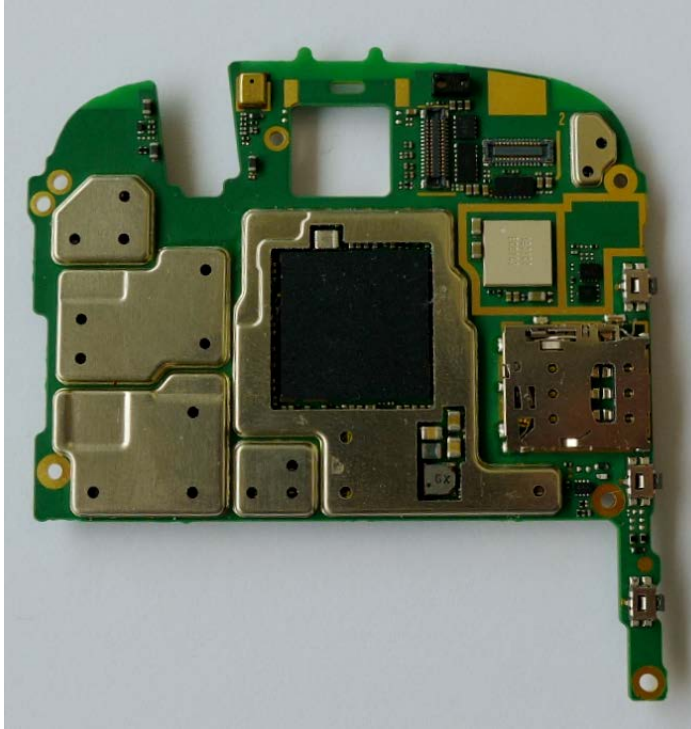


Exploded View

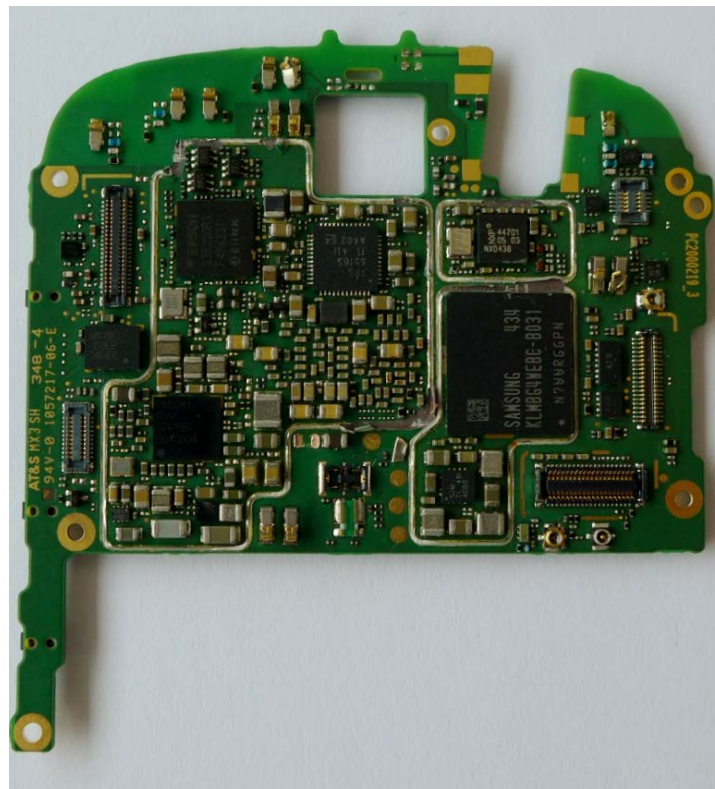
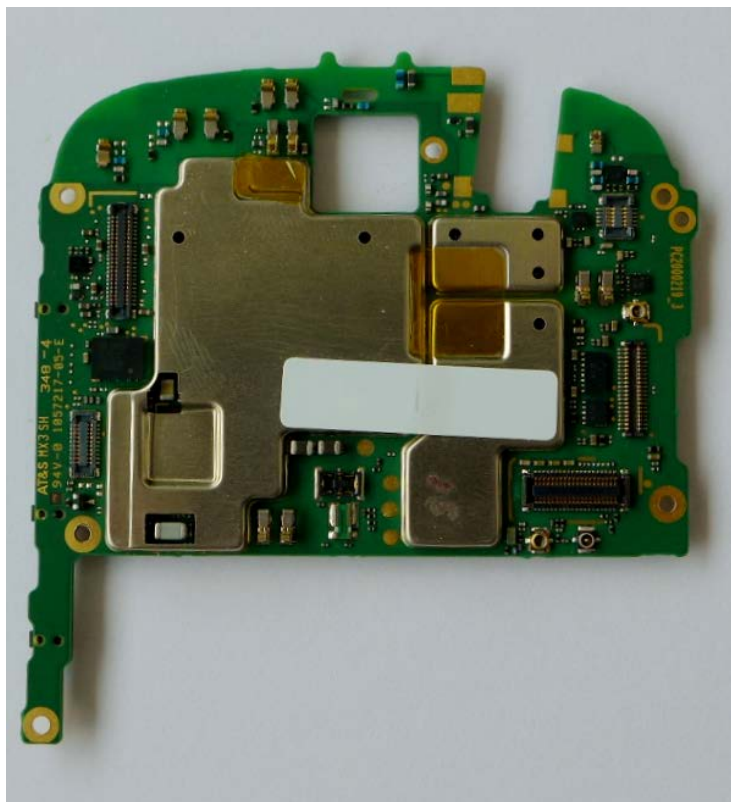


Top Side Main PCB



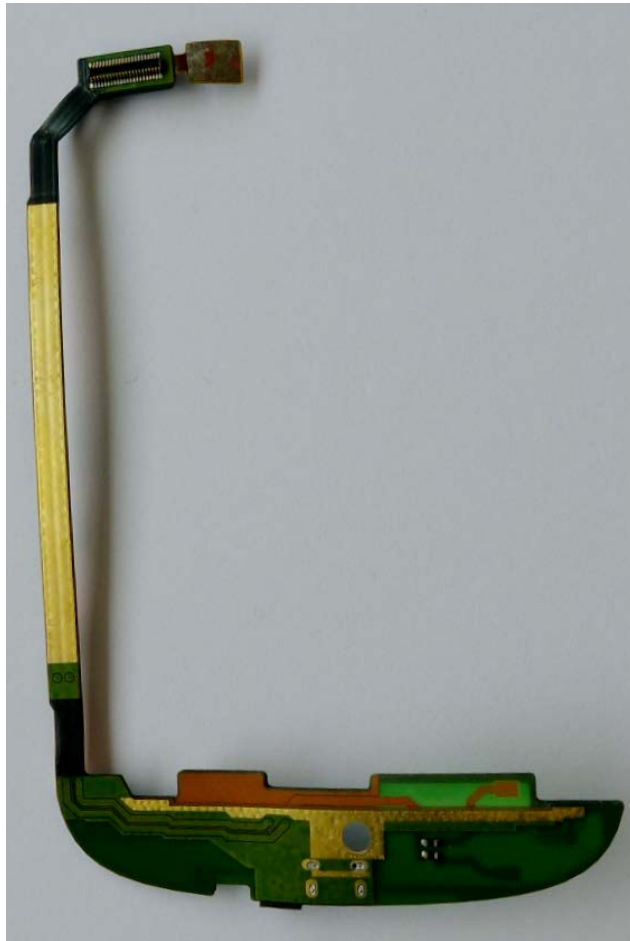
Shields removed

Bottom Side Main PCB

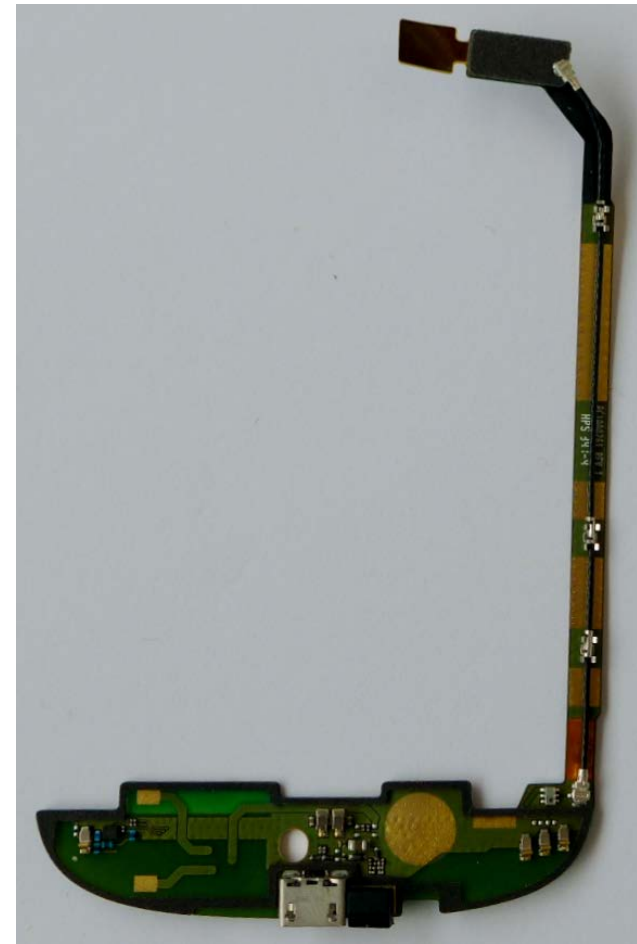


Shields removed

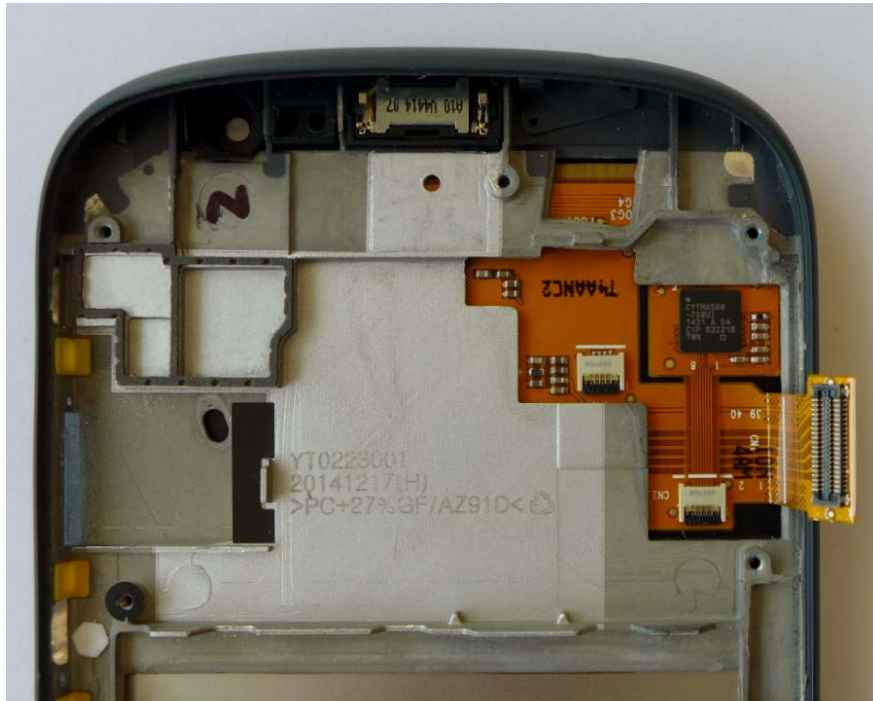
Top Side Bottom PCB



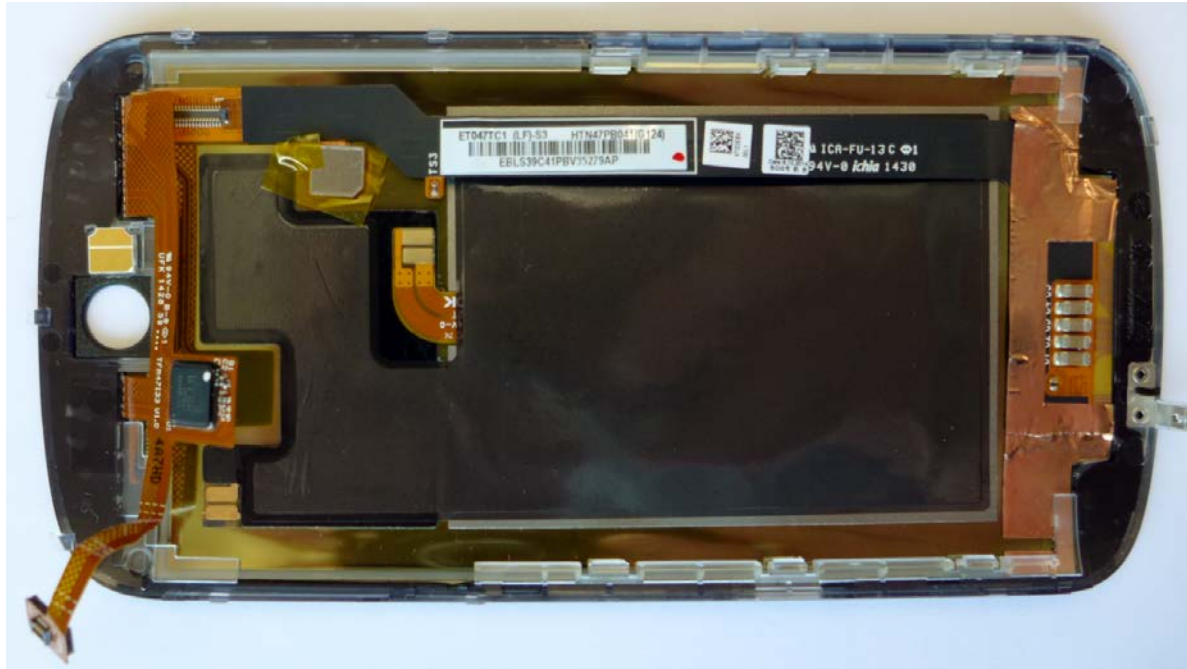
Bottom Side Bottom PCB



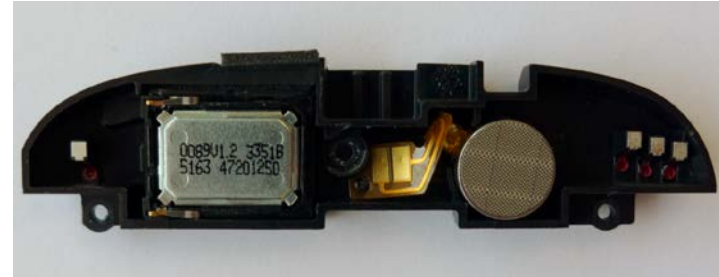
Front display components attached to the flex. Flex can't be removed. No removable shields



Electronic paper back display. No PCB and no removable shields



Lower antenna carrier, both sides



Upper antenna carrier, both sides

