

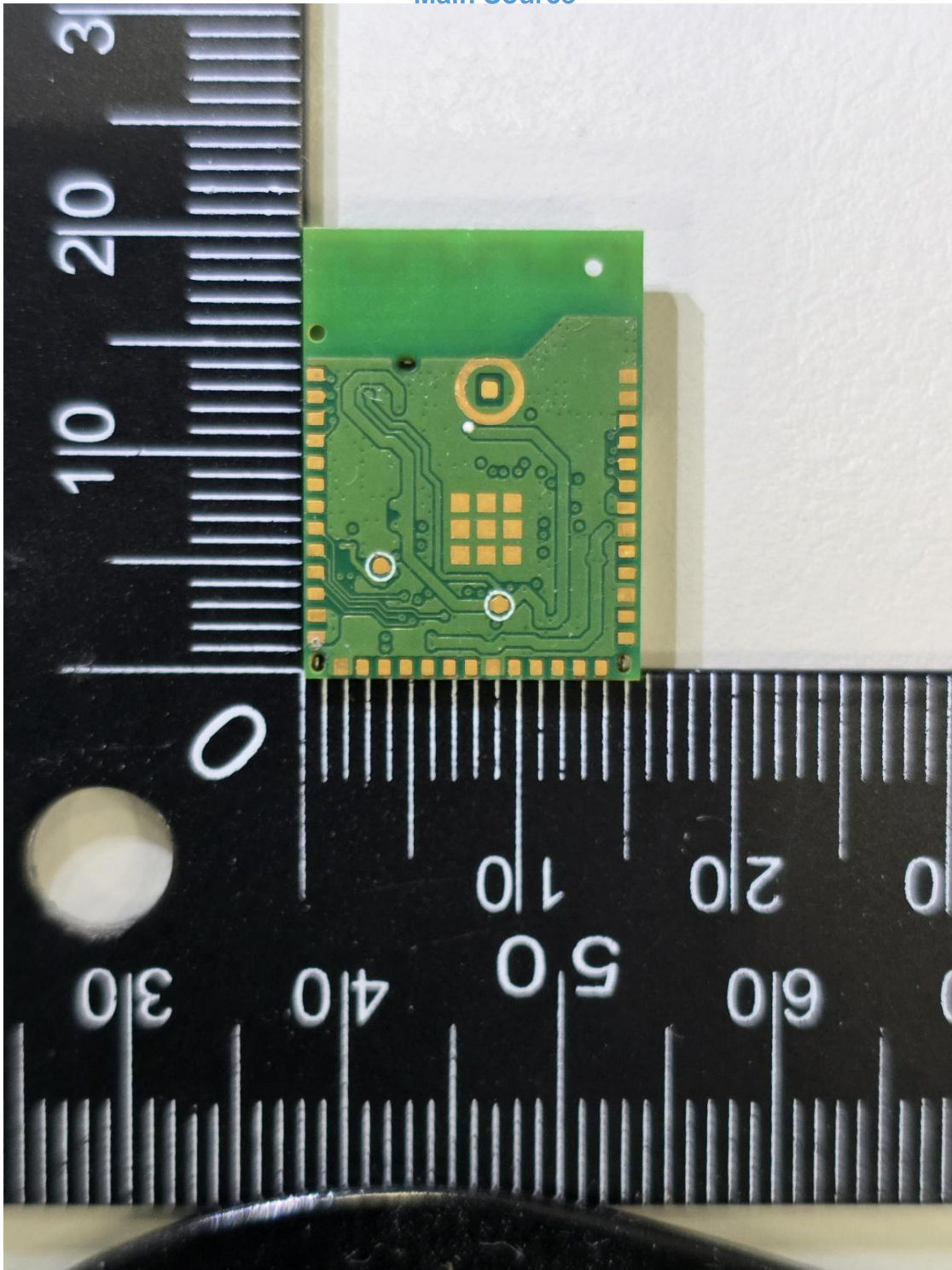
CN24BP3U 001
CN24IHAS 001
CN248T1X 001
CN24SC0S 001
CN24XFE7 001
CN24HV1Z 001

Page 2 of 14

Product: Wireless MCU module with BLE 5.2 compliant and Zigbee 3.0 Radio

Type Identification: WBZ451PE-E

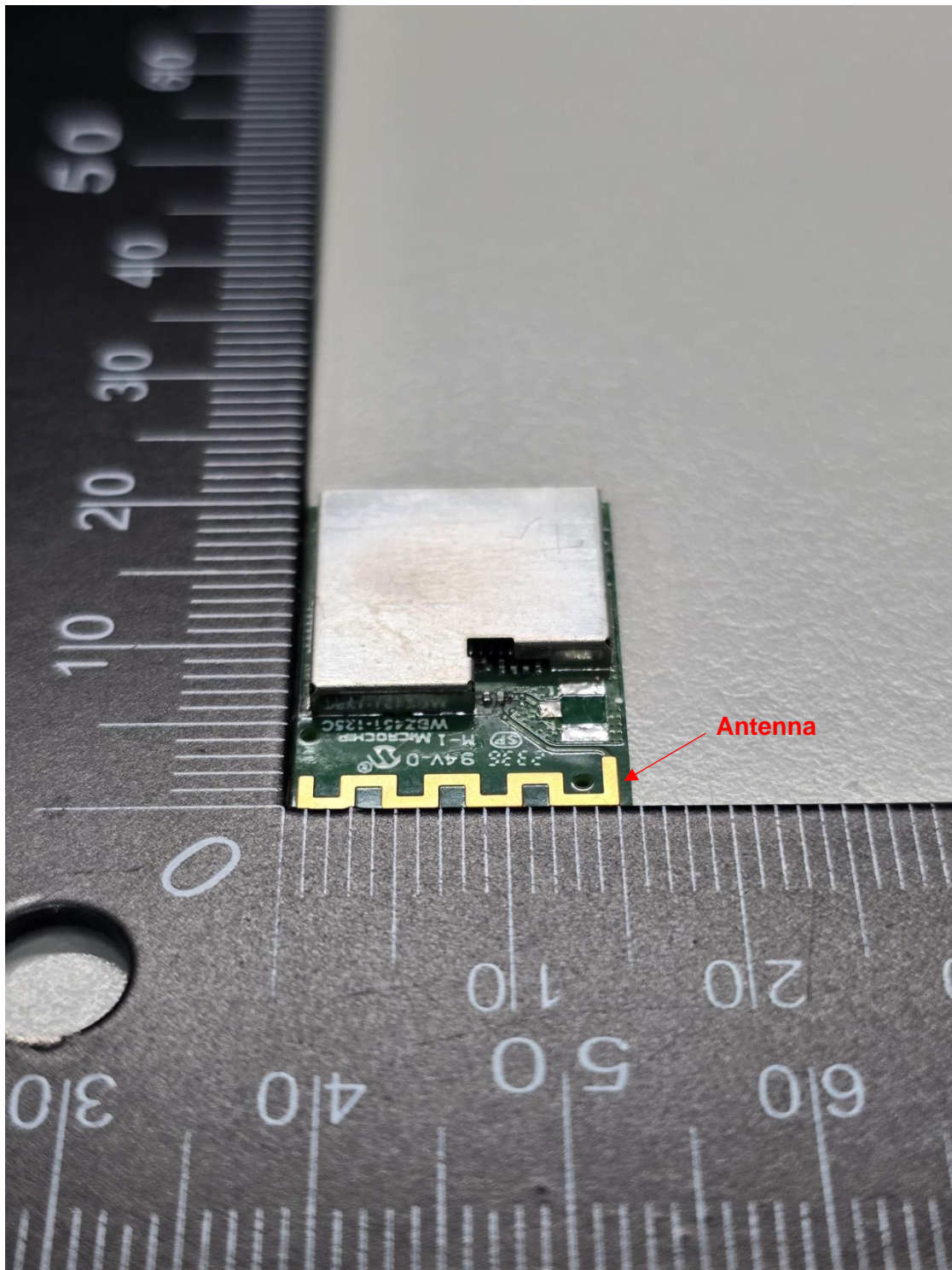
[Main Source](#)



CN24BP3U 001
CN24IHAS 001
CN248T1X 001
CN24SC0S 001
CN24XFE7 001
CN24HV1Z 001

Page 3 of 14

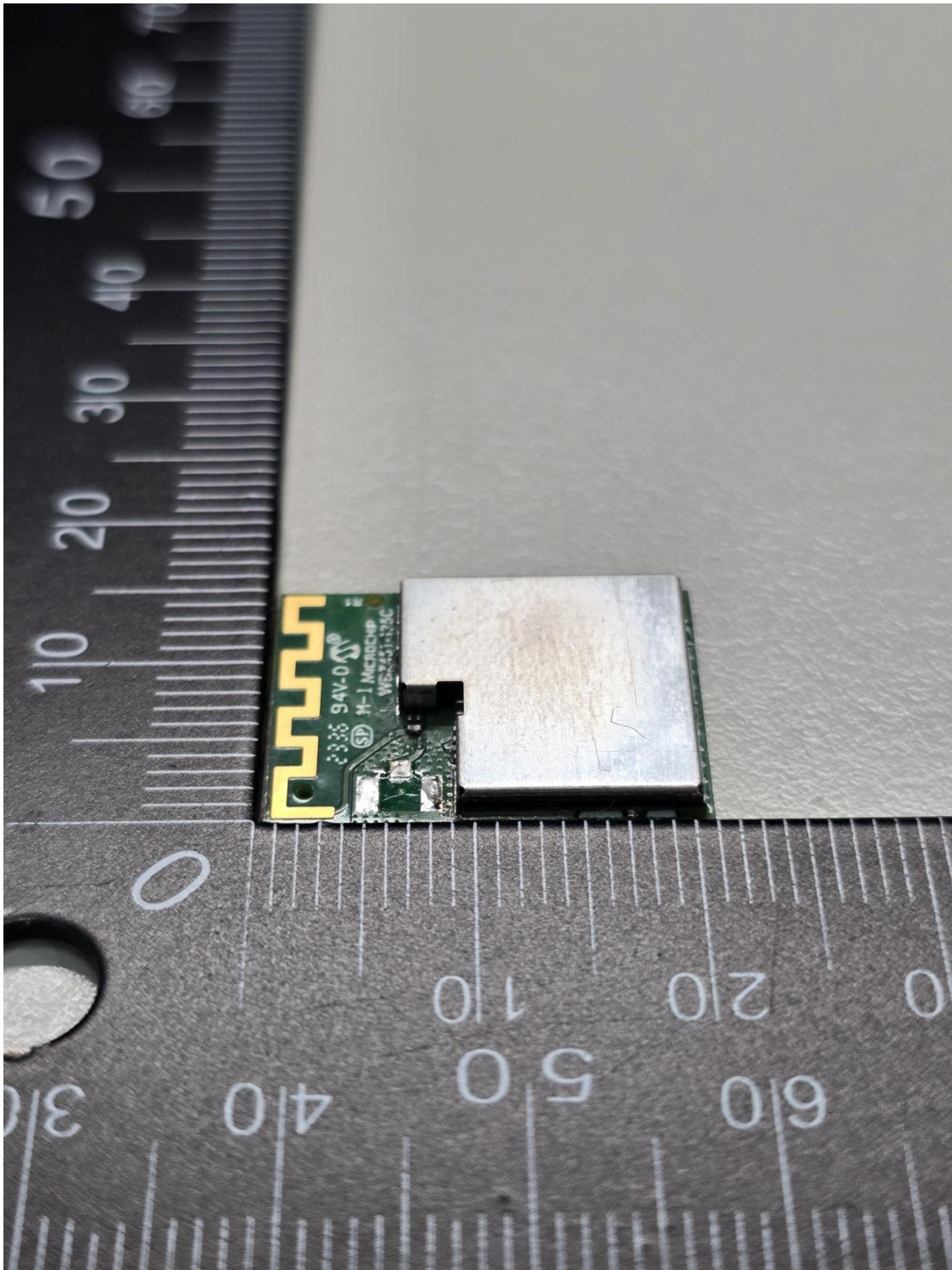
Product: Wireless MCU module with BLE 5.2 compliant and Zigbee 3.0 Radio
Type Identification: WBZ451PE-E



CN24BP3U 001
CN24IHAS 001
CN248T1X 001
CN24SC0S 001
CN24XFE7 001
CN24HV1Z 001

Page 4 of 14

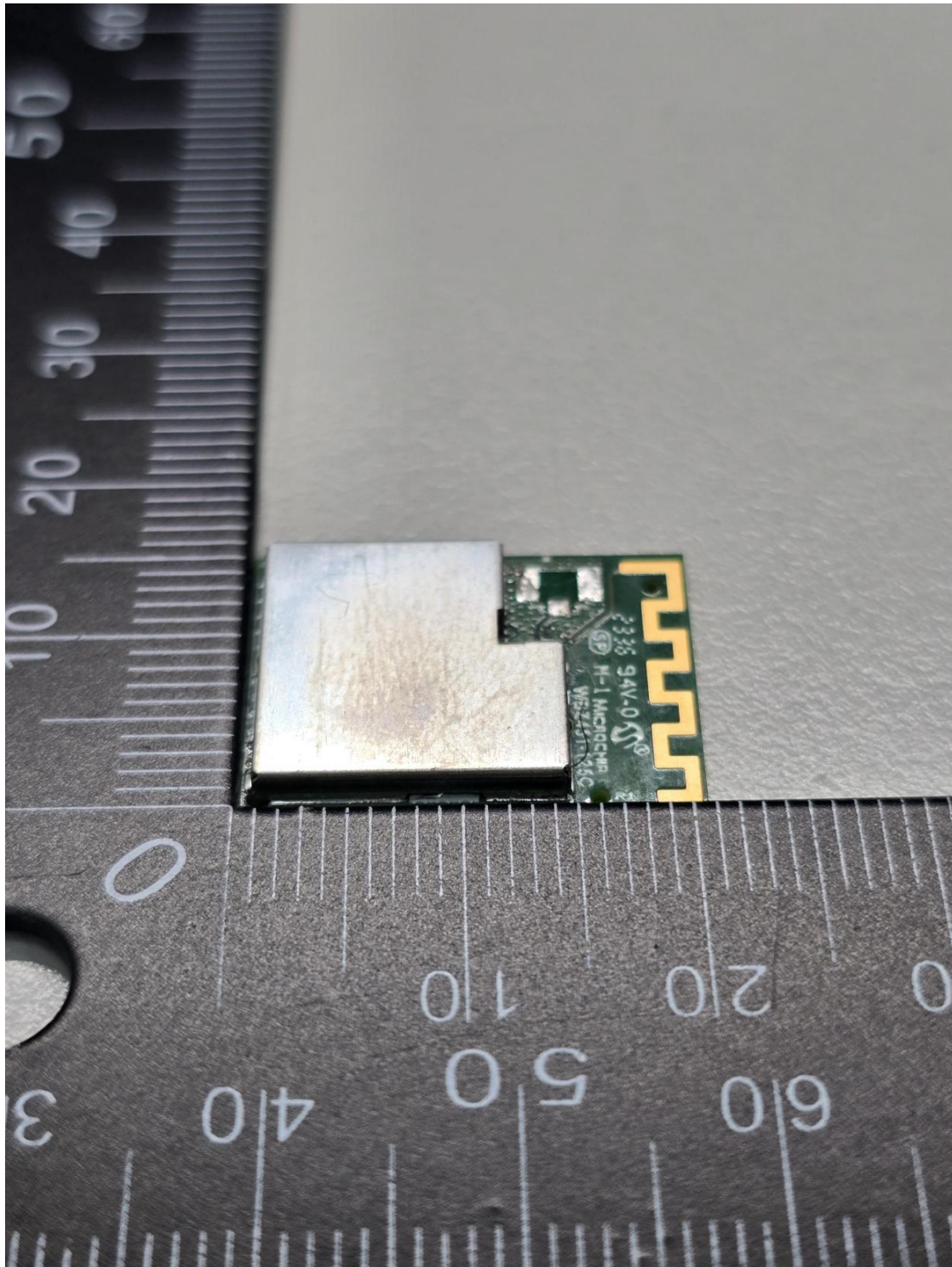
Product: Wireless MCU module with BLE 5.2 compliant and Zigbee 3.0 Radio
Type Identification: WBZ451PE-E



CN24BP3U 001
CN24IHAS 001
CN248T1X 001
CN24SC0S 001
CN24XFE7 001
CN24HV1Z 001

Page 5 of 14

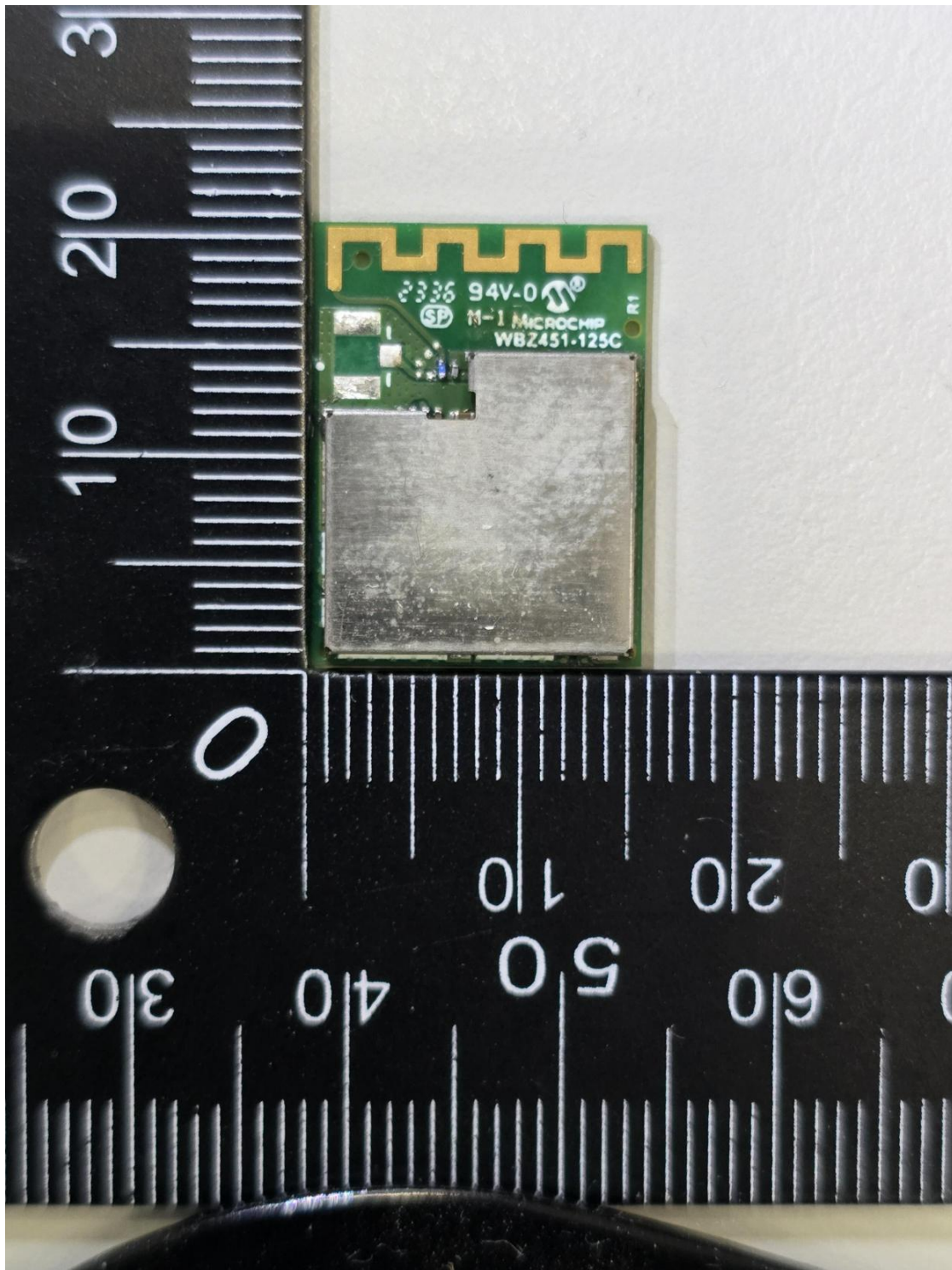
Product: Wireless MCU module with BLE 5.2 compliant and Zigbee 3.0 Radio
Type Identification: WBZ451PE-E



CN24BP3U 001
CN24IHAS 001
CN248T1X 001
CN24SC0S 001
CN24XFE7 001
CN24HV1Z 001

Page 6 of 14

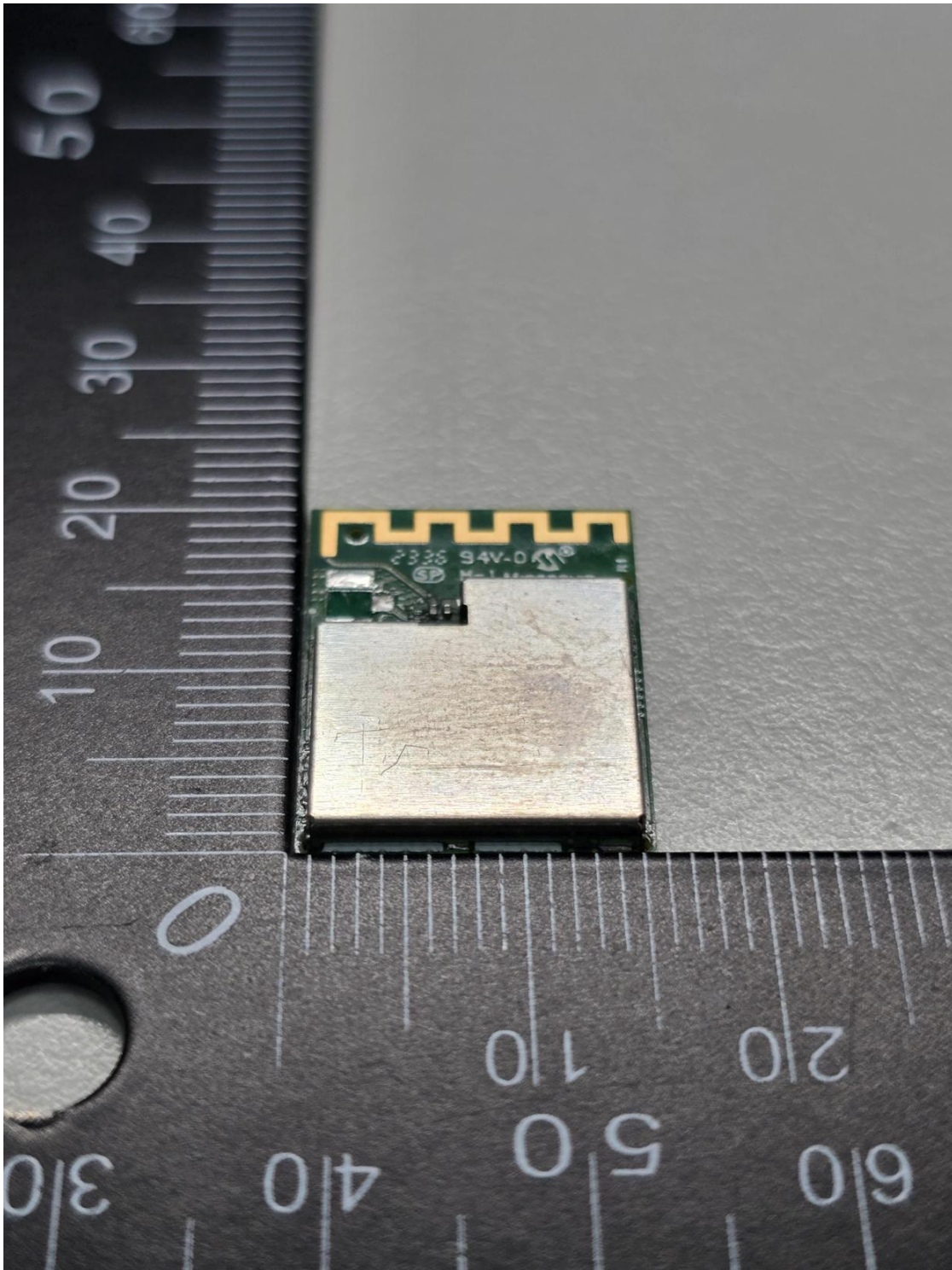
Product: Wireless MCU module with BLE 5.2 compliant and Zigbee 3.0 Radio
Type Identification: WBZ451PE-E



CN24BP3U 001
CN24IHAS 001
CN248T1X 001
CN24SC0S 001
CN24XFE7 001
CN24HV1Z 001

Page 7 of 14

Product: Wireless MCU module with BLE 5.2 compliant and Zigbee 3.0 Radio
Type Identification: WBZ451PE-E



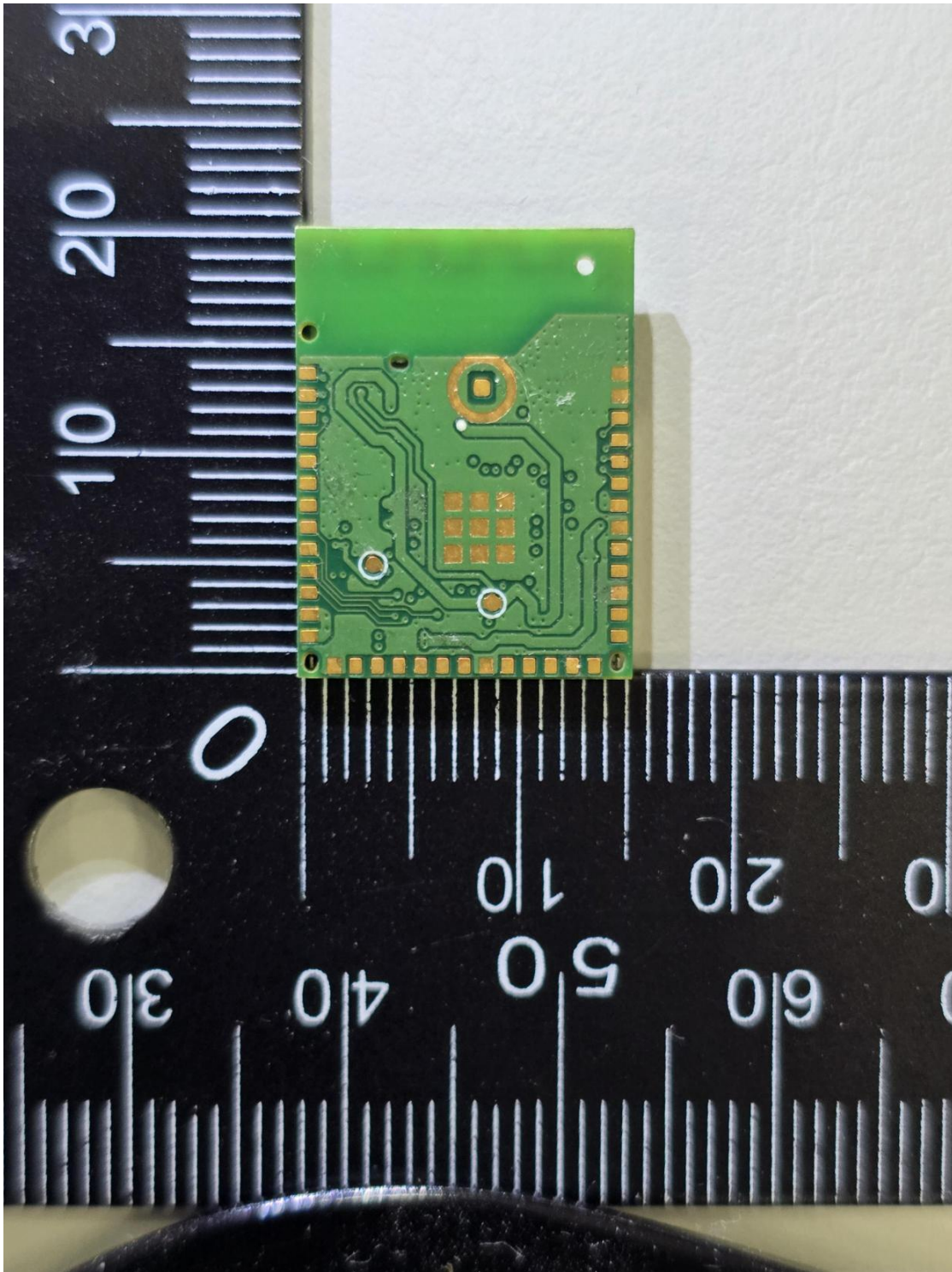
CN24BP3U 001
CN24IHAS 001
CN248T1X 001
CN24SC0S 001
CN24XFE7 001
CN24HV1Z 001

Page 9 of 14

Product: Wireless MCU module with BLE 5.2 compliant and Zigbee 3.0 Radio

Type Identification: WBZ451PE-E

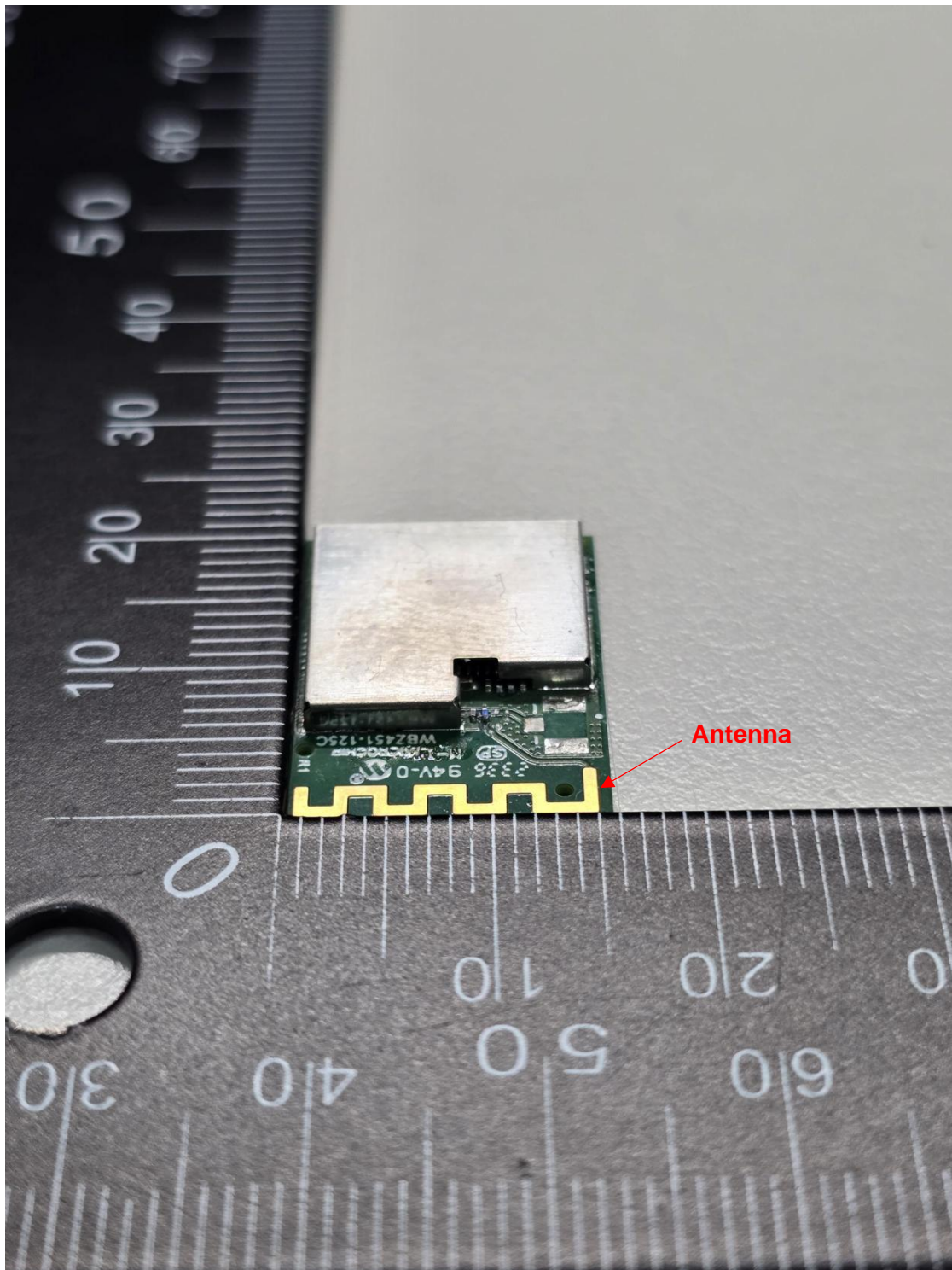
2nd Source



CN24BP3U 001
CN24IHAS 001
CN248T1X 001
CN24SC0S 001
CN24XFE7 001
CN24HV1Z 001

Page 10 of 14

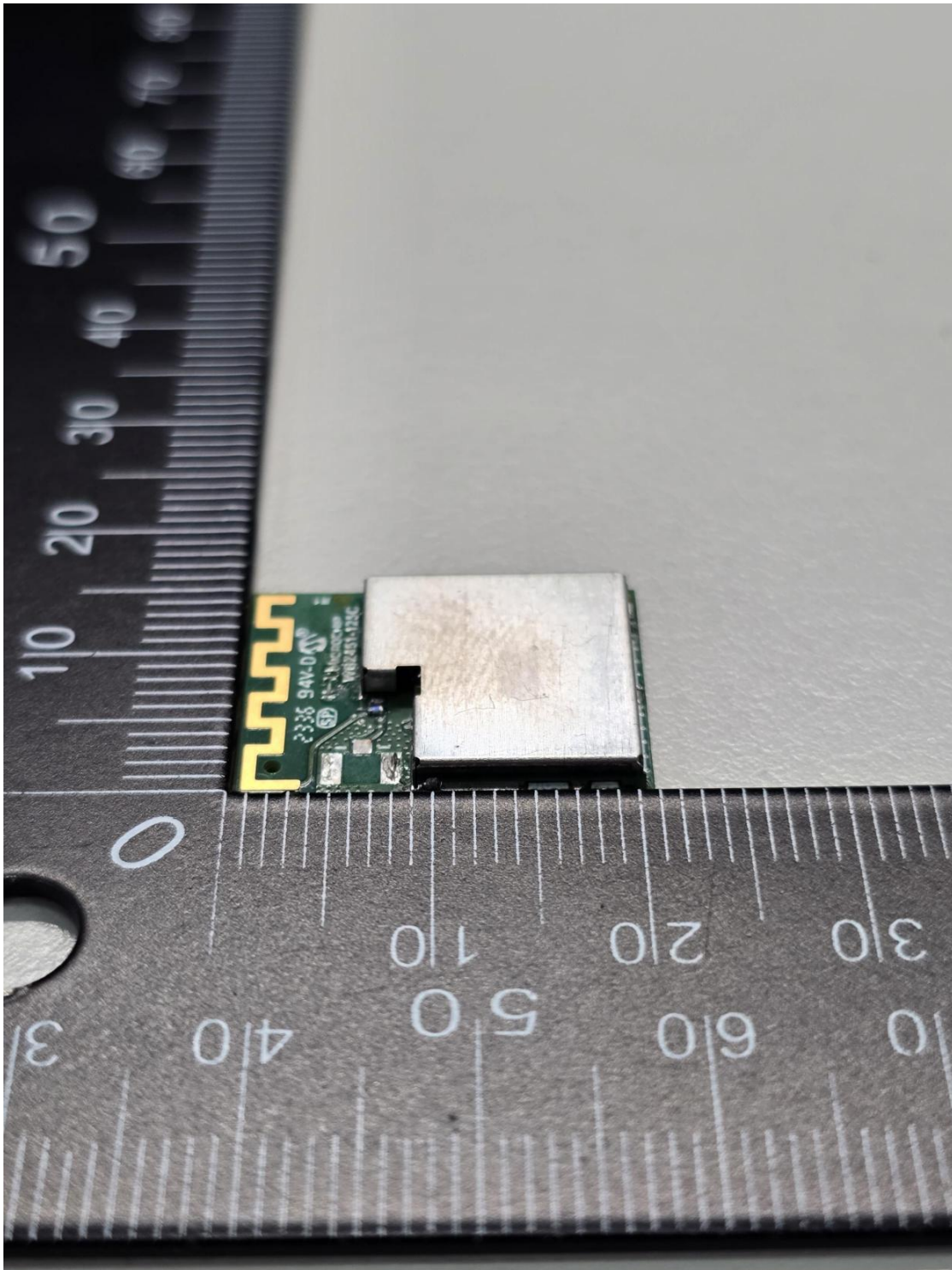
Product: Wireless MCU module with BLE 5.2 compliant and Zigbee 3.0 Radio
Type Identification: WBZ451PE-E



CN24BP3U 001
CN24IHAS 001
CN248T1X 001
CN24SC0S 001
CN24XFE7 001
CN24HV1Z 001

Page 11 of 14

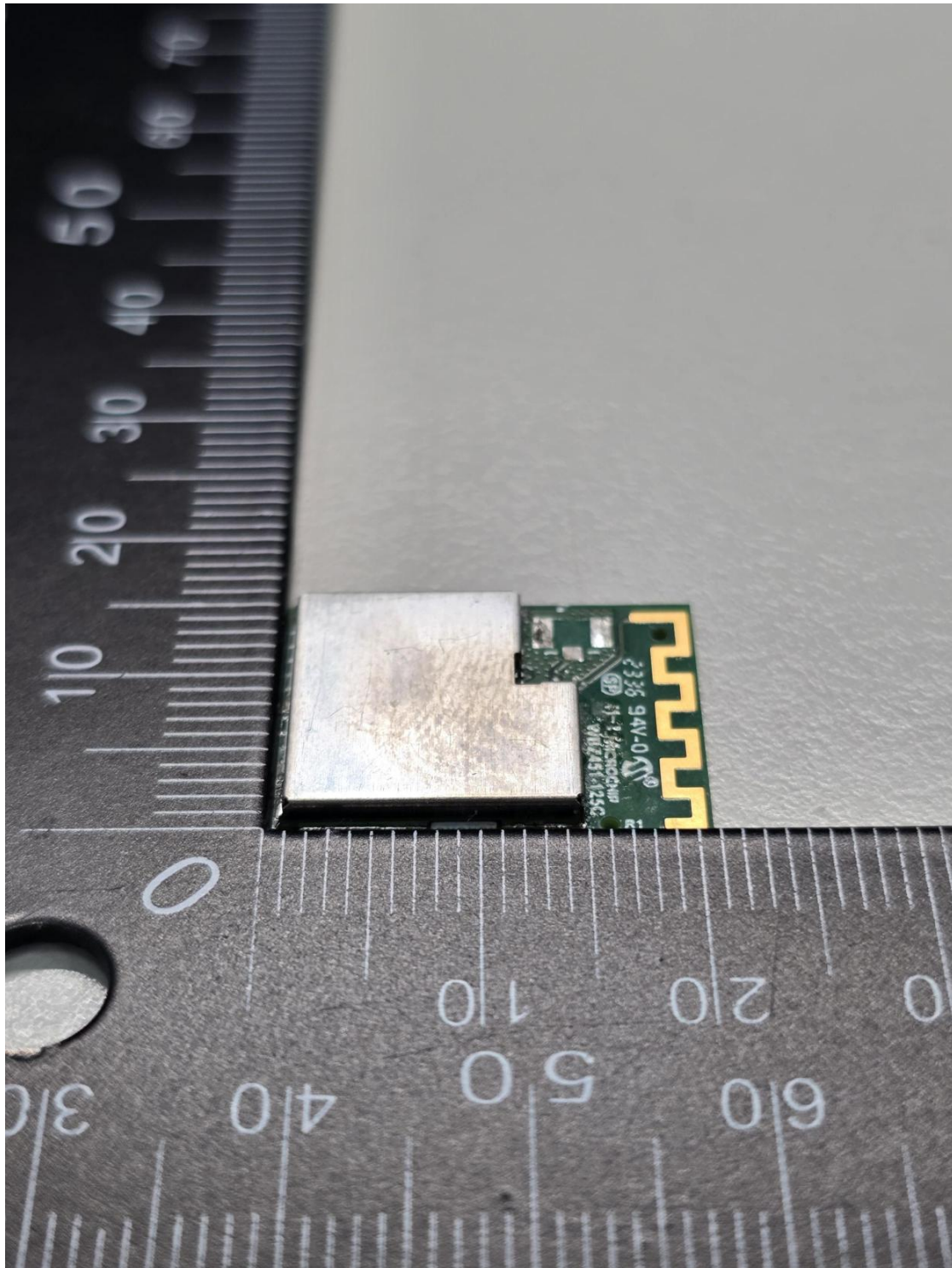
Product: Wireless MCU module with BLE 5.2 compliant and Zigbee 3.0 Radio
Type Identification: WBZ451PE-E



CN24BP3U 001
CN24IHAS 001
CN248T1X 001
CN24SC0S 001
CN24XFE7 001
CN24HV1Z 001

Page 12 of 14

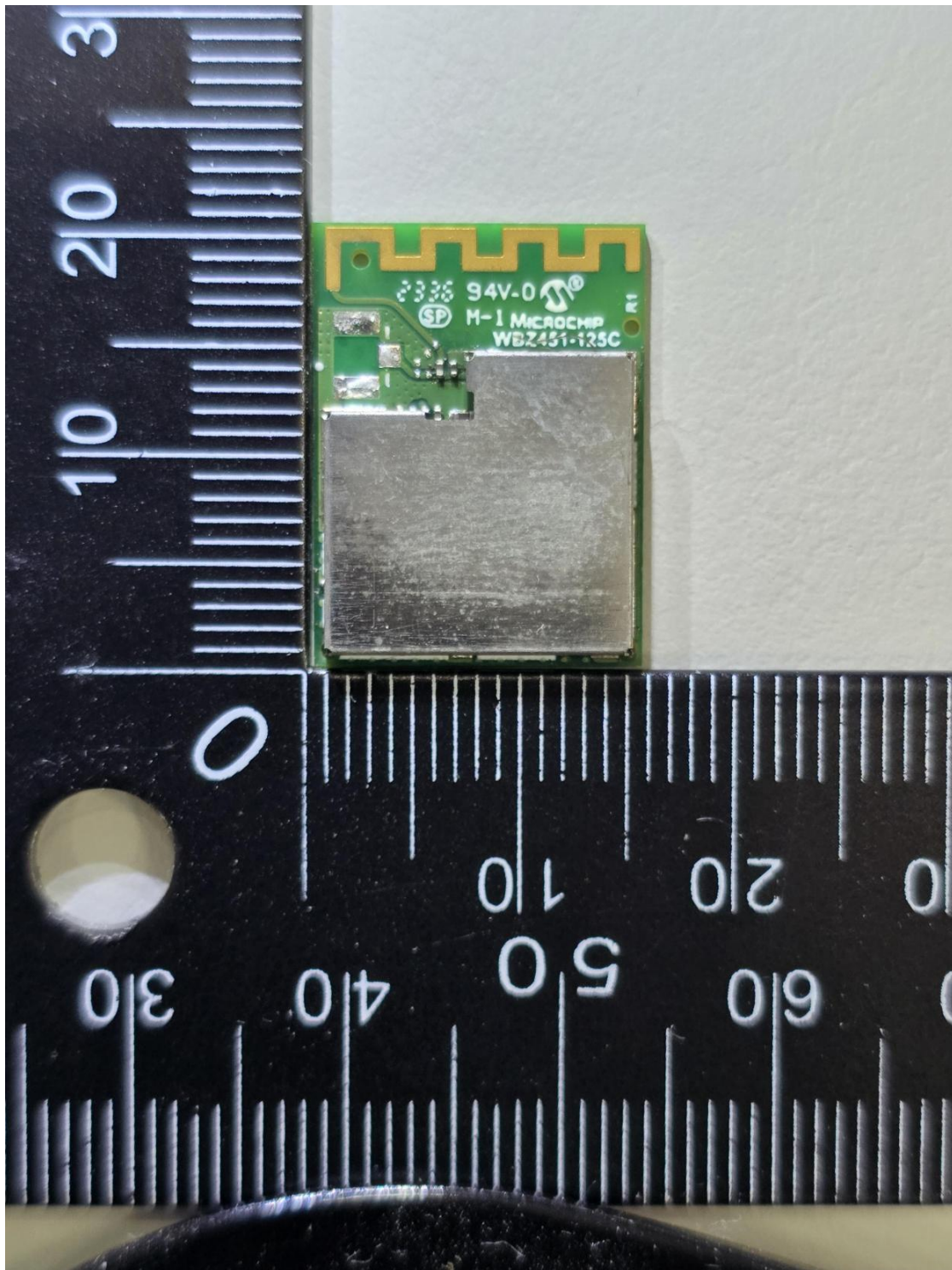
Product: Wireless MCU module with BLE 5.2 compliant and Zigbee 3.0 Radio
Type Identification: WBZ451PE-E



CN24BP3U 001
CN24IHAS 001
CN248T1X 001
CN24SC0S 001
CN24XFE7 001
CN24HV1Z 001

Page 13 of 14

Product: Wireless MCU module with BLE 5.2 compliant and Zigbee 3.0 Radio
Type Identification: WBZ451PE-E



CN24BP3U 001
CN24IHAS 001
CN248T1X 001
CN24SC0S 001
CN24XFE7 001
CN24HV1Z 001

Page 14 of 14

Product: Wireless MCU module with BLE 5.2 compliant and Zigbee 3.0 Radio
Type Identification: WBZ451PE-E

