
Installation & Configuration Guide for

Intelpage IP

Amcom Software, Inc.

Copyright

Intelpage IP v2.12 Firmware
Document Version 1.0
Last Saved Date: October 10, 2013

Copyright 2003-2013 Amcom Software, Inc. All Rights Reserved.

Information in this document is subject to change without notice. The software described in this document is furnished under one or more Program/Product License Agreements. The software may be used or copied only in accordance with the terms of those agreements. No part of this publication may be reproduced, stored in a retrieval system, or transmitted by any means electronic or mechanical, including photocopying and recording for any purpose without the written permission of Amcom Software, Inc.

Amcom Software, Inc.
10400 Yellow Circle Drive
Suite 100
Eden Prairie, MN 55343
USA

Trademarks

Microsoft and Windows are trademarks of Microsoft Corporation. Other brands and their products are trademarks or registered trademarks of their respective holders and should be noted as such.

Contents

Intelpage IP	1
Intelpage IP	1
Compliance Information	1
Safety and General Information	3
About the Intelpage IP	4
About the Intelpage IP	4
Intelpage IP Kit	4
LEDs and Connectors	5
LED Indicators	6
Connectors	6
LCD Display (High Power Version Only)	7
Installation	8
Installation	8
Rack Version	8
Desktop Version	9
Configuration	10
Configuration	10
Connecting	10
Logging In	13
User Interface Fields	14
Home	14
Pagers	15
Network Settings	16
Serial Port Settings	17
Transmitter Settings	18
Protocol	19
Pocsag	21
Password	22
IP Access List	23
Site Survey	24
Status	25
Licensing	26
Configuration Examples	28
Configuration Examples	28
Setting up Dial-in TAP to Intelpage IP from Messenger	28

Appendix	30
Appendix	30
Configuring Network Settings Through the Terminal Interface	30
Transmitters	34
Installing Multiple Transmitters and Aerials	34
VSWR	34
Types of Antennas	35
Technical Specifications	36
General	36
Desktop Version Specific	36
5 Watt Rack Version Specific	36
High Power Version Specific	37

Intelpage IP

Intelpage IP

Installation

“Installation” on page 8 includes information on how to install the Intelpage IP system.

Configuration

“Configuration” on page 10 includes information on how to connect and log into the Intelpage IP system. In addition, information on the user interface fields on the following topics are included: home, send a message, pagers, network settings, serial port settings, transmitter settings, protocol, POCSAG, password IP access list, survey, status, and licensing.

Configuration Examples

“Configuration Examples” on page 28 includes an example configuration for the Intelpage IP system. The information covers how to set up a dial-in TAP to the Intelpage IP from Messenger.

Appendix

“Appendix” on page 30 includes information on cable pin-outs, technical information, and technical specifications for the Intelpage IP product.

Compliance Information

SAA (AUSTRALIA)

To ensure compliance with ACA Technical Standards, this equipment is labeled with a Telecommunications Compliance label. For safety reasons, this equipment should only be connected to compliant telecommunications equipment in accordance with the manufacturer’s instructions.



FCC (USA)

Part 15

This equipment has been tested and was found to comply with FCC Rules and Regulations, Part 15 with the limits of a Class B digital device, designed to provide reasonable protection against harmful interference. This equipment generates, uses, and can radiate frequency energy and if not installed and used in accordance with the instructions, may cause interference harmful to radio communications. On the base of the equipment is a label containing an FCC Registration Number, if applicable.

Part 90

This equipment has been tested and found to comply with FCC Rules and Regulations, Part 90.

FCCID: T5GPT5



IC (INDUSTRY CANADA, INDUSTRIE CANADA)

This class B digital apparatus complies with Canadian ICES-003. IC: 4767A-PT5



Industrie
Canada

Industry
Canada

CE (EUROPE)

Amcom Software declares under our sole responsibility that the product Intelpage IP to which this declaration relates, is in conformity with the following standards and/or other normative documents.

- EN 300 224-2 v1.1.1 (2001-01)
- EN 55022: 1994 +A1: 1995 +A2: 1997
- EN 301 489 -2 v1.3.1 (2002-08)
- EN 60950-1: 2001

We hereby declare that all essential radio test suites have been carried out and that the above named product is in compliance to all the essential requirements of Directive 1999/5/EC.

The conformity assessment procedure referred to in Article 10(5) and detailed in Annex IV of Directive 1999/5/EC has been followed with the involvement of the following notified body:

Bay Area Compliance Laboratory Corporation, 1274 Anvilwood Ave., Sunnyvale, CA 94089, USA

Identification mark: 1313 (*Notified Body Number*)

The equipment also carries the class 2 equipment identifier (exclamation mark).

The technical documentation relevant to the above equipment can be made available for inspection on application to Amcom Software.



ROHS & WEEE

To minimize the environmental impact and take more responsibility for the world in which we live, Amcom Software hereby confirms that the following product series comply with Directive 2002/95/EC (RoHS) and 2002/96/EC (WEEE) of the European Parliament.



Safety and General Information

This section includes important information on safe and efficient operation. Please read the following information before using the unit

Exposure to Radio Frequency Energy

Your Intelpage IP contains a low power radio transmitter. When it is ON, it transmits radio frequency (RF) energy.

Your Intelpage IP is designed to comply with the following national and international standards and guidelines regarding exposure of human beings to radio frequency electromagnetic energy (EME):

- United States Federal Communications Commission, Code of Regulations; 47 CFR part 2 sub-part J
- American National Standards Institute (ANSI) / Institute of Electrical and Electronic Engineers (IEEE) C95.1-1992
- Institute of Electrical and Electronic Engineers (IEEE) C95.1-1999 Edition
- National Council on Radiation Protection and Measurements (NCRP) of the United States, Report 86, 1986
- International Commission on Non-Ionizing Radiation Protection (ICNIRP) 1998
- National Radiological Protection Board of the United Kingdom 1995
- Ministry of Health (Canada) Safety Code 6. Limits of Human Exposure to Radiofrequency Electromagnetic Fields in the Frequency Range from 3 kHz to 300 GHz, 1999
- Australian Communications Authority Radio communications (Electromagnetic Radiation-Human Exposure) Standard 1999

To assure optimal performance and make sure human exposure to radio frequency electromagnetic energy is within the guidelines set forth in the above standards, always adhere to the procedures outlined below.

Antenna Care

Use only the supplied or an approved replacement antenna. Unauthorized antennas, modifications, or attachments could damage the device. Do NOT hold the antenna when the device is in use. Holding the antenna affects signal quality and may cause the Intelpage IP to operate at a higher power level than needed. Do not use Intelpage IP with a damaged antenna. If a damaged antenna comes into contact with your skin, a minor burn can result. The Intelpage IP antenna port should only be connected to internal antennas located in the same building as the main equipment.

Electromagnetic Interference/Compatibility

Nearly every electronic device is susceptible to electromagnetic interference (EMI) if inadequately shielded, designed, or otherwise configured for electromagnetic compatibility.

SELV warning

The Fusion Intelpage IP and Alarm Dispatch modules have been assessed as SELV throughout, all ports shall be connected to approved SELV circuits or an approved isolation unit shall be used.

Potentially Explosive Atmospheres

Do not operate the Intelpage IP in any area with a potentially explosive atmosphere. Sparks in a potentially explosive atmosphere can cause an explosion or fire resulting in bodily injury or even death. Areas with potentially explosive atmospheres include fueling areas such as below decks on boats, fuel or chemical transfer or storage facilities, areas where the air contains chemicals or particles such as grain, dust, or metal powders, and any other area where you would normally be advised to turn off your vehicle engine. Areas with potentially explosive atmospheres are often but not always posted.

Blasting Caps and Areas

To avoid possible interference with blasting operations, do not use the Intelpage IP near electrical blasting caps, in a blasting area, or in areas posted: "Turn off two-way radio." Obey all signs and instructions.

About the Intelpage IP

About the Intelpage IP

The Fusion Intelpage IP is a high quality paging transmitter capable of encoding serial or TCP/IP data into POCSAG.

Intelpage IP supports numerous industry standard protocols such as TAP (PET or IXO), COMP, SCOPE, TNPP, and Waveware (Tekk).

Intelpage IP includes both an RJ45 Ethernet port and an RJ45 RS232 port. This enables system programming and Ethernet or serial input from third-party systems. In addition, both ports can be used simultaneously and may be set to different protocols, thus allowing greater flexibility.



Intelpage IP Kit

Your Intelpage IP kit contains:

- Intelpage IP unit
- Communications cables
 - Green – Crossover serial cable (RJ45 to RJ45)
 - Black – Serial cable (RJ45 to DB9 female)
 - Blue – Straight through Ethernet cable (RJ45 to RJ45)
 - Red – Crossover Ethernet cable (RJ45 to RJ45)
- An Intelpage IP Quick Setup Guide
- CD containing manuals and configuration programs

Plus if you ordered a desktop version Intelpage IP:

- 12 VDC power supply with mains cable
- Plastic wall mount bracket
- Whip antenna with right angle adapter

Or if you ordered a 5 watt 19" Rack version Intelpage IP:

- IEC Mains power cable
- Pack including 2 x rack ears, 6 x black countersunk screws, 4 x rubber feet
- N-type to BNC right angle adapter
- Whip antenna

Or if you ordered a high power 19" Rack version Intelpage IP:

- IEC Mains power cable
- Pack including 2 x rack ears, 6 x black countersunk screws, 4 x rubber feet

NOTE: As part of the installation of your Intelpage IP 25/50/100 unit, an antenna capable of handling the power from the rack amp is also required. The type of antenna used must be carefully chosen depending on the site and power output of the transmitter.



LEDs and Connectors

Depending on which type of Intelpage IP you have purchased, the connector and LED layout are slightly different. The rack versions have all of their connectors and LEDs on the front panel as shown below.



The only exception is the mains input IEC connector and the antenna connector. You are supplied with a mains lead in the Intelpage IP kit which plugs straight into this IEC connector.

The antenna port is an opening to allow connection of the antenna to the internal transmitter. The connector is a standard N-type 50ohm.



The desktop version has all of its LED indicators on the front panel while all of the connectors are on the rear panel.



The desktop version is supplied power via the “Power 12VDC” connector. The Intelpage IP requires 12VDC @ 2amps regulated. You are supplied with a suitable power supply with mains lead which plugs straight into this socket.

The antenna port is an opening to allow connection of the antenna to the internal transmitter. The connector is a standard BNC 50ohm.

LED Indicators

- **Power Indicator**
 - **Power** (Yellow) - Indicates that power is applied to the back of the unit and that it is operational.
- **Transmitter Indicators**
 - **Tx PTT** (Yellow) - Indicates that the externally connected POCSAG transmitter is currently busy transmitting (“Keyed up”).
 - **Tx Data** (Red) - Indicates POCSAG data activity.
 - **C.D.** (Yellow) – Indicates that the unit is initializing (may remain on for 30 seconds at startup if DHCP is used) or indicates channel is busy (Carrier Detect).
- **Serial Indicators**
 - **RS232 Tx** (Red) - Indicates that the receive line of the serial port is active.
 - **RS232 Rx** (Green) – Indicates that the transmit line of the serial port is active.
- **Ethernet Indicators**
 - **IP Activity** (Green) - Indicated activity on the network.
 - **IP Link** (Green) - Indicates device is successfully connected to the network.

Connectors

Ethernet

The RJ45 Ethernet port may be used for connection to a PC, LAN, or external system for configuration and operational purposes.

The RJ45 port on Intelpage IP is an Ethernet port like any other that may be found on a PC or network device. The Intelpage IP supports 10Mbps Ethernet connections.

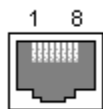
If the Intelpage IP is to be connected to a PC network (i.e. into a switch or hub), then a straight-through cable should be used. A straight through Ethernet cable is included in the package (blue cable).

If the Intelpage IP is to be connected directly to a single PC or directly to another Ethernet enabled Fusion Series product, an RJ45 crossover cable should be used. An Ethernet crossover cable is included in the package (red cable).


NOTE: Ensure that the switch/PC you are connecting the Intelpage IP to is set to auto-negotiate the link speed, otherwise set it to 10Mbps half-duplex.

RS232

The RS232 port may be used for connection to a PC or external system for configuration or operational purposes.



The pinouts are described below.

Pin No.	Name	Dir	Description
1			
2			
3			
4	GND		System Ground
5	RXD	IN	Receive Data
6	TXD	OUT	Transmit Data
7	CTS	IN	Clear to Send
8	RTS	OUT	Request to Send

LCD Display (High Power Version Only)

The front panel contains a digital panel meter that displays the amount of current the power amp is drawing; therefore, it is a useful diagnostic tool.

The table below shows the nominal values that will be displayed when viewing each reading while the unit is transmitting.

Model Number	Amps
25 watt transmitter	5.0 – 8.0
50 watt transmitter	11.0 – 12.0
100 watt transmitter	17.0 – 19.5

Installation

Installation

Follow the relevant section below. Depending on which type of Intelpage IP you have purchased, the installation is slightly different.

Rack Version

Before mounting the enclosure, you need to decide where to place the unit. The Intelpage IP can be desk mounted or installed into a standard 19 inch rack frame.

Your Intelpage IP package contains four rubber feet which can be placed on the underside of the unit if you wish to desk mount it.

If the unit is to be rack mounted, you need to attach a pair of rack ears. Your Intelpage IP package contains a set of rack ears and six screws. Use a Phillips screwdriver to attach the ears to the unit.

WARNING: With the high power 25/50/200 watt versions, do not cover any of the front, rear, or top vents on the unit with objects or other equipment. If the transmitter is being rack mounted, ensure there is a gap of at least 2 rack-units (10cm / 4 inches) above the top panel. This ensures the transmitter has adequate ventilation.

A suitable antenna capable of handling the rated power continuously must be connected to the N-type connector on the rear panel. The antenna for the unit must not be mounted within 10 meters of any other sensitive electronic equipment including other Fusion series products, routers, computers, or phone systems. The antenna should have its VSWR checked before connecting the transmitter to it. See the “Transmitters” section on page 34 for more information regarding antenna choice and VSWR.

WARNING: With the high power 25/50/200 watt versions, The antenna should be mounted so as to maintain a distance of at least 89CM between the antenna and bystanders, when operated in a typical installation and a 4 dBi antenna.

Use the supplied IEC mains power lead to connect 110-240VAC 50/60 Hz supply to the Intelpage IP unit.



Desktop Version

Before mounting the enclosure, you need to decide where to place the unit. The Intelpage IP comes with rubber feet installed, allowing it to sit on a desk or table, or be stacked upon other plastic Fusion Series modules.

The kit also includes a wall mounting bracket. To install this bracket:

1. Use a Philips screwdriver to remove the four screws holding the rubber feet.
2. Seat the bracket on the base of the unit. It only fits one way around.
3. Use the screws that used to hold the rubber feet in position to hold the wall mount bracket in position.



Configuration

Configuration

Information on how to configure the Intelpage IP system is included in this section.

Connecting

“Connecting” on page 10 includes information on how to connect to the Intelpage IP system.

Logging In

“Logging In” on page 13 includes information on how to log into the Intelpage IP system.

User Interface Fields

“User Interface Fields” on page 14 includes information on the fields included in the user interface. The portions that are covered include: home, send a message, pagers, network settings, serial port settings, transmitter settings, protocol, POCSAG, password, IP access list, survey, status, and licensing.

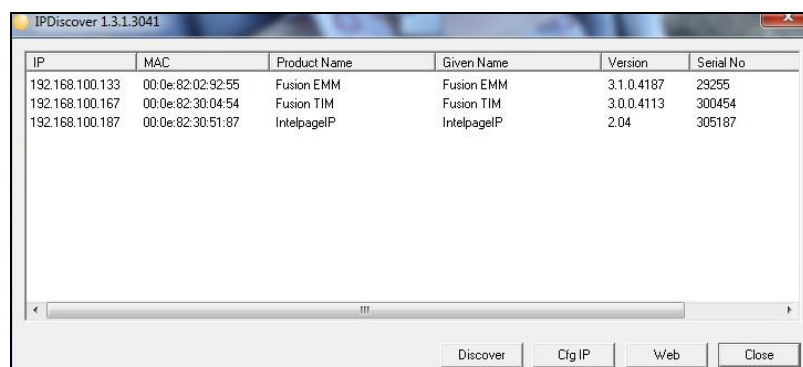
Connecting

In order to view the user interface, you must first connect to the Intelpage IP via its Ethernet port. There are two ways that you can connect to the unit.

1. Directly with a PC or laptop using the supplied crossover Ethernet cable (red RJ45 - RJ45).
2. Connect the unit to a local area network (LAN) by connecting it to a spare port or to a switch/hub using the supplied straight through Ethernet cable (blue RJ45 - RJ45).

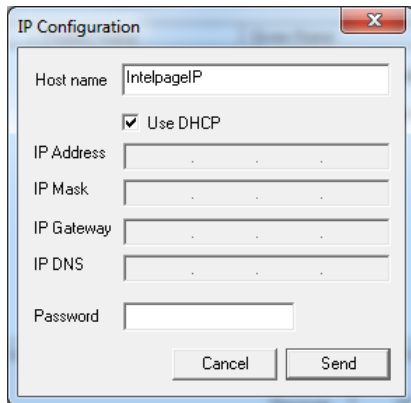
Once you have plugged in the unit you can use a utility called IPDiscover to locate your Intelpage IP on the network and start a web session with the unit. This program is included within the “IPDiscover” folder on the CD included in the package. Run the program and you see all Fusion Series products on the network.

NOTE: DHCP is enabled by default. If no DHCP server is found on the network, the default IP of 192.168.0.100 is used.



In the example above, there is an Intelpage IP on the network at IP Address 192.168.100.187. If you would like to configure the IP settings of this unit you may click the **CfgIP** button. You can then turn off DHCP if it is not required or change the unit's IP Address.

NOTE: By default, there is no password required to configure these settings in IPDiscover.

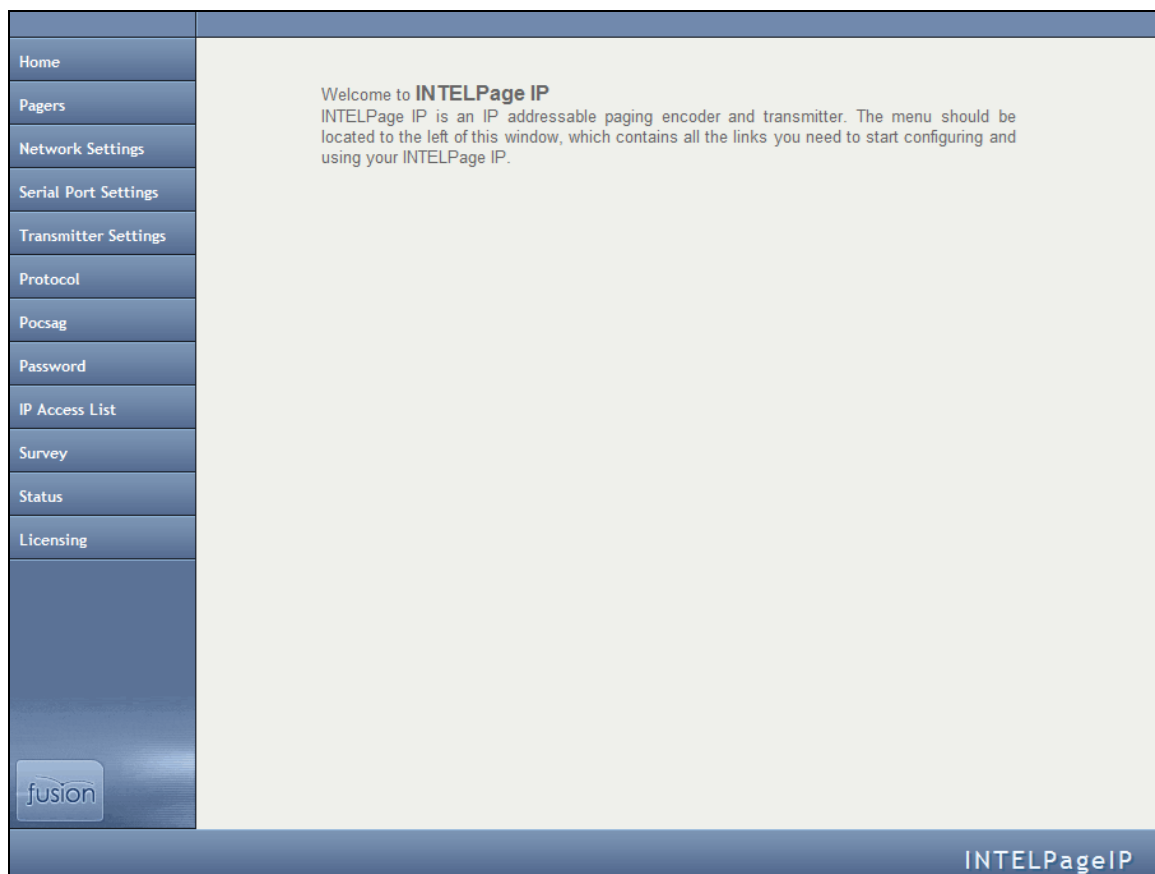
A screenshot of a Windows-style dialog box titled "IP Configuration". It contains several input fields: "Host name" with the text "IntelpageIP", a checked checkbox labeled "Use DHCP", and empty fields for "IP Address", "IP Mask", "IP Gateway", "IP DNS", and "Password". At the bottom are "Cancel" and "Send" buttons.

NOTE: If you cannot connect to the Intelpage IP, you should set your PC's network card IP address to be on the same subnet as the Intelpage IP. For example, if the Intelpage IP is set to 192.168.1.100, you should set your PC IP address to 192.168.1.x (where x is 1-254).

If you are happy with the IP settings, perform the following actions:

- a. Highlight the unit in the IPDiscover program.
- b. Click the **Web** button. A browser window opens, displaying the login screen, as shown below. The Fusion Intelpage IP user interface is provided via a web page, meaning that it can be accessed remotely from any PC on the network. For the best results, Internet Explorer 6 or higher should be used.

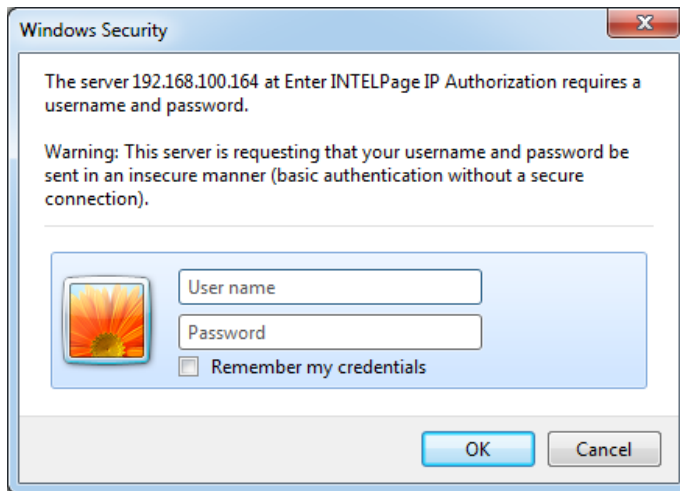
NOTE: IE8/IE9 can also be used; however, "Compatibility Mode" may need to be enabled to correctly display the webpages.



NOTE: If you are having issues accessing the Intelpage web interface, some basic networking settings such as the Hostname, IP Address, and DHCP settings can also be configured using the built in Terminal interface. See later on in this manual for details on this.

Logging In

Click on one of the menu items on the left-hand side to bring up the authorization window as shown below.



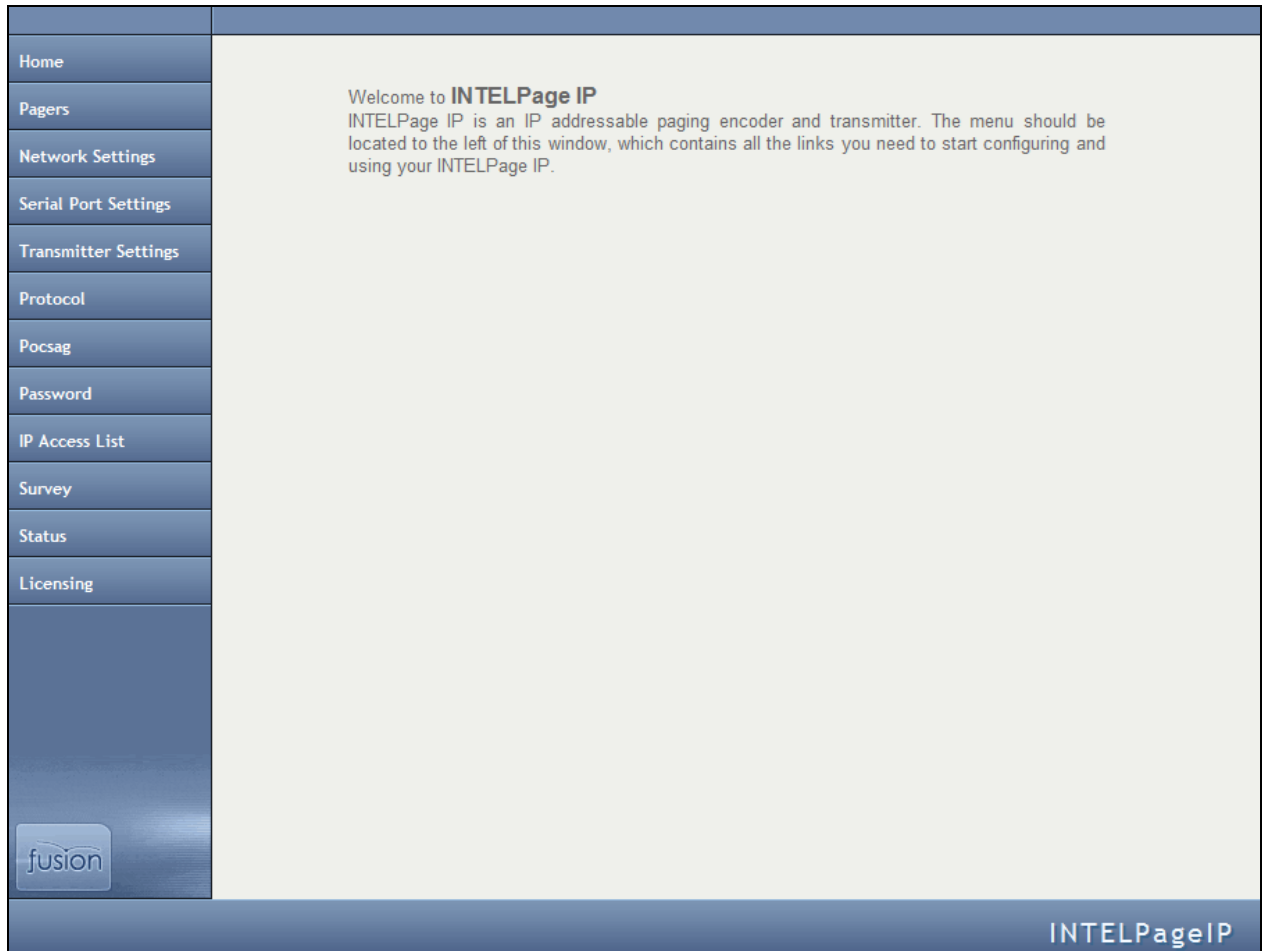
1. In the **User name** field, enter **maint**.
2. In the **Password** field, do not enter information.
3. Click the **OK** button. You are logged in.

User Interface Fields

The section below explains the various menus and fields on the web interface.

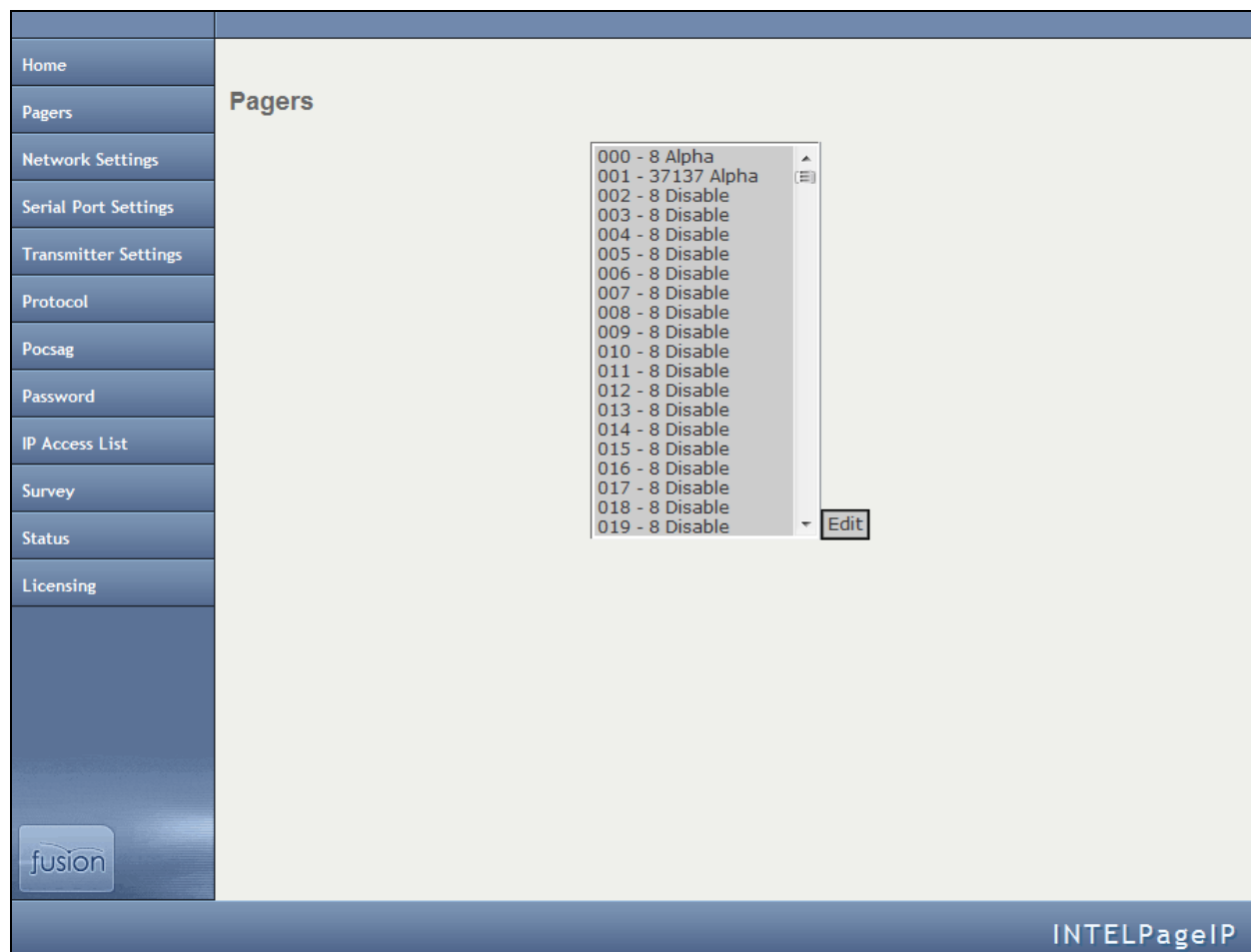
Home

Clicking this menu returns you to the main page.



Pagers

This screen is used to edit Intelpage IP's internal pager database.



The Intelpage IP supports pager IDs from 000 to 999. To enable or edit a pager ID, choose an item from the list and click the **Edit** button.

Enter in the required cap code and set the encoding type to one of the following:

- Tone Only
- Numeric
- Alphanumeric
- Disabled (Disables the Pager ID)

Network Settings

This screen is used to edit Intelpage IP's networking settings.

Home	<h3>Network Setting</h3> <table border="1"> <tr> <td>Host name</td> <td>Intelpage IP</td> </tr> <tr> <td>DHCP Enabled</td> <td><input type="checkbox"/></td> </tr> <tr> <td>IP Address</td> <td>192.168.100.164</td> </tr> <tr> <td>Ethernet Protocol Port</td> <td>7000</td> </tr> <tr> <td>Mask</td> <td>255.255.255.0</td> </tr> <tr> <td>Gateway</td> <td>192.168.100.1</td> </tr> <tr> <td>MAC</td> <td>00:0e:82:31:54:27</td> </tr> <tr> <td>Reboot?</td> <td><input type="checkbox"/></td> </tr> </table> <p><input type="button" value="Save"/> <input type="button" value="Undo"/></p>	Host name	Intelpage IP	DHCP Enabled	<input type="checkbox"/>	IP Address	192.168.100.164	Ethernet Protocol Port	7000	Mask	255.255.255.0	Gateway	192.168.100.1	MAC	00:0e:82:31:54:27	Reboot?	<input type="checkbox"/>
Host name		Intelpage IP															
DHCP Enabled		<input type="checkbox"/>															
IP Address		192.168.100.164															
Ethernet Protocol Port		7000															
Mask		255.255.255.0															
Gateway		192.168.100.1															
MAC		00:0e:82:31:54:27															
Reboot?		<input type="checkbox"/>															
Pagers																	
Network Settings																	
Serial Port Settings																	
Transmitter Settings																	
Protocol																	
Pocsag																	
Password																	
IP Access List																	
Survey																	
Status																	
Licensing																	
																	
<div>INTELPAGEIP</div>																	

Hostname	Here you can give your Intelpage IP a name on the network. This name shows up in the IPDiscover utility. Giving a unique name allows multiple IP based Fusion series devices to be easily located and managed.
DHCP Enabled	By default, this option is enabled. This means that upon powering up, your Intelpage IP attempts to contact a DHCP server on the network that it is connected to in order to gain an IP Address. The supplied IPDiscover utility can then be used to locate units on your network. In some situations, such as if your network has no DHCP server or when interfacing with EMM, Messenger or TIM, the Intelpage IP may need a fixed IP Address. In this case you need to fill in the IP Address , Mask , and Gateway fields.
IP Address	The IP address of the Intelpage IP unit.
Ethernet Protocol Port	This is the TCP port that Intelpage IP listens on for Ethernet protocol information. By default, this is 6000. This port needs to be configured on the system connecting to Intelpage IP over the network.
Mask	The network mask of the network you are connected to.
Gateway	If the device is to be accessed from the internet or another network, the gateway is the route used to reach the external network.
MAC	This is the Intelpage IP's unique factory set hardware number on the network.
Reboot?	After making any changes to the network settings, check this box and click the Save button to load the new settings.

NOTE: The IP address, mask, and gateway fields display the current settings. If DHCP is enabled, any changes to the fields are not saved because they are server assigned.

Basic networking settings such as Hostname, IP Address, and DHCP settings can also be configured using the built-in Terminal interface.

Serial Port Settings

This screen is used to edit Intelpage IP's serial port settings.

Serial Port Setting	
Baud	2400
Data bits	8
Parity	NONE
Stop bits	1
Flow control	NONE
Reboot?	<input type="checkbox"/>

INTELPageIP

Baud	The transmission speed of the RS232 port on the Intelpage IP (default 9600).
Data bits	The number of bits that actually contain information pertaining to the message rather than to the transmission (e.g. stop bits). The default value is 8.
Parity	A method of verifying the accuracy of the data sent. In this case it is either none (not used), odd, or even. The default value is NONE.
Stop bits	The number of bits sent at the end of each byte, which is used for synchronization purposes. In this case, it is either 1 or 2. Please note that the default value is 1.
Flow Control	This refers to the “flow control” property of the connection.
Reboot?	After making any changes to the network settings, enable this option and click the Save button to load the new settings.

NOTE: The Intelpage IP baud, data bits, parity, and stop bits must all match that of the connected system.

Transmitter Settings

This screen is used to edit Intelpage IP's internal transmitter settings.

NOTE: The settings outlined on this page cannot be viewed or changed if you ordered a transmitter with the busy detect option.

Transmitter Setting

Frequency Band	440-470 MHz
Frequency	457575000 Hz
Power Level	Medium ▼
Channel Spacing	Wide Band

Save Undo

fusion


INTELPAGEIP

Frequency Band	After the Intelpage IP unit has read the data from the internal transmitter, it displays the band of the radio inside. This is either 148-174MHz or 440-470MHz.
Frequency	Here you can type the frequency required for the site in Hz. For example, if your pagers are operating on 450.325MHz, then you would type in 450325000.
Power Level	Use the drop down menu to toggle between low, medium, or high power levels. These values typically correspond to power output levels of 1W, 2W, and 4W, respectively on the Intelpage IP 5.
Channel Spacing	This field refers to the space between adjacent channels. The majority of applications use a wide band channel, but some applications can use a narrow band channel. Please note that after a firmware upgrade, this field is automatically populated with the correct information for your system.

WARNING: If you have a high power 25/50/100 Watt Intelpage IP, you should not change the frequency or power level of the unit without consulting your place of purchase. If this information is changed, the power amplifier could be damaged.

Protocol

This screen is used to edit Intelpage IP's protocol settings.

Home	<h3>Protocol Selection</h3> <table border="1"> <tr> <td>Ethernet Protocol Use</td> <td>TAP</td> </tr> <tr> <td>Serial Port Protocol Use</td> <td>TAP</td> </tr> <tr> <td>Reboot?</td> <td><input type="checkbox"/></td> </tr> </table> <h3>Protocol Settings</h3> <table border="1"> <tr> <td>Max Message Count</td> <td>0</td> </tr> <tr> <td>Lookup PagerID</td> <td><input type="checkbox"/></td> </tr> <tr> <td>Never Disconnect</td> <td><input type="checkbox"/></td> </tr> <tr> <td>TAP Disable ID= Every 2 Seconds</td> <td><input type="checkbox"/></td> </tr> <tr> <td>Ignore ID= Response</td> <td><input type="checkbox"/></td> </tr> </table> <h3>Priority Keywords</h3> <table border="1"> <thead> <tr> <th></th> <th>Priority Keyword</th> <th>Tone Replacement</th> </tr> </thead> <tbody> <tr> <td>1</td> <td></td> <td>A</td> </tr> <tr> <td>2</td> <td></td> <td>A</td> </tr> </tbody> </table> <p>Save Undo</p>	Ethernet Protocol Use	TAP	Serial Port Protocol Use	TAP	Reboot?	<input type="checkbox"/>	Max Message Count	0	Lookup PagerID	<input type="checkbox"/>	Never Disconnect	<input type="checkbox"/>	TAP Disable ID= Every 2 Seconds	<input type="checkbox"/>	Ignore ID= Response	<input type="checkbox"/>		Priority Keyword	Tone Replacement	1		A	2		A
Ethernet Protocol Use		TAP																								
Serial Port Protocol Use		TAP																								
Reboot?		<input type="checkbox"/>																								
Max Message Count		0																								
Lookup PagerID		<input type="checkbox"/>																								
Never Disconnect		<input type="checkbox"/>																								
TAP Disable ID= Every 2 Seconds		<input type="checkbox"/>																								
Ignore ID= Response		<input type="checkbox"/>																								
		Priority Keyword	Tone Replacement																							
1			A																							
2			A																							
Pagers																										
Network Settings																										
Serial Port Settings																										
Transmitter Settings																										
Protocol																										
Pocsag																										
Password																										
IP Access List																										
Survey																										
Status																										
Licensing																										
																										
INTELPageIP																										

Ethernet Protocol Use	The protocol that the Ethernet port uses. The options available are COMP1, COMP2, SCOPE, TAP, Terminal, TNPP, and Tekk. All the protocols use TCP port 6000 by default; however, this port is adjustable.
Serial Port Protocol Use	The protocol that the RS232 port (RJ45) uses. The options available are COMP1, COMP2, SCOPE, TAP, Terminal, TNPP, and Tekk.
Reboot?	After making any changes to the protocol settings, enable this option and click the Save button to load the new settings.
Max Msg Count	This refers to the maximum number of messages that can be sent by a protocol in a single session/connection. A value of "0" means no maximum limit. The default value is 0.
Lookup PagerID	If enabled, the system looks up Pager IDs in the pager database. Otherwise the system uses the cap code supplied in the message.
Never Disconnect	If enabled, the Intelpage IP never disconnects from the remote system. It only disconnects when the system to which it is connected disconnects.
TAP Disable ID= every 2 seconds	If left disabled and the TAP protocol is being used, a carriage return resulting in an "ID=" is issued every 2 seconds.

Ignore ID= response	For reliable communication with certain TAP systems, such as the Teltron HPGA Paging Gateway, this field may need to be checked. Checking this field ignores the ID= response from the connected system so that communication does not timeout and cause an error. The Intelpage IP must be power cycled after enabling this option. This setting must also be used in conjunction with the “TAP Disable ID= every 2 seconds” setting set to enabled.
Priority Keywords	Priority keywords are a useful function of Intelpage IP which allows a different beep code to be sent if a certain word is received in a message. For example, most messages may be sent through to users with the default beep code (tone) A. However, for important messages containing, say the word “fire,” you might want to be sent with the beep code D so that the users pager beeps in a different manner. In this case, you would enter the Priority Keyword field “fire” and choose D in the Tone Replacement field.

NOTE: The password in the TAP protocol is ignored.


Pager ID 000 must be configured for COMP1 messages.

The TNPP device address is 1234. TNPP received address is ignored. All messages are accepted.

If you are sending to a combination of numeric, alpha, and tone pagers, you need to use TNPP or SCOPE which support various encoding formats.

Pocsag

This screen is used to edit Intelpage IP's POCSAG settings.

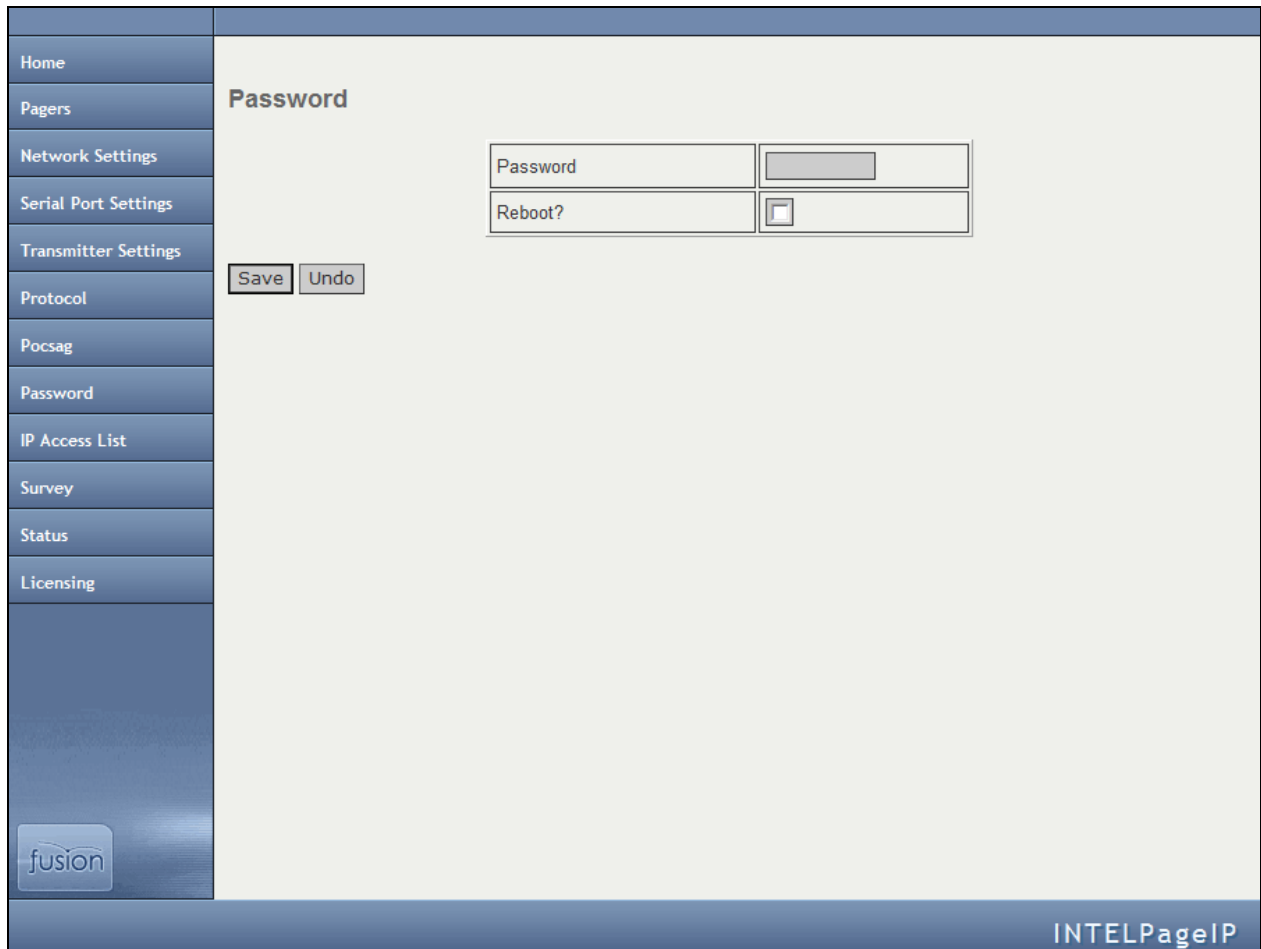
Home	<h3>POCSAG Settings</h3> <table border="1"> <tr> <td>Speed</td> <td>512 ▾</td> </tr> <tr> <td>Default Tone</td> <td>A ▾</td> </tr> <tr> <td>Type</td> <td>Alpha ▾</td> </tr> <tr> <td>PTT Invert</td> <td><input checked="" type="checkbox"/></td> </tr> <tr> <td>Data Invert</td> <td><input type="checkbox"/></td> </tr> <tr> <td>Busy Invert</td> <td><input type="checkbox"/></td> </tr> <tr> <td>Ignore Busy</td> <td><input checked="" type="checkbox"/></td> </tr> </table> <p>Save Undo</p>	Speed	512 ▾	Default Tone	A ▾	Type	Alpha ▾	PTT Invert	<input checked="" type="checkbox"/>	Data Invert	<input type="checkbox"/>	Busy Invert	<input type="checkbox"/>	Ignore Busy	<input checked="" type="checkbox"/>
Speed		512 ▾													
Default Tone		A ▾													
Type		Alpha ▾													
PTT Invert		<input checked="" type="checkbox"/>													
Data Invert		<input type="checkbox"/>													
Busy Invert		<input type="checkbox"/>													
Ignore Busy		<input checked="" type="checkbox"/>													
Pagers															
Network Settings															
Serial Port Settings															
Transmitter Settings															
Protocol															
Pocsag															
Password															
IP Access List															
Survey															
Status															
Licensing															
															
INTELPageIP															

Speed	The baud rate speed of paging transmission in bps. This value must match that of the pagers receiving the messages. The default value is 512 bps.
Default Tone	The tone type that the pager emits when the message is received. The default beep code is A.
Type	The type of message to send. Tone only , Numeric , or Alpha . This should match the type of the pager.
PTT / Data / Busy Invert	If disabled, these invert the respective signal. By default, PTT invert should be enabled while Data Invert and Busy Invert should be disabled.
Ignore Busy	If enabled, the Intelpage IP sends the message regardless of whether or not the radio channel is busy. Set this to enabled, unless you ordered an Intelpage IP specifically with the busy detect option.

NOTE: If the SCOPE protocol is chosen, speed, tone, and type are specified along with the message and override these POCSAG settings values.

Password

This screen is used to edit the Intelpage IP's password.



The screenshot shows a web-based configuration interface for IntelPage IP. On the left is a vertical navigation menu with the following items: Home, Pagers, Network Settings, Serial Port Settings, Transmitter Settings, Protocol, Pocsag, Password (which is highlighted), IP Access List, Survey, Status, and Licensing. At the bottom of this menu is a 'fusion' logo. The main content area is titled 'Password' and contains two input fields: 'Password' and 'Reboot?'. The 'Password' field is a text box with a masked password. The 'Reboot?' field is a checkbox. Below these fields are 'Save' and 'Undo' buttons. The bottom of the interface features a dark blue footer bar with the text 'INTELPageIP' on the right side.

This is the password that must be entered in order to view or edit the Intelpage IP settings. It has a maximum length of 8 characters. A reboot is needed before the new password can take effect. Please note that the default username is “maint” without a password.

IP Access List

This screen is used to edit Intelpage IP's firewall.

The screenshot shows the 'IP Access List' configuration screen. On the left is a vertical navigation menu with the following items: Home, Pagers, Network Settings, Serial Port Settings, Transmitter Settings, Protocol, Pocsag, Password, IP Access List (highlighted), Survey, Status, and Licensing. At the bottom of the menu is a 'fusion' logo. The main content area has a title 'IP Access List' and a descriptive text: 'The received IP address is binary AND with each mask below. If result matches IP address, host is allowed. IP 0.0.0.0 disables rule. ACL disabled if all IP set to 0.0.0.0.' Below this text is a table with two columns: 'IP Address' and 'Mask'. The table contains six rows, each with a text input field for the IP address and a text input field for the mask. All IP addresses are set to '0.0.0.0' and all masks are set to '255.255.255.255'. Below the table are two buttons: 'Save' and 'Undo'. At the bottom right of the screen is the 'INTELPageIP' logo.

IP Address	Mask
0.0.0.0	255.255.255.255
0.0.0.0	255.255.255.255
0.0.0.0	255.255.255.255
0.0.0.0	255.255.255.255
0.0.0.0	255.255.255.255
0.0.0.0	255.255.255.255

This is the list of IP addresses that are allowed to use the Intelpage IP. A received IP address is binary. If the result matches one of the IP addresses in the control list, then the host is allowed. A brief explanation of binary and masking can be found in the Appendix.

An IP of 0.0.0.0 disables the rule. If all IP addresses are set to 0.0.0.0, then the entire access control list (ACL) is disabled.

Site Survey

This screen is used to configure IntelPage IP's site survey function.

Site Survey	
Capcode	8
Interval	30
Type	Alpha
Message	Site Survey
Survey Enable	<input type="checkbox"/>
Transmitter Test Enable	<input type="checkbox"/>

Save Undo

fusion

INTELPageIP

This menu is used to test a site by sending messages periodically. One person is required for a site survey. Once you have triggered the site survey, walk around the area intended to be covered by the transmitter making particular note of the quality of messages received by the test pager.

Capcode	Enter the cap code of the test pager that you wish to use in the site survey.
Interval	Enter the time between test messages sent out in seconds here.
Type	Enter the encoding type used on the pager. Choose between Alpha , Numeric , Tone Only , or Disabled .
Message	Enter the message text you would like to be sent when the site survey is performed. This text is sent to the pager with the entered cap code every time a site survey is performed. Please note that this field can hold a maximum of fourteen characters. The default text is "Site Survey."
Survey Enable	Enable this option to enable the site survey with the above settings.
Transmitter Test Enable	Enable this option to force the transmitter to send out a constant preamble signal. This is used when testing the transmitter on an RF test set.

NOTE: This test mode causes the transmitter to heat up rapidly. Do not use this test for extended periods of time as it may damage the transmitter.

Status

The status screen shows some useful statistics about the IntelPage IP unit.

Status	
Version	2.09
System Up Time	5 days, 01 hr 30 min
Memory Available	19506
POCSAG Queued	00000
POCSAG Sent	00006
POCSAG Busy	00000
LAN	10MB Half Duplex
UART Status	Rx:On Tx:On Rts:On Cts:Off
PT5 Temperature	33 °C
PT5 Supply	12.0 Volts

Version	The version of the firmware.
System Up Time	The duration the device has been on.
Memory Available	RAM that is available to store and send messages and server web pages.
POCSAG Queued	The number of messages that are queued and are waiting to be sent.
POCSAG Sent	The total number of messages sent since power on.
POCSAG Busy	The total number of messages that have failed to send due to the channel being busy.
UART Status	Indicates whether flow control is inhibiting the transmitting or receiving of data.
PT5 Temperature	Displays the current temperature of the internal transmitter.
PT5 Voltage	Displays the voltage that is driving the internal transmitter.

NOTE: The **PT5 Temperature** and **PT5 Voltage** fields will not be displayed if you ordered a transmitter with the busy detect option.

Licensing

This screen is used to configure Intelpage IP's license key. Some of the features on the Intelpage IP can be licensed. This means that they can be enabled or disabled by applying a new license key. License keys are generated and provided by Amcom Software. After you obtain a license key, enter the license key into the Intelpage IP by using the information below.

1. Choose the **License** menu option. The **License** screen displays.

License	
Enter Key	<input type="text"/>
Serial Number	304331
Options Enabled	RS-232 protocols Ethernet protocols TNPP
Current Key	001064472805299

fusion

INTELPAGEIP

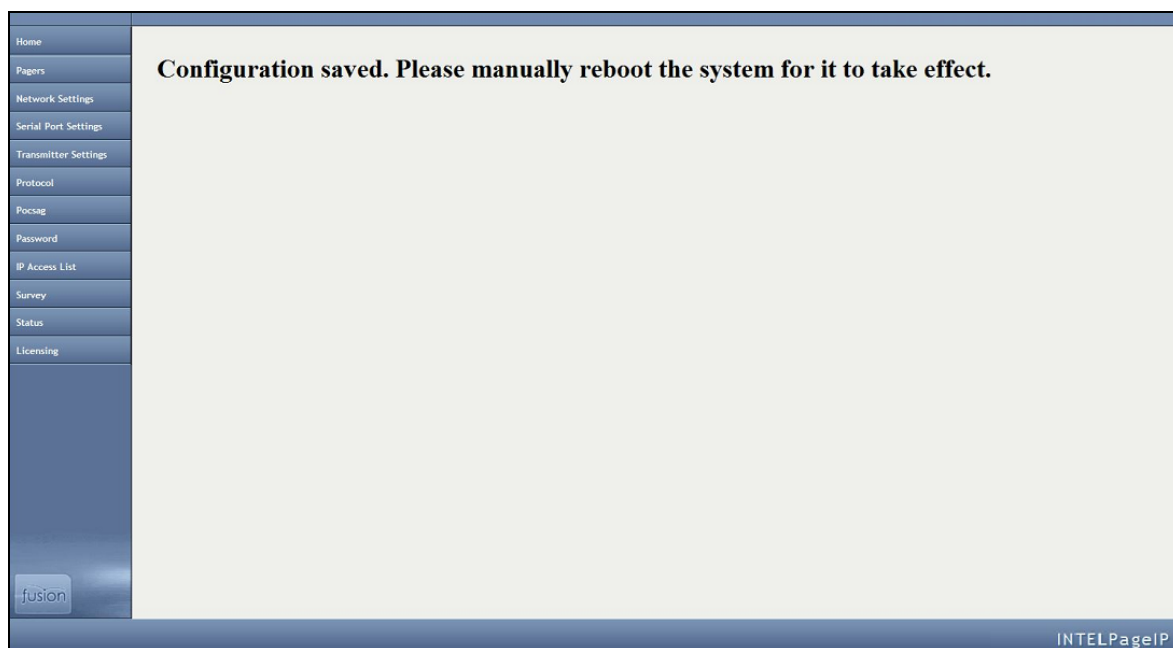
2. In the **Enter Key** field, enter the license key that you were given.
3. Click the **Save** button. The following screen displays.

Please wait, saving license.

fusion

INTELPAGEIP

After the entered license is saved, the following screen displays.



4. Reboot your system. After your system is rebooted, the changes come into effect.

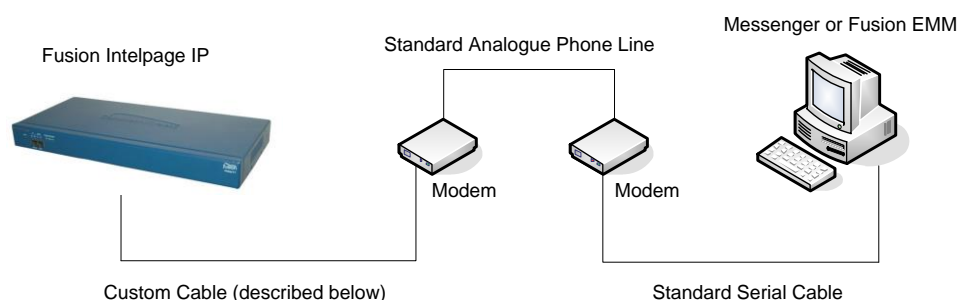
Configuration Examples

Configuration Examples

This section includes information on how to set up a dial-in TAP connection to the Intelpage IP from Messenger.

Setting up Dial-in TAP to Intelpage IP from Messenger

A TAP link can be created over an analog phone line between a Messenger Server or a Fusion EMM, and Intelpage IP for remote message capability. The system is setup as described below.



The Intelpage IP must have its RS232 port settings as follows:

- Serial Port Protocol Use = TAP
- Baud = 9600
- Parity = None
- Data bits = 8
- Stop bits = 1
- Flow control = None
- TAP Disable ID every 2 seconds = Yes

The modem connected to the Intelpage IP must be setup in the following way:

1. Connect this modem to a PC and use HyperTerminal (or any other communications package capable of communicating over a serial port) to execute the commands below:

AT&F	Ensures factory default settings.
ATS0=1	Enables auto answer (after 1 ring) ATS0=2 for 2 rings, etc.
ATV0	Turn off verbose mode (Responses are 0 instead of OK).
ATE0	Turns off local echo.
AT&W	Saves configuration to memory.

2. Power off the modem.
3. Connect the modem to the Intelpage IP unit.
4. A customized cable is required to connect the modem to the Intelpage IP unit. The simplest way is to use a RJ45-DB25 connector set and wire it with the following pinouts.

NOTE: If a connector set is not available, you can just make a cable with the pinouts in the table instead.



RJ45 Pin Number On Intelpage IP	Wire Color Inside RJ45-DB25 Adapter	Function	DB25 Pin Number
1			
2			
3	Black	DTR	20
4	Red	GND	7
5	Green	RX	3
6	Yellow	TX	2
7	Brown	CTS	5
8	White	RTS	4

The modem connected to the Messenger PC must be setup in the following way:

1. Connect the modem to the PC using a standard serial cable.
2. Setup a TAP contact as normal. The default Messenger TAP gateway works for this purpose. Please note that the telephone number must be entered into the **Phone** field.
3. Edit any settings, as desired.

Appendix

Appendix

This section covers technical information for the Intelpage IP system, including:

Configuring Network Settings Through Terminal Interface

“Configuring Network Settings Through Terminal Interface” on page 30 includes information on how to configure network settings through a terminal interface.

Transmitters

“Transmitters” on page 34 includes information on how to install multiple transmitters and aerials for the Intelpage IP system.

Types of Antennas

“Types of Antennas” on page 35 includes information on the types of antennas that can be used with the Intelpage IP system.

Technical Specifications

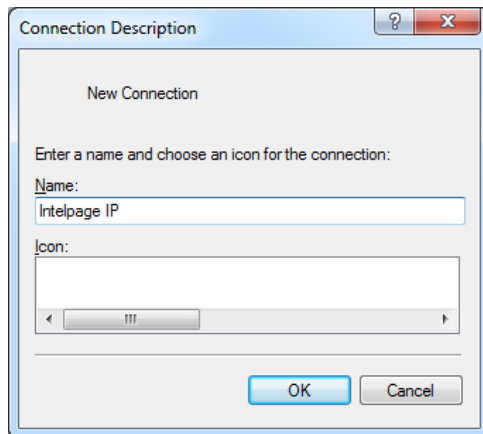
“Technical Specifications” on page 36 includes technical specification information for the Intelpage IP product.

Configuring Network Settings Through the Terminal Interface

NOTE: HyperTerminal is used as the terminal emulator in this example. If it is not installed, it can be added by changing your Windows settings. Other terminal programs such as “Putty” may be used.

1. Using the supplied black Fusion cable, connect the Intelpage IP’s COM1 RS232 port to a spare serial port on your PC.
2. Make sure that the power is not currently plugged into the Intelpage IP unit at this stage.
3. Start **HyperTerminal**. It can generally be found from the Windows **Start** menu by choosing **Start|Programs|Accessories|Communications|HyperTerminal**.
4. In the **Connection Description** window, add a name for the entry (such as Intelpage IP).

5. Click the **OK** button.

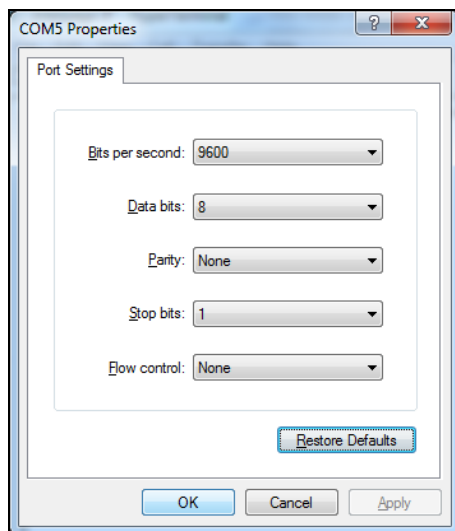


6. In the **Connect To** window, go to **Connect Using**.
7. Scroll to your serial port (normally COM1 or COM2). Usually, this information is written next to the serial port on the back of the computer.

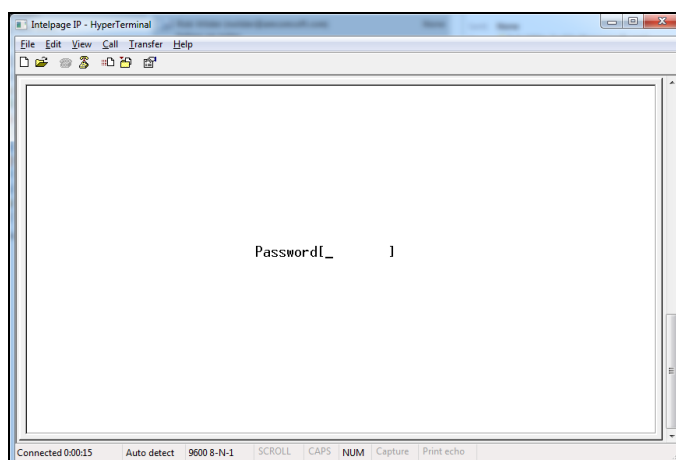


8. Click the **OK** button.

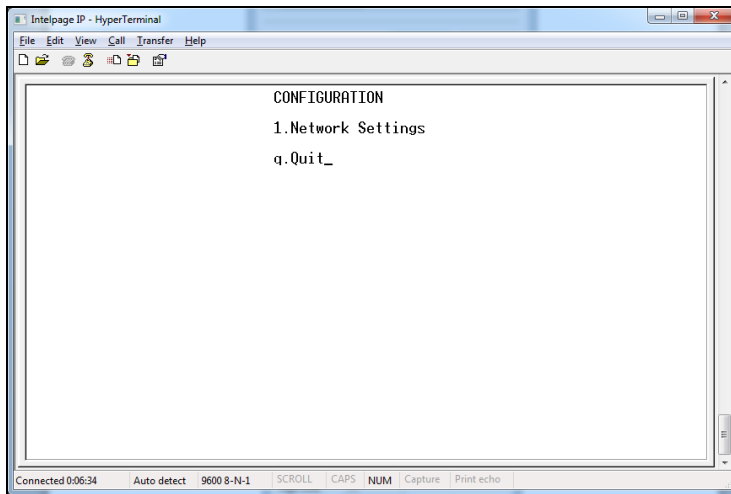
9. At the COM port properties window, click the **Restore Defaults** button. This automatically updates the screen with the correct settings below.
- **Bits per second** – Matches the Intelpage IP (default is 9600)
 - **Data bits** - 8
 - **Parity** - None
 - **Stop bits** - 1
 - **Flow control** - None



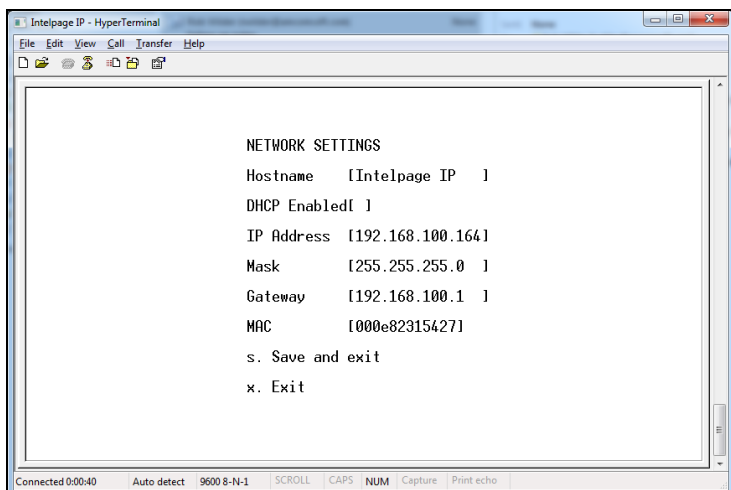
10. When the correct settings are entered, click the **OK** button to proceed. If no errors were encountered, HyperTerminal displays **Connected** in the bottom left corner (status bar).
11. At this point, connect the power to the Intelpage IP unit. Within five seconds, click the **Escape** key four times to bring up a password request screen as shown below.
12. By default, the password is just blank. Click **Enter** to proceed. If the password request screen does not display, check the serial cable and connection settings.



13. From the **Main** menu, press the number **1** key to choose **Network Settings**.



14. The following screen is shown. Use the **TAB** or **Enter** key to navigate between the various fields on the screen.



Hostname	Allows you to assign a name to the Intelpage IP on the network. This name displays in the IPDiscover utility. Giving a unique name allows multiple IP based Fusion series devices to be easily located and managed.
DHCP Enabled	Click the Space Bar to enable or disable this field. By default this option is enabled, which means that when turned on, your Intelpage IP attempts to contact a DHCP server on the network that it is connected to in order to gain an IP Address. The supplied IPDiscover utility can then be used to locate units on your network. In some situations, such as if your network has no DHCP server or when interfacing with EMM, Messenger, or TIM, the Intelpage IP may need a fixed IP address. In this case, you need to fill in the IP Address , Mask , and Gateway fields.
IP Address	The IP address of the Intelpage IP unit.
Mask	The network mask of the network you are connected to.
Gateway	If the device needs to access the internet or another network, the gateway is the route used to reach the external network.

MAC	This is the Intelpage IP's unique hardware number on the network. The Media Access Control address is factory set and should not need to be changed.
------------	--

NOTE: The **IP Address**, **Mask**, and **Gateway** fields display the current settings. If DHCP is enabled, any changes to the fields are not saved as they are server assigned.

NOTE: Care should be taken if altering the MAC address, as it can result in the unit no longer being addressable.

15. Once configuration is complete, click the **s** key to save changes and return you to the **Main** menu.
16. The Intelpage IP should be power cycled if any changes were made to its network settings.

Transmitters

Thick steel and concrete, large magnetic and electric fields, and terrain and weather conditions affect transmitter efficiency. Because of this, you need to test the coverage of your local area transmitter during installation.

When you perform the test, you should pay particular attention to the quality of the messages that you receive on the test pager. If you receive corrupted messages, it is possible that you have problems sending messages to that region.

If you find that you are receiving corrupt messages, you should consider the following methods for improving transmission quality:

- Move the antenna to a position that gives it a clear line of site to all areas you wish to cover.
- Reduce the length of the cable connecting the aerial to the transmitter.
- Use the appropriate coaxial cable to connect the aerial to the transmitter which suits the length of the cable run. For example, use RG213 for runs up to 20 meters and use LDF440 for runs over 20 meters.
- Choose another type of antenna for the transmitter.
- Position the antenna in a higher location or use an antenna with a higher gain.

Increase the transmitter power. There are a number of objections to this method, such as local restrictions on aerial power. In addition, doubling the transmitter power to the aerial only gives an increase in range of a factor of 1:19 (fourth root).

Installing Multiple Transmitters and Aerials

For buildings in an area with good field strength outside but weak reception within, possibly caused by shielding due to reinforcement in suspended slabs, metal plating and other building materials:

- The supply lead to the aerial can serve as a radiator, effectively providing a 5 meter (yard) range from the cable.
- The supply from open (leaky) coaxial cable as a line radiator lead to a 50 Ω terminator (the cable is in effect the aerial).

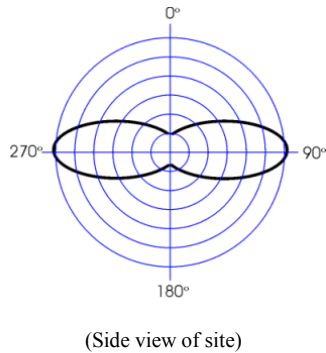
VSWR

VSWR is a measure of impedance mismatch between the transmission line and its load. The higher the VSWR is, the greater the mismatch. A high VSWR means some of the transmitted signal is being reflected at the antenna, back down the coax line and back into the transmitter itself. If this value is too high, the amount of power reflected back into the transmitter can damage the transmitter. The minimum VSWR, i.e., that which corresponds to a perfect impedance match is 1. It is essential that the VSRW of the antenna and coax connected to the amplifier is set to 1.5 or better using a SWR meter. If this test is skipped, permanent damage may result to the amplifier. Damage also occurs to the unit if the amplifier is set to transmit if no antenna is connected to the unit. To transmit without an antenna connected to the unit, use a dummy load capable of handling at least that of the transmitter output.

Types of Antennas

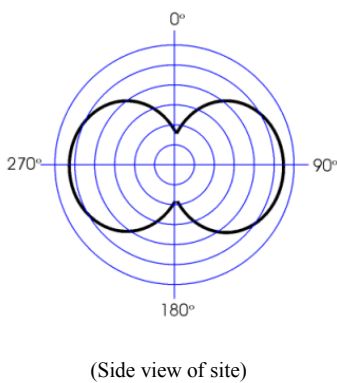
Co-linear

Co-linear antennas are most suited for installations which require maximum range. The general coverage pattern for this type of antenna is shown below.



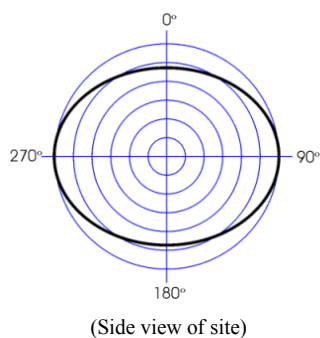
Mopole

Mopole antennas are most suited for installations that require good building penetration and range. It is a good general purpose antenna. The general coverage pattern for this type of antenna is shown below.



Side Mounted / Unity Gain Dipole

Dipole antennas are most suited for installations which require excellent building penetration. The general coverage pattern for this type of antenna is shown below.



Technical Specifications

Please note that the specifications are subject to change without notice.

General

Equipment Type	IP and Serial based POCSAG paging encoder/transmitter
Frequency Range	VHF 148-174MHz. UHF 440-470MHz Synthesized
LED Indicators	Power, PTT, Data, CD (Busy), RS232 Tx, RS232 Rx, IP Activity, IP Link
External Connectors	Ethernet: RJ45F 10 Mbps Serial: RJ45F RS232C 300-57600 Baud (default 9600bps)
Recipient Capacity	1000 pagers (with pager ID's 0-999 available)
Supported Protocols	POCSAG 512/1200/2400bps TAP (PET, IXO) / COMP1, 2 / SCOPE / TNPP / Terminal / Tekk (Waveware)
Duty Cycle	50%
Ambient Temperature Operating Range	0 to 50°C (20-90% RH non condensing)
Storage Temperature Range	-10 to 60°C (10-95% RH non condensing)

Desktop Version Specific

Internal Transmitter	Adjustable from 100mW-5W (4W default)
Power Supply	12VDC @ 2Amps regulated via 2.1mm DC socket Supplied with mains adapter 110-240VAC (autosensing) 50/60Hz 25W max
External Connectors	Antenna: BNC F 50Ω
Dimensions	255 x 230 x 70 mm / 10 x 8 x 2.7 inches
Weight	700g / 1.5lb nett

5 Watt Rack Version Specific

Internal Transmitter	Adjustable from 100mW-5W (4W default)
Power Supply	110-240VAC (autosensing) 50/60Hz 25W max, Via IEC mains socket
External Connectors	Antenna: N-type F 50Ω
Dimensions	Standard 1RU 19 inch rack case 439 x 205 x 44 mm / 17.3 x 8.1 x 1.7 inches (without rack ears)
Weight	2.7kg / 5.9lb nett

High Power Version Specific

Internal Transmitter	25, 50 or 100W ($\pm 10\%$) driven by 1-4W exciter
Power Supply	110 or 240VAC 50/60Hz 350W max, Via IEC mains socket Henry 25W amplifier :13.8V DC nominal, 6amp maximum during transmit.
External Connectors	Antenna: N-type F 50 Ω
Dimensions	Standard 2RU 19 inch rack case 439 x 430 x 88 mm / 19 x 16.5 x 3.4 inches
Weight	25 Watt unit: 7.0 kg / 15.4lb 50 Watt unit: 9.5 kg / 21.0lb 100 Watt unit: 9.5 kg / 21.0lb

Fcc Statement

This equipment has been tested and found to comply with the limits for a Class B digital device, pursuant to Part 15 of the FCC Rules. These limits are designed to provide reasonable protection against harmful interference in a residential installation. This equipment generates uses and can radiate radio frequency energy and, if not installed and used in accordance with the instructions, may cause harmful interference to radio communications. However, there is no guarantee that interference will not occur in a particular installation. If this equipment does cause harmful interference to radio or television reception, which can be determined by turning the equipment off and on, the user is encouraged to try to correct the interference by one or more of the following measures:

- Reorient or relocate the receiving antenna.
- Increase the separation between the equipment and receiver.
- Connect the equipment into an outlet on a circuit different from that to Which the receiver is connected. - Consult the dealer or an experienced radio/TV technician for help

CAUTION: The antenna(s) used for this transmitter must not be co-located or operating in conjunction with any other transmitter/antenna system. The antenna should be mounted so as to maintain a distance of at least 89CM between the antenna and bystanders, when operated in a typical installation and a 4 dBi antenna.