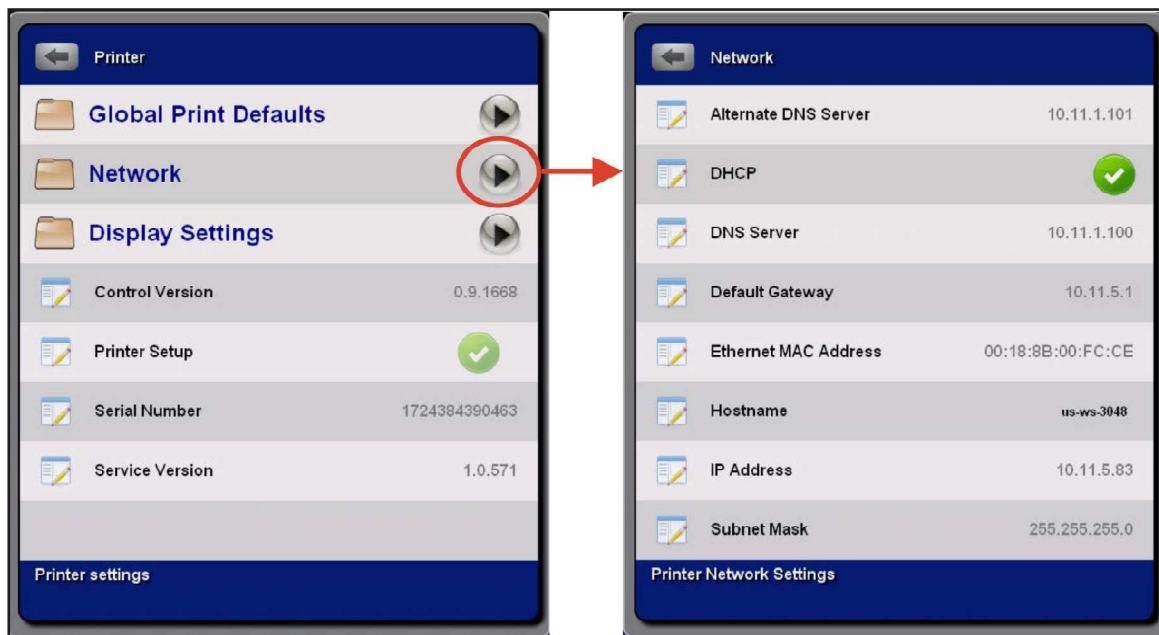


3. The scale factors can be changed from this screen. For example, to change the scale factor for the X axis from 1 to 1.2:
 - a. On the display, touch the **1** displayed for **X**. The keyboard appears.
 - b. Touch the decimal point and then the **2**.
 - c. Touch the return key.
4. The scale factors can be changed from this screen. For example, to change the scale factor for the X axis from 1 to 1.2:

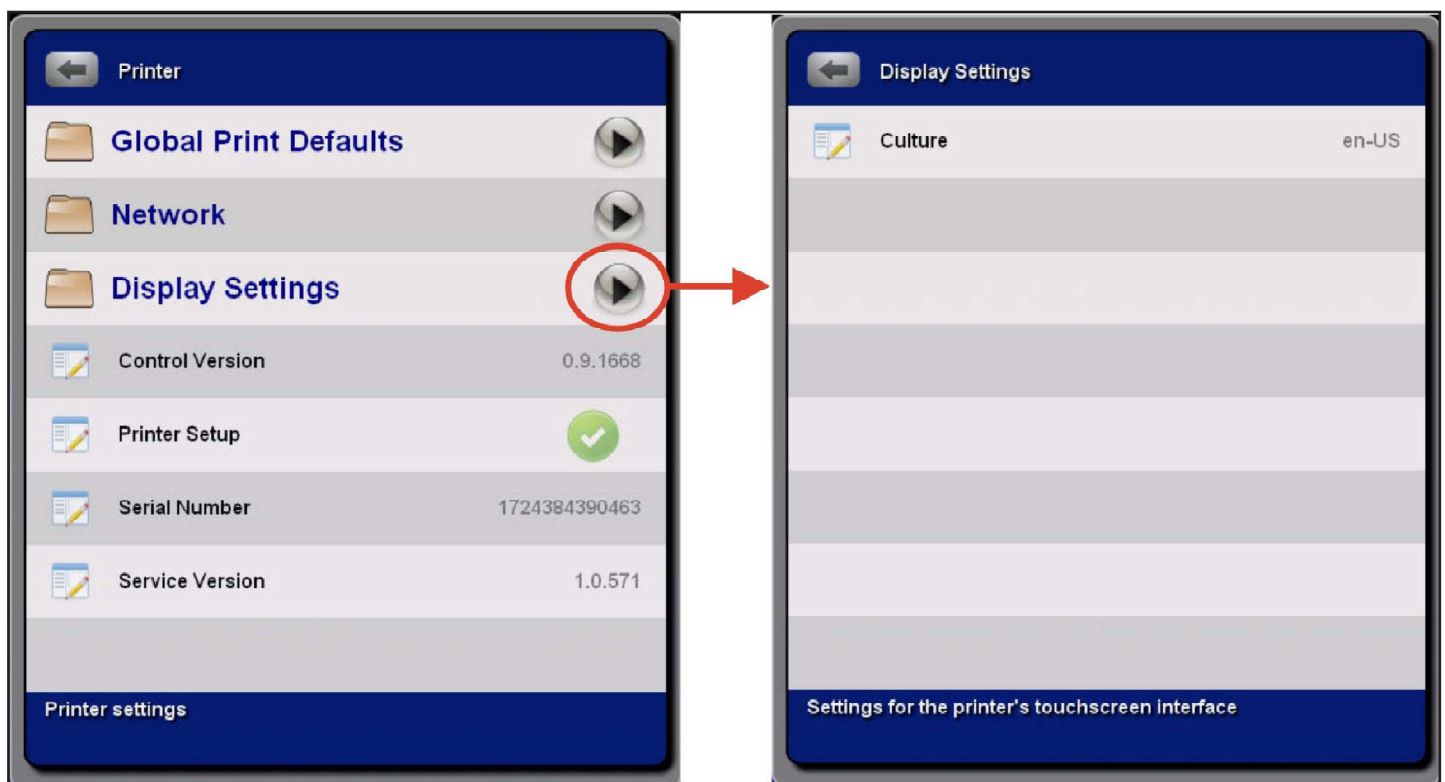


Network

5. Touch **Network** to display the network settings for the Projet™ 6000. Only the **Ethernet MAC Address** and the **Hostname** can be changed from this display. The remainder of the panel is for information only and those settings must be changed in Windows.

Display Settings

6. Touch **Display Settings** to display the display settings for the Projet™ 6000. This panel is for information only. The settings must be changed in Windows.



USER SETTINGS

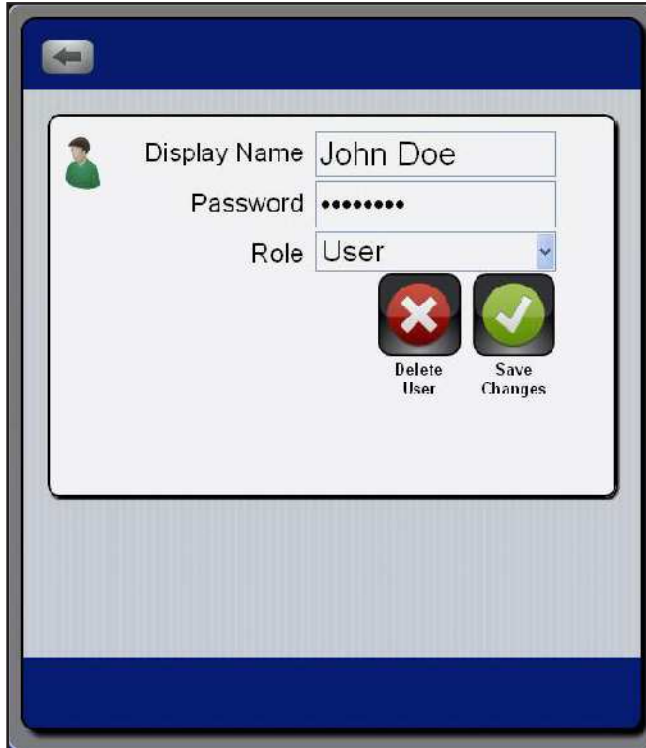
The **User Settings** screen is accessed from the **Settings** screen as shown.



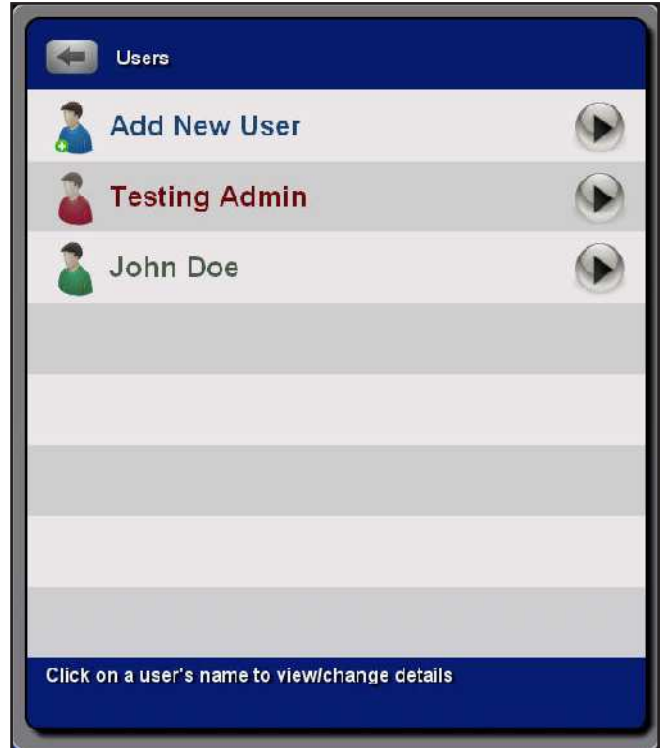
1. To add new users to the Projet 6000, press **Add New User**.
2. Add the new user name.
 - a. The **Login** is the username when logging in but the display name is displayed everywhere else.
 - b. Press the **Login** field.
3. A keyboard is displayed.
 - a. Enter the name of the new user.
 - b. Press **Enter**



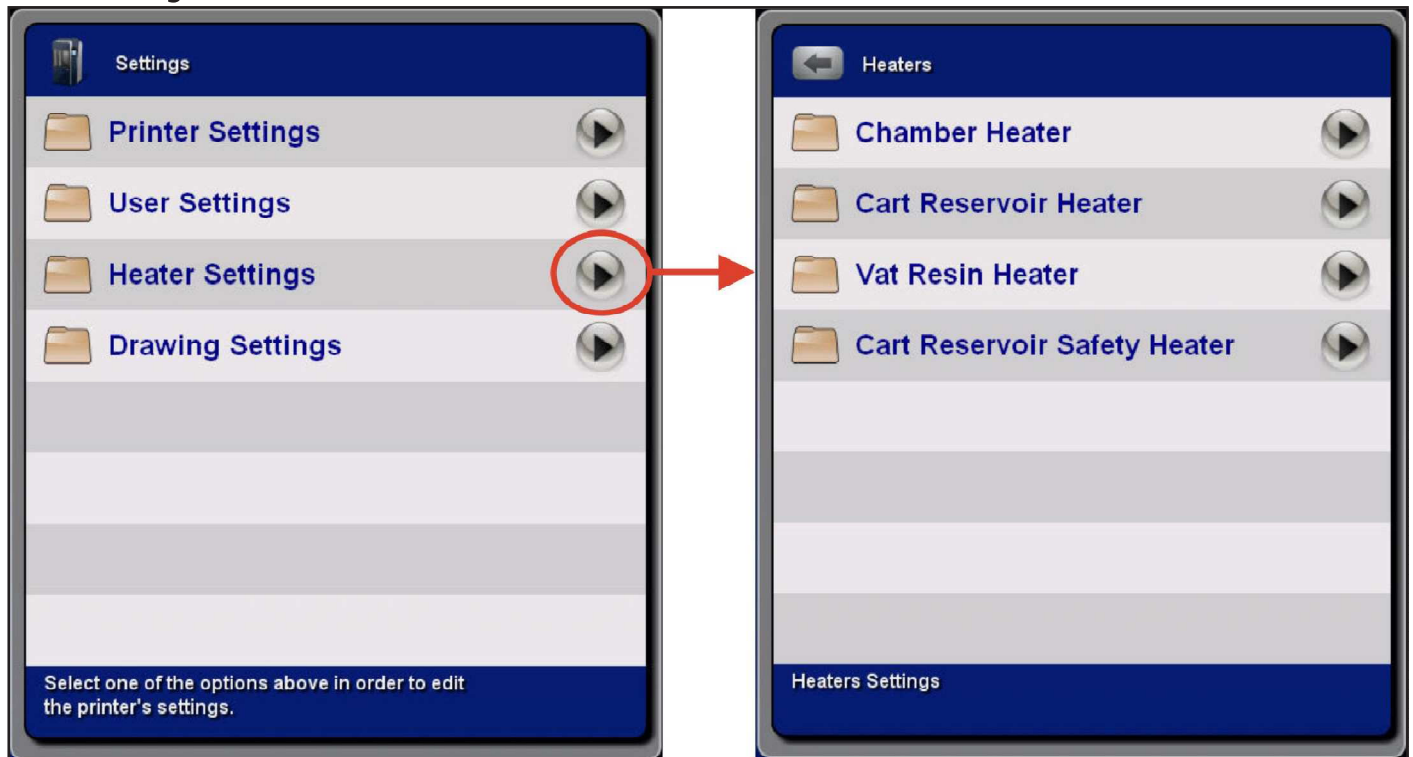
- c. Press **Add User**
4. Press the **Password** field and the keyboard is displayed.
 - a. Key in the password.
 - b. Press **Enter**.
 - c. Select the type of user from the **Role** pull-down.
 - d. Press **Save Changes**.
5. The screen will return to the **Users** screen with the new user displayed.



A screenshot of a mobile application's 'Add User' form. The form is enclosed in a white box with a thin black border. It features three input fields: 'Display Name' with the text 'John Doe', 'Password' with masked characters '.....', and 'Role' with a dropdown menu showing 'User'. Below these fields are two buttons: a red button with a white 'X' labeled 'Delete User' and a green button with a white checkmark labeled 'Save Changes'. A small user icon is visible to the left of the 'Display Name' field. The background of the app is blue.



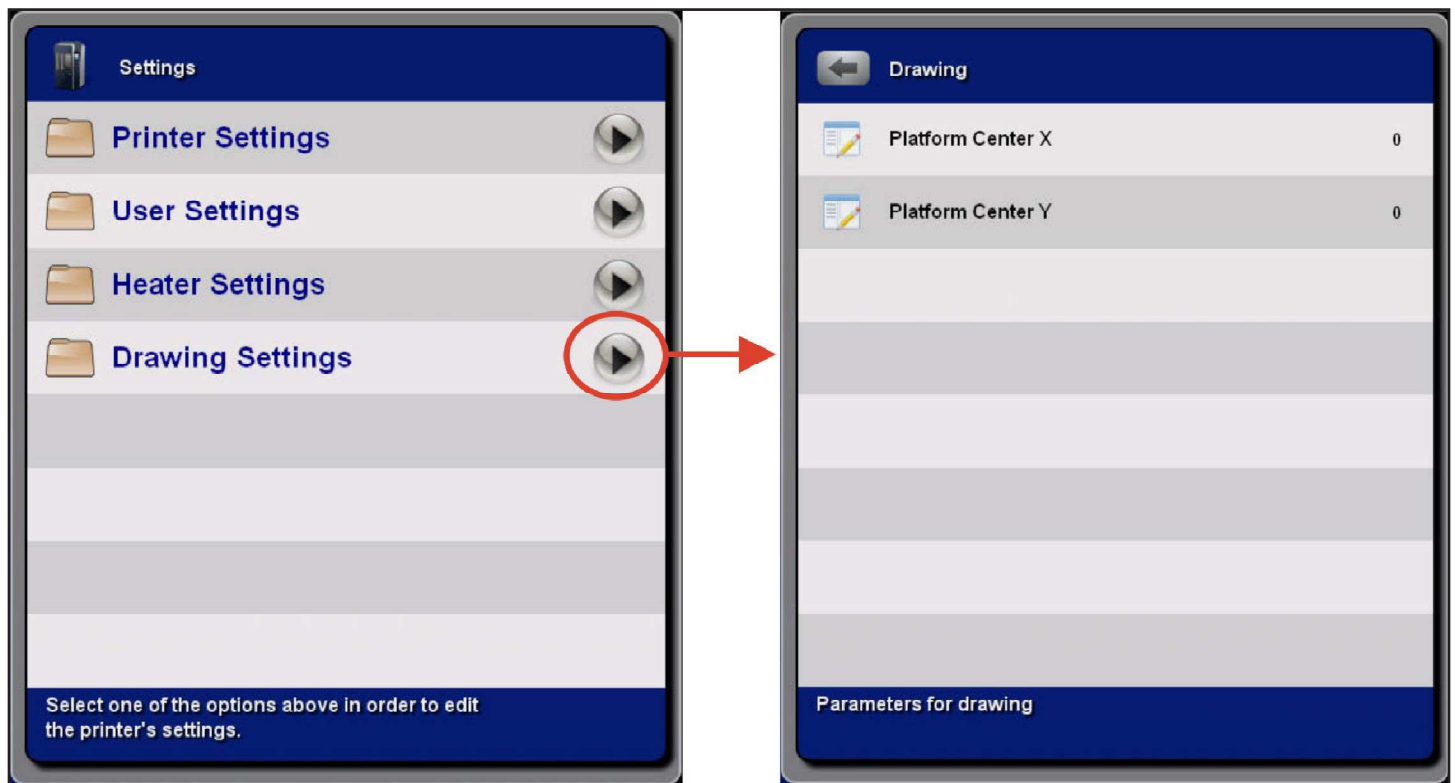
Heater Settings



Each control allows the user to set the **Setpoint** for that particular system.

Controller	Function
Chamber Heater	Set the Setpoint temperature for the build chamber.
Cart Reservoir Heater	Set the Setpoint temperature for the resin in the cart reservoir.
Vat Resin Heater	Set the Setpoint temperature for the resin in the print tray.
Cart Reservoir Safety Heater	This is a safety setting. This sets the upper limit allowed for the resin temperature in the cart reservoir. When the resin temperature reaches the upper limit, the cart reservoir heater is switched off.

Drawing Settings

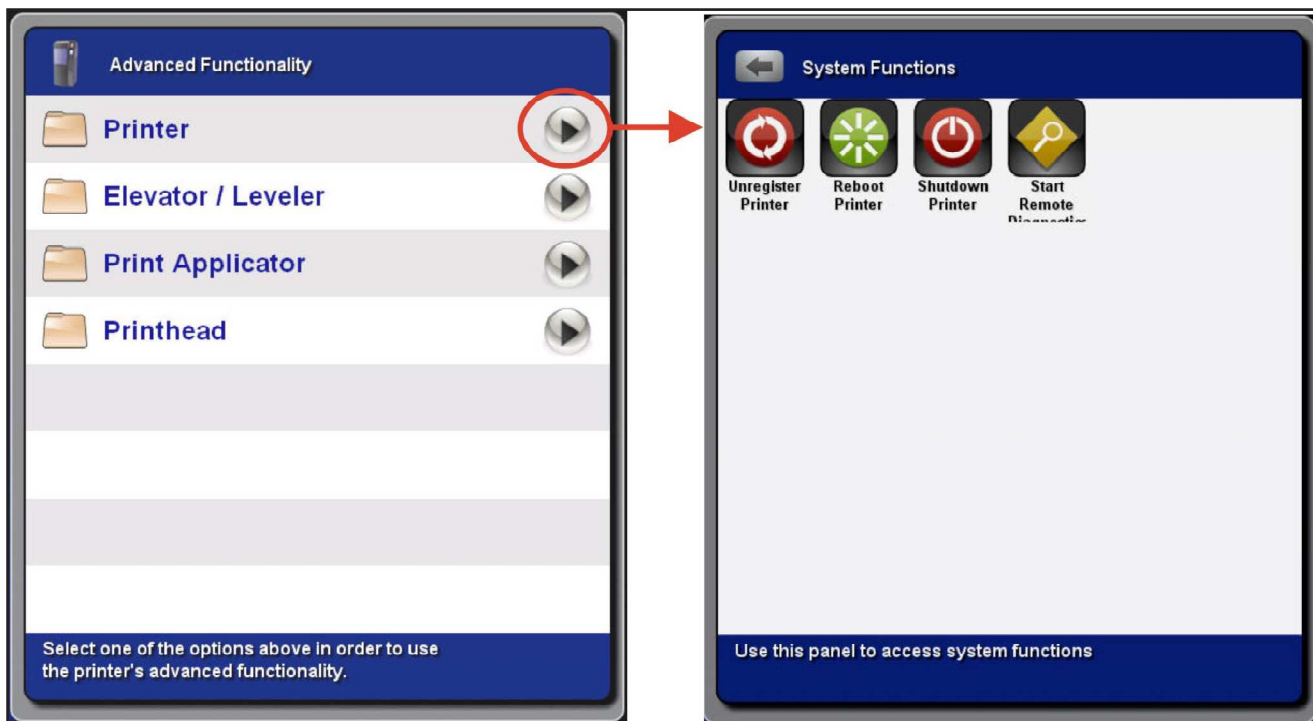


Control	Function
Platform Center X	Allows the user to manually enter an offset for the center of the build platform in the X axis
Platform Center Y	Allows the user to manually enter an offset for the center of the build platform in the Y axis

ADVANCED

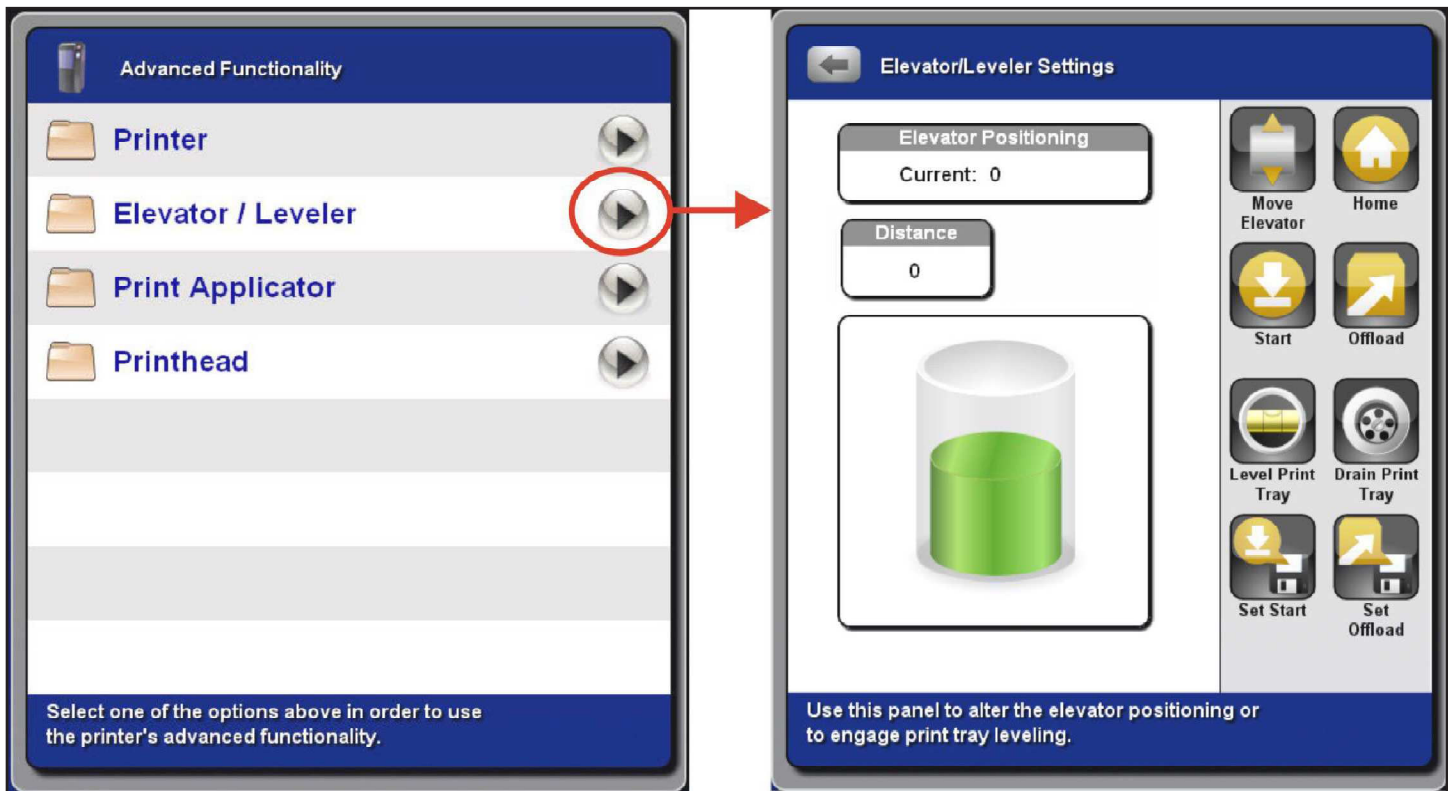


Printer



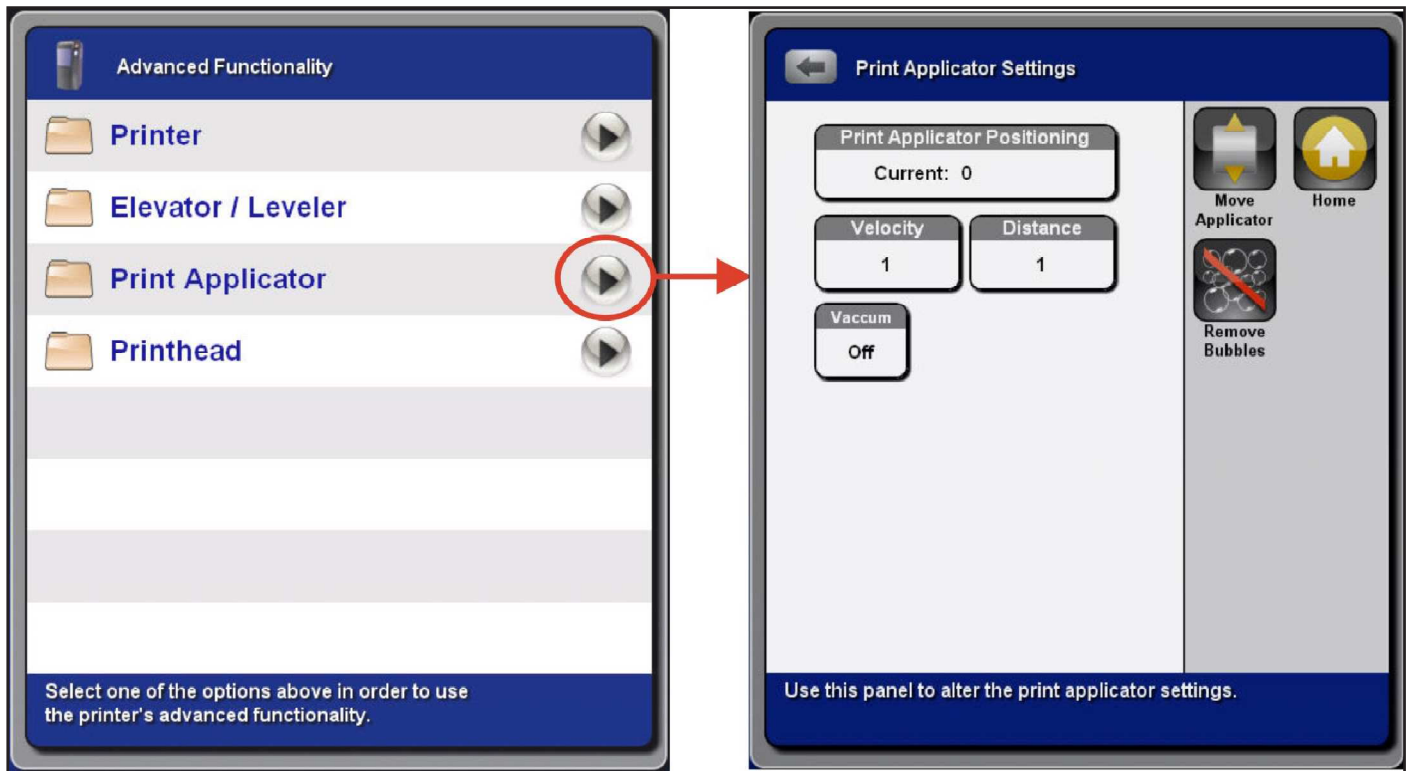
Control/Indicator	Function
Unregister Printer	Removes all customer information from the printer.
Reboot Printer	Reboots (restarts) the printer.
Shutdown Printer	Switches the printer off.
Start Remote Diagnostics	

Elevator-Leveler



Control/Indicator	Function
Elevator Positioning	Shows the current position of the elevator relative to the home position.
Velocity	Specifies the elevator speed in inches per second during manual motion; it does not affect motion during the move.
Distance	Specifies distance, in inches, from current position; negative moves elevator down, positive moves elevator up.
Move Elevator	Manually moves elevator at the Distance specified.
Home	Moves the elevator to the home switch and redefines the home position (relative zero position of the elevator).
Start	Moves the elevator to the Start position, as defined by Set Start.
Offload	Moves the elevator to the Offload position.
Level Print Tray	Levels the material in the print tray. If empty, fills the print tray with material.
Drain Print Tray	Drains all material from the print tray.
Set Start	Saves the elevator's current location as the Start position.
Set Offload	Saves the elevator's current location as the Offload position.

Print Applicator

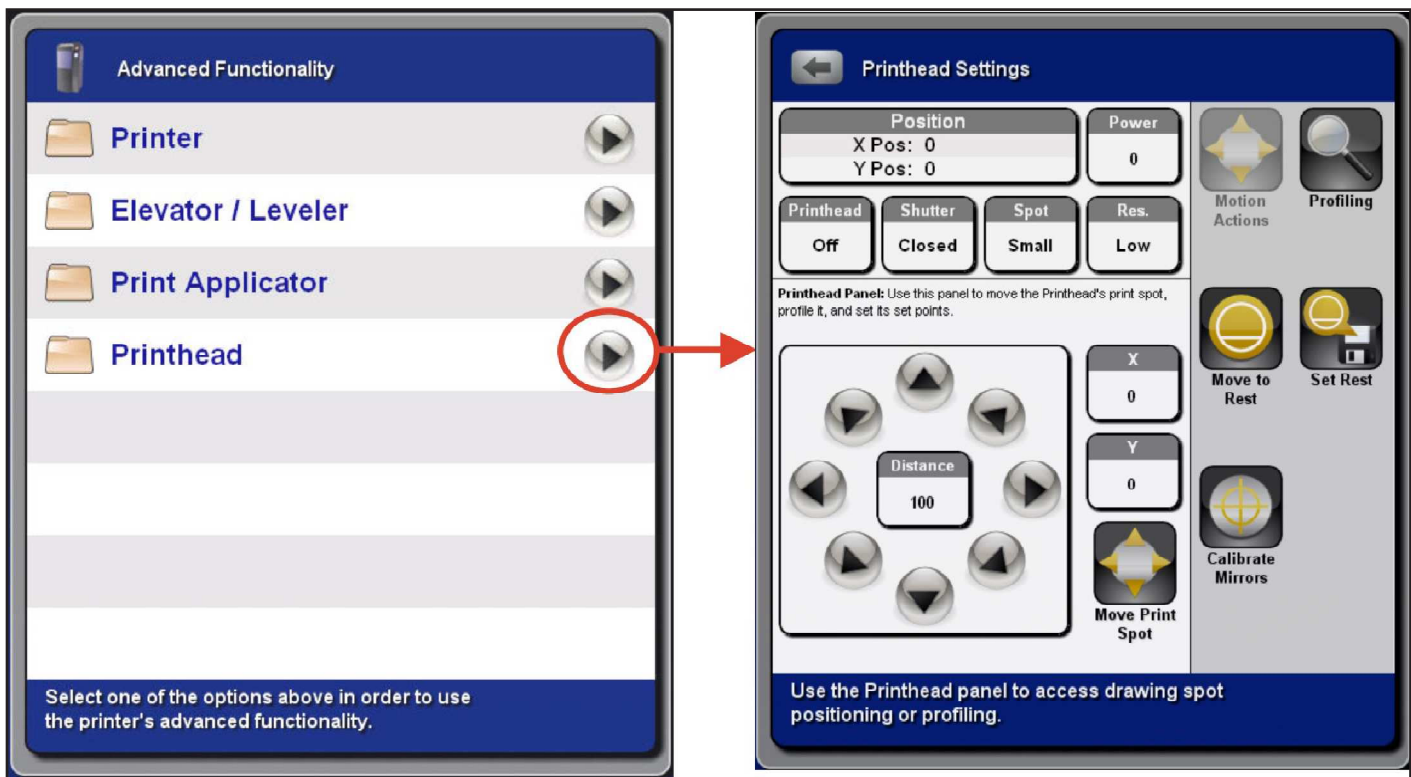


Control/Indicator	Function
Print Applicator Positioning	Shows the current position of the print applicator relative to the home position.
Velocity	Specifies the applicator speed, in inches per second, during manual motion. This setting does not affect the applicator speed during the build.
Distance	Distance in inches to move.
Vacuum	Switch vacuum for the applicator On or Off.
Move Applicator	Manually moves print applicator as specified by the user, with velocity/distance.
Home	Moves the applicator motion axis to the home position and redefines the home position (relative zero position of the applicator).
Remove Bubbles	Manually starts the routine for removing bubbles.



NOTE: The default Visijet material heater settings can be found in the Visijet® SL Materials for ProJet™ 6000 Systems - Part Building and Post-Processing.

Printhead



Control/Indicator	Function
Position	Current X Position and Y Position of the beam in mirror counts.
Power	Requested laser power.
Printhead	Switch the laser On or Off.
Shutter	Open and close the shutter.
Spot	Set the IPM to the small or large spot focus position.
Res.	System Mode, select High or Low.
Motion Actions	Select Motion Actions mode. See table below for more information.
Profiling	Select Beam Profiling mode. See table below for more information.
Move to Rest	Moves the beam to the rest position.
Set Rest	Set the rest position for the beam.
Calibrate Mirrors	Presently not enabled.

When **Motion Actions** is selected, the panel displays the functions outlined in red.

Control/Indicator	Function
X	Specifies the absolute coordinate for X in mirror counts.
Y	Specifies the absolute coordinate for Y in mirror counts.
Move Print Spot	Move beam to the position specified by X and Y .
Distance	Defines the distance increment when moving the beam with the arrow buttons. To move the beam faster, use a larger value. For fine movement, use a smaller value.



Arrow keys move the beam in the specified direction.

When **Profiling** is selected, the panel displays the functions outlined in red.

Control/Indicator	Function
X Width	Shows the beam width, in mils, in the X direction.
Y Width	Shows the beam width, in mils, in the Y direction.
Max ADC	Shows the maximum intensity of the beam.
Peak Sum	Indicates how well the beam is focused; the higher the value, the better the focus.
Profile at pinhole	Perform a profile of the Printhead's drawing spot at the specified pinhole.
Find Pinholes	Call this action once the Printhead's drawing spot is on the profiler to have the Printer find all the profiler pinholes.

