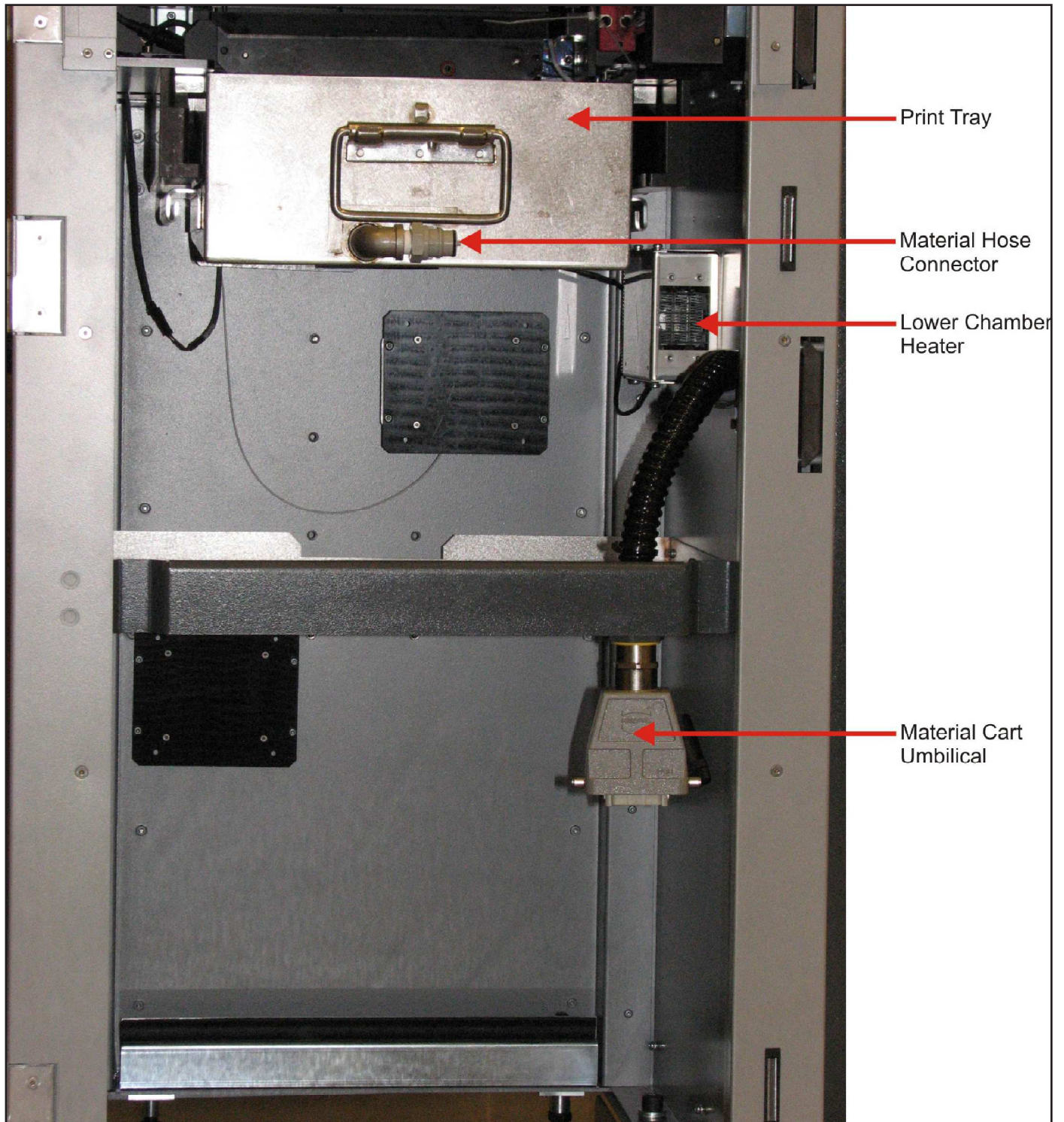
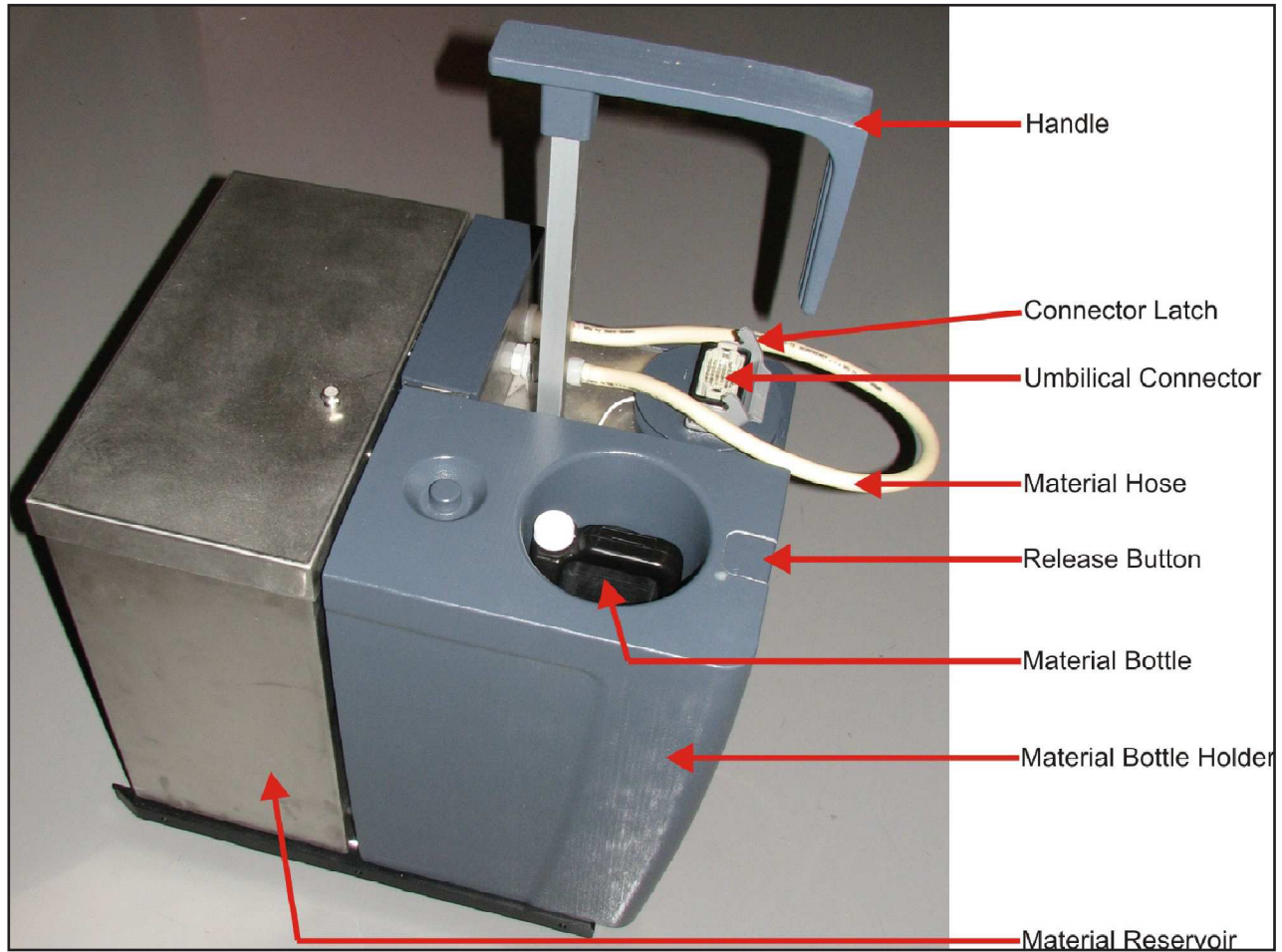


LOWER BUILD CHAMBER



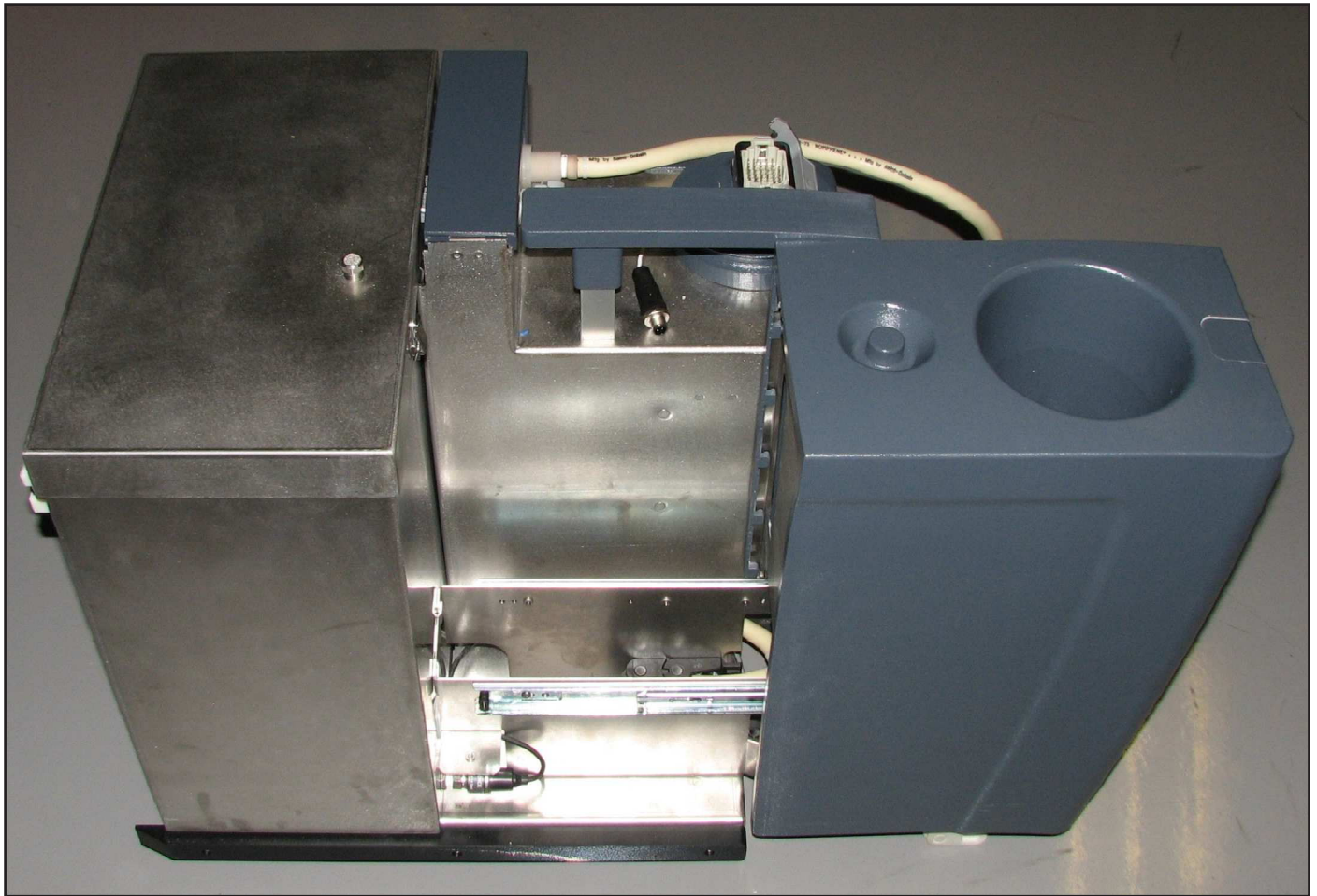
Item	Function
Print Tray	Contains the print material used during the build process.
Lower Chamber Heater	Provides a controlled temperature for the build chamber and material.
Material Cart Umbilical	Provides power and control signals to the material cart.

MATERIAL CART

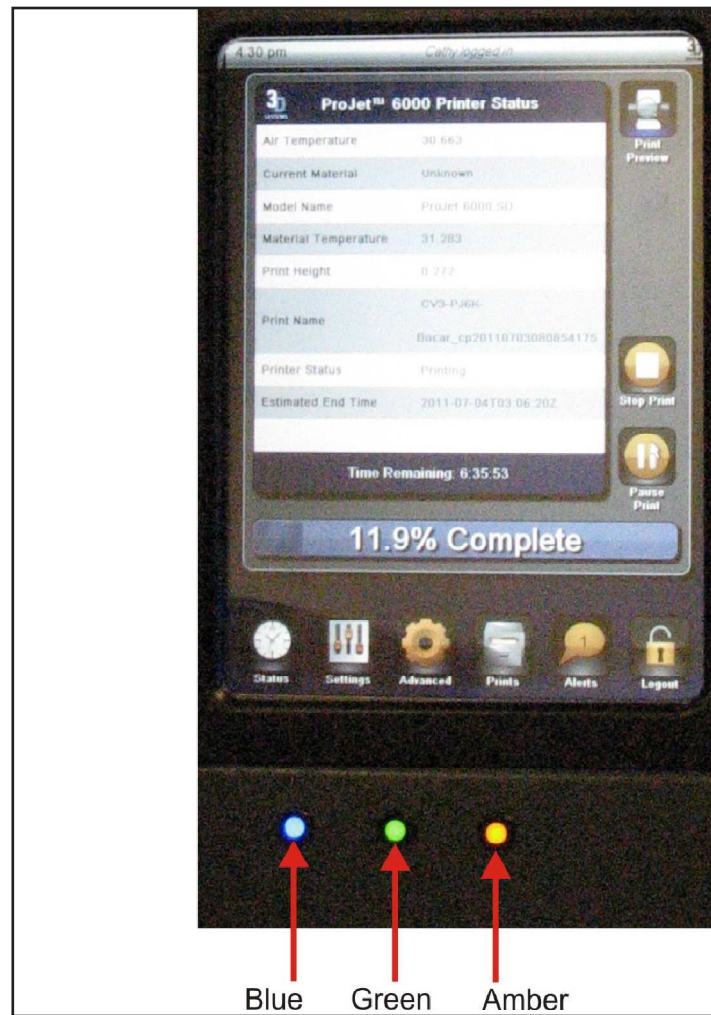


Item	Function
Handle	Can be raised and lowered for moving the material cart.
Connector Latch	Secures umbilical from the machine to the material cart connector.
Umbilical Connector	Umbilical from the machine is connected here to provided power and control signals to the material cart.
Material Hose	Connects the material cart to the print tray. Material is pumped through the material hose to add or remove material from the print tray.
Release Button	Press to extend the material bottle holder. Allows user to change material bottles without removing the material cart from the machine. See figure below.
Material Bottle	Material bottles provide new material for the system. The material cart pump transfers material from the material bottles to the material reservoir.
Material Bottle Holder	Holds material bottles. Material bottles are seated onto the coupling in the bottom of the holder. Flexible tubing connects the material bottle to the material reservoir.
Material Reservoir	Holds the material needed to fill the print tray for initial filling and during normal operation.

Material Cart with Bottle Holder Extended



FRONT PANEL INDICATORS



Blue LED - Laser

State	Indication
Off	Laser is off.
Flashing	Blue LED does not flash.
On	Laser is enabled.

Green LED - Control

State	Indication
Off	Control systems are not enabled. The machine is not ready for use.
Flashing	Machine is in Bypass Mode.
On	Control systems are enabled. The machine is ready for use.

Amber LED - System

State	Indication
Off	All safety and interlock systems have not been satisfied. Laser safety shutter is not operational.
Flashing	Amber LED does not flash.
On	All safety and interlock systems have been satisfied. Laser safety shutter is operational.

4 USER INTERFACE



NOTE: Please see the section [New Features for Firmware v1.6.2846](#) on pg. 46 to view updated options and functions in the ProJet 6000 GUI.

OPENING SCREEN AND LOGIN



1. After the machine is powered up, the opening screen is displayed. To begin the login process, touch the [Login](#) icon.



2. The login screen is displayed. Touch the **Username** field.
3. A keyboard is displayed. Enter your username and password.
 - a. Key in your username.
 - b. Press **Enter**.
 - c. Key in your password.



- d. Press **Enter**.
 - e. Touch the **Submit** icon.
4. After logging in, the **Status** screen is displayed initially.

This screen provides the operational status of the machine. The details of this screen are explained in section **Status**.

The six icons located at the bottom of the screen provide access to all of the functionality of the ProJet™ 6000. The sections that follow (see below), provide a detailed description of all functions, controls and indicators which are available on the ProJet™ 6000.





Controller/Indicator	Function
Air Temperature	Air temperature inside the build chamber.
Current Material	Material type presently in the cart and print tray.
Model Name	Specific model of ProJet™ 6000.
Material Temperature	Temperature of the material in the print tray.
Print Height	Height of print job in the Z axis.
Print Name	Name of print file presently building.
Printer Status	Present status of the ProJet™ 6000.
Estimated End Time	Estimated time the present build will end.
Print Preview	Allows you to view the current layer and delete parts if the build is paused.
Printer Action	Displays the present action of the printer (Profiling, Drawing, etc.)
Stop Print	Stop building the present print job.
Start Print	Starts a print job or re-starts a suspended build job Start becomes Resume when paused.

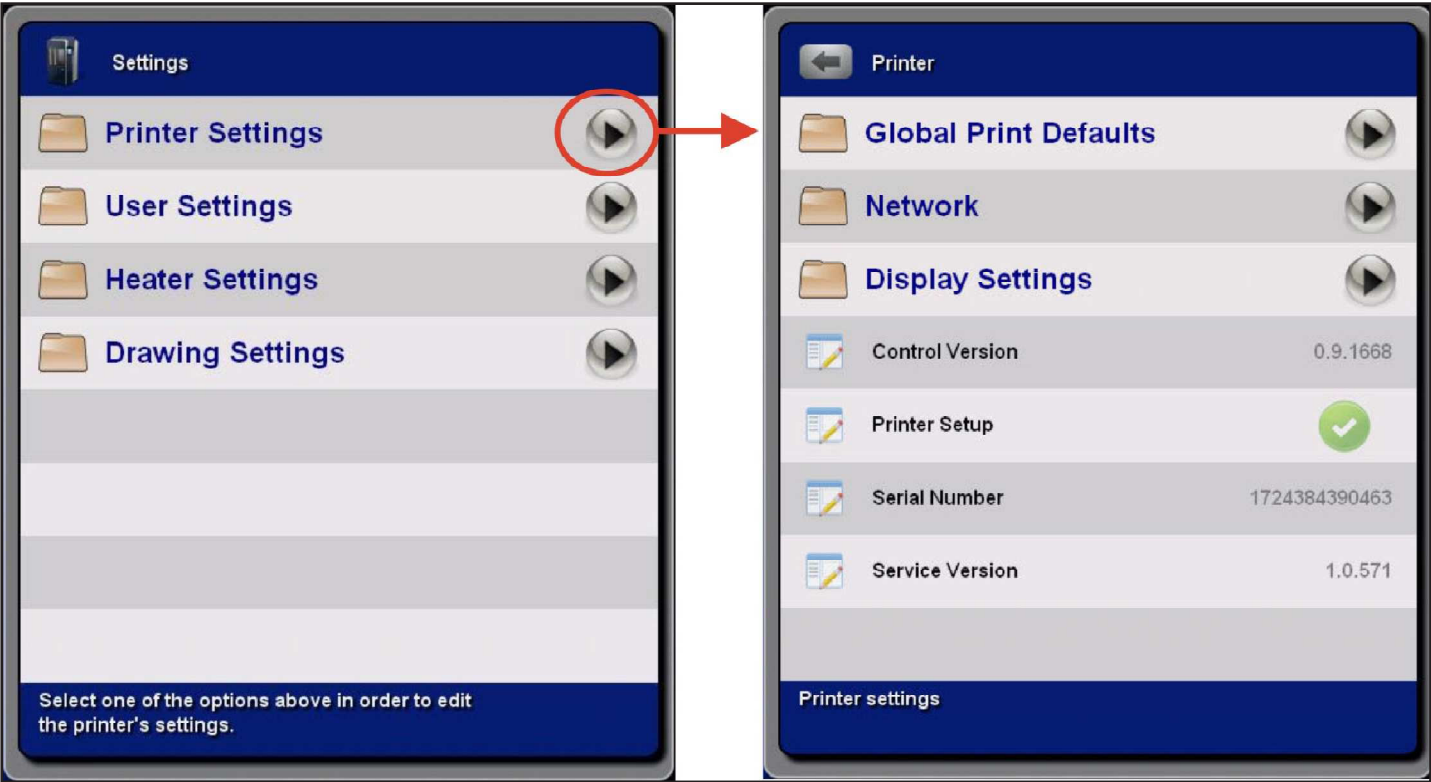
SETTINGS

The following sections describe the functionality of the [Settings Screen](#).



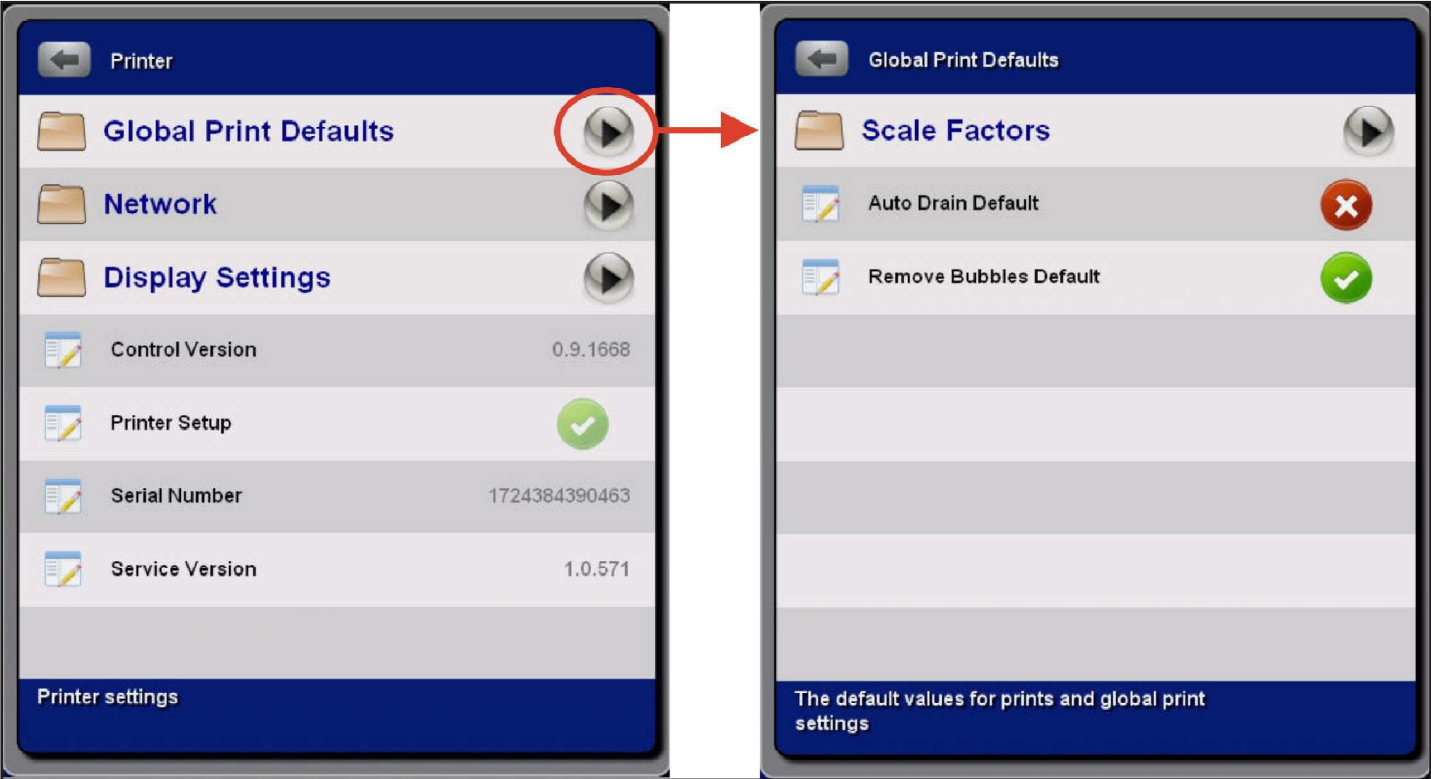
PRINTER

Printer Settings provides access to Global Print Settings, Network and Display Settings for the ProJet™ 6000.



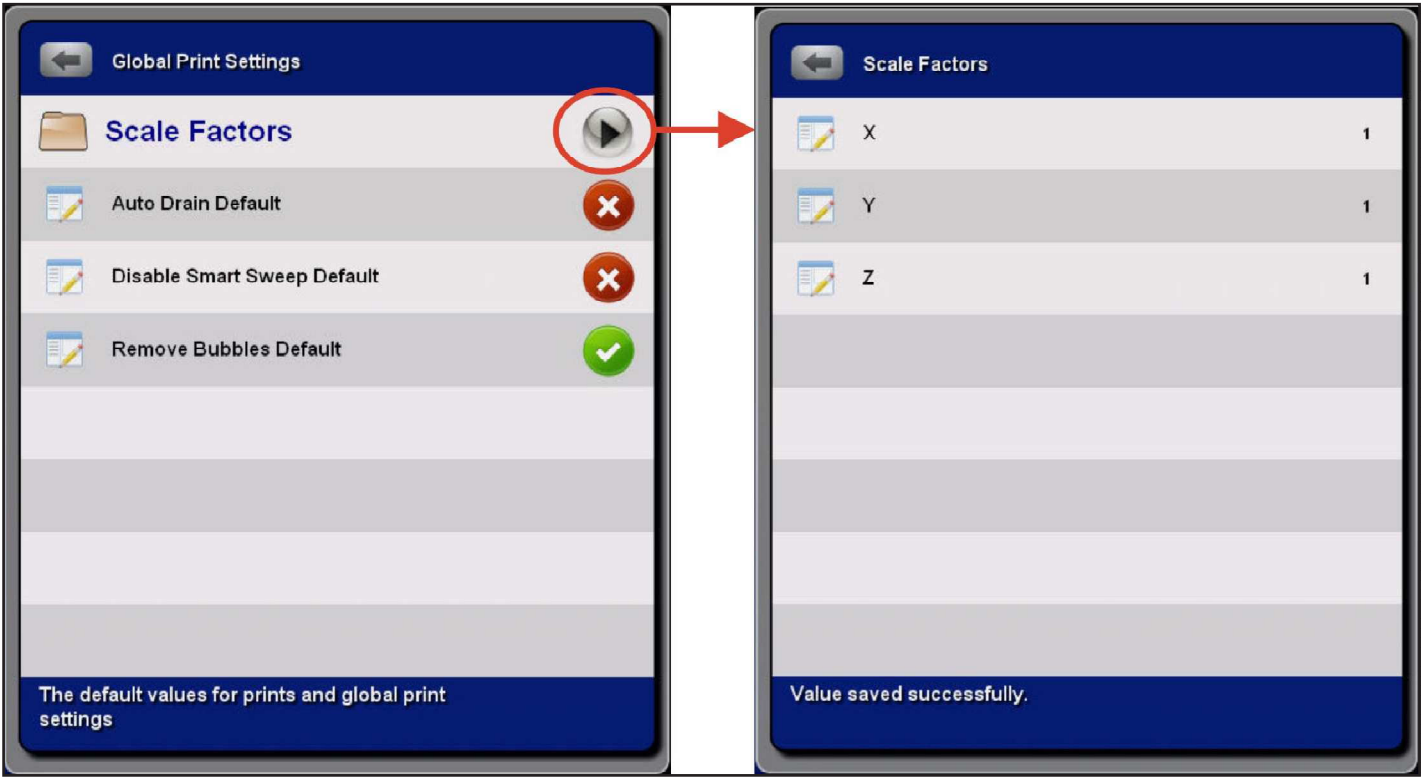
Global Print Defaults

- 1. Touch Global Print Defaults to display the Global Print Settings for the ProJet™ 6000.



Controller/ Indicator	Function
Auto Drain Default	The Auto Drain function automatically moves the print platform to the offload position at build completion. This control sets the default for the Auto Drain function to On or Off.

Controller/ Indicator	Function
Remove Bubbles Default	The Remove Bubbles function utilizes the print applicator to remove bubbles from the print material at the beginning of a build. This control sets the default for the Remove Bubbles function to On or Off.



Scale Factors



NOTE: Scale Factors are specific adjustments made for each individual machine.

2. Touch **Print Scale Factors** to display the scale factors for the X, Y and Z axis.

