


## Prints

After print jobs have been submitted to the printer, the user may use the front panel to select, start and view information about a particular print job.



1. Press the **Prints** key.
2. The system will display the **Prints** screen. The screen below shows a sample screen with multiple print jobs submitted to the printer. The color and icon associated with each print job indicate the following:
  - Red with caution icon - Print job was aborted.
  - Green with check mark - Print job printed successfully.
  - Blue with blue build box - Print job is ready and next to be built.



3. To view additional information about each print job, press the Edit key at the bottom of the screen. A right arrow key  appears beside each print job. Press this key to view details about a print job.



4. For example, pressing the right arrow key beside the aborted (red) print job will display the following information.



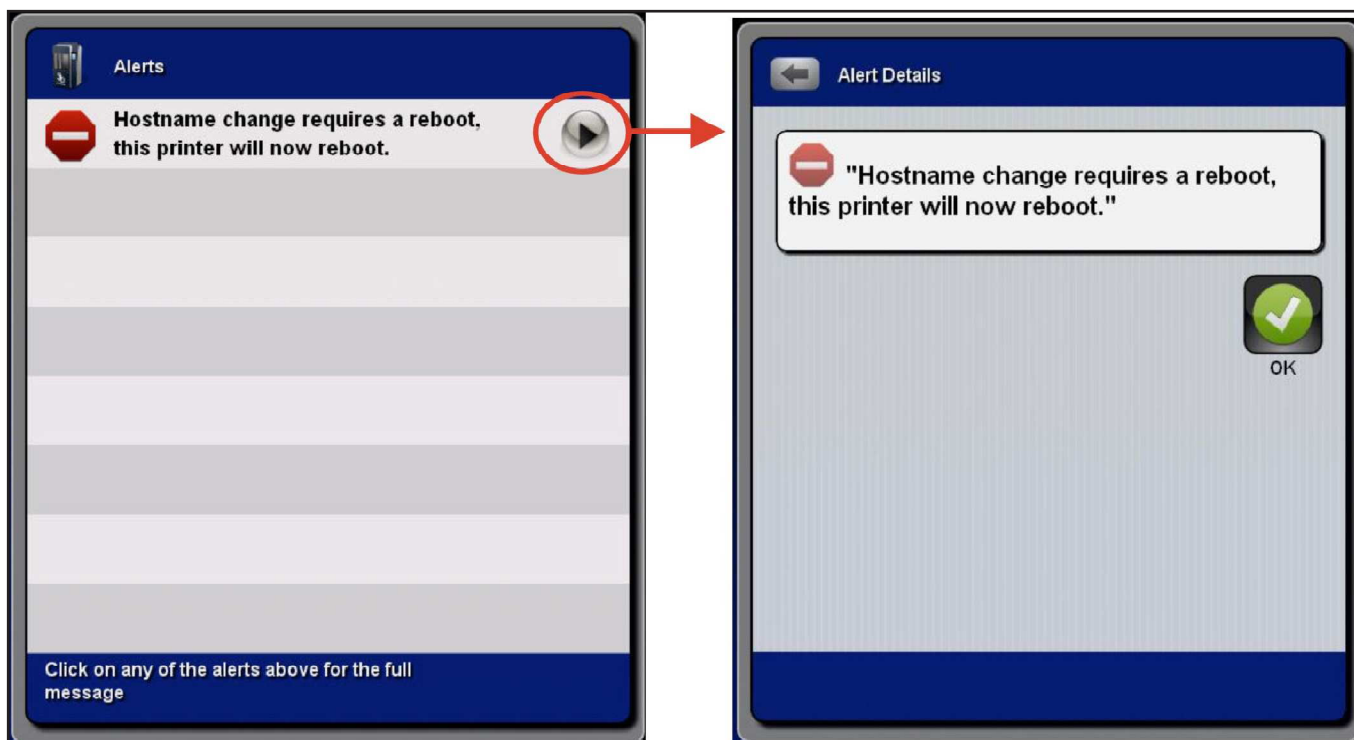
## ALERTS

Pressing the **Alerts** icon and the front panel will display any error conditions that require the user to take action.

In the sample shown below, the hostname was changed and the system provides the user an alert that indicates that this is a condition that requires the system to reboot.



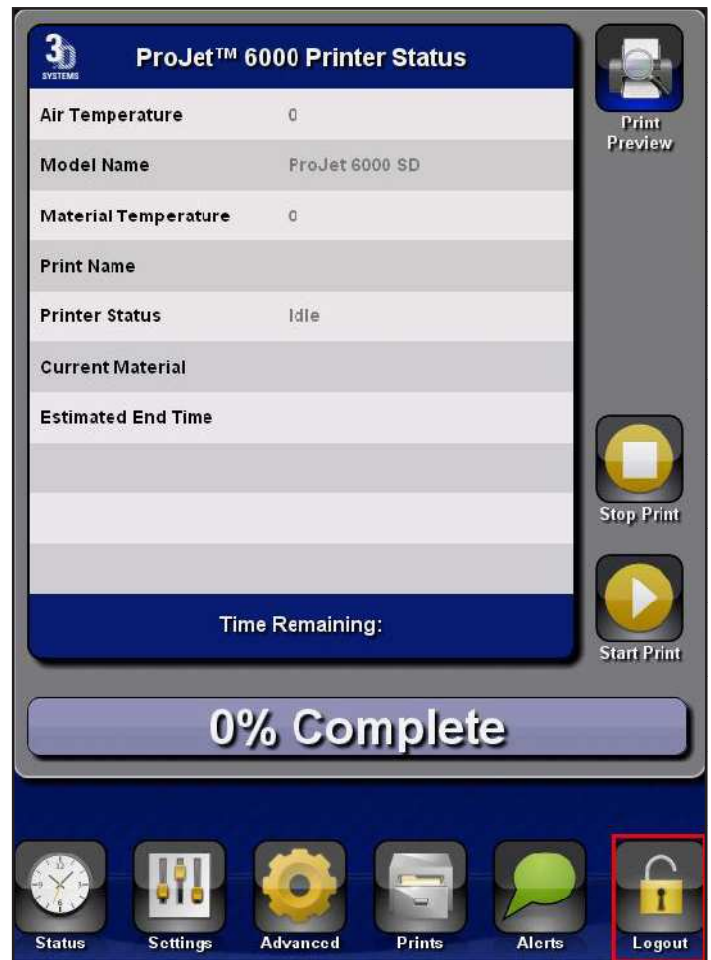
1. To see additional information or recommended actions to take, press the arrow next to the alert message.



2. Although there is no additional information for this particular condition, the action the user needs to take is indicated by the presentation of the key.  
Pressing the key will acknowledge the message and subsequently reboot the machine.

## LOGOUT

1. To logout from the ProJet™ 6000, press the **Logout** icon as shown.



2. The following pop-up will appear:



- Press **Yes**. The ProJet™ 6000 will then display the opening screen.



## NEW FEATURES FOR FIRMWARE V1.6.2846

### Restart Build Wizard

The **Restart Build** feature has been added to provide the user with more control over the process of restarting a build that has been interrupted. This option can only be accessed after a build has failed. Build failure is defined as any build that was started but did not end properly either through human intervention or hardware/power failure.



**NOTE: Builds must complete at least 1 layer before the restart feature will be available.**

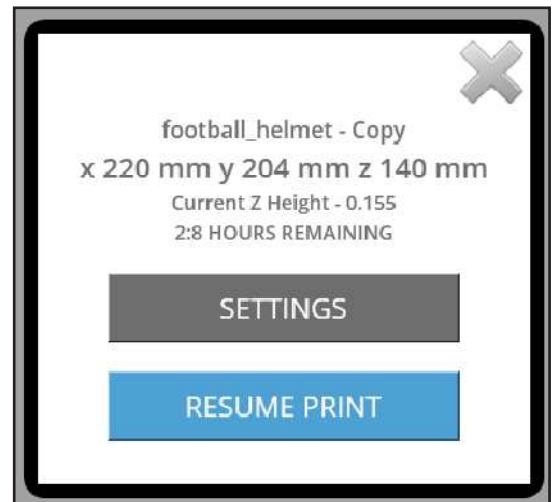
Once a build has been interrupted and the printer is idle, the restart feature may be accessed through the status screen, at right.

- Tap the **Restart Print** icon.
- The screen on the next page will appear.





3. This screen shows the name of the build, the dimensions of the build, and time remaining for the build.
4. **Resume Print** - selecting this option will resume the print with no special parameters. The machine will level the material, scan the layer, and sweep.
5. **Settings** - selecting this option, the **Advanced Restart Wizard** options will be displayed, as seen below:



- a. From here, you can home the elevator, adjust the elevator position, perform an applicator sweep, level the material, add more wait time to the current layer, select a specific layer, or rescan the selected layer multiple times.



**NOTE: Sweeping is disabled during support recoat regions.**



**NOTE: If the elevator has not been homed the user may move the elevator downward but not upward.**



**NOTE: If the applicator has not been homed the user cannot move the elevator up beyond the last known layer.**

footballhelmet - Copy

Print Resume Settings

Resume on

LAYER Z-HEIGHT

30

Resume layer scans

1

Resume wait time (Secs)

0

Elevator / Leveler

Move Distance

0.0

MOVE ELEVATOR

HOME ELEVATOR

MOVE TO PRINT LAYER

LEVEL

Sweep

Velocity

0

Blade Gap

0

SWEEP

Restart layer is in support region. Sweeping disabled.

CANCEL

RESUME PRINT

## Recoat Parameter Modifications on-the-fly Wizard

This wizard assists with making mid-build recoating adjustments.

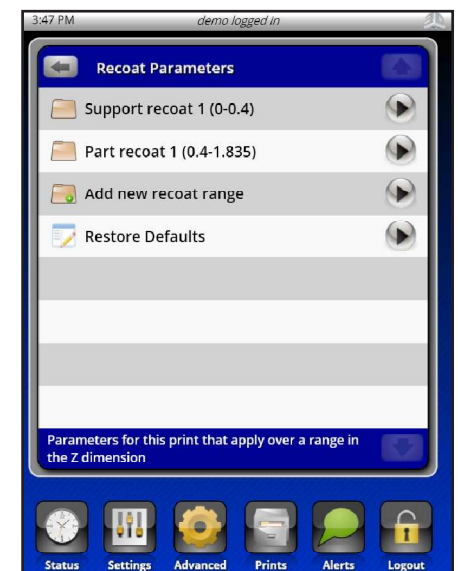
1. To access the Recoat Parameter Modification options, go the **Prints** screen and select the build settings tapping the arrow icon next to the build filename.



2. From the print settings, select the Recoat Parameters option:



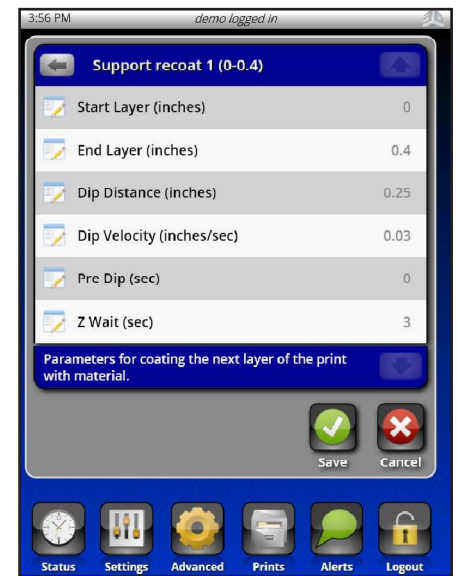
3. From here the user may open existing recoat styles and make adjustments. The user can also add recoat style ranges and sweeps to existing recoat styles.
  - a. All modifications can be reverted by selecting **Restore Defaults**.





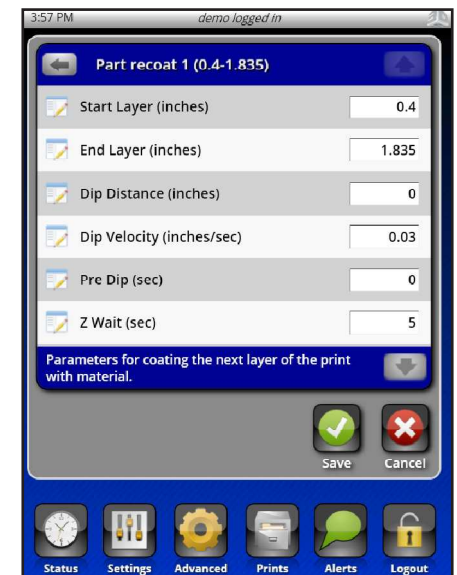
#### 4. Editing Support Recoat Parameters

- a. Options for support ranges are limited due to the nature of support building.



#### 5. Editing Part Recoat Parameters

- a. From here all part recoat parameters can be modified and extra sweeps can be added.



#### 6. Modifying Sweeps

- a. To modify sweeps or add extra sweeps, tap the down arrow to reveal the sweep addition tools:



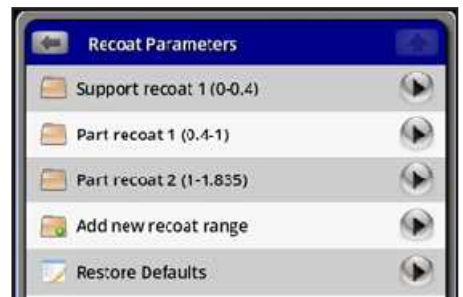
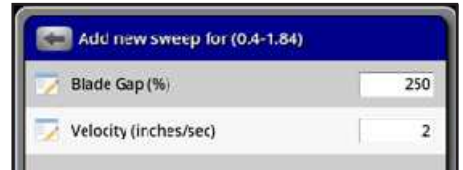
- b. Adding a new sweep will show you the default sweep parameters for the current recoat range you've selected:



- c. Selecting existing sweeps will allow you to change the current parameters for that sweep:



7. Selecting existing sweeps will allow you to change the current parameters for that sweep:
  - a. Adding ranges is very similar to adding ranges in 3D Manage. First the user selects the start and end Z range. Once the Z end layer is selected the default options for that recoat range will populate. The defaults will be determined by the recoat range (Support / Part) and the BFF settings for that Z range.
  - b. Ranges added between existing ranges will spawn additional ranges to fill in the full Z range, as seen at the right.
  - c. In the example at right, if a part style range is added to a print with Z height 0-1.835" with a range of 0.4-1", a new range of 1-1.835" will be added.



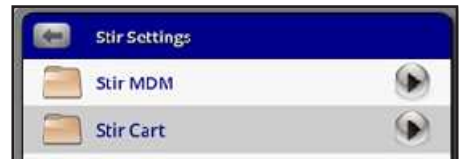
## Stir Wizard

This wizard assists the user in stirring the material in the material cart.

1. To access the Stir Wizard, the user should first navigate to the advanced functions tab. Select **Stir**.



2. Select **Stir Cart**.



3. The following screen will appear. Tap **Start Stir**.



The following are potential issues with GUI v1.6.2846:

- User must use the backspace button to erase scale factor values before entering new values even though the values are highlighted when selected.
- Users running versions of 3D Manage older than v1.5.5438 will be unable to access Projet machines running v1.6 and later software. This includes both remote access and remote build submission.

Reverting the Projet software requires special instructions. Please contact Field Service to request a software downgrade if required.