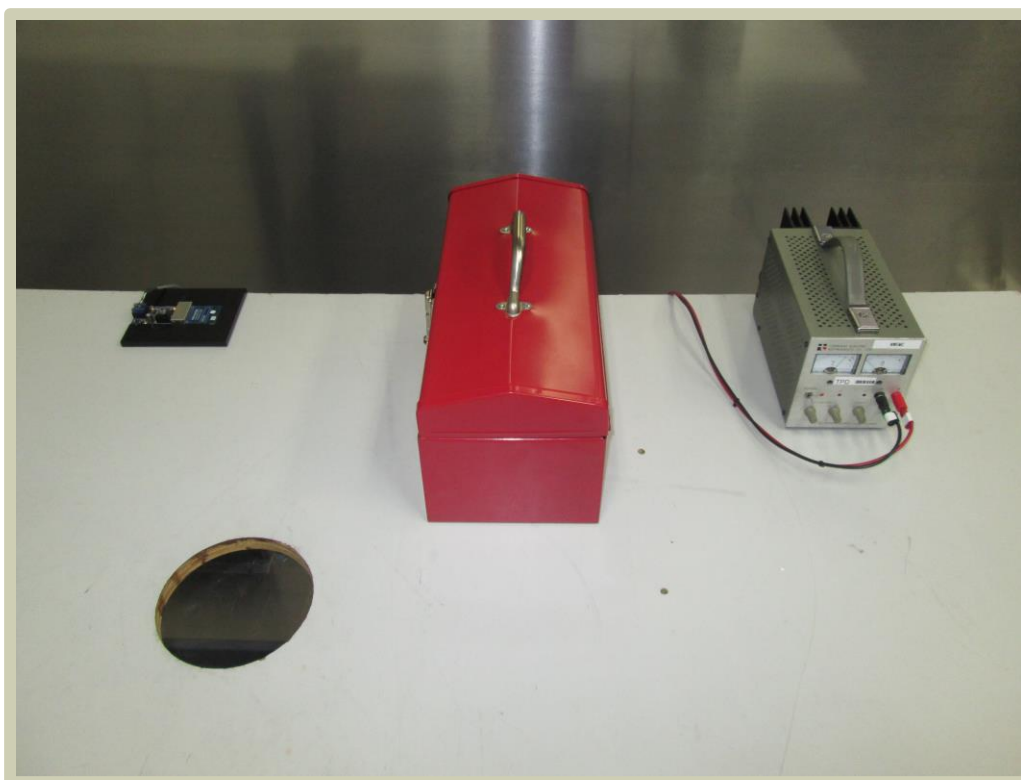
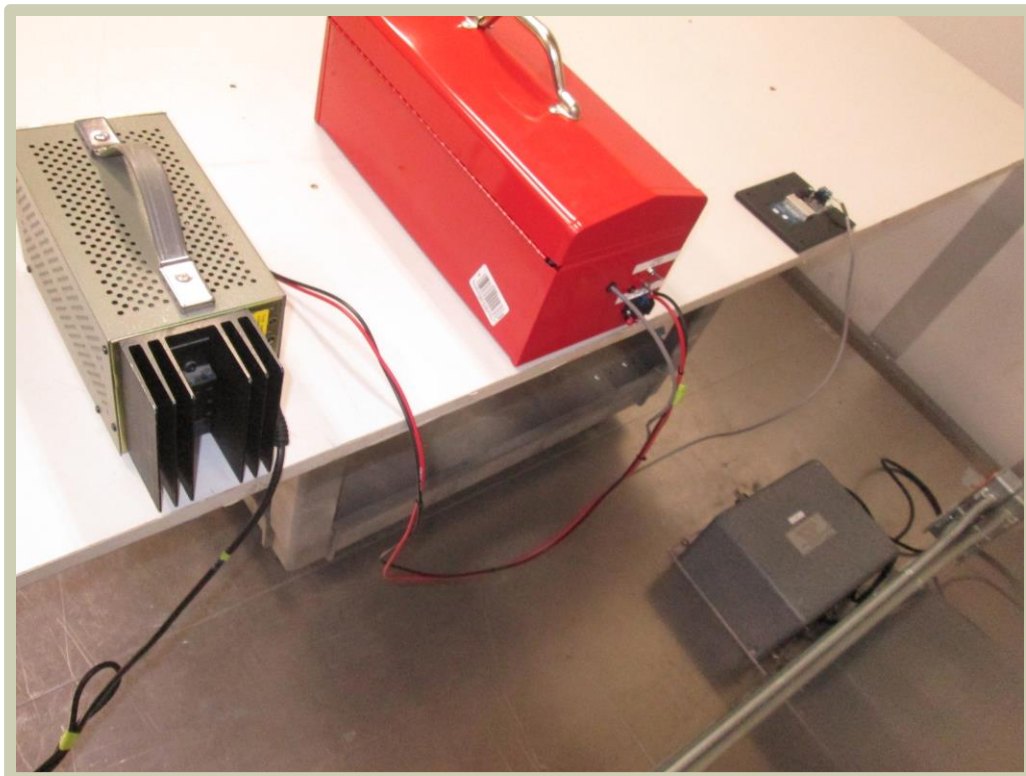
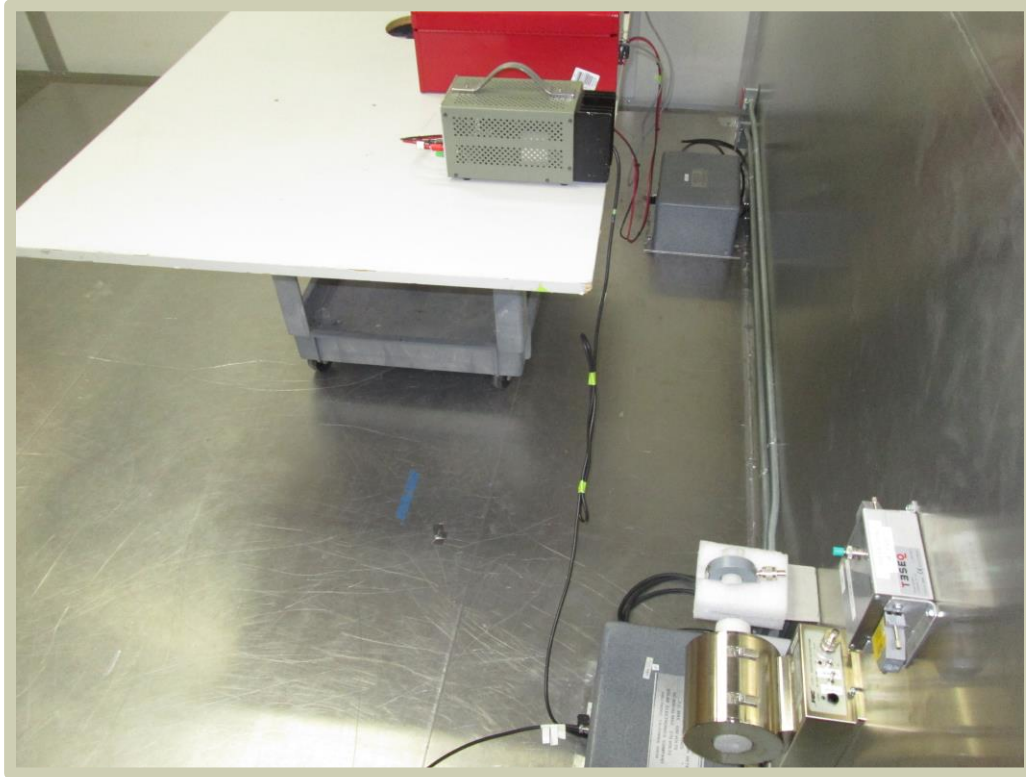


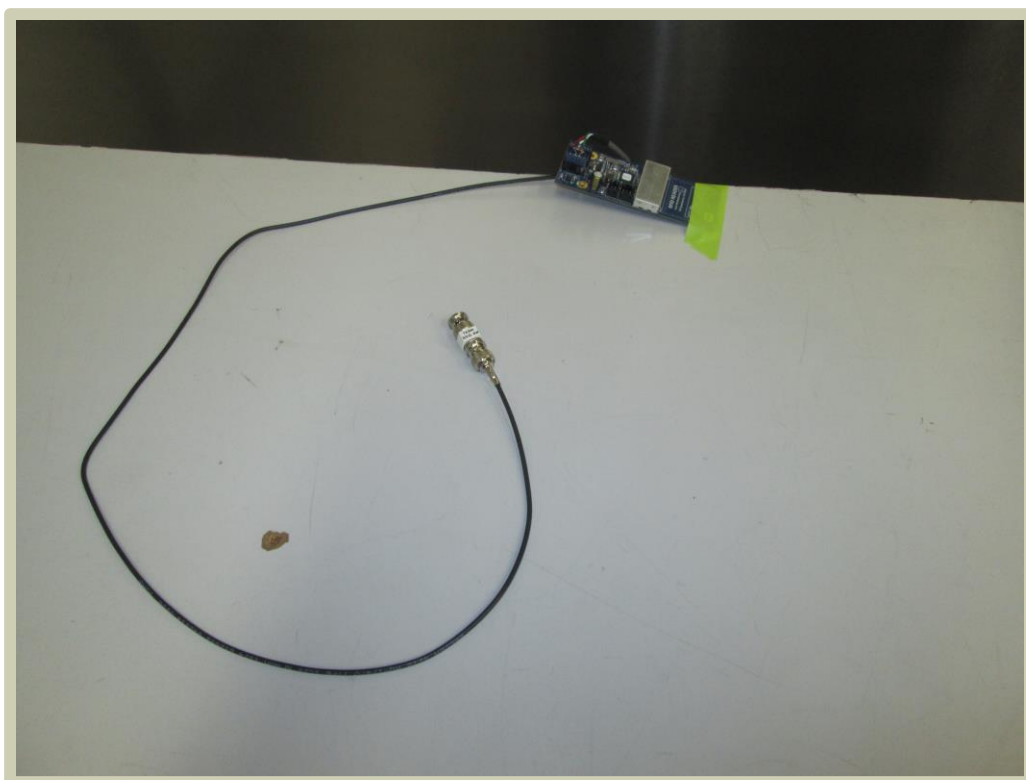
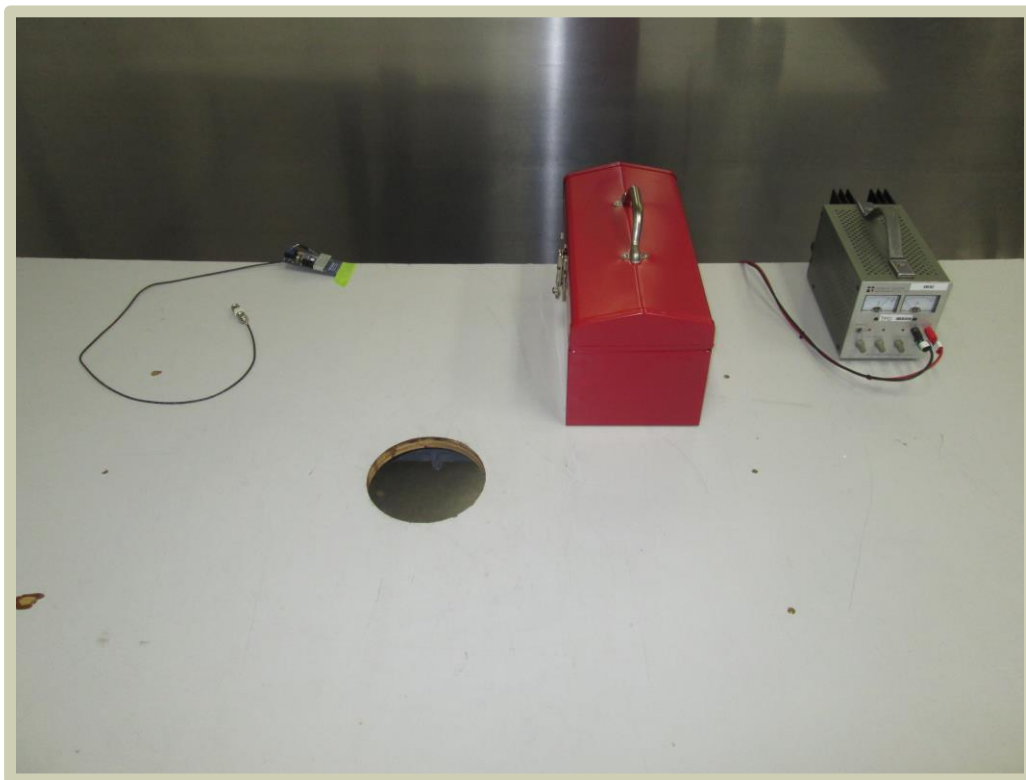
POWERLINE CONDUCTED EMISSIONS



POWERLINE CONDUCTED EMISSIONS



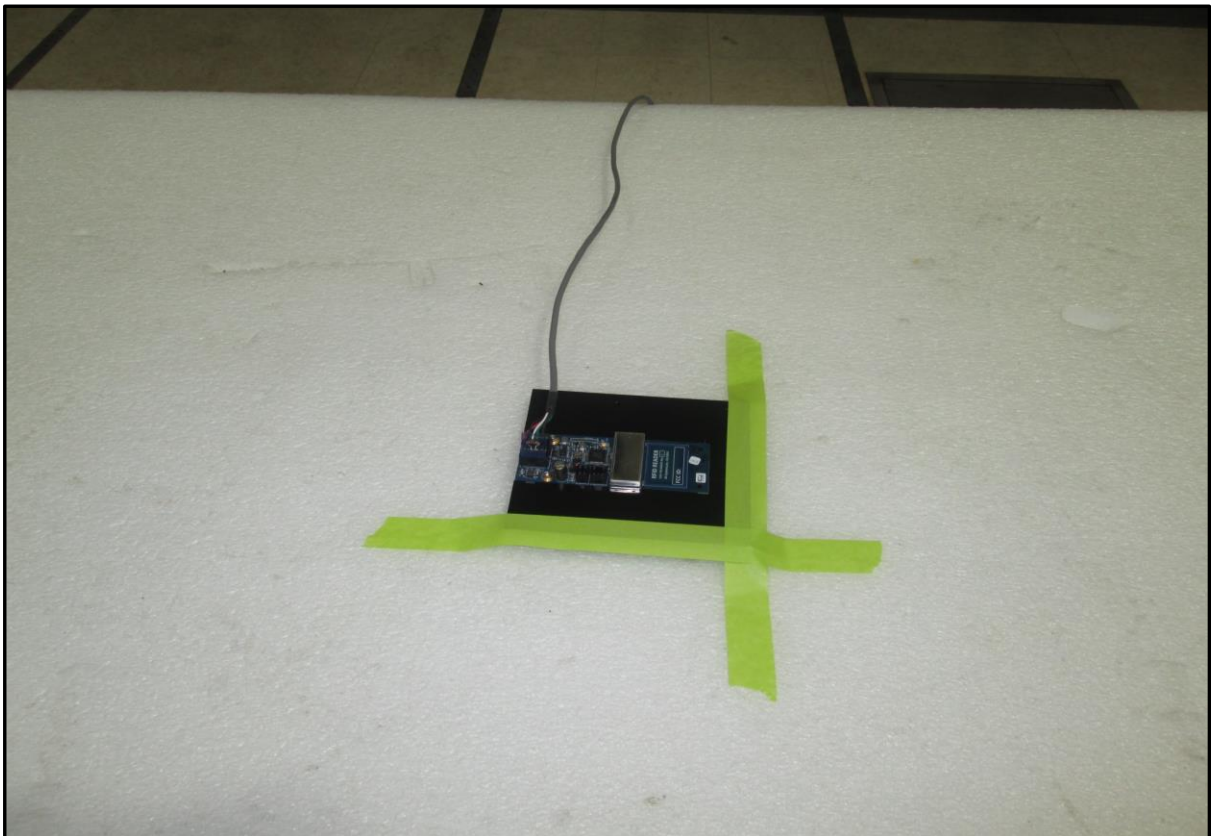
POWERLINE CONDUCTED EMISSIONS



FIELD STRENGTH OF FUNDAMENTAL



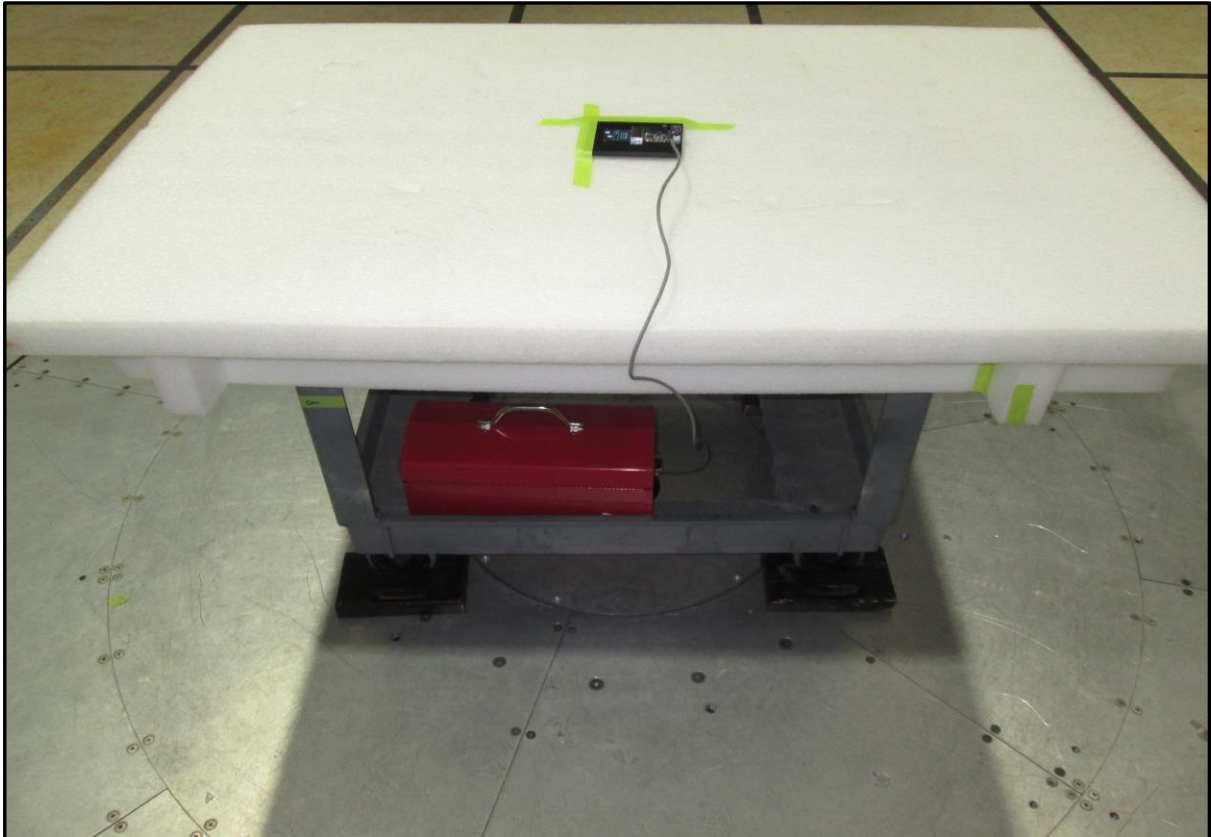
PSA-ESCI 2017.06.01



FIELD STRENGTH OF FUNDAMENTAL



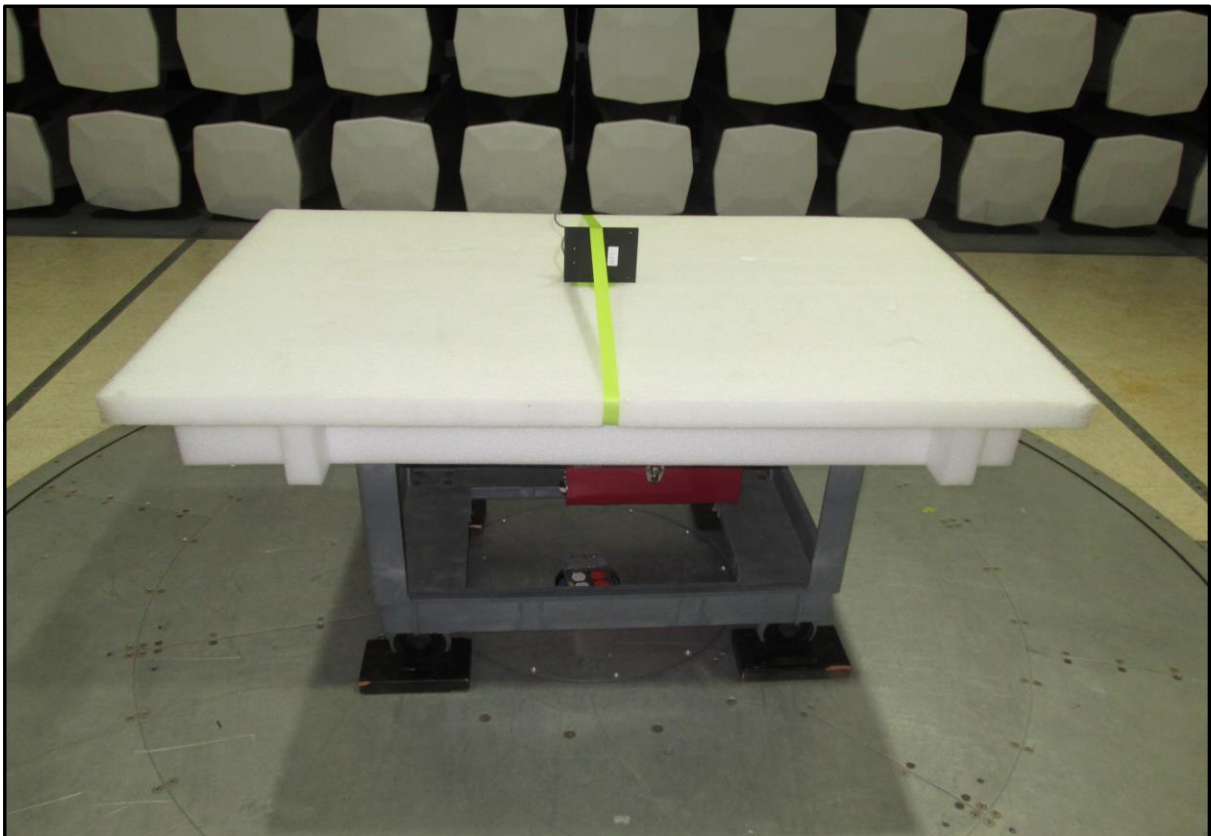
PSA-ESCI 2017.06.01



FIELD STRENGTH OF FUNDAMENTAL



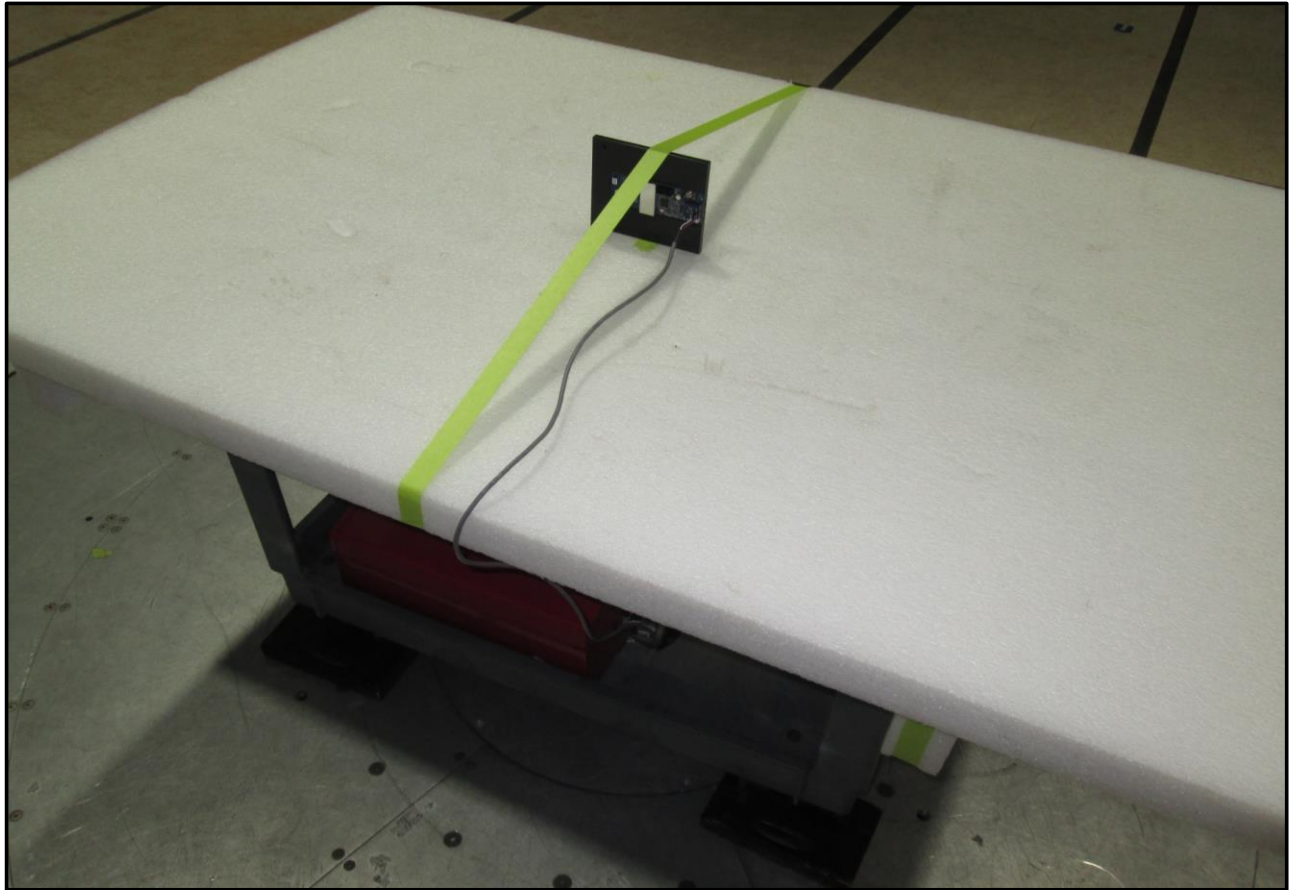
PSA-ESCI 2017.06.01



FIELD STRENGTH OF FUNDAMENTAL



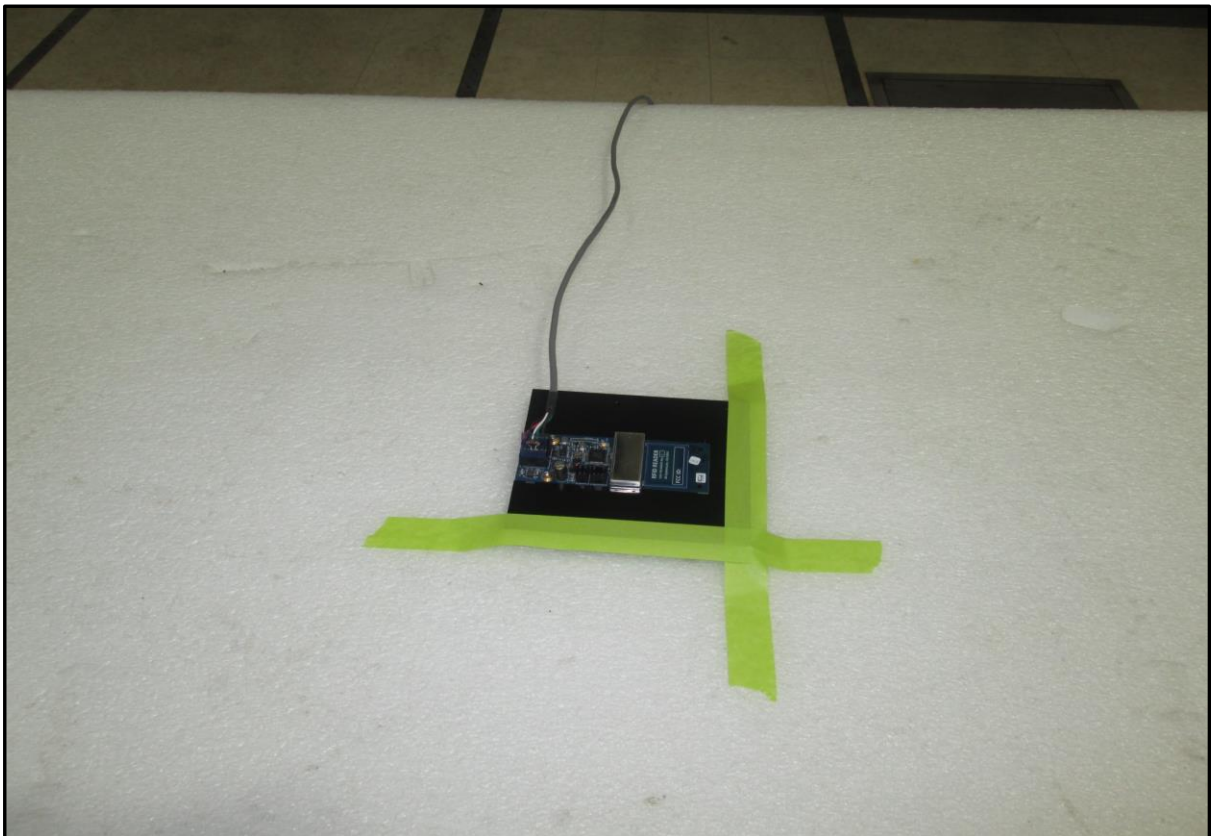
PSA-ESCI 2017.06.01



FIELD STRENGTH OF SPURIOUS EMISSIONS LESS THAN 30 MHz



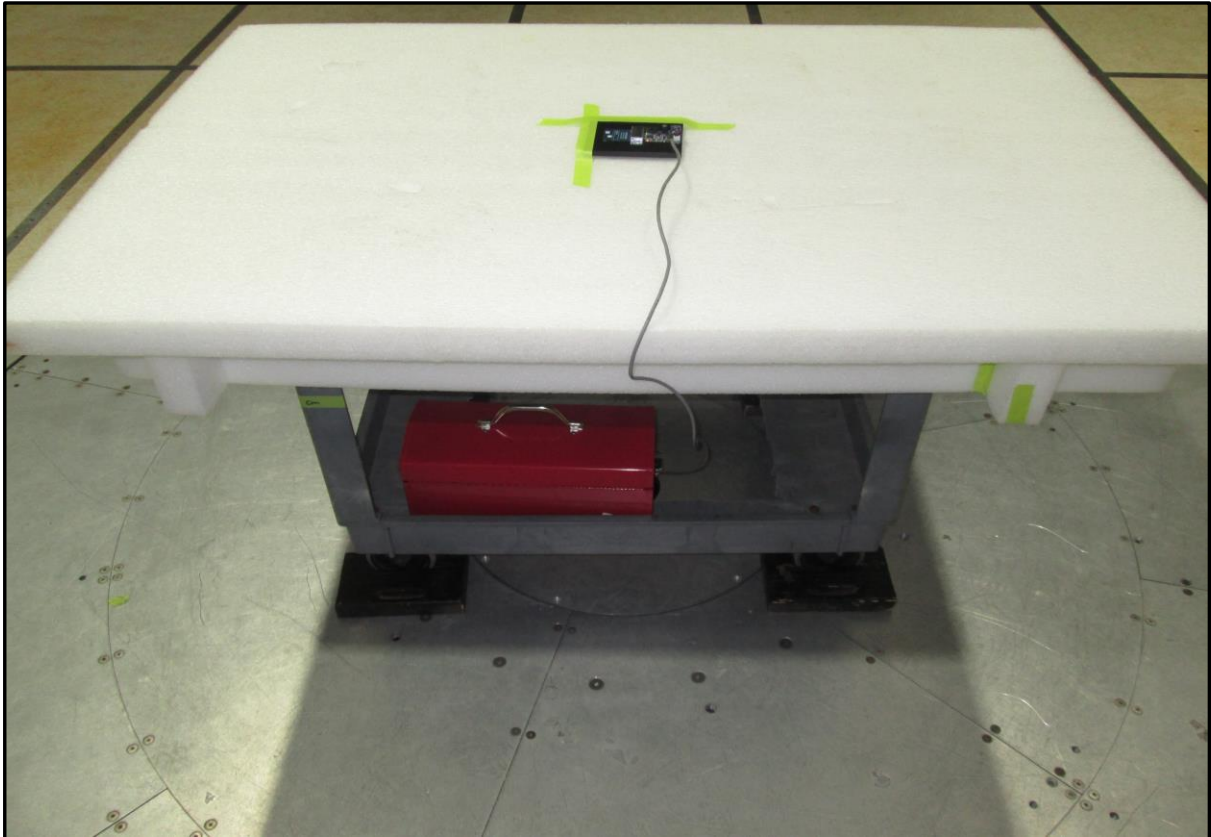
PSA-ESCI 2017.06.01



FIELD STRENGTH OF SPURIOUS EMISSIONS LESS THAN 30 MHz



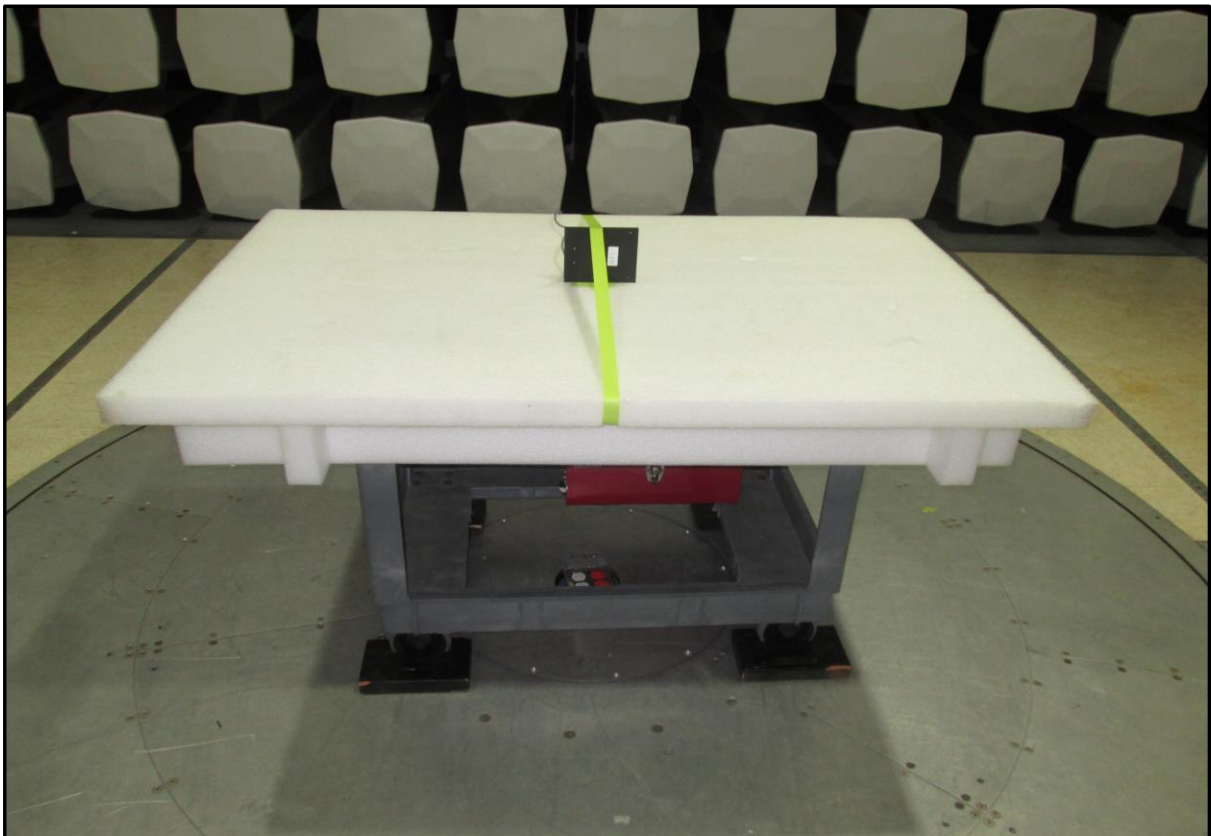
PSA-ESCI 2017.06.01



FIELD STRENGTH OF SPURIOUS EMISSIONS LESS THAN 30 MHz



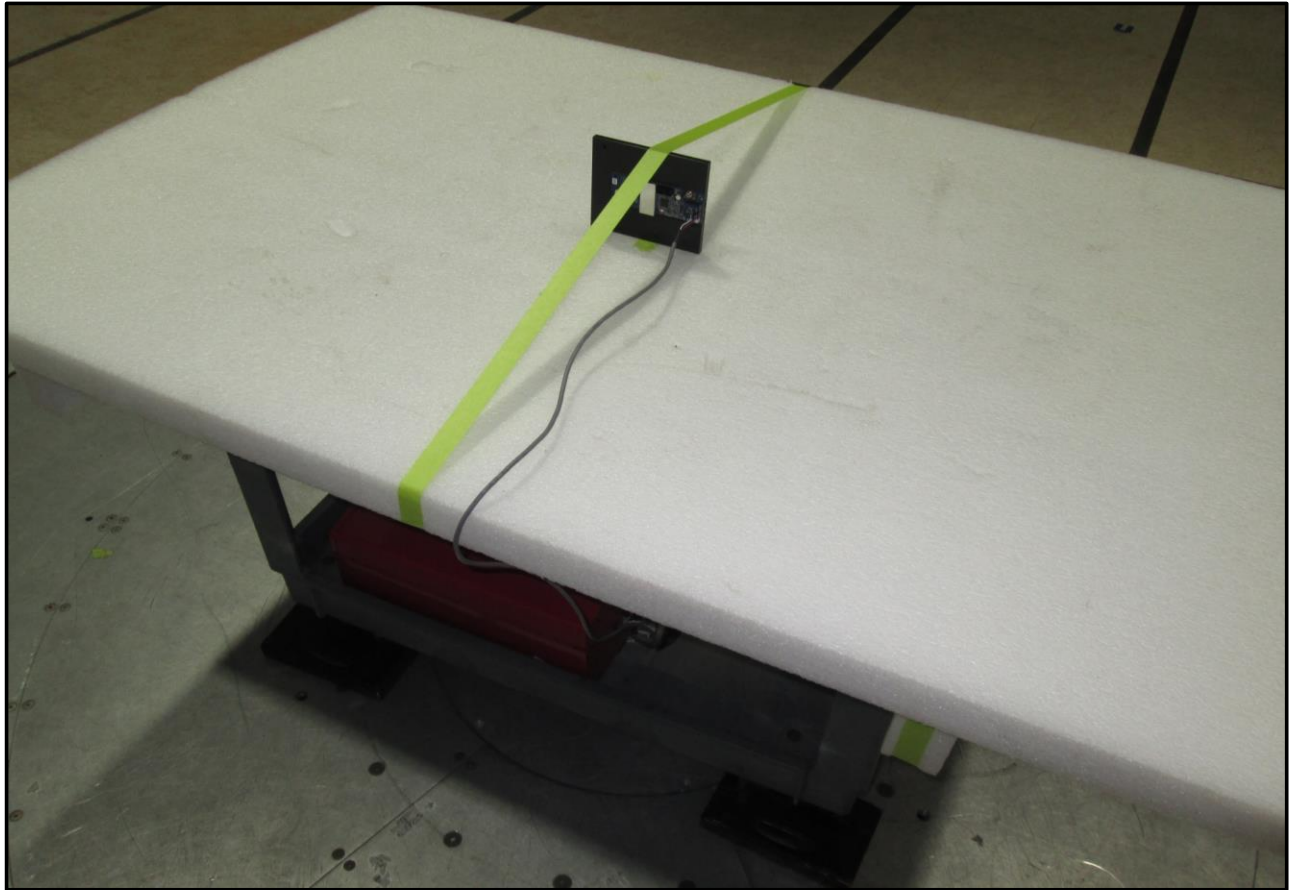
PSA-ESCI 2017.06.01



FIELD STRENGTH OF SPURIOUS EMISSIONS LESS THAN 30 MHz



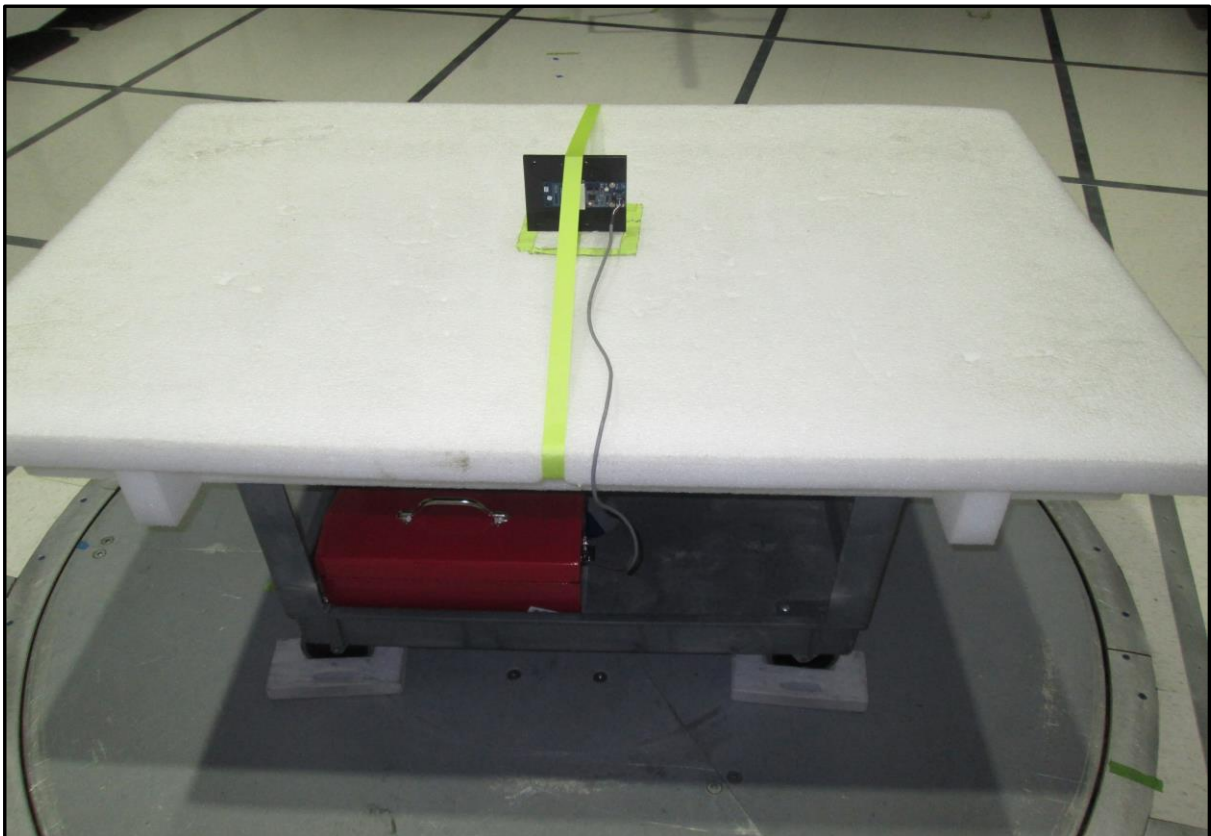
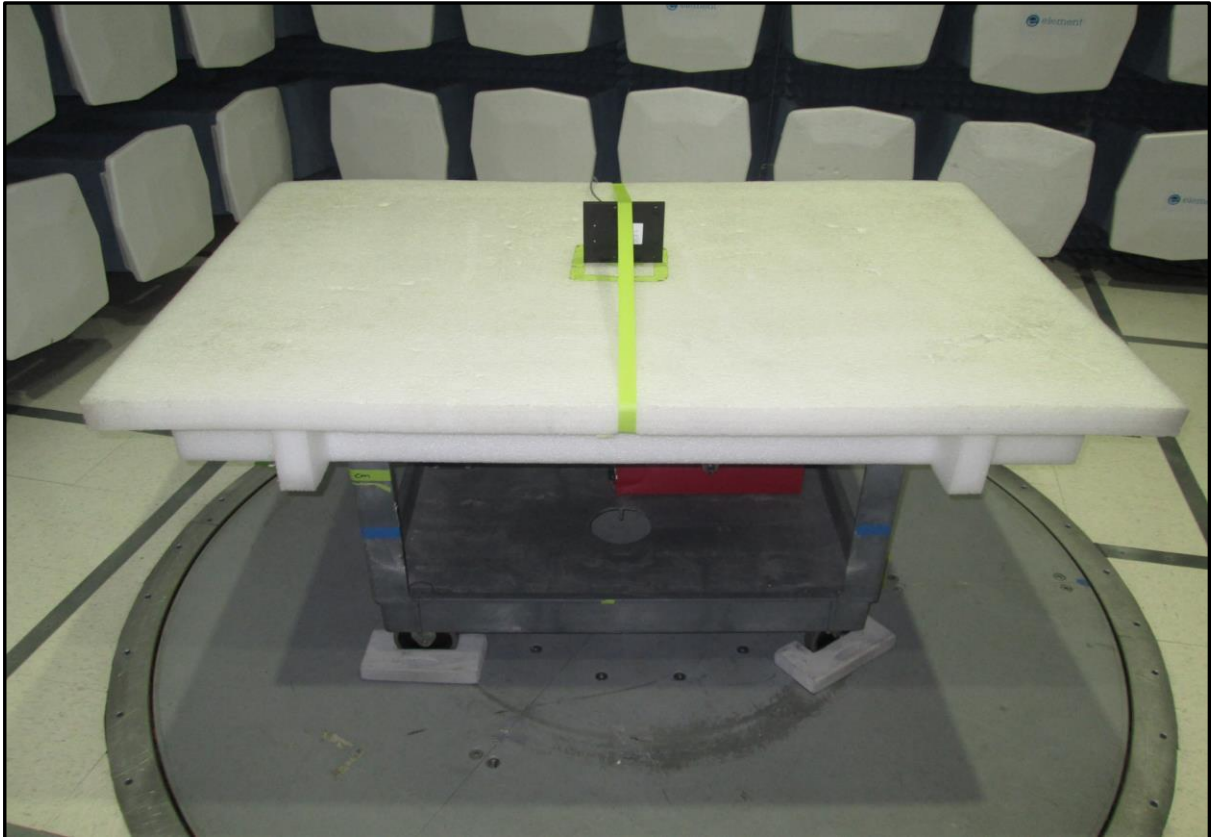
PSA-ESCI 2017.06.01



FIELD STRENGTH OF SPURIOUS EMISSIONS GREATER THAN 30 MHz



PSA-ESCI 2017.06.01



FIELD STRENGTH OF SPURIOUS EMISSIONS GREATER THAN 30 MHz



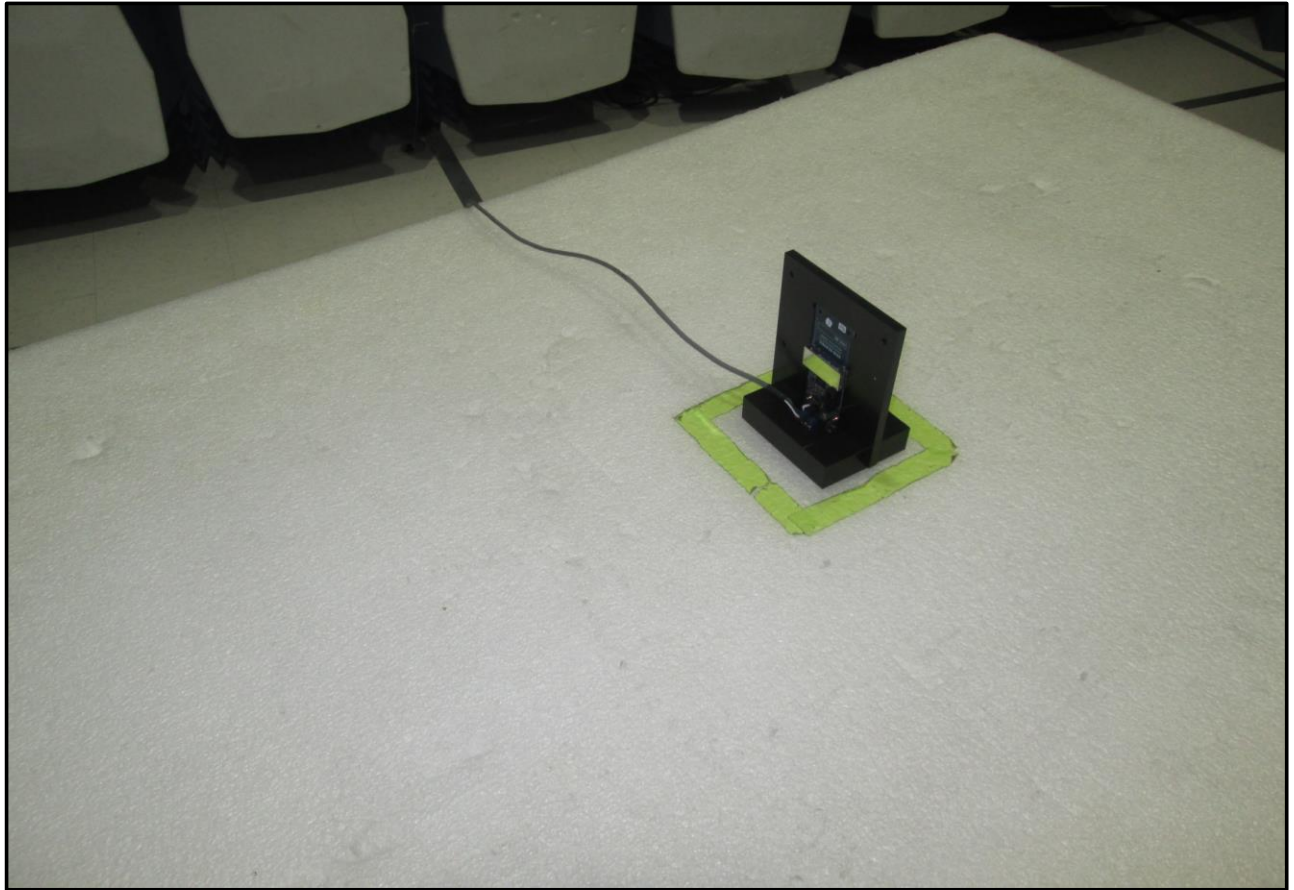
PSA-ESCI 2017.06.01



FIELD STRENGTH OF SPURIOUS EMISSIONS GREATER THAN 30 MHZ



PSA-ESCI 2017.06.01



FREQUENCY STABILITY



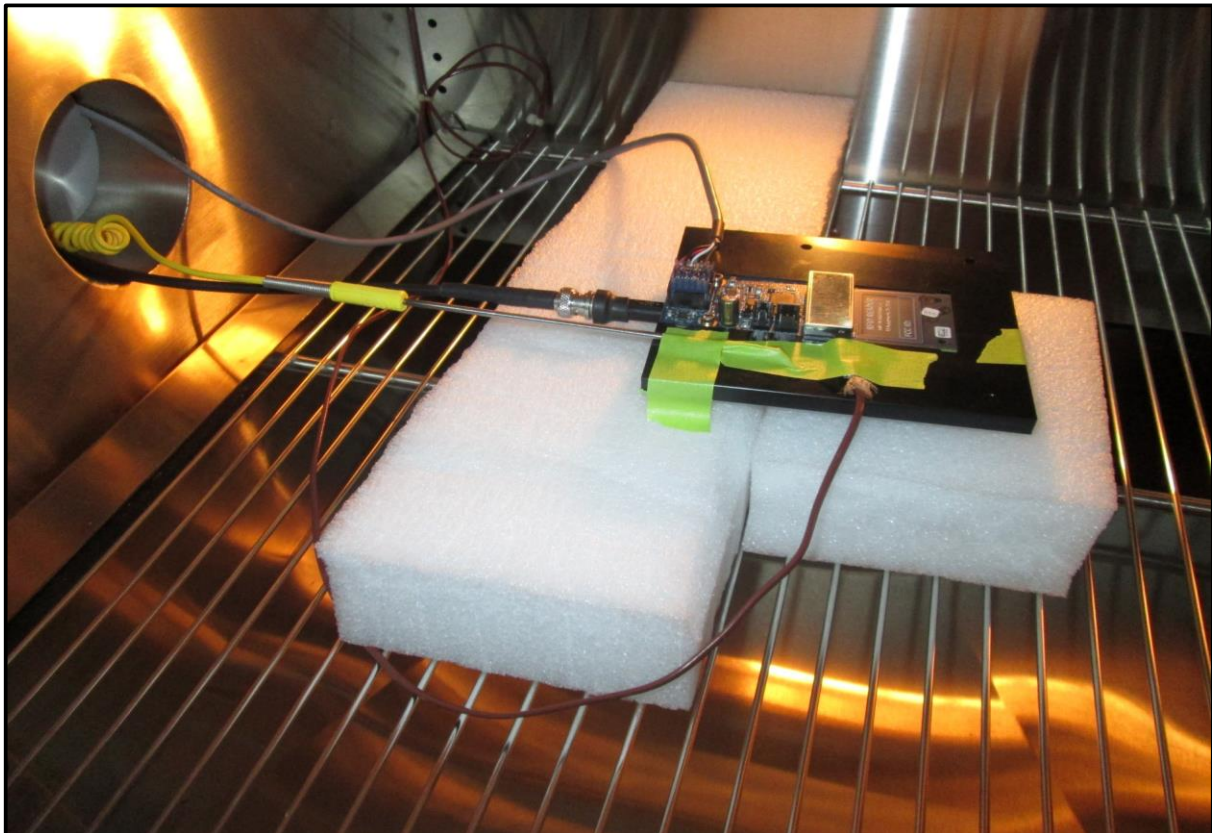
XMit 2017.09.21



FREQUENCY STABILITY



XMit 2017.09.21



FREQUENCY STABILITY



XMit 2017.09.21

