


Client	Brickstream Corp	
Product	3D+ Camera	
Standard(s)	RSS 210 Issue 8:2010 / FCC Part 15 Subpart C 15:2013	

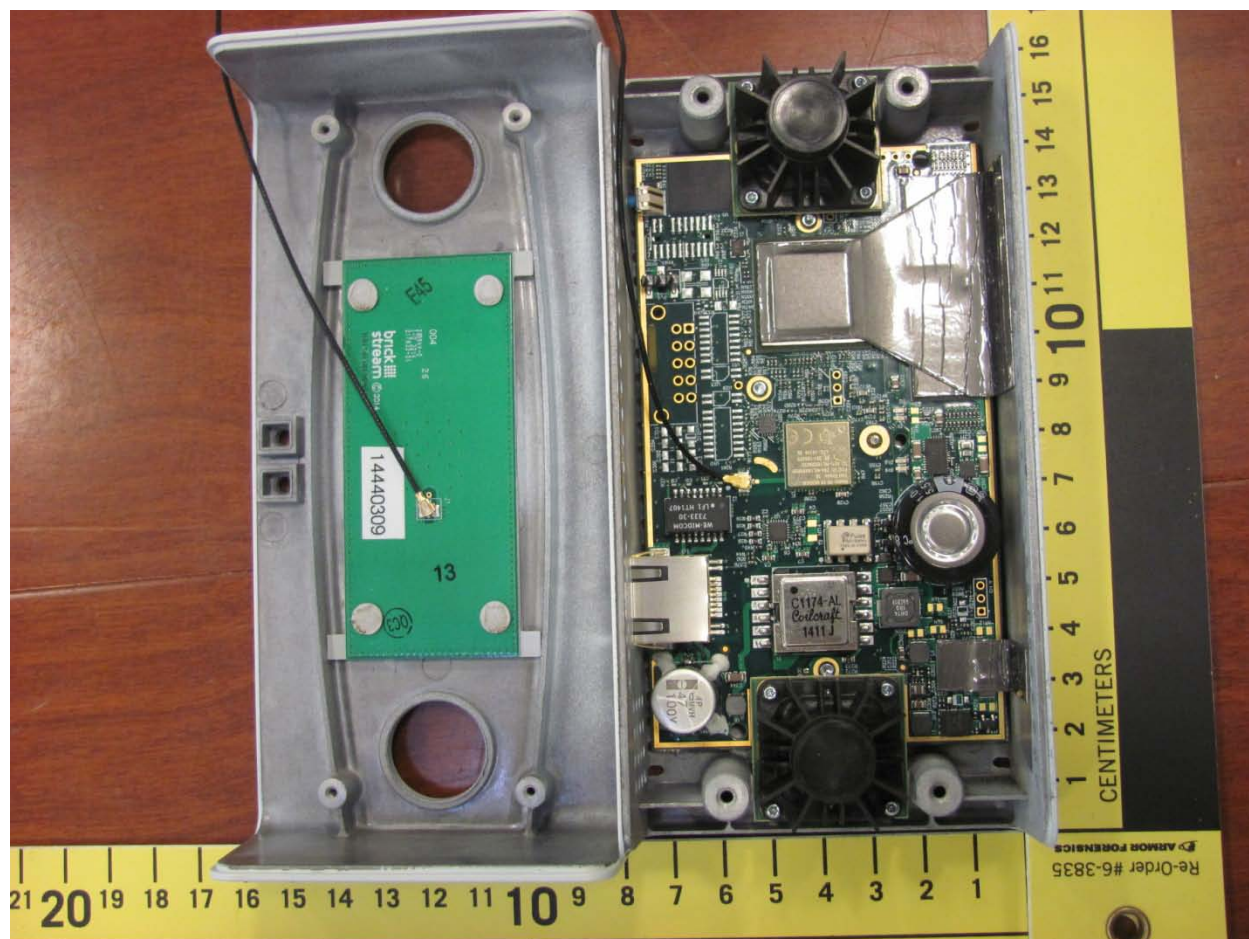



Figure 1: EUT internal photo – front view

Client	Brickstream Corp	
Product	3D+ Camera	
Standard(s)	RSS 210 Issue 8:2010 / FCC Part 15 Subpart C 15:2013	

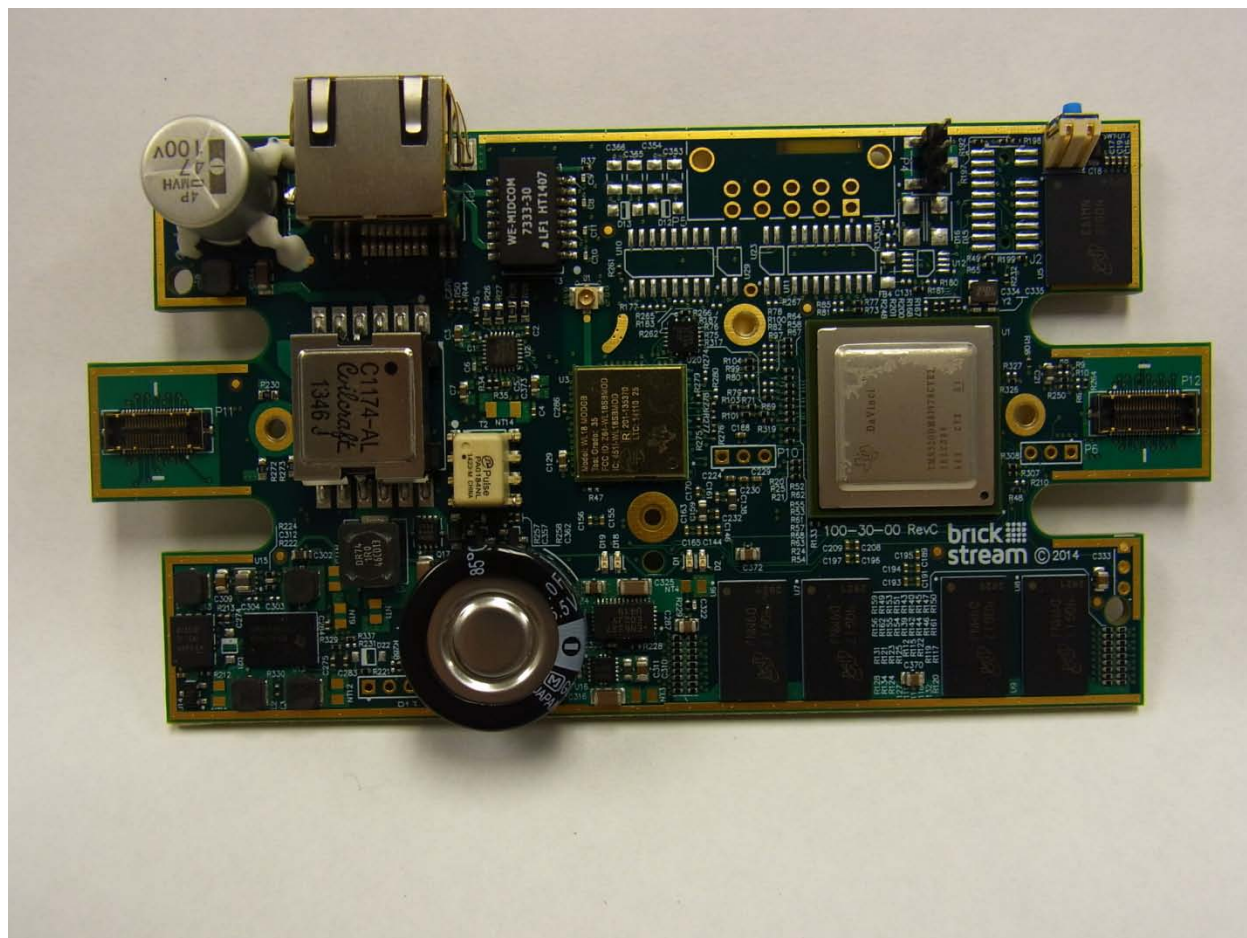



Figure 2: EUT internal photo – Front PCB view

Client	Brickstream Corp	
Product	3D+ Camera	
Standard(s)	RSS 210 Issue 8:2010 / FCC Part 15 Subpart C 15:2013	

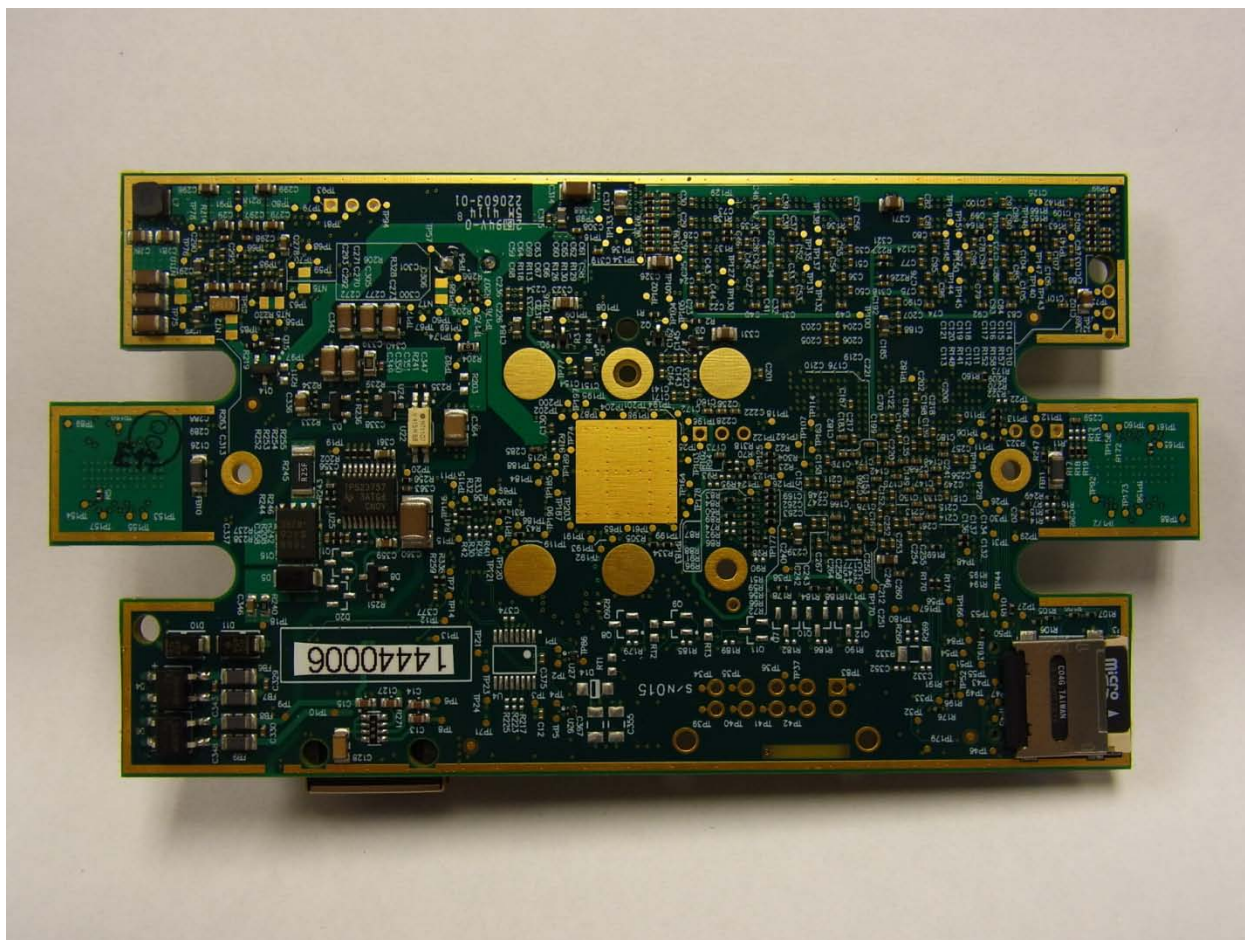



Figure 3: EUT internal photo – rear PCB view

Client	Brickstream Corp	
Product	3D+ Camera	
Standard(s)	RSS 210 Issue 8:2010 / FCC Part 15 Subpart C 15:2013	

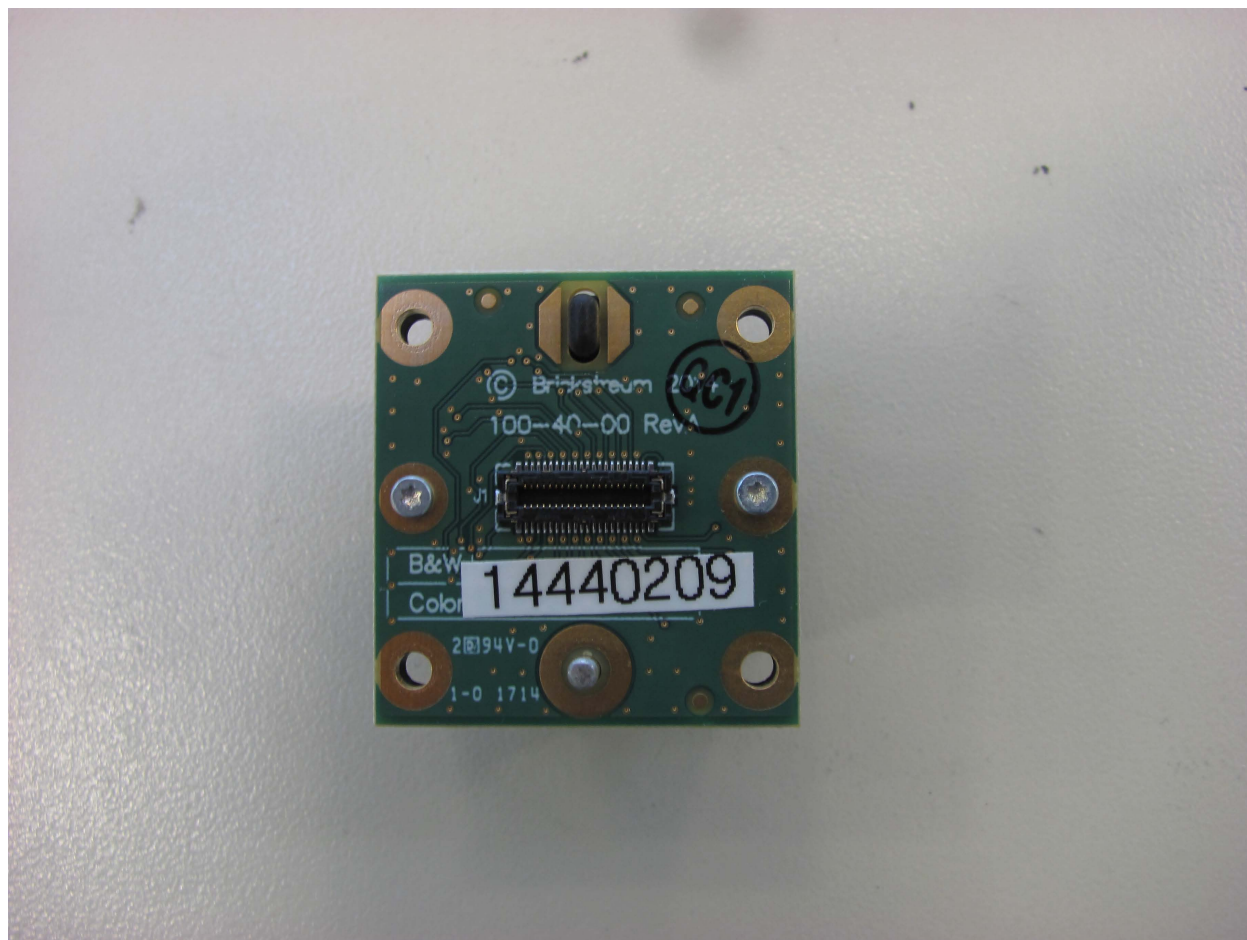



Figure 4: EUT internal photo – camera PCB rear view

Client	Brickstream Corp	
Product	3D+ Camera	
Standard(s)	RSS 210 Issue 8:2010 / FCC Part 15 Subpart C 15:2013	

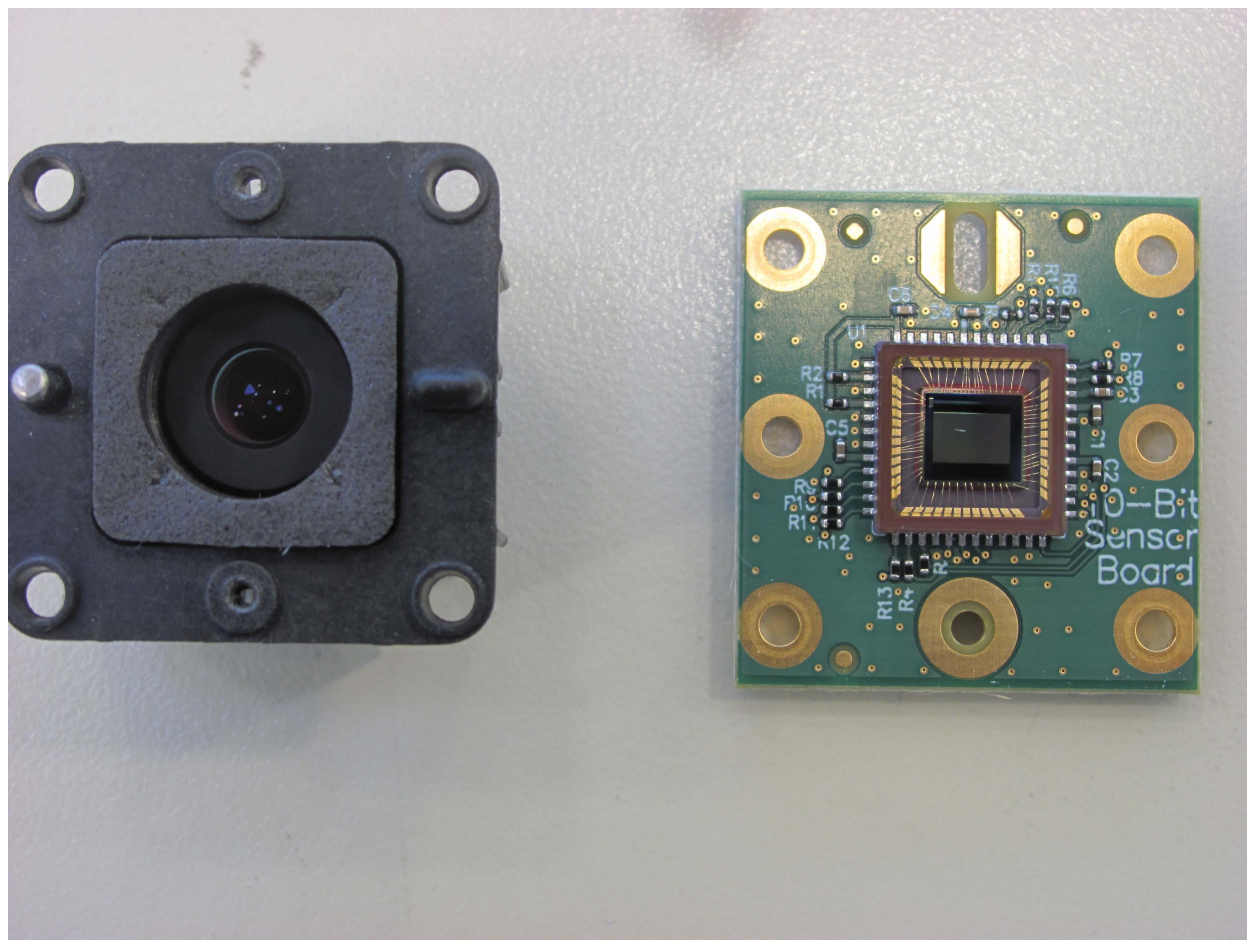



Figure 5: EUT internal view – camera PCB front view with lens

Client	Brickstream Corp	
Product	3D+ Camera	
Standard(s)	RSS 210 Issue 8:2010 / FCC Part 15 Subpart C 15:2013	

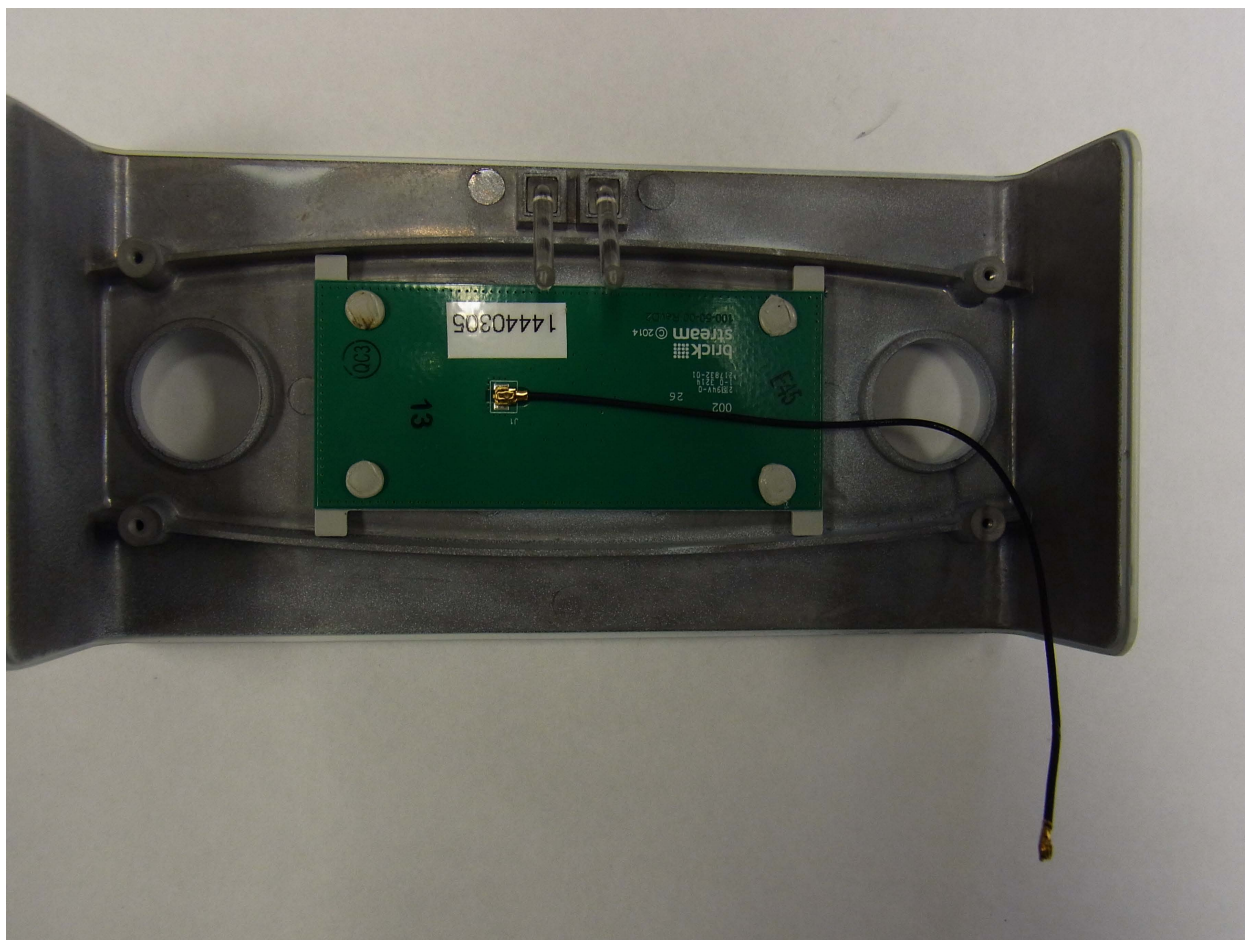


Figure 6: Antenna board affixed to top enclosure housing

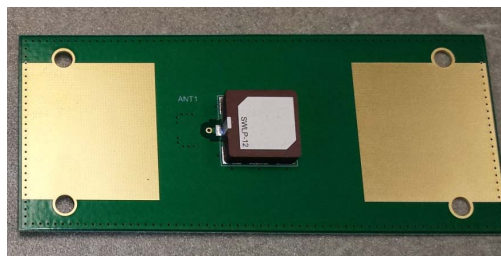


Figure 7: Antenna board with Taoglas Ceramic Patch antenna