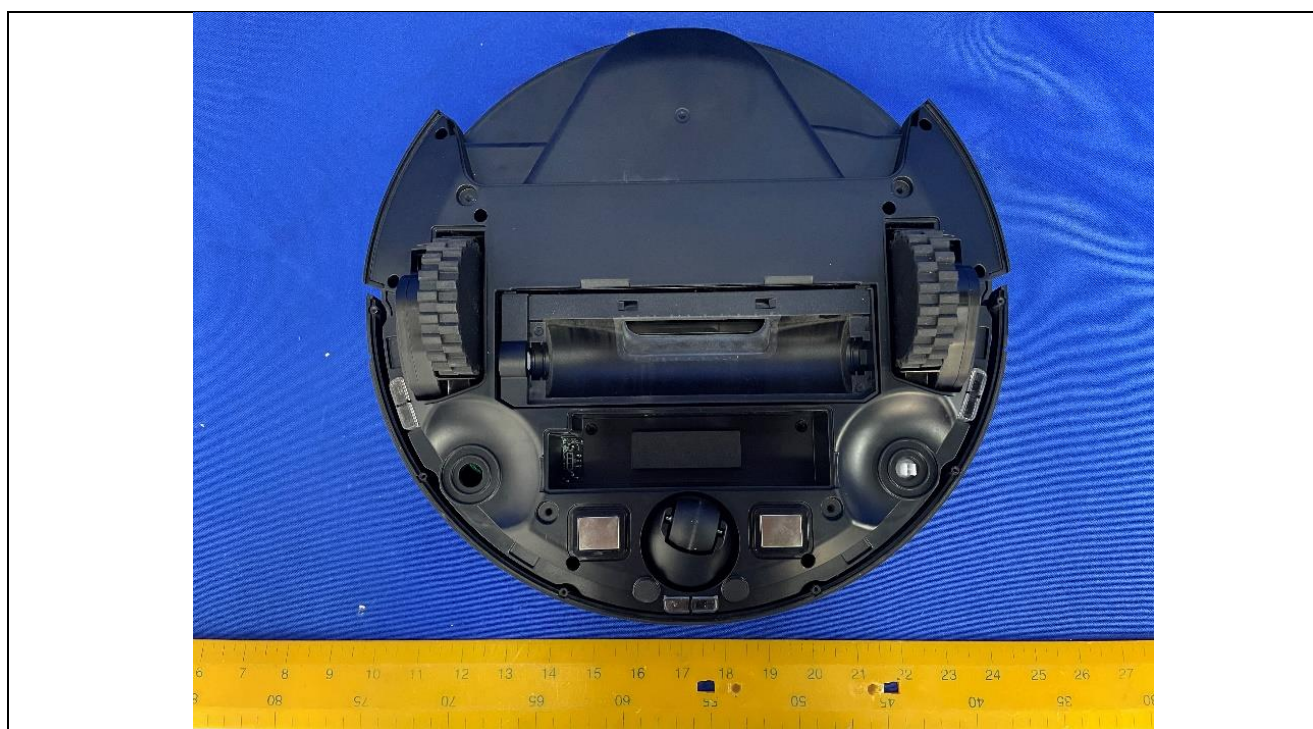


Details of: Internal view



Details of: Internal view

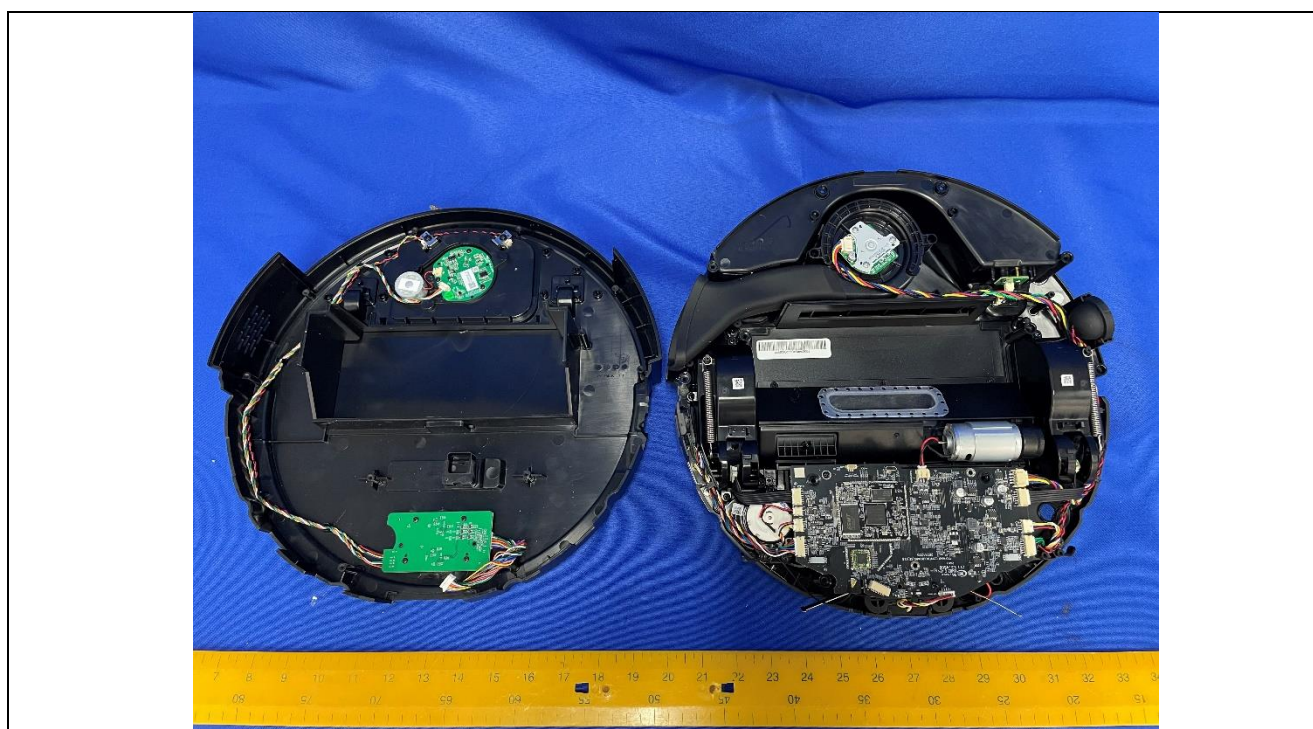


Internal Photos for Model No. T10 SE

Details of: Internal view

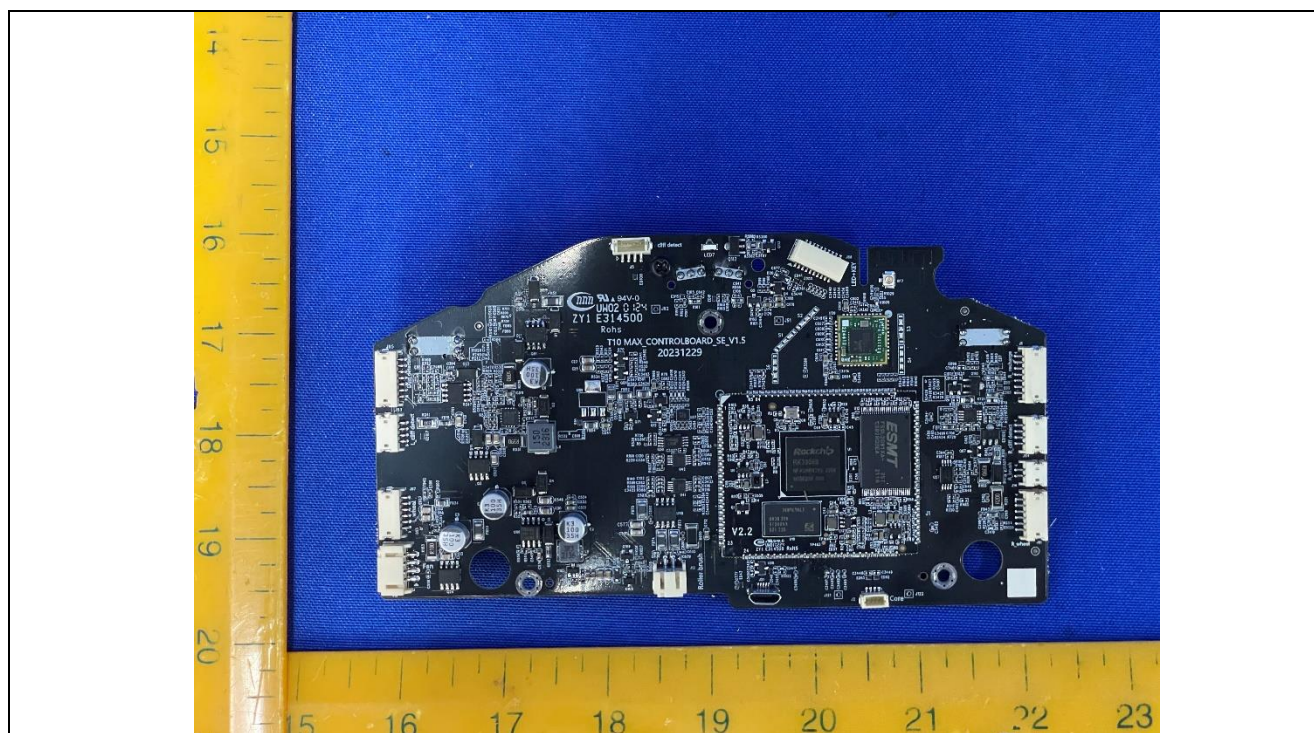


Details of: Internal view

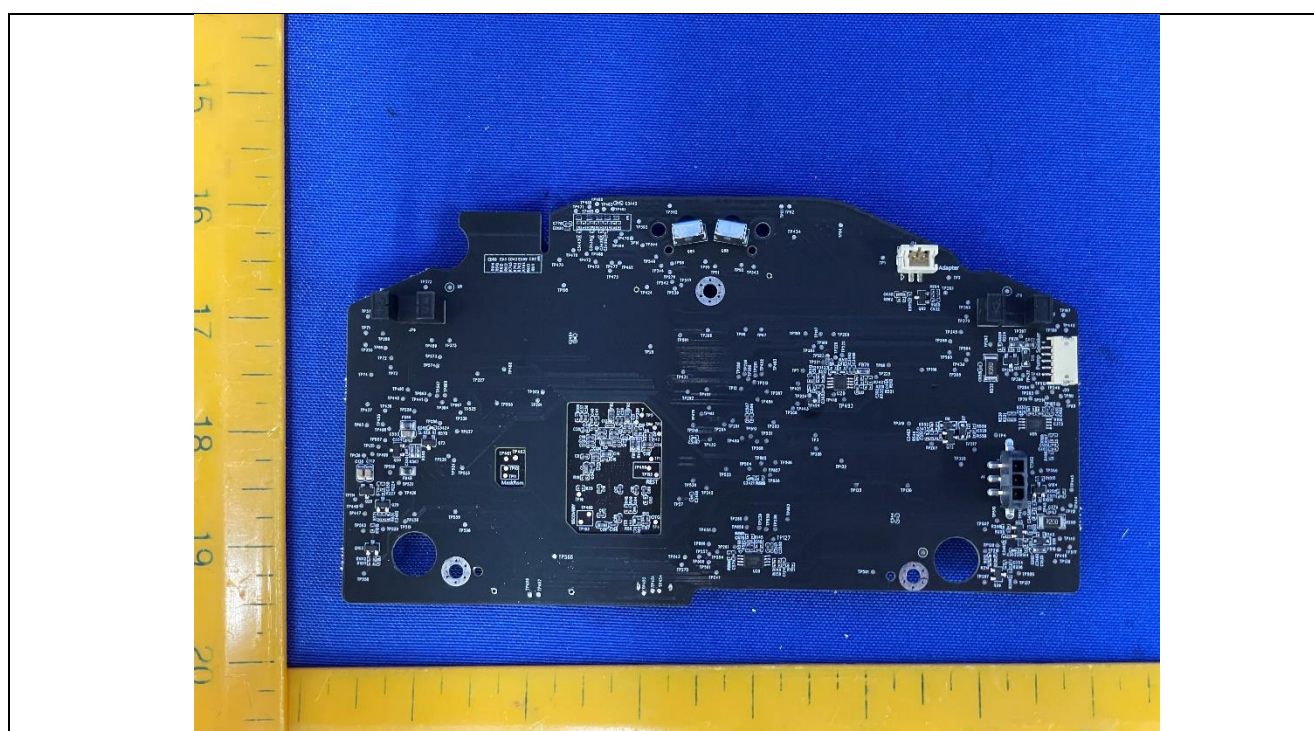


Internal Photos for Model No. T10 SE

Details of: Main PCB view



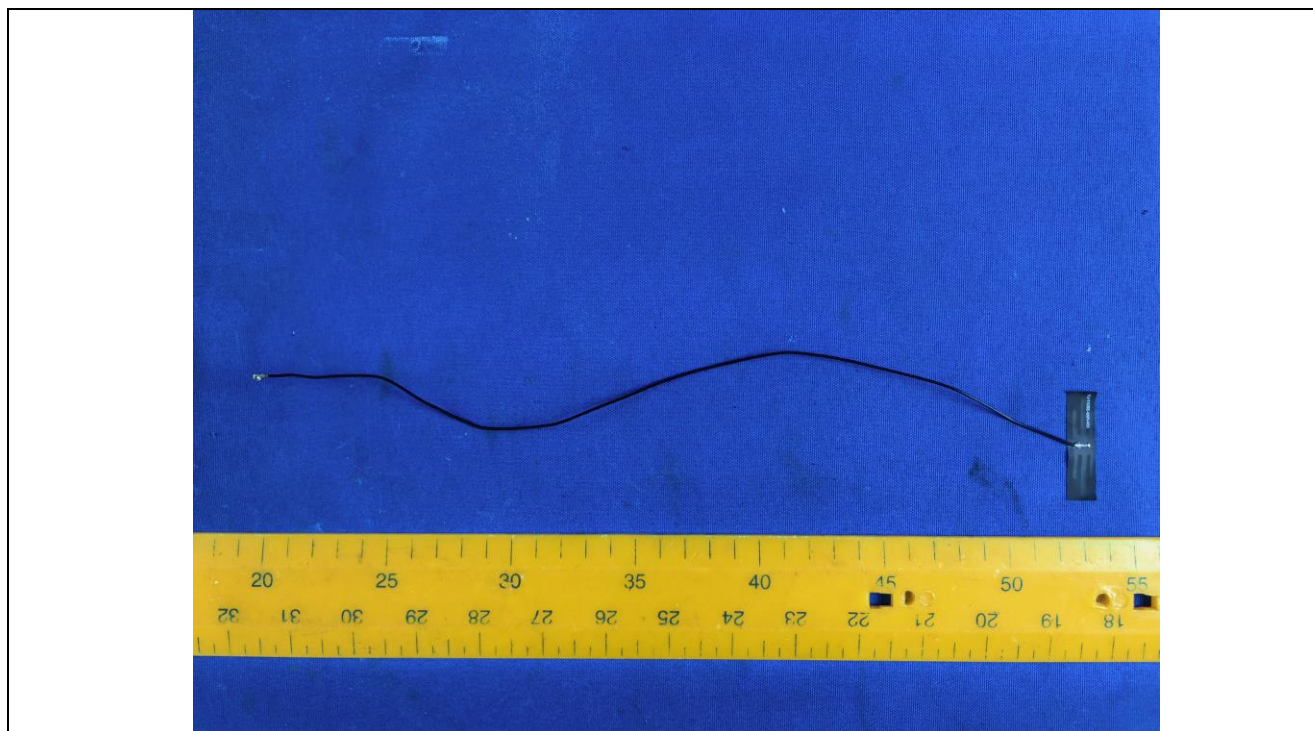
Details of: Main PCB view



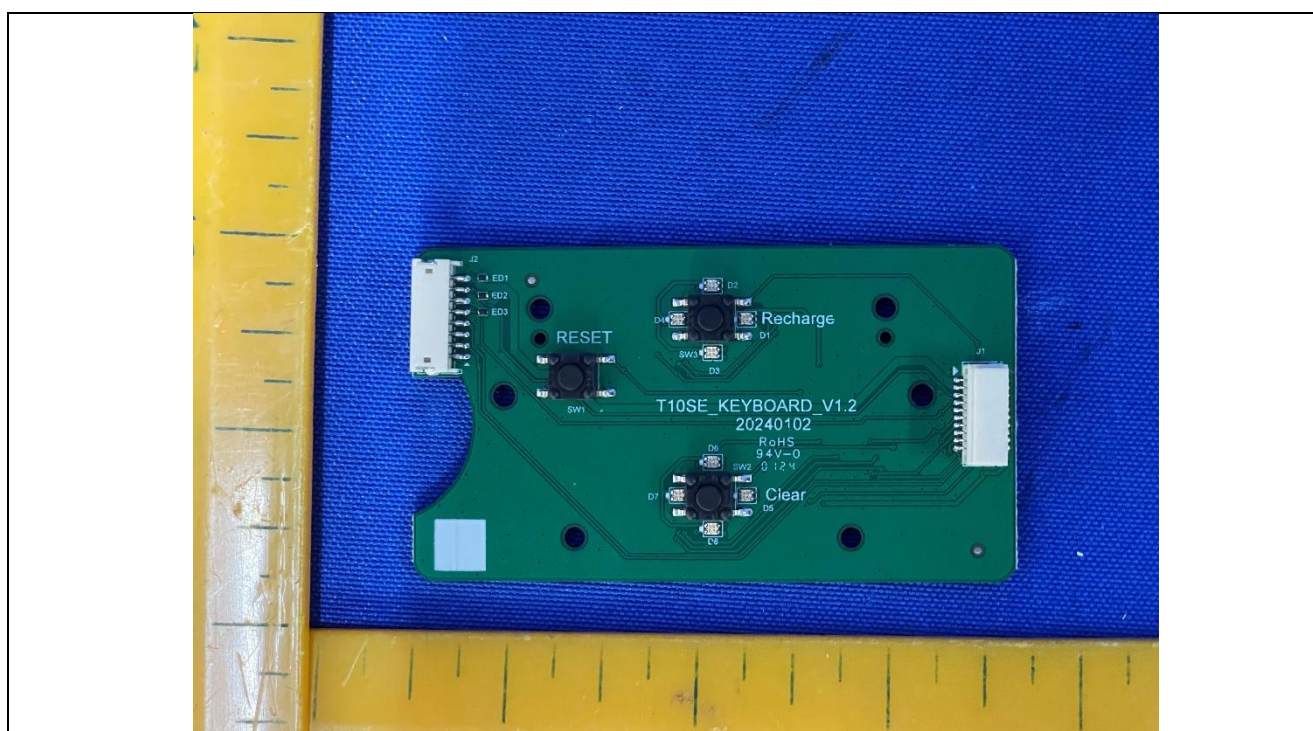
A close-up photograph of the underside of a black plastic component, possibly a laptop base. A red rectangular box highlights a label with the text 'YJ-T10SE-WIFI-V01' and a small metal pin or screw. The background is a solid blue surface.

Internal Photos for Model No. T10 SE

Details of: Antenna

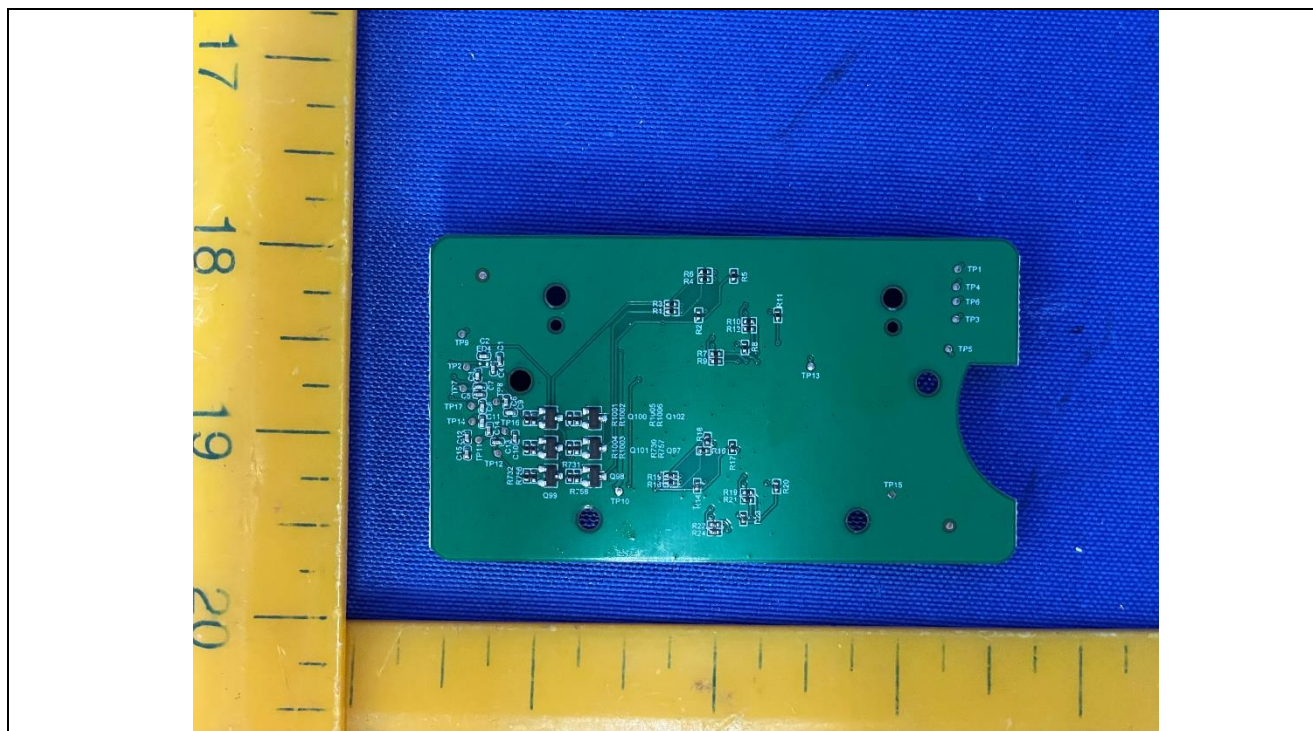


Details of: Button PCB view



Internal Photos for Model No. T10 SE

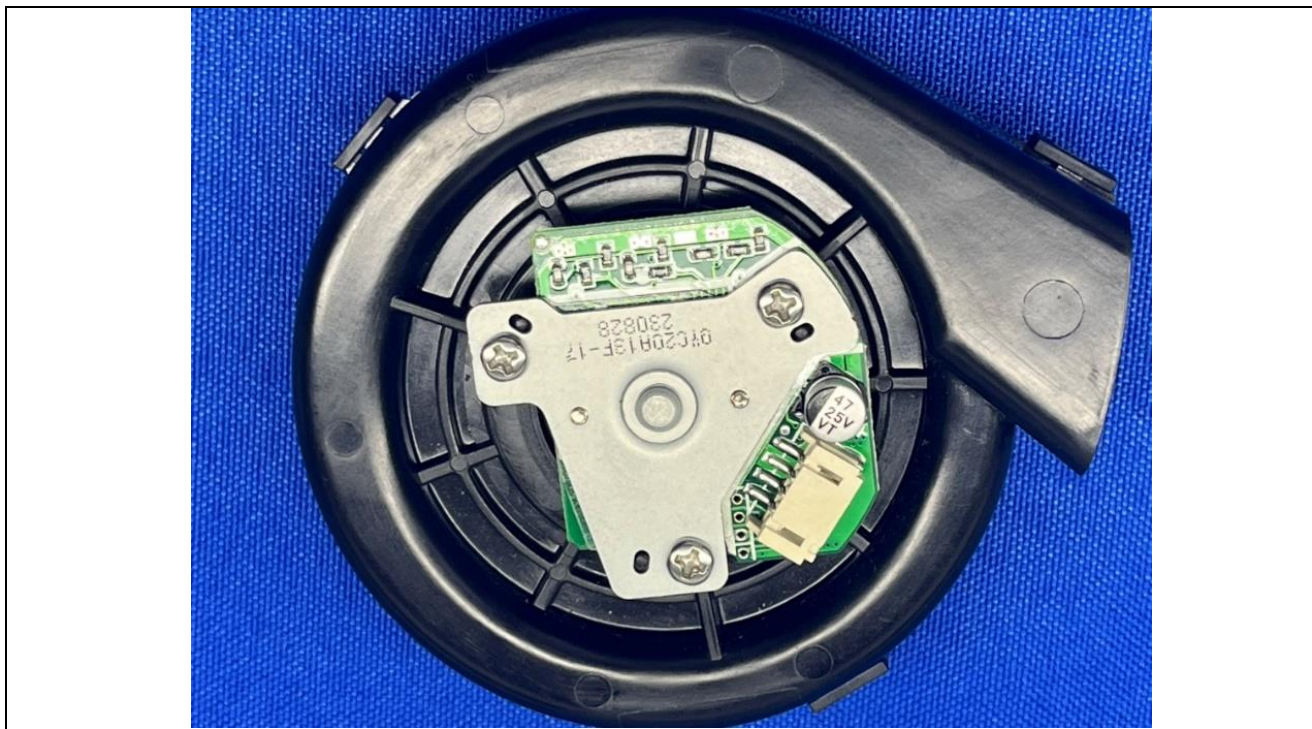
Details of: Button PCB view



Details of: Battery



Details of: Vacuum motor



Details of: Side brush motor



Internal Photos for Model No. T10 SE

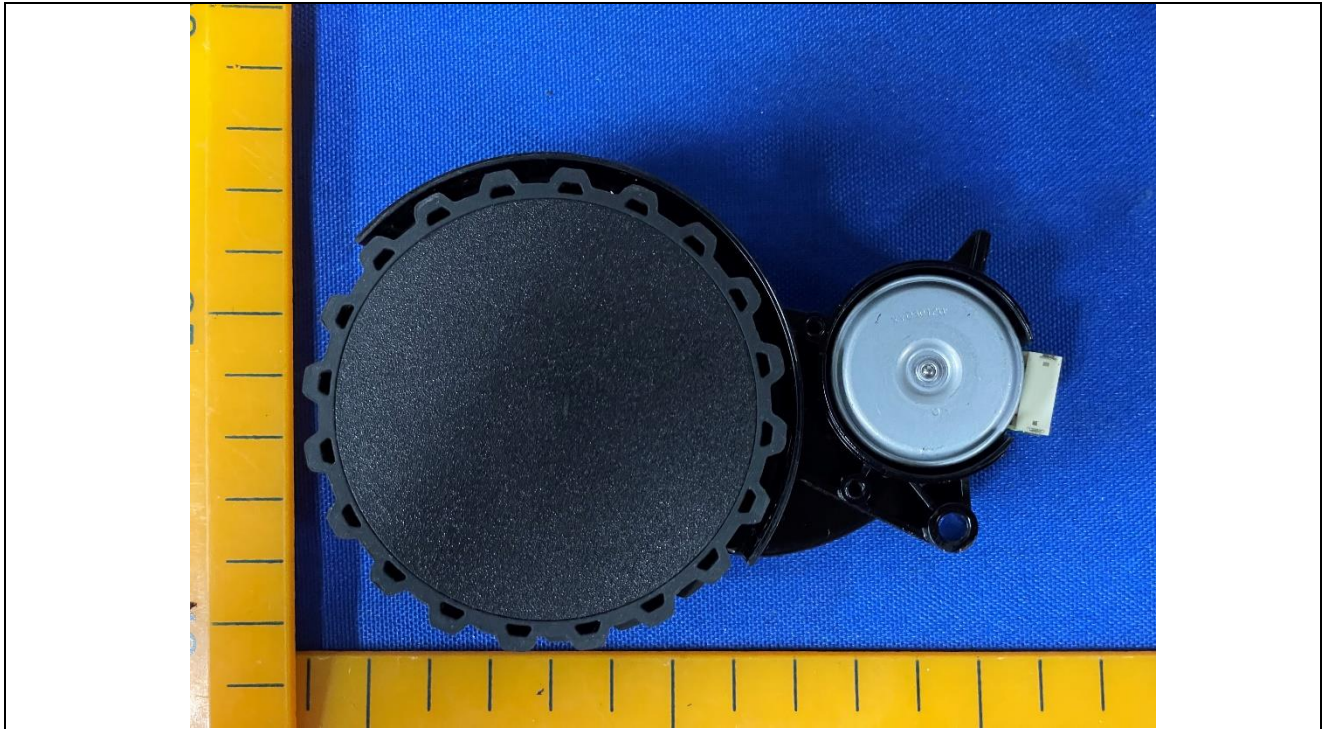
Details of: Main brush motor



Details of: Pump motor



Details of: Wheel motor



Details of: Laser module

