
1 Get the app

Please download app: nut from appstore.

Or scan QR code to download the app.



*App upgrade may lead to UI changes. the UI in this guide is for reference only.

2 Turn on Bluetooth

Make sure your Bluetooth on the phone is on.



Setting



3 Sign up

Start nut app and press the Sign up button.



*Also you can use sina weibo account to sign up.

Use your mobile phone number to sign up and set your password.



4 Pair the nut

Put nut close to your mobile phone and press the button for 5 seconds.



After hearing it "Beep" and seeing the light twinkling, then the phone shows "Pairing Success" and twinkle stops.



5 Take a Picture of item and Confirm

Edit name of your item or change its picture, and accomplish the pairing process by pressing the icon topright.



6 Bound your item with nut

Try to take your item far from your phone and the distance between nut and phone will show on app promptly. Notification and alerts will appear on the phone and nut while they are beyond certain distance.



Know the nut

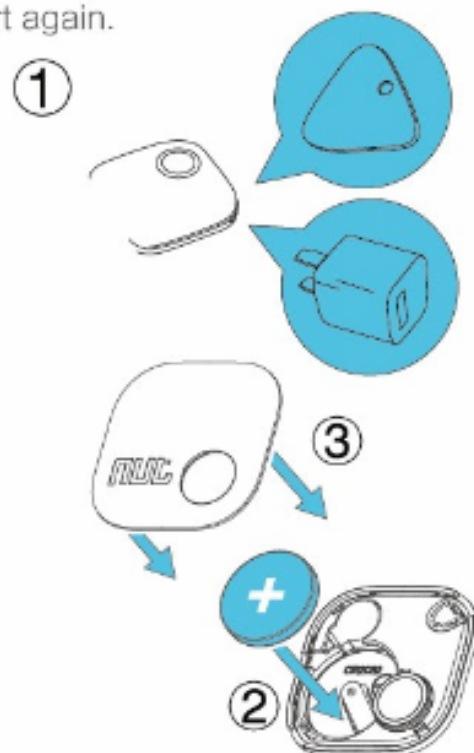
1. Sharp hole
2. Indicator light
3. Button: for phone pairing and wake up nut
4. Notch: for changing battery



Change Battery

When the battery is low, nut will tell you ahead.

1. Open nut from the notch side. If necessary, may require tools as flat-blade charger plug.
2. Take out the old battery and put a new CR2032 Battery.
3. Close the nut and press the button, it will restart again.



If necessary, may require tools, as the pick in the package or pin on the plug.

Install Strap

A strap shall be used, when you want to hang the F5D model nut on the key, bag or other things. Please open the nut by the coving of the conor, put the strap inside the groove, and close the nut.



FCC Information and Copyright

This equipment has been tested and found to comply with the limits for a Class B digital device, pursuant to part 15 of the FCC Rules.

These limits are designed to provide reasonable protection against harmful interference in a residential installation. This equipment generates,

uses and can radiate radio frequency energy and, if not installed and used in accordance with the instructions, may cause harmful interference

to radio communications. However, there is no guarantee that interference will not occur in a particular installation. If this equipment does

cause harmful interference to radio or television reception, which can be determined by turning the equipment off and on, the user is

encouraged to try to correct the interference by one or more of the following measures:

- Reorient or relocate the receiving antenna.
- Increase the separation between the equipment and receiver.
- Connect the equipment into an outlet on a circuit different from that to which the receiver is connected.
- Consult the dealer or an experienced radio/TV technician for help.

15.19 Labelling requirements.

This device complies with part 15 of the FCC Rules. Operation is subject to the following two conditions:

- (1) This device may not cause harmful interference, and
- (2) this device must accept any interference received, including interference that may cause undesired operation.

changes or modifications not expressly approved by the party responsible for compliance could void the user's authority to operate the equipment.

FCC RF warning statement: the device has been evaluated to meet general RF exposure requirement , The device can be used in portable exposure condition without restriction.