



Date 8 October 2014

Federal Communications Commission
Equipment Authorisation Branch
7435 Oakland Mills Road
Columbia, MD 21046
United States of America

To whom it may concern

Alternative Label Placement - FCC ID: 2ADCE-FH-HULL

The abrasive sand and marine environment in which the Fish Harvester Hull will be subject to during its service life will impinge on the legibility of any markings or labels etched in or adhered to the exposed polyethylene outer hull.

On this basis we deem it necessary to affix any permanent information to an alternate location within the vessel.

Operating instructions prescribe manual installation and connection of batteries prior to activating the Fish Harvester.

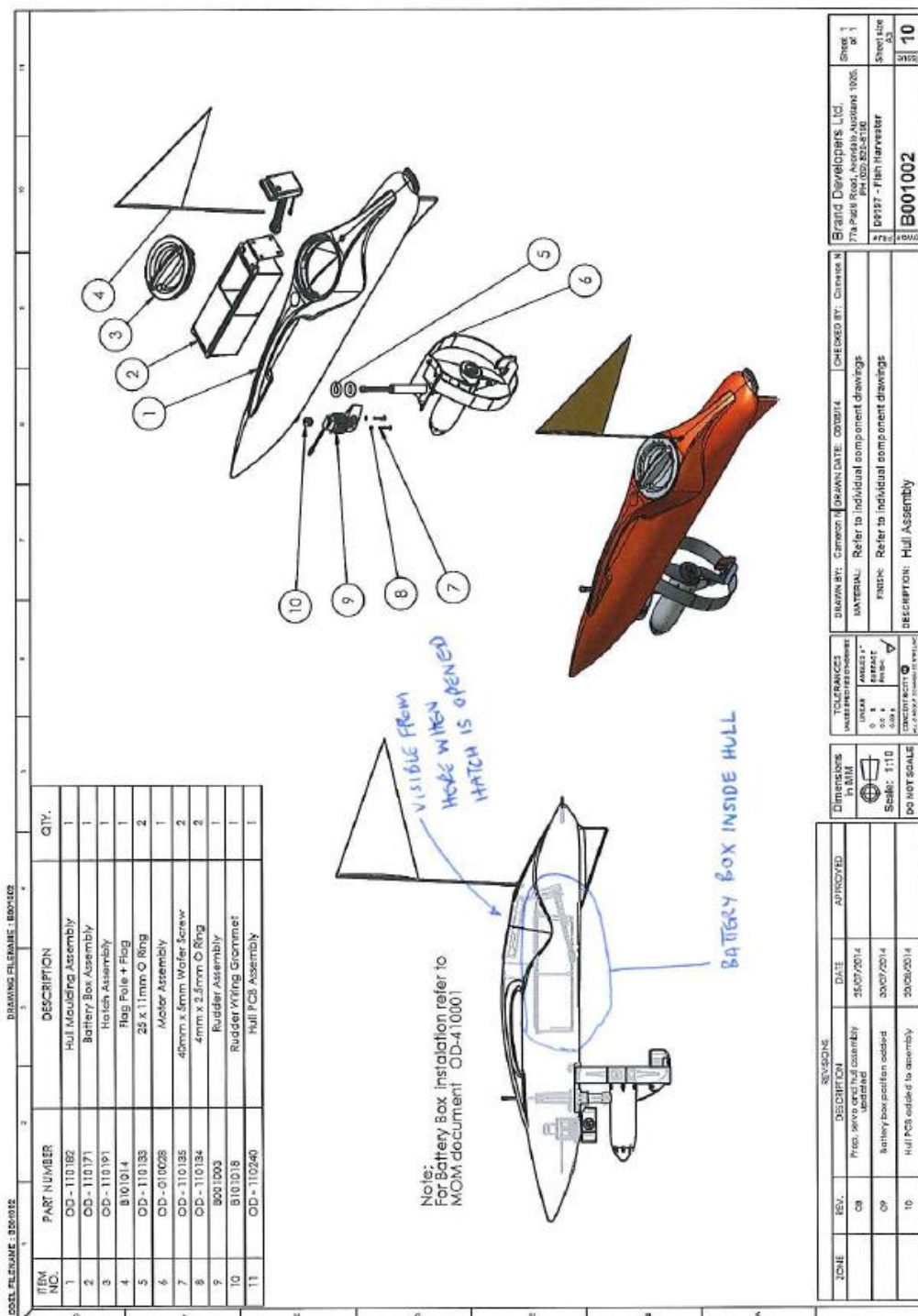
This requires opening the Hatch Assembly indicated in Figure 1, which in turn provides sufficient exposure of a label placed on the Battery Box Assembly as illustrated in Figure 2.

Opening the hatch is a regular part of operating the Fish Harvester.

We therefore request authorisation from the Federal Communications Commission for the implementation of this alternative label placement.

Yours Faithfully

Mikael Stewart
Senior Electronic Development Engineer
Brand Developers Ltd



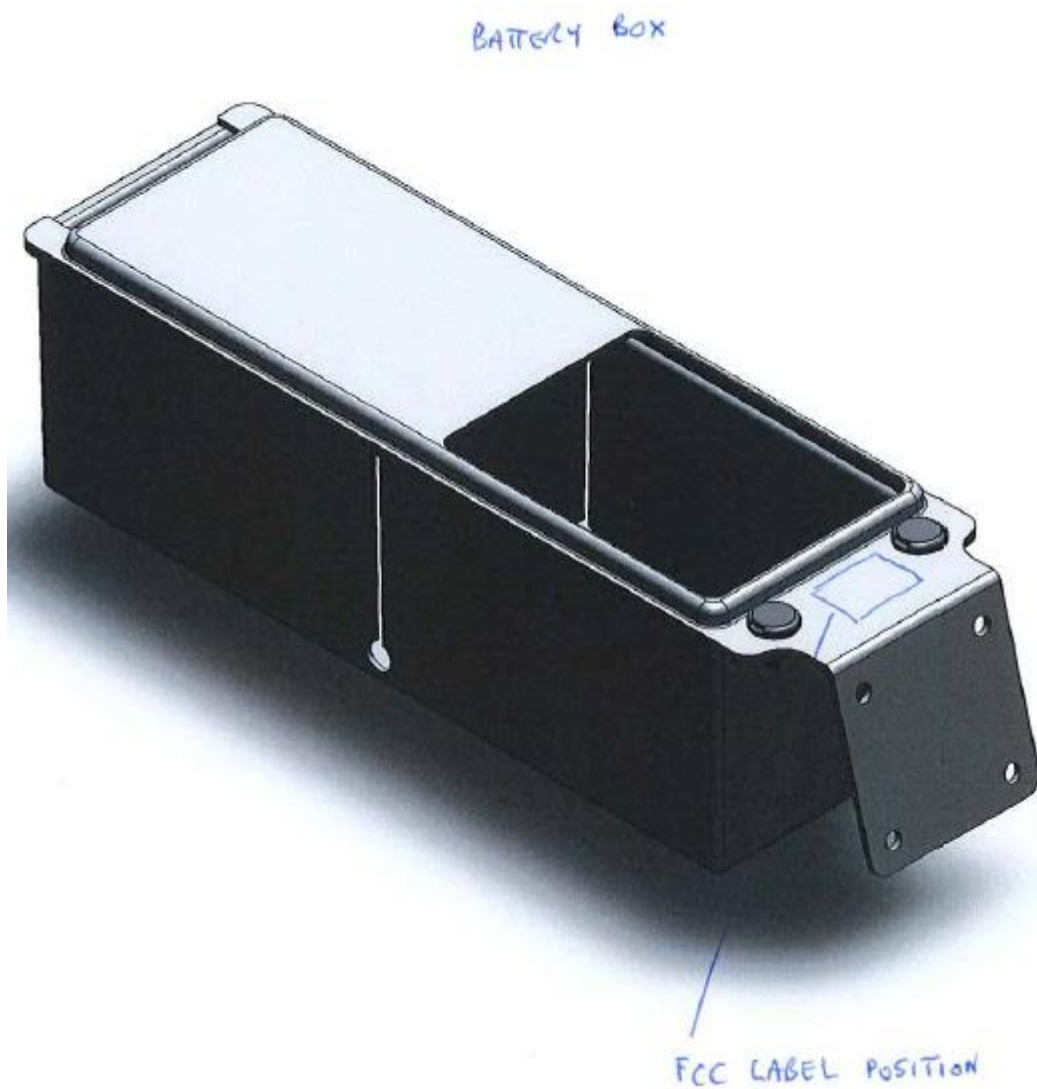


Figure 2. FCC label location on internal battery box



