

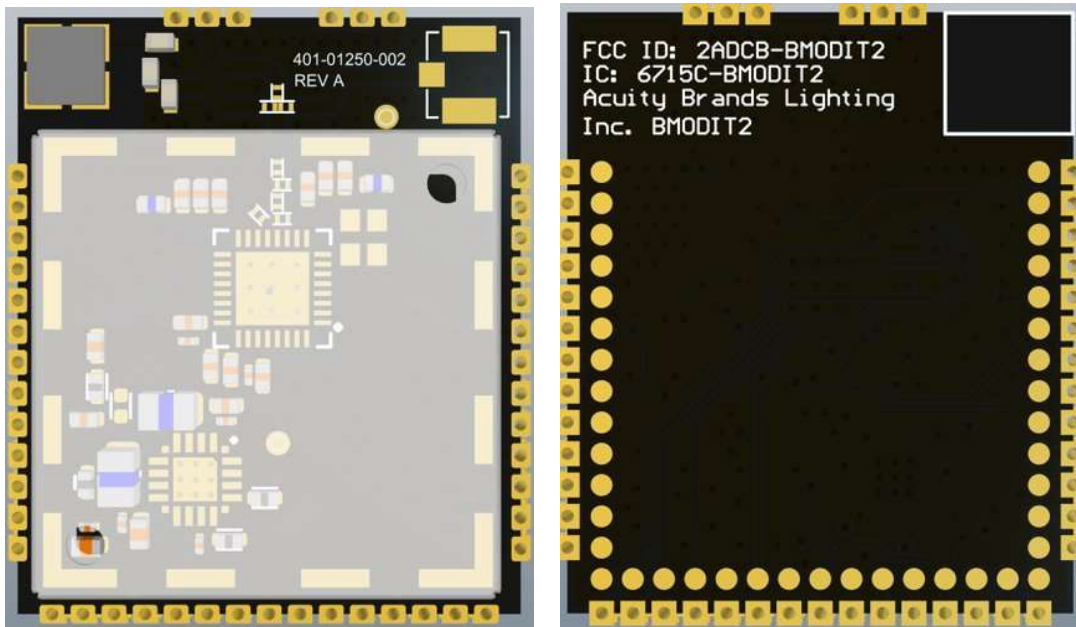
# BMODIT2 Labeling Requirements

## Module Label

A label will be silkscreened to the module. The size of this label will be no greater than 10x16mm. And will contain the following text:

FCC ID: 2ADCB-BMODIT2  
IC: 6715C-BMODIT2  
Acuity Brands Lighting Inc.  
BMODIT2

## Module Label Picture



## Host Label

A label will be affixed to the host device with the following text:

Contains FCC ID: 2ADCB-BMODIT2  
Contains IC: 6715C-BMODIT2  
Acuity Brands Lighting Inc.

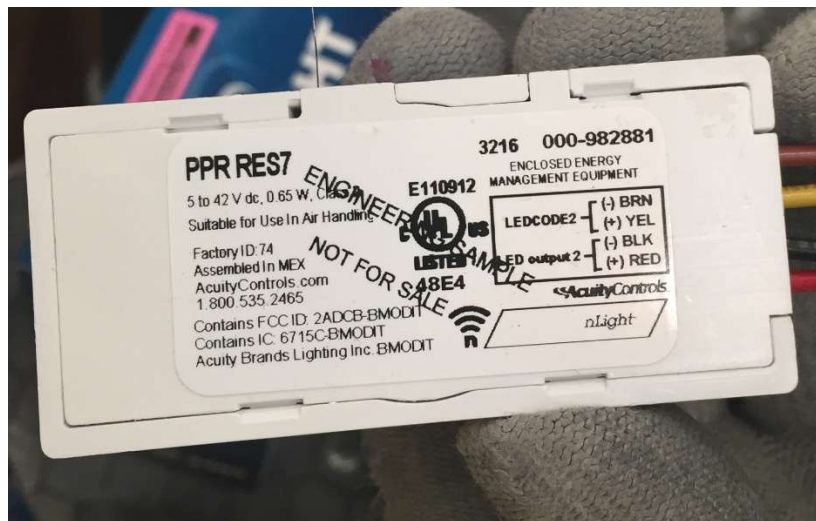
This device complies with Part 15 of the FCC Rules.  
Operation is subject to the following two conditions:  
(1) This device may not cause harmful interference,  
and (2) this device must accept any interference  
received, including interference that may cause  
undesired operation.

The label will be properly sized to fit the application. If the host device is smaller than the palm of a hand, the label will be:

Contains FCC ID: 2ADCB-BMODIT2  
Contains IC: 6715C-BMODIT2  
Acuity Brands Lighting Inc.

The label will be properly sized to fit the application.

Example:



### Confidentiality Notice:

The information in this document is a property of Acuity Brands Lighting and is to be held in complete confidence. Any reproduction or redistribution of this document without the written consent of Acuity Brands Lighting is prohibited.



### User Manual:

The BMODIT2 user manual will contain all information required to create a label.

**Confidentiality Notice:**

The information in this document is a property of Acuity Brands Lighting and is to be held in complete confidence. Any reproduction or redistribution of this document without the written consent of Acuity Brands Lighting is prohibited.