

INTERNAL PHOTOGRAPHS

This document contains 6 photographs

Photograph No.1
Thin Point tag internal view



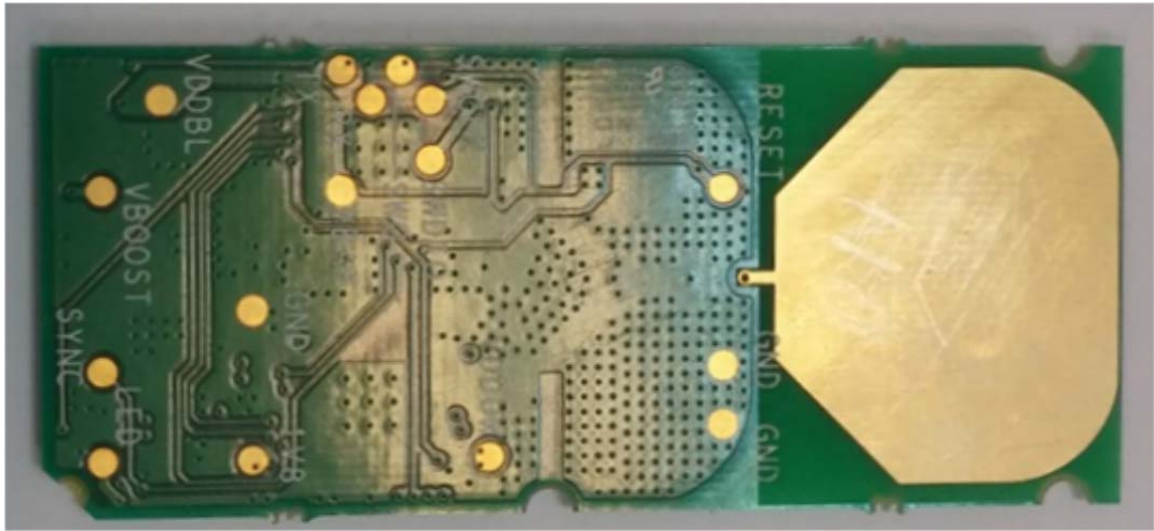
Photograph No.2
Thin Point tag PCB with battery front side view



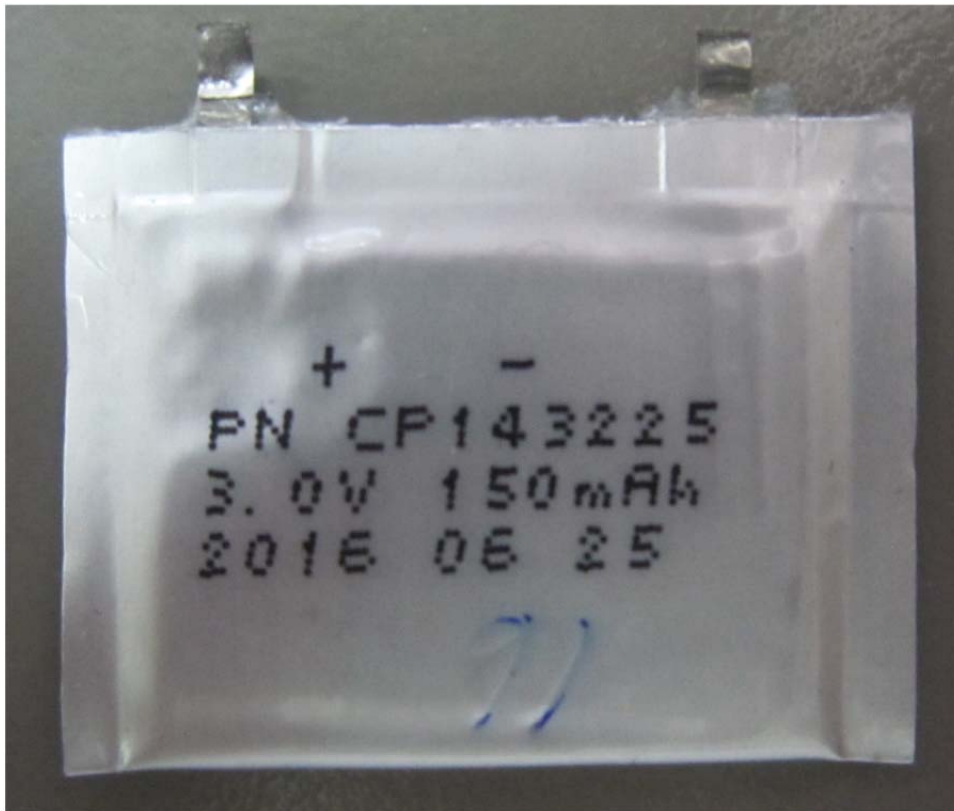
Photograph No.3
Thin Point tag PCB with battery rear side view



Photograph No.4
Thin Point tag printed antenna view



Photograph No.5
Thin Point tag PCB battery



Photograph No.6
Thin Point tag plate

