



包装包含:说明书×1 蓝牙键盘×1 USB充电线×1

- 1 -

#### 产品型号规格

- 1.蓝牙标准接口
- 2.有效操作距离: 10米内
- 3.调制方式: GFSK
- 4.工作电流: <9mA(触摸板工作时)
- 5.待机电流: <0.3mA
- 6.睡眠电流: <40uA
- 7.充电电流: 200mA
- 8.待机时间: > 100天
- 9.充电时长: 2-3小时
- 10.锂电池容量: 400mAh
- 11.工作时长: 不小于50/100小时(关闭背光)
- 12.锂电池寿命: 3年
- 13.按键力度: 80±10g
- 14.按键寿命: 500万次点击
- 15.工作温度: -10°C ~ +55°C

#### 入门指南

- 蓝牙/工作指示灯: 进入蓝牙配对模式后慢闪, 连接成功长亮, 键盘休眠或关机后熄灭
- 大小写状态指示灯: 当键盘处于大写输入状态时灯亮
- 弱电指示灯: 当电压低于3.3V时闪烁, 提示需要充电
- 充电指示灯: 充电时长亮, 充满后亮绿灯
- USB Type C 充电接口: 弱电指示灯闪烁时, 请将原装配件USB充电线插入此口进行充电, 建议使用5V 1A设备充电
- 电源开关
- 蓝牙配对键

- 2 -

#### 蓝牙键盘连接操作步骤

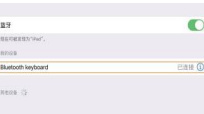
- 1.拨动开关至ON处, 蓝牙指示灯、大小写指示灯、弱电指示灯同时长亮3秒后转蓝牙工作灯长亮, 手动按“connect”进入配对(蓝牙指示灯慢闪)
- 2.打开并解锁iPad, 点击“设置”图标



- 3.在设置菜单中, 点击“蓝牙”菜单
- 4.打开蓝牙开关, iPad会自动搜索蓝牙键盘设备



- 5.发现蓝牙键盘设备: Bluetooth Keyboard, 点击它并确认连接后, 蓝牙键盘会自动连接
- 6.蓝牙连接成功后, 工作指示灯长亮, 在蓝牙设备列表中会显示此设备“已连接”



- 3 -

#### 蓝牙快捷功能说明

	语言切换
	背光亮度调节

注: 背光版本的键盘才有此按键  
亮度调节: 组合按键, 共3档亮度循环

- 4 -

#### iOS 14.5以上系统触摸板手势

	点按 (简单按下或轻点按)
	拖移 (点按后按住, 然后手指在触控板上滑动以移动它)
	打开程序坞 (将手指从屏幕底部向上滑动)
	显示侧边栏 (将手指从屏幕右侧向左滑动, 若要隐藏侧边栏, 请再次向左滑动)
	打开“控制中心” (将手指从屏幕底部向上滑动, 若要隐藏控制中心, 请再次向上滑动)
	打开“通知中心” (将手指从屏幕顶部向下拉动)

- 5 -

	点按 (简单按下或轻点按)
	拖移 (点按后按住, 然后手指在触控板上滑动以移动它)
	打开程序坞 (将手指从屏幕底部向上滑动)
	显示侧边栏 (将手指从屏幕右侧向左滑动, 若要隐藏侧边栏, 请再次向左滑动)
	打开“控制中心” (将手指从屏幕底部向上滑动, 若要隐藏控制中心, 请再次向上滑动)
	打开“通知中心” (将手指从屏幕顶部向下拉动)

- 6 -

#### 注意

- 1.在长期不使用时, 我们建议关闭键盘, 以延长电池的使用寿命
- 2.为了获得更长的电池使用寿命, 建议电源灯闪烁时才给键盘充电, 每次充电时间最好不要少于2小时

#### 节能休眠模式

当键盘15分钟内无任何操作, 将会自动进入休眠模式, 所有LED都会关闭, 需要使用时, 只需要按任意键并等待3秒左右, 键盘会被唤醒并自动连接蓝牙, 就可以进行正常工作

#### 故障清理

- 1.确定已开启电源
- 2.确定键盘在可操作的距离范围内
- 3.确定无线键盘与蓝牙已配对
- 4.确定平板电脑的蓝牙设置已打开
- 5.确定无线键盘和蓝牙连接
- 6.确定无线键盘与蓝牙已配对

#### 清洁

用清水, 酒精或类似酒精的消毒剂清洁键盘

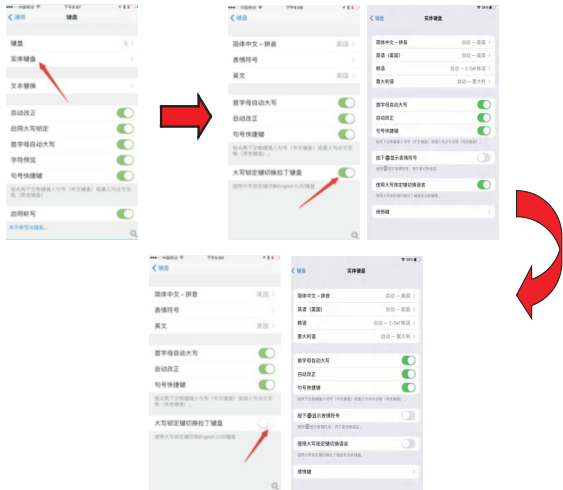
#### 充电

- 当电池电量低时, 低电量指示灯会不断闪烁, 这时需给键盘充电
- 1.将原装配件USB线Type C 端连接到键盘上的充电接口
  - 2.将USB线A端连接到电源适配器或电脑USB接口(电源适配器不包括)
  - 3.键盘充电过程中, 充电指示灯会长亮, 充满后亮绿灯

- 7 -

iOS 升到10-12, 蓝牙键盘上的CapsLock键会默认为切换为拉丁键盘的功能(iOS 13-15 CapsLock键会默认为切换语言功能), 从而导致无法进行大小写切换, 可做以下设置, 还原正常功能:

- 1.首先连接上蓝牙
- 2.在设置->通用里面会看到一个实体键盘
- 3.点进去后, 会看到“大写锁定键切换拉丁键盘”, (iOS 13-15 CapsLock键会默认为切换语言功能)“是”打开状态, 关闭即可



- 8 -

## 保修卡

#### 用户填写资料

公司或个人全称 \_\_\_\_\_

通讯地址 \_\_\_\_\_

电话 \_\_\_\_\_ 邮编 \_\_\_\_\_

所购产品名称及型号 \_\_\_\_\_

购买日期 \_\_\_\_\_

本有质保不涵盖由于以下原因导致的问题或损坏:  
(1) 意外事件、使用、操作不当或任何未经授权维修、改装或者所装  
(2) 操作或维护不当, 使用过程中违反产品说明或连接不当的电源  
(3) 或者使用并非本公司提供的消耗品(如备用电池), 但适用法律禁止此类限制的情况除外



- 9 -

#### FCC Caution:

This device complies with part 15 of the FCC Rules. Operation is subject to the following two conditions: (1) This device may not cause harmful interference, and (2) this device must accept any interference received, including interference that may cause undesired operation.

Any Changes or modifications not expressly approved by the party responsible for compliance could void the user's authority to operate the equipment.

**Note:** This equipment has been tested and found to comply with the limits for a Class B digital device, pursuant to part 15 of the FCC Rules. These limits are designed to provide reasonable protection against harmful interference in a residential installation. This equipment generates uses and can radiate radio frequency energy and, if not installed and used in accordance with the instructions, may cause harmful interference to radio communications. However, there is no guarantee that interference will not occur in a particular installation. If this equipment does cause harmful interference to radio or television reception, which can be determined by turning the equipment off and on, the user is encouraged to try to correct the interference by one or more of the following measures:

- Reorient or relocate the receiving antenna.
- Increase the separation between the equipment and receiver.
- Connect the equipment into an outlet on a circuit different from that to which the receiver is connected.
- Consult the dealer or an experienced radio/TV technician for help.

The device has been evaluated to meet general RF exposure requirement. The device can be used in portable exposure condition without restriction.

-10-

## Wireless Keyboard User Manual (for iOS)



Package included: Instruction manual×1 Wireless keyboard×1 USB charging cable×1

- 1 -

#### Product Model Specification

- 1.Bluetooth Interface Standard
- 2.Operating Distance Available: 10 meters
- 3.Modulation System: GFSK
- 4.Working Current: < 9mA (When the touchpad is working)
- 5.Standby Current: < 0.3mA
- 6.Sleeping Current: < 40uA
- 7.Charging Current: 200mA
- 8.Standby Time: > 100 days
- 9.Charging Time: 2-3hours
- 10.Lithium Battery Capacity: 400mAh
- 11.Working Time: > 50/100 hours (turn off the backlight)
- 12.Lithium Battery Life: 3 years
- 13.Key Strength: 80±10g
- 14.Key Life: 5 Million Stroke
- 15.Operating Temperature: -10°C ~ +55°C

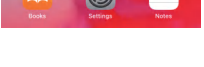
#### Getting Started Guide

- Bluetooth/Working Indicator: Slow flash after entering the Bluetooth pairing mode, long turn on when the connection is successful, and turn off after the keyboard sleeps or shuts down
- Caps Lock Indicator: Lights up when the keyboard is in uppercase input
- Low Battery Indicator Light: The light will blink when the voltage is lower than 3.3V
- Charging Indicator: The light will be on when charging, when fully charged the indicator light is steady to green light
- USB Type C Charging Dock: When Weak current indicator light flashes, put the original accessories, plug the USB charging cable into this port for charging. Recommended to use a 5V 1A device to charge it
- Power Switch
- Bluetooth pairing key

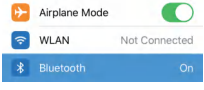
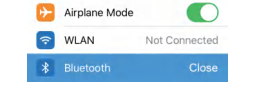
- 2 -

#### Bluetooth Keyboard Connection Steps

- 1.Toggle the switch to ON, the Bluetooth indicator, Caps Lock indicator, and weak power indicator will light up for 3 seconds at the same time, then the keyboard working indicator turn on, manually press “connect” to enter pairing (the Bluetooth indicator flashing slowly)
- 2.Open and unlock your tablet and click on the “Settings” icon



- 3.In the settings menu, click on the “Bluetooth” menu
- 4.Turn on the Bluetooth switch and the tablet will automatically search for Bluetooth keyboard devices



- 5.Discover the Bluetooth keyboard device: Bluetooth Keyboard, click it and confirm the connection, the Bluetooth keyboard will automatically connect
- 6.After the Bluetooth connection is successful, the working indicator will turn off, and the device will display “connected” in the Bluetooth device list



- 3 -

#### Keyboard Shortcut Function Description

	Language switching
	Backlight brightness adjustment

Note: This button is only available on the backlit version of the keyboard  
Brightness adjustment: 组合按键, Three brightness cycles in total

- 4 -

	Click (Press with one finger until it feels a little pressed)
	Click and hold (Press and hold with one finger)
	Drag and move (Tap and hold an item, then swipe your finger across the trackpad to move it)
	Open dock (Swipe the pointer with one finger from the bottom of the screen)
	Show side dock (Swipe the pointer across the right edge of the screen with one finger. To hide the side dock, swipe right again)
	Open “control center” (Move the pointer with one finger to select the status icon at the top right and click. Or select the status icon in the upper right and swipe up)
	Open “notification center” (Move the pointer with one finger to select the status icon at the top left and click. Or use one finger to move the pointer near the middle at the top of the screen)

- 5 -

	Click (Press with one finger until it feels a little pressed)
	Click and hold (Press and hold with one finger)
	Drag and move (Tap and hold an item, then swipe your finger across the trackpad to move it)
	Open dock (Swipe the pointer with one finger from the bottom of the screen)
	Show side dock (Swipe the pointer across the right edge of the screen with one finger. To hide the side dock, swipe right again)
	Open “control center” (Move the pointer with one finger to select the status icon at the top right and click. Or select the status icon in the upper right and swipe up)
	Open “notification center” (Move the pointer with one finger to select the status icon at the top left and click. Or use one finger to move the pointer near the middle at the top of the screen)

- 6 -

#### Attention

- 1.When not use for long time, suggest to close keyboard, in order to prolong battery life
- 2.In order to get longer battery lift, charging before keyboard power light flashes, charging time must be better more than 2 hours

#### Energy Saving Sleep Mode

When keyboard not use will be enter sleep mode after 15 minutes, keyboard indicator will off press any key 3s to wake it up when need use again, then keyboard indicator will turn on

#### Troubleshooting

- 1.Make sure the power is turned on
- 2.Ensure keyboard operable distance
- 3.Make sure the battery has power
- 4.Ensure the device's Bluetooth was turned on
- 5.Ensure the wireless keyboard was connected with the Bluetooth
- 6.Ensure the wireless keyboard paired successfully

#### Cleaning

Washing, alcohol or a similar cleaning agent decontamination keyboard

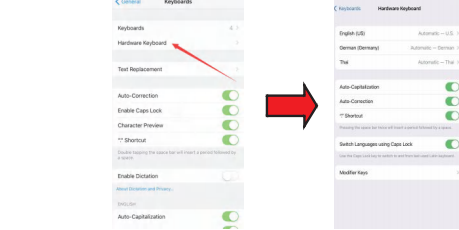
#### Charging

- When battery is low, the power indicator blinking, means need to charge the keyboard
- 1.Connect Genuine Parts USB cable B port to keyboard cradle
  - 2.Connect USB cable A port to power adapter or computer USB port
  - 3.During charging, the charging indicator will be on, and it will turn green when fully charged

- 7 -

When system is upgraded to iOS10 - iOS12, the CapsLock key on the Bluetooth keyboard will default to the function of switching to the Latin keyboard (the CapsLock key will default to the function of switching language in iOS 13-15), which makes it impossible to switch between upper and lower case. You can do the following settings to restoring normal functionality:

1. First connect the bluetooth
2. Settings -> General -> Hardware keyboard
3. After clicking in, you will see “Caps Lock Latin Switch”, (iOS 13-15 CapsLock key will default to switch language function) is on, just turn it off



- 8 -

## Warranty Card

#### User information

Company or personage full name \_\_\_\_\_

Contact address \_\_\_\_\_

TEL \_\_\_\_\_ Zip \_\_\_\_\_

The purchased product name and model NO. \_\_\_\_\_

Purchased date \_\_\_\_\_

This reason due to the product broken and damage is not include on the warranty:  
(1) Accident, misuse, improper operation, or any unauthorized repair, modified or removed  
(2) Improper operation or maintenance, when operation violation of the instructions or connection unsuitability power supply  
(3) Or use consumables not provided by our company (such as spare batteries), unless such restrictions are prohibited by applicable law



- 9 -

字体: 思源黑体中文 + arial字体英文