

HEXA BlueM



WIN I8080
User manual



Introduction

Thank you for your choosing the new MID.


This guide serves to enable users to get to know and familiar with our product as soon as possible.

Here we have made a brief introduction to the key layout and definitions in figures and words.

Contents

I . Precautions before Use	03
II . Key Layout and Definitions	04
III . Key Descriptions and Applications	05
IV . Introduction to Desktop	06
1. Windows8.1 Start Screen	06
2. Image Slide Application	06
3. apps Introduction	08
4. Charm Menu Column	09
5. Double Screen Application	11
V . Basic Operations	12
1. Dormancy, Restart, and Power off	12
2. Security Management	12

I . Precautions before Use

This production is suitable for use in non-tropic areas below 2,000 meters, and the mark  in the nameplate indicates the product is suitable for use in non-tropic areas.

2. Prevent the MID from falling to the ground or being strongly impacted otherwise.

3. Do not use it in the long term in any environment where the air is too cold, too hot (<40°C), too humid or with too much dust. Do not expose the MID to sunlight.

4.

Avoid using it in the strong magnetic and strong static environment as much as possible.

5. Once any water or other liquid splashes onto the MID, close it immediately and do not use it until it dries out.

6. Do not clean the MID with any detergent containing chemical element or other liquid to avoid causing damage due to corrosion and becoming damp. If cleaning is really necessary, clean it with dry soft cloth tissue paper.

7.

Our company shall not bear any and all responsibilities for loss or deletion of material inside the machine caused due to abnormal software and hardware operation, maintenance or any other accident.

8. Please back up your important material at any time to avoid loss.

9. Please do not disassemble the MID by yourself; otherwise you will lose the right to warranty.

10. This product supports the overwhelming majority of mainstream brands of 3G DONGLE network cards. The cases for 3G Dongle may be different. It is suggested that you test it to make sure it is OK before buying it.

11. Quick Use Guide and the relevant software shall be updated at any time. For updated software version, visit www.xxx.com for downloading by yourself, and no notice shall be given otherwise.

If any anything is found to be inconsistent with the Quick Use Guide, the material object shall prevail.

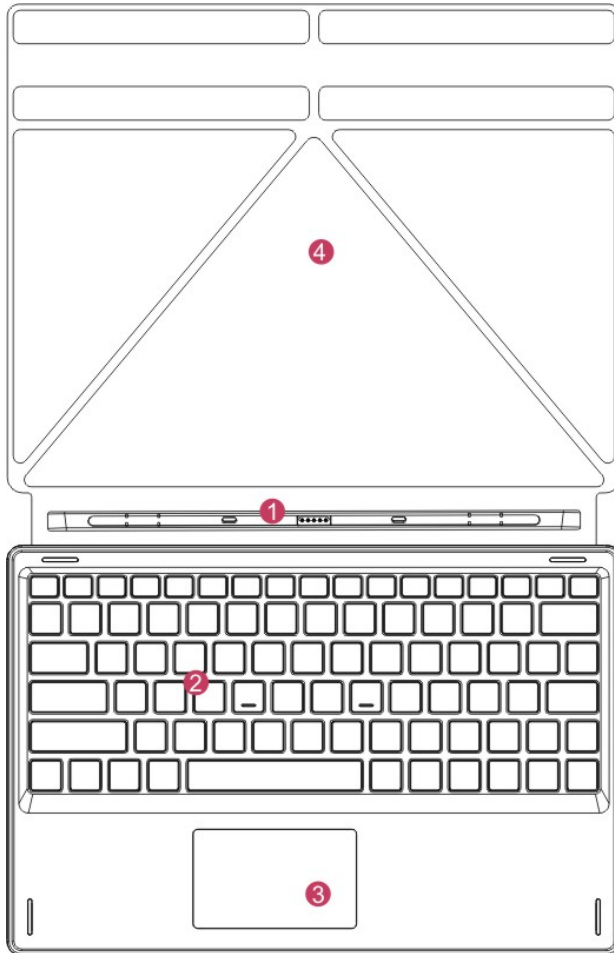
12. Replacement with incorrect type batteries may cause explosion. Make sure to use original batteries.



- ① Sound-/sound+: Lower/raise volume
- ② Front CCD camera: take photos, and record pictures
- ③ CCD camera indicator: The CCD camera indicator will be on when the built-in CCD camera is used.
- ④ Ambient light sensor: Light sensor detects ambient light and change screen brightness.
- ⑤ Windows key: Press this button to return to the Start screen.
- ⑥ Movable base keyboard interface: This interface is magnetic, which is convenient for alignment and firmly linking the Table PC and the keyboard.
- ⑦ Back CCD camera: take photos, and record pictures
- ⑧ Loudspeaker: The built-in loudspeaker enables you to hear the sound without having to linking additional device.
- ⑨ Power button: Press it down to start or close the touch screen panel. You can also let the computer to enter dormancy through this button or wake from the dormancy mode.
- ⑩ Socket for earphone and microphone: This socket can transmit the audio signals of MID to loudspeaker or earphone.
- ⑪ Reset key: Restart system, and reset system function.
- ⑫ Mini HDMI Interface: High-Definition Multimedia Interface
- ⑬ MicroSD 与 MicroSDHC 格式 Micro SD card slot: The built-in storage card reader slot supports MicroSD and MicroSDHC format.
- ⑭ Micro USB Interface: You can read the data through USB.
- ⑮ Microphone connector outlet
- ⑯ Power DC Interface: Recharge your MID through DC interface.

III. Descriptions of Keys

Attention: Keyboard is optional, and configure the product according to the specific type of the MID you have bought.



① Movable base keyboard interface: This interface is magnetic, which is convenient for alignment and firmly linking the Table PC and the keyboard.

② Keyboard group: The keyboard group provides full size QWERTY key and best typewriting comfortability.

③ Touch Tablet: Used to control the cursor on the MID, with the same function as a mouse.

④ Base: Folding base of MID.

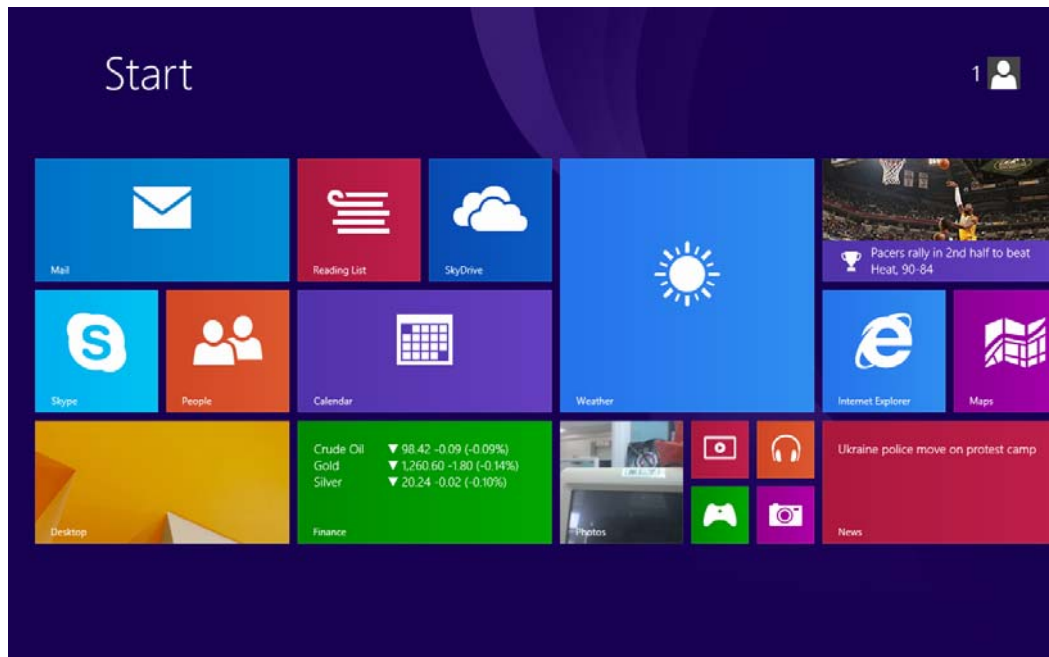


Use of tablet and keyboard

VI. Introduction to Desktop

1. Windows 8.1 start image: On the start screen, you can see many programs fixed in the image. These application programs are displayed in the form of “magnet”. As long as you click them, you can easily visit them.

You need to log on your Microsoft account before the application program completely runs.



2. Image slide applications

Slide to right



Slide to the right from the left side of the screen to start the application program in running.

Slide to left



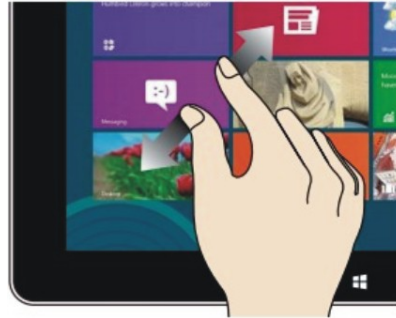
Slide to the left from the right side of the screen to start Charm menu column.

Reduce



On the touch screen, narrow two fingers to reduce the image.

Enlarge



On the touch screen, widen two fingers to enlarge the image.

Slide downward



In start screen, slide from the top of the screen to view all application programs

Slide with finger



In start screen, slide finger right and left to move the image.

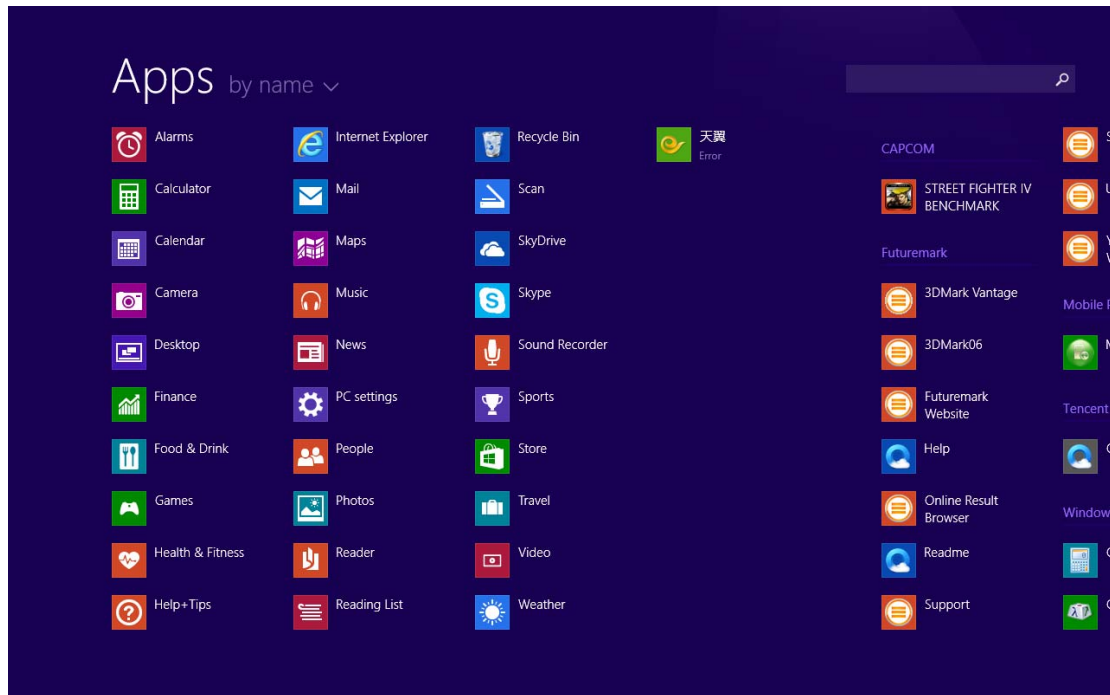
Slide upward



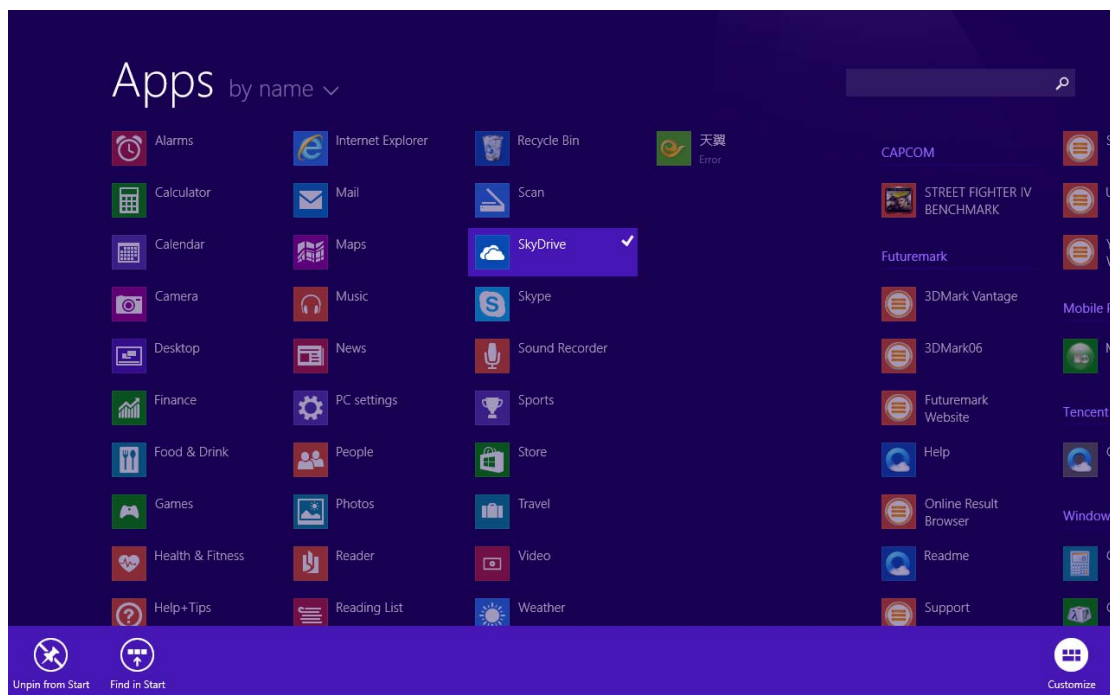
In the start screen, slide upward from the bottom of the screen to visit all application program (APPS) interfaces.

3. Introduction to app Interface

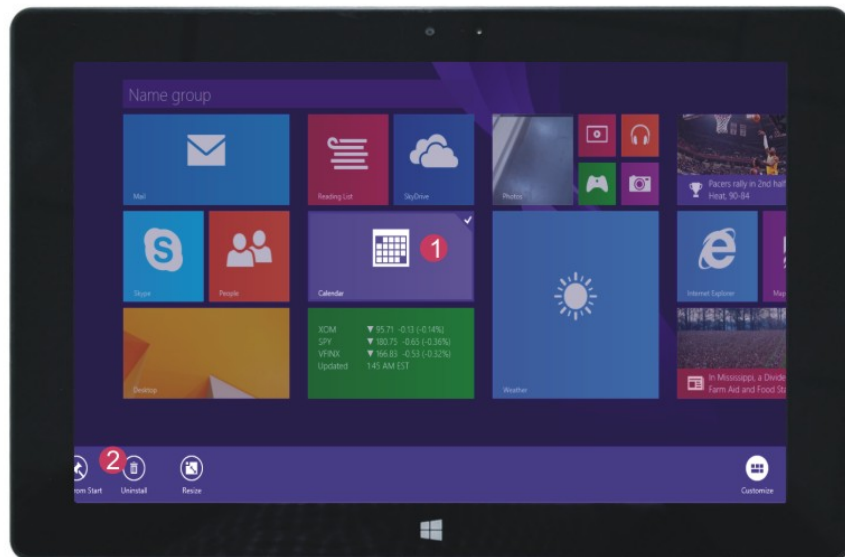
Besides the application programs already fixed on the start screen, you can also start other application programs in all application programs, such as other software application programs attached to the MID.



If you want to fix more application programs on the start interface, see the operation in the figure below, (1) lightly touch, press and hold the application program magnet for about one second and then let go, and select (2) to fix to the start screen.



Conversely, if you want to cancel or delete a certain application in the start screen, (1) lightly touch, press and hold the application program magnet for about one second and then let it go and run, and select (2) attribute column to cancel the programs such as fixation and deletion and then it can be completed.



4. Charm menu column

Slide it to the left from the right side of the screen to start Charm menu column, including: Start, Device, Setup, Share, and Search Program.



Slide it to the left from the right side of the screen to start Charm menu column, including: Start, Device, Setup, Share, and Search Program.



Can let you search the files and application programs in the MID.



Can let you share the program through social exchange website or e-mail.



Can return to the start screen. From the start screen, you can also use this function to return the application program that is opened in the latest.



Can let you read, write and share files, connect external screen or printer with the device connected to the MID.



Can let you set up the Table PC.

Search menu



Share menu



Device Menu



Set up Menu



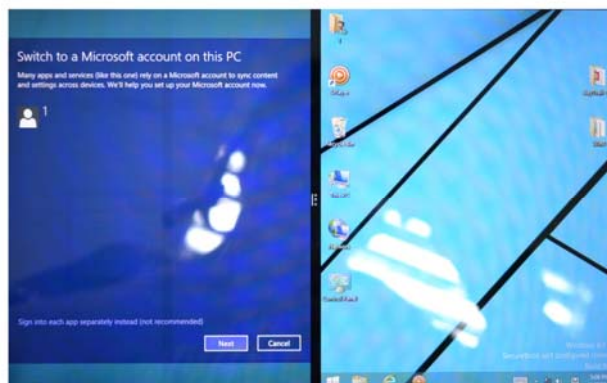
5. Dual-Screen Application

On my computer in (Figure 1), slide it inward from the left side of the screen, drag it and hold. Let go when seeing double interfaces appear.

In (Figure 2), press the partition button on the middle partition line and drag right and left to partition the display proportion of the double screens.



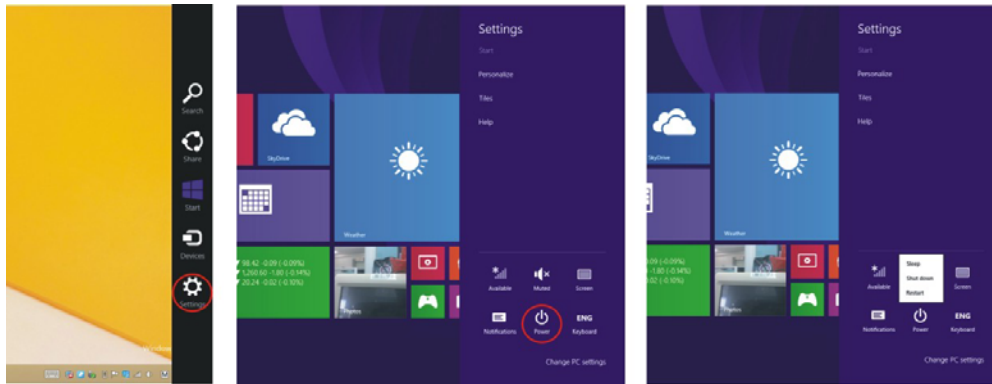
(Figure 1)



(Figure 2)

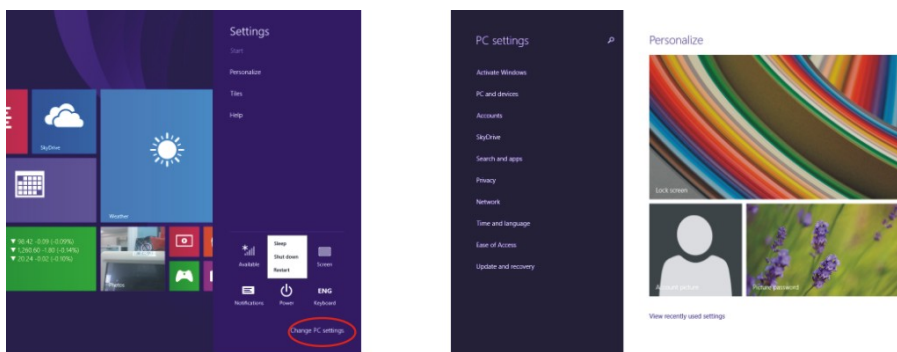
V. Basic Operations

1. Dormancy, restart and power off



2. Security Management

User and password setup



Method for quick setup:

Click the “Setup” button in “Charm” setup, and select “Change computer setup”. Select “User” on the left and click “Create local account” in “Your account” on the right side. After inputting the password of Complete Windows Live Id Account, input username, password, confirm password and password prompt.

FCC Information and Copyright

This equipment has been tested and found to comply with the limits for a Class B digital device, pursuant to part 15 of the FCC Rules.

These limits are designed to provide reasonable protection against harmful interference in a residential installation. This equipment generates,

uses and can radiate radio frequency energy and, if not installed and used in accordance with the instructions, may cause harmful interference

to radio communications. However, there is no guarantee that interference will not occur in a particular installation. If this equipment does

cause harmful interference to radio or television reception, which can be determined by turning the equipment off and on, the user is

encouraged to try to correct the interference by one or more of the following measures:

- Reorient or relocate the receiving antenna.
- Increase the separation between the equipment and receiver.
- Connect the equipment into an outlet on a circuit different from that to which the receiver is connected.
- Consult the dealer or an experienced radio/TV technician for help.

15.19 Labelling requirements.

This device complies with part 15 of the FCC Rules. Operation is subject to the following two conditions:

- (1) This device may not cause harmful interference, and
- (2) this device must accept any interference received, including interference that may cause undesired operation.

changes or modifications not expressly approved by the party responsible for compliance could void the user's authority to operate the equipment.

FCC RF warning statement: the device has been evaluated to meet general RF exposure requirement , The device can be used in portable exposure condition without restriction.