

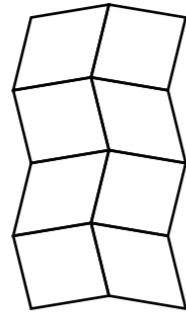
WATER-ZW1

尺寸: 150X255MM

材质:80g书写纸正反黑白印刷

折法: 风琴3+对折1

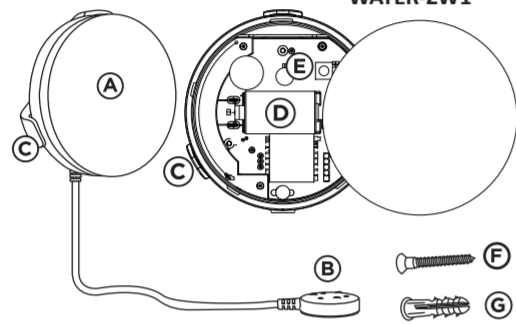
成品尺寸: 75X63.75MM



versa

Z-Wave Water Leak Sensor (800S)

· WATER-ZW1 ·



Part	Description
A	Water Sensor
B	Detect Pin with 4FT cable
C	Bracket
D	3.0V CR2 Lithium Battery *1
E	Learn Button
F	Mounting Screw
G	Mounting Anchor

- **Button Function:** Used for Include/Exclude Mode and Wake-Up Mode.
- **Water Detection:** When the device comes into contact with water, it triggers an alert, reports the device status, and activates the alarm sound.

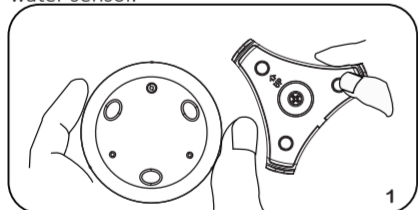
· FEATURES ·

- Real-Time Water leak Detection
- Compact & Durable Design
- Z-Wave 800LR to extend network range
- Battery-Powered Operation, long-lasting battery life with low-battery alerts for uninterrupted monitoring.
- Easy Installation: Flexible placement with adhesive pads or screws.
- Wide Compatibility: works with major Z-Wave Hubs for integration into multi-brand ecosystems.

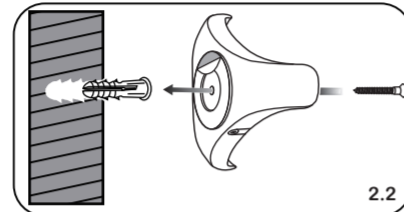
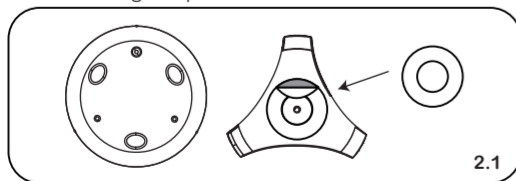
· INSTALLTION ·

Adhesive/Screw Installation

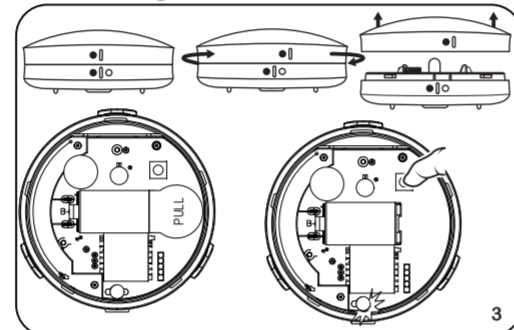
1. Detach the Mounting Bracket
Carefully remove the mounting bracket from the water sensor.



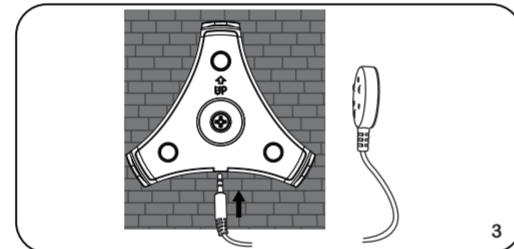
2. Install the Mounting Bracket with Tap or Screws
* Secure the mounting bracket in the desired location using the provided double-sided tape.
* Secure the mounting bracket in the desired location using the provided screws.



3. Activate the Sensor
Remove the tag from the sensor to activate it.



4. Attach the Water Sensor
Firmly attach the water sensor to the mounted bracket. Ensure it is properly aligned and securely fastened.



· Z-WAVE NETWORKING CONFIGURATION ·

Adding Device to Z-Wave Network

1. Follow the instructions provided by your Z-Wave certified hub to add the device in the Z-Wave network.
2. When the hub is ready to add the device, press the manual button once.

To Remove the Device

1. Follow the instructions provided by your Z-Wave certified hub to remove the device from the Z-Wave network.
2. When the hub is ready to remove the device, press the manual button once.

To Return the Device to Factory Defaults

Manual: Remove the battery. Press and hold the manual button while reinserting the battery. Continue holding the manual button for 3 seconds.
Host reset: Remove it from hub, the device will be restore to factory default.

Add QR Code for LR

- The device is compatible with SmartStart. SmartStart enabled products can be added into a Z-Wave network by scanning the Z-Wave QR Code found on the top of the outlet or the back of the box with a controller providing SmartStart inclusion. No further action is required and the SmartStart product will be added automatically within 10 minutes of being switched on and in the network vicinity.
- Note: Z-Wave Long Range device can only support be included via SmartStart. Extract the DSK from end device and paste it into the DSK Value in PC Controller, make sure the Long Range' option is ticked.

LED Indicator

Status	LED Indication
Device Triggered	Red LED ON
Device Normal (Default)	Red LED OFF
Configuration Successful	Green LED flashes 2 times
- Inclusion	Blue LED flashes
- Exclusion	Purple LED flashes
- Operation Failed	Red LED ON for 1 second

Association Group

Group ID	Group Profile Name	Maximum Nodes	Description
1	Lifeline	5	Z-Wave Plus Lifeline, Trigger Report
2	Trigger	5	Supports Basic Set and is controlled by Trigger

Z-Wave Command Class

COMMAND_CLASS_ZWAVEPLUS_INFO	COMMAND_CLASS_POWERLEVEL
COMMAND_CLASS_CONFIGURATION	COMMAND_CLASS_SECURITY2
COMMAND_CLASS_ASSOCIATION	COMMAND_CLASS_SUPERVISION
COMMAND_CLASS_MULTI_CHANNEL_ASSOCIATION	COMMAND_CLASS_FIRMWARE_UPDATE_META_DATA
COMMAND_CLASS_ASSOCIATION_GRP_INFO	COMMAND_CLASS_BATTERY
COMMAND_CLASS_TRANSPORT_SERVICE	COMMAND_CLASS_INDICATOR
COMMAND_CLASS_VERSION	COMMAND_CLASS_NOTIFICATION
COMMAND_CLASS_MANUFACTURER_SPECIFIC	COMMAND_CLASS_WAKE_UP
COMMAND_CLASS_DEVICE_RESET_LOCALLY	

FCC / IC

This device complies with part 15 of the FCC and Industry Canada license-exempt RSS standard(s). Operation is subjected to the following two conditions: (1) This device may not cause harmful interference, (2) This device must accept any interference received, including interference that may cause undesired operation.

FCC NOTE: The manufacturer is not responsible for any radio or TV interference caused by unauthorized modifications to this equipment. Such modifications could void the user's authority to operate the equipment.

- Reorient or relocate the receiving antenna.
- Increase the separation between the equipment and receiver.
- Connect the equipment into an outlet on a circuit different from that to which the receiver is connected.
- Consult the dealer or an experienced radio / TV technician for help.

NOTE: This equipment has been tested and found to comply with the limits for a Class B digital device, pursuant to Part 15 of the FCC Rules. These limits are designed to provide reasonable protection against harmful interference in a residential installation. This equipment generates, uses and can radiate radio frequency energy and, if not installed and used in accordance with the instructions may cause harmful interference to radio communications. However, there is no guarantee that interference will not occur in a particular installation. If this equipment does cause harmful interference to radio or television reception, which can be determined by turning the equipment off and on, the user is encouraged to try to correct the interference by one or more of the following measures:

Important note: To comply with the FCC RF exposure requirements, no change to the antenna or the device is permitted. Any change to the antenna or the device could result in the device exceeding the RF exposure requirements and void user's authority to operate the device.

CAUTION - PLEASE READ!

This device is intended for installation in accordance with the National Electric Code and local regulations in the United States, or the Canadian Electrical Code and local regulations in Canada. If you are unsure or uncomfortable about performing this installation consult a qualified electrician.

WARNING

RISK OF FIRE / RISK OF ELECTRICAL SHOCK / RISK OF BURNS

TO REDUCE THE RISK OF ELECTRIC SHOCK, THIS PRODUCT HAS A GROUNDING TYPE PLUG THAT HAS A THIRD (GROUNDING) PIN. THIS PLUG WILL ONLY FIT INTO A GROUNDING TYPE POWER OUTLET. IF THE PLUG DOES NOT FIT INTO THE OUTLET, CONTACT A QUALIFIED ELECTRICIAN TO INSTALL THE PROPER OUTLET. DO NOT CHANGE THE PLUG IN ANY WAY. CONTROLLING APPLIANCES:

CAUTION: TO REDUCE THE RISK OF OVERHEATING AND POSSIBLE DAMAGE TO OTHER EQUIPMENT

- DO NOT EXCEED RATINGS
- DO NOT USE TO CONTROL ANY DEVICE WHERE UNINTENDED OPERATION COULD CAUSE UNSAFE CONDITIONS (HEAT LAMP, SUN LAMP, ETC.)

MEDICAL EQUIPMENT

Please DO NOT use this switch to control Medical or Life Support equipment. Z-Wave devices should never be used to control the On / Off status of Medical and / or Life Support equipment.

CONTROLLING APPLIANCES

Please exercise EXTREME CAUTION when using Z-Wave devices to control appliances. Reason being is because the appliance you want to control may be in a separate room and if unintentional behavior occurs (such as a device turning on or off—either intentionally via schedules, or unintentionally via network error) this event may lead to a hazardous condition. For these reasons, please note the following suggestions:

- 1) Do not include Z-Wave devices in Groups or Scenes if they control appliances.
- 2) Do not use Z-Wave devices to control electric heaters or any other appliances which may present a hazardous condition due to unattended, unintentional, or automatic power control.

This equipment complies with FCC radiation exposure limits set forth for an uncontrolled environment. This equipment should be installed and operated with minimum distance 20cm between the radiator & your body.