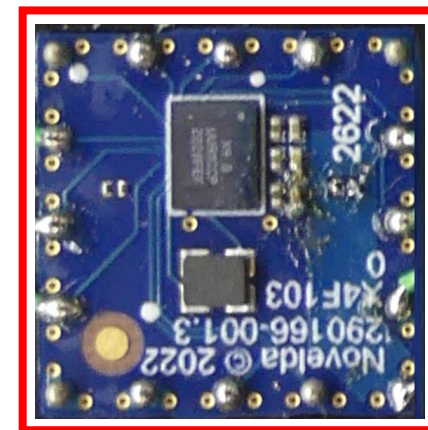


The actual module is soldered to a board with connector to control operation via the test jig

This is the actual X4F103 module

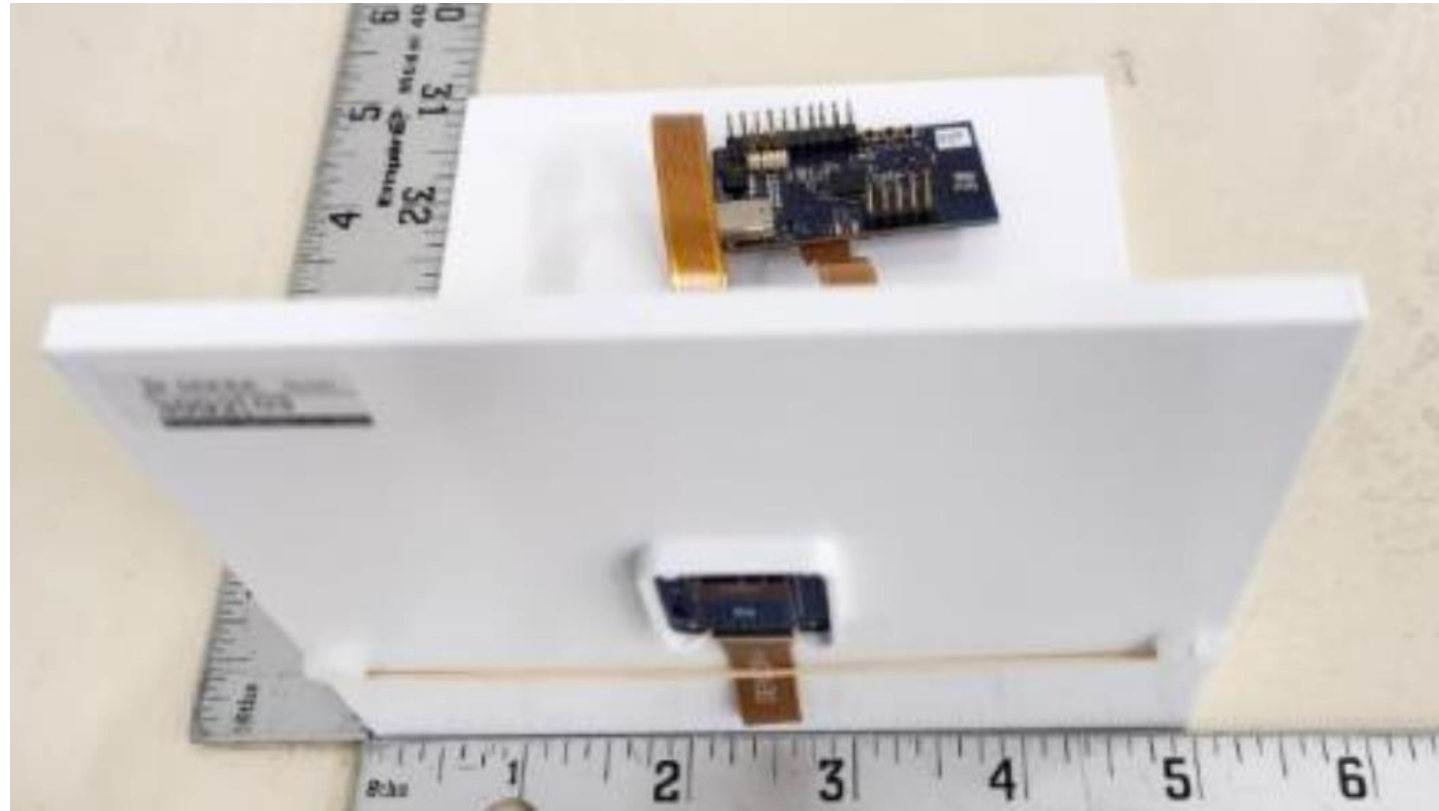
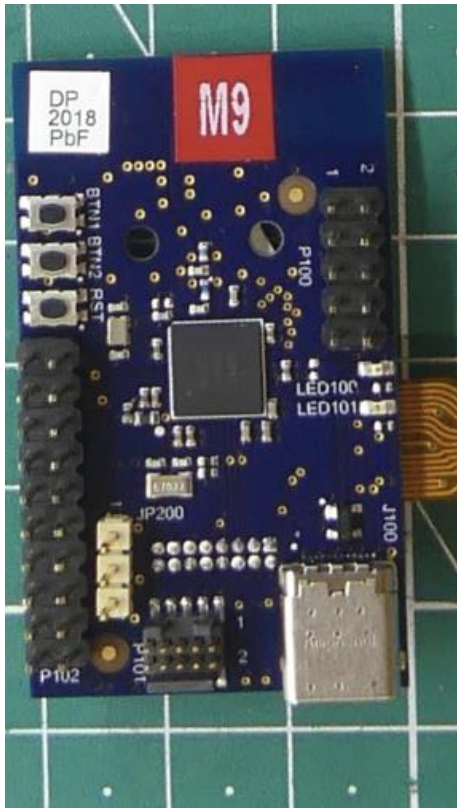
Back side



Left:

This is the test jig which connects to the board of the previous slide via the ribbon cable.
The USB C port is at the bottom right corner.

Right: Setup used for testing



This setup is from a different testing (Electrical Safety).

This image is for explanation and clarification purposes.

The module was not directly soldered to the PCB with the ribbon connector but rather “soldered” using wires.

This way the operation via the test jig was posible and the Electrical Safety testing could be carried out to the module itself.

