

EXHIBIT 12: EXTERNAL PHOTOGRAPHS

SECTION 2.1033 (c) (12)

Photographs (8"x10") of the equipment of sufficient clarity to reveal equipment construction and layout, including meters, if any, and labels for controls and meters and sufficient views of the internal construction to define component placement and chassis assembly. Insofar as these requirements are met by photographs or drawings contained in the instruction manuals supplied with the product certification request, additional photographs are necessary only to complete the required showing.

Response:

The external photographs of the **Nokia FA3WA01AirScale 5G 39GHz mmWave Radio**, FCC ID: 2AD8UFA3WA01 are below.

Exhibit 12 – External Photographs *continued*

Nokia AirScale FA3WA 39 GHz Radio Unit, FCC ID: 2AD8UFA3WA01

Front View FA3WA (Extension Module))



Back View (Extension Module)

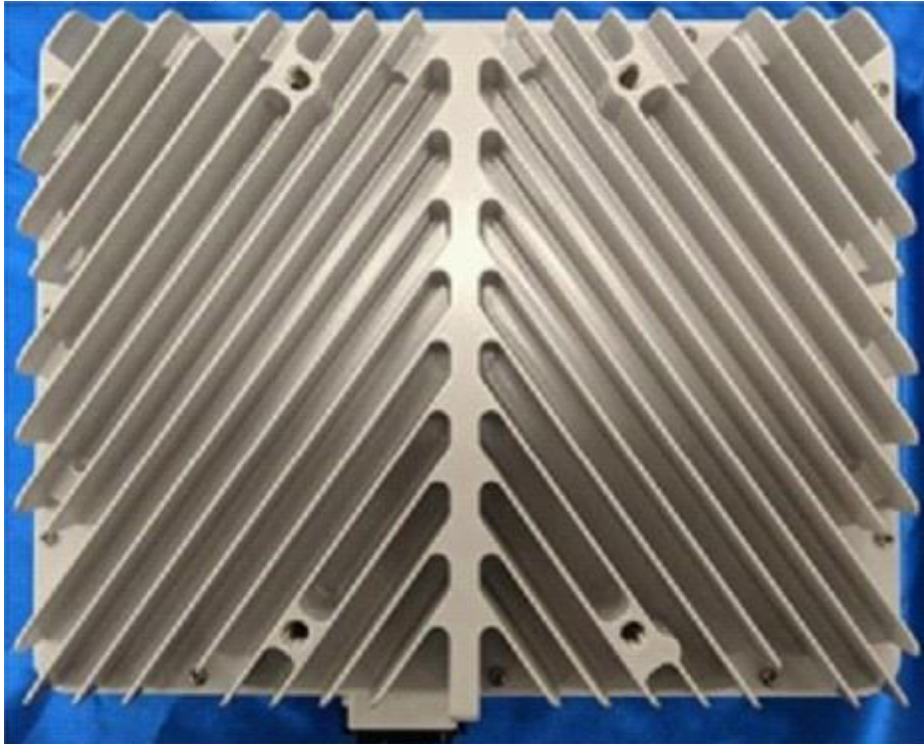


Exhibit 12 – External Photographs *continued*

Right Side FA3WA ((xtension Module)



Left Side FA3WA (Extension Module)



Exhibit 12 – External Photographs *continued*

Top View FA3WA (Extension Module)



Bottom Views FA3WA (Extension Module)

