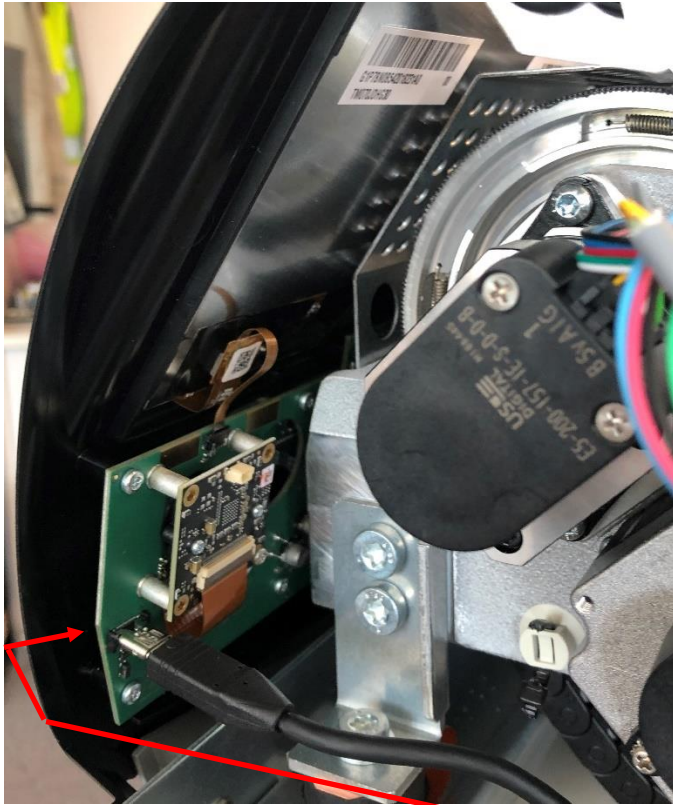


# CEREC Primemill

This document shows the position of the electronic boards inside the CEREC Primemill by pictures. The information of the main dimensions of the electronics related to the RFID functionality are given in the picture description.



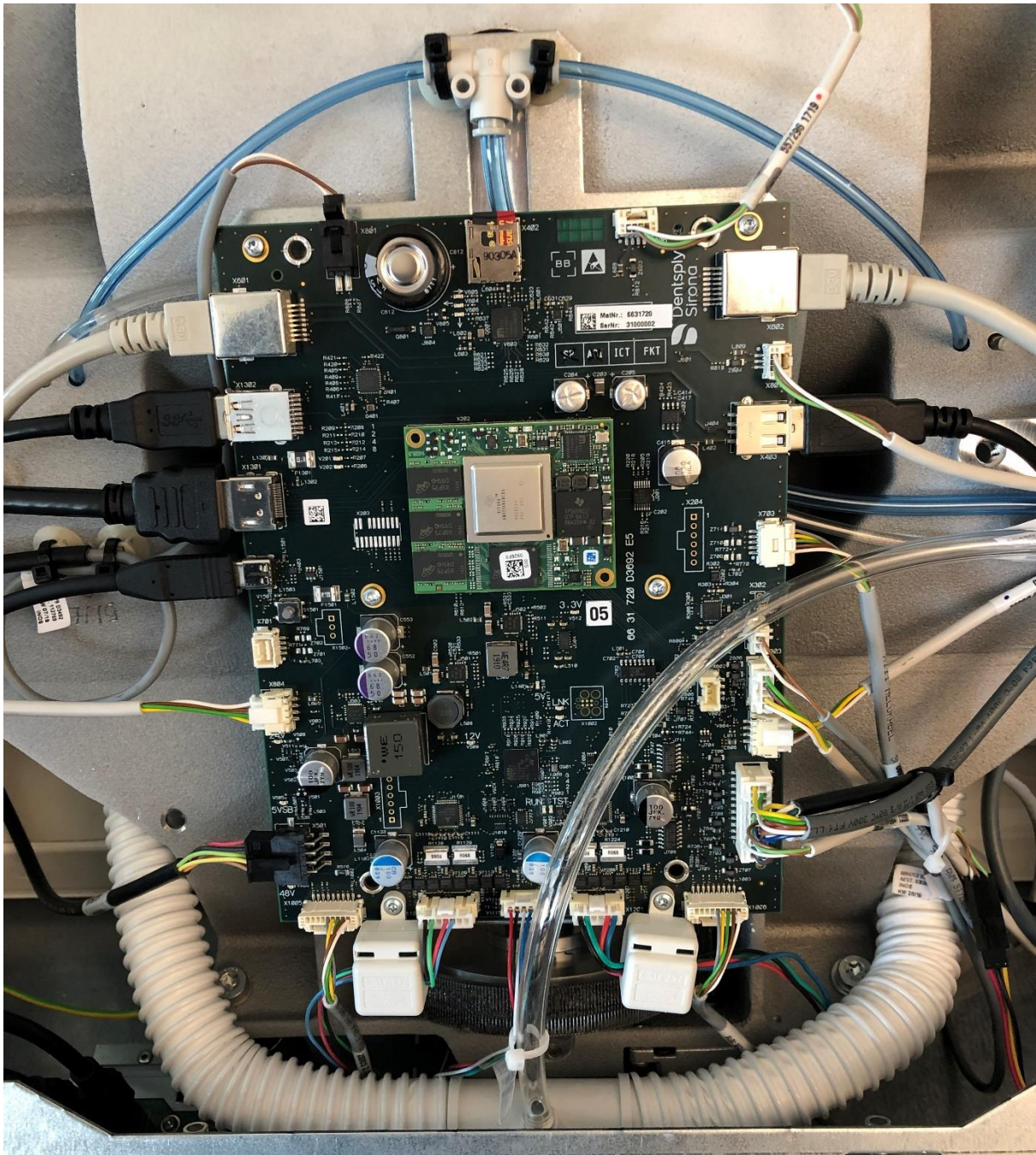
Pict. 1: Backside of User Interface with RFID Transponder



Pict. 2: RFID Transponder, component side, outer dimension 130mm x 26mm

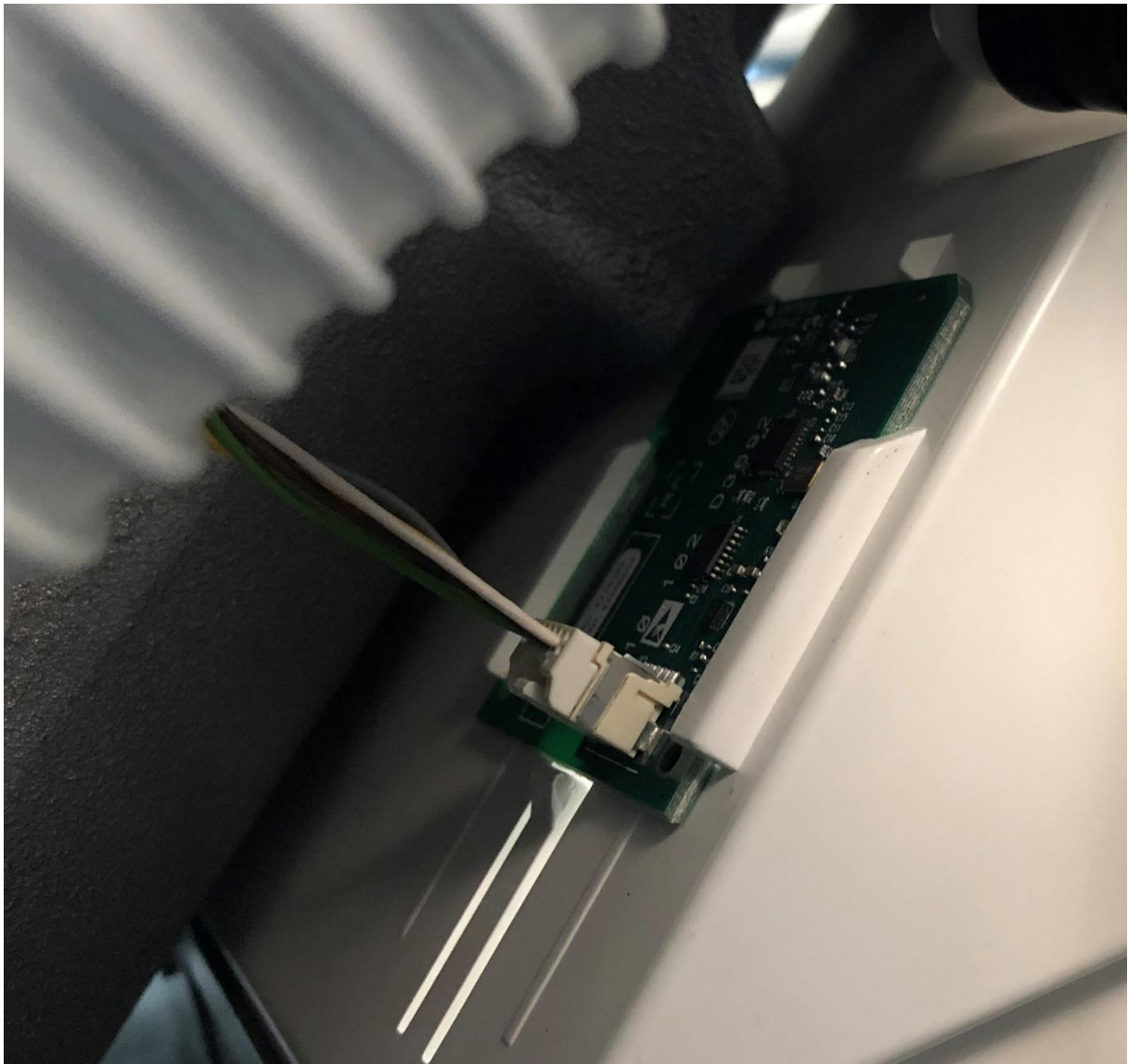


Pict. 3: RFID Transponder, backside

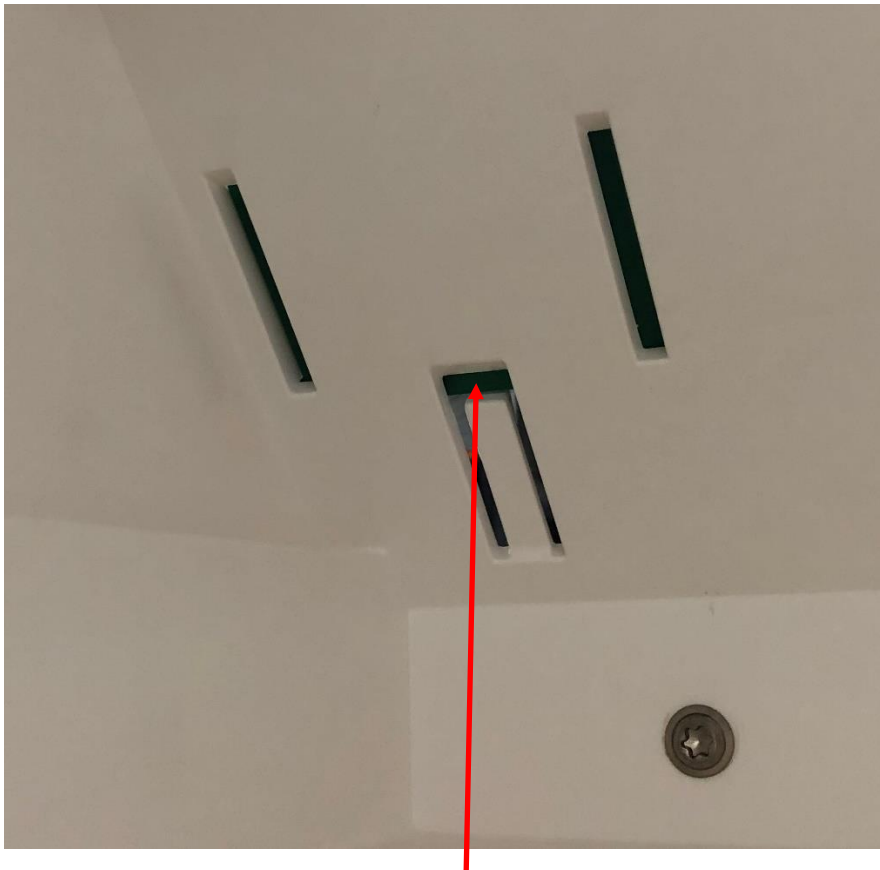


Pict. 5: Basic Board (no RFID related function)

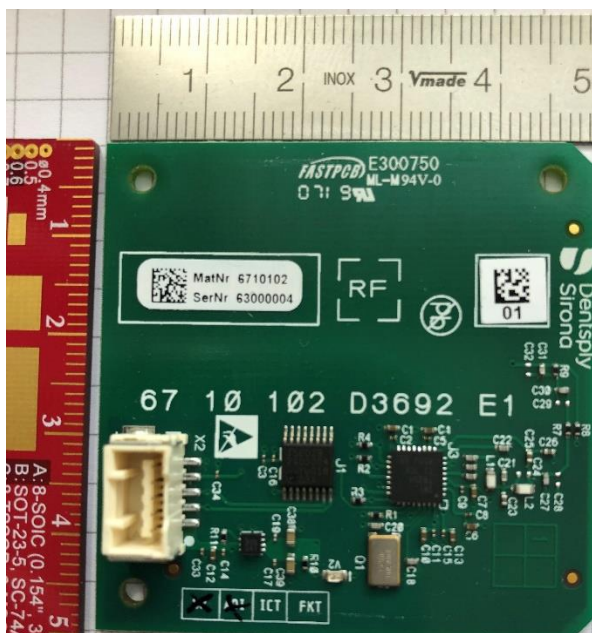




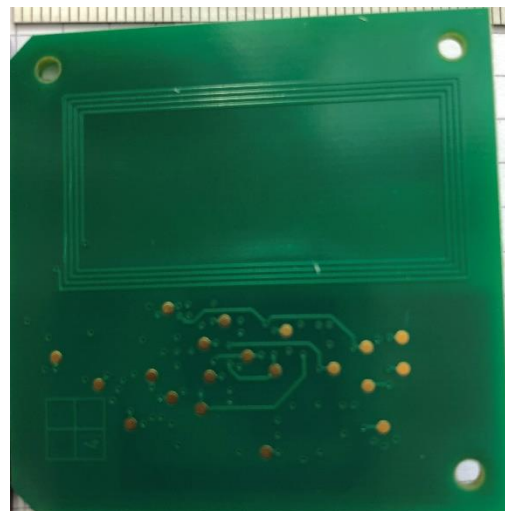
Pict. 6: RFID Tank Detection, mounted on plastic housing. The tank is placed on the other side of the housing.



Pict. 7: RFID Tank Detection, mounted behind plastic housing. This is a view from the tank side.



Pict. 8: RFID Tank Detection, component side, outer dimension 49mm x 49mm



Pict. 9: RFID Tank Detection, backside