



LABEL PLACEMENT FOR INFRASTRUCTURE UNITS INF-B270-C, INF-B280-C AND INF-B285-C

Version v1.0

Date November 27, 2015

Author Hanna Luukkonen

LABEL PLACEMENT FOR INFRASTRUCTURE UNITS INF-B270-C, INF-B280-C AND INF-B285-C

LIST OF REVISIONS

Version	Status / Change description	Date	Sign.
V1.0	Initial version	2015-11-27	HL

TABLE OF CONTENTS

1	GENERAL	4
2	PLACEMENT OF LABELS.....	5

LABEL PLACEMENT FOR INFRASTRUCTURE UNITS INF-B270-C, INF-B280-C AND **INF-B285-C**

1 GENERAL

This document illustrates the placement of labels for products INF-B270-C, INF-B280-C and INF-B285-C. INF-B270-C.

LABEL PLACEMENT FOR INFRASTRUCTURE UNITS INF-B270-C, INF-B280-C AND INF-B285-C

2 PLACEMENT OF LABELS

The labels associated to the product variant in question are always placed identically on the product.

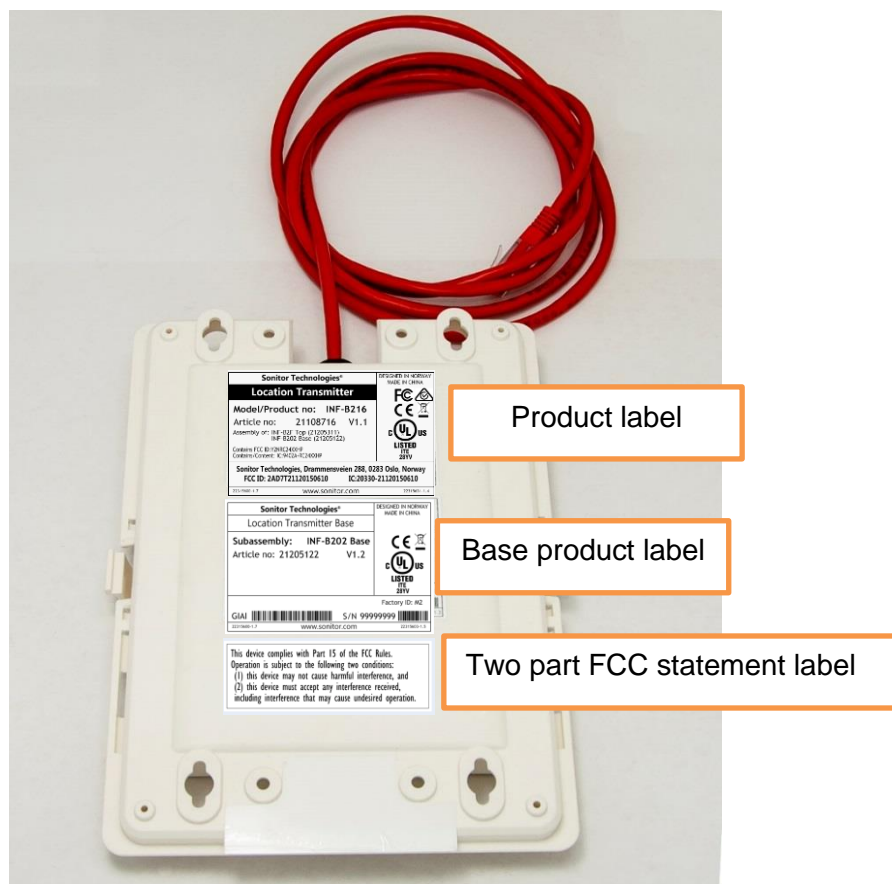


Figure 1 Placement of labels located on the back side of the product

LABEL PLACEMENT FOR INFRASTRUCTURE UNITS INF-B270-C, INF-B280-C AND **INF-B285-C**

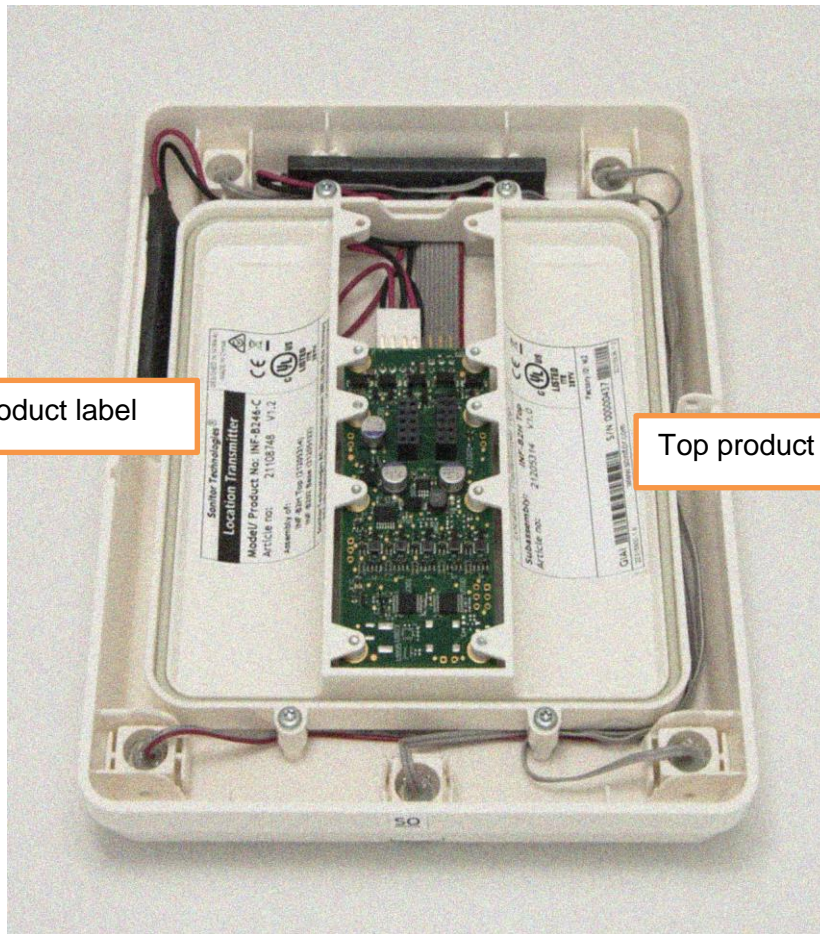


Figure 2 Placement of labels located in the top subassembly