

SERVER ASSEMBLY BOM			
ITEM	PART NO.	DESCRIPTION	QTY
1	2101010	ENCLOSURE BODY	1
2	2101020	ENCLOSURE COVER	1
3	2102010	VDS PCB	1
4	2101030	FRONT PLATE	1
5	2101040	REAR PLATE	1
6	2103010	WI-FI ANTENNA	1
7	2103020	CAMERA CONNECTOR	6
8	4083570	SCREW, M3.5 X 0.6, 8MM, TAMPER-PROOF, THRD FORM	8
9	2104020	THERMAL FOAM, PROCESSOR	1
10	2104030	THERMAL FOAM, DECODER	1
11	2104010	FOAM STRIP W/ ADHESIVE	4
12	4099010	MASTER LABEL, VDS	1
13	4099020	ID LABEL, VDS	0

NOTES:

1) ALL DIMENSIONS INCHES [MM], FOR REFERENCE ONLY

2) ANTENNA MUST BE ORIENTED SUCH THAT IT CAN ROTATE TO A HORIZONTAL POSITION IN BOTH DIRECTIONS (SEE SHEET 2)

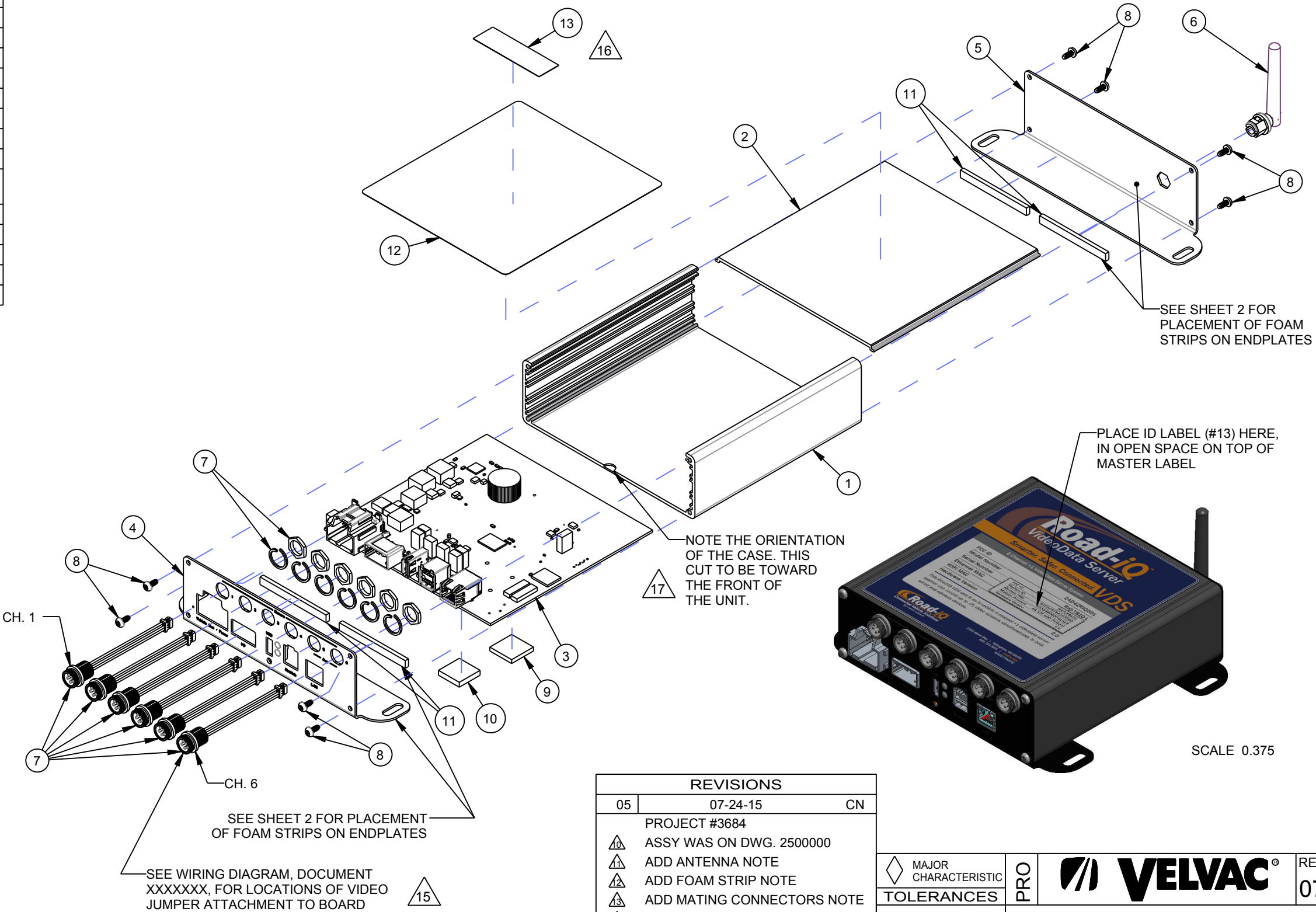
3) FOAM STRIPS SHALL NOT PROJECT INTO FACEPLATE OPENINGS BEFORE ASSEMBLY

4) FUNCTIONAL INSERTION OF MATING CONNECTORS (OR EQUIVALENT) REQUIRED AFTER ASSEMBLY:
- MOLEX 31408-1160 (VEHICLE BUS/POWER)
- MOLEX 34824-0124 (I/O)
- APPLE LIGHTNING TO USB CABLE (USB)
- FCI 74233-102LF, 12V POWEREDUSB (NETHUB)
- RJ45 (LAN)

5) FUNCTIONAL TEST PER VELVAC SPECIFICATION #XXXXXXX REQUIRED AFTER ASSEMBLY



6) PACKAGE INDIVIDUALLY IN ESD BAG W/ DESSICANT.PACKAGE BAGGED SERVERS IN BULK CARTON.

7) CARTON TO BE LABELED PER VELVAC SPECIFICATION#EIP00001.

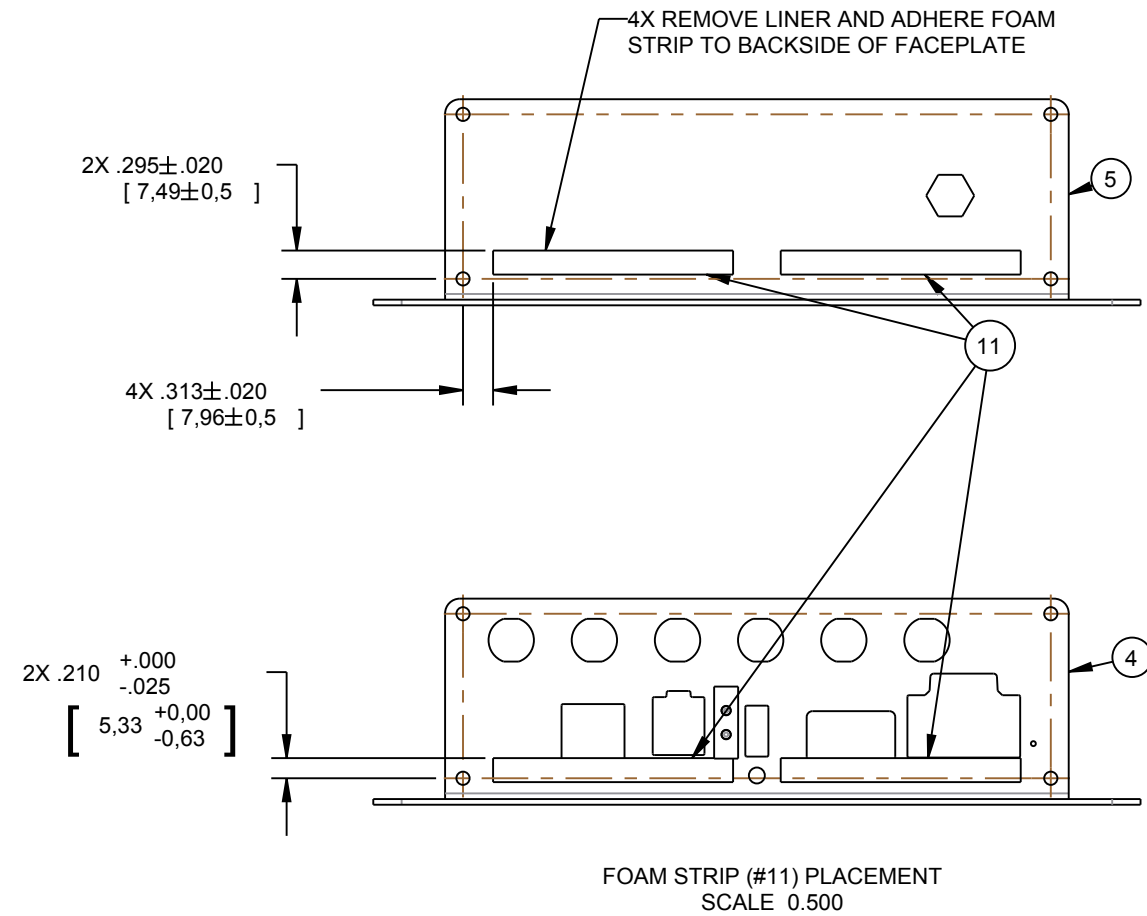
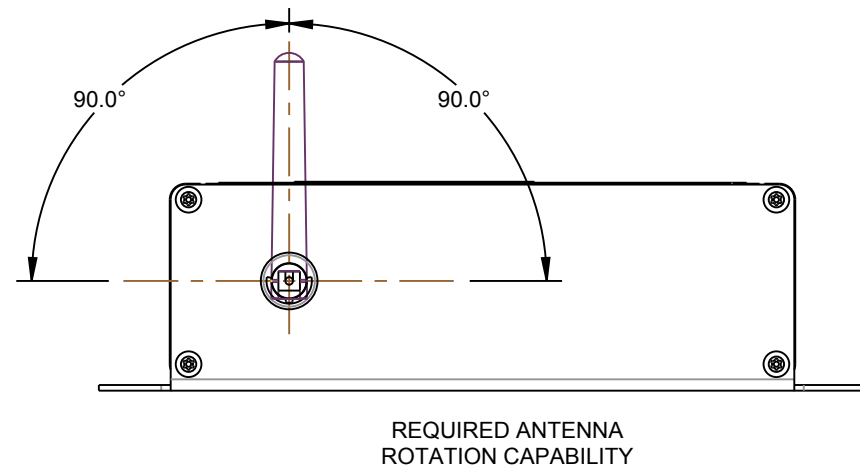
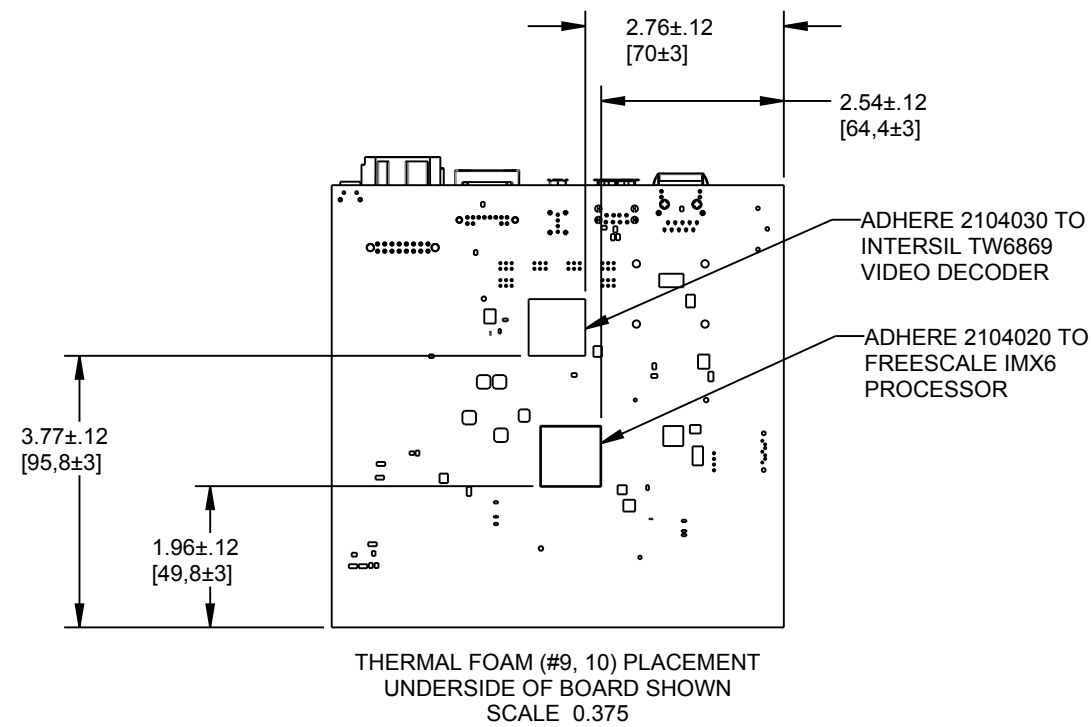


FUNCTIONAL REVISIONS:
ALL REVISIONS WITH SOLID TRIANGLE ARE USABLE

REVISIONS		
05	07-24-15	CN
PROJECT #3684		
△	ASSY WAS ON DWG. 2500000	
△	ADD ANTENNA NOTE	
△	ADD FOAM STRIP NOTE	
△	ADD MATING CONNECTORS NOTE	
△	ADD FUNCTIONAL TEST NOTE	
△	ADD WIRING DIAGRAM NOTE	
△	SHOW 4099020	
06	07-28-15	CN
PROJECT #3684		
△	SHOW & NOTE CUT ON CASE	
▲ 07	08-05-15	CN

 MAJOR CHARACTERISTIC	PRO	 VELVAC®	REV		
			07		
TOLERANCES		ROAD-IQ VIDEODATA SERVER ASSY.			
2 DECIMAL $\pm .01$ 3 DECIMAL $\pm .005$ ANGULAR $\pm 1^\circ$ UNLESS OTHERWISE SPECIFIED					
PROPRIETARY					
THIS CONCEPT & DRAWING IS THE PROPERTY OF VELVAC INC. AND SHALL NOT BE REPRODUCED, COPIED, DISCLOSED OR USED FOR THE MANUFACTURE OR PROCUREMENT FROM SOURCES OTHER THAN VELVAC INC., WITHOUT WRITTEN PERMISSION FROM VELVAC, INC.			DRAWN BY: CN	DRAWING NO *2500001	
			DATE: 03-26-15		
		SCALE: 0.333			
SHEET 1 OF 2					

*2500001



<div><div></div><div>MAJOR CHARACTERISTIC</div></div>		PRO	<div><div></div><div>VELVAC®</div></div>	REV 07
TOLERANCES		ROAD-IQ VIDEODATA SERVER ASSY.		
2 DECIMAL ±.01 3 DECIMAL ±.005 ANGULAR ±1° UNLESS OTHERWISE SPECIFIED				
REVISIONS		PROPRIETARY		
SEE SHEET 1				
		DRAWN BY: CN		DRAWING NO *25000001
		DATE: 03-26-15		
		SCALE: 0.500		
		SHEET 2 OF 2		
		THIS CONCEPT & DRAWING IS THE PROPERTY OF VELVAC INC. AND SHALL NOT BE REPRODUCED, COPIED, DISCLOSED OR USED FOR THE MANUFACTURE OR PROCUREMENT FROM SOURCES OTHER THAN VELVAC INC., WITHOUT WRITTEN PERMISSION FROM VELVAC, INC.		