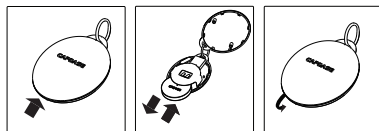


## REPLACING BATTERY

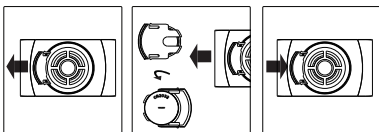
### Smart Alert Key



1. Open the battery cover on the Smart Alert Key
2. Take out the old battery and insert a new one
3. Close the battery cover

Caution: Be sure the plus (+) side of the battery faces up  
Use only a CR2450 button cell battery

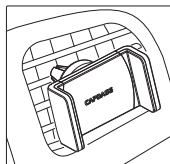
### Smart Car Mount



1. Open the battery cover on the Smart Car Mount
2. Take out the old battery and insert a new one
3. Put the battery cover back

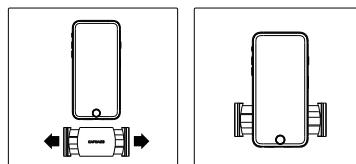
Caution: Be sure the minus (-) side of the battery faces up  
Use only a CR2032 button cell battery

## INSTALLATION



1. Apply the clips to hook onto the air vent grilles
2. Make sure the clip is hooked stably

## USING THE PHONE HOLDER



1. Adjust holder by pulling both sides
2. Put your phone into the Smart Car Mount

For general enquiry: [info@capdase.com](mailto:info@capdase.com)  
[www.capdase.com](http://www.capdase.com)

Made in P.R.C.

Warning: Changes or modifications to this unit not expressly approved by the party responsible for compliance could void the user's authority to operate the equipment.

NOTE: This equipment has been tested and found to comply with the limits for a Class B digital device, pursuant to Part 15 of the FCC Rules. These limits are designed to provide reasonable protection against harmful interference in a residential installation. This equipment generates, uses and can radiate radio frequency energy and, if not installed and used in accordance with the instructions, may cause harmful interference to radio communications. However, there is no guarantee that interference will not occur in a particular installation. If this equipment does cause harmful interference to radio or television reception, which can be determined by turning the equipment off and on, the user is encouraged to try to correct the interference by one or more of the following measures:

Reorient or relocate the receiving antenna.

Increase the separation between the equipment and receiver.

Connect the equipment into an outlet on a circuit different from that to which the receiver is connected.

Consult the dealer or an experienced radio/TV technician for help.

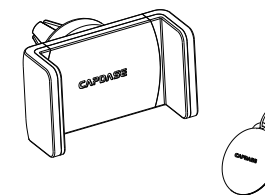
This device complies with Part 15 of the FCC Rules. Operation is subject to the following two conditions: (1) the device may not cause harmful interference, and (2) the device must accept any interference received, including interference that may cause undesired operation.

"CAUTION RISK OF EXPLOSION IF BATTERY IS  
REPLACED BY AN INCORRECT TYPE.  
DISPOSE OF USED BATTERIES ACCORDING  
TO THE INSTRUCTIONS"

This device complies with FCC radiation exposure limits set forth for general population (uncontrolled exposure). This device must not be collocated or operating in conjunction with any other antenna or transmitter.

## POSH Smart Car Mount with Alert Key

### User Manual



CAPDASE

YIN-00230

## CONTENTS

- POSH Smart Alert Key
- POSH Smart Car Mount (Air Vent)

## PRODUCT FEATURES

Posh Smart Car Alert Key alerts you when you left your mobile phone on the Smart Car Mount. It will sound an alarm where your mobile phone is out of range from the Alert Key.

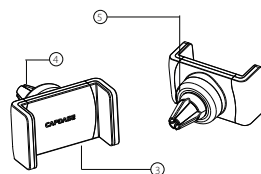
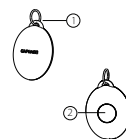
## SPECIFICATIONS

- POSH Smart Key Chain
- Net Weight: 20 g
  - Battery Type: CR2450
  - Operating Frequency: 433.92 MHz

- POSH Smart Car Mount
- Net Weight: 50 g
  - Battery Type: CR2032
  - Operating Frequency: 433.92 MHz

## PRODUCT OVERVIEW

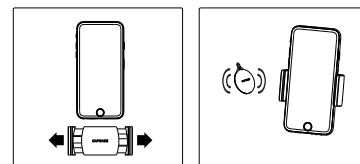
- ① Key Chain
- ② Button
- ③ Smart Phone Holder
- ④ Air Vent Clip
- ⑤ Battery Compartment



## INITIAL PAIRING

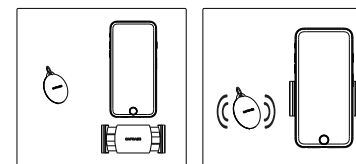


1. Take out the plastic insulation sheet from the unit
2. Press and hold the button on the Alert Key for 3 seconds. A long beep will sound
3. Place the Alert Key within 1 meter of the Smart Car Mount during initial pairing.

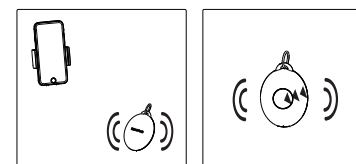


4. Put your phone into the Smart Phone Holder
5. A few short beeps will sound to indicate the Alert Key and the Smart Car Mount have been paired successfully.

## USING THE SMART CAR MOUNT & ALERT KEY



1. Carry the Smart Alert Key with you
2. Put your mobile phone into the Smart Phone Holder
3. A beep will sound to indicate the Smart Alert Key and Smart Car Mount have been paired successfully.



4. When the mobile phone is out of range from the Smart Alert Key, the Smart Alert Key will sound an alarm continuously to alert you.
5. Press the button on the Alert Key or take the phone off the Smart Car Mount to stop the alarm.

Note: Repeat steps 2 to 5 to reset the connection, e.g. after replacing the battery.