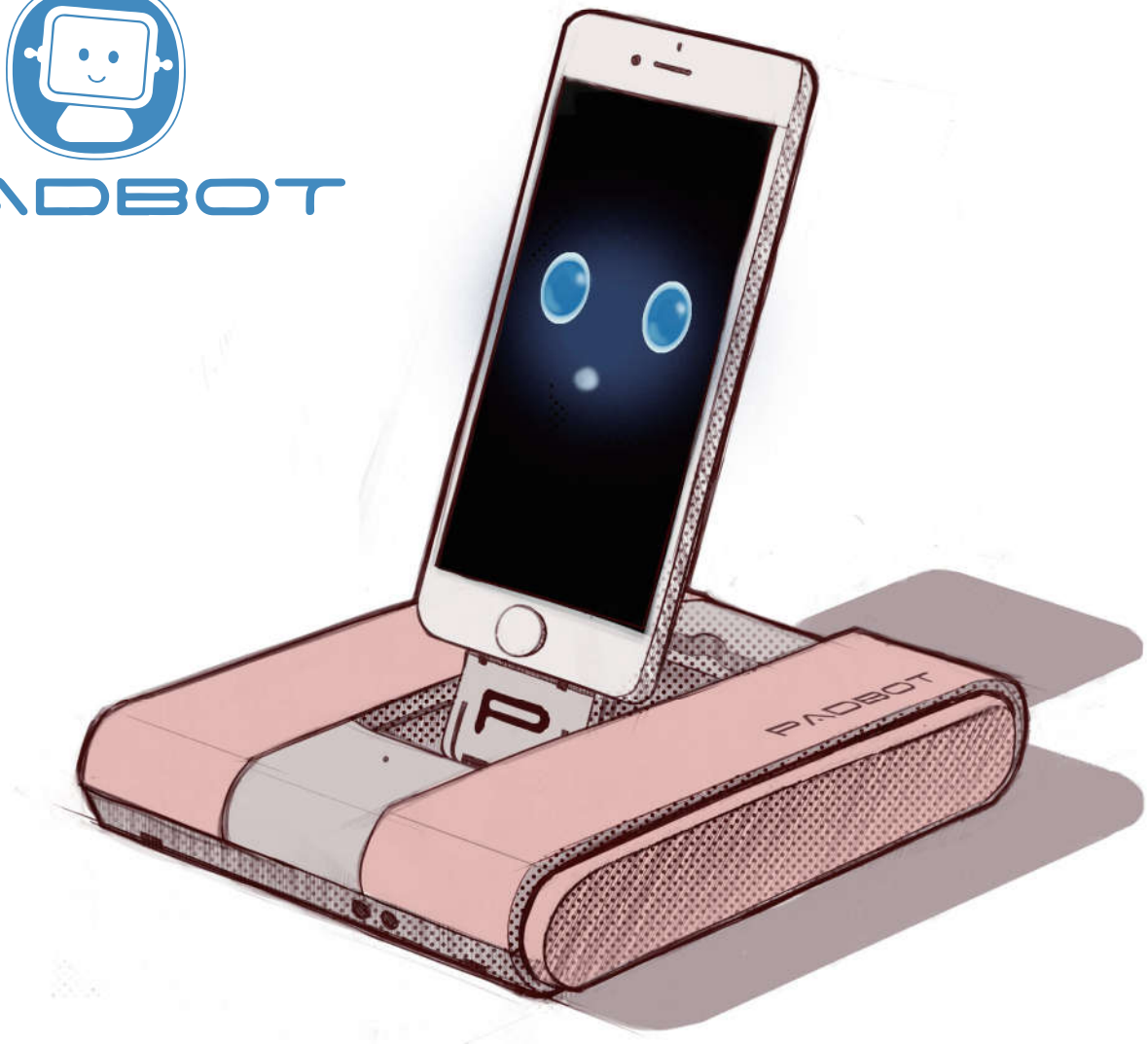




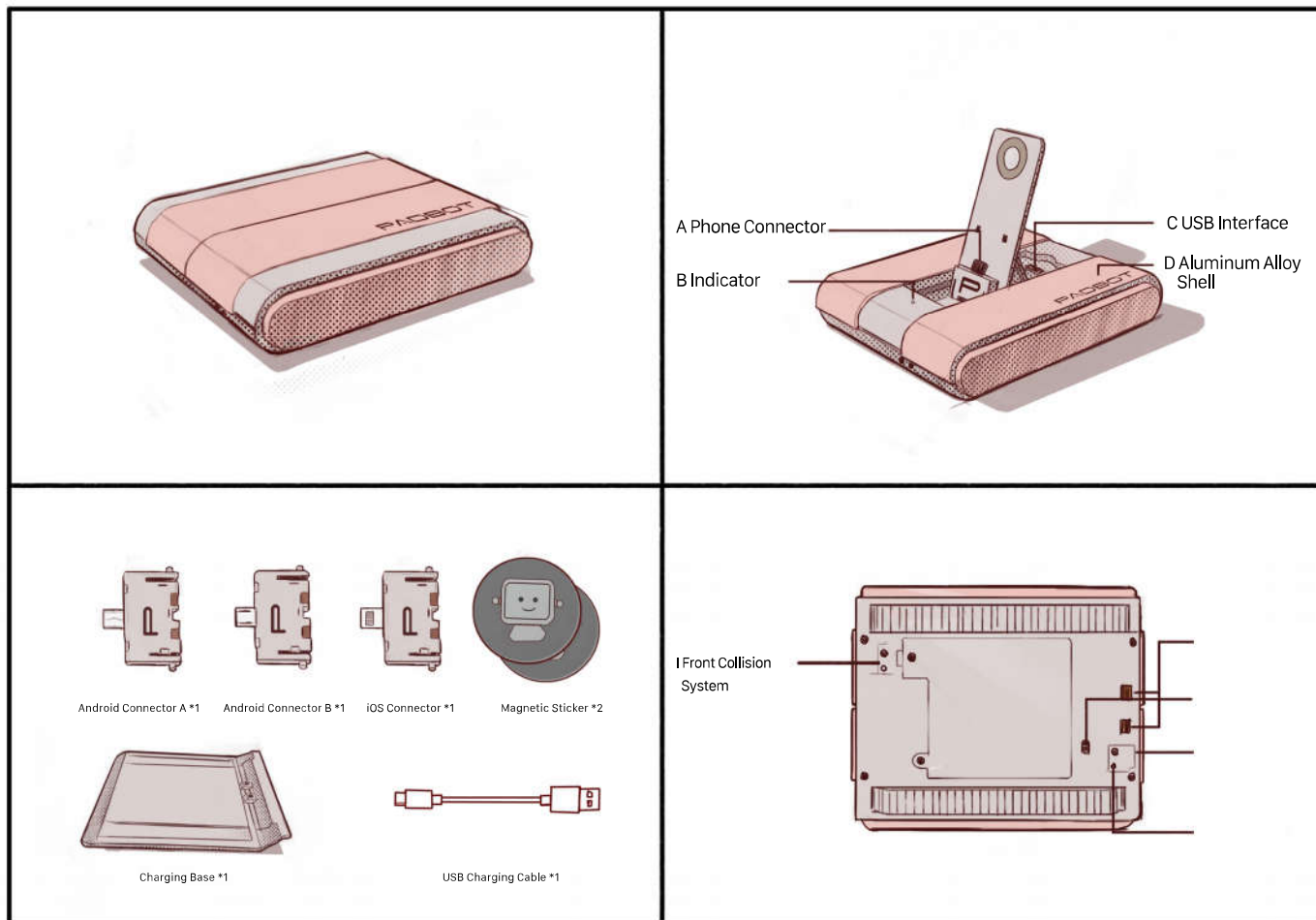
PADBOT



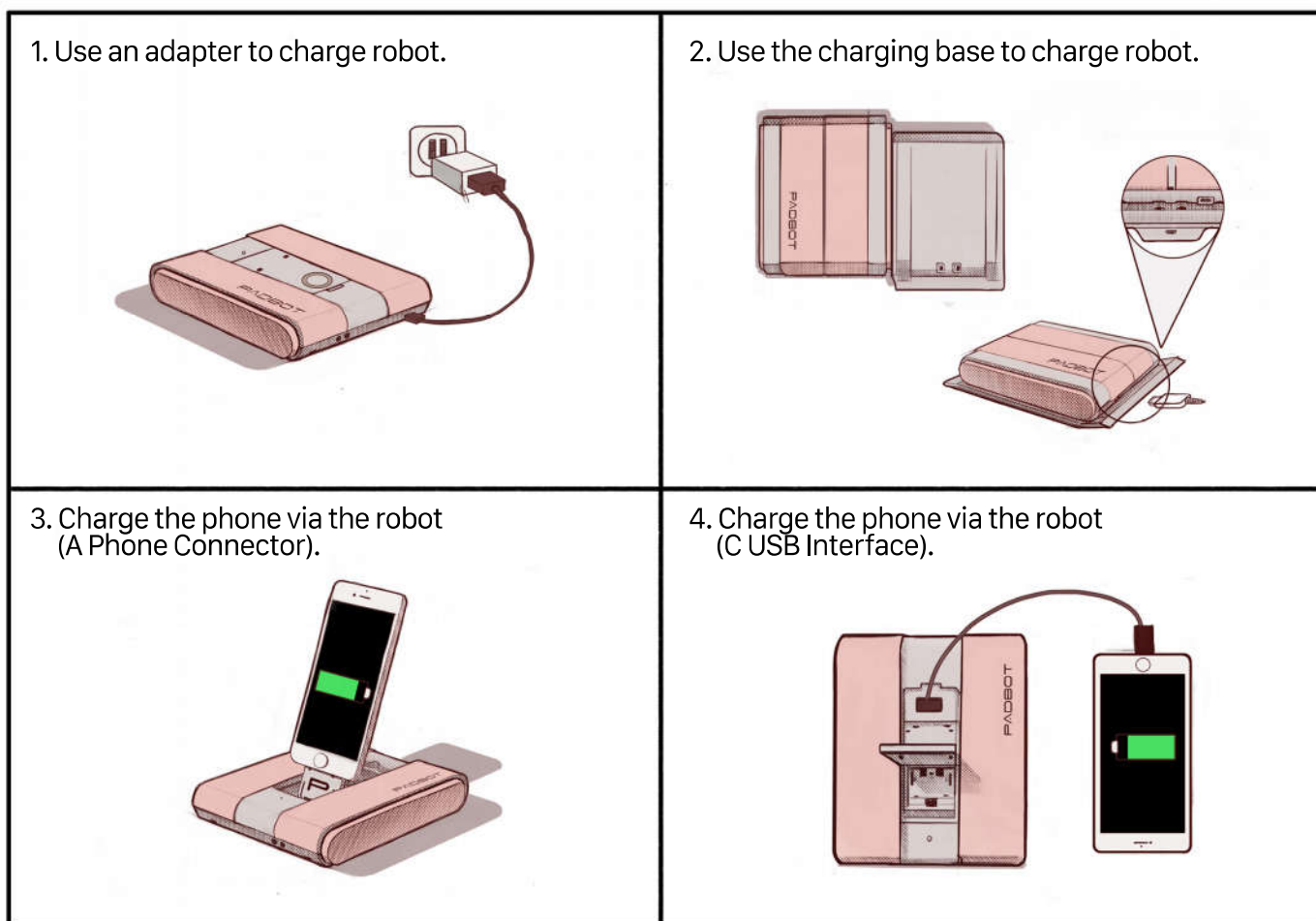
PadBot T1 User Guide

www.padbot.com

1 Overview

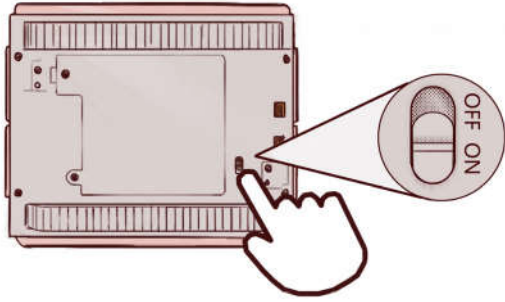


2 Battery Charging

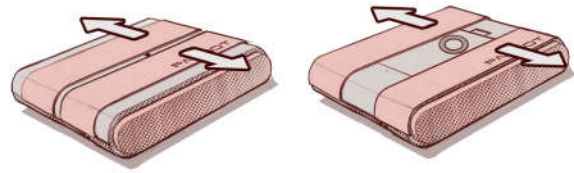


3 Instructions 01 for PadBot T1

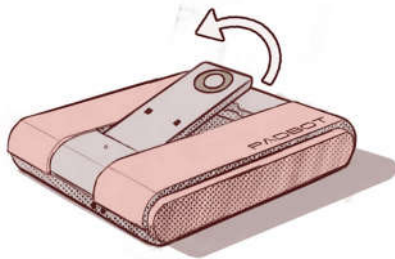
1. Switch the ON-OFF to "ON".



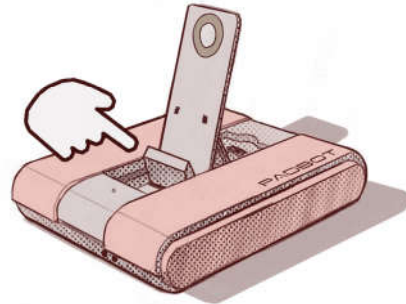
2. Open the aluminum alloy shell.



3. Erect the phone bracket.

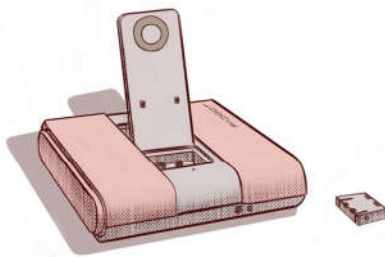


4. Erect the phone connector.

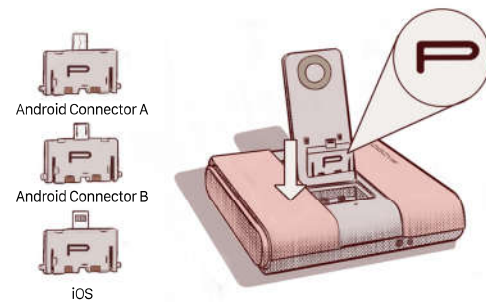


4 Instructions 02 for PadBot T1

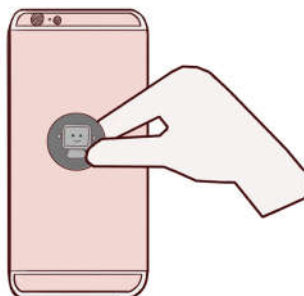
5. Take down the default phone connector.



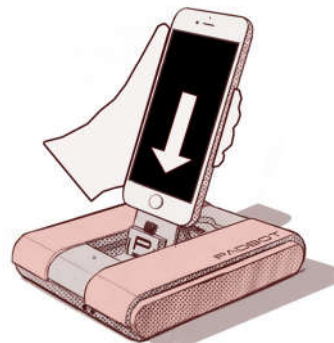
6. Change a suitable phone connector.



7. Stick the magnetic sticker on the back of the phone.



8. Plug the phone in the phone connector of robot.



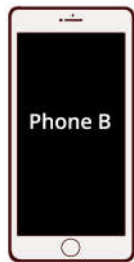
5 Using PadBot Apps (for example, we have two mobile phones, Phone A and Phone B)

1. Install PadBot Apps:

(Phone A and Phone B) Download the "PadBot" in Phone A and Phone B.



Plan to plug in robot



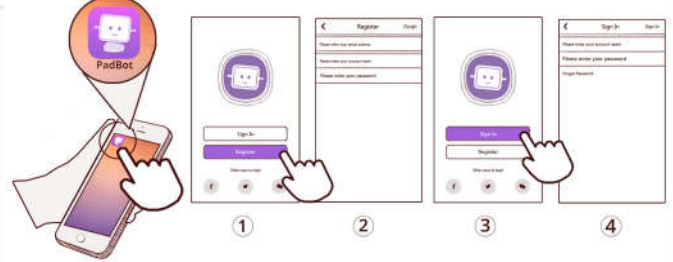
Plan to make video chat



Scan different QR Code based on your phone's OS.

2. Register account:

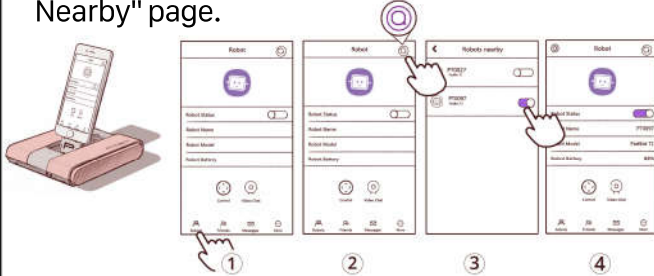
(Phone A and Phone B) Open PadBot Apps, registered users enter the account and password, and then click the "Sign In" button to login your account.



(Phone A and Phone B)

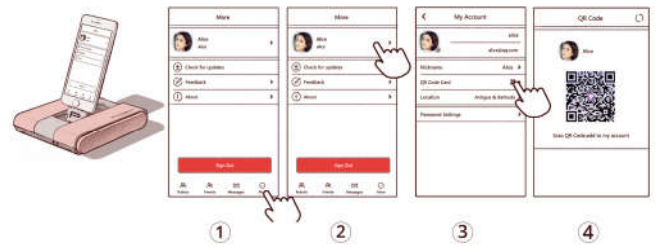
3. Connect robot:

(Phone A) From the "Robots" menu, click the "Search" icon upper right corner, and then select and connect the robot in the "Robot Nearby" page.



4. Open the QR Code:

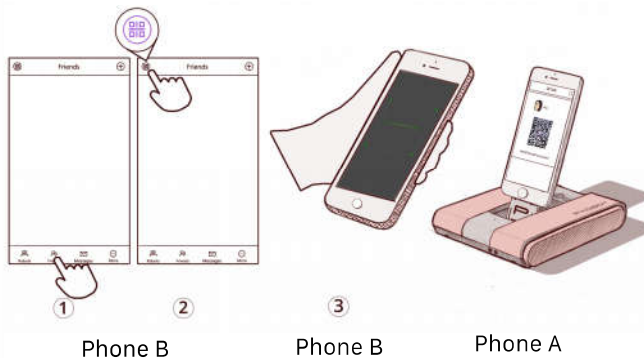
(Phone A) From the "More" menu, click the avatar icon, and then click "QR Code Card" to show the QR Code.



6 Video Chat

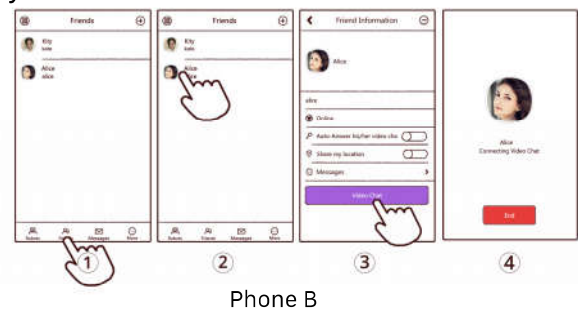
5. Add friend - Scanning QR Code to add friend:

(Phone B) From the "Friend" menu, click the "QR Code Scan" icon to scan the QR Code of Phone A.



6. Building a video chat with your friend:

(Phone B) From the "Friend" menu, you can click one friend's avatar icon, and then click the "Video Chat" button to build a video chat with your friend.



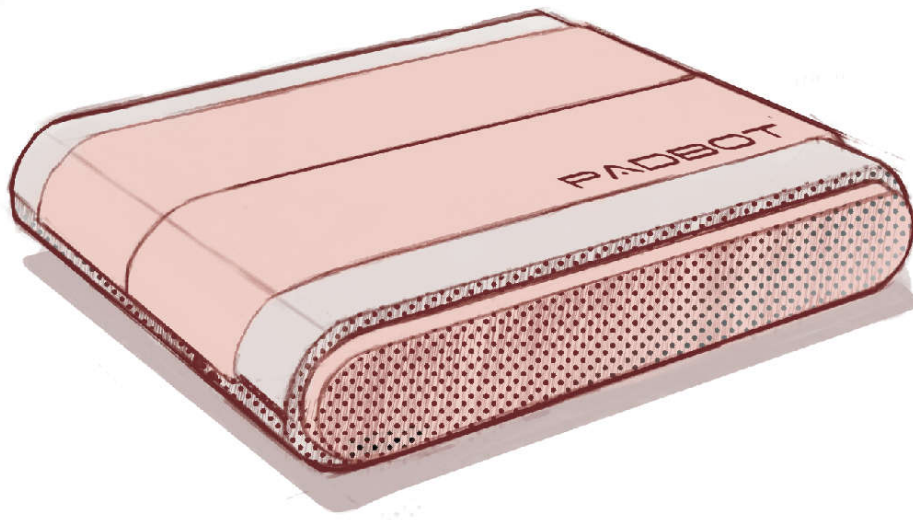
7. (Phone A) You can accept or refuse the friend video chat.



8. Control the robot:

(Phone B) Control the robot to move forward, backward, turn left, turn right.





Technical Specifications

Height: 36mm
Width: 131mm
Length: 162mm
Battery Capacity: 7.4V/1800mAh
Rated Energy: 13.3Wh
Charging Input: 5V/1.5A
Charge Time: 5 Hours
Extreme Using Time: 2 Hours
Regular Using Time: 12 Hours
Standby Time: 100 Hours

Use and Handling

1. Do not place robot in humidity, dusty, smoggy or vapor environment.
2. Do not place robot in the water, and you can clean it with a damp cloth and mild detergent.
3. Do not disassemble the robot.
4. Do not throw or drop robot, and don't cause violent shaking or shock to robot.
5. Please note that use wrong type battery will cause an explosion risk, be sure to follow the instruction to dispose of used batteries.

Federal Communications Commission (FCC) Statement

This device complies with part 15 of the FCC Rules. Operation is subject to the following two conditions: (1) This device may not cause harmful interference, and (2) this device must accept any interference received, including interference that may cause undesired operation.

Note: This equipment has been tested and found to comply with the limits for a Class B digital device, pursuant to part 15 of the FCC Rules. These limits are designed to provide reasonable protection against harmful interference in a residential installation. This equipment generates, uses and can radiate radio frequency energy and, if not installed and used in accordance with the instructions, may cause harmful interference to radio communications. However, there is no guarantee that interference will not occur in a particular installation. If this equipment does cause harmful interference to radio or television reception, which can be determined by turning the equipment off and on, the user is encouraged to try to correct the interference by one or more of the following measures:

- Reorient or relocate the receiving antenna.
- Increase the separation between the equipment and receiver.
- Connect the equipment into an outlet on a circuit different from that to which the receiver is connected.
- Consult the dealer or an experienced radio/TV technician for help.

Warning: Changes or modifications made to this device not expressly approved by Guangzhou Inbot Technology Ltd. may void the FCC authorization to operate this device. The distance between user and products should be no less than 20cm

Note: The manufacturer is not responsible for any radio or TV interference caused by unauthorized modifications to this equipment. Such modifications could void the user's authority to operate the equipment.

PadBot T1 - Your Smart Desktop Robot



iPhone iOS



Android Phone

Inbot Technology Ltd.

Address: Room 1221-1222, Huagang Commercial Building, no.140,
West Zhongshan Ave, Tianhe-District, Guangzhou, China

E-mail: padbot@inbot.cn

Website: www.padbot.com

Hotline: (+8620)3845-6676