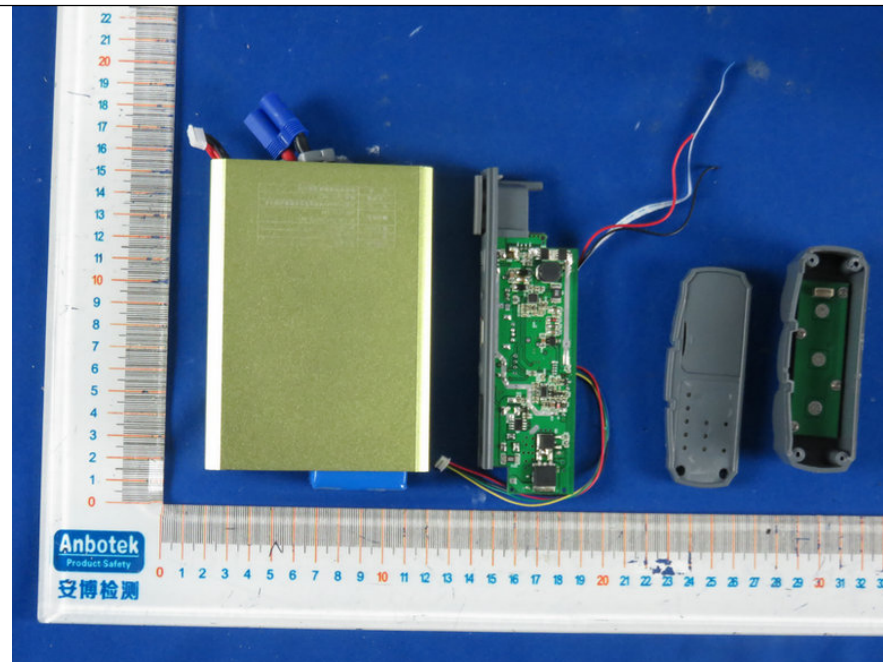
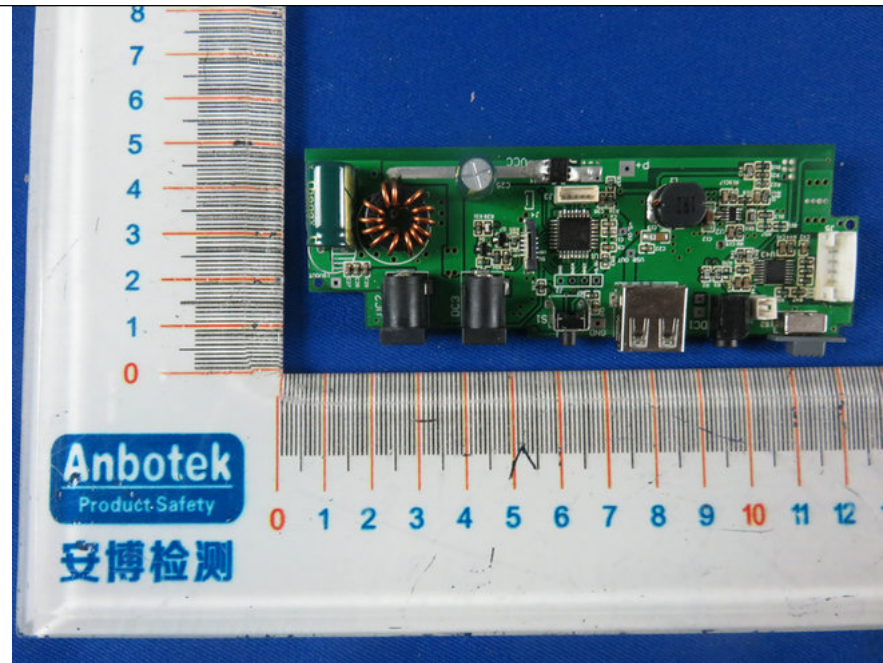


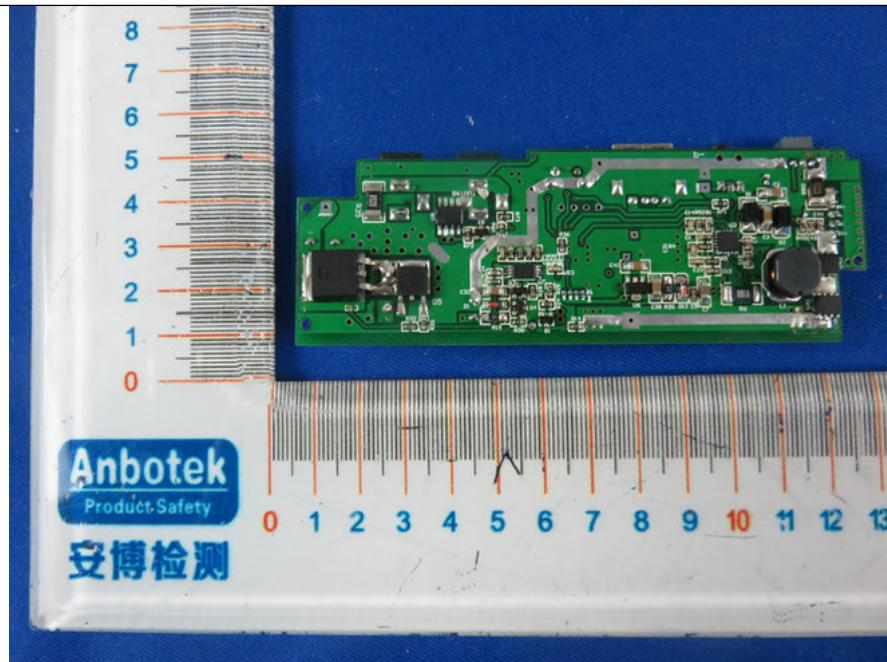
1. Figure  
The EUT-Inside View



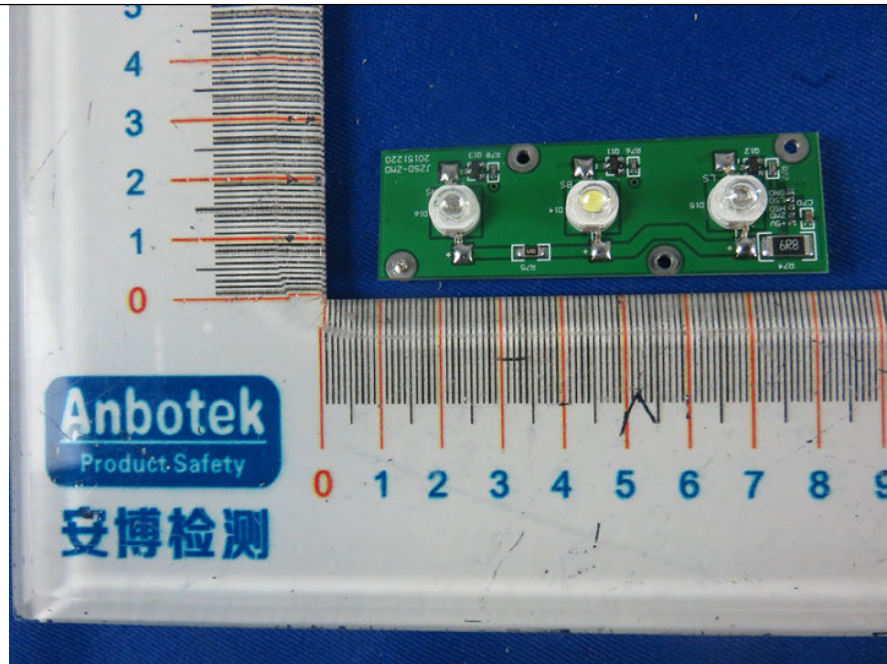
2. Figure  
PCB of the EUT-Front View



3. Figure  
PCB of the EUT-Back View

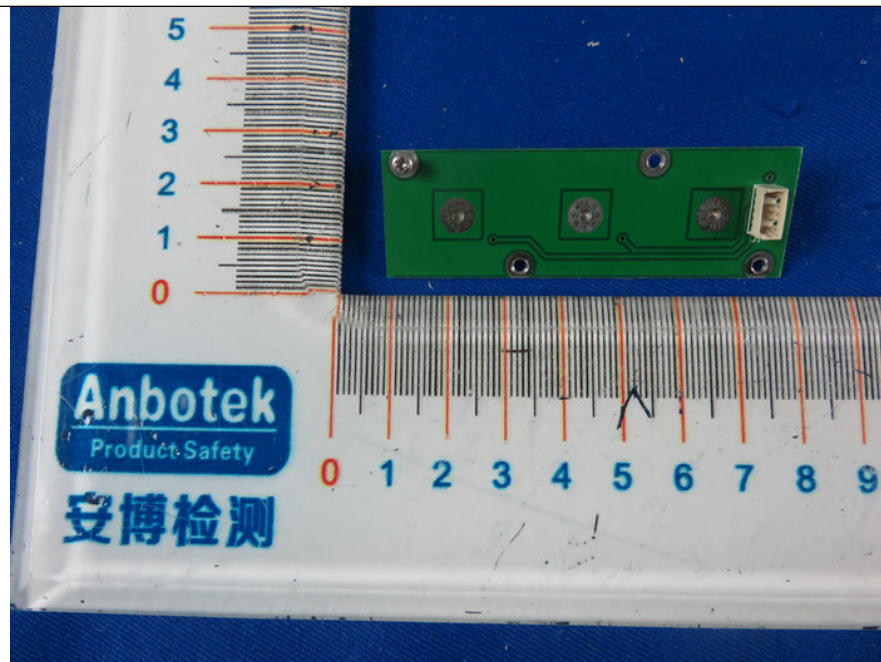


4. Figure  
PCB of the EUT-Front View

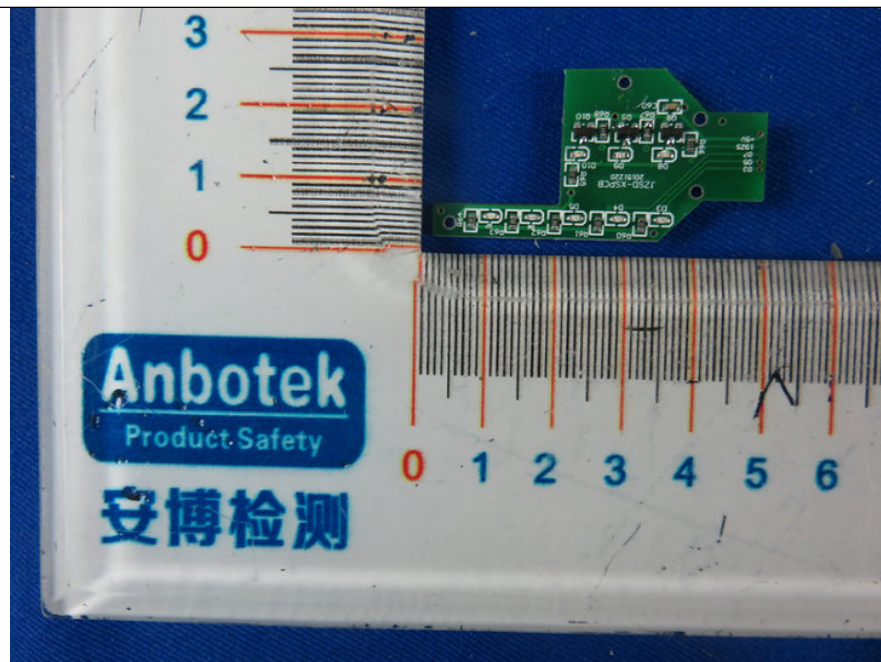




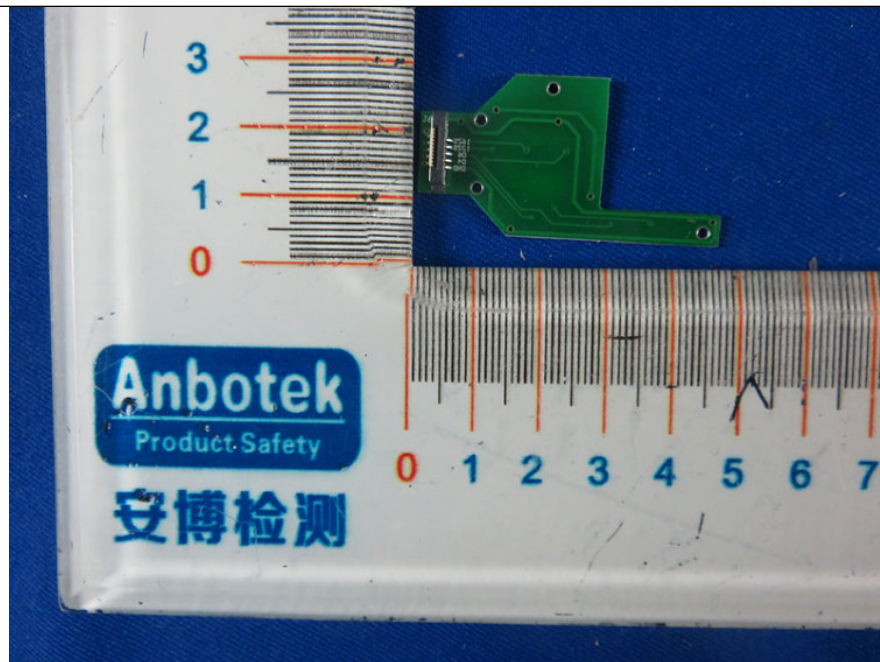
5. Figure  
PCB of the EUT-Back View



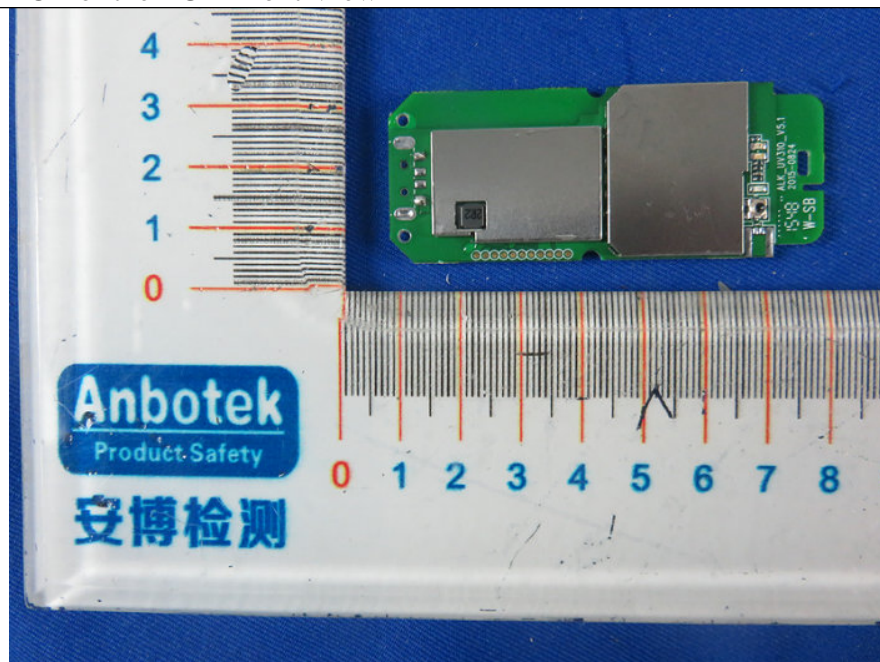
6. Figure  
PCB of the EUT-Front View



7. Figure  
PCB of the EUT-Back View

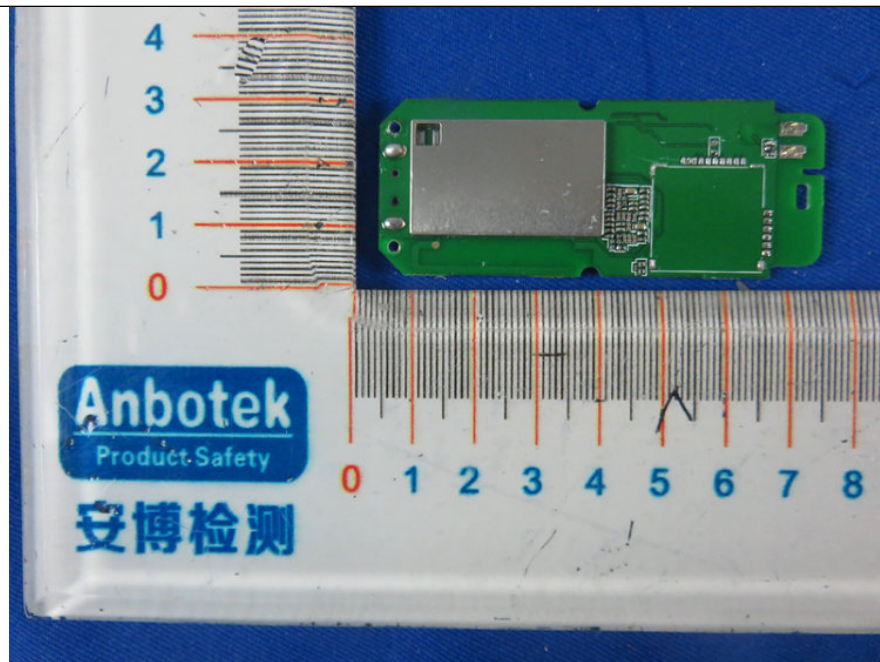


8. Figure  
PCB of the EUT-Front View

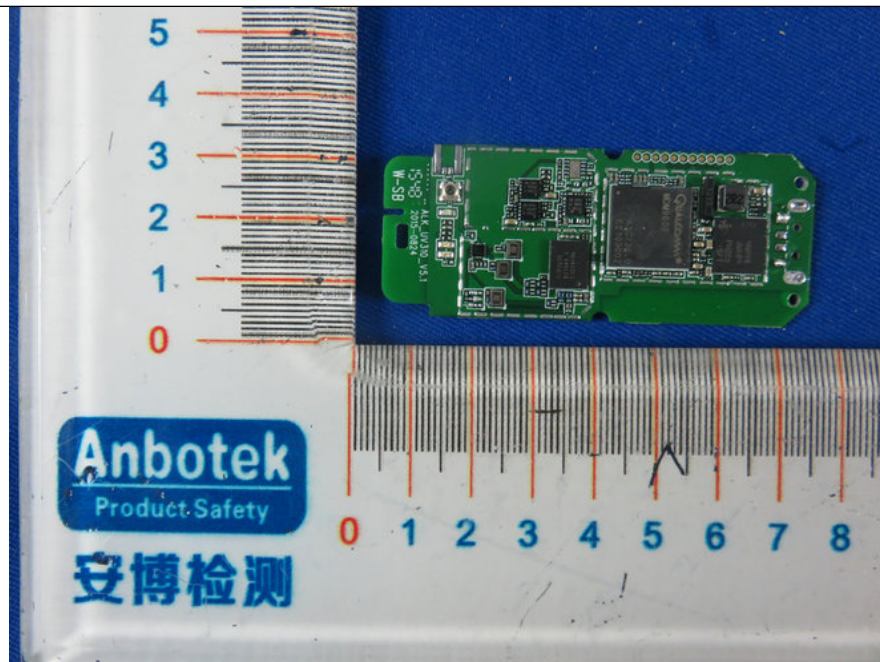




9. Figure  
PCB of the EUT-Back View

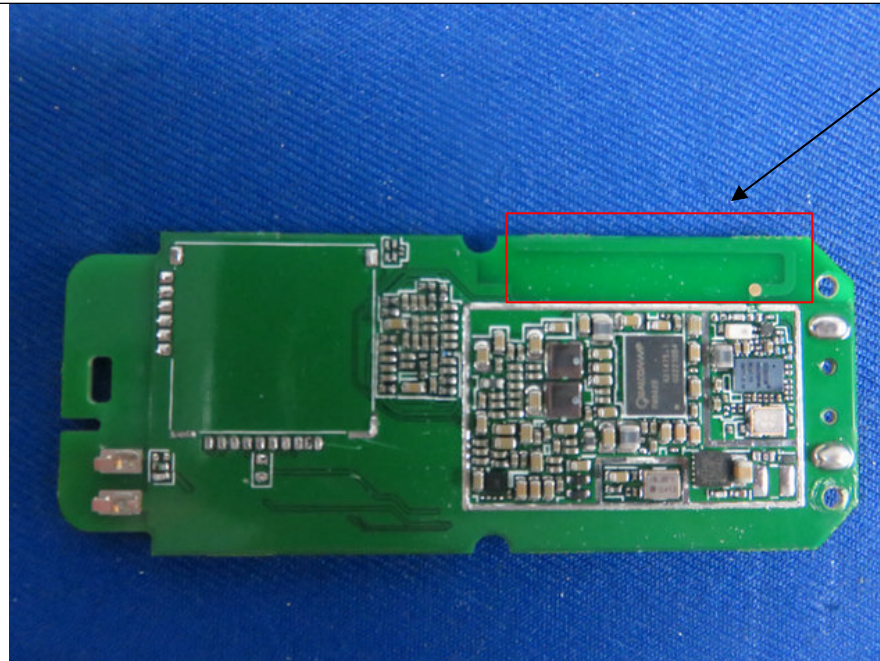


10. Figure  
PCB of the EUT-Front View



The image shows a green printed circuit board (PCB) for a mobile phone, likely a Nokia 3110i. The board is populated with various electronic components, including a Qualcomm processor (Q6600), memory chips (2R2), and a camera module. The board is labeled with 'ALK UW310\_V5.1' and 'W-SB'. The components are mounted on the board, and the board is shown against a blue background.

13. Figure  
PCB of the EUT-Back View



Antenna