


Assembly bottom

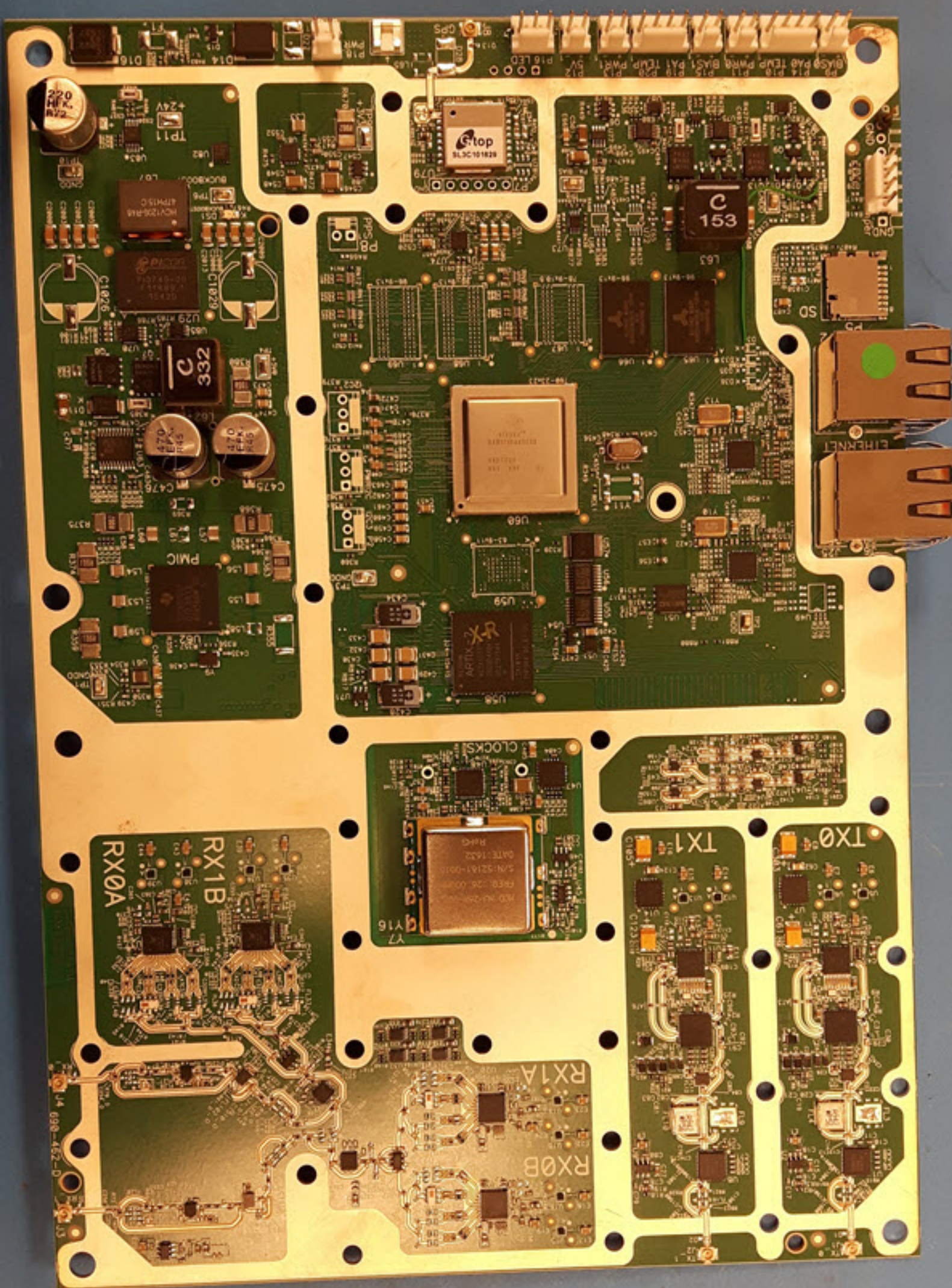




Main board with shields

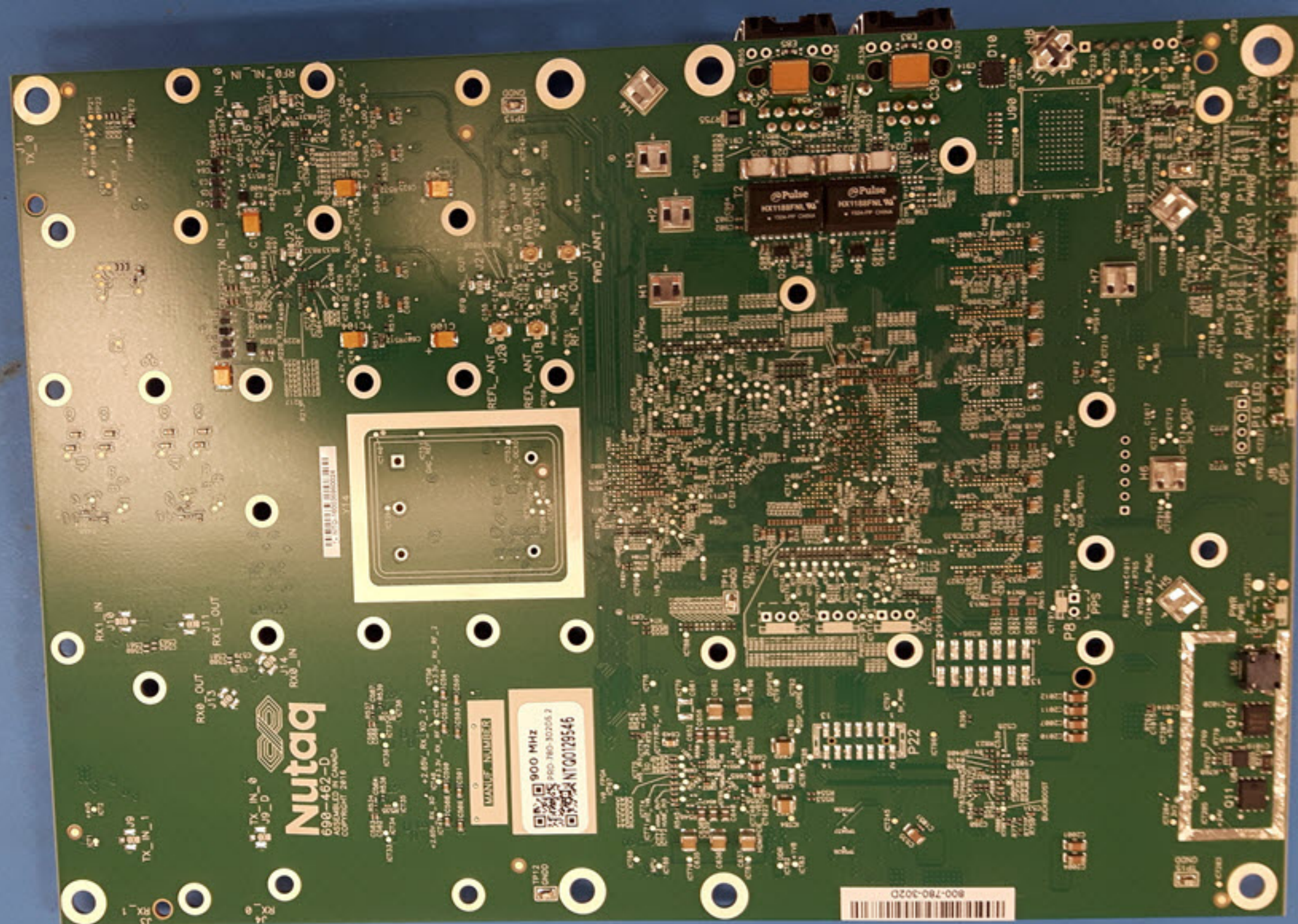
The image shows a rectangular main board, likely for a Raspberry Pi, with a large, shiny, metallic shield covering most of its surface. The shield has a brushed metal texture. At the bottom edge, the board's components are visible, including two USB ports, a micro-USB port, and a small green circuit board with various components and a gold-plated edge connector. The board is resting on a light-colored wooden surface.





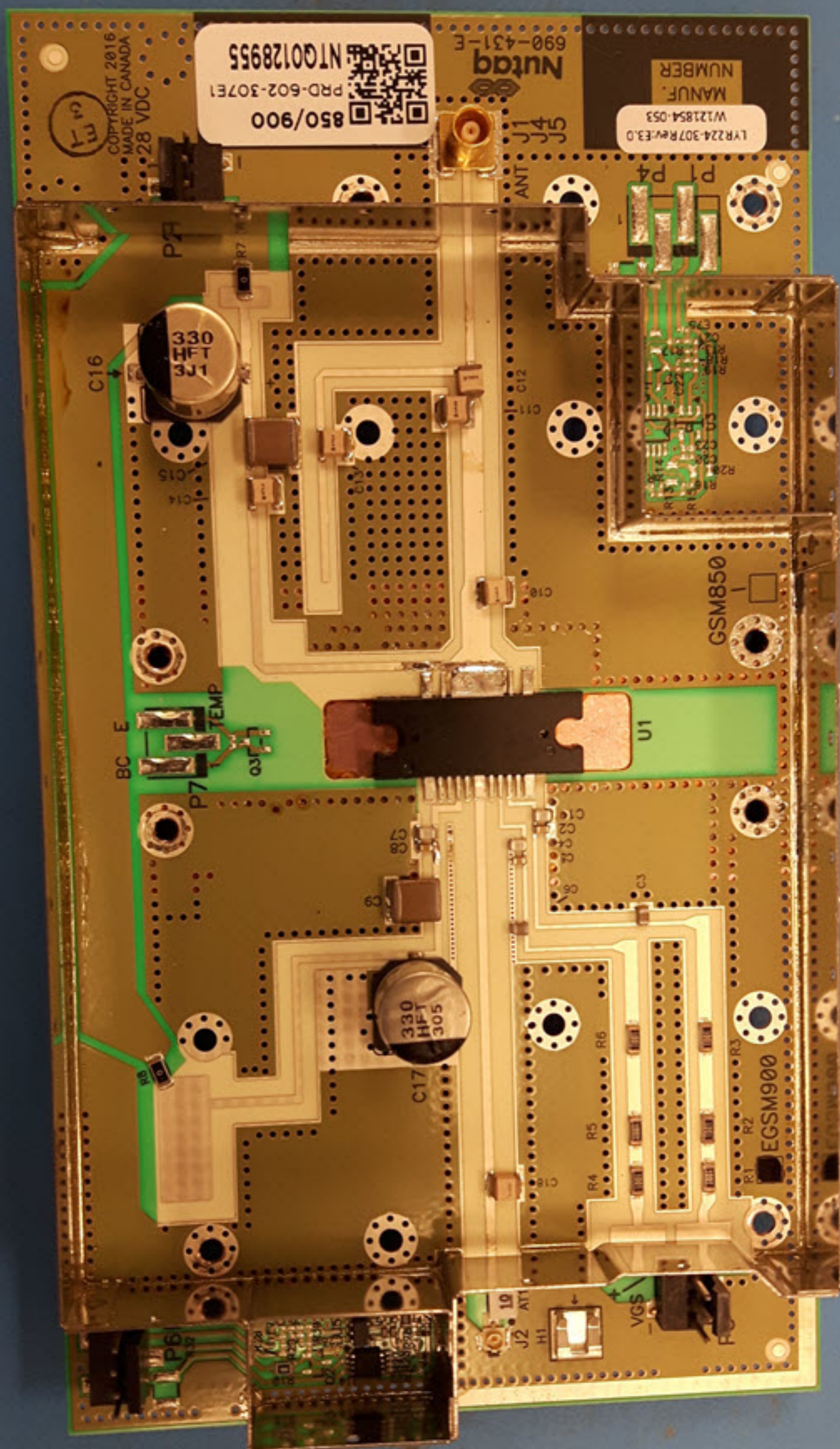
Main board top with shields removed





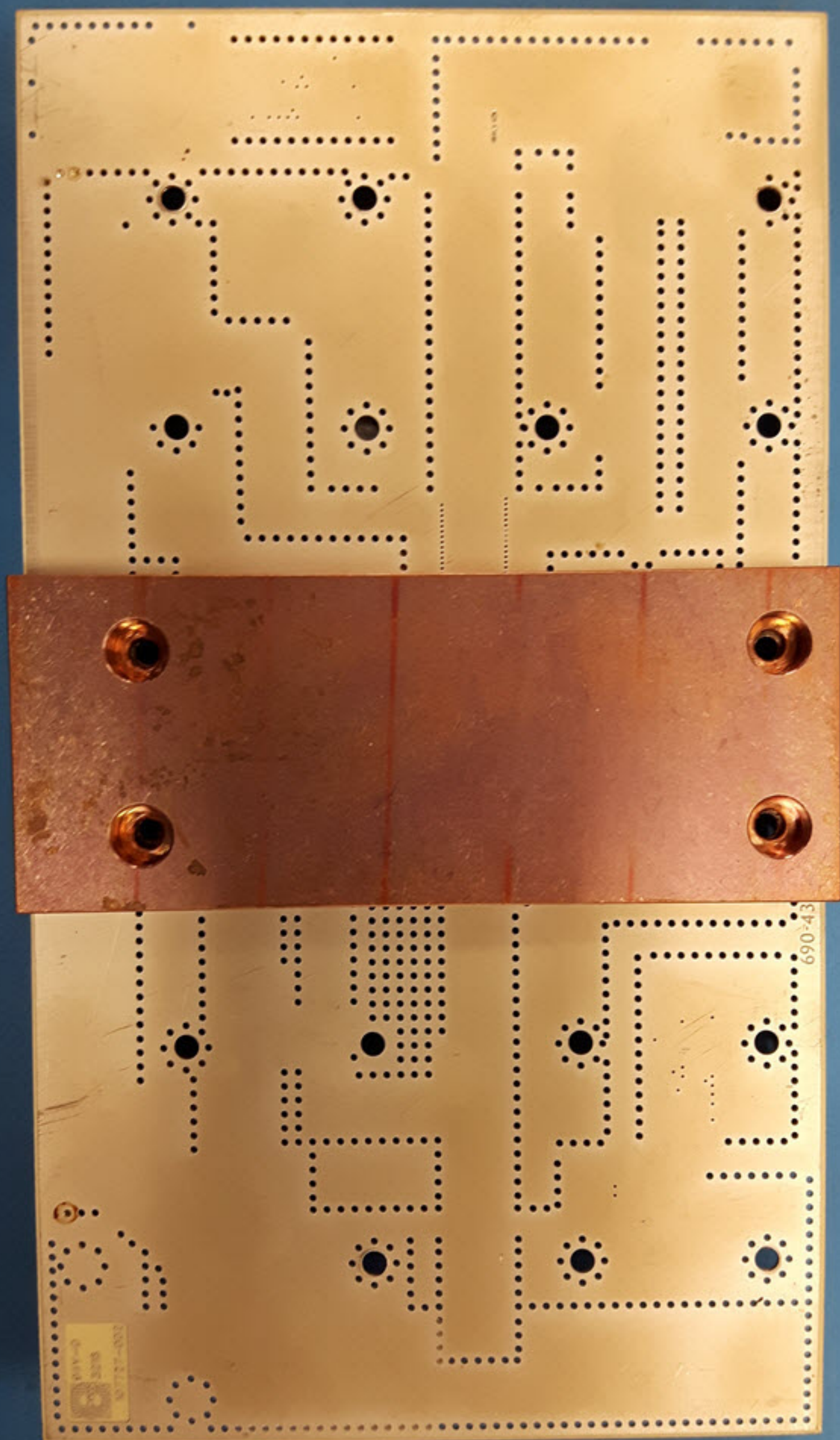
Main board bottom





PA board top





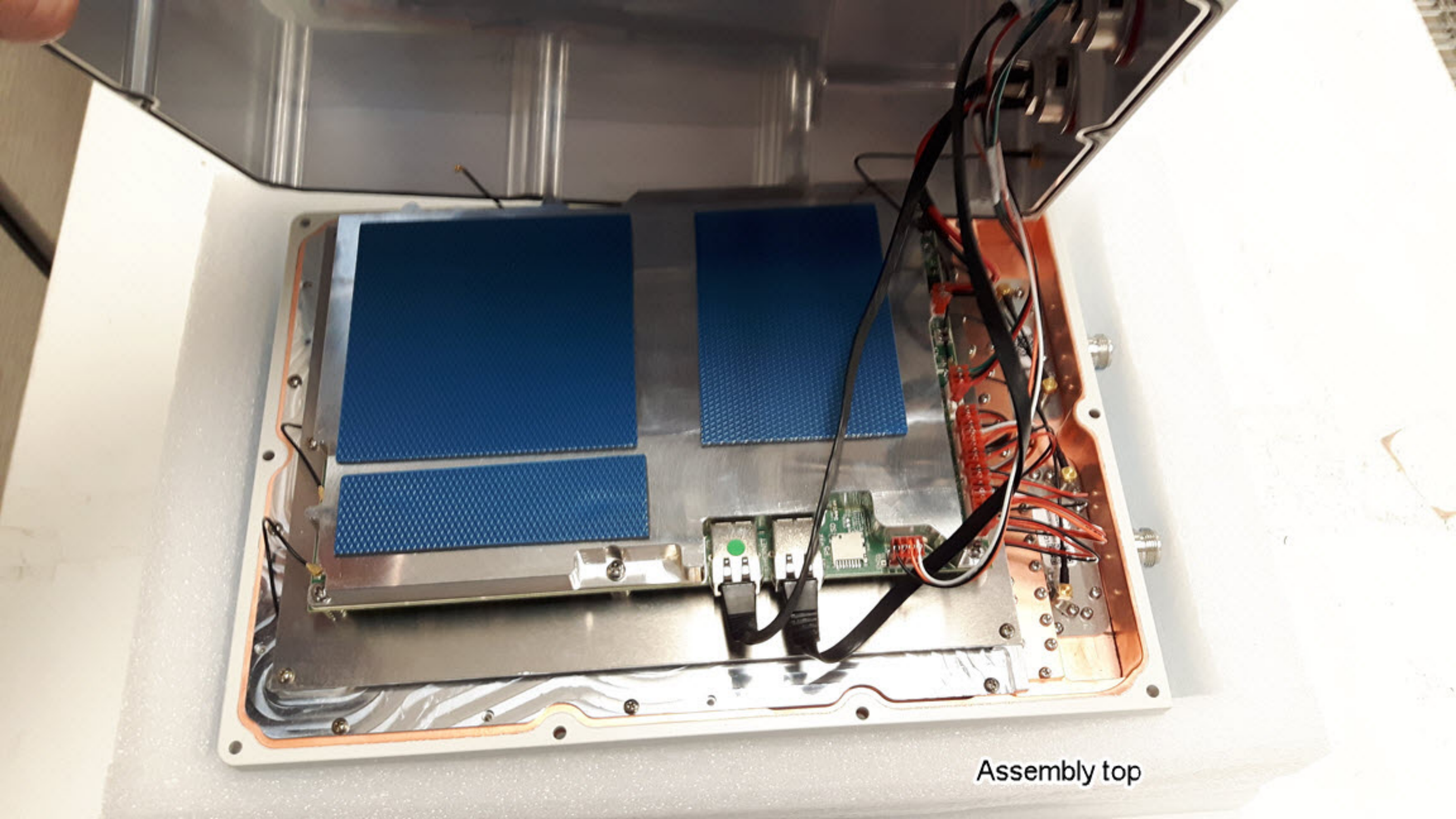
PA board bottom





Assembly with boards removed





Assembly top