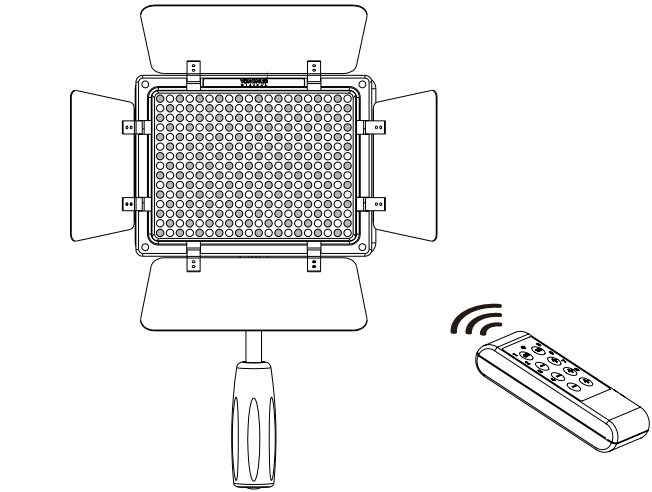


YN300 III

Pro LED Video Light

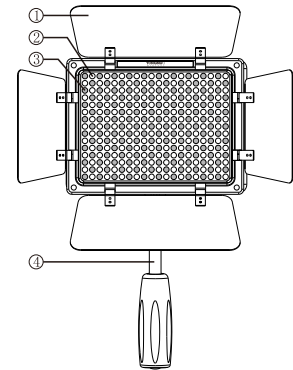
User Manual



Before using this product, please read this user manual carefully and keep it properly for reference.

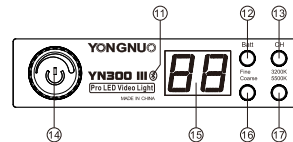
Summary
First of all, thank you for using the YN300 III LED video light. This video light is formed by 150 LED lamp beads with 3200K color temperature and another 150 LED lamp beads with 5600k color temperature, which are high-quality lamp beads of extra-large luminous chips, with higher luminance in same energy consumption. The color temperature can be adjusted from 3200K-5600K as needed, with more practical use; In addition, it adopts the Yongnuo proprietary LED driving technology, definitely not appear the corrugated, stroboscopic and other negative phenomena when shooting; It adopts the encoder digital dimming mode, thus the video light can be dimmed accurately and reliable; Equipped with 8 channel grouping feature; Besides, it can remote control through the remote controller or mobile phone, control the output power and realize other functions of the video light.

I. Product Structure

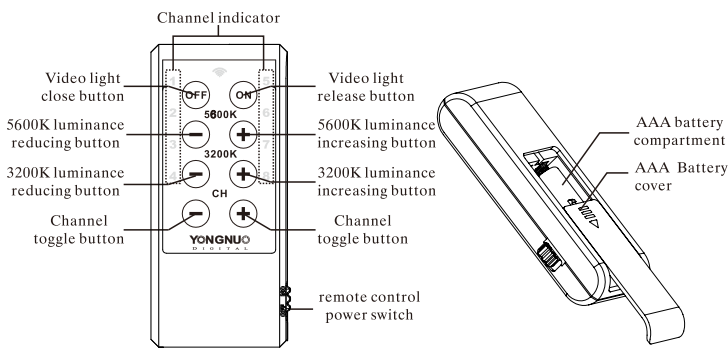


1. Reflector
2. 5600k Color Temperature lamp beads
3. 3200k Color Temperature lamp beads
4. Handle
5. DC Power Jack
6. Battery Lock Button
7. Adjusting Screw
8. Hot Shoe Fastening Knob
9. Metal Hot Shoe Base
10. Mini-type Base
11. Bluetooth Connection Indicator
12. Electric Quantity Testing Button
13. Channel Switch Button
14. Power Switch/Luminance Adjustment Knob

15. LED Digital Display Screen
16. Coarse/Fine adjusting Switch Button
17. 3200K/5600K Color Temperature Switch Button



Remote Controller Structure



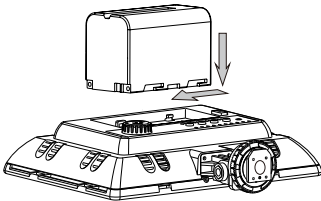
II. Introduction

1. Equipped with multi-channel wireless remote control, which can off-camera adjust the luminance and power switch, allows you operate more easily.
2. APP can be downloaded from the official website, control the LED video light through the mobile phone, read the current luminance and channel of the LED video light. It can respectively control 8 groups of luminance and power switch of the video light, allows you control the LED video light as needed.
3. YN300 III is formed by 150 LED lamp beads with 3200k color temperature and another 150 LED lamp beads with 5600k color temperature, which are high-quality lamp beads of extra-large luminous chips, with higher luminance in same energy consumption. The color temperature can be adjusted from 3200-5600K as needed, with more practical use.
4. Adopts the Yongnuo proprietary LED driving technology, definitely not appear the corrugated, stroboscopic and other negative phenomena when shooting.
5. YN300 III adopts the encoder digital dimming which can be separately adjusted to rough dimming and fine dimming modes, more convenient to use.
6. YN300 III adopts LED digital display screen, the power output will be more intuition.
7. Supports external DC power input, which convenient for your long shooting (the power adapter is optional).
8. Provides two color temperature plates, suitable for use under different environments.

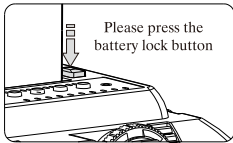
III. Installation and fixed

1. Install Battery

When install the lithium battery, please put the battery into battery container in the direction shown by the arrow.
Note: NP-F series battery is applicable, please remove the battery when not in use.

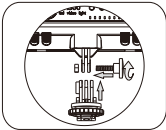


- b. When removing the lithium batteries, please press the battery lock and then take out the lithium batteries.

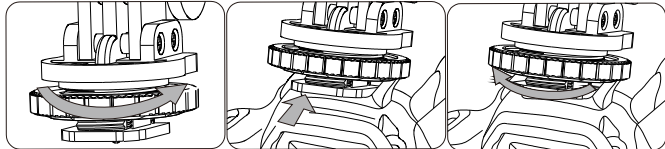


2. Camera Lamp Installation

First fasten the lamp base to the bottom of the product with the adjusting screw and then adjust the angle of the lamp as needed.



3. The camera lamp can be fastened as the following methods according to your requirement:
a. Fix on the DSLR/Camera hot shoe.

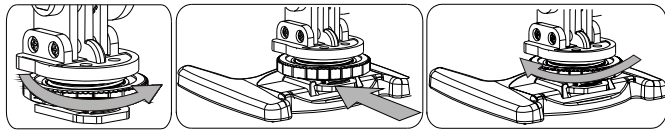


① Screw the hot shoe fastening knob to the top in the direction of the arrow.

② Insert the lamp into the camera/camera hot shoe base in the direction of the arrow.

③ Tighten up the hot shoe knob in the direction of arrow.

- b. Place it on the desktop or on a plane, and use it with the miniature stand attached.

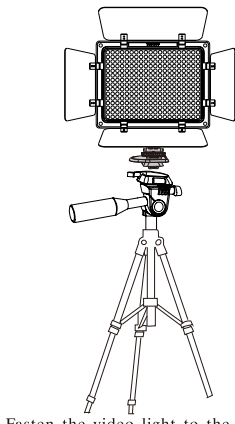
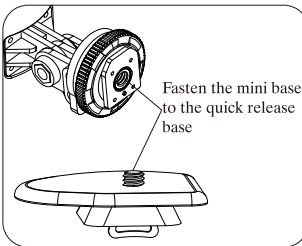
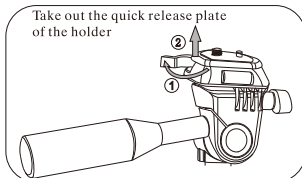


① Rotate the hot-shoe lock knob to the top in the direction of the arrow.

② Push the metal hot-shoe on the lamp foot in the miniature stand in the direction of the arrow.

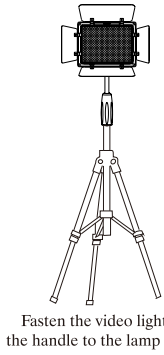
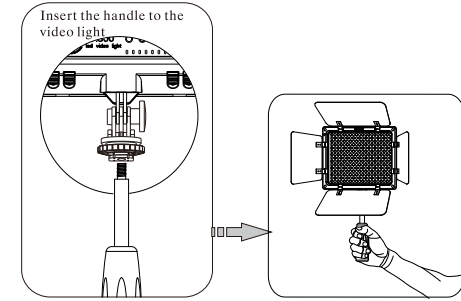
③ Screw up the hot-shoe lock knob in the direction of the arrow.

- c. Fasten the video light to the tripod directly



Fasten the video light to the tripod

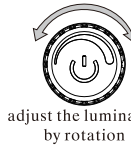
- d. Fasten the video light to the handle attached



Fasten the video light with the handle to the lamp bracket

4. Start-up and adjust the brightness

- a. Press the power switch and the LED camera light lit, rightwards rotate to increase the luminance, leftwards rotate to reduce the luminance.



adjust the luminance by rotation

- b. Fine/Coarse Button

Divided into coarse and fine adjusting mode, which will be more convenient for use. Press the Fine/Coarse button to conduct to Fine/Coarse adjustment, when the indicator light of Coarse bright, it will enter into coarse adjusting mode, the luminance will be adjusted with 10% as an adjusting grade. Then press the button to switch to fine adjusting, the luminance will be adjusted with 1% as an adjusting grade.



Coarse tuning mode



Fine tuning mode

5. Color temperature Adjustment

Press the 3200K/5600K button to switch the color temperature, the color temperature can be adjusted from 3200-5600K as needed. Press the button until the indicator light bright on the 3200k, rotate the luminance adjustment knob to adjust the light of 3200K color temperature; Then press the button to switch to until the indicator light bright on the 5600k, rotate the luminance adjustment knob to adjust the light of 5600K color temperature.



Press this button, the indicator will light up at 3200K. By this time, the light of 3200K can be adjusted



Press this button, the indicator will light up at 5600K. By this time, the light of 5600K can be adjusted

6. Test of Electric Quantity

Press the Batt electric quantity testing button, the readings show the percentage of remaining battery power of two batteries. The readings can be divided into P0-P9 nine grades, which indicates 0%-90% of the electric quantity. For example, the readings P3 as the picture shown indicates the electric quantity is 30% (Note: the power test with low luminance is different from that with high luminance, thus the service time is based on the current luminance).



7. Channel Switching

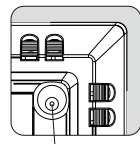
Press the channel switching button CH can switch the remote receiver channels, the displayed screen appears H1 to H8, assuming the channel of video light switch to H2 (as the picture shown below), the channel of the remote controller will be also adjusted to CH2 transmit channel (as the right picture shown), then the remote controller can control the video light. If you have more than one unit of the same model, the luminance and power switch can be controlled by grouping, at most divided into eight groups. (There is numbers 1-8 on the remote controller panel, which corresponds to the corresponding channels, switch the channel through CH+/CH-).



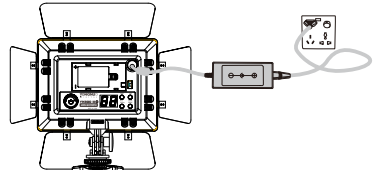
Adjust the channel of the video light to the channel needed

8. External Power Supply

It is recommended to use YONGNUO power adapter with YN300 III to obtain lasting service time. When using external power supply, the video light will stop the battery power supply automatically and will not get the battery charged. The external power supply interface outside is positive and the interface inside is negative. The input voltage is 12V and the electric current is 5A. Note: If YN300 III defective when it is used with power adapter of other brands, YN300 III will no longer be guaranteed for repair.

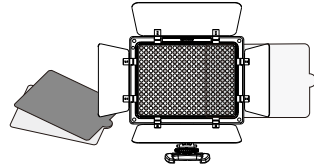


Use by inserting the power adapter through DC power hub



IV. Color Temperature Filters

YN300 III comes with two pieces of CT filters. Simply insert the CT filters into the side slot to meet your requirement in different circumstances.



V. Remote Dimming Mode

The wireless remote controller attached can adjust the luminous intensity and control the switches of YN300 III. The maximum remote controlling distance is up to 15 meters.

VI. Mobile APP Remote Control

The product supports mobile remote control, the APP can be downloaded from the YONGNUO official website or download through scanning the two-dimension code on the gift box, Mobile phone APP will be updated continuously. Please pay attention to YONGNUO official website for latest version of APP to get better remote control experience.

VII. Product Specification

Light Source	300 LED beads	Luminance Angle	55°
Color Temperature	3200K-5600K	Mobile Phone Remote Control Distance	<15m
Output power	18W	Remote Control Distance	<15m
Lumen	2325LM	Weight	650g
Average Service Life	50000H	Size	173*153*46MM
		Power Supply	A lithium battery or external 12V5A DC power supply
Contents: Video light(1), Remote controller(1), Handle(1), User manual(1), Color plates(2), Light base(1), Micro base(1) Note: Should anything missing please contact your dealer			

VIII. Failure Analysis and Troubleshooting

When using this product, you may encounter the following problems:

Description	Cause	Troubleshooting
No reaction after power on	Low Battery	Install new batteries or connect external power supply
	Damaged circuit board	Depot repair
Inadequate or low luminance at the greatest luminous intensity	Low battery	Install new batteries or re-charge the batteries
Inaccurate battery capacity test; low battery in high luminance and full battery in low luminance.	The battery capacity indicates the length of time available for the use in the current luminance. Higher luminance required more power and the length of time available for use will be shortened, so the battery capacity shown gets lower	Normal phenomenon and no measure needed
The video light can't be controlled remotely.	Too far away	Ensure the remote control distance is no more than 15 meters
	Remote control and LED light are on different channels	pls refer to User Manual to reset channel
The pilot lamp on the remote controller is dimming	Low battery	Replace two AAA batteries

FCC Statement

This device complies with part 15 of the FCC Rules. Operation is subject to the following two conditions:

- (1) This device may not cause harmful interference, and
- (2) this device must accept any interference received, including interference that may cause undesired operation.

Class B device

NOTE: This equipment has been tested and found to comply with the limits for a Class B digital device, pursuant to part 15 of the FCC Rules. These limits are designed to provide reasonable protection against harmful interference in a residential installation. This equipment generates, uses and can radiate radio frequency energy and, if not installed and used in accordance with the instructions, may cause harmful interference to radio communications. However, there is no guarantee that interference will not occur in a particular installation. If this equipment does cause harmful interference to radio or television reception, which can be determined by turning the equipment off and on, the user is encouraged to try to correct the interference by one or more of the following measures:

- Reorient or relocate the receiving antenna.
 - Increase the separation between the equipment and receiver.
 - Connect the equipment into an outlet on a circuit different from that to which the receiver is connected.
 - Consult the dealer or an experienced radio/TV technician for help.
- Warning: Changes or modifications not expressly approved by the party responsible for compliance could void the user's authority to operate the equipment.

The functions in this manual are based on the test conditions our company.

Further notice will not be given if the design and specifications change.

SHENZHEN YONGNUO PHOTOGRAPHY EQUIPMENT Co.Ltd.

Add: Building A, Shenfubao modern optics factory, Kengzi Street,

Pingshan District, Shenzhen

TEL: 0755-8376 2448

Wed: www.hkyongnuo.com

After-sales Service TEL: 400-0013-888