

Figure 1
General Appearance (Chassis)



Figure 2
General Appearance (I/O Ports)



Figure 3
I-Button (Front View)



Figure 4
I-Button (Back View)

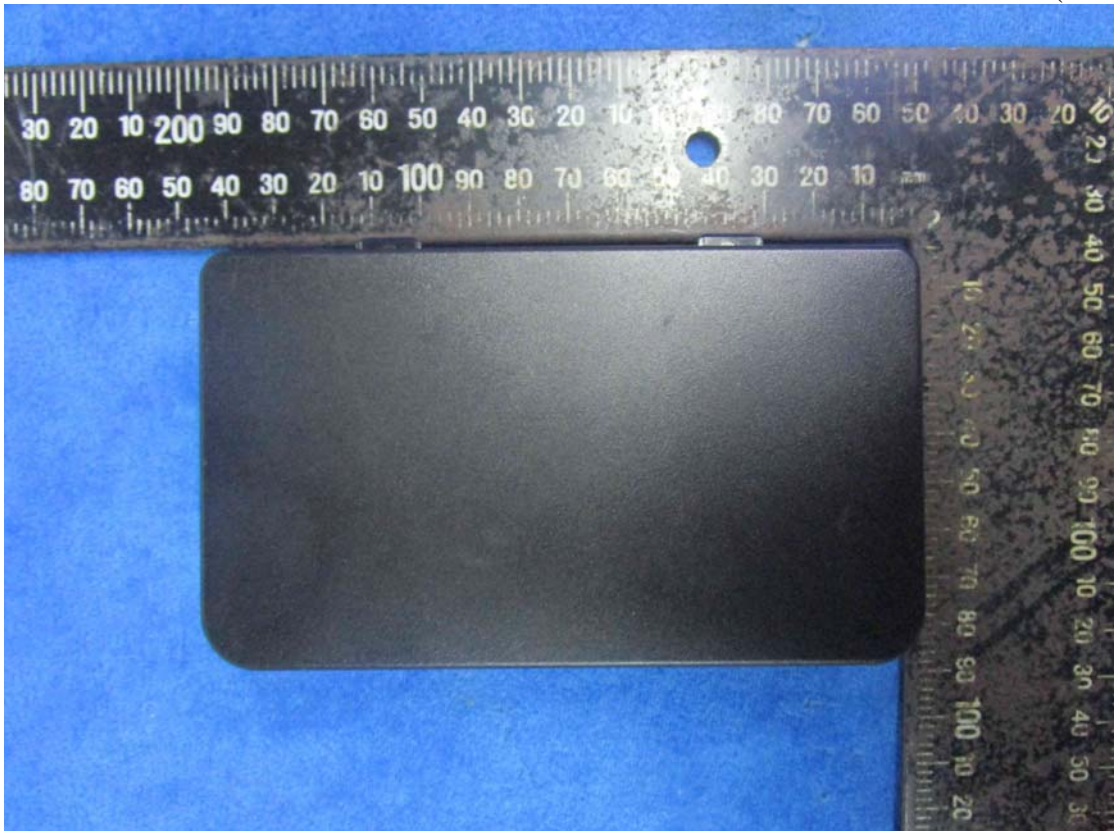


Figure 5
Internal View



Figure 6
Motherboard (Component Side)



Figure 7
Motherboard (Solder Side)



Figure 8
Motherboard (I/O Ports)



Figure 9
Motherboard (Crystal Oscillator)

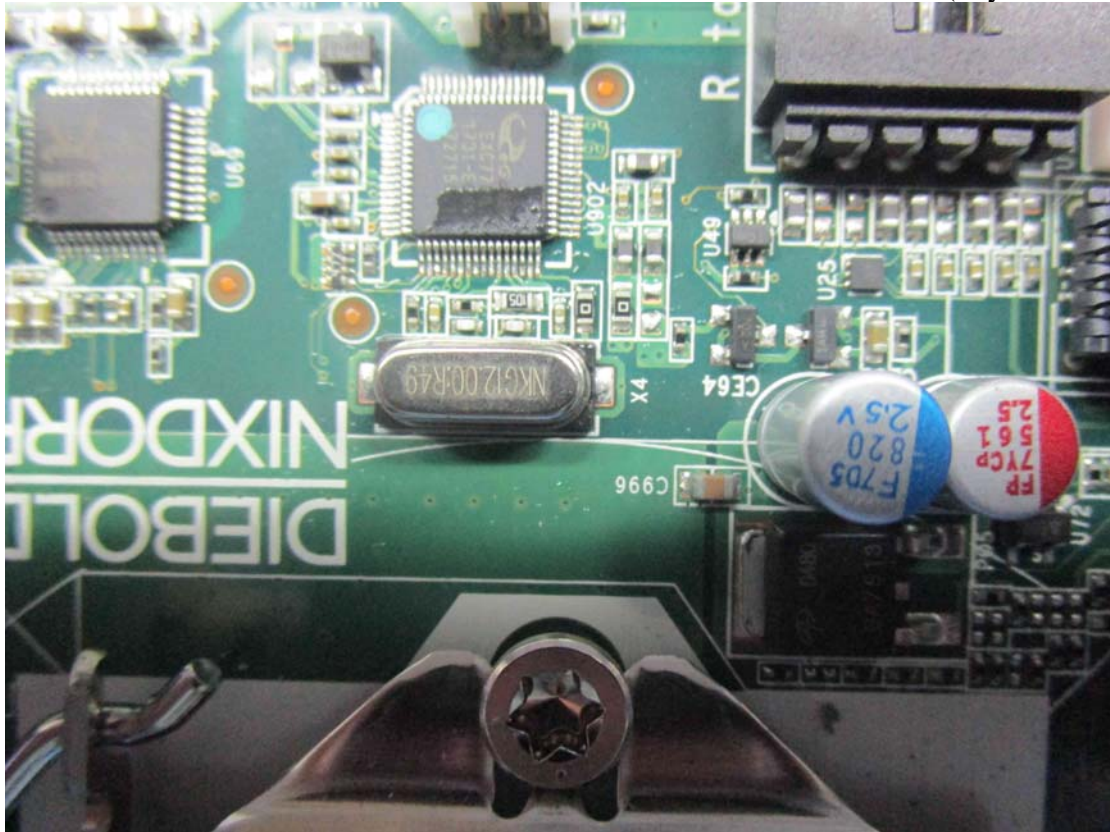


Figure 10
Motherboard (Crystal Oscillator)

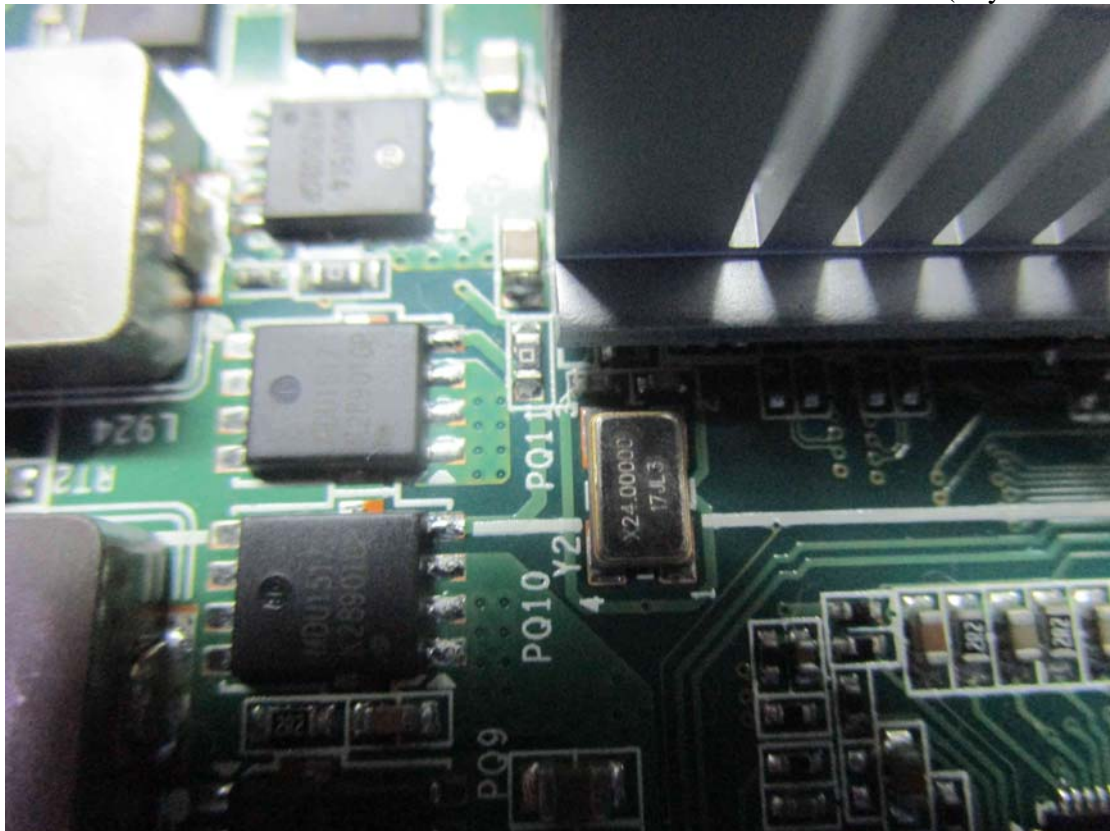


Figure 11
Motherboard (Crystal Oscillator)

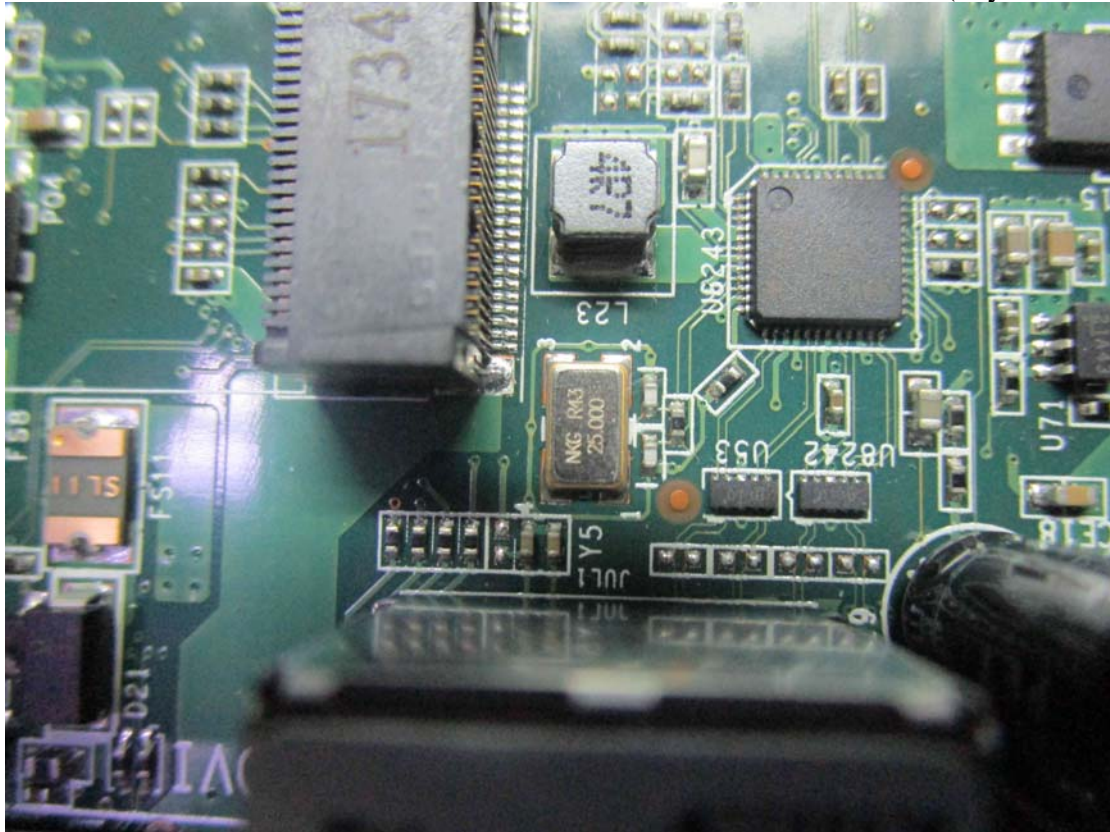


Figure 12
Memory (Component Side)



Figure 13
Memory (Solder Side)



Figure 14
HDD (Front View)



Figure 15
HDD (Back View)



Figure 16
CPU Fan

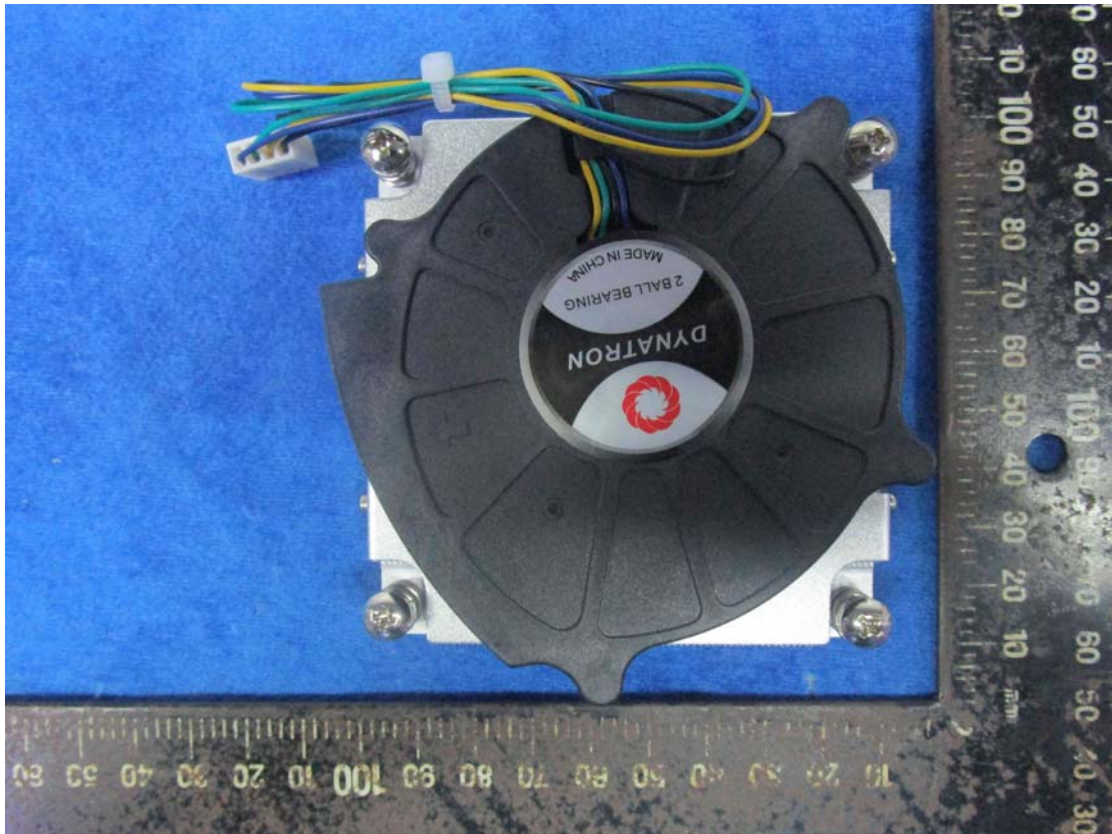


Figure 17
CPU Heatsink

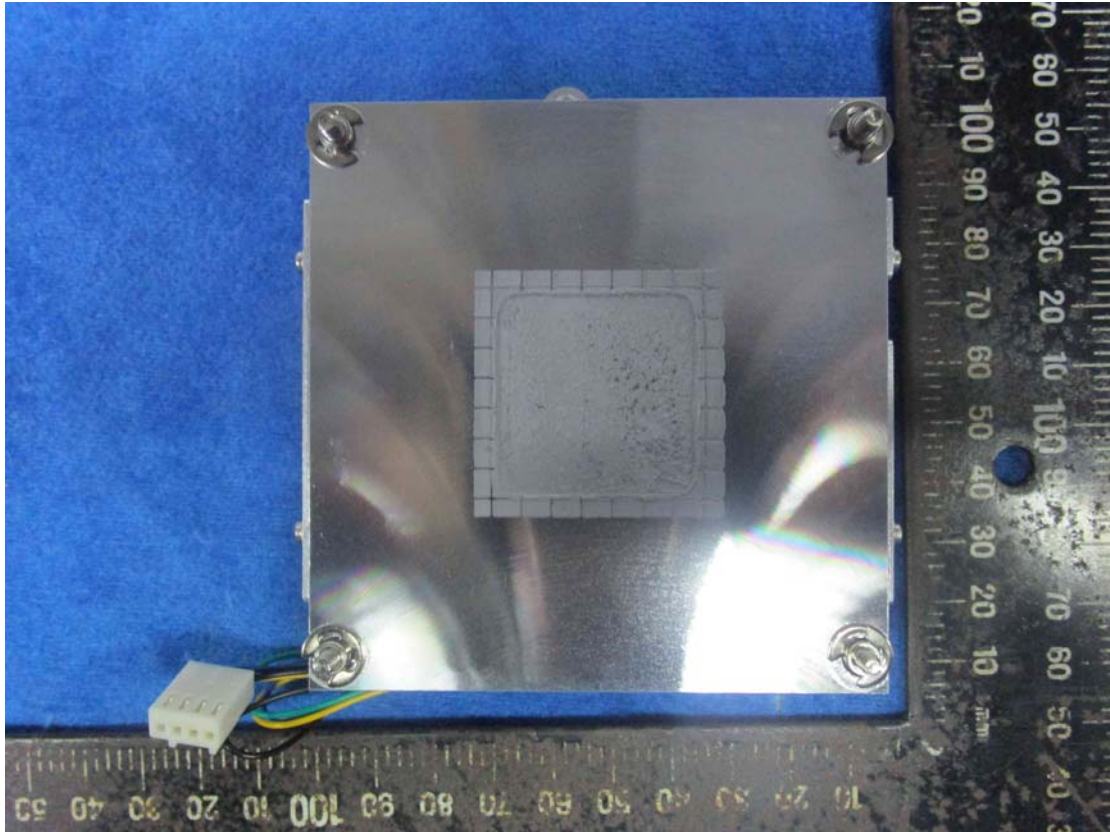


Figure 18
Speaker

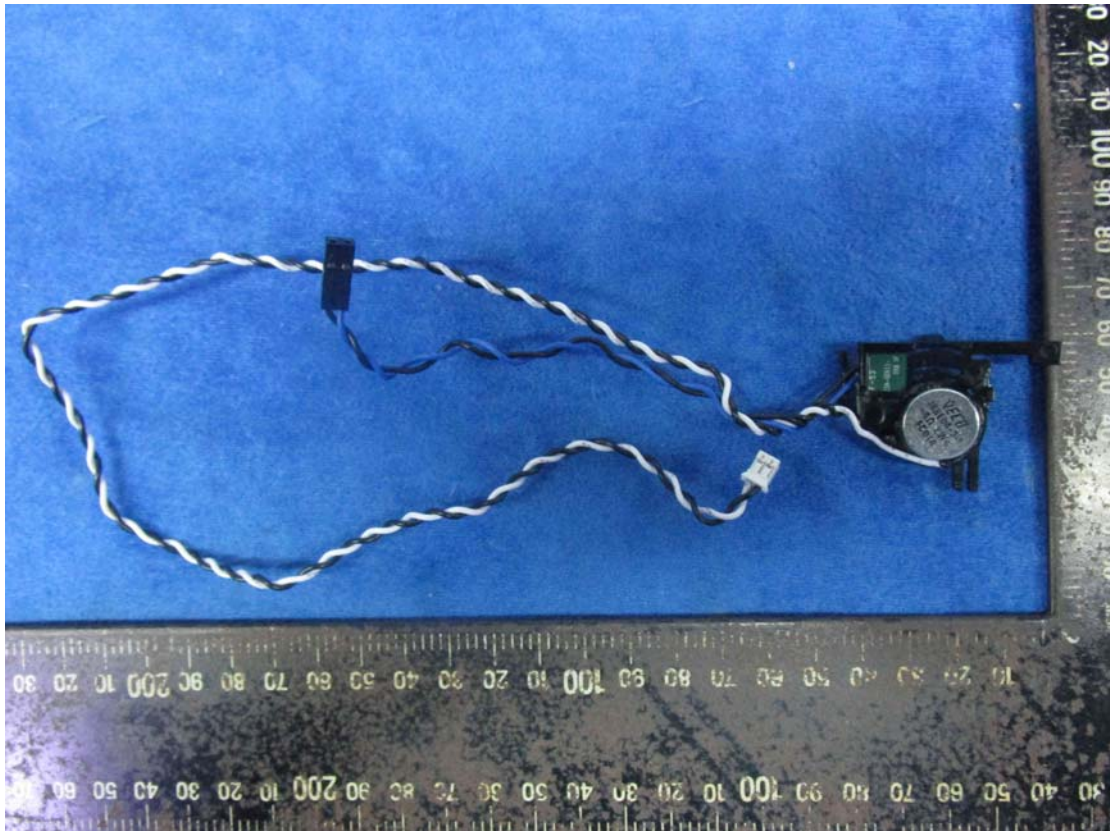


Figure 19
LCD Panel (Front View)



Figure 20
LCD Panel (Back View)

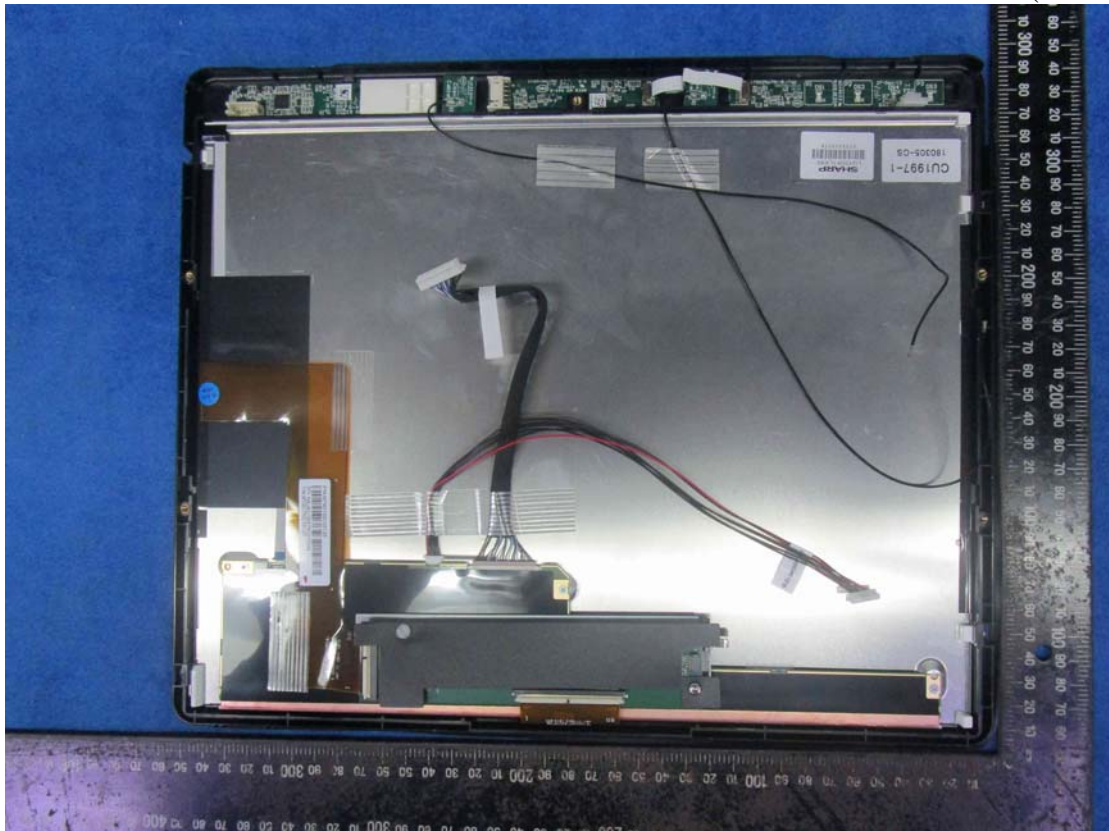


Figure 21
LCD Panel (Label)



Figure 22
CPU (Front View)



Figure 23
CPU (Back View)

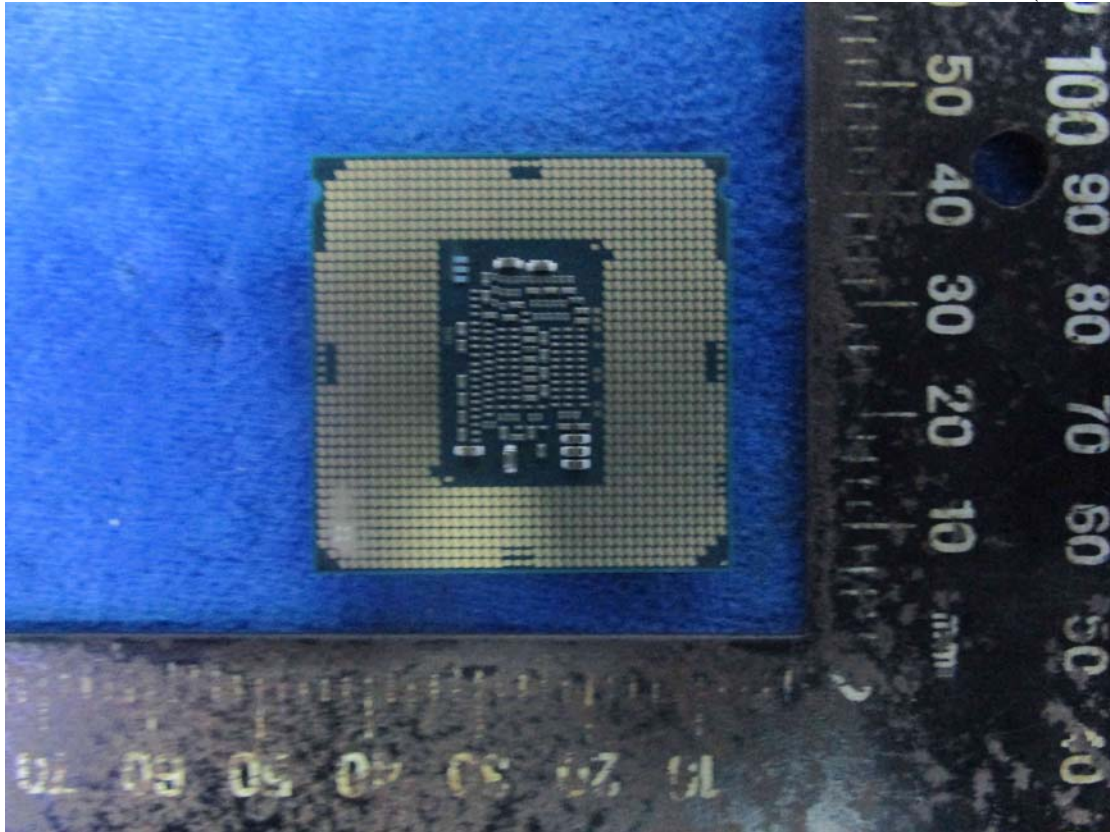


Figure 24
WLAN Card (Front View)



Figure 25
WLAN Card (Back View)



Figure 26
WLAN Card (Internal View)

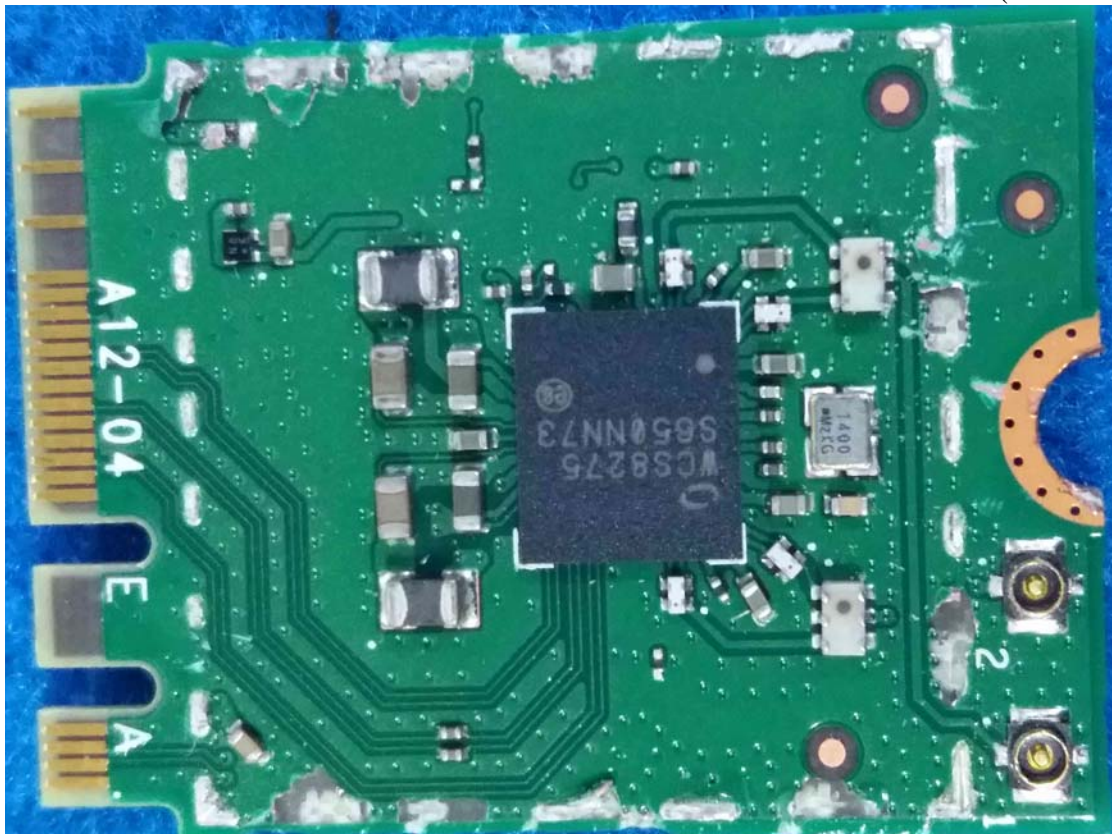


Figure 27
Antenna's Location

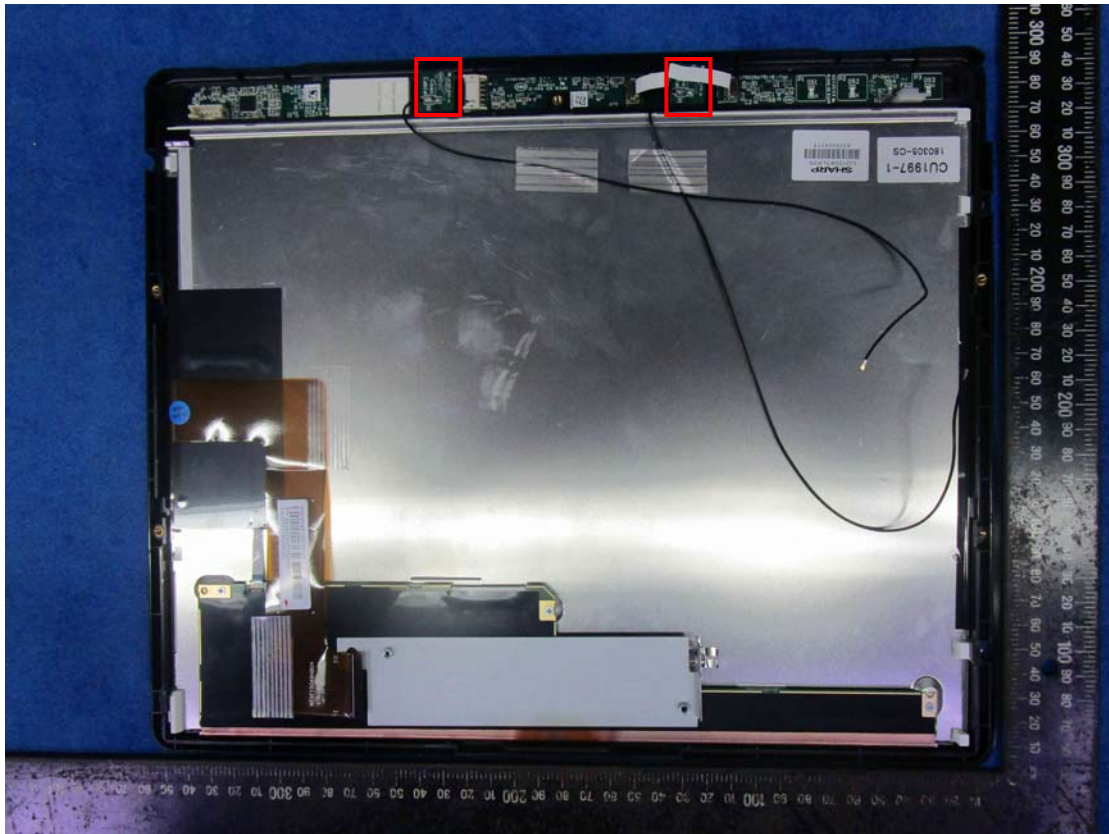


Figure 28
Antenna

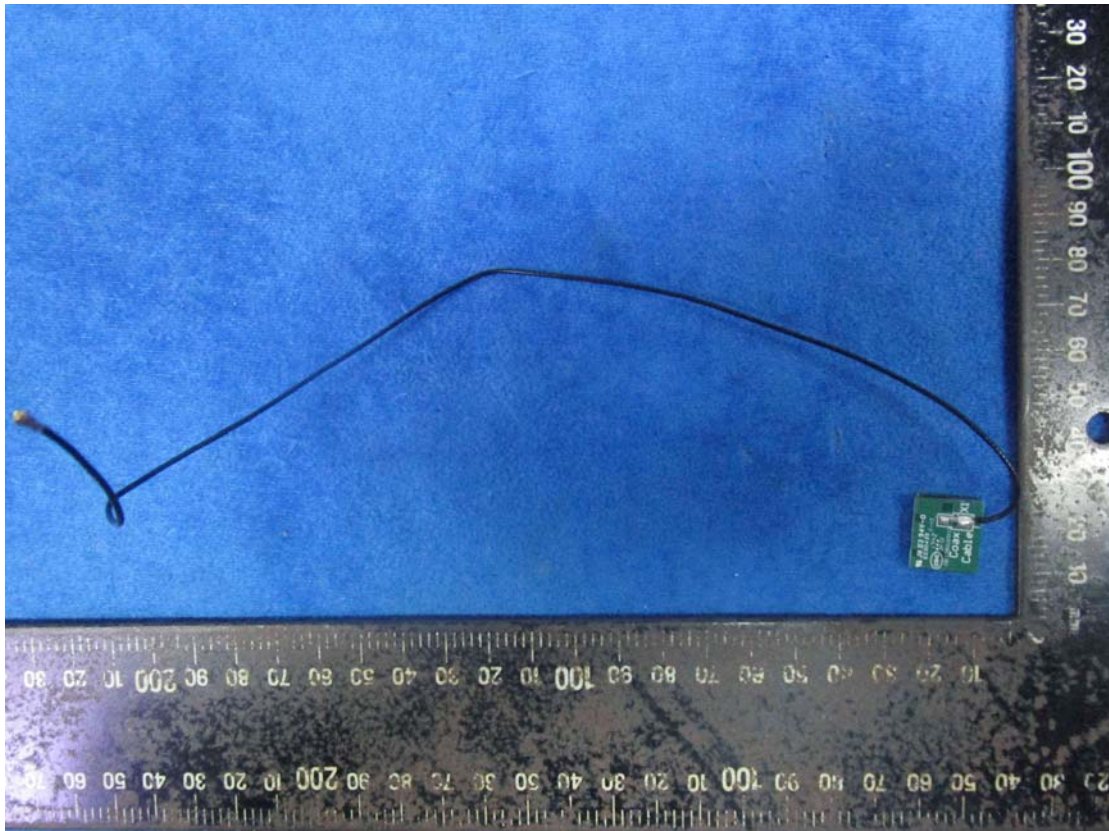


Figure 29
Antenna

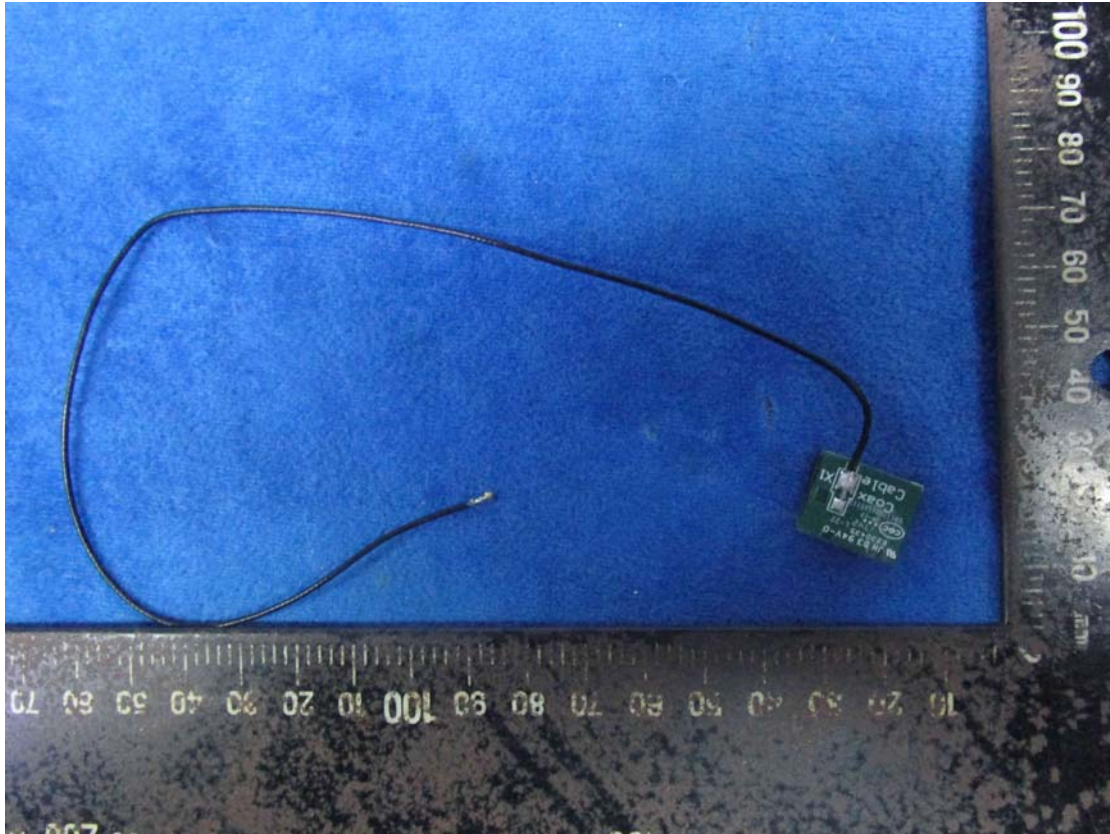


Figure 30
NFC Board

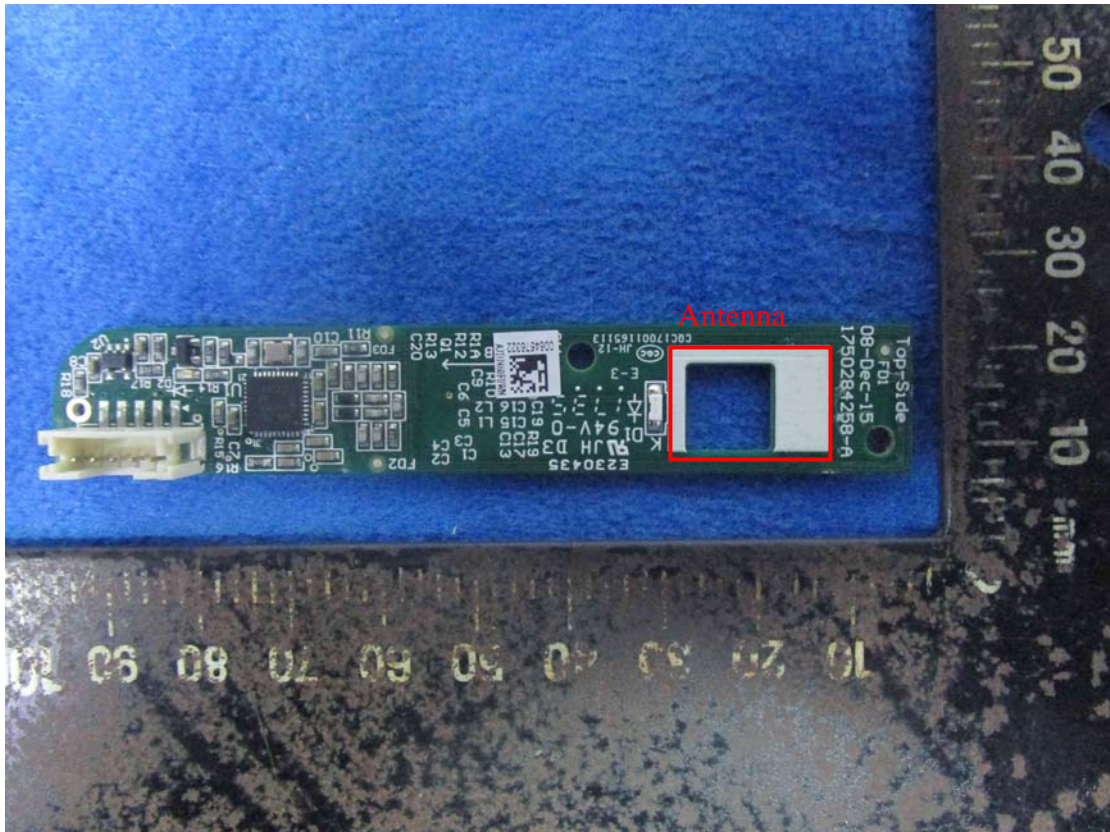


Figure 31
NFC Board (Crystal Oscillator)



Figure 32
AC Adapter



Figure 33
AC Adapter (Label)