

類別: Type	<b>BLE301i (BTA-065EX) User Manual</b> <b>MindMobile 3-in-1 Bluetooth Car Charger</b>	文件編號: Doc. #	<b>MT/WD02-20-113</b>
-------------	--	-----------------	-----------------------

## 1. Product Illustraion



## 2.Specification:

Bluetooth Spec. :	Version 4.0
Frequency Range :	ISM 2.402 to 2.480GHz
Bluetooth Profiles:	ATT、GATT、SMP、L2CAP、GAP
Transmittion Power:	Class 2
Wireless Distance:	10 meters
Output Voltage :	5V+/-0.25
Output Current :	1000mA

## 3. Bluetooth Functions and Introductions:

### Operation:

1. Plug in car charger power into cigarette lighter socket in vehicle. Power on BLE301i (BTA-065EX) to make it as pairing mode.

版本/修改狀態 Version/Changes: A/0 頁次 Pages: 1/7

此資料中的全部信息是華聯電電子(深圳)有限公司的智慧財產。請保密併遵守相關的保密協議。未經同意擅自流傳或拷貝者，我們將依法追述不法使用者。  
All information, and any attachments hereby, contain legally privileged and/or confidential information. It is the property of MegaTrend Electronics Co., Ltd.  
Unless it's agreed by MegaTrend Electronics Co., Ltd, we reserve the legal rights against any dissemination, distribution, copying and use of the information contained.

類別: Type	<b>BLE301i (BTA-065EX) User Manual</b> <b>MindMobile 3-in-1 Bluetooth Car Charger</b>	文件編號: Doc. #	<b>MT/WD02-20-113</b>
-------------	--	-----------------	-----------------------

2. Search APP store and find the software CarFinder and installed it into your phone.
3. Turn on the Bluetooth icon of your phone and operate the CarFinder APP software to pair up with BLE301i . When pairing is done, BLE301i will come up with green LED on. However, if the pairing procedure between your phone and BLE301i couldn't be completed within 15 sec. and failed the pairing, the red LED is on and beeps 6 times as alert.
4. When your phone connection to BLE301i is out of max.10m transmission distance, BLE301i will beep for 6 times to alert you the connection is out of range, you'll see the red LED flash fast.
5. When BLE301i disconnection/without power on or with power supply plug in again, if there's disconnection between your phone and BLE301i within 15 sec., you will hear the beeps for 6 times with red LED on. But, if the connection resume to work, you'll see the green LED is on.
6. See the example of illustration as followings, download CarFinder APP from APP store, clic once to enter the map mode of the software. The blue spot/pin showing where your phone is located.



版本/修改狀態 Version/Changes: A/0 頁次 Pages: 2/7

此資料中的全部信息是華聯電電子(深圳)有限公司的智慧財產。請保密併遵守相關的保密協議。未經同意擅自流傳或拷貝者，我們將依法追述不法使用者。  
All information, and any attachments hereby, contain legally privileged and/or confidential information. It is the property of MegaTrend Electronics Co., Ltd. Unless it's agreed by MegaTrend Electronics Co., Ltd, we reserve the legal rights against any dissemination, distribution, copying and use of the information contained.

類別: Type	<b>BLE301i (BTA-065EX) User Manual</b> <b>MindMobile 3-in-1 Bluetooth Car Charger</b>	文件編號: Doc. #	<b>MT/WD02-20-113</b>
-------------	--	-----------------	-----------------------

7. Power on /Plug in BLE301i into cigarette lighter in vehicle. First, you have to turn on Bluetooth icon of your phone, click the map options into pairing mode. Click again the phone screen pull down to search Bluetooth device, upon the searched device come up as followings ID – your APP and phone connection is completed and works now.



无 SIM 卡

17:57

Car Finder

Paired devices

Car Finder

Not connected

9CD44AD4-BD3B-F544-B6BD-7C3B08634902

New devices

Car Finder

69FC782E-750D-C03A-5A9A-B7F3E183A9D0

Click the handset makes it into searching mode

无 SIM 卡

18:34

Car Finder

Paired devices

Car Finder

Not connected

9CD44AD4-BD3B-F544-B6BD-7C3B08634902

Car Finder

Connected

69FC782E-750D-C03A-5A9A-B7F3E183A9D0

New devices

版本/修改状态

Version/Changes: A/0

页次

Pages: 3/7

此资料中的全部信息是

華聯電電子(深圳)有限公司

的智慧財產。請保密併遵守相關的保密協議。未經同意擅自流傳或拷貝者，我們將依法追述不法使用者。

All information, and any attachments hereby, contain legally privileged and/or confidential information. It is the property of

MegaTrend Electronics Co., Ltd.

Unless it's agreed by MegaTrend Electronics Co., Ltd, we reserve the legal rights against any dissemination, distribution, copying and use of the information contained.

類別: Type	<b>BLE301i (BTA-065EX) User Manual</b> <b>MindMobile 3-in-1 Bluetooth Car Charger</b>	文件編號: Doc. #	<b>MT/WD02-20-113</b>
-------------	--	-----------------	-----------------------

8. Back to the Map, when BLE301i with power off about 30 sec. , APP will make the records of the position before BLE301i is power off. Red pin is where your car is parking. At this time, red pin will stay at current position (BLE301i plug in cigarette lighter socket in vehicle) is where your car's position. You can search the car parking position next week by looking at the red pin position of the Map.



類別: Type	<b>BLE301i (BTA-065EX) User Manual</b> <b>MindMobile 3-in-1 Bluetooth Car Charger</b>	文件編號: Doc. #	<b>MT/WD02-20-113</b>
-------------	--	-----------------	-----------------------

## 9. LED indication and sound alert

BLE301i condition	LED indication	Sound alert (*beep)
Power Off	Red and Green LED both off.	---
Power On	Red LED flashes fast	
Pairing mode	Red LED flashes fast	
Connection mode	Green LED is on	1 Beep
Disconnection mode	Red LED flashes fast	1 Beep

## 10. Buttons and operation

Buttons	Function	Before Operation	Operaton	Sound alert (*beep)
	Power On	Power Off	Power on/Plug in BLE301i	
	Power Off	Power On	Power Off/Remove BLE301i	
	Pairing mode	Power On	Power On and enter searching mode.	

### 4. Charging Conditions:

#### 1. Output Voltage/Current(Iout)

$V_{out}=5.0\pm0.25V$        $I_{out} = 1000\text{ mA}$

- Ripple Voltage (mVp-p) : Full load,the ripple voltage should less than 150 mVp-p. Power on the oscilloscope it's showing 20MHZ.
- Input over current protection: Plug in the positive and negative properly, the fuse will burn out protection when short circuit over-loading.

版本/修改狀態 Version/Changes: A/0 頁次 Pages: 5/7

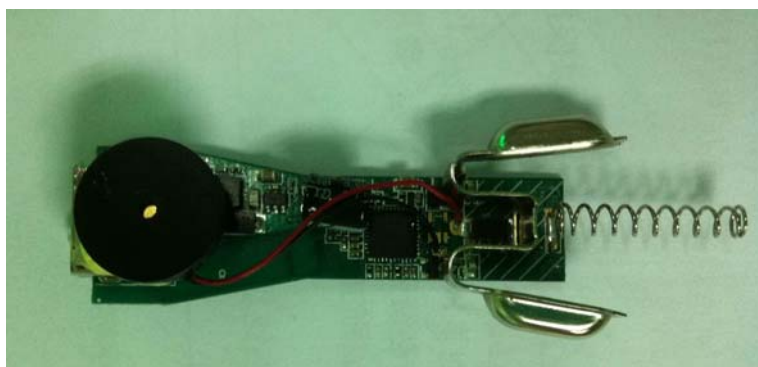
此資料中的全部信息是華聯電電子(深圳)有限公司的智慧財產。請保密併遵守相關的保密協議。未經同意擅自流傳或拷貝者，我們將依法追述不法使用者。  
All information, and any attachments hereby, contain legally privileged and/or confidential information. It is the property of MegaTrend Electronics Co., Ltd. Unless it's agreed by MegaTrend Electronics Co., Ltd, we reserve the legal rights against any dissemination, distribution, copying and use of the information contained.



類別: Type	<b>BLE301i (BTA-065EX) User Manual</b> <b>MindMobile 3-in-1 Bluetooth Car Charger</b>	文件編號: Doc. #	<b>MT/WD02-20-113</b>
-------------	--	-----------------	-----------------------

4. Input over voltage protection: When there's input voltage at 24V, the output voltage in normal loading but less 5.2V. The housing shouldn't with shape deformation, smoke or melted condition.
5. Short circuit protection: Any condition when output short circuit with output current less than 1.5A, the BLE301i will have output short which won't bring over-heat, smoke or melted condition. When you remove the short circuit. The product could work normally.
6. Surface temperature of working: Any exposed housing surface outer temperature shouldn't more than 75℃ (Ambient Temperature 25 ±2℃) - the max. housing temperature.

5. Hardware (PCB illustration):



<Front>



<Back>

類別: Type	<b>BLE301i (BTA-065EX) User Manual</b> <b>MindMobile 3-in-1 Bluetooth Car Charger</b>	文件編號: Doc. #	<b>MT/WD02-20-113</b>
-------------	--	-----------------	-----------------------

IC Note : Cet appareil est conforme à la Partie 15 des règlements de la FCC et aux normes RSS de l'Industrie du Canada. Son fonctionnement est soumis aux deux conditions suivantes: (1) cet appareil ne doit pas causer des interférences nuisibles, et (2) cet appareil doit accepter toute interférence reçue, y compris les interférences qui peuvent provoquer un fonctionnement indésirable.

Le fabricant n'est pas responsable des toutes interférences radio ou télévision causées par des modifications non autorisées apportées à cet appareil. De telles modifications peuvent empêcher l'utilisateur d'utiliser l'appareil.

**FCC and IC Note:**

This device complies with Part 15 of the FCC rules and Industry Canada license-exempt RSS standard(s). Operation is subject to the following two conditions: (1) this device may not cause harmful interference, and (2) this device must accept any interference received, including interference that may cause undesired operation.

The manufacturer is not responsible for any radio or TV interference caused by unauthorized modifications or change to this equipment. Such modifications or change could void the user's authority to operate the equipment.