



Wi-Fi Hi-Fi Speaker + 300M Smart Router

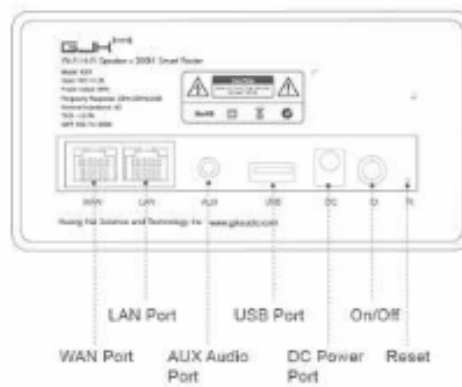
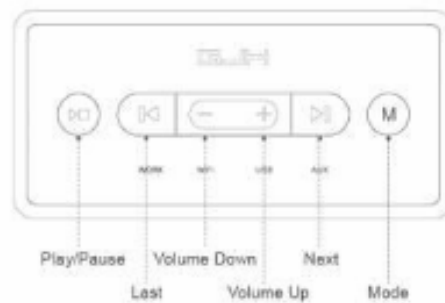
User Manual

Product Overview

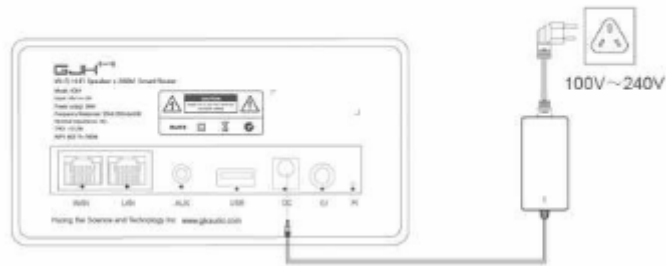
1 Package contents



2 Hardware interface



3 Product installation



4 Specifications

Name	Wi-Fi Hi-Fi Speaker
Model	K001
Input	18V ---2A
Power Dissipation	36W
Effect Range	20Hz-20KHz±3dB
Impedance	4Ω
Distortion	<2%
Wi-Fi	802.11b/n/g 300M

Guide for Android Users

1 Connect Wi-Fi to "GJK_Speaker_0001".



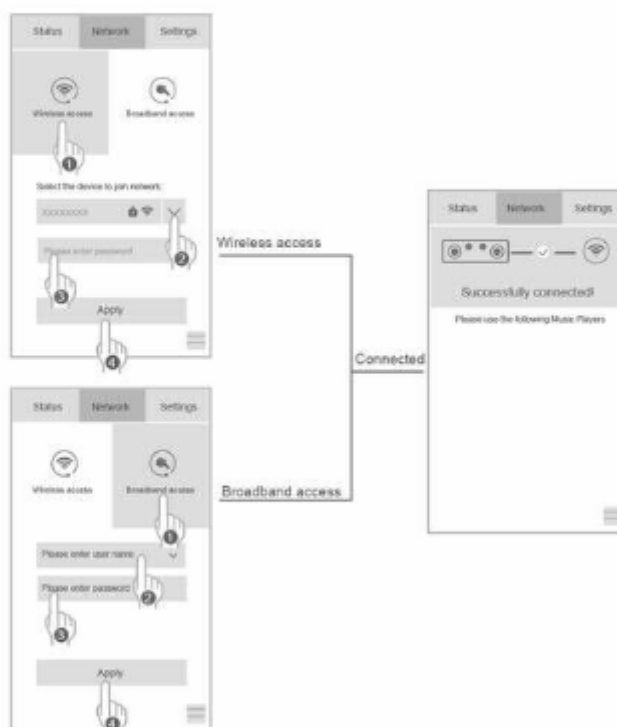
2 Play local music

Your device or your music player must support  DLNA protocol in order to send your music to the speaker.



3 — INTERNET Network settings (optional)

If you need to join a network for Internet access, visit IP address 192.168.169.1 from your mobile browser.



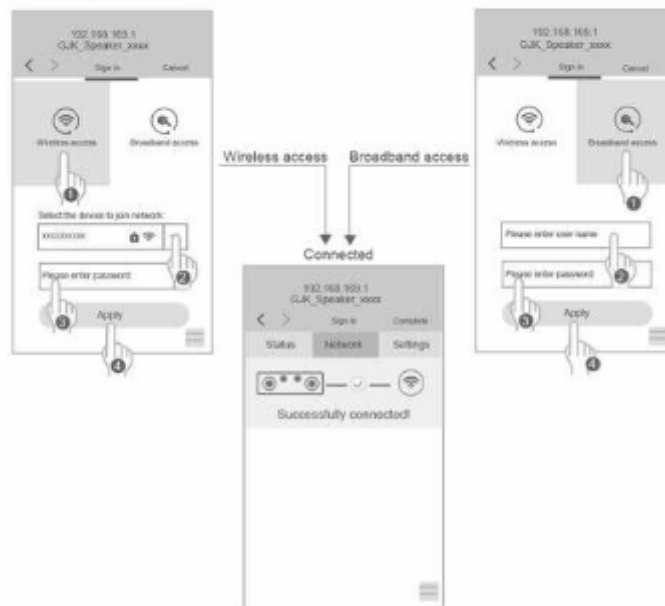
Guide for iOS Users

1 Connect Wi-Fi to "GJK_Speaker_xxxx".



2 NETWORK Internet Network settings (optional)

If you need to join a network for Internet access, visit IP address 192.168.169.1 from your mobile browser.



Guide for Android Users

- 1    Connect Wi-Fi to "GJK_Speaker_xxxx".



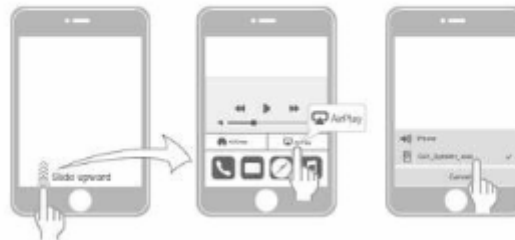
- 2  Play local music

Your device or your music player must support  DLNA protocol in order to send your music to the speaker.



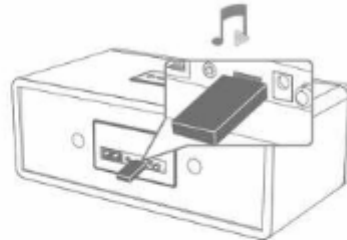
- 3  Music play

Devices that run iOS 4.2 or higher version support AIRPLAY protocol.



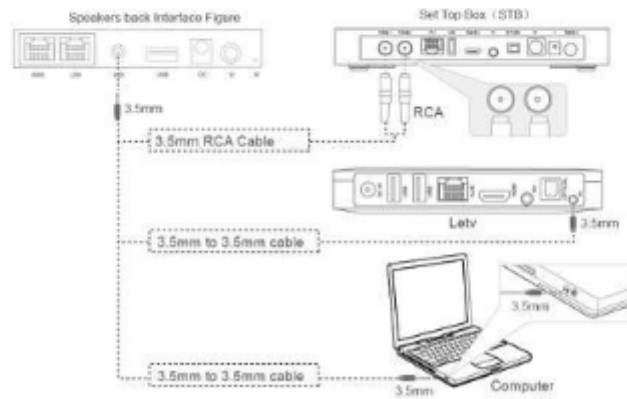
USB Operating Guide

1 USB music play



AUX Operating Guide


1 Speaker connection with other modes



Note: --- an additional 3.5mm to 3.5mm cable is required.

Network settings

1 Broadband connection (insert the network cable)

Scan the QR code  or enter IP address 192.168.169.1 a mobile browser

to enter the setting page.

1 Account connection(ADSL)

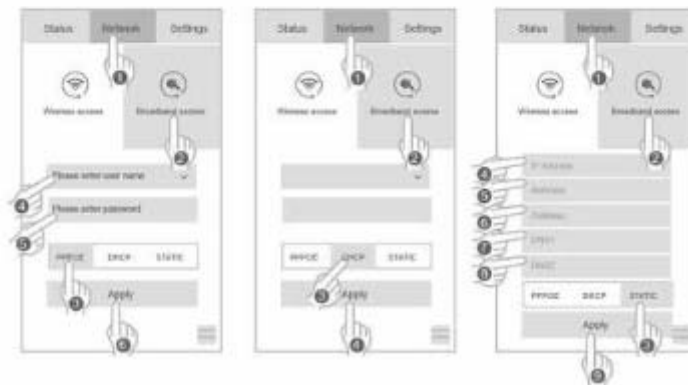
Select "Network--Broadband access--PPPOE", then input your broadband account as well as the password, and click "Apply".

2 Non-account connection

If you do not have an account and password, the network connection will be automatically connected after connecting to the network cable.

3 Static IP

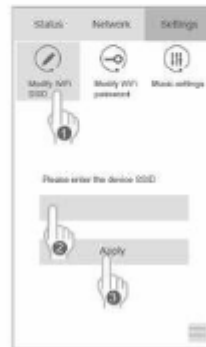
Click "Network--Broadband access--STATIC", in the page of static IP mode, input the IP address, gateway and other information provided by ISP, and click "Apply".



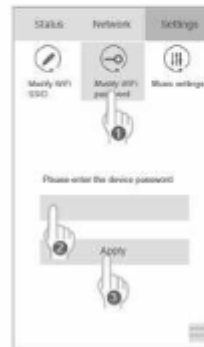
Changing Device Name, password, or Music Settings

1 Changing the device name, password, or music settings

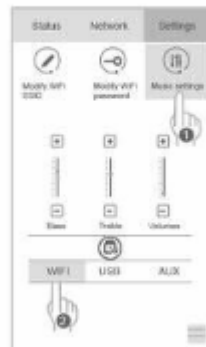
Visit IP address 192.168.169.1 from your mobile browser.



changing the device name



changing the password



changing the music settings

FCC Information and Copyright

This equipment has been tested and found to comply with the limits for a Class B digital device, pursuant to part 15 of the FCC Rules.

These limits are designed to provide reasonable protection against harmful interference in a residential installation. This equipment generates,

uses and can radiate radio frequency energy and, if not installed and used in accordance with the instructions, may cause harmful interference

to radio communications. However, there is no guarantee that interference will not occur in a particular installation. If this equipment does

cause harmful interference to radio or television reception, which can be determined by turning the equipment off and on, the user is

encouraged to try to correct the interference by one or more of the following measures:

- Reorient or relocate the receiving antenna.
- Increase the separation between the equipment and receiver.
- Connect the equipment into an outlet on a circuit different from that to which the receiver is connected.
- Consult the dealer or an experienced radio/TV technician for help.

This device complies with part 15 of the FCC Rules. Operation is subject to the following two conditions:

- (1) This device may not cause harmful interference, and
- (2) this device must accept any interference received, including interference that may cause undesired operation.

changes or modifications not expressly approved by the party responsible for compliance could void the user's authority to operate the equipment.

This equipment complies with FCC radiation exposure limits set forth for an uncontrolled environment. This equipment should be installed and operated with minimum distance 20cm between the radiator & your body. This transmitter must not be co-located or operating in conjunction with any other antenna or transmitter.



website



settings



www.gjkaudio.com



customer@gjkaudio.com

Huong Hai Science and Technology Inc.

221 Bayshore Blvd. San Francisco, CA 94124