



Shenzhen CTL Testing Technology Co., Ltd.
Tel: +86-755-89486194 E-mail: ctl@ctl-lab.com

TEST REPORT

47 CFR FCC Part 15 Subpart C 15.231(e)

Report Reference No.....: CTL2204207031-WF

Compiled by:
(position+printed
name+signature)

Happy Guo
(File administrators)

Tested by:
(position+printed
name+signature)

Gary Gao
(Test Engineer)

Approved by:
(position+printed
name+signature)

Ivan Xie
(Manager)



Product Name.....: Wireless Indoor Outdoor Thermometer and Clock with Remote
Sensor
Model/Type reference.....: GP1730 (5293168)
List Model(s).....: GP1731(5293169)
Trade Mark.....: N/A
FCC ID.....: 2ACW8-GP1730

Applicant's name.....: FUZHOU SUNNY ELECTRONIC CO.,LTD.
Address of applicant.....: BLDG 52,JUYUANZHOU INDUSTRIAL GARDEN,618 JINSHAN
ROAD,FUZHOU,FUJIAN,CHINA.

Test Firm.....: Shenzhen CTL Testing Technology Co., Ltd.
Address of Test Firm.....: Floor 1-A, Baisha Technology Park, No.3011, Shahexi Road,
Nanshan District, Shenzhen, China 518055

Test specification.....:
Standard.....: 47 CFR FCC Part 15 Subpart C 15.231(e)
TRF Originator.....: Shenzhen CTL Testing Technology Co., Ltd.
Master TRF.....: Dated 2011-01

Date of receipt of test item.....: Apr. 22, 2022
Date of Test Date.....: Apr. 22, 2022-May 09, 2022
Data of Issue.....: May 09, 2022
Result.....: Pass

Shenzhen CTL Testing Technology Co., Ltd. All rights reserved.

This publication may be reproduced in whole or in part for non-commercial purposes as long as the Shenzhen CTL Testing Technology Co., Ltd. is acknowledged as copyright owner and source of the material. Shenzhen CTL Testing Technology Co., Ltd. takes no responsibility for and will not assume liability for damages resulting from the reader's interpretation of the reproduced material due to its placement and context.

TEST REPORT

Test Report No. : CTL2204207031-WF	May 09, 2022 Date of issue
---	-------------------------------

Equipment under Test : Wireless Indoor Outdoor Thermometer and Clock with Remote Sensor

Sample No. CTL220420703-1-S001

Model /Type : GP1730 (5293168)

Listed Models : GP1731(5293169)

Applicant : FUZHOU SUNNY ELECTRONIC CO.,LTD.

Address : BLDG 52,JUYUANZHOU INDUSTRIAL GARDEN,618
JINSHAN ROAD,FUZHOU,FUJIAN,CHINA.

Manufacturer : FUZHOU SUNNY ELECTRONIC CO.,LTD.

Address : BLDG 52,JUYUANZHOU INDUSTRIAL GARDEN,618
JINSHAN ROAD,FUZHOU,FUJIAN,CHINA.

Test result	Pass *
--------------------	---------------

* In the configuration tested, the EUT complied with the standards specified page 5.

The test results presented in this report relate only to the object tested.

This report shall not be reproduced, except in full, without the written approval of the issuing testing laboratory.

** Modified History **

[illegible]

Table of Contents**Page**

1. SUMMARY	5
1.1. TEST STANDARDS	5
1.2. TEST DESCRIPTION	5
1.3. TEST FACILITY	6
1.4. STATEMENT OF THE MEASUREMENT UNCERTAINTY	6
2. GENERAL INFORMATION	8
2.1. ENVIRONMENTAL CONDITIONS	8
2.2. GENERAL DESCRIPTION OF EUT	8
2.3. EQUIPMENTS USED DURING THE TEST	8
2.4. RELATED SUBMITTAL(S) / GRANT (S)	9
2.5. MODIFICATIONS	9
3. TEST CONDITIONS AND RESULTS	10
3.1. CONDUCTED EMISSION (AC MAIN)	10
3.2. RADIATED EMISSION	11
3.3. 20dB BANDWIDTH	16
3.4. DURATION OF TRANSMISSION AND SILENT PERIOD	17
3.5. ANTENNA REQUIREMENT	19
4. TEST SETUP PHOTOS OF THE EUT	20
5. EXTERNAL AND INTERNAL PHOTOS OF THE EUT	21

1. SUMMARY

1.1. Test Standards

The tests were performed according to following standards:

[FCC Rules Part 15.231:](#) Periodic operation in the band 40.66-40.70 MHz and above 70 MHz.

[ANSI C63.10:2013](#) : American National Standard for Testing Unlicensed Wireless Devices

1.2. Test Description

FCC and IC Requirements		
FCC Part 15.207	Conducted Emission	N/A
FCC Part 15.231(e)	Duration of Transmission and Silent Period	PASS
FCC Part 15.231(e)	Electric Field Strength of Fundamental Emission	PASS
FCC Part 15.205 & 15.209 & 15.231(e)	Electric Field Strength of Spurious Emission	PASS
FCC Part 15.231(c)	-20dB bandwidth	PASS

Remark: The measurement uncertainty is not included in the test result.

1.3. Test Facility

1.3.1 Address of the test laboratory

Shenzhen CTL Testing Technology Co., Ltd.

Floor 1-A, Baisha Technology Park, No. 3011, Shahexi Road, Nanshan, Shenzhen 518055 China

There is one 3m semi-anechoic chamber and two line conducted labs for final test. The Test Sites meet the requirements in documents ANSI C63.4 and CISPR 22/EN 55022 requirements.

1.3.2 Laboratory accreditation

The test facility is recognized, certified, or accredited by the following organizations:

CNAS-Lab Code: L7497

Shenzhen CTL Testing Technology Co., Ltd. has been assessed and proved to be in compliance with CNAS-CL01 Accreditation Criteria for Testing and Calibration Laboratories (identical to ISO/IEC 17025: 2005 General Requirements) for the Competence of Testing and Calibration Laboratories.

A2LA-Lab Cert. No. 4343.01

Shenzhen CTL Testing Technology Co., Ltd, EMC Laboratory has been accredited by A2LA for technical competence in the field of electrical testing, and proved to be in compliance with ISO/IEC 17025: 2005 General Requirements for the Competence of Testing and Calibration Laboratories and any additional program requirements in the identified field of testing.

IC Registration No.: 9618B

CAB identifier: CN0041

The 3m alternate test site of Shenzhen CTL Testing Technology Co., Ltd. EMC Laboratory has been registered by Innovation, Science and Economic Development Canada to test to Canadian radio equipment requirements with Registration No.: 9618B on Jan. 22, 2019.

FCC-Registration No.: 399832

Designation No.: CN1216

Shenzhen CTL Testing Technology Co., Ltd. EMC Laboratory has been registered and fully described in a report filed with the (FCC) Federal Communications Commission. The acceptance letter from the FCC is maintained in our files. Registration 399832, December 08, 2017.

1.4. Statement of the measurement uncertainty

The data and results referenced in this document are true and accurate. The reader is cautioned that there may be errors within the calibration limits of the equipment and facilities. The measurement uncertainty was calculated for all measurements listed in this test report acc. to CISPR 16 - 4 "Specification for radio disturbance and immunity measuring apparatus and methods – Part 4: Uncertainty in EMC Measurements" and is documented in the Shenzhen CTL Testing Technology Co., Ltd. quality system acc. to DIN EN ISO/IEC 17025. Furthermore, component and process variability of devices similar to that tested may result in additional deviation. The manufacturer has the sole responsibility of continued compliance of the device.

Hereafter the best measurement capability for CTL laboratory is reported:

Test	Measurement Uncertainty	Notes
Transmitter power conducted	± 0.57 dB	(1)
Transmitter power Radiated	± 2.20 dB	(1)
Conducted spurious emission 9KHz-40 GHz	± 2.20 dB	(1)
Occupied Bandwidth	± 0.01 ppm	(1)

Radiated Emission 30~1000MHz	$\pm 4.10\text{dB}$	(1)
Radiated Emission Above 1GHz	$\pm 4.32\text{dB}$	(1)
Conducted Disturbance 0.15~30MHz	$\pm 3.20\text{dB}$	(1)

(1) This uncertainty represents an expanded uncertainty expressed at approximately the 95%

(2) confidence level using a coverage factor of $k=2$.

2. GENERAL INFORMATION

2.1. Environmental conditions

During the measurement the environmental conditions were within the listed ranges:

Normal Temperature:	25°C
Relative Humidity:	55 %
Air Pressure:	101 kPa

2.2. General Description of EUT

Product Name:	Wireless Indoor Outdoor Thermometer and Clock with Remote Sensor
Model/Type reference:	GP1730 (5293168)
Power supply:	DC 3.0V from Battery
Modulation:	ASK
Operation frequency:	433.92MHz
Channel number:	1
Antenna type:	Spring Antenna
Antenna gain:	4 dBi

Note: For more details, please refer to the user's manual of the EUT.

2.3. Equipments Used during the Test

Test Equipment	Manufacturer	Model No.	Serial No.	Calibration Date	Calibration Due Date
LISN	R&S	ESH2-Z5	860014/010	2021/05/10	2022/05/09
Bilog Antenna	Sunol Sciences Corp.	JB1	A061713	2021/05/23	2024/05/22
EMI Test Receiver	R&S	ESCI	1166.5950.03	2021/05/23	2022/05/22
Spectrum Analyzer	Agilent	E4407B	MY41440676	2021/05/14	2022/05/13
Spectrum Analyzer	Agilent	N9020	US46220290	2021/05/14	2022/05/13
Controller	EM Electronics	EM 1000	060859	2021/05/21	2022/05/20
Horn Antenna	Sunol Sciences Corp.	DRH-118	A062013	2020/09/22	2023/09/21
Active Loop Antenna	Da Ze	ZN30900A	/	2021/05/13	2024/05/12
Amplifier	Agilent	8449B	3008A02306	2021/05/10	2022/05/09
Amplifier	Agilent	8447D	2944A10176	2021/05/10	2022/05/09
Temperature/Humidity Meter	Gangxing	CTH-608	02	2021/05/11	2022/05/10
High-Pass Filter	micro-tranics	HPM50108	G174	2021/06/15	2022/06/14
High-Pass Filter	micro-tranics	HPM50111	G142	2021/06/15	2022/06/14
Coaxial Cables	HUBER+SUHNER	SUCOFLEX 104PEA-10M	10m	2021/06/15	2022/06/14

Coaxial Cables	HUBER+SUHN ER	SUCOFLEX 104PEA-3M	3m	2021/06/15	2022/06/14
Coaxial Cables	HUBER+SUHN ER	SUCOFLEX 104PEA-3M	3m	2021/06/15	2022/06/14
RF Cable	Megalon	RF-A303	N/A	2021/06/15	2022/06/14

The calibration interval was one year

2.4. Related Submittal(s) / Grant (s)

This submittal(s) (test report) is intended to comply with Section 15.231 of the FCC Part 15, Subpart C Rules.

2.5. Modifications

No modifications were implemented to meet testing criteria.

3. TEST CONDITIONS AND RESULTS

3.1. Conducted Emission (AC Main)

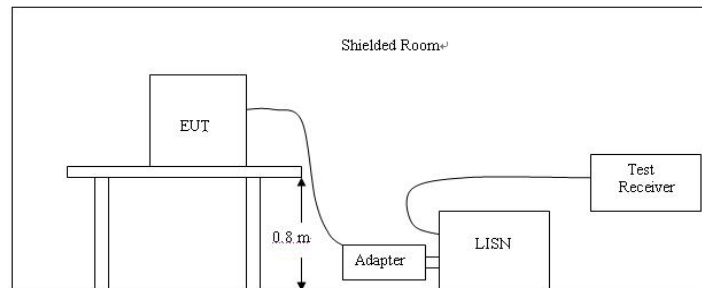
LIMIT

FCC CFR Title 47 Part 15 Subpart C Section 15.207

Frequency range (MHz)	Limit (dBuV)	
	Quasi-peak	Average
0.15-0.5	66 to 56*	56 to 46*
0.5-5	56	46
5-30	60	50

* Decreases with the logarithm of the frequency.

TEST CONFIGURATION



TEST PROCEDURE

1. The equipment was set up as per the test configuration to simulate typical actual usage per the user's manual. The EUT is a flood stand system; a wooden table with a height of 0.1 meters is used and is placed on the ground plane as per ANSI C63.10-2013.
2. Support equipment, if needed, was placed as per ANSI C63.10-2013
3. All I/O cables were positioned to simulate typical actual usage as per ANSI C63.10-2013
4. If a EUT received DC power from the USB Port of Notebook PC, the PC's adapter received AC120V/60Hz power through a Line Impedance Stabilization Network (LISN) which supplied power source and was grounded to the ground plane.
5. All support equipments received AC power from a second LISN, if any.
6. The EUT test program was started. Emissions were measured on each current carrying line of the EUT using a spectrum Analyzer / Receiver connected to the LISN powering the EUT. The LISN has two monitoring points: Line 1 (Hot Side) and Line 2 (Neutral Side). Two scans were taken: one with Line 1 connected to Analyzer / Receiver and Line 2 connected to a 50 ohm load; the second scan had Line 1 connected to a 50 ohm load and Line 2 connected to the Analyzer / Receiver.
7. Analyzer / Receiver scanned from 150 KHz to 30MHz for emissions in each of the test modes.
8. During the above scans, the emissions were maximized by cable manipulation.

TEST RESULTS

Not applicable for device which is battery supply.

3.2. Radiated Emission

Limit

For intentional device, according to 15.209(a) the general requirement of field strength of radiated emission from intentional radiators at a distance of 3 meters shall not exceed the following table.

Frequency (MHz)	Distance (Meters)	Radiated (dBμV/m)	Radiated (μV/m)
0.009-0.49	3	$20\log(2400/F(\text{KHz}))+40\log(300/3)$	$2400/F(\text{KHz})$
0.49-1.705	3	$20\log(24000/F(\text{KHz}))+40\log(30/3)$	$24000/F(\text{KHz})$
1.705-30	3	$20\log(30)+40\log(30/3)$	30
30-88	3	40.0	100
88-216	3	43.5	150
216-960	3	46.0	200
Above 960	3	54.0	500

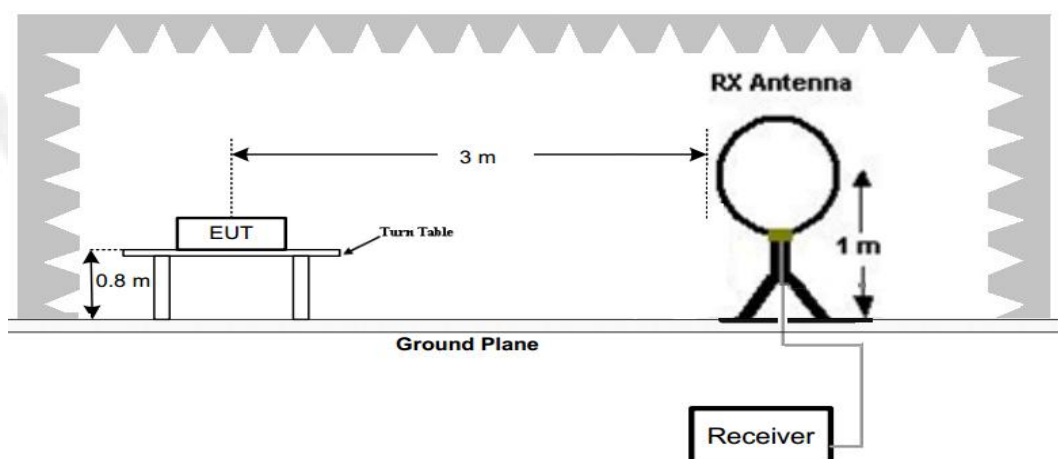
In addition to the provisions of 15.231(e), the field strength of emissions from intentional radiators operated under this section shall not exceed the following:

Fundamental frequency (MHz)	Field Strength of Fundamental (microvolt/meter)	Field Strength of spurious emissions (microvolt/meter)
40.66-40.70	1,000	100
70-130	500	50
130-174	500 to 1,500	50 to 150
174-260	1,500	150
260-470	1,500 to 5,000	150 to 500
Above 470	5,000	500

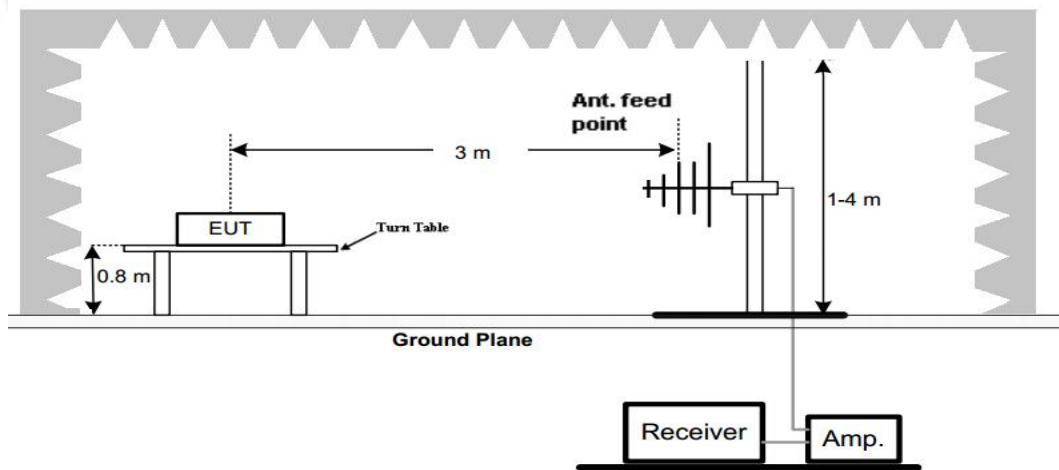
[Where F is the frequency in MHz, the formulas for calculating the maximum permitted fundamental field strengths are as follows: for the band 260-470 MHz, $\mu\text{V/m}$ at 3 meters $= 41.6667(F) - 7083.3333$. The maximum permitted unwanted emission level is 20 dB below the maximum permitted fundamental level.]

TEST CONFIGURATION

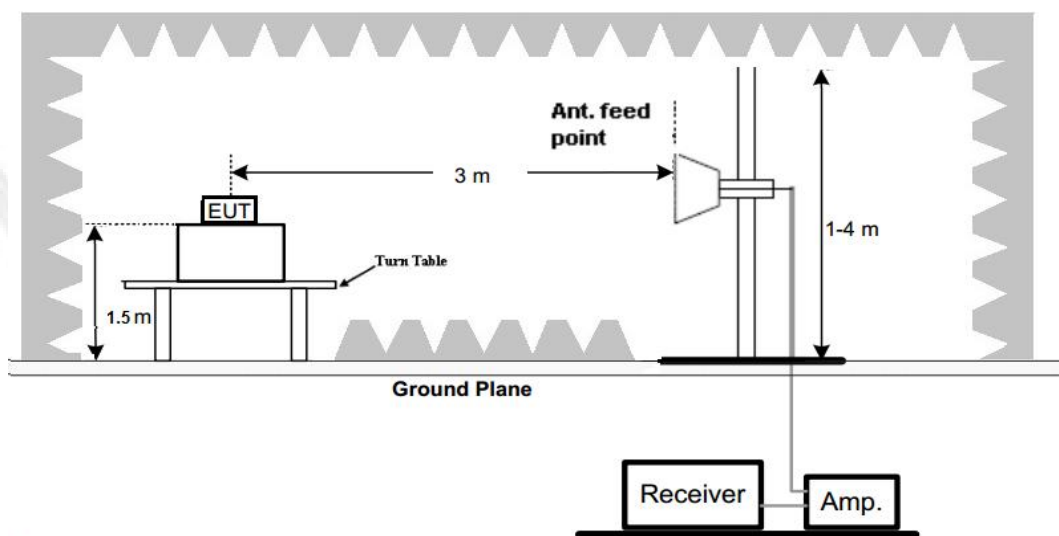
(A) Radiated Emission Test Set-Up, Frequency Below 30MHz



(B) Radiated Emission Test Set-Up, Frequency below 1000MHz



(C) Radiated Emission Test Set-Up, Frequency above 1000MHz



Test Procedure

1. Below 1GHz measurement the EUT is placed on a turntable which is 0.8m above ground plane, and above 1GHz measurement EUT was placed on a low permittivity and low loss tangent turn table which is 1.5m above ground plane.
2. Maximum procedure was performed by raising the receiving antenna from 1m to 4m and rotating the turn table from 0° to 360° to acquire the highest emissions from EUT
3. And also, each emission was to be maximized by changing the polarization of receiving antenna both horizontal and vertical.
4. Repeat above procedures until all frequency measurements have been completed.

TEST RESULTS

The emissions from 30MHz to 5GHz are measured peak and average level, below 1 GHz measured QP level, detailed test data please see below. Besides, we tested 3 directions and recorded the worst data.

Emission Styles	Frequency (MHz)	PK Level (dBuV/m)	AV Factor (dB/m)	AV Level (dBuV/m)	Limit (dBuV/m)	Margin (dB)	Direction (H/V)
Fundamental	433.92	85.23	-9.90	75.33	92.00	16.67	H
Fundamental	433.92	75.64	-9.90	65.74	72.00	6.26	H
Spurious	852.48	57.18	-9.90	47.28	72.00	24.72	H
Harmonics	867.84	52.36	-9.90	42.46	72.00	29.54	H
Harmonics	1031.62	48.62	-9.90	38.72	72.00	33.28	H
Harmonics	1735.68	40.23	-9.90	30.33	72.00	41.67	H
--	--	--	--		--		--
Fundamental	433.92	83.47	-9.90	73.57	92.00	18.43	V
Fundamental	433.92	72.19	-9.90	62.29	72.00	9.71	V
Spurious	705.61	56.32	-9.90	46.42	72.00	25.58	V
Harmonics	867.84	50.08	-9.90	40.18	72.00	31.82	V
Harmonics	1035.62	50.26	-9.90	40.36	72.00	31.64	V
Harmonics	1735.68	36.56	-9.90	26.66	72.00	45.34	V
--	--	--	--	--	--	--	--

Note:

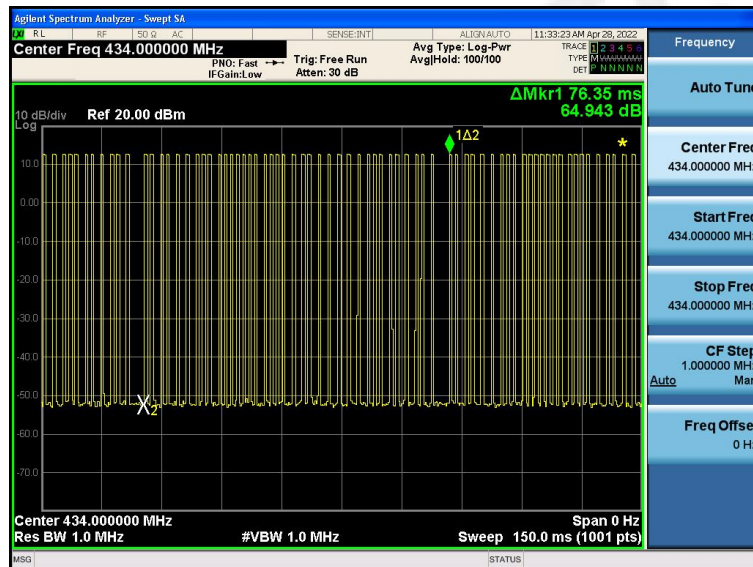
1. All Readings are Peak Value
2. Correct Factor= Antenna Factor +Cable Loss- Amplifier Gain
3. Emission Level= Reading Level+Probe Factor +Cable Loss
4. AV Level (dBuV/m)= PK Level (dBuV/m)+ AV Factor(dB)
5. Margin = TrueValue – limit(if margin is minus means under limit)
6. a transmit cycle 75.42ms period found 0.5ms burst 38pcs, the Duty Cycle can calculate as below:

$$\text{Duty Cycle} = (0.6 \times 16) + (0.7 \times 21) / 76.35 = 0.32$$

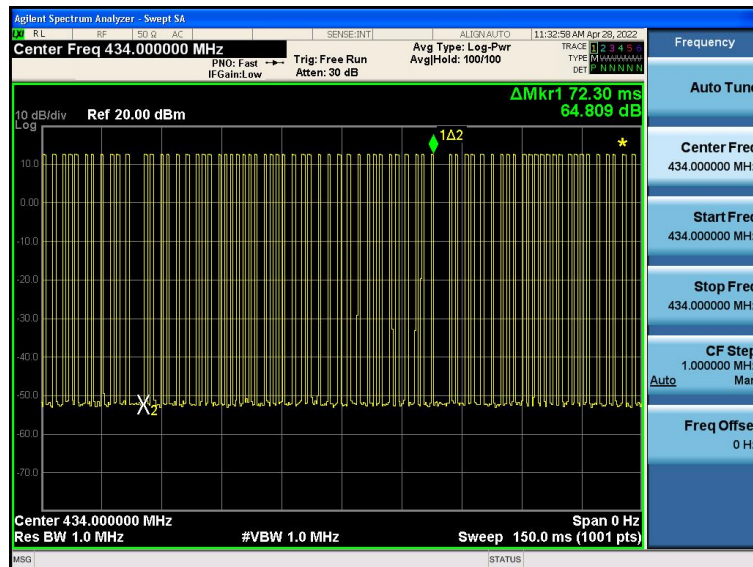
$$\text{AV Factor} = 20 \times \log(\text{Duty Cycle}) = 20 \times \log(0.32) = -9.90$$

(The plot of Duty Cycle See the follow page)

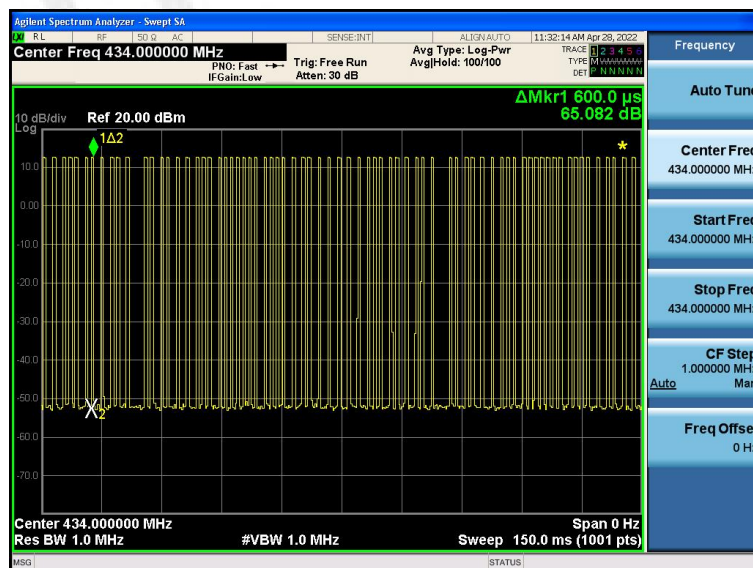
7. All the x/y/z orientation has been investigated, and only worst case is presented in this report.



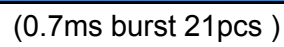
(Transmit cycle 76.35ms)



(Total Bursts in a transmit cycle 37 pcs)



(0.6ms burst 16pcs)

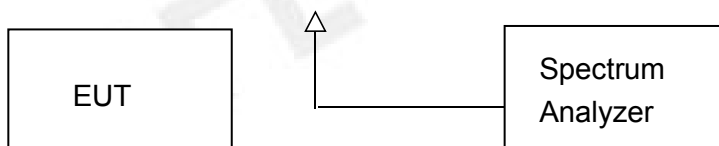


3.3. 20dB Bandwidth

Limit

According to 47 CFR 15.231(c) The bandwidth of the emission shall be no wider than 0.25% of the centre frequency for devices operating above 70MHz and below 900MHz. Bandwidth is determined at the points 20dB down from the modulated carrier.

Test Configuration



Test Procedure

The 20dB bandwidth and 99% bandwidth is measured with a spectrum analyzer connected via a receive antenna placed near the EUT while the EUT is operating in transmission mode.

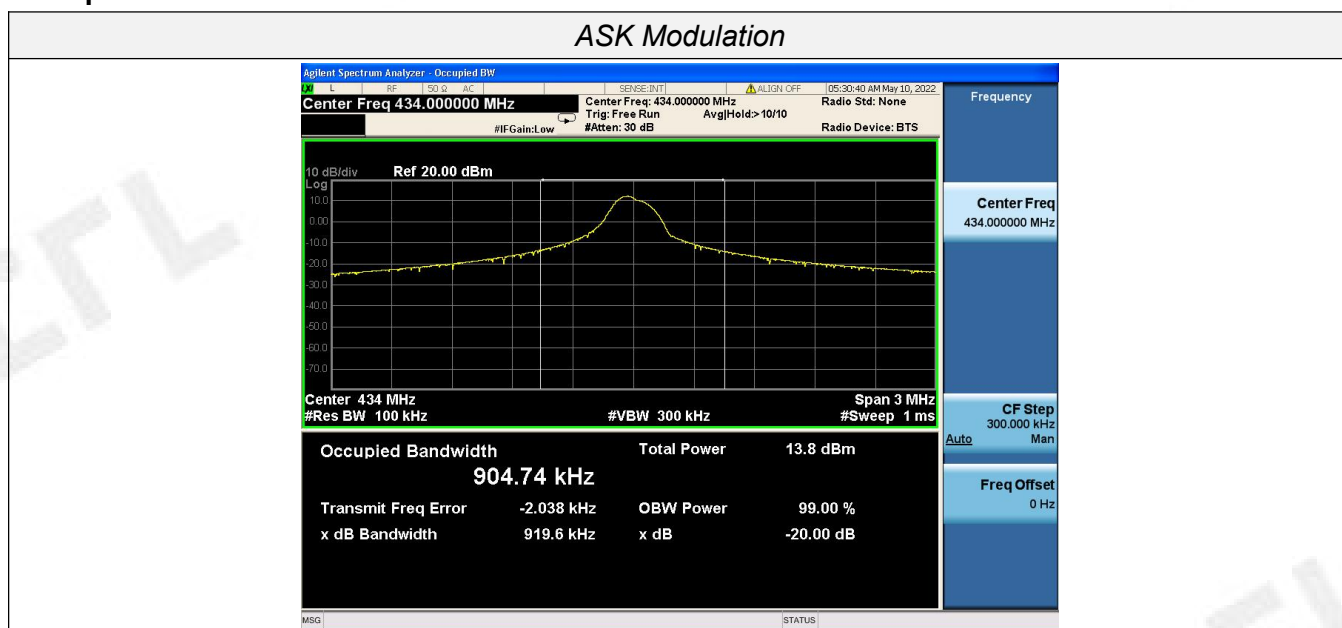
The 20dB bandwidth is defined as the total spectrum the power of which is higher than peak power minus 20dB.

The occupied bandwidth (OBW), that is the frequency bandwidth such that, below its lower and above its upper frequency limits, the mean powers radiated are each equal to 0.5 percent of the total mean power radiated by a given emission.

Test Results

Modulation	Channel Frequency (MHz)	99% OBW (KHz)	20dB bandwidth (KHz)	Limit (KHz)	Result
ASK	433.92	904.74	919.6	$0.25\% \times 433.92 = 1084.8$	Pass

Test plot as follows:

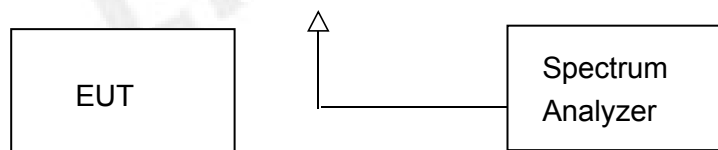


3.4. Duration of Transmission and Silent Period

Limit

Devices operated under the provisions of this paragraph shall be provided with a means for automatically limiting operation so that the duration of each transmission shall not be greater than one second and the silent period between transmissions shall be at least 30 times the duration of the transmission but in no case less than 10 seconds.

Test Configuration



Test Procedure

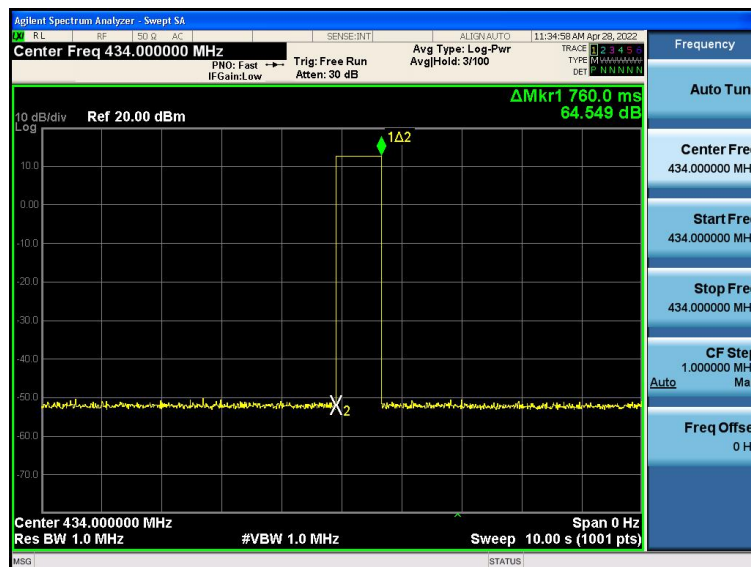
1. Set SPA Center Frequency = Fundamental frequency, RBW = 100 kHz, VBW = 300 kHz, Span = 0 Hz. Sweep time > 10 seconds.
2. Set EUT as normal operation and press Transmitter button.
3. Set SPA View. Delta Mark time.

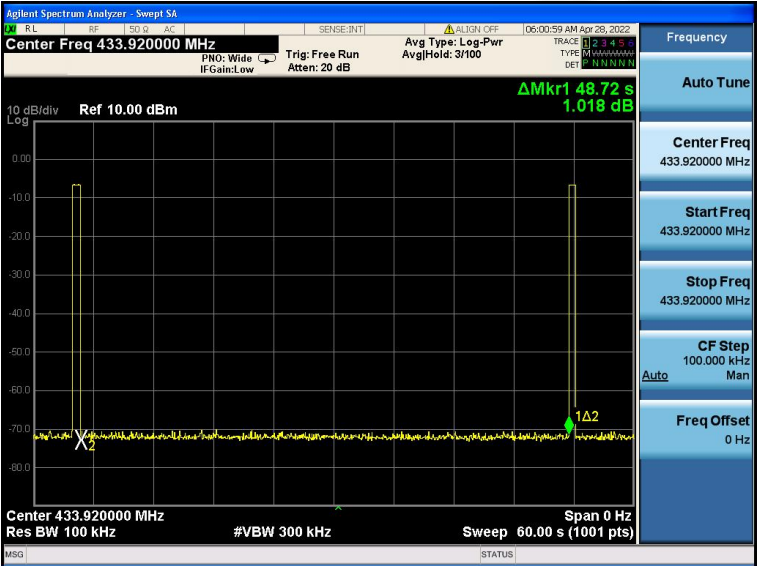
TEST RESULTS

duration of each transmission = 760 ms < 1 s PASS

Silent period between transmissions = 48.72 s > 10 s PASS

30 times the duration of the transmission = 22.8 s < 30.07 s PASS





3.5. Antenna Requirement

Standard Applicable

According to FCC Part 15C 15.203

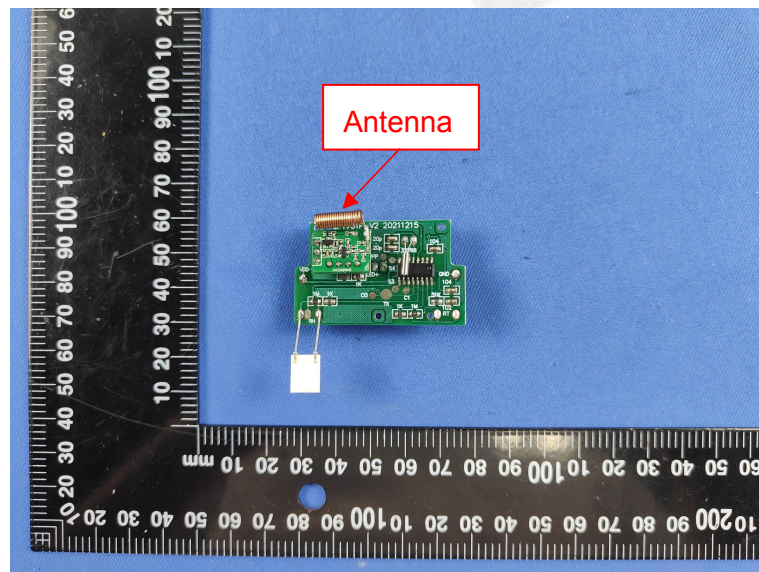
- a) An intentional radiator shall be de-signed to ensure that no antenna other than that furnished by the responsible party shall be used with the device.
- b) The manufacturer may design the unit so that a broken antenna can be replaced by the user, but the use of a standard antenna jack or electrical connector is prohibited.

Refer to statement below for compliance.

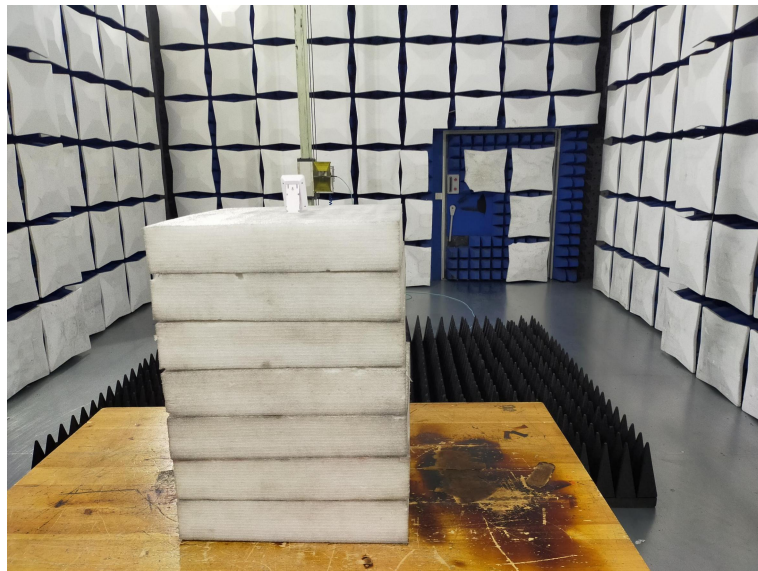
The manufacturer may design the unit so that the user can replace a broken antenna, but the use of a standard antenna jack or electrical connector is prohibited. Further, this requirement does not apply to intentional radiators that must be professionally installed.

Antenna Connected Construction

The antenna used in this product is an Copper wire Antenna, The directional gains of antenna used for transmitting is 4dBi.

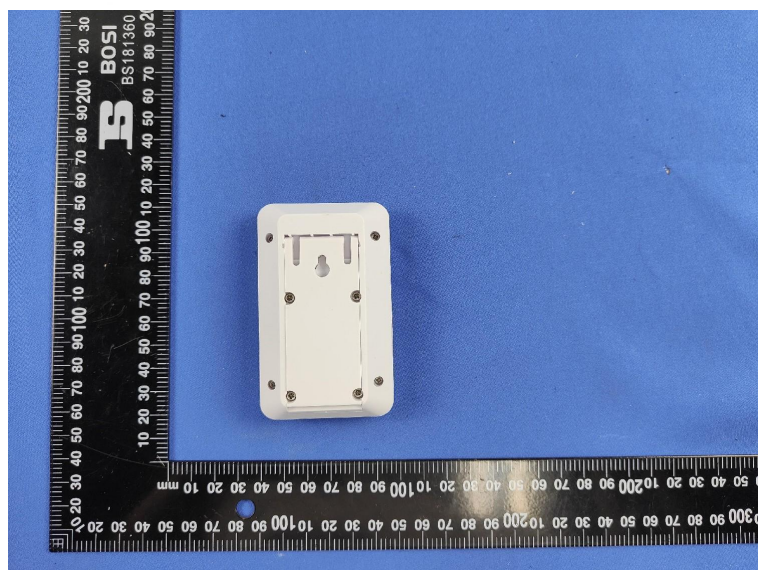
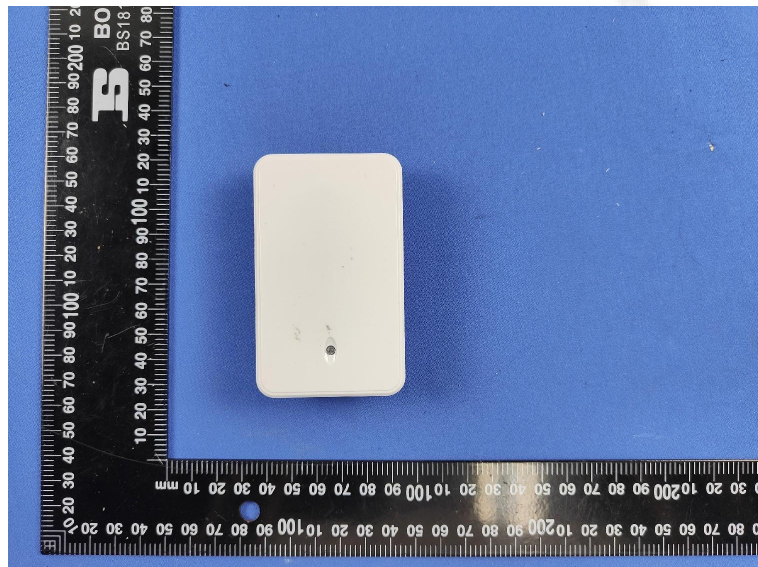
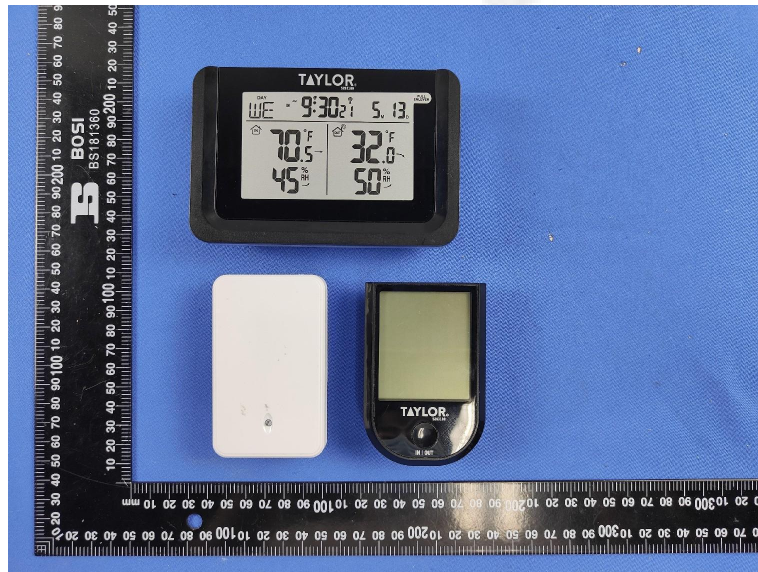


4. Test Setup Photos of the EUT



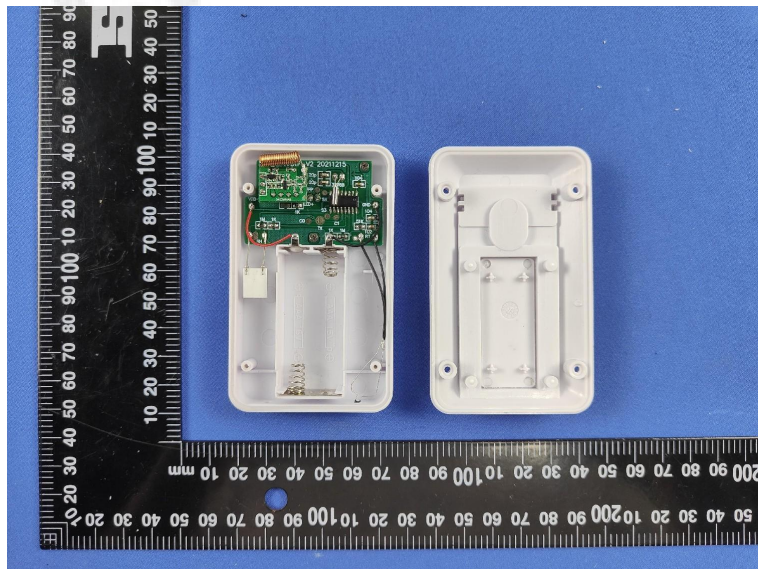
5. External and Internal Photos of the EUT

External Photos of EUT

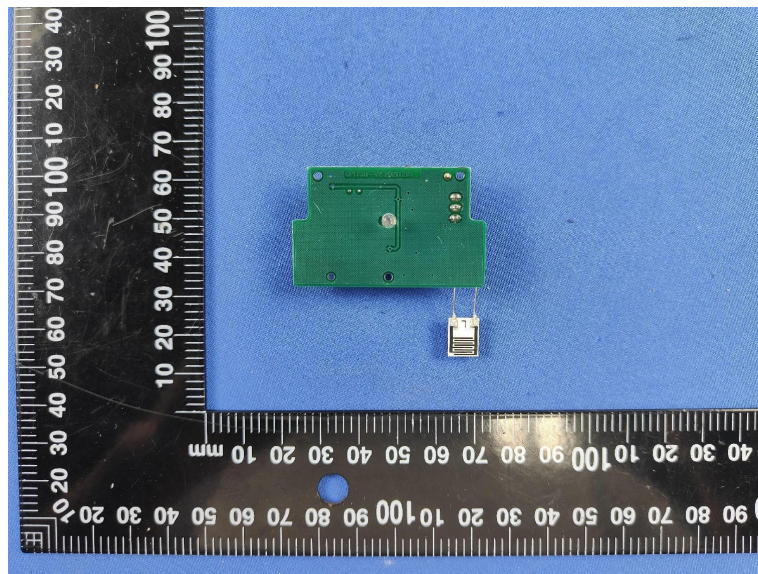
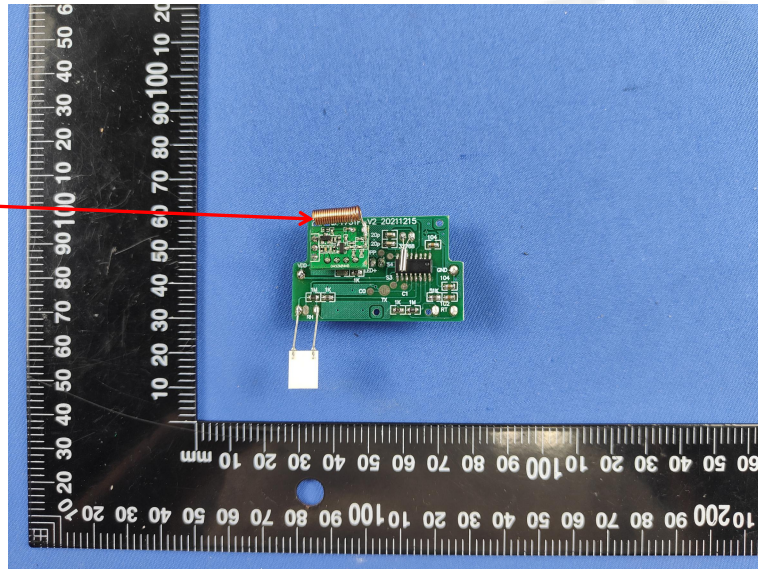




Internal Photos of EUT



Transmitter
antenna



***** End of Report *****