



Super Safe International Co., Ltd.

Wonderful life All in SSW2B

2.5inch HD WIFI Raid enclosure box

Model: SSW2B

User manual

En. Edition

CH. Patent no. 201420235712.7

All rights reserved

PATENT PRODUCT



Index

※System requirements-----	2
1. PC system requirements-----	2
2. HD support-----	2
3. The contents of the package-----	2
※The map of the hardware connection-----	3
※Function illustration-----	3
1. Panel description-----	3
2. Use the matters needing attention-----	3
3. The use of safety-----	3
※Q & A-----	3
※Instructions for use WiFi-----	4
※install MyAirDisk Pro(iOS)-----	9
※install MyAirDisk Pro(Android)-----	9

※System requirements

1. PC system request

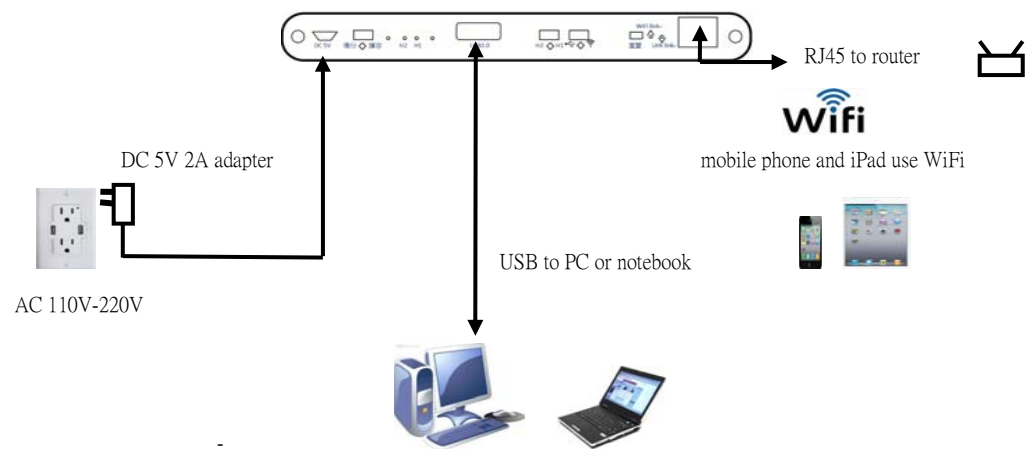
- * Windows 2K、XP、2003、Vista、Win7、Win8.
- * At least with Intel Pentium III CPU 500MHz, above 128MB RAM.
- * At least with Apple G4 CPU, above 128MB RAM.
- * Above Mac OS 10.4.

2. HD support

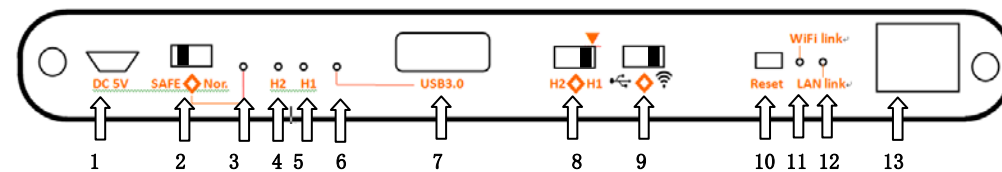
- * Support exFAT and FAT32 format.
- * The use of more than 2TB above the capacity of HD, the OS must be Window Vista and Window7.
- * Windows XP go to the Microsoft website to download a patch KB955704 for exFAT format.
- * Hard disk formatted exFAT see the Q&A: Q5

3. The contents of the package

- WiFi SSW2B SAFE DATA BOX × 1 (Not include HD)
- USB 3.0 Y type cable ×1
- DC5V 2A adapter ×1
- User manual ×1

※The map of the hardware connection※Function illustration

1. Panel description



- 1. DC 5V 2A power interface.
- 2. Mode switch: Safe mode is automatic backup of H1 to H2 hard disk.
Normal mode is individual access 1 or 2 hard disk.。
- 3. Mode switch' s Led indicator: safe mode is orange light
Normal mode is blue light.
- 4. H2: HD indicator: green light when the HD2 active.
- 5. H1: HD indicator: green light when the HD1 active.

- 6. USB2.0/3.0 indicator: Blue light when USB2.0 connected.
Orange light when USB3.0 connected.
 - 7. USB2.0/3.0 interface.
 - 8. H1/H2 HD switch: see 2.9 of 2. Use the matters needing attention.
Switch set in the ▼ position when use the safe mode.
 - 9. USB/WiFi mode switch.
 - 10. Reset button: WiFi mode restore factory default settings.
 - 11. WiFi link indicator: green light blinking when accessing data.
 - 12. LAN link indicator: green light blinking when accessing data.
 - 13. RJ45 Ethernet HUB interface.
2. Use the matters needing attention
- 2.1 This product has safe and normal mode.
- 2.2 Before use, please confirm the model and formatted with exFAT or FAT32.
- 2.3 When the user during the switching mode, if the device is connected to the USB, you must execute the safely remove hardware and exit from the media.
- 2.4 The user is in USB mode, use USB cable and power adapter.
- 2.5 The user is in WiFi mode, please use the power adapter and unplug the USB cable, if you use a USB3.0 device, USB2.0 device cannot be removed.
- 2.6 When user selects the safe mode, you can switch to the normal mode to check whether the hard disk data backup is ok.

- 2.7 Strongly recommends the use of two of the same brand, type, capacity hard disk.
- 2.8 The user selects the normal mode, can use a hard disk or two different brands, models, capacity hard disk.
- 2.9 The user selects normal mode, there are three cases can use H1/H2 switch:
1. Use the WiFi mode in the normal mode under the app MyAirDisk , you can use this switch to individual access data.
 2. Use the WiFi mode in the normal mode under the app MyAirDisk, if two different brands of hard disk is not compatible, you can use the switch to individual access data.
 3. Use the USB mode in the normal mode, if two different brands of hard disk is not compatible, you can use the switch to individual access data. Caution: you must execute the safely remove hardware and exit from the media.
- 2.10 Users to perform data rebuilt in the safe mode, do not perform other functions.

3. The use of safety

- Avoid direct sunlight, heat sources.
- Avoid shake in the process of operation.
- We suggest use original equipment and cable to avoid the risk of surge or electromagnetic interference.

※Q & A:

Q1: Why cannot identify the hard disk device?

- A: 1. Please connect with other USB port.
2. If still cannot identify, please go to “Device manager” click The “USB Mass Storage Device” is removed, then click “Scan for hardware changes” reinstall.

Q2: Users in the safe mode, if the hard disk damage, how to replace the new hard disk and perform the data rebuilt?

- A: If the hard disk is damaged, please perform safely remove hardware and exit from the media(without power cut) and damaged hard disk out and replace with a new hard disk, system will automatic backup, the H1 H2 LED indicator green light always blinking until the led does not light, after that the backup is complete.

Q3: User in safe mode, if the hard disk is damaged, a new hard disk data rebuilt need how long?

- A: The rebuilt time is about 250G/an hour.

Q4: How does know in safe mode that data has been stored in two hard disks?

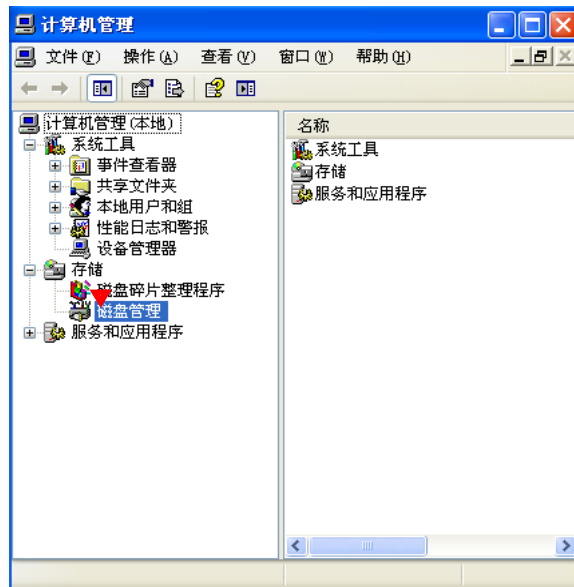
- A: 1. **The first perform safely remove hardware and exit from the media, then switch to normal mode, you can read two hard disks' data.**
2. Strong reminder, after check, please back to safe mode.

Q5: The user has download the exFAT patch KB955704 in Windows XP, how to format the hard disk?

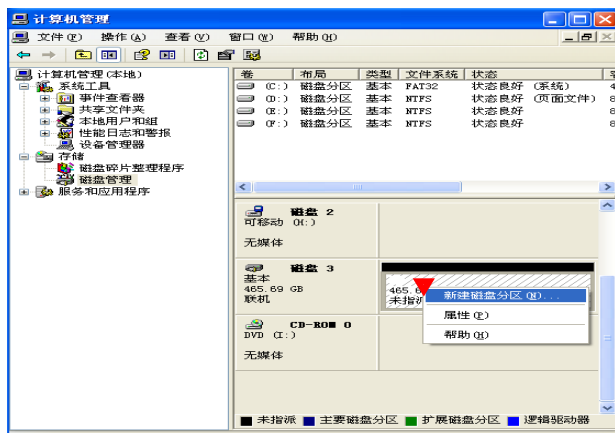
- A: 1. To the “my computer” click “Management”



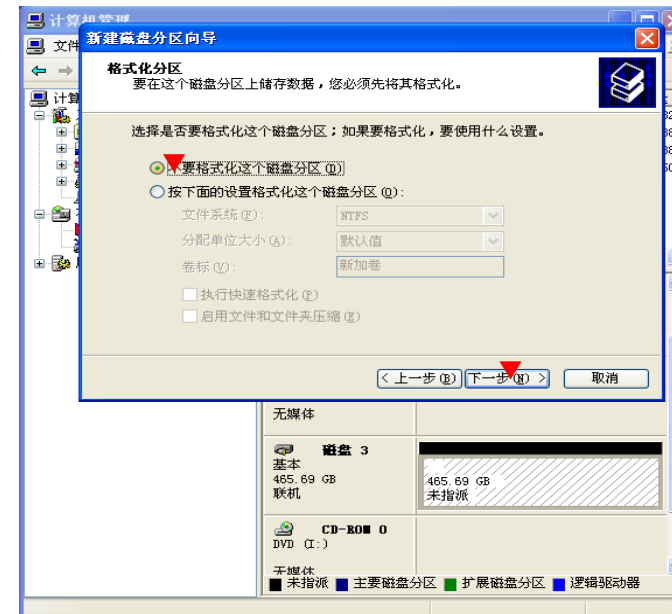
2. Click "Disk management"



3. Select "new partition assignment without disk area"

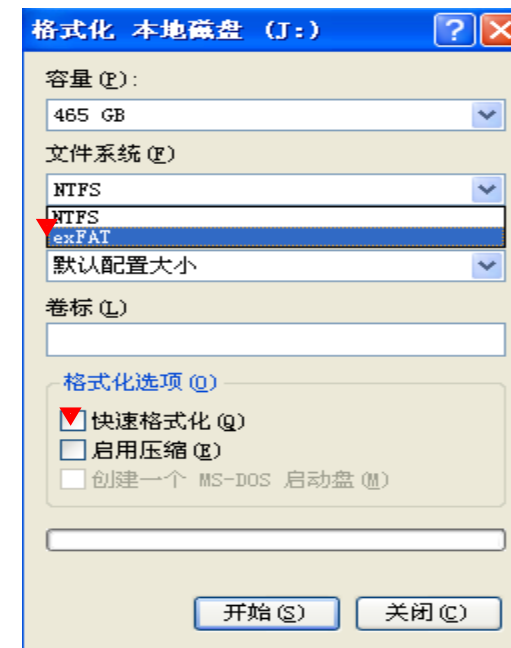
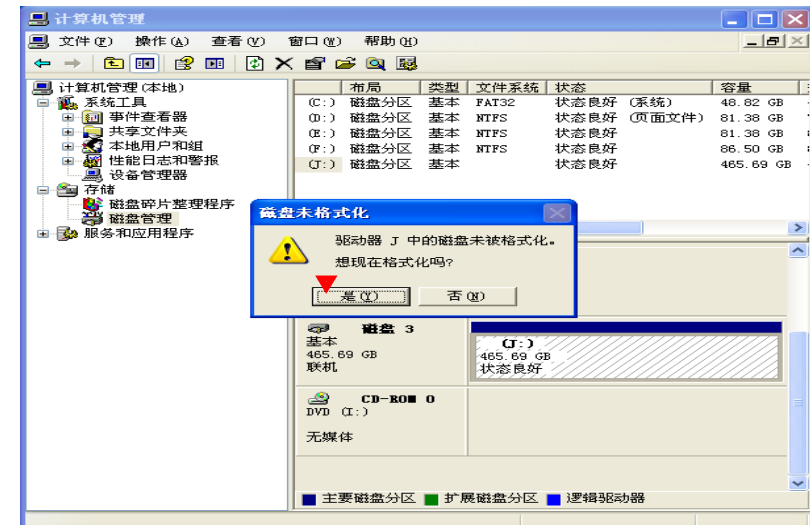
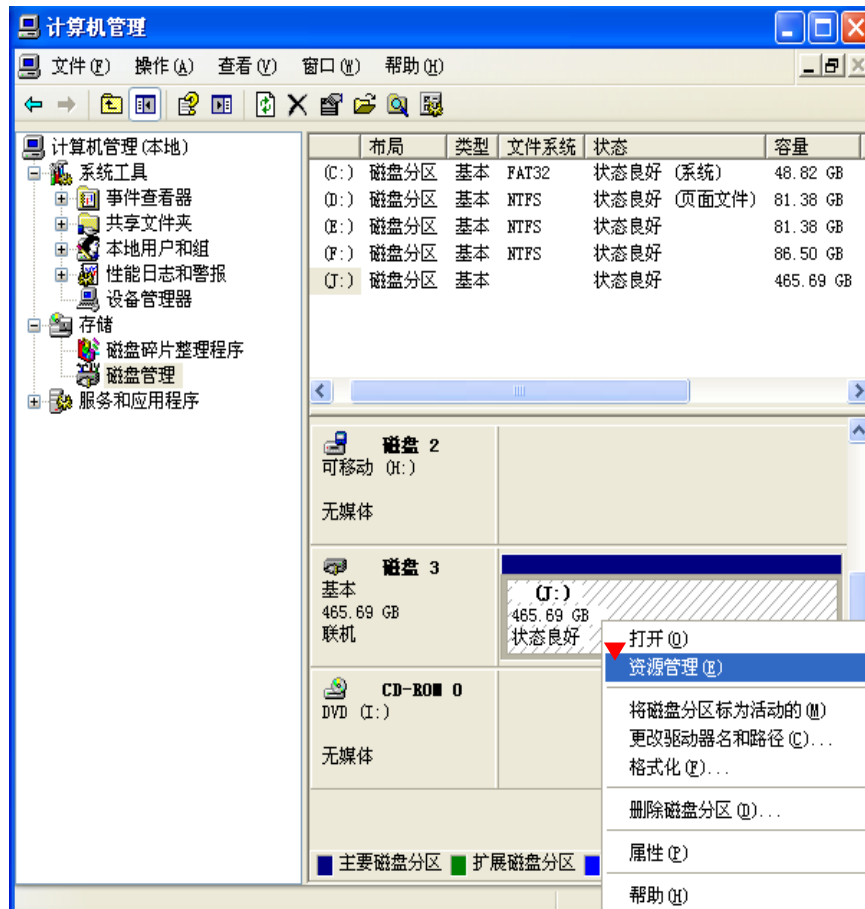


4. Down to select "New Partition Wizard" to choose not to format the disk area



5. click “Resource management”

- > click “Yes”
- > click “exFAT”
- > click “Fast format”
- > Finish.

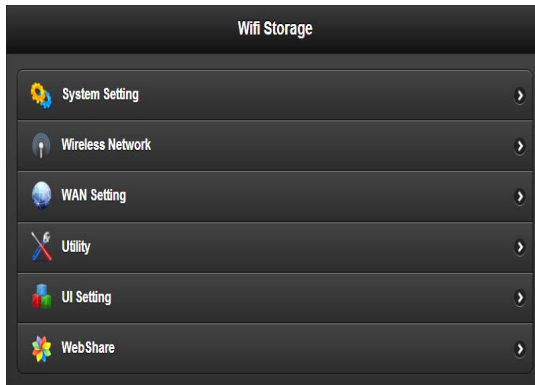


✂Instructions for use WiFi

1. The use of PC or intelligent mobile phone through a wireless network to connect to the AirDisk_xxx (SSID for the device), the default password: 12345678.
2. From the web browser into the IP address 192.168.99.1.
3. After into the webpage input **account : admin, password: admin.**

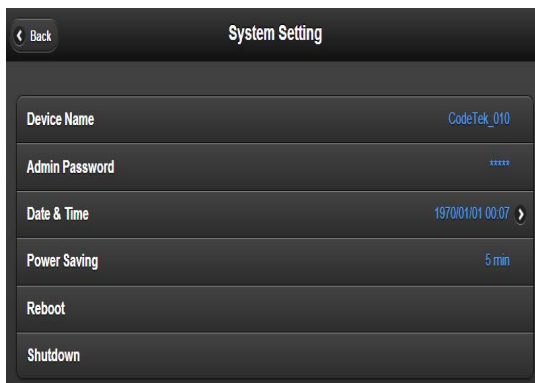
The webpage options:

1. system setting
2. wireless Network
3. WAN setting
4. Utility
5. UI Setting
6. Web Share



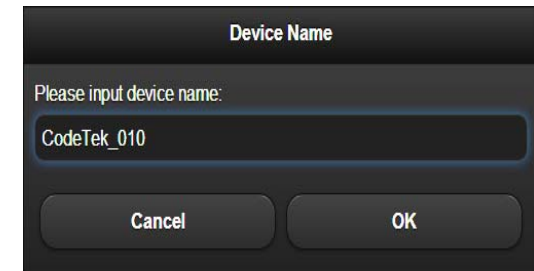
1. system setting

- 1-1. Device Name
- 1-2. Admin Password
- 1-3. Date & Time
- 1-4. Power Saving
- 1-5. Reboot
- 1-6. Shutdown



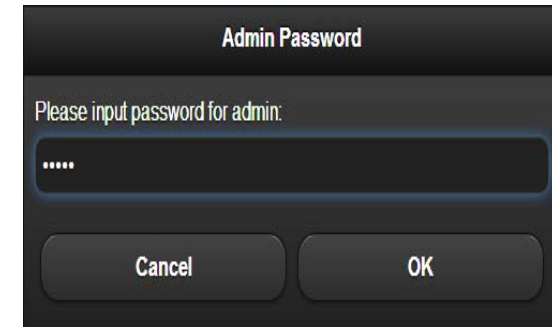
1-1. Dvice Name

Modify Device Name



1-2. Admin Password

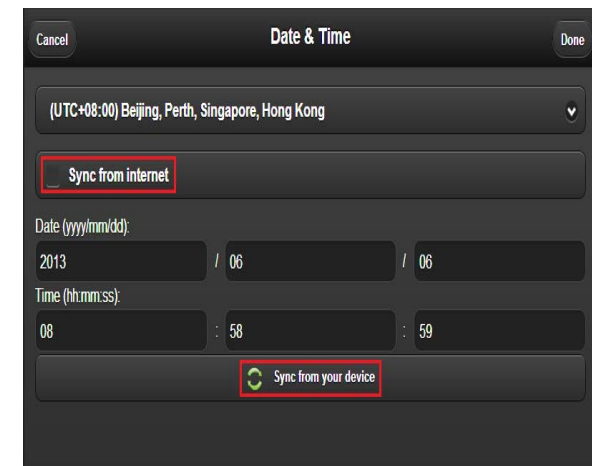
Device password default value:12345678.



1-3. Date & Time

Make time method:

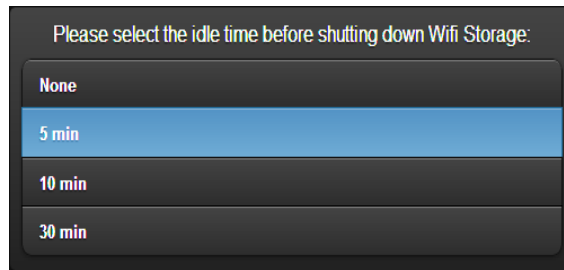
1. Choose sync from internet
2. sync from your device
3. Manually set time



SS ★ FE

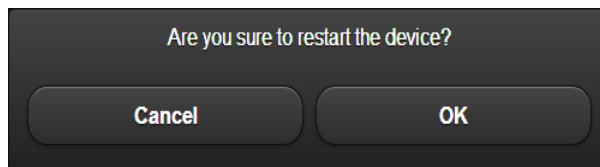
1-4.Power Saving

Choose save mode,
none/5min/10min/30min。
*SSW2B is not support。



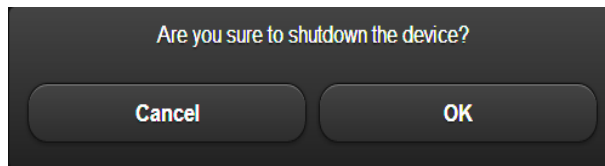
1-5. Reboot

Choose ok, device restart.



1-6.shut down

Choose ok, device
shutdown.



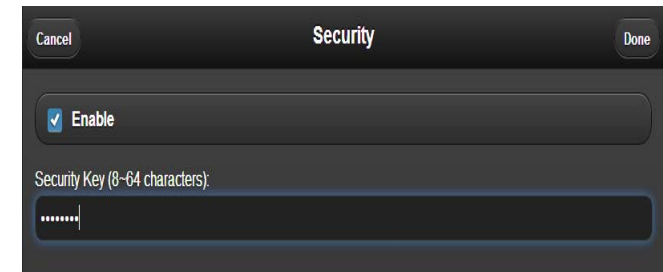
2. wireless Network

2-1.Security

SS ★ FE

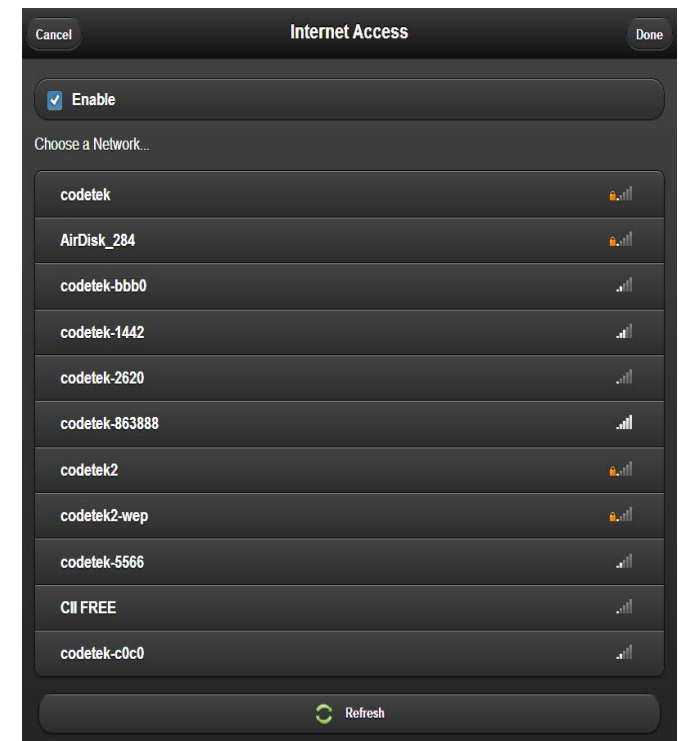
2-1.Wireless Network

Choose Enable can set
password, or do not
choose for Disable.



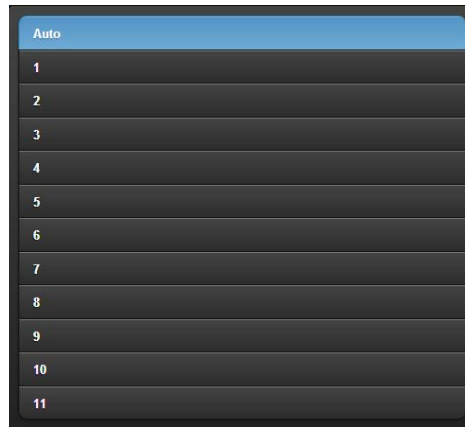
2-2.Internet Access

Choose Enable connect
wireless network, select
The wireless network
device online.



2-3.WiFi channel

The WiFi channel has a variety of device use, will affect the transmission speed, if the transmission speed decreases, can choose WiFi channel to avoid the majority of users.



3.Utility

3-1.Disk format

3-2.Firmware Upgrade

3-3.Factory Default



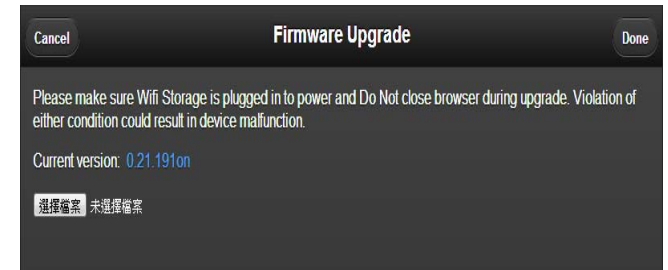
3-1.Disk format

To format the hard disk, format will delete all data, there are FAT32/exFAT two format selection.



3-2.Firmware Upgrade

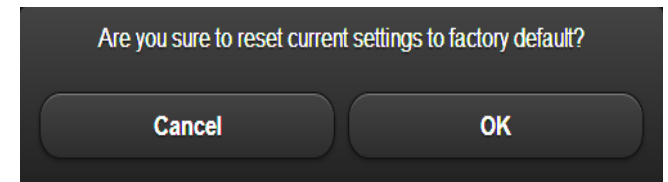
The firmware update can improve performance and modification bug of device.



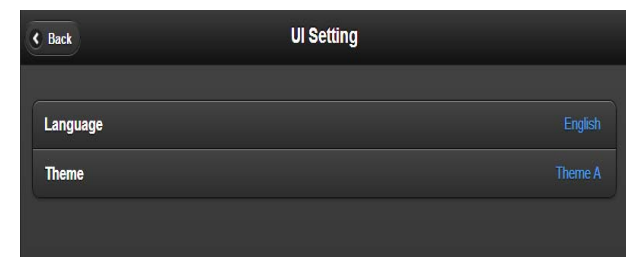
3-3. Factory Default

Restore factory settings

。



4.UI Setting



SS ★ FE

4-1.Language

1. English
2. Simplified Chinese
3. Traditional Chinese



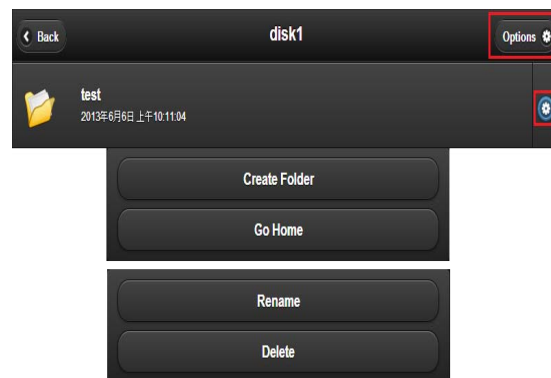
4-2.Theme

- A is black
B is blue
C and D are white
E is yellow



5.Web Share

- Click option can be create folder.
Click blue circle can be rename
and delete.




SS ★ FE

※ Apple Ipad and intelligent mobile phone please to the network to download and install **MyAirDisk Pro(iOS)**:

Step1: Enter the App Store.


Step2: Type **MyAirDisk Pro** and search.

Step3: Successful search to **MyAirDisk Pro**, click  to install.

※ Android tablet computer and intelligent mobile phone please to the network to download and install **MyAirDisk Pro(Android)**:

Step1: Enter the Play store.

Step2: Type **MyAirDisk Pro** and search.

Step3: Successful search to **MyAirDisk Pro**, click  to install.

Federal Communications Commission (FCC) Statement

This device complies with part 15 of the FCC Rules. Operation is subject to the following two conditions: (1) This device may not cause harmful interference, and (2) this device must accept any interference received, including interference that may cause undesired operation.

Note: This equipment has been tested and found to comply with the limits for a Class B digital device, pursuant to part 15 of the FCC Rules. These limits are designed to provide reasonable protection against harmful interference in a residential installation. This equipment generates, uses and can radiate radio frequency energy and, if not installed and used in accordance with the instructions, may cause harmful interference to radio communications. However, there is no guarantee that interference will not occur in a particular installation. If this equipment does cause harmful interference to radio or television reception, which can be determined by turning the equipment off and on, the user is encouraged to try to correct the interference by one or more of the following measures:

- Reorient or relocate the receiving antenna.
- Increase the separation between the equipment and receiver.
- Connect the equipment into an outlet on a circuit different from that to which the receiver is connected.
- Consult the dealer or an experienced radio/TV technician for help.

Warning: Changes or modifications made to this device not expressly approved by **Super Safe International Co., Ltd.** may void the FCC authorization to operate this device.

Note: The manufacturer is not responsible for any radio or tv interference caused by unauthorized modifications to this equipment. Such modifications could void the user's authority to operate the equipment.

RF Exposure Warning:

This device must maintain more than 20cm away from human body when using.