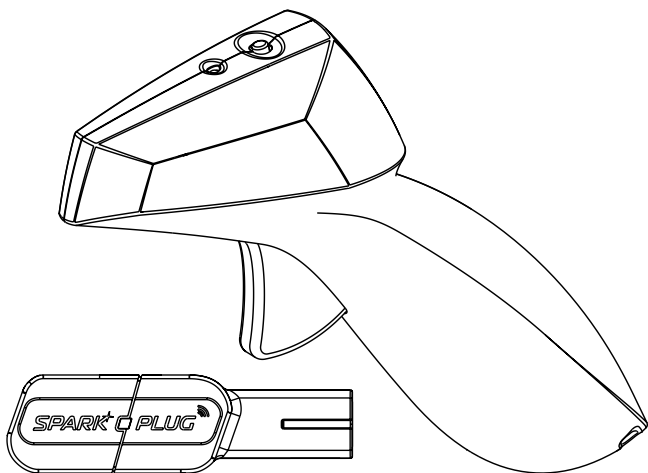


SCALEXTRIC

SPARK C PLUG

Wireless Controller Accessory Pack



Instructions



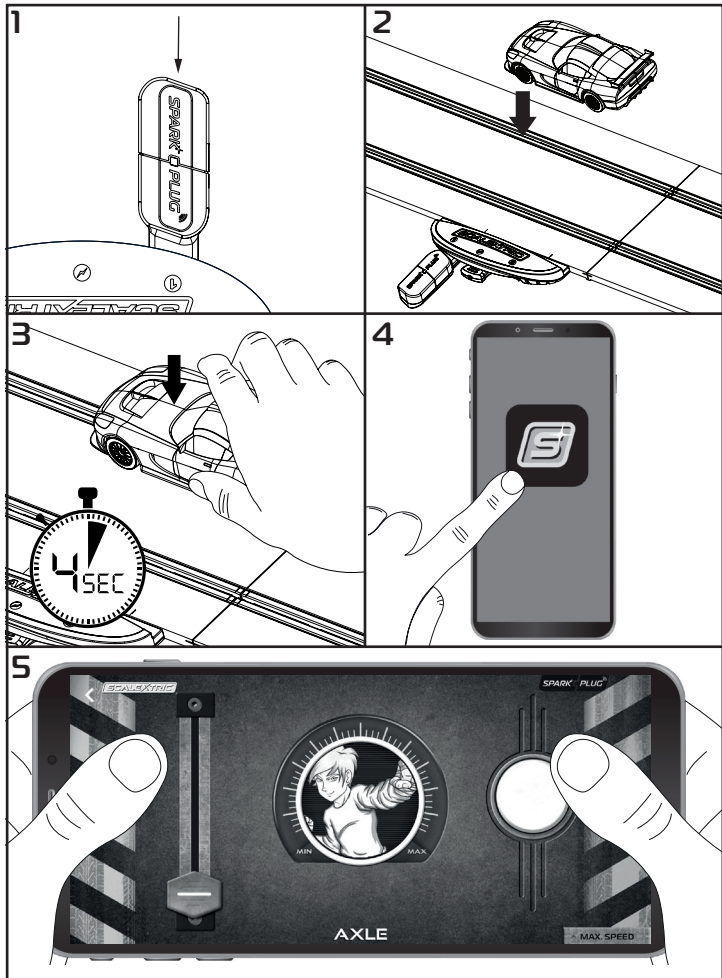
**HORNBY
HOBBIES**

Manufactured By:
Hornby Hobbies Ltd, Westwood, Margate, Kent, CT9 4JX, UK
EU Authorised Representative:
Hornby Italia SRL Viale dei Caduti, 52/A6, Castel Mella (BS), Italy, 25030

Printed in China
PI-01555

Smart-Device Control

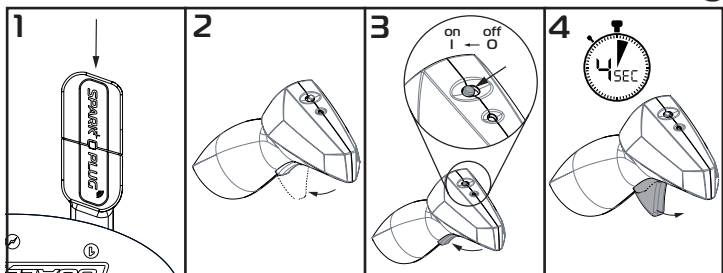
Connect



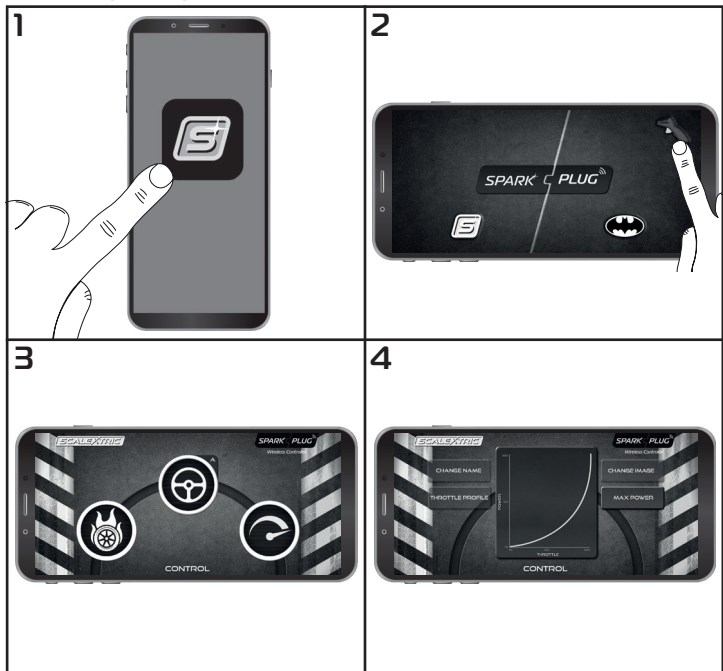
Hand Controller Control



Connect



Select Throttle Profile



REGULATORY COMPLIANCE INFORMATION

FCC Requirements

Note: This equipment has been tested and found to comply with the limits for a Class B digital device, pursuant to Part 15 of the FCC Rules. These limits are designed to provide reasonable protection against harmful interference in a residential installation. This equipment generates, uses, and can radiate radio frequency energy, and if not installed and used in accordance with the instructions, may cause harmful interference to radio communications. However, there is no guarantee that interference will not occur in a particular installation. If this equipment does cause harmful interference to radio or television reception, which can be determined by turning the equipment off and on, the user is encouraged to try to correct the interference by one or more of the following measures:

- Reorient or relocate the receiving antenna.
- Increase the separation between the equipment and receiver.
- Connect the equipment into an outlet on a circuit different from that to which the receiver is connected.
- Consult the dealer or an experienced radio/TV technician for help.

You are cautioned that changes or modifications not expressly approved by the party responsible for compliance could void your authority to operate the equipment.

This device complies with Part 15 of the FCC Rules. Operation is subject to the following two conditions:

- (1) this device may not cause harmful interference, and
- (2) this device must accept any interference received, including interference that may cause undesired operation.

This device complies with Innovation, Science and Economic Development Canada's licence-exempt RSSs. Operation is subject to the following two conditions:

- (1) This device may not cause interference; and
- (2) This device must accept any interference, including interference that may cause undesired operation of the device.

Le présent appareil est conforme aux CNR d'Innovation, Sciences et Développement économique Canada Canada applicables aux appareils radio exempts de licence.

L'exploitation est autorisée aux deux conditions suivantes :

- (1) l'appareil ne doit pas produire de brouillage, et
- (2) l'utilisateur de l'appareil doit accepter tout brouillage radioélectrique subi, même si le brouillage est susceptible d'en compromettre le fonctionnement.

Spark Plug Dongle

FCC ID 2ACUF-SA00528

IC 12075A-SA00528

ICES-003/NMB-003

Cet appareil numérique de la classe B est conforme à la norme ICES-003 du Canada.

Spark Plug Dongle FCC Radiation Exposure Statement

This equipment complies with FCC radiation exposure limits set forth for an uncontrolled environment. This equipment should be installed and operated with a minimum distance of 20cm between the radiator & your body. This transmitter must not be co-located or operating in conjunction with any other antenna or transmitter.

Spark Plug Hand Throttle

FCC ID 2ACUF-C8336

IC 12075A-C8336

CE Compliance For Europe

Marking by the CE symbol indicates compliance of this system to the applicable Council Directives of the European Union, including the Radio equipment Directive 2014/53/EU, EMC equipment Directive 2014/30/EU, LVD Directive 2014/35/EU

Warning

This product must be powered by a LPS power supply.

Manufacturers name – Hornby Hobbies ltd

Manufacturers name – Hornby Hobbies ltd

Model Number – C8333 – SA-00528

Model Number – C8336 – SSA-00189, SSA-00190

Input parameter – 15V DC 1.2A

Input parameter – 2 AA Batteries (3V DC)

Product dimensions – L 80mm X W 25mm X D 12mm

Product dimensions – L 183mm X W 45mm X D 78mm

Operating conditions – 0 C to +35 C (for indoor use only)

Operating conditions – 0 C to +35 C (for indoor use only)