

WIS-Q5300 User Manual

V1.0

1. Application

Thank you for your purchase WIS-Q5300. This handbook is to help you know and configure WIS-Q5300.

2. Configuration Preparation

2.1 Installation Device

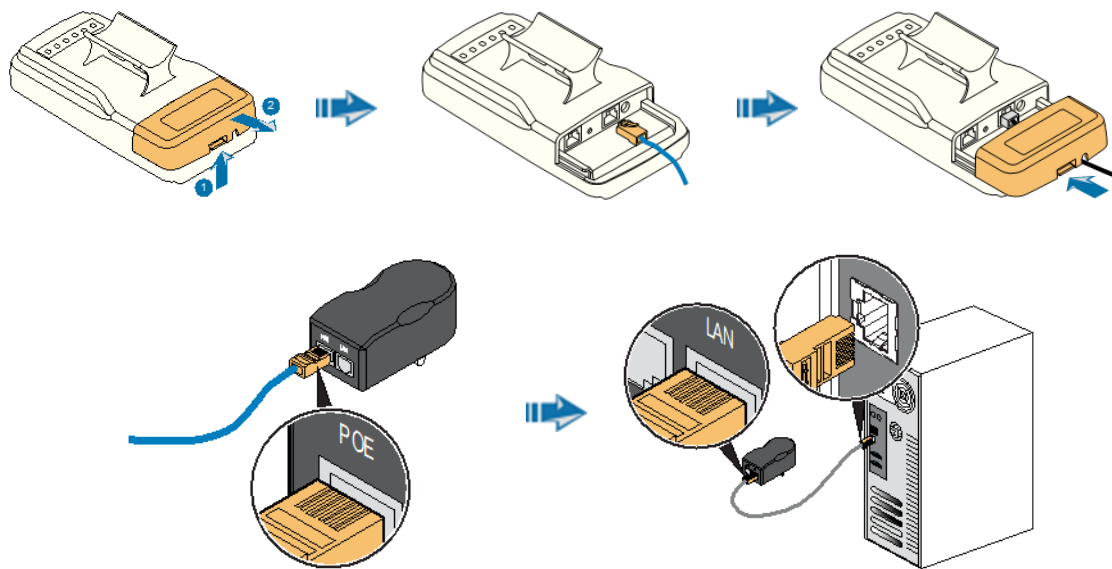


Figure 1

- Press the clip of 5GHz CPE, pull out the cover, stick one end of cable into ETH port; Slide the cover until the clip locked.
- Stick the other end of cable into POE port of power adapter.
- Take another cable, stick one end of cable into LAN port of adapter, the other end into computer port.
- Power adapter is plugged into outlet to ensure power open.

2.2 Network Settings

- Set PC and set IP address as 192.168.1.x (x is 1-254 except 2, to make sure no conflict with other IP of network.)
- Run Web browser, input <http://192.168.1.2> (default IP address) and enter.
- Figure 2, Default username: admin, Password: admin (You can change this password after entering the system), and then click Login to the system.



Figure 2

3. Configuration Instruction

3.1 Main Page

After logging enter automatically into Main Page, as shown. Status has 3 status label pages, Wireless, Network and System Page. The below is introduced separately.

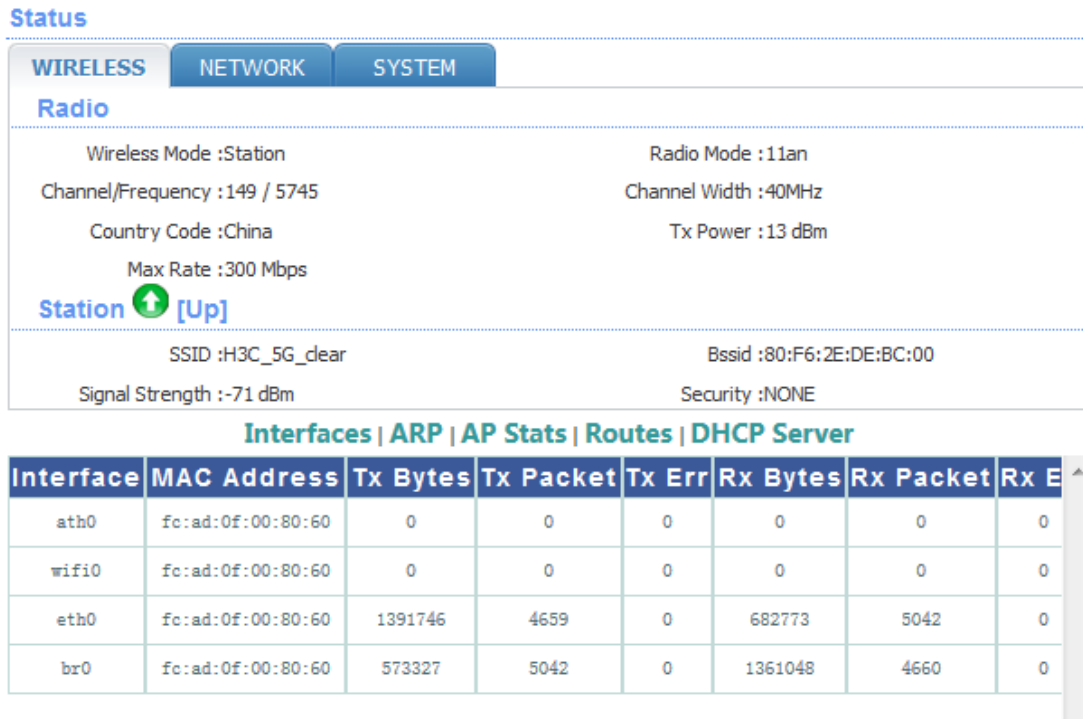


Figure 3-1

3.1.1 WIRELESS Page

Radio status box mainly shows work mode and RF information of 5GHz CPE.

- ◆ **Wireless mode:** working mode of 5GHz CPE, supporting 4 kinds of working mode, AP Mode、Station Mode、AP WDS Mode and Station WDS Mode;
- ◆ **Radio mode:** working mode of Radio, supporting 802.11a/an two kinds of working modes;
- ◆ **Channel/Frequency:** Radio current working channel and working frequency;
- ◆ **Channel Width:** Radio channel bandwidth , supporting 20MHz and 40MHz. Channel bandwidth has great influence to the wireless. Under no interference environment, average throughput of 40MHz channel bandwidth can reach more than twice of 20MHz channel bandwidth;
- ◆ **Country Code:** country code of current working Radio. Different country code has different channel and power for Radio supporting;
- ◆ **Tx Power:** current Radio transmission power. Transmission power influences directly signal strength of communication system, so we should guarantee transmission power big enough;
- ◆ **Max Rate:** max sending rate of Radio supporting. Different channel bandwidth could affect max

sending rate. If AP and Station can reach to 40MHz channel bandwidth, max sending rate can reach to 300Mbps, and throughput rate can improve more than twice.

Station status box shows CPE working as Station Mode.

- ◆ **Up/Down:** UP means CPE has successfully connected with AP. Down means that CPE has not
- ◆ **SSID:** SSID name of AP that CPE is connecting;
- ◆ **BSSID:** BSSID address of AP that CPE is connecting ;
- ◆ **Signal Strength:** signal strength of AP that CPE is connecting; Signal strength is negative, the smaller the absolute value of signal strength, the stronger it proves between CPE and AP. When it transmits in long distance, stronger signal can ensure higher thorough for wireless transmission.
- ◆ **Security:** security way of AP that CPE is connecting, CPE supporting None/WEP/WPA-TKIP/WPA-CCMP/WPA2-TKIP/WPA2-CCMP/WPA mix encryption and WPA2 mix encryption connecting AP.

Wireless1/2/3/4 status box shows CPE working as AP Mode. 5GHz CPE supports at most 4 wireless services, representing Wireless1/2/3/4.

- ◆ **Up/Down:** UP means interface of wireless service has started to work, and is providing wireless access services. And down means it has not.
- ◆ **SSID:** SSID of wireless service;
- ◆ **BSSID:** BSSID of wireless service broadcast Beacon using
- ◆ **Security:** security way of wireless service using, supporting None/WEP/WPA-TKIP/WPA-CCMP/WPA2-TKIP/WPA2-CCMP/WPA mix encryption and WPA2 mix encryption;
- ◆ **Asso number:** asso number of current wireless service.

3.1.2 NETWORK Page

Figure 3-2, mainly shows current network working mode and network parameter.

Status	
WIRELESS	NETWORK
Network Role	
Network Mode :	Bridge
Network Settings	
Bridge IP Address :	192.168.1.2
Netmask :	255.255.255.0
Bridge Mac :	FC:AD:0F:10:00:00
Gate way :	
Primary DNS IP :	
Secondary DNS IP :	

Figure 3-2

Network Mode of Network Role status box shows current network mode.

- ◆ **Network Mode:** device supports 3 kinds of Network Modes, namely Bridge Mode、SOHO Router Mode and WISP Mode.

We will have a brief introduction to those:

1. **Bridge Mode:** Bridge Mode is typical 2-layer network mode. CPE ETH port and wireless interface are working at 2-layer network mode, no independent IP address. For the whole CPE only Bridge port has IP address.
2. **SOHO Router Mode:** This mode is typical network mode of home wireless router. The ETH port is worked as WAN interface, connecting outer net by ETH port, like Internet or enterprise network. This device connects with public network supporting three ways: static IP address, DHCP dynamic IP address and PPPoE.

※Attention: Only when CPE works as AP Mode and AP WDS Mode, network mode can be set as SOHO Router Mode.

3. **WISP Mode:** This mode is opposite to SOHO Router. It uses wireless interface as WAN to connect public network and ETH port as 2-layer access port. For this mode we can think CPE as a large wireless network card.

※Attention: Only when CPE works as Station Mode or Station WDS Mode, network mode can be set as WISP Mode.

Network Settings status box shows some basic network parameter.

- ◆ **Bridge IP Address:** IP address of Bridge interface;
- ◆ **Net mask:** net mask of bridge interface IP address;

- ◆ **Bridge Mac:** MAC address of bridge interface;
- ◆ **Gateway:** gateway IP Address of bridge interface;
- ◆ **Primary DNS IP:** primary DNS address of bridge interface;
- ◆ **Secondary DNS IP:** secondary DNS address of bridge interface;

3.1.3 SYSTEM Page

This page mainly shows version, device name and so on, as shown Figure 3-3.

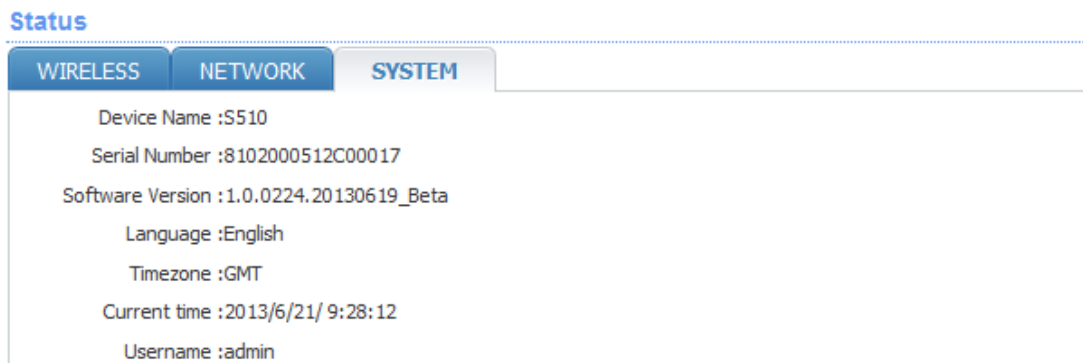


Figure 3-3

- ◆ **Device Name:** device name;
- ◆ **Serial Number:** device serial NO.;
- ◆ **Software Version:** current software version;
- ◆ **Language:** current web language;
- ◆ **Time zone:** current time zone;
- ◆ **Current time:** current time;
- ◆ **Username:** username when logining;

3.1.4 Interfaces List

Interfaces list counts send-receive info of all interfaces, as shown Figure 3-4.

[Interfaces](#) | [ARP](#) | [AP Stats](#) | [Routes](#) | [PPPoE Information](#) | [DHCP Server](#)

Interface	MAC Address	Tx Bytes	Tx Packet	Tx Err	Rx Bytes	Rx Packet	Rx Err
ath0	fc:ad:0f:00:da:38	39078	386	0	1508	386	0
wifi0	fc:ad:0f:00:da:38	39078	386	0	1508	18	0
eth0	fc:ad:0f:00:da:38	4222114	15369	0	2419689	15371	0
br0	fc:ad:0f:00:da:38	2311987	17365	0	4649329	16509	0
ppp0	00:00:00:00:00:00	52	4	0	64	4	0

Figure 3-4

- ◆ **Interface:** listing all interfaces and interface name;
- ◆ **MAC Address:** listing MAC address of all interfaces;
- ◆ **Tx Bytes:** sending bytes number;
- ◆ **Tx Packet:** sending packet ;
- ◆ **Tx Err:** sending error packet ;
- ◆ **Rx Bytes:** receiving bytes ;
- ◆ **Rx Packet:** receiving packet;
- ◆ **Rx Err:** receiving error packet.

3.1.5 ARP List

ARP List counts ARP information of device learning, as Figure 3-5.

Interfaces ARP Sta Stats Routes			
IP	MAC	Interface	Type
192.168.1.101	ec:88:8feb:15:6d	br0	0x1

Figure 3-5

- ◆ **IP:** IP address of device learning;
- ◆ **MAC:** MAC address corresponding to IP address of device learning;
- ◆ **Interface:** interface to IP address of device learning;
- ◆ **Type:** interface hardware type of learning ARP.

3.1.6 STA Stats List

When CPE works as AP Mode, STA Status List shows STA info of connecting AP, as Figure 3-6

Interfaces ARP STA Stats Routes DHCP Server			
Station MAC:	00:24:d7:12:0c:40	Mode:	11an
AID:	1	Signal:	13
Assoc Time:	00 - 00:00:43	Tx/Rx Packets:	0/98
Tx/Rx Bytes:	0/13184	Tx/Rx Rate:	0/0

Figure 3-6

- ◆ **BSSID:** BSSID of STA connecting wireless services;
- ◆ **Mode:** working mode of STA Radio;

- ◆ **AID:** connecting ID of STA;
- ◆ **Signal:** AP detected RSSI of STA;
- ◆ **Assoc Time:** time online of STA;
- ◆ **Tx/Rx Packets:** send-receive packets between AP and STA. Tx means sending packets from AP to STA, Rx means receiving packets from STA to AP;
- ◆ **Tx/Rx Bytes:** send-receive bytes between AP and STA. Tx means sending bytes from AP to STA, Rx means receiving bytes from STA to AP;
- ◆ **Tx/Rx Rate:** rate using by send-receive packets between AP and STA. Tx means sending rate from AP to STA, Rx means receiving rate from STA to AP, in fact it is sending rate of STA.

3.1.7 AP Stats List

When CPE works as Station Mode, AP Status List shows info of CPE connecting AP, as Figure 3-7

Interfaces ARP AP Stats Routes DHCP Server			
SSID:	H3C_5G_clear	BSSID:	80:f6:2e:de:bc:00
Mode:	11an	Channel:	149
Signal:	29	Assoc Time:	00 - 00:06:25
Tx/Rx packets:	27/1	Tx/Rx Bytes:	3527/64
Tx/Rx Rate:	0/24000	Encrypt:	NONE

Figure 3-7

- ◆ **SSID:** SSID name of AP that CPE is connecting;
- ◆ **BSSID:** BSSID address of AP that CPE is connecting;
- ◆ **Mode:** Radio work mode of AP that CPE is connecting;
- ◆ **Channel:** working channel of AP that CPE is connecting;
- ◆ **Signal:** CPE detected AP RSSI;
- ◆ **Assoc Time:** duration online after CPE is connecting AP;
- ◆ **Tx/Rx Packets:** send-receive packets between CPE and AP. Tx means sending packets from CPE to AP, Rx means receiving packets from AP to CPE;
- ◆ **Tx/Rx Bytes:** send-receive bytes between CPE and AP. Tx means sending bytes from CPE to AP, Rx means receiving bytes from AP to CPE ;
- ◆ **Tx/Rx Rate:** rate using by send-receive packets between CPE and AP. Tx means sending rate from CPE to AP, Rx means receiving rate from AP to CPE, in fact it is sending rate of AP.

3.1.8 Routes List

Routes list shows current routing relationship of device, as Figure 3-8.

Interfaces ARP AP Stats Routes PPPoE Information DHCP Server			
Destination	Gateway	Flags	Interface
8.1.1.1/255.255.255.255	0.0.0.0	0005	ppp0
192.168.1.0/255.255.255.0	0.0.0.0	0001	br0
0.0.0.0/0.0.0.0	0.0.0.0	0001	ppp0

Figure 3-8

- ◆ **Destination:** destination address and mask;
- ◆ **Gateway:** next address against destination address, that is gateway address.
- ◆ **Flags:** network type of this routing info;
- ◆ **Interface:** interface of this routing info.

3.1.9 PPPoE Information List

PPPoE information list shows connecting state of current PPOE, as Figure 3-9.

Interfaces ARP AP Stats Routes PPPoE Information DHCP Server			
Server Name:	hzi003	Connection Time:	00 - 01:54:12
Local IP Address:	8.1.1.10	TX Packets:	4
Remote IP Address:	8.1.1.1	RX Packets:	4
Primary DNS IP:	8.1.0.100	TX Bytes:	64
Secondary DNS IP:		RX Bytes:	52

Figure 3-9

- ◆ **Server Name:** server name of PPPoE server;
- ◆ **Connection Time:** time online of PPPoE connection;
- ◆ **Local IP Address:** local IP address of PPPoE client;
- ◆ **Remote IP Address:** remote IP address of PPPoE server;
- ◆ **Primary DNS IP:** primary DNS address of PPPoE client;
- ◆ **Secondary DNS IP:** secondary DNS address of PPPoE client ;
- ◆ **TX Packets:** CPE sending packets by PPP interface;
- ◆ **RX Packets:** CPE receiving packets by PPP interface;
- ◆ **TX Bytes:** CPE sending bytes by PPP interface;

- ◆ **RX Bytes:** CPE receiving bytes by PPP interface.

3.1.10 DHCP Server List

DHCP Server List shows status of assigning IP address when CPE is DHCP Server, as Figure 3-10.

Interfaces ARP AP Stats Routes PPPoE Information DHCP Server			
MAC Address	IP Address	Remaining Lease	Hostname
00:e0:4c:20:c3:75	192.168.1.203	00 - 00:19:40	H00031A

Figure 3-10

- ◆ **MAC Address:** MAC address of DHCP Client;
- ◆ **IP Address:** IP address of DHCP Client;
- ◆ **Remaining Lease:** remaining lease to this IP address of DHCP Server;
- ◆ **Hostname:** hostname of DHCP Client.

3.2 Radio Page

Radio Page is mainly used for setting WLAN R/F parameter, as Figure 3-11.

MAIN
RADIO
WIRELESS
NETWORK
SERVICES
SYSTEM

Basic Wireless Settings

Wireless Mode : ▼

IEEE 802.11 Mode : ▼

Channel Width : ▼

Channel : ▼

Tx Power : ▼

Max TX Rate : ▼

Advanced Wireless Settings

RTS Threshold : Enable

Fragmentation Threshold : Enable

Distance : KM

Aggr Enable : Enable

Aggr Limit Enable : Enable

Frames

Bytes

Figure 3-11

3.2.1 Basic Wireless Settings

- ◆ **Wireless Mode:** used for working mode of WLAN, 5GHz CPE supporting AP Mode, Station Mode, AP WDS Mode and Station WDS Mode, the default is Station Mode.

Because settings of those 4 modes have little impact to parameter setting of whole Radio, we will not introduce parameter setting of Radio for 4 modes.

- ◆ **Country code:** used for setting country code of Radio, the default is China;
- ◆ **IEEE 802.11 Mode:** used for setting working mode of Radio, the default is 802.11n;
- ◆ **Channel Width:** used for setting occupied bandwidth of channel, the default is 20MHz Mode;
- ◆ **Channel:** used for setting working channel of Radio, the default is auto channel;
- ◆ **Tx Power:** used for setting transmission power of Radio, the default is 24dBm;

※Attention: Transmission power can influence signal strength of wireless communication. when it transmits in long distance, pls properly increase transmit power to ensure stronger signal. And when testing indoor, pls properly decrease transmission power in order to prevent signal saturation for higher signal strength.

- ◆ **Max TX Rate:** used for setting packets sending rate of Radio. 5GHz CPE is 2X2 device, so max support is MCS=15 and default setting.

3.2.2 Advanced Wireless Settings

- ◆ **RTS Threshold:** used for setting RTS/CTS threshold, the default is off state;

※Attention: RTS/CTS is mainly to prevent hidden node disturbing. But if RTS/CTS threshold is set much smaller, it may obviously reduce throughput rate of wireless communication.

- ◆ **Fragmentation Threshold:** used for setting fragmentation threshold, the default is off state;
- ◆ **Distance:** used for setting transmission distance between AP and STA, so that system can choose proper ACK_timeout, the default is 3Km. When it is transmitting in long distance, proper adjusting Distance can improve throughput rate.
- ◆ **Aggr Enable:** used for setting “enable” and “to enable” sending function of A-MPDU, the default is enable state;
- ◆ **Aggr limit Enable:** used for setting sending limit function of A-MPDU, the default is enable state, the max aggr packet of the default is 64 units, the max aggr length is 60000 bytes. As long as one condition meets, it

will trigger aggr limit.

3.3 WIRELESS Page

Wireless Page is used for setting wireless service of AP Mode or relevant parameters for Station Mode connecting AP.

3.3.1 AP/AP WDS Mode

When CPE is set as AP/AP WDS Mode, Wireless Page is shown as Figure 3-12.

1. Wireless Settings

- ◆ **Wireless1/2/3/4:** device can set 4 wireless service at most, separately 4 labels to distinguish;
- ◆ **Wireless Availability:** used for “enable” or “to enable” wireless service, the default is “to enable” state;
- ◆ **Hide SSID:** used for “enable” and “to enable” hiding SSID function, the default is “to enable” state;
- ◆ **SSID:** used for entering SSID of wireless service.

Figure 3-12

2. Wireless Security

- ◆ **Security:** used for setting security type, the default is None.;

If choosing WEP security type, as shown Figure 3-13.

Wireless Security

Security : WEP

Authentication Type : Open Shared Key

WEP Key Length : 64 bit

WEP Key :

Key Type : ASCII

Key Index : 1

Apply

Figure 3-13

- ◆ **Authentication Type:** used for setting authentication method, the default is open;
- ◆ **WEP Key Length:** used for setting WEP key length, the default is 64 bit;
- ◆ **Key Type:** used for setting key type , the default is ASCII type;
- ◆ **WEP Key:** used for entering WEP key;
- ◆ **Key Index:** used for choosing key index, the default is 1.

If choosing WPA/WPA2 security type, as shown Figure 3-14.

Wireless Security

Security : WPA2-AES

WPA Authentication : PSK

WPA Preshared Key : ●●●●●●●●●● Show

Apply

Figure 3-14

- ◆ **WPA Authentication:** used for setting WPA/WPA2 authentication method, current only supporting PSK .
- ◆ **WPA Preshard Key:** used for setting PSK key of WPA/WPA2, supporting ASCII and Hex.

3.3.2 Station/Station WDS Mode

When CPE is set as Station/Station WDS Mode, Wireless Page is shown as Figure 3-15.

Wireless Settings

SSID :

Lock to AP MAC :

Wireless Security

Security :

Figure 3-15

1. Wireless Settings

- ◆ **SSID:** When CPE is set as Station Mode, enter here SSID of linked AP. If just enter SSID not AP MAC address, CPE will choose the strongest signal among homonym SSID to link.
- ◆ **Lock to AP MAC:** used for locking MAC address needing to link AP. After SSID and AP MAC both enter, CPE will link AP which meet two condition, not only same SSID.
- ◆ **Scan:** Scan button is used for scanning CPE SSID info under available channel, as Figure 3-16.

MAC Address	SSID	Auth_mode	Encryption	Signal / Noise, dBm	Frequency, GHz	Channel	
1. 80:F6:2E:DE:BC:00	H3C_5G_clear			-63 / -95	5.745	149	<input type="button" value="Lock to AP"/>
2. 80:F6:2E:9E:AA:20	QTS_5G_PPPoE_clear			-64 / -95	5.765	153	<input type="button" value="Lock to AP"/>
3. 58:66:BA:77:69:60	zww_11an			-62 / -95	5.805	161	<input type="button" value="Lock to AP"/>

Figure 3-16

- ◆ **MAC Address:** CPE scanned BSSID address of wireless service;
- ◆ **SSID:** CPE scanned BSSID name of wireless service;
- ◆ **Auth_mode:** CPE scanned authentication method of wireless service;
- ◆ **Encryption:** CPE scanned encryption way of wireless service ;
- ◆ **Signal/Noise:** CPE scanned signal strength and noise intensity of wireless service;
- ◆ **Frequency:** CPE scanned working frequency of wireless service;
- ◆ **Channel:** CPE scanned working channel of wireless service;

- ◆ **Lock to AP:** locking it as wireless service that CPE will connect.

2. Wireless Security

There is no more introduction for choosing it according to authentication method and encryption way.

3.4 NETWORK Page

NETWORK Page is used for setting relevant parameters of network mode. As told before, 5GHz CPE is supporting Bridge Mode, SOHO Router Mode and WISP Mode.

Because SOHO Router Mode and WISP Mode is the same for the effect of settings page, there is introduction about Bridge Mode and WISP Mode.

3.4.1 Bridge Mode

Setting of Bridge Mode is shown as Figure 3-17.

Network Role

Network Mode : Bridge

Management Network Settings

Bridge IP Address : DHCP Static

IP Address : 192.168.1.2

Netmask : 255.255.255.0

Gateway IP :

Primary DNS IP :

Secondary DNS IP :

MTU : 1500

LAN Network Settings

DHCP Server : Disabled Enabled

Range Start :

Range End :

Netmask :

Lease Time : seconds

DNS Proxy : Enable

Apply

Figure 3-17

1. Network Role

- ◆ **Network Mode:** used for setting current network mode.

2. Management Network Settings

- ◆ **Bridge IP Address:** Bridge IP address obtaining way, separately static set and DHCP access;
- ◆ **IP Address:** used for setting static IP address;
- ◆ **Netmask:** used for setting netmask of static IP address;
- ◆ **Gateway IP:** used for setting static gateway address;
- ◆ **Primary DNS IP:** used for setting static main DNS address;
- ◆ **Secondary DNS IP:** used for setting static backup DNS address;
- ◆ **MTU:** used for setting MTU, the default is 1500 bytes.

3. LAN Network Settings

- ◆ **DHCP Server:** used for “enable” or “to enable” DHCP Server function, the default is “to enable”state;
- ◆ **Range Start:** used for setting range start IP address of DHCP Server address pool;
- ◆ **Range End:** used for setting range end IP address of DHCP Server address pool;
- ◆ **Netmask:** used for setting netmask of DHCP Server address field;
- ◆ **Lease Time:** used for setting lease time DHCP Server assigned address;
- ◆ **DNS Proxy:** used for “enable” or “to enable” DNS proxy function.

3.4.2 WISP Mode

Setting of WISP Mode is shown as Figure 3-18.

Network Role

Network Mode :

WAN Network Settings

WAN IP Address : DHCP Static PPPoE
 Username :
 Password : show
 Service Name :
 Fallback IP :
 Fallback NetMask :
 MTU/MRU : /
 Encryption :
 NAT : Enable
 NAT Protocol : SIP PPTP FTP RTSP

LAN Network Settings

IP Address :
 Netmask :
 DHCP Server : Disabled Enabled
 Range Start :
 Range End :
 Netmask :
 Lease Time : seconds
 DNS Proxy : Enable

Figure 3-18

1. Network Role

- ◆ **Network Mode** : used for setting current network mode.

2. WAN Network Settings

- ◆ **WAN IP Address**: WAN IP address obtaining way, separately static set, DHCP access and PPPoE negotiation.

Because static set and DHCP access are the same with setting of Bridge Mode, there is directly introduction PPPoE;

- ◆ **Username**: used for setting PPPoE connection username ;
- ◆ **Password**: used for setting PPPoE connection password;
- ◆ **Service Name**: used for setting PPPoE connection service name;
- ◆ **Fallback IP**: used for setting fallback IP address after PPPoE negotiation failed;
- ◆ **Fallback Netmask**: used for setting fallback netmask of IP address after PPPoE negotiation failed;

- ◆ **MTU/MRU:** used for setting MTU and MRU PPPoE negotiation;
- ◆ **Encryption:** used for setting MPPE Agreement when “enable” or “to enable” PPPoE negotiation is using (Microsoft Point-to-Point Encryption Agreement);
- ◆ **NAT:** used for setting NAT service of “enable” or “to enable” CPE;
- ◆ **NAT Protocol:** For some NAT service of special agreement, it needs to enable alone, CPE supporting NAT service of SIP、RSTP、FTP and PPTP.

3. LAN Network Settings

- ◆ **IP address:** used for setting IP address of management devices;
- ◆ **Netmask:** used for setting netmask of IP address;
- ◆ **DHCP Server:** used for “enable” or “to enable” DHCP Server function, the default is “to enable” state;
- ◆ **Range Start:** used for setting range start IP address of DHCP Server address pool;
- ◆ **Range End:** used for setting range end IP address of DHCP Server address pool;
- ◆ **Netmask:** used for setting netmask of DHCP Server address field;
- ◆ **Lease Time:** used for setting lease time DHCP Server assigned address;
- ◆ **DNS Proxy:** used for “enable” or “to enable” DNS proxy function.

3.5 SERVICES Page

Services Page is used for setting safe access, access management and so on, as Figure 3-19.

The screenshot shows a configuration page with a dark blue header containing navigation tabs: MAIN, RADIO, WIRELESS, NETWORK, SERVICES, and SYSTEM. The main content area is white with a light blue border. It features several expandable sections: 'Web Server' (expanded), 'Telnet Server' (expanded), 'Security Basic', 'Security Service', 'Virus Protection', 'Website Control', and 'Mac Control'. The 'Web Server' section has two input fields: 'Server Port' with the value '80' and 'Session Timeout' with the value '15' and the unit 'minutes'. The 'Telnet Server' section has a checkbox for 'Enable Telnet Server' which is unchecked, and a 'Server Port' input field with the value '23'. An 'Apply' button is located at the bottom center of the configuration area.

Figure 3-19

3.5.1 Web Server

- ◆ **Server Port:** used for setting server port of web service, the default is 80;
- ◆ **Session Timeout:** used for setting web session timeout, the default is 15 minutes.

3.5.2 Telnet Server

- ◆ **Enable Telnet Server:** used for “enable” or “to enable” Telnet server, the default is “to enable” state;
- ◆ **Server Port:** used for setting server port of telnet server, the default is 23.

3.5.3 Security Basic

Security Basic is used for defending common outer net attack, including intrusion 、 damage, and obtaining or changing sensitive data. Page is set as Figure 3-20.

- ◆ **port scan detect:** port scan, if enable, refuse outer net to scan equipment;
- ◆ **ping of death detect:** ping flood attack, if enable, still allow ping request, but restrict frequent ping request;
- ◆ **sync flood attack detect:** sync flood attack, if enable, restrict frequency of sending sync;
- ◆ **fragment attack detect:** fragment attack, if enable, restrict fragment package of outer net;

- ◆ **spoofing attack detect:** spoofing attack, if enable, prevent outer net linking by using inner net IP;
- ◆ **ping attack detect:** ping request, if enable, abandon ping request of outer net sending;
- ◆ **tcp null scan detect:** tcp null scan, if enable, abandon null scan of tcp sending;
- ◆ **ACK cheat detect:** ack request, if enable, abandon false ack package of tcp sending;
- ◆ **finger scan detect:** finger scan, if enable, abandon relevant requests of finger service;
- ◆ **netbios scan detect:** netbios scan, if enable, abandon relevant requests of netbios service.

Security Basic

port scan detect :	<input type="checkbox"/>	ping of death detect :	<input type="checkbox"/>
sync flood attack detect :	<input type="checkbox"/>	fragment attack detect :	<input type="checkbox"/>
spoofing attack detect :	<input type="checkbox"/>	ping attack detect :	<input type="checkbox"/>
tcp null scan detect :	<input type="checkbox"/>	ack cheat detect :	<input type="checkbox"/>
finger scan detect :	<input type="checkbox"/>	netbios scan detect :	<input type="checkbox"/>

Figure 3-20

3.5.4 Security Service

Security Service is mainly used for forbidding or allowing access of some web service, as Figure 3-21.

Security Service

serve :	port :	prohibit :
FTP	21	<input type="checkbox"/>
SSH	22	<input type="checkbox"/>
TELNET	23	<input type="checkbox"/>
HTTP	80	<input type="checkbox"/>
DNS	53	<input type="checkbox"/>

图 3-21

- ◆ **ftp:** Port 21, if enable, forbid ftp service;
- ◆ **ssh:** Port 22, if enable, forbid ssh service;
- ◆ **telnet:** Port 23, if enable, forbid telnet service;
- ◆ **http:** Port 80, if enable, forbid http service;
- ◆ **dns:** Port 53, if enable, forbid dns service;

※Attention: if enable corresponding service by http, it will forbid http service, and user cannot visit through browser.

3.5.5 Virus Protection

Virus protection can prevent common network virus attack, as shown Figure 3-22.

- ◆ **worm_virus:** worm virus, if enable, prevent worm virus attack;
- ◆ **shake_virus:** shake virus, if enable, prevent shake virus attack;
- ◆ **shock_virus:** shock virus, if enable, prevent shock virus attack;
- ◆ **hackers_horse:** hackers horse, if enable, prevent hackers horse attack ;
- ◆ **netbus_horse:** netbus horse, if enable, prevent netbus horse attack;
- ◆ **netspere_horse:** netspere horse, if enable, prevent netspere horse attack;

Virus Protection

worm_virus :	<input type="checkbox"/>	shake_virus :	<input type="checkbox"/>
shock_virus :	<input type="checkbox"/>	hackers_horse :	<input type="checkbox"/>
netbus_horse :	<input type="checkbox"/>	netspere_horse :	<input type="checkbox"/>

Figure 3-22

3.5.6 Website Control

Website Control can set web blacklist. If web address is in the list, user cannot visit them. Now 20 website can be set, if do not control website, all website can be visit, as shown Figure 3-23.

Website Control

Website Url:

id	Website Url	

Figure 3-23

3.5.7 MAC Control

MAC Control means to restrict Internet access by computer MAC address, and manage access and visit of users by supporting blacklist or white list. Don't open MAC control in the case of the default, that is to say, all computers can visit Internet without limit, as Figure 3-24.

Mac Control

File Mode: Disable Mac Filter ▼

MAC 1:	<input type="text"/> - <input type="text"/> - <input type="text"/> - <input type="text"/> - <input type="text"/> - <input type="text"/>	MAC 2:	<input type="text"/> - <input type="text"/> - <input type="text"/> - <input type="text"/> - <input type="text"/> - <input type="text"/>
MAC 3:	<input type="text"/> - <input type="text"/> - <input type="text"/> - <input type="text"/> - <input type="text"/> - <input type="text"/>	MAC 4:	<input type="text"/> - <input type="text"/> - <input type="text"/> - <input type="text"/> - <input type="text"/> - <input type="text"/>
MAC 5:	<input type="text"/> - <input type="text"/> - <input type="text"/> - <input type="text"/> - <input type="text"/> - <input type="text"/>	MAC 6:	<input type="text"/> - <input type="text"/> - <input type="text"/> - <input type="text"/> - <input type="text"/> - <input type="text"/>
MAC 7:	<input type="text"/> - <input type="text"/> - <input type="text"/> - <input type="text"/> - <input type="text"/> - <input type="text"/>	MAC 8:	<input type="text"/> - <input type="text"/> - <input type="text"/> - <input type="text"/> - <input type="text"/> - <input type="text"/>
MAC 9:	<input type="text"/> - <input type="text"/> - <input type="text"/> - <input type="text"/> - <input type="text"/> - <input type="text"/>	MAC10:	<input type="text"/> - <input type="text"/> - <input type="text"/> - <input type="text"/> - <input type="text"/> - <input type="text"/>

Apply

Figure 3-24

※Attention: MAC Control is available to all ports. Pls be careful to setup.

3.6 SYSTEM Page

SYSTEM Page is mainly used for setting relevant device management, as Figure 3-25.

The screenshot displays the configuration page for the WIS-Q5300 device, organized into four main sections:

- Device:** Includes fields for Device Description (CPE), Enable Startup Date (checkbox), and Startup Date (2013-03-01). The Timezone is set to (GMT) Western Europe Time.
- System Accounts:** Fields for Username (admin), Current Password, New Password, and Verify New Password, with an Apply button.
- Configuration Management:** Buttons for Restore, Export, Import, and Reboot.
- Firmware Upgrade:** An Update File field with a browser button and an Upgrade button.

Figure 3-25

3.6.1 Device

- ◆ **Device Description:** used for setting device description;
- ◆ **Enable Startup Date:** used for setting enable startup date, the default is enable state;
- ◆ **Startup Date:** used for setting device startup date.

3.6.2 Date Settings

- ◆ **Time zone:** used for setting device time zone.

3.6.3 System Accounts

- ◆ **Username:** used for setting admin username;
- ◆ **Current Password:** amending username and new password after entering current password;
- ◆ **New Password:** used for setting new password;
- ◆ **Verify New Password:** used for verifying new password.

3.6.4 Configuration Management

- ◆ **Restore Factory defaults:** used for restoring factory default;
- ◆ **Export Configuration :** used for exporting latest configuration;
- ◆ **Import Configuration:** used for importing configuration into device;
- ◆ **Reboot:** used for rebooting device;

3.6.5 Firmware upgrade

Firmware upgrade is used for upgrading software of the device.

3.6.6 Specification

Feature	Item	Content	
Hardware information	POE	Passive POE(24V DC)	
	Reset	Yes	
	LED Indicator	Power:On/Off	
		LAN:On/Off/Flashing	
		WLAN:On/Off/Flashing	
		RSSI Signal:1,2,3,	
	Ethernet	1 x 10/100/1000M LAN port(Support Passive POE)	
Power	Input:110~220V AC Output:24VDC/0.8A		
Wireless Features	Frequency Range	5.745-5.805 GHz	
	Antenna	16dBi dual-polarized directional antenna	
	Beamwidth(HPBW)	Horizontal:45°, Vertical: 45°	
	Channel	N/A	
	Modulation	DBPSK、DQPSK、CCK and OFDM(BPSK/QPSK/16-QAM/64-QAM)	
	Security	WPA/WPA2;WPA-PSK/WPA2-PSK (AES/TKIP) Encryption; 64/128-bit WEP;	
Physical Parameters	Power Consumption	3W	
	Enclosure	Outdoor weatherproof	
	Working Temp	-40 ~ 40°C	
	Storage Temp	-40 ~45°C	
	Working Humidity	10%~95% non-condensing	

ATTENTION:

1. The PoE adapter shall be installed near the equipment and shall be easily accessible.
2. To comply with the CE RF exposure requirements, keep the human user's body at 20cm from the device.