

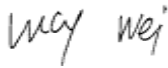
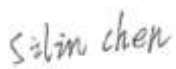

FCC SAR Measurement and Test Report

For

ZillionSource Technologies (Shanghai) Co., Ltd.

**Suit 2D-18,1building,HuaShen Road, NO.198, Shanghai Free Trade Zone,
Shanghai, China**

FCC ID: 2ACRJZS-300

FCC Rules:	FCC Part 2.1093 ANSI / IEEE C95.1 :2005+A1:2010 <u>ANSI / IEEE C95.3 :2002(R2008)</u>
Product Description:	<u>Environmental variable collector for logistics</u>
Tested Model:	<u>ZS-300</u>
Report No.:	<u>STR18028075H</u>
Sample Received Date:	<u>2018-05-07</u>
Tested Date:	<u>2018-05-07 to 2018-05-09</u>
Issued Date:	<u>2018-05-09</u>
Tested By:	<u>Lucy Wei / Engineer</u> 
Reviewed By:	<u>Silin Chen / EMC Manager</u> 
Approved & Authorized By:	<u>Jandy So / PSQ Manager</u> 
Prepared By:	

Shenzhen SEM Test Technology Co. Ltd.

1/F, Building A, Hongwei Industrial Park, Liuxian 2nd Road,
Bao'an District, Shenzhen, P.R.C. (518101)

Tel.: +86-755-33663308 Fax.: +86-755-33663309 Website: www.semtest.com.cn

Note: This test report is limited to the above client company and the product model only. It may not be duplicated without prior permitted by Shenzhen SEM Test Technology Co., Ltd.

TABLE OF CONTENTS

1. General Information	3
1.1 Product Description for Equipment Under Test (EUT)	3
1.2 Test Standards	5
1.3 Test Methodology	5
1.4 Test Facility	5
2. Summary of Test Results	6
3. Specific Absorption Rate (SAR)	7
3.1 Introduction	7
3.2 SAR Definition	7
4. SAR Measurement System	8
4.1 The Measurement System	8
4.2 Probe	8
4.3 Probe Calibration Process	10
4.4 Phantom	11
4.5 Device Holder	11
4.6 Test Equipment List	12
5. Tissue Simulating Liquids	13
5.1 Composition of Tissue Simulating Liquid	13
5.2 Tissue Dielectric Parameters for Head and Body Phantoms	14
5.3 Tissue Calibration Result	15
6. SAR Measurement Evaluation	16
6.1 Purpose of System Performance Check	16
6.2 System Setup	16
6.3 Validation Results	17
7. EUT Testing Position	18
7.4 Body Position	18
7.5 EUT Antenna Position	18
7.6 EUT Testing Position	19
8. SAR Measurement Procedures	20
8.1 Measurement Procedures	20
8.2 Spatial Peak SAR Evaluation	20
8.3 Area & Zoom Scan Procedures	21
8.4 Volume Scan Procedures	21
8.5 SAR Averaged Methods	21
8.6 Power Drift Monitoring	21
9. SAR Test Result	22
9.1 Conducted RF Output Power	22
9.2 Test Results for Standalone SAR Test	25
10. Measurement Uncertainty	27
10.1 Uncertainty for EUT SAR Test	27
10.2 Uncertainty for System Performance Check	28
Annex A. Plots of System Performance Check	30
Annex B. Plots of SAR Measurement	36
Annex C. EUT Photos	51
Annex D. Test Setup Photos	53
Annex E. Calibration Certificate	56

1. General Information

1.1 Product Description for Equipment Under Test (EUT)

Client Information

Applicant: ZillionSource Technologies (Shanghai) Co., Ltd.
Address of applicant: Suit 2D-18,1building,HuaShen Road, NO.198, Shanghai
Free Trade Zone, Shanghai, China

Manufacturer: ZillionSource Technologies (Shanghai) Co., Ltd.
Address of manufacturer: Suit 2D-18,1building,HuaShen Road, NO.198, Shanghai
Free Trade Zone, Shanghai, China

General Description of EUT	
Product Name:	Environmental variable collector for logistics
Brand Name:	Tubao
Model No.:	ZS-300
Adding Model:	ZS-301,ZS-302
Rated Voltage:	DC 3.7V Li-ion Battery
Battery Capacity:	3000mAh
<i>The EUT Main board support GSM850/900/DCS1800/PCS1900, WCDMA Band 2/5 function. It is intended for Multimedia Message Service (MMS) transmission, Environmental condition and GPS location monitoring. It is equipped with GPRS/EDGE class 12 for GSM850/900/DCS1800/PCS1900, GPS, and Wi-Fi functions. For more information see the following datasheet</i>	
<i>Note: The test data is gathered from a production sample, provided by the manufacturer. The appearance of others models listed in the report is different from main-test model ZS-300, but the circuit and the electronic construction do not change, declared by the manufacturer.</i>	

Technical Characteristics of EUT	
2G	
Support Networks:	GSM,GPRS,EDGE
Support Band:	GSM850/PCS1900
Uplink Frequency:	GSM 850: 824~849MHz GSM 1900: 1850~1910MHz
Downlink Frequency:	GSM 850: 869~894MHz GSM 1900: 1930~1990MHz
RF Output Power:	GSM850: 33.67dBm, GSM1900: 30.03dBm EDGE850: 26.41dBm, EDGE1900: 26.29dBm
Type of Modulation:	GMSK,8PSK
Antenna Type:	Internal Antenna
Antenna Gain:	GSM850: 0.70dBi; GSM1900: 1.92dBi
GPRS/EDGE Class:	Class 12

3G	
Support Networks:	WCDMA, HSDPA, HSUPA
Support Band:	WCDMA Band II, WCDMA Band V
Uplink Frequency:	WCDMA Band II: 1850~1910MHz WCDMA Band V: 824~849MHz
Downlink Frequency:	WCDMA Band II: 1930~1990MHz WCDMA Band V: 869~894MHz
RF Output Power:	WCDMA Band II: 22.70dBm, WCDMA Band V: 23.36dBm
Type of Modulation:	BPSK, QPSK, 16QAM
Antenna Type:	Integral Antenna
Antenna Gain:	WCDMA Band II: 1.92dBi, WCDMA Band V: 0.70dBi
WIFI	
Support Standards:	802.11b, 802.11g, 802.11n
Frequency Range:	2412-2462MHz for 802.11b/g/n(HT20)
RF Output Power:	15.42dBm (Conducted)
Type of Modulation:	CCK, OFDM, QPSK, BPSK, 16QAM, 64QAM
Data Rate:	1-11Mbps, 6-54Mbps, up to 65Mbps
Quantity of Channels:	11 for 802.11b/g/n(HT20)
Channel Separation:	5MHz
Antenna Type:	Integral Antenna
Antenna Gain:	0.5dBi

1.2 Test Standards

The following report is prepared on behalf of the ZillionSource Technologies (Shanghai) Co., Ltd. accordance with FCC 47 CFR Part 2.1093, ANSI/IEEE C95.1 :2005+A1:2010, KDB 865664 D01 v01r04, KDB 865664 D02 v01r02, KDB 447498 D01 v06, KDB 248227 D01 v02r02, and KDB 941225 D01 v03r01.

The objective is to determine compliance with FCC Part 2.1093 of the Federal Communication Commissions rules.

Maintenance of compliance is the responsibility of the manufacturer. Any modification of the product, which result in lowering the emission, should be checked to ensure compliance has been maintained.

1.3 Test Methodology

All measurements contained in this report were conducted with KDB 865664 D01 v01r04 and KDB 865664 D02 v01r02. The public notice KDB 447498 D01 v06 for Mobile and Portable Devices RF Exposure Procedure also.

1.4 Test Facility

FCC – Registration No.: 125990

Shenzhen SEM Test Technology Co., Ltd. Laboratory has been recognized to perform compliance testing on equipment subject to the Commissions Declaration Of Conformity (DOC). The Designation Number is CN5010, and Test Firm Registration Number is 125990.

Industry Canada (IC) Registration No.: 11464A

The 3m Semi-anechoic chamber of Shenzhen SEM.Test Technology Co., Ltd. has been registered by Certification and Engineering Bureau of Industry Canada for radio equipment testing with Registration No.: 11464A.

2. Summary of Test Results

The maximum results of Specific Absorption Rate (SAR) have found during testing are as follows:

Frequency Band	Body (5mm Gap)	SAR _{1g} Limit (W/kg)
	Maximum SAR _{1g} (W/kg)	
GSM850	0.793	1.6
GSM1900	1.159	1.6
WCDMA Band V	0.652	1.6
WCDMA Band II	1.240	1.6
WLAN 2.4GHz	0.041	1.6

*The highest reported SAR values for body are **1.240 W/kg***

The device is in compliance with Specific Absorption Rate (SAR) for general population/uncontrolled exposure limits (1.6 W/kg) specified in FCC 47 CFR Part 2.1093 and ANSI/IEEE C95.1 :2005+A1:2010, and had been tested in accordance with the measurement methods and procedure specified in IEEE 1528-2013 and KDB 865664 D01 v01r04 and KDB 865664 D02 v01r02

3. Specific Absorption Rate (SAR)

3.1 Introduction

SAR is related to the rate at which energy is absorbed per unit mass in an object exposed to a radio field. The SAR distribution in a biological body is complicated and is usually carried out by experimental techniques or numerical modeling. The standard recommends limits for two tiers of groups, occupational/controlled and general population/uncontrolled, based on a person's awareness and ability to exercise control over his or her exposure. In general, occupational/controlled exposure limits are higher than the limits for general population/uncontrolled.

3.2 SAR Definition

The SAR definition is the time derivative (rate) of the incremental energy (dW) absorbed by (dissipated in) an incremental mass (dm) contained in a volume element (dv) of a given density (ρ). The equation description is as below:

$$\text{SAR} = \frac{d}{dt} \left(\frac{dW}{dm} \right) = \frac{d}{dt} \left(\frac{dW}{\rho dv} \right)$$

SAR is expressed in units of Watts per kilogram (W/kg)

SAR measurement can be either related to the temperature elevation in tissue by

$$\text{SAR} = C \left(\frac{\delta T}{\delta t} \right)$$

Where: C is the specific heat capacity, δT is the temperature rise and δt is the exposure duration, or related to the electrical field in the tissue by

$$\text{SAR} = \frac{\sigma |E|^2}{\rho}$$

Where: σ is the conductivity of the tissue, ρ is the mass density of the tissue and E is the RMS electrical field strength.

However for evaluating SAR of low power transmitter, electrical field measurement is typically applied.

4. SAR Measurement System

4.1 The Measurement System

Comosar is a system that is able to determine the SAR distribution inside a phantom of human being according to different standards. The Comosar system consists of the following items:

- Main computer to control all the system
- 6 axis robot
- Data acquisition system
- Miniature E-field probe
- Phone holder
- Head simulating tissue

The following figure shows the system.



The EUT under test operating at the maximum power level is placed in the phone holder, under the phantom, which is filled with head simulating liquid. The E-Field probe measures the electric field inside the phantom. The OpenSAR software computes the results to give a SAR value in a 1g or 10g mass.

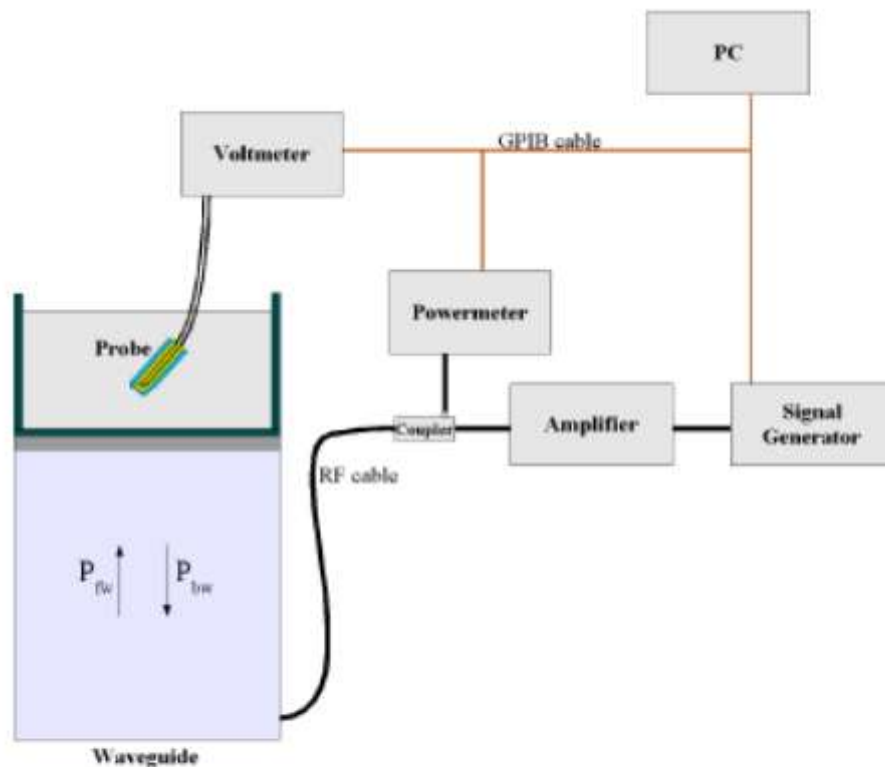
4.2 Probe

For the measurements the Specific Dosimetric E-Field Probe SSE5 SN 09/13 EP168 with following specifications is used

- Dynamic range: 0.01-100 W/kg
- Probe Length: 330 mm
- Length of Individual Dipoles: 4.5 mm
- Maximum external diameter: 8 mm
- Probe Tip External Diameter : 5 mm
- Distance between dipoles / probe extremity: 2.7mm

- Probe linearity: <0.25 dB
 - Axial Isotropy: <0.25 dB
 - Spherical Isotropy: <0.50 dB
 - Calibration range: 700 to 3000MHz for head & body simulating liquid.
- Angle between probe axis (evaluation axis) and surface normal line: less than 30°

Probe calibration is realized, in compliance with EN 62209-1 and IEEE 1528 STD, with CALISAR, Antennessa proprietary calibration system. The calibration is performed with the EN 62209-1 annexe technique using reference guide at the five frequencies.



$$SAR = \frac{4(P_{fw} - P_{bw})}{ab\delta} \cos^2\left(\pi \frac{y}{a}\right) e^{-(2z/\delta)}$$

Where :

P_{fw} = Forward Power

P_{bw} = Backward Power

a and b = Waveguide dimensions

δ = Skin depth

Keithley configuration:

Rate = Medium; Filter = ON; RDGS = 10; Filter type = Moving Average; Range auto after each calibration, a SAR measurement is performed on a validation dipole and compared with a NPL calibrated probe, to verify it.

The calibration factors, CF(N), for the 3 sensors corresponding to dipole 1, dipole 2 and dipole 3 are:

$$CF(N)=SAR(N)/Vlin(N) \text{ (N=1,2,3)}$$

The linearised output voltage Vlin(N) is obtained from the displayed output voltage V(N) using

$$Vlin(N)=V(N)*(1+V(N)/DCP(N)) \text{ (N=1,2,3)}$$

where DCP is the diode compression point in mV.

4.3 Probe Calibration Process

Dosimetric Assessment Procedure

Each E-Probe/Probe Amplifier combination has unique calibration parameters. SATIMO Probe calibration procedure is conducted to determine the proper amplifier settings to enter in the probe parameters. The amplifier settings are determined for a given frequency by subjecting the probe to a known E-field density (1 mW/cm²) using an with CALISAR, Antenna proprietary calibration system.

Free Space Assessment Procedure

The free space E-field from amplified probe outputs is determined in a test chamber. This calibration can be performed in a TEM cell if the frequency is below 1 GHz and in a waveguide or other methodologies above 1 GHz for free space. For the free space calibration, the probe is placed in the volumetric center of the cavity and at the proper orientation with the field. The probe is rotated 360 degrees until the three channels show the maximum reading. The power density readings equates to 1mW/cm².

Temperature Assessment Procedure

E-field temperature correlation calibration is performed in a flat phantom filled with the appropriate simulated head tissue. The E-field in the medium correlates with the temperature rise in the dielectric medium. For temperature correlation calibration a RF transparent thermistor-based temperature probe is used in conjunction with the E-field probe.

Where:

$$SAR = C \frac{\Delta T}{\Delta t}$$

Δt = exposure time (30 seconds),

C = heat capacity of tissue (brain or muscle),

ΔT = temperature increase due to RF exposure.

SAR is proportional to $\Delta T / \Delta t$, the initial rate of tissue heating, before thermal diffusion takes place. The electric field in the simulated tissue can be used to estimate SAR by equating the thermally derived SAR to that with the E- field component.

$$SAR = \frac{|E|^2 \cdot \sigma}{\rho}$$

Where:

σ = simulated tissue conductivity,

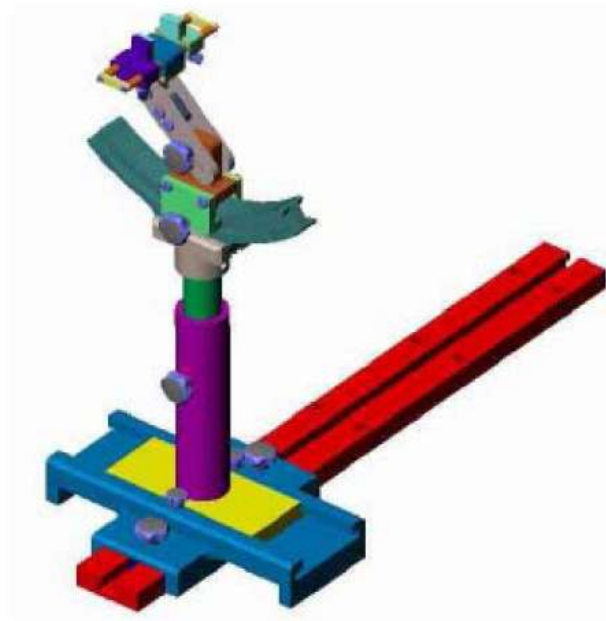
ρ = Tissue density (1.25 g/cm³ for brain tissue)

4.4 Phantom

For the measurements the Specific Anthropomorphic Mannequin (SAM) defined by the IEEE SCC-34/SC2 group is used. The phantom is a polyurethane shell integrated in a wooden table. The thickness of the phantom amounts to 2mm +/- 0.2mm. It enables the dosimetric evaluation of left and right phone usage and includes an additional flat phantom part for the simplified performance check. The phantom set-up includes a cover, which prevents the evaporation of the liquid.

4.5 Device Holder

The positioning system allows obtaining cheek and tilting position with a very good accuracy. In compliance with CENELEC, the tilt angle uncertainty is lower than 1 °.



System Material	Permittivity	Loss Tangent
Delrin	3.7	0.005

4.6 Test Equipment List

Description	Manufacturer	Model	Serial Number	Cal. Date	Due. Date
E-Field Probe	MVG	SSE5	SN 09/13 EP168	2017-06-01	2018-05-31
835MHz Dipole	MVG	SID835	SN 47/12 DIP 0G835-204	2018-03-20	2019-03-19
1900MHz Dipole	MVG	SID1900	SN 47/12 DIP 1G900-207	2018-03-20	2019-03-19
2450MHz Dipole	SATIMO	SID2450	SN 13/15 DIP 2G450-364	2018-03-20	2019-03-19
Dielectric Probe Kit	MVG	SCLMP	SN 47/12 OCPG49	2018-03-20	2019-03-19
SAM Phantom	MVG	SAM	SN/ 47/12 SAM95	N/A	N/A
MULTIMETER	KEITHLEY	Keithley 2000	4006367	2017-06-12	2018-06-11
Signal Generator	Rohde & Schwarz	SMR20	100047	2017-06-12	2018-06-11
Universal Tester	Rohde & Schwarz	CMU200	112012	2017-06-12	2018-06-11
Network Analyzer	HP	8753C	2901A00831	2017-06-12	2018-06-11
Directional Couplers	Agilent	778D	20160	2017-06-12	2018-06-11

5. Tissue Simulating Liquids

5.1 Composition of Tissue Simulating Liquid

For the measurement of the field distribution inside the SAM phantom with SMTIMO, the phantom must be filled with around 25 liters of homogeneous body tissue simulating liquid. For head SAR testing, the liquid height from the ear reference point (ERP) of the phantom to the liquid top surface is larger than 15 cm. For body SAR testing, the liquid height from the center of the flat phantom to the liquid top surface is larger than 15 cm. Please see the following photos for the liquid height.



Liquid Height for Head SAR



Liquid Height for Body SAR

The Composition of Tissue Simulating Liquid

Frequency (MHz)	Water (%)	Salt (%)	Sugar (%)	HEC (%)	Preventol (%)	DGBE (%)
Body						
835	50.8	0.9	48.2	0	0.1	0.00
1900	70.2	0.4	0	0	0	29.4
2450	68.6	0.1	0	0	0	31.3

5.2 Tissue Dielectric Parameters for Head and Body Phantoms

The head tissue dielectric parameters recommended by the IEEE SCC-34/SC-2 in P1528 have been incorporated in the following table. These head parameters are derived from planar layer models simulating the highest expected SAR for the dielectric properties and tissue thickness variations in a human head. Other head and body tissue parameters that have not been specified in P1528 are derived from the tissue dielectric parameters computed from the 4-Cole-Cole equations described in Reference [12] and extrapolated according to the head parameters specified in P1528.

Target Frequency (MHz)	Head		Body	
	Conductivity (σ)	Permittivity (ϵ_r)	Conductivity (σ)	Permittivity (ϵ_r)
150	0.76	52.3	0.80	61.9
300	0.87	45.3	0.92	58.2
450	0.87	43.5	0.94	56.7
835	0.90	41.5	0.97	55.2
900	0.97	41.5	1.05	55.0
915	0.98	41.5	1.06	55.0
1450	1.20	40.5	1.30	54.0
1610	1.29	40.3	1.40	53.8
1800-2000	1.40	40.0	1.52	53.3
2450	1.80	39.2	1.95	52.7
3000	2.40	38.5	2.73	52.0
5800	5.27	35.3	6.00	48.2

5.3 Tissue Calibration Result

The dielectric parameters of the liquids were verified prior to the SAR evaluation using COMOSAR Dielectric Probe Kit and an Agilent Network Analyzer.

Calibration Result for Dielectric Parameters of Tissue Simulating Liquid

Body Tissue Simulating Liquid									
Freq. MHz.	Temp. (°C)	Conductivity			Permittivity			Limit (%)	Date
		Reading (σ)	Target (σ)	Delta (%)	Reading (ϵ_r)	Target (ϵ_r)	Delta (%)		
835	21.2	0.95	0.97	-2.06	54.85	55.20	-0.63	± 5	2018-05-07
1900	21.3	1.50	1.52	-1.32	52.42	53.30	-1.65	± 5	2018-05-07
2450	21.3	2.00	1.95	2.56	52.3	52.7	-0.76	± 5	2018-05-08

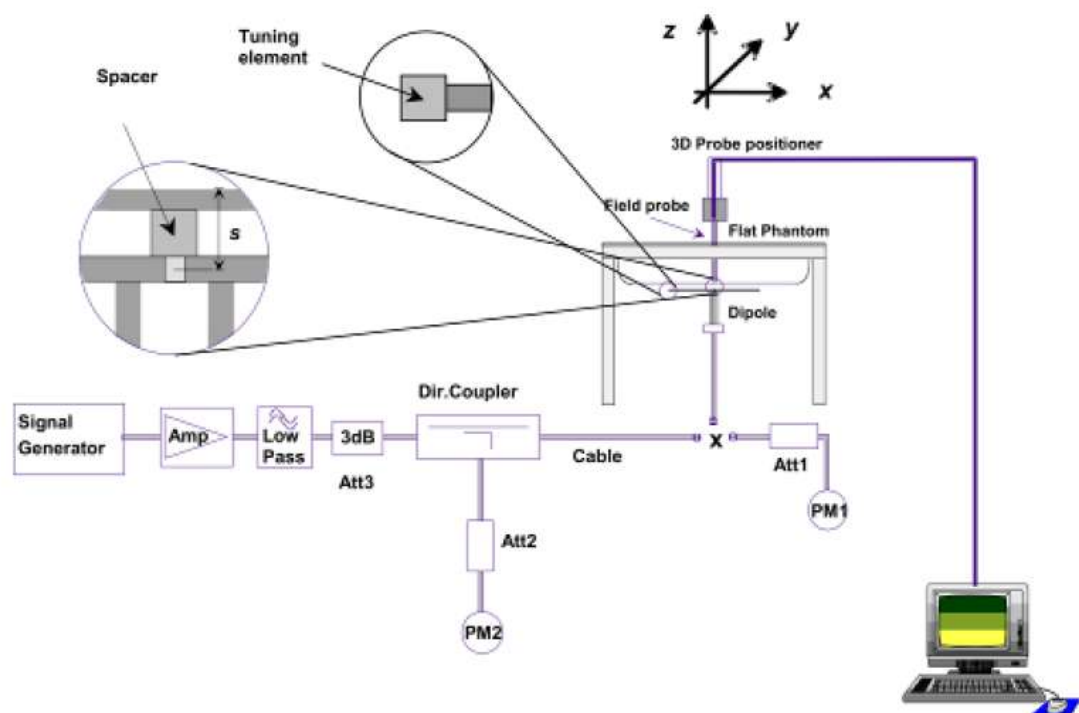
6. SAR Measurement Evaluation

6.1 Purpose of System Performance Check

The system performance check verifies that the system operates within its specifications. System and operator errors can be detected and corrected. It is recommended that the system performance check be performed prior to any usage of the system in order to guarantee reproducible results. The system performance check uses normal SAR measurements in a simplified setup with a well characterized source. This setup was selected to give a high sensitivity to all parameters that might fail or vary over time. The system check does not intend to replace the calibration of the components, but indicates situations where the system uncertainty is exceeded due to drift or failure.

6.2 System Setup

In the simplified setup for system evaluation, the EUT is replaced by a calibrated dipole and the power source is replaced by a continuous wave which comes from a signal generator at frequency 835 MHz and 1900MHz. The calibrated dipole must be placed beneath the flat phantom section of the SAM twin phantom with the correct distance holder. The distance holder should touch the phantom surface with a light pressure at the reference marking and be oriented parallel to the long side of the phantom.



System Verification Setup Block Diagram



Setup Photo of Dipole Antenna

The output power on dipole port must be calibrated to 24 dBm (250 mW) before dipole is connected.

6.3 Validation Results

Comparing to the original SAR value provided by SATIMO, the validation data should be within its specification of 10 %. Table 6.1 shows the target SAR and measured SAR after normalized to 1W input power. The table below indicates the system performance check can meet the variation criterion.

Frequency	Targeted SAR _{1g}	Measured SAR _{1g}	Normalized SAR _{1g}	Tolerance
MHz	(W/kg)	(W/kg)	(W/kg)	(%)
Body				
835	9.38	2.36	9.44	0.64
1900	39.10	9.80	39.2	0.26
2450	50.41	12.60	50.4	-0.02

Targeted and Measurement SAR

Please refer to Annex A for the plots of system performance check.

7. EUT Testing Position

7.4 Body Position

- To position the device parallel to the phantom surface with each side.
- To adjust the device parallel to the flat phantom.
- To adjust the distance between the device surface and the flat phantom to 5mm.

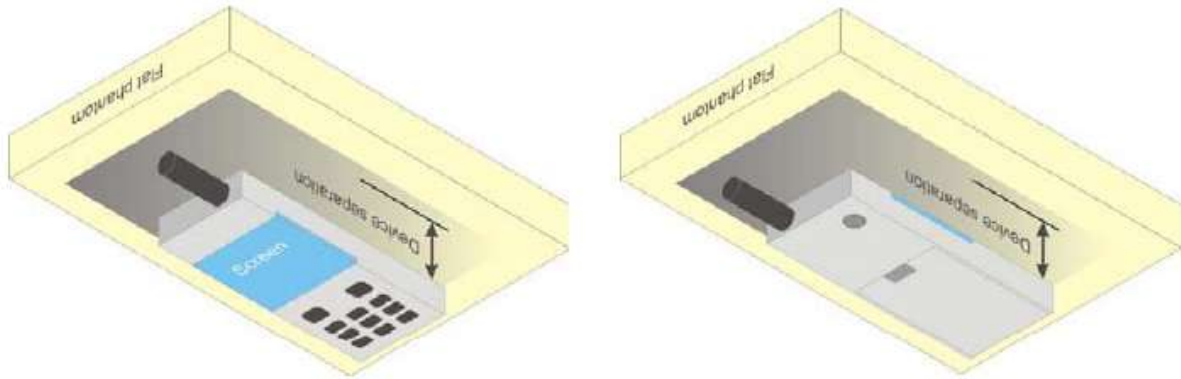
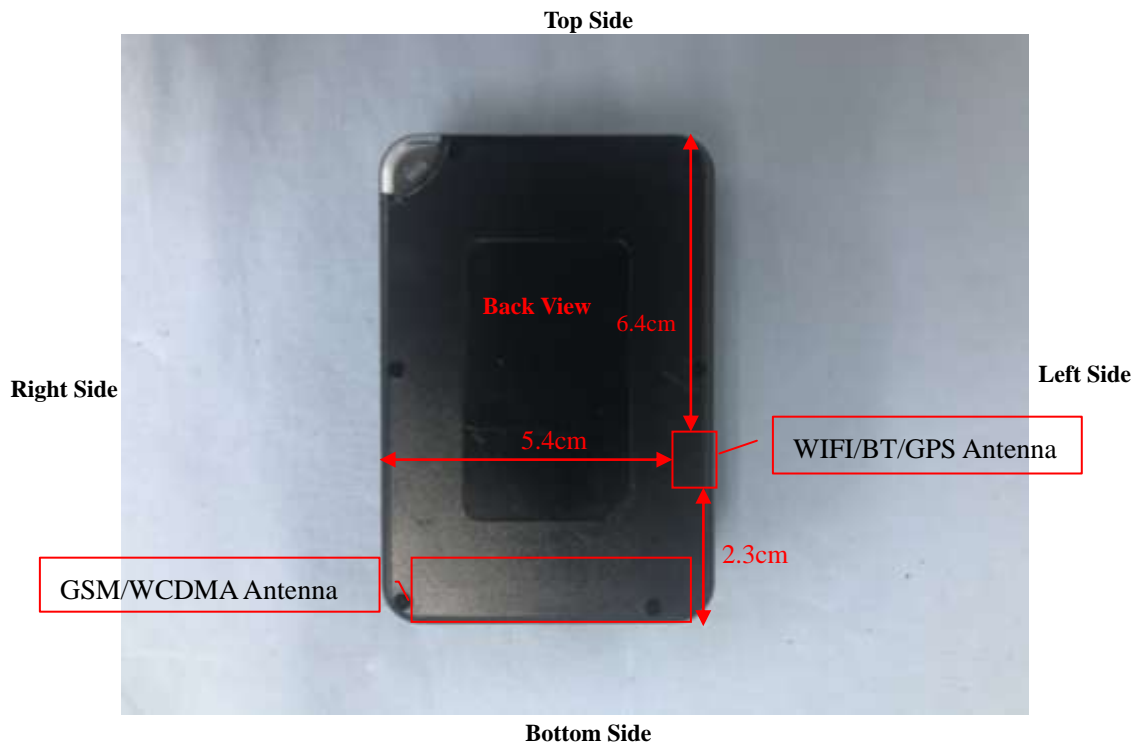


Illustration for Body Position

7.5 EUT Antenna Position



Block Diagram for EUT Antenna Position

7.6 EUT Testing Position

Body mode SAR assessments are required for this device. This EUT was tested in different positions for different SAR test modes, more information as below:

Body SAR tests, Test distance: 5mm						
Antennas	Front	Back	Right Side	Left Side	Top Side	Bottom Side
WWAN	Yes	Yes	Yes	Yes	No	Yes
WLAN	Yes	Yes	No	Yes	No	Yes

Remark:

1. Referring to KDB 447498 D01 v06, the test separation distances is 5 mm. SAR must be measured for all sides and surfaces with a transmitting antenna located within 25mm from that surface or edge.

Please refer to Annex D for the EUT test setup photos.

8. SAR Measurement Procedures

8.1 Measurement Procedures

The measurement procedures are as follows:

- (a) Use base station simulator (if applicable) or engineering software to transmit RF power continuously (continuous Tx) in the highest power channel.
- (b) Keep EUT to radiate maximum output power or 100% factor (if applicable)
- (c) Measure output power through RF cable and power meter.
- (d) Place the EUT in the positions as Annex D demonstrates.
- (e) Set scan area, grid size and other setting on the SATIMO software.
- (f) Measure SAR results for the highest power channel on each testing position.
- (g) Find out the largest SAR result on these testing positions of each band
- (h) Measure SAR results for other channels in worst SAR testing position if the SAR of highest power channel is larger than 0.8 W/kg

According to the test standard, the recommended procedure for assessing the peak spatial-average SAR value consists of the following steps:

- (a) Power reference measurement
- (b) Area scan
- (c) Zoom scan
- (d) Power drift measurement

8.2 Spatial Peak SAR Evaluation

The procedure for spatial peak SAR evaluation has been implemented according to the test standard. It can be conducted for 1g and 10g, as well as for user-specific masses. The SATIMO software includes all numerical procedures necessary to evaluate the spatial peak SAR value.

The base for the evaluation is a "cube" measurement. The measured volume must include the 1g and 10g cubes with the highest averaged SAR values. For that purpose, the center of the measured volume is aligned to the interpolated peak SAR value of a previously performed area scan.

The entire evaluation of the spatial peak values is performed within the post-processing engine. The system always gives the maximum values for the 1g and 10g cubes. The algorithm to find the cube with highest averaged SAR is divided into the following stages:

- (a) Extraction of the measured data (grid and values) from the Zoom Scan
- (b) Calculation of the SAR value at every measurement point based on all stored data
- (c) Generation of a high-resolution mesh within the measured volume
- (d) Interpolation of all measured values from the measurement grid to the high-resolution grid
- (e) Extrapolation of the entire 3D field distribution to the phantom surface over the distance from sensor to surface
- (f) Calculation of the averaged SAR within masses of 1g and 10g

8.3 Area & Zoom Scan Procedures

First Area Scan is used to locate the approximate location(s) of the local peak SAR value(s). The measurement grid within an Area Scan is defined by the grid extent, grid step size and grid offset. Next, in order to determine the EM field distribution in a three-dimensional spatial extension, Zoom Scan is required. The Zoom Scan measures 5x5x7 points with step size 8, 8 and 5 mm for 300 MHz to 3 GHz, and 8x8x8 points with step size 4, 4 and 2.5 mm for 3 GHz to 6 GHz. The Zoom Scan is performed around the highest E-field value to determine the averaged SAR-distribution over 10 g.

8.4 Volume Scan Procedures

The volume scan is used for assess overlapping SAR distributions for antennas transmitting in different frequency bands. It is equivalent to an oversized zoom scan used in standalone measurements. The measurement volume will be used to enclose all the simultaneous transmitting antennas. For antennas transmitting simultaneously in different frequency bands, the volume scan is measured separately in each frequency band. In order to sum correctly to compute the 1g aggregate SAR, the EUT remain in the same test position for all measurements and all volume scan use the same spatial resolution and grid spacing (step-size is 4, 4 and 2.5 mm). When all volume scan were completed, the software can combine and subsequently superpose these measurement data to calculating the multiband SAR.

8.5 SAR Averaged Methods

The local SAR inside the phantom is measured using small dipole sensing elements inside a probe body. The probe tip must not be in contact with the phantom surface in order to minimize measurements errors, but the highest local SAR will occur at the surface of the phantom.

An extrapolation is using to determinate this highest local SAR values. The extrapolation is based on a fourth-order least-square polynomial fit of measured data. The local SAR value is then extrapolated from the liquid surface with a 1mm step.

The measurements have to be performed over a limited time (due to the duration of the battery) so the step of measurement is high. It could vary between 5 and 8 mm. To obtain an accurate assessment of the maximum SAR averaged over 10g and 1 g requires a very fine resolution in the three dimensional scanned data array.

8.6 Power Drift Monitoring

All SAR testing is under the EUT install full charged battery and transmit maximum output power. In SATIMO measurement software, the power reference measurement and power drift measurement procedures are used for monitoring the power drift of EUT during SAR test. Both these procedures measure the field at a specified reference position before and after the SAR testing. The software will calculate the field difference in dB. If the power drift more than 5%, the SAR will be retested.

9. SAR Test Result

9.1 Conducted RF Output Power

GSM - Burst Average Power (dBm)						
Band	GSM850			PCS1900		
Channel	128	190	251	512	661	810
Frequency (MHz)	824.2	836.4	848.8	1850.2	1880	1909.8
GSM	33.67	33.45	33.47	29.58	29.58	30.03
GPRS (1 slot)	33.54	33.21	33.05	29.21	29.20	29.65
GPRS (2 slots)	32.15	31.52	31.29	26.82	27.10	27.57
GPRS (3 slots)	29.39	29.22	29.16	25.22	25.48	25.89
GPRS (4 slots)	28.29	28.31	27.97	22.08	22.38	22.16
EDGE (1 slot)	26.41	26.34	26.35	26.16	26.29	26.28
EDGE (2 slots)	26.08	26.22	26.20	25.52	25.56	25.64
EDGE (3 slots)	26.01	25.87	25.86	24.04	24.02	24.12
EDGE (4 slots)	25.65	25.60	25.59	22.38	22.16	22.08

GSM - Source-Based Time-Average Power (dBm)						
Band	GSM850			PCS1900		
Channel	128	190	251	512	661	810
Frequency (MHz)	824.2	836.4	848.8	1850.2	1880	1909.8
GSM	24.67	24.45	24.47	20.58	20.58	21.03
GPRS (1 slot)	24.54	24.21	24.05	20.21	20.20	20.65
GPRS (2 slots)	26.15	25.52	25.29	20.82	21.10	21.57
GPRS (3 slots)	25.14	24.97	24.91	20.97	21.23	21.64
GPRS (4 slots)	25.29	25.31	24.97	19.08	19.38	19.16
EDGE (1 slot)	17.41	17.34	17.35	17.16	17.29	17.28
EDGE (2 slots)	20.08	20.22	20.20	19.52	19.56	19.64
EDGE (3 slots)	21.76	21.62	21.61	19.79	19.77	19.87
EDGE (4 slots)	22.65	22.60	22.59	19.38	19.16	19.08

Note: The source-based time-averaged power is linearly scaled the maximum burst averaged power based on time slots. The calculated method are shown as below:

Source based time-average power = Burst averaged power - Duty cycle factor in dB

Remark:

1. For Body SAR testing, GPRS should be evaluated, therefore the EUT was set in GPRS (2Tx slots) for GSM850 and GPRS (3Tx slots) for GSM1900 due to its highest source-based time-average power.
2. Per KDB 447498 D01 v06, the maximum output power channel is used for SAR testing and for further SAR test reduction.

WCDMA - Average Power (dBm)						
Band	WCDMA Band II			WCDMA Band V		
Channel	9262	9400	9538	4132	4183	4233
Frequency (MHz)	1852.4	1880.0	1907.6	826.4	836.6	846.6
RMC 12.2k	22.58	22.45	22.70	23.36	22.98	23.28
HSDPA Subtest-1	22.21	22.06	22.10	22.67	22.62	22.72
HSDPA Subtest-2	22.18	22.02	22.05	22.61	22.60	22.68
HSDPA Subtest-3	22.17	22.05	22.06	22.65	22.58	22.67
HSDPA Subtest-4	22.15	22.04	22.08	22.64	22.56	22.71
HSUPA Subtest-1	22.18	21.99	21.57	22.33	22.33	22.66
HSUPA Subtest-2	22.16	21.96	21.53	22.3	22.3	22.63
HSUPA Subtest-3	22.15	21.95	21.54	22.31	22.31	22.64
HSUPA Subtest-4	22.14	21.96	21.54	22.3	22.32	22.63
HSUPA Subtest-5	22.15	21.94	21.56	22.28	22.28	22.64

Remark:

1. For Body SAR, per KDB 941225 D01 v03r01, RMC 12.2kbps setting is used to evaluate SAR. If HSDPA subset-1 output power is < 1/4 dB higher than RMC, and SAR with RMC 12.2kbps setting is $\leq 1.2\text{W/kg}$, HSDPA SAR evaluation can be excluded.
2. GSM and WCDMA share the same antenna, and cannot transmit simultaneously.

WLAN - Maximum Average Power				
Test Mode	Data Rate	Channel	Frequency (MHz)	Average Power (dBm)
802.11b	1Mbps	CH 01	2412	15.42
		CH 06	2437	15.29
		CH 11	2462	15.19
802.11g	54Mbps	CH 01	2412	11.03
		CH 06	2437	11.17
		CH 11	2462	10.89
802.11n (20MHz)	MCS7	CH 01	2412	11.1
		CH 06	2437	11.4
		CH 11	2462	11.55

Remark:

1. Per KDB 248227 D01 v02r02, For 802.11b DSSS SAR measurements, DSSS SAR procedure applies to fixed exposure test position and initial test position procedure applies to multiple exposure test positions.
2. Per KDB 248227 D01 v02r02, For 802.11b DSSS SAR measurements ,when the reported SAR of the highest measured maximum output power channel (see 3.1) for the exposure configuration is ≤ 0.8 W/kg, no further SAR testing is required for 802.11b DSSS in that exposure configuration. When the reported SAR is > 0.8 W/kg, SAR is required for that exposure configuration using the next highest measured output power channel. When any reported SAR is > 1.2 W/kg, SAR is required for the third channel; i.e., all channels require testing.
- 3 .For OFDM modes (802.11g/n), SAR is not required when the highest reported SAR for DSSS is adjusted by the ratio of OFDM to DSSS specified maximum output power and it is ≤ 1.2 W/kg.
4. WLAN and GSM/WCDMA antenna, cannot transmit simultaneously.

9.2 Test Results for Standalone SAR Test

Body SAR

GSM850 – Body SAR Test (Gap: 5mm)									
Plot No.	Mode	Test Position Body	Frequency		Output Power (dBm)	Rated Limit (dBm)	Scaling Factor	SAR1g (W/kg)	Scaled SAR1g (W/kg)
			CH.	MHz					
1.	GSM	Back Side	128	824.2	33.67	34.0	1.079	0.213	0.230
2.	GSM	Front Side	128	824.2	33.67	34.0	1.079	0.358	0.386
3.	GSM	Bottom side	128	824.2	33.67	34.0	1.079	0.106	0.114
4.	GSM	Right side	128	824.2	33.67	34.0	1.079	0.022	0.024
5.	GSM	Left side	128	824.2	33.67	34.0	1.079	0.012	0.013

GSM850 – Body SAR Test (Gap: 5mm)									
Plot No.	Mode	Test Position Body	Frequency		Output Power (dBm)	Rated Limit (dBm)	Scaling Factor	SAR1g (W/kg)	Scaled SAR1g (W/kg)
			CH.	MHz					
6.	GPRS_2TX	Back Side	128	824.2	32.15	32.5	1.084	0.564	0.611
7.	GPRS_2TX	Front Side	128	824.2	32.15	32.5	1.084	0.732	0.793
8.	GPRS_2TX	Bottom side	128	824.2	32.15	32.5	1.084	0.201	0.218
9.	GPRS_2TX	Right side	128	824.2	32.15	32.5	1.084	0.078	0.085
10.	GPRS_2TX	Left side	128	824.2	32.15	32.5	1.084	0.012	0.013
1st	GPRS_2TX	Front Side	128	824.2	32.15	32.5	1.084	0.726	0.787

GSM1900 – Body SAR Test (Gap: 5mm)									
Plot No.	Mode	Test Position Body	Frequency		Output Power (dBm)	Rated Limit (dBm)	Scaling Factor	SAR1g (W/kg)	Scaled SAR1g (W/kg)
			CH.	MHz					
11.	GSM	Back Side	810	1909.8	30.03	30.5	1.114	0.234	0.261
12.	GSM	Front Side	810	1909.8	30.03	30.5	1.114	0.449	0.500
13.	GSM	Bottom side	810	1909.8	30.03	30.5	1.114	0.143	0.159
14.	GSM	Right side	810	1909.8	30.03	30.5	1.114	0.065	0.072
15.	GSM	Left side	810	1909.8	30.03	30.5	1.114	0.023	0.026

GSM1900 – Body SAR Test (Gap: 5mm)									
Plot No.	Mode	Test Position Body	Frequency		Output Power (dBm)	Rated Limit (dBm)	Scaling Factor	SAR1g (W/kg)	Scaled SAR1g (W/kg)
			CH.	MHz					
16.	GPRS_3TX	Back Side	810	1909.8	25.89	26.0	1.026	0.771	0.791
17.	GPRS_3TX	Front Side	810	1909.8	25.89	26.0	1.026	1.130	1.159
18.	GPRS_3TX	Front Side	512	1850.2	25.22	26.0	1.197	0.915	1.095
19.	GPRS_3TX	Front Side	661	1880.0	25.48	26.0	1.127	1.001	1.128

20.	GPRS_3TX	Bottom side	810	1909.8	25.89	26.0	1.026	0.536	0.550
21.	GPRS_3TX	Right side	810	1909.8	25.89	26.0	1.026	0.332	0.341
22.	GPRS_3TX	Left side	810	1909.8	25.89	26.0	1.026	0.263	0.270
1st	GPRS_3TX	Front Side	810	1909.8	25.89	26.0	1.026	1.101	1.129

WCDMA Band V – Body SAR Test (Gap: 5mm)									
Plot No.	Mode	Test Position Body	Frequency		Output Power (dBm)	Rated Limit (dBm)	Scaling Factor	SAR1g (W/kg)	Scaled SAR1g (W/kg)
			CH.	MHz					
23.	RMC 12.2k	Back Side	4132	826.4	23.36	23.5	1.033	0.379	0.391
24.	RMC 12.2k	Front Side	4132	826.4	23.36	23.5	1.033	0.631	0.652
25.	RMC 12.2k	Bottom side	4132	826.4	23.36	23.5	1.033	0.167	0.172
26.	RMC 12.2k	Right side	4132	826.4	23.36	23.5	1.033	0.051	0.053
27.	RMC 12.2k	Left side	4132	826.4	23.36	23.5	1.033	0.034	0.035

WCDMA Band II – Body SAR Test (Gap: 5mm)									
Plot No.	Mode	Test Position Body	Frequency		Output Power (dBm)	Rated Limit (dBm)	Scaling Factor	SAR1g (W/kg)	Scaled SAR1g (W/kg)
			CH.	MHz					
28.	RMC 12.2k	Back Side	9538	1907.6	22.70	23.0	1.072	0.697	0.747
29.	RMC 12.2k	Front Side	9538	1907.6	22.70	23.0	1.072	1.157	1.240
30.	RMC 12.2k	Front Side	9262	1852.4	22.58	23.0	1.102	1.013	1.116
31.	RMC 12.2k	Front Side	9400	1880.0	22.45	23.0	1.135	0.906	1.028
32.	RMC 12.2k	Bottom side	9538	1907.6	22.70	23.0	1.072	0.667	0.715
33.	RMC 12.2k	Right side	9538	1907.6	22.70	23.0	1.072	0.361	0.387
34.	RMC 12.2k	Left side	9538	1907.6	22.70	23.0	1.072	0.297	0.318
1st	RMC 12.2k	Front Side	9538	1907.6	22.70	23.0	1.072	1.111	1.190

WLAN 2.4GHz –Body SAR Test(Gap: 5mm)									
Plot No.	Mode	Test Position Body	Frequency		Output Power (dBm)	Rated Limit (dBm)	Scaling Factor	SAR1g (W/kg)	Scaled SAR1g (W/kg)
			CH.	MHz					
35.	802.11b	Back Side	01	2412	15.42	15.5	1.019	0.015	0.015
36.	802.11b	Front Side	01	2412	15.42	15.5	1.019	0.040	0.041
37.	802.11b	Left side	01	2412	15.42	15.5	1.019	0.011	0.011
38.	802.11b	Bottom side	01	2412	15.42	15.5	1.019	0.021	0.021

Remark:1. Per KDB447498 D01 v06, if the highest output channel SAR for each exposure position ≤ 0.8 W/kg other channels SAR tests are not necessary.

10. Measurement Uncertainty

10.1 Uncertainty for EUT SAR Test

a	b	c	d	e= f(d,k)	f	g	h= c*f/e	i= c*g/e	k
Uncertainty Component	Sec.	Tol (+-%)	Prob. Dist.	Div.	Ci (1g)	Ci (10g)	1g Ui (+-%)	10g Ui (+-%)	Vi
Measurement System									
Probe calibration	E.2.1	7.0	N	1	1	1	7.00	7.00	∞
Axial Isotropy	E.2.2	2.5	R	$\sqrt{3}$	$(1_{Cp})^{1/2}$	$(1_{Cp})^{1/2}$	1.02	1.02	∞
Hemispherical Isotropy	E.2.2	4.0	R	$\sqrt{3}$	$(Cp)^{1/2}$	$(Cp)^{1/2}$	1.63	1.63	∞
Boundary effect	E.2.3	1.0	R	$\sqrt{3}$	1	1	0.58	0.58	∞
Linearity	E.2.4	5.0	R	$\sqrt{3}$	1	1	2.89	2.89	∞
System detection limits	E.2.5	1.0	R	$\sqrt{3}$	1	1	0.58	0.58	∞
Readout Electronics	E.2.6	0.02	N	1	1	1	0.02	0.02	∞
Reponse Time	E.2.7	3.0	R	$\sqrt{3}$	1	1	1.73	1.73	∞
Integration Time	E.2.8	2.0	R	$\sqrt{3}$	1	1	1.15	1.15	∞
RF ambient Conditions – Noise	E.6.1	3.0	R	$\sqrt{3}$	1	1	1.73	1.73	∞
RF ambient Conditions - Reflections	E.6.1	3.0	R	$\sqrt{3}$	1	1	1.73	1.73	∞
Probe positioner Mechanical Tolerance	E.6.2	2.0	R	$\sqrt{3}$	1	1	1.15	1.15	∞
Probe positioning with respect to Phantom Shell	E.6.3	0.05	R	$\sqrt{3}$	1	1	0.03	0.03	∞
Extrapolation, interpolation and integration Algorithms for Max. SAR Evaluation	E.5	5.0	R	$\sqrt{3}$	1	1	2.89	2.89	∞
Test Sample Related									
Test sample positioning	E.4.2	0.03	N	1	1	1	0.03	0.03	N-1
Device Holder Uncertainty	E.4.1	5.00	N	1	1	1	5.00	5.00	
Output power Variation - SAR drift measurement	E.2.9	12.02	R	$\sqrt{3}$	1	1	6.94	6.94	∞
SAR scaling	E6.5	0.0	R	$\sqrt{3}$	1	1	0.0	0.0	∞
Phantom and Tissue Parameters									
Phantom Uncertainty (Shape and thickness tolerances)	E.3.1	0.05	R	$\sqrt{3}$	1	1	0.03	0.03	∞
Uncertainty in SAR correction for deviations in permittivity and conductivity	E3.2	1.9	R	$\sqrt{3}$	1	0.84	1.10	0.90	∞
Liquid conductivity - deviation	E.3.2	5.00	R	$\sqrt{3}$	0.64	0.43	1.85	1.24	∞

from target value										
Liquid conductivity - measurement uncertainty	E.3.3	5.00	N	1	0.64	0.43	3.20	2.15	∞	
Liquid permittivity - deviation from target value	E.3.2	0.37	R	$\sqrt{3}$	0.6	0.49	0.13	0.10	∞	
Liquid permittivity - measurement uncertainty	E.3.3	10.00	N	1	0.6	0.49	6.00	4.90	∞	
Combined Standard Uncertainty			RSS				12.98	12.53		
Expanded Uncertainty (95% Confidence interval)			K=2				25.32	24.43		

10.2 Uncertainty for System Performance Check

a	b	c	d	e= f(d,k)	f	g	h= c*f/e	i= c*g/e	k
Uncertainty Component	Sec.	Tol (+-%)	Prob. Dist.	Div.	Ci (1g)	Ci (10g)	1g Ui (+-%)	10g Ui (+-%)	Vi
Measurement System									
Probe calibration	E.2.1	7.0	N	1	1	1	7.00	7.00	∞
Axial Isotropy	E.2.2	2.5	R	$\sqrt{3}$	$(1_Cp)^{1/2}$	$(1_Cp)^{1/2}$	1.02	1.02	∞
Hemispherical Isotropy	E.2.2	4.0	R	$\sqrt{3}$	$(Cp)^{1/2}$	$(Cp)^{1/2}$	1.63	1.63	∞
Boundary effect	E.2.3	1.0	R	$\sqrt{3}$	1	1	0.58	0.58	∞
Linearity	E.2.4	5.0	R	$\sqrt{3}$	1	1	2.89	2.89	∞
System detection limits	E.2.5	1.0	R	$\sqrt{3}$	1	1	0.58	0.58	∞
Modulation response	E.2.5	0	R	$\sqrt{3}$	0	0	0.0	0.0	∞
Readout Electronics	E.2.6	0.02	N	1	1	1	0.02	0.02	∞
Reponse Time	E.2.7	3.0	R	$\sqrt{3}$	1	1	1.73	1.73	∞
Integration Time	E.2.8	2.0	R	$\sqrt{3}$	1	1	1.15	1.15	∞
RF ambient Conditions – Noise	E.6.1	3.0	R	$\sqrt{3}$	1	1	1.73	1.73	∞
RF ambient Conditions - Reflections	E.6.1	3.0	R	$\sqrt{3}$	1	1	1.73	1.73	∞
Probe positioner Mechanical Tolerance	E.6.2	2.0	R	$\sqrt{3}$	1	1	1.15	1.15	∞
Probe positioning with respect to Phantom Shell	E.6.3	0.05	R	$\sqrt{3}$	1	1	0.03	0.03	∞
Extrapolation, interpolation and integration Algorithms for Max.	E.5.2	5.0	R	$\sqrt{3}$	1	1	2.89	2.89	∞

SAR Evaluation									
Dipole									
Dipole axis to liquid Distance	8,E.4.2	1.00	N	$\sqrt{3}$	1	1	0.58	0.58	N-1
Input power and SAR drift measurement	8,6.6.2	12.02	R	$\sqrt{3}$	1	1	6.94	6.94	∞
Deviation of experimental dipole from numerical dipole	E.6.4	5.5	R	$\sqrt{3}$	1	1	3.20	3.20	∞
Phantom and Tissue Parameters									
Phantom Uncertainty (Shape and thickness tolerances)	E.3.1	0.05	R	$\sqrt{3}$	1	1	0.03	0.03	∞
Uncertainty in SAR correction for deviations in permittivity and conductivity	E.3.2	2.0	R	$\sqrt{3}$	1	0.84	1.10	1.10	∞
Liquid conductivity - deviation from target value	E.3.2	5.00	R	$\sqrt{3}$	0.64	0.43	1.85	1.24	
Liquid conductivity - measurement uncertainty	E.3.3	5.00	N	1	0.64	0.43	3.20	2.15	
Liquid permittivity - deviation from target value	E.3.2	0.37	R	$\sqrt{3}$	0.6	0.49	0.13	0.10	
Liquid permittivity - measurement uncertainty	E.3.3	10.00	N	1	0.6	0.49	6.00	4.90	M
Combined Standard Uncertainty			RSS				12.00	11.50	
Expanded Uncertainty (95% Confidence interval)			K=2				23.39	22.43	

Annex A. Plots of System Performance Check

MEASUREMENT 1

For Body Liquid

Type: Validation measurement (Fast, 75.00 %)

Date of measurement: 05/07/2018

Measurement duration: 12 minutes 21 seconds

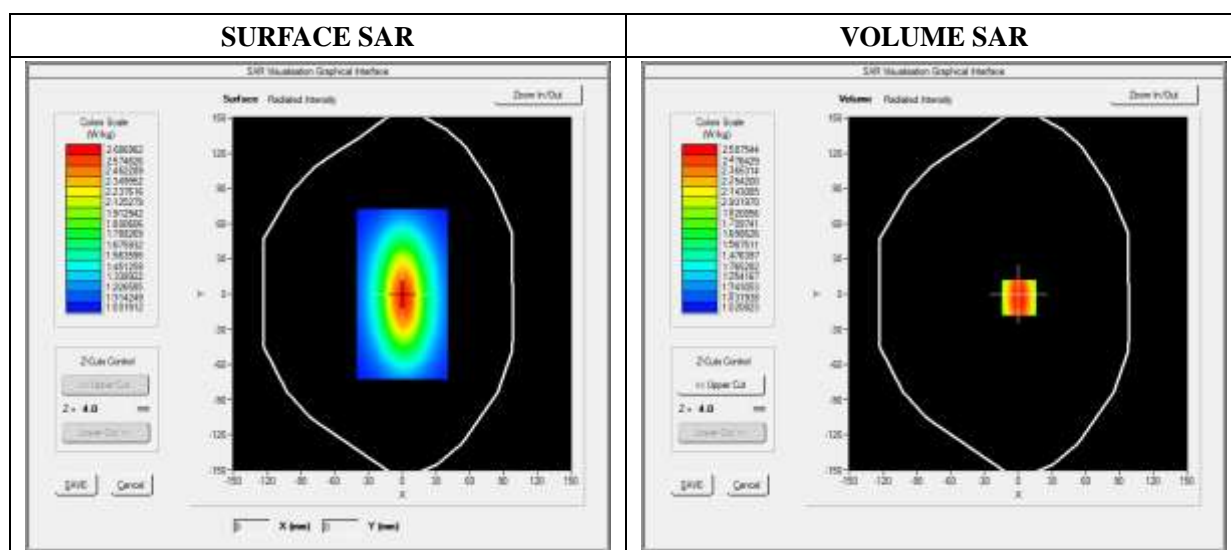
E-field Probe: SSE5 - SN 09/13 EP168; ConvF: 7.13; Calibrated: 06/01/2017

A. Experimental conditions

Area Scan	dx=8mm dy=8mm
Zoom Scan	dx=8mm dy=8mm dz=5mm
Phantom	Validation plane
Device Position	Dipole
Band	CW835
Signal	Duty Cycle 1:1

B. SAR Measurement Results

Frequency (MHz)	835.000000
Relative Permittivity (real part)	54.851214
Conductivity (S/m)	0.951454
Power Variation (%)	0.901472
Ambient Temperature	21.1
Liquid Temperature	21.3

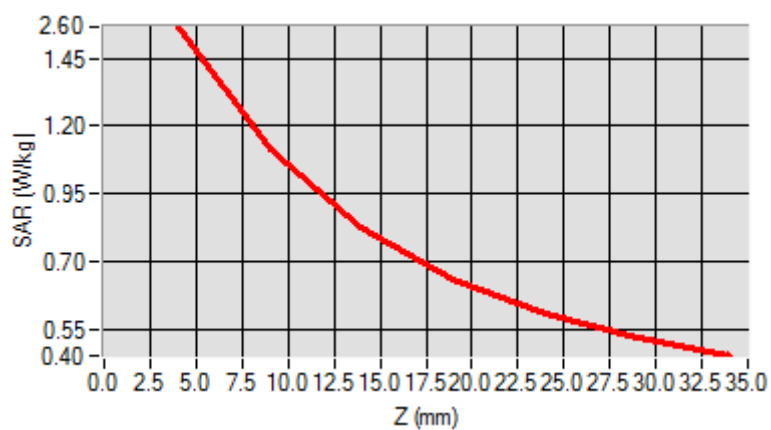


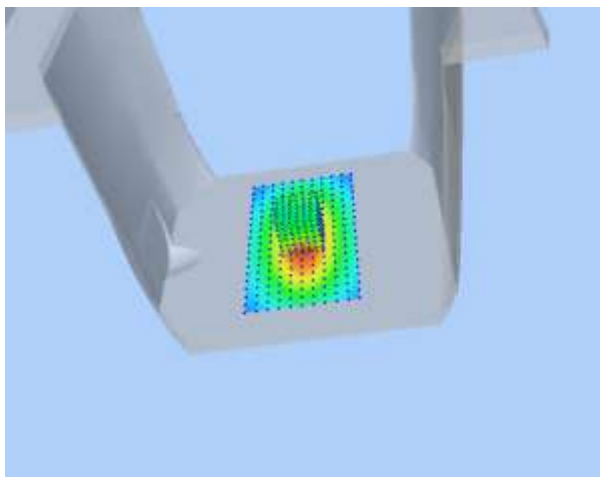
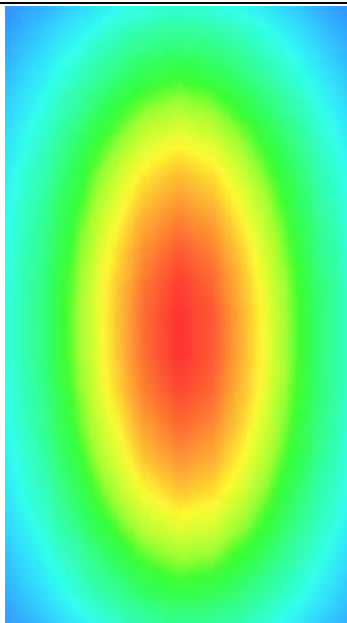
Maximum location: X=0.00, Y=0.00

SAR 10g (W/Kg)	1.028956
SAR 1g (W/Kg)	2.364211

Z Axis Scan

Z (mm)	0.00	4.00	9.00	14.00	19.00	24.00	29.00
SAR (W/Kg)	0.0000	2.5789	1.1300	0.8795	0.5940	0.5011	0.5100



3D screen shot	Hot spot position
	

MEASUREMENT 2

For Body Liquid

Type: Validation measurement (Fast, 75.00 %)

Date of measurement: 05/07/2018

Measurement duration: 12 minutes 21 seconds

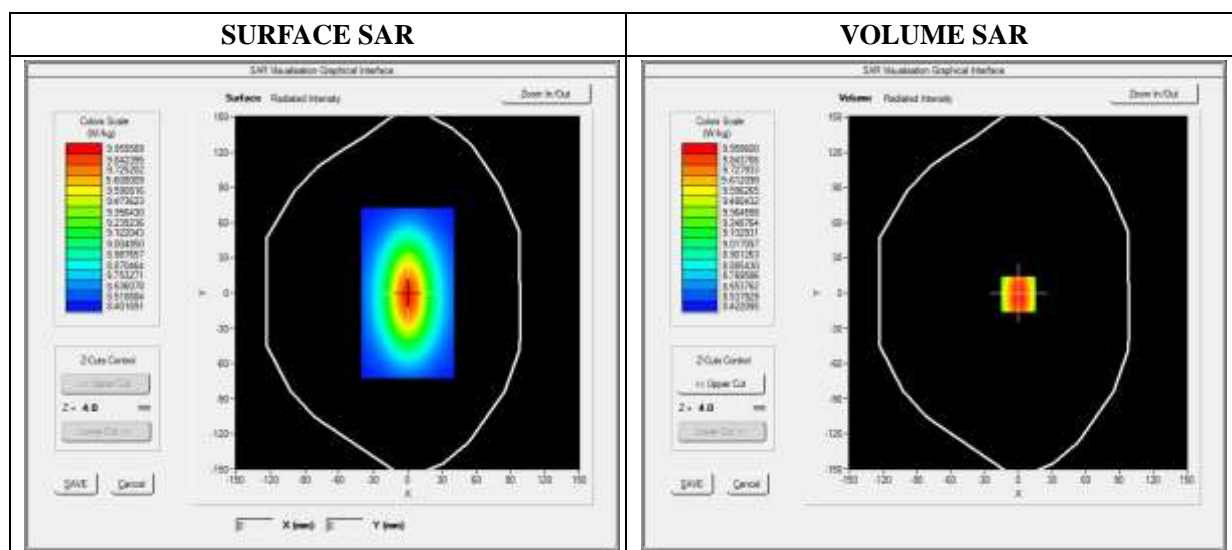
E-field Probe: SSE5 - SN 09/13 EP168; ConvF: 6.55; Calibrated: 06/01/2017

A. Experimental conditions

Area Scan	dx=8mm dy=8mm
Zoom Scan	dx=8mm dy=8mm dz=5mm
Phantom	Validation plane
Device Position	Dipole
Band	CW1900
Signal	Duty Cycle 1:1

B. SAR Measurement Results

Frequency (MHz)	1900.000000
Relative Permittivity (real part)	52.420415
Conductivity (S/m)	1.501966
Power Variation (%)	0.541872
Ambient Temperature	21.1
Liquid Temperature	21.3

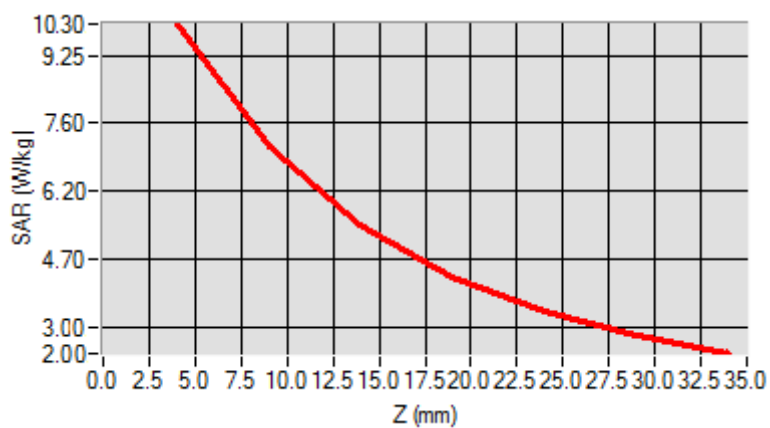


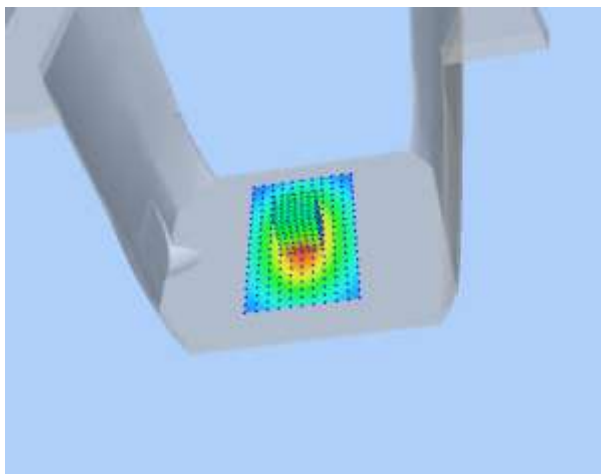
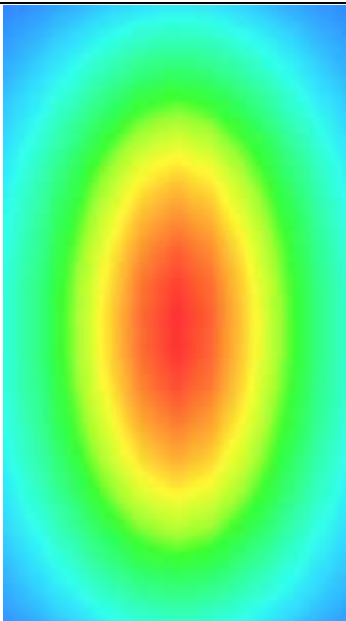
Maximum location: X=0.00, Y=0.00

SAR 10g (W/Kg)	5.134651
SAR 1g (W/Kg)	9.801550

Z Axis Scan

Z (mm)	0.00	4.00	9.00	14.00	19.00	24.00	29.00
SAR (W/Kg)	0.0000	10.2031	6.43001	4.9011	4.5325	3.1201	2.5024



3D screen shot	Hot spot position
	

MEASUREMENT 3

For Body Liquid

Type: Validation measurement (Fast, 75.00 %)

Date of measurement: 05/08/2018

Measurement duration: 12 minutes 21 seconds

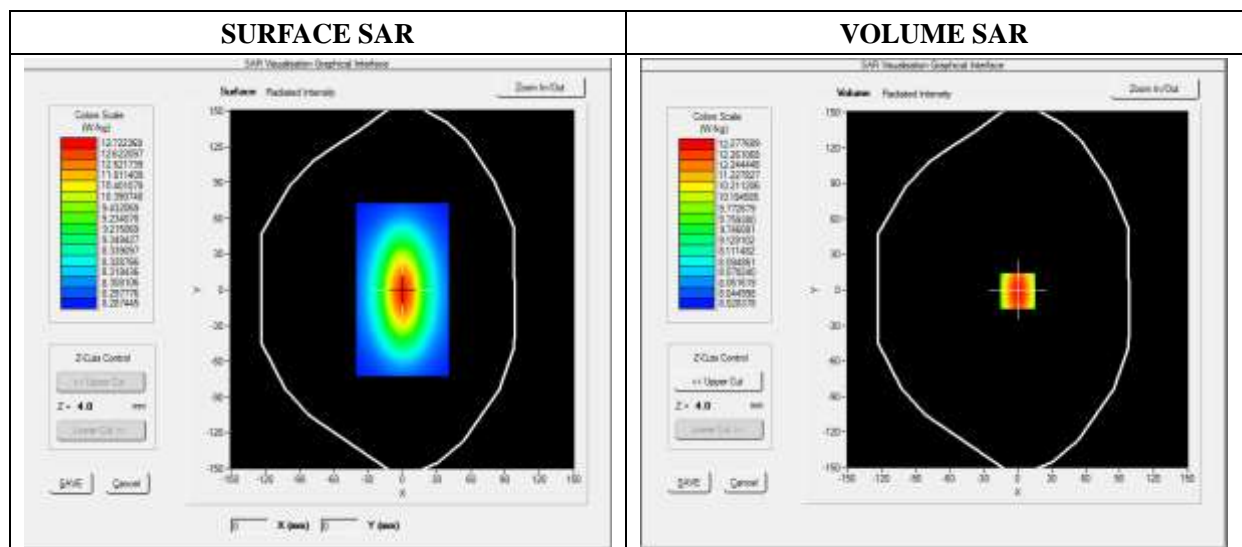
E-field Probe: SSE5 - SN 09/13 EP168; ConvF: 5.80; Calibrated: 06/01/2017

A. Experimental conditions

Area Scan	dx=8mm dy=8mm
Zoom Scan	dx=8mm dy=8mm dz=5mm
Phantom	Validation plane
Device Position	Dipole
Band	CW2450
Signal	CW (Crest factor: 1.0)

B. SAR Measurement Results

Frequency (MHz)	2450.000000
Relative Permittivity (real part)	52.315622
Conductivity (S/m)	2.001255
Power Variation (%)	0.542660
Ambient Temperature	21.1
Liquid Temperature	21.2

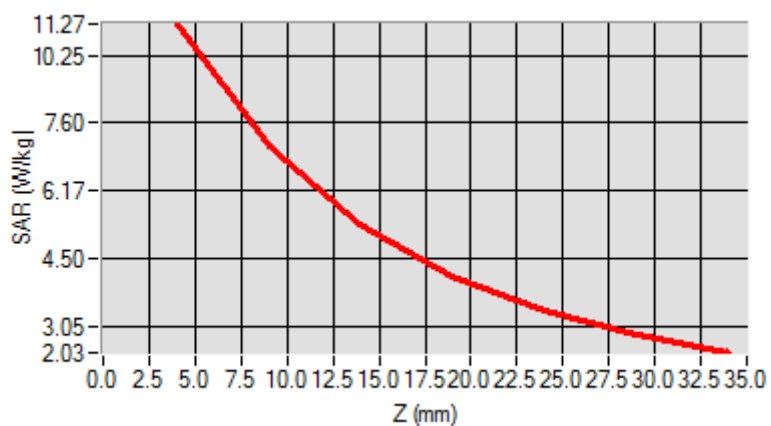


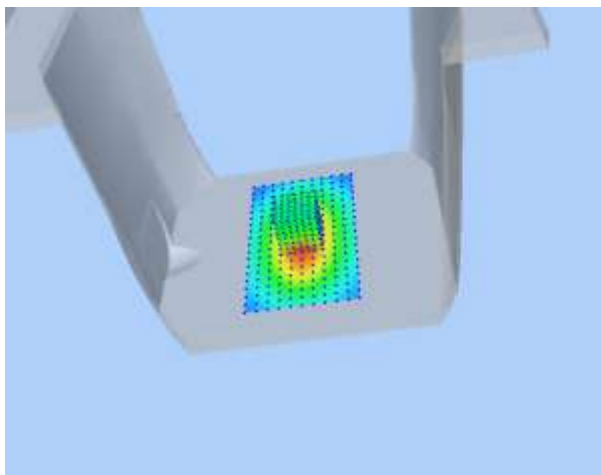
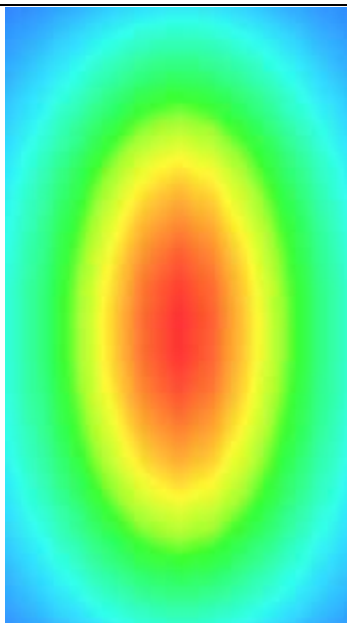
Maximum location: X=0.00, Y=0.00

SAR 10g (W/Kg)	6.351512
SAR 1g (W/Kg)	12.600533

Z Axis Scan

Z (mm)	0.00	4.00	9.00	14.00	19.00	24.00	29.00
SAR (W/Kg)	0.0000	12.1631	10.01221	9.2566	8.5623	6.3469	4.5626



3D screen shot	Hot spot position
	

Annex B. Plots of SAR Measurement

<u>TYPE</u>	<u>BAND</u>	<u>PARAMETERS</u>
Phone	GSM850	<u>Measurement 2:</u> Flat Plane with Front device position on Low Channel in GSM mode
Phone	GPRS850_2TX	<u>Measurement 7:</u> Flat Plane with Front device position on Low Channel in GPRS mode
Phone	GSM1900	<u>Measurement 12:</u> Flat Plane with Front device position on High Channel in GSM mode
Phone	GPRS1900_3TX	<u>Measurement 17:</u> Flat Plane with Front device position on High Channel in GPRS mode
Phone	WCDMA850_RMC	<u>Measurement 24:</u> Flat Plane with Front device position on Low Channel in WCDMA mode
Phone	WCDMA1900_RMC	<u>Measurement 29:</u> Flat Plane with Front device position on High Channel in WCDMA mode
Phone	WiFi_802.11b	<u>Measurement 36:</u> Flat Plane with Front device position on Low Channel in 802.11b mode
<i>Remark: SAR plot is showed the highest measured SAR in each exposure configuration, wireless mode and frequency band combination.</i>		

MEASUREMENT 2

Type: Phone measurement (Complete)

Date of measurement: 05/07/2018

Measurement duration: 12 minutes 3 seconds

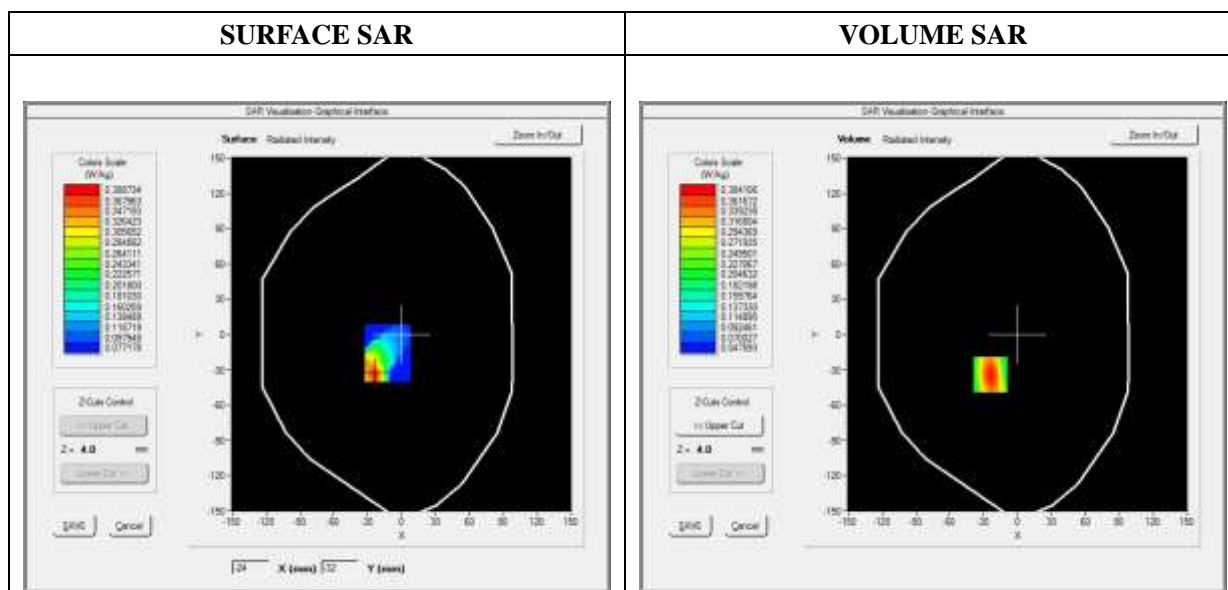
E-field Probe: SSE5 - SN 09/13 EP168; ConvF: 7.13; Calibrated: 06/01/2017

A. Experimental conditions

Area Scan	dx=8mm dy=8mm
Zoom Scan	dx=8mm dy=8mm dz=5mm
Phantom	Flat Plane
Device Position	Front
Band	GSM850
Channels	Low
Signal	TDMA (Crest factor: 8.0)

B. SAR Measurement Results

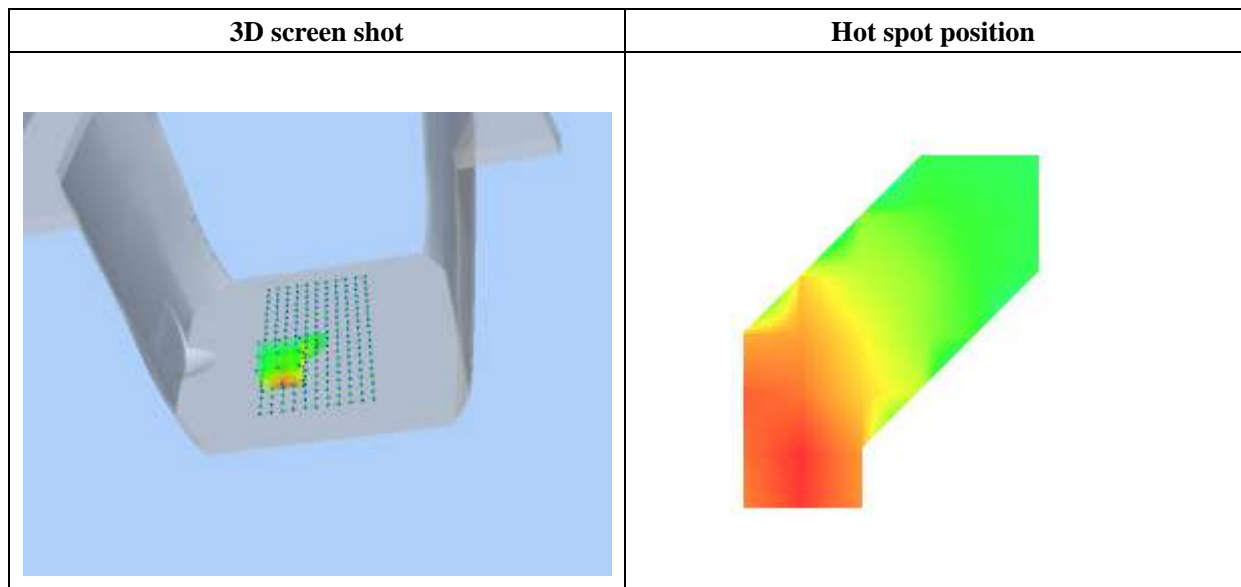
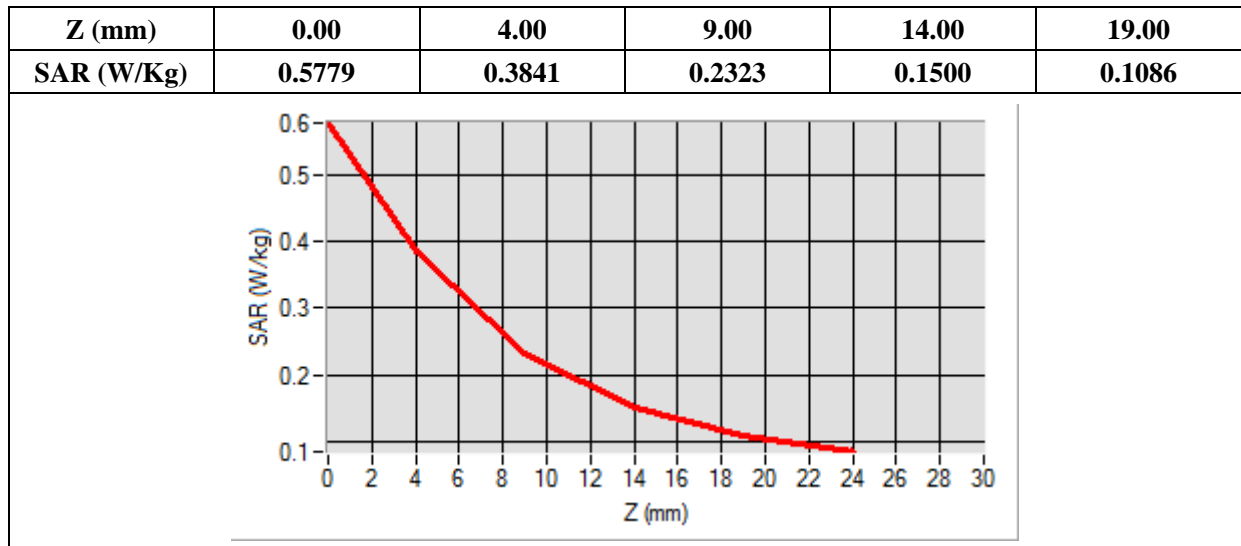
Frequency (MHz)	824.200000
Relative Permittivity (real part)	54.851214
Conductivity (S/m)	0.951454
Power Variation (%)	0.785060
Ambient Temperature	21.1
Liquid Temperature	21.3



Maximum location: X=-24.00, Y=-34.00

SAR Peak: 0.58 W/kg

SAR 10g (W/Kg)	0.220681
SAR 1g (W/Kg)	0.357988



MEASUREMENT 7

Type: Phone measurement (Complete)

Date of measurement: 05/07/2018

Measurement duration: 12 minutes 3 seconds

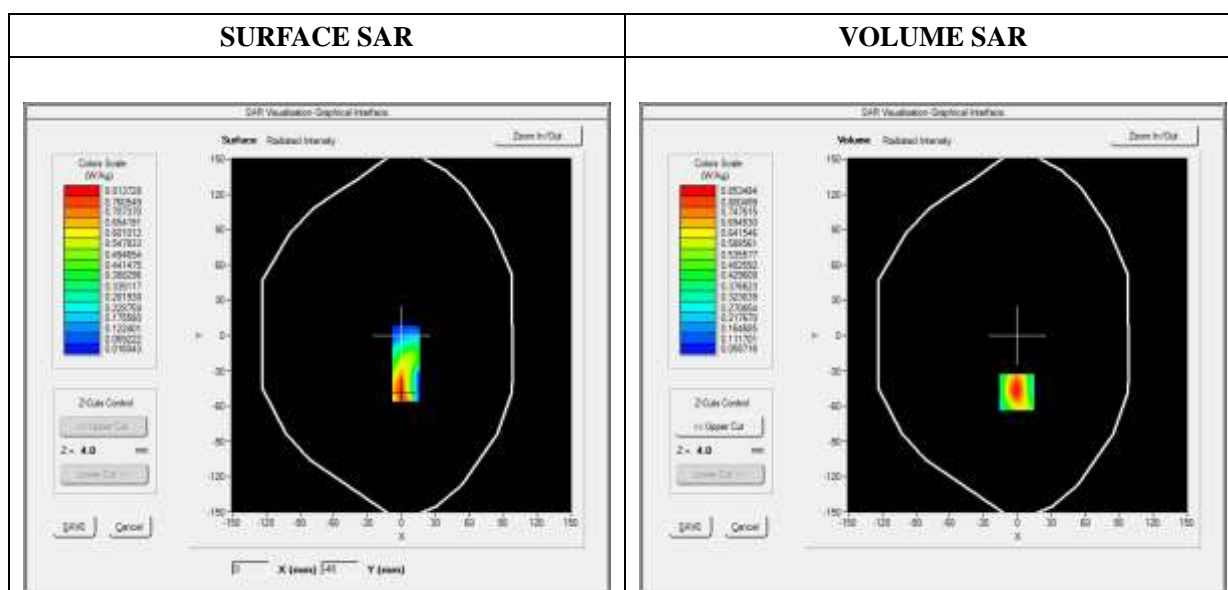
E-field Probe: SSE5 - SN 09/13 EP168; ConvF: 7.13; Calibrated: 06/01/2017

A. Experimental conditions

Area Scan	dx=8mm dy=8mm
Zoom Scan	dx=8mm dy=8mm dz=5mm
Phantom	Flat plane
Device Position	Front
Band	GPRS850_2TX
Channels	Low
Signal	Duty Cycle: 1:4

B. SAR Measurement Results

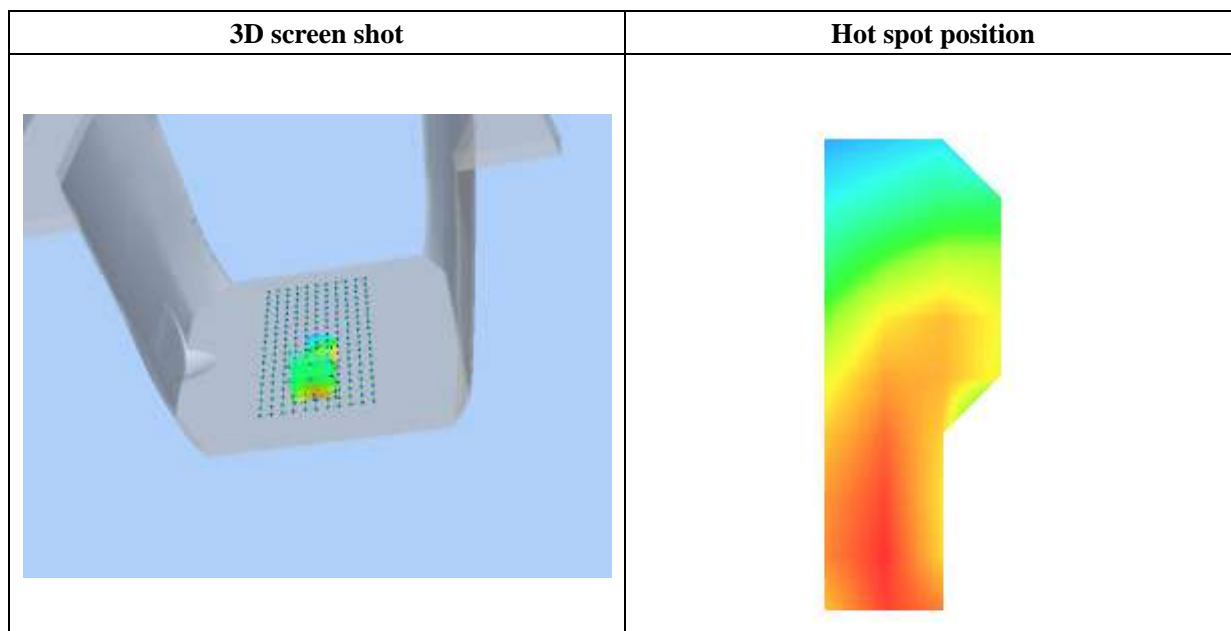
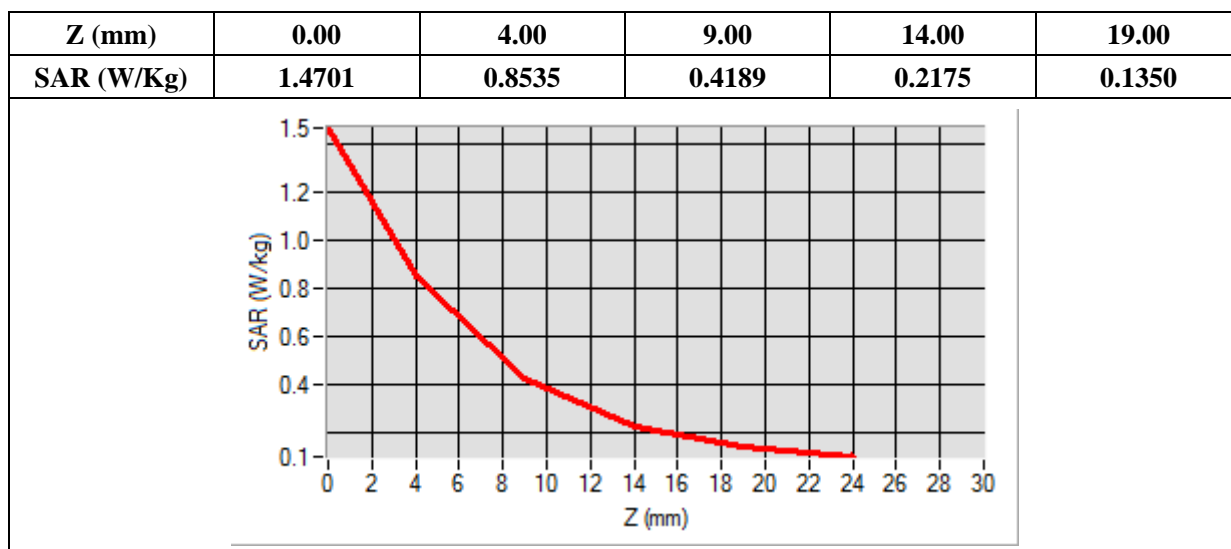
Frequency (MHz)	824.200000
Relative Permittivity (real part)	54.851214
Conductivity (S/m)	0.951454
Power Variation (%)	0.562472
Ambient Temperature	21.1
Liquid Temperature	21.3



Maximum location: X=-1.00, Y=-48.00

SAR Peak: 1.47 W/kg

SAR 10g (W/Kg)	0.411681
SAR 1g (W/Kg)	0.732194



MEASUREMENT 12

Type: Phone measurement (Complete)

Date of measurement: 05/07/2018

Measurement duration: 12 minutes 3 seconds

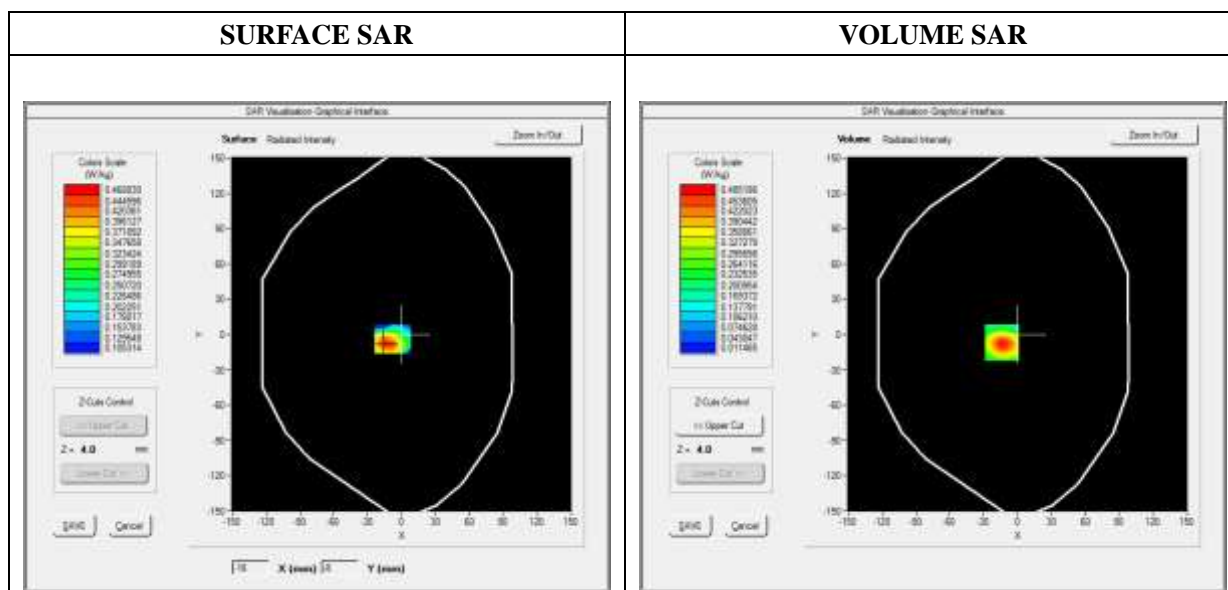
E-field Probe: SSE5 - SN 09/13 EP168; ConvF: 6.55; Calibrated: 06/01/2017

A. Experimental conditions

Area Scan	dx=8mm dy=8mm
Zoom Scan	dx=8mm dy=8mm dz=5mm
Phantom	Flat Plane
Device Position	Front
Band	GSM1900
Channels	High
Signal	TDMA (Crest factor: 8.0)

B. SAR Measurement Results

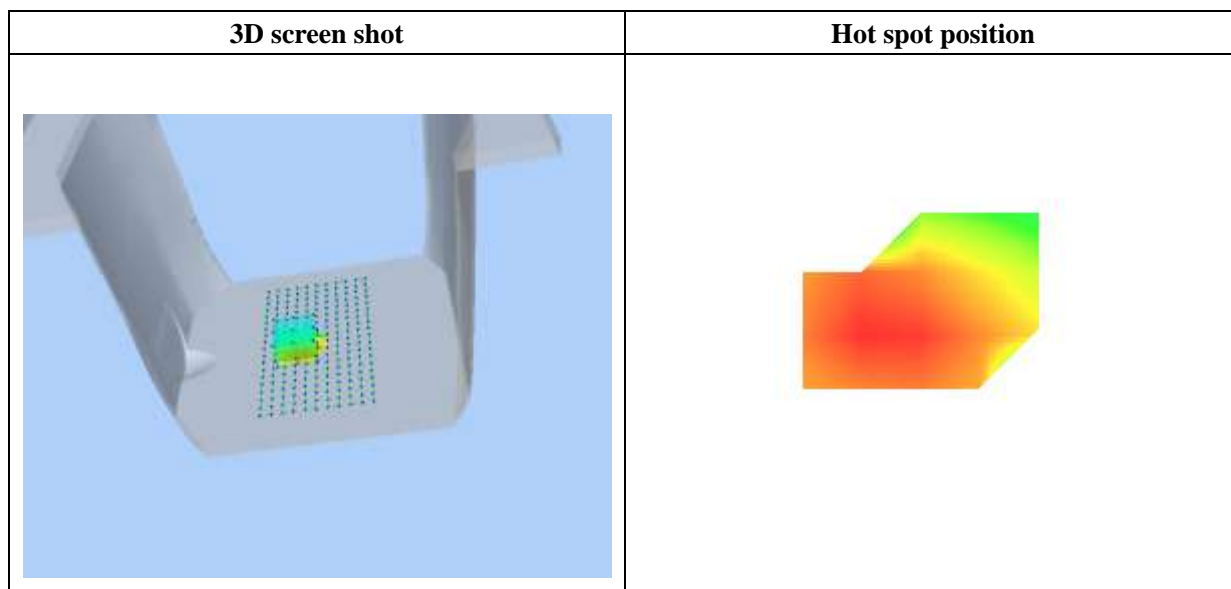
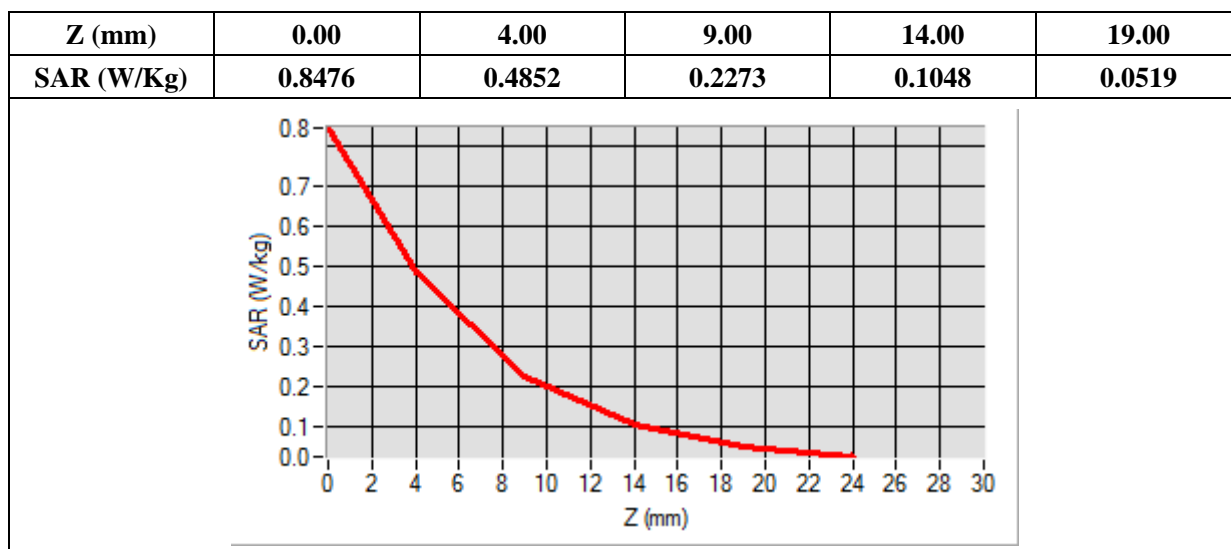
Frequency (MHz)	1909.800000
Relative Permittivity (real part)	52.420415
Conductivity (S/m)	1.501966
Power Variation (%)	0.568946
Ambient Temperature	21.1
Liquid Temperature	21.3



Maximum location: X=-14.00, Y=-7.00

SAR Peak: 0.85 W/kg

SAR 10g (W/Kg)	0.221451
SAR 1g (W/Kg)	0.448612



MEASUREMENT 17

Type: Phone measurement (Complete)

Date of measurement: 05/07/2018

Measurement duration: 12 minutes 3 seconds

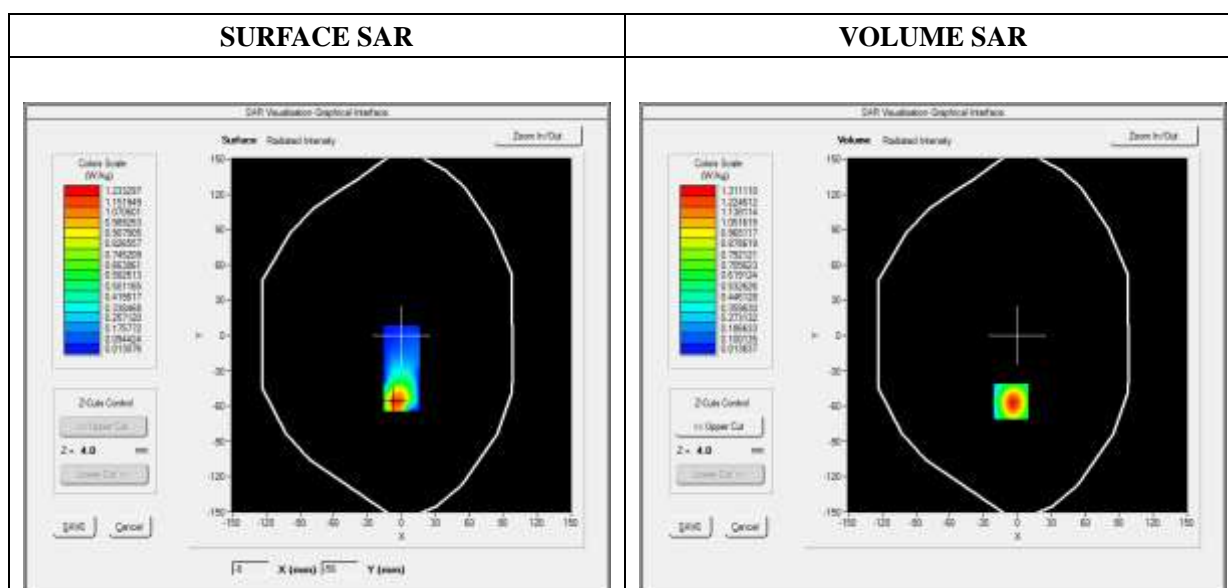
E-field Probe: SSE5 - SN 09/13 EP168; ConvF: 6.55; Calibrated: 06/01/2017

A. Experimental conditions

Area Scan	dx=8mm dy=8mm
Zoom Scan	dx=8mm dy=8mm dz=5mm
Phantom	Flat plane
Device Position	Front side
Band	GPRS1900_3TX
Channels	High
Signal	Duty Cycle: 1:2.66

B. SAR Measurement Results

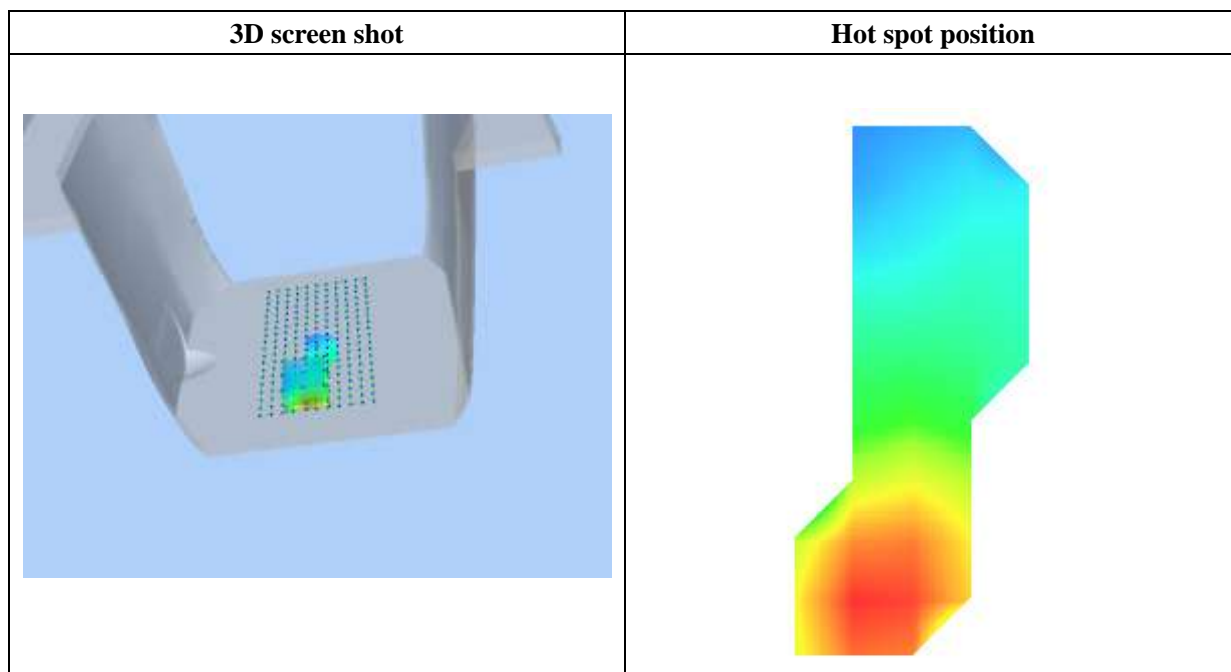
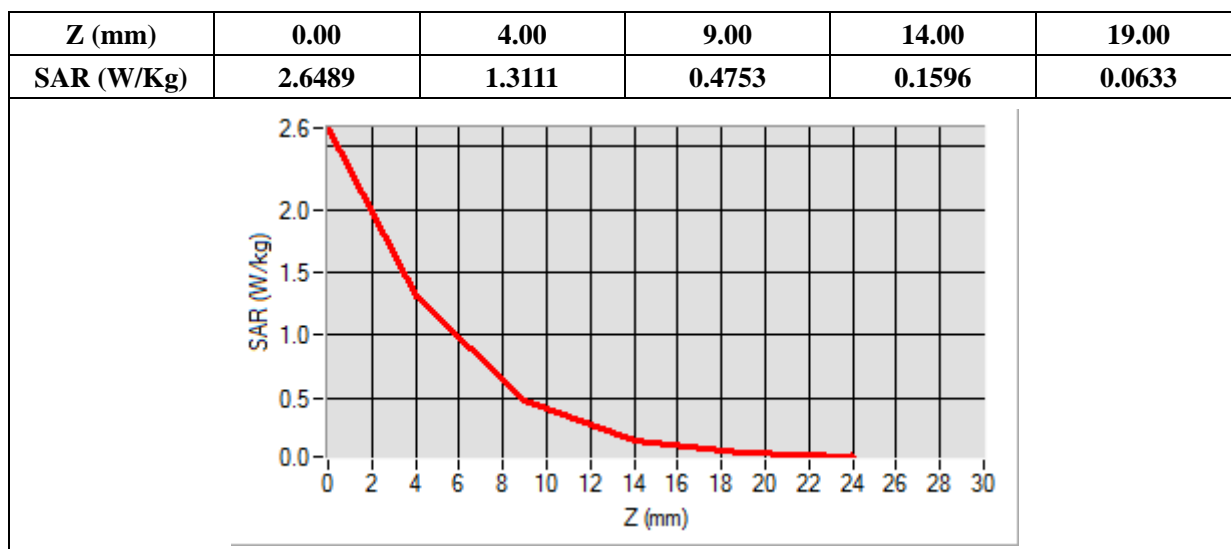
Frequency (MHz)	1909.800000
Relative Permittivity (real part)	52.420415
Conductivity (S/m)	1.501966
Power Variation (%)	0.986340
Ambient Temperature	21.1
Liquid Temperature	21.3



Maximum location: X=-6.00, Y=-56.00

SAR Peak: 2.67 W/kg

SAR 10g (W/Kg)	0.538538
SAR 1g (W/Kg)	1.129723



MEASUREMENT 24

Type: Phone measurement (Complete)

Date of measurement: 05/07/2018

Measurement duration: 12 minutes 3 seconds

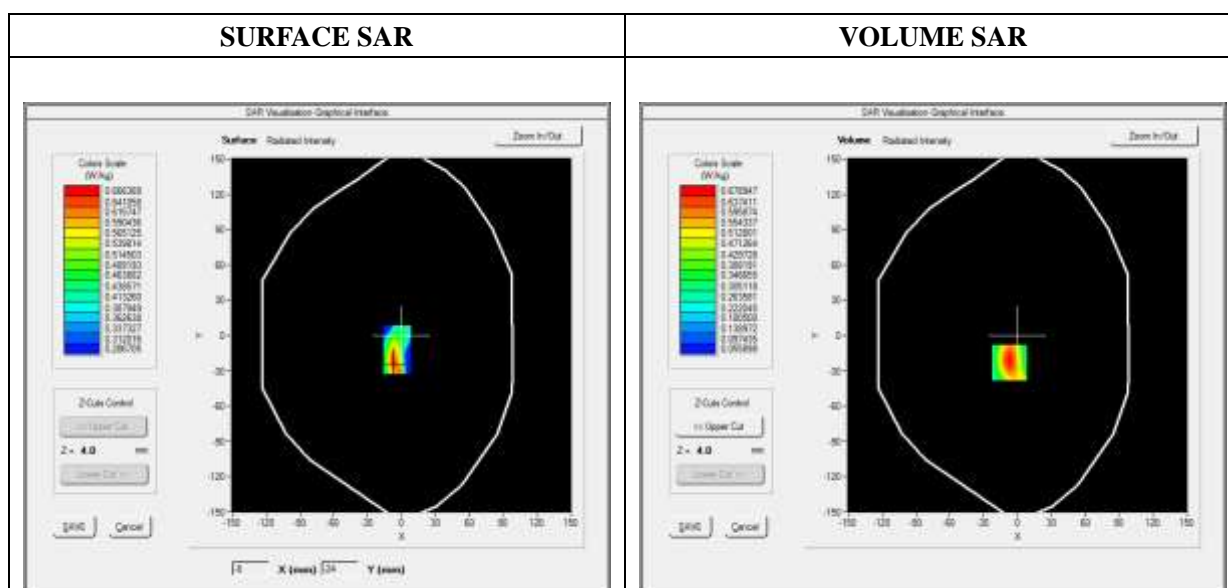
E-field Probe: SSE5 - SN 09/13 EP168; ConvF: 7.13; Calibrated: 06/01/2017

A. Experimental conditions

Area Scan	dx=8mm dy=8mm
Zoom Scan	dx=8mm dy=8mm dz=5mm
Phantom	Flat Plane
Device Position	Front
Band	WCDMA850_RMC
Channels	Low
Signal	Duty Cycle 1:1

B. SAR Measurement Results

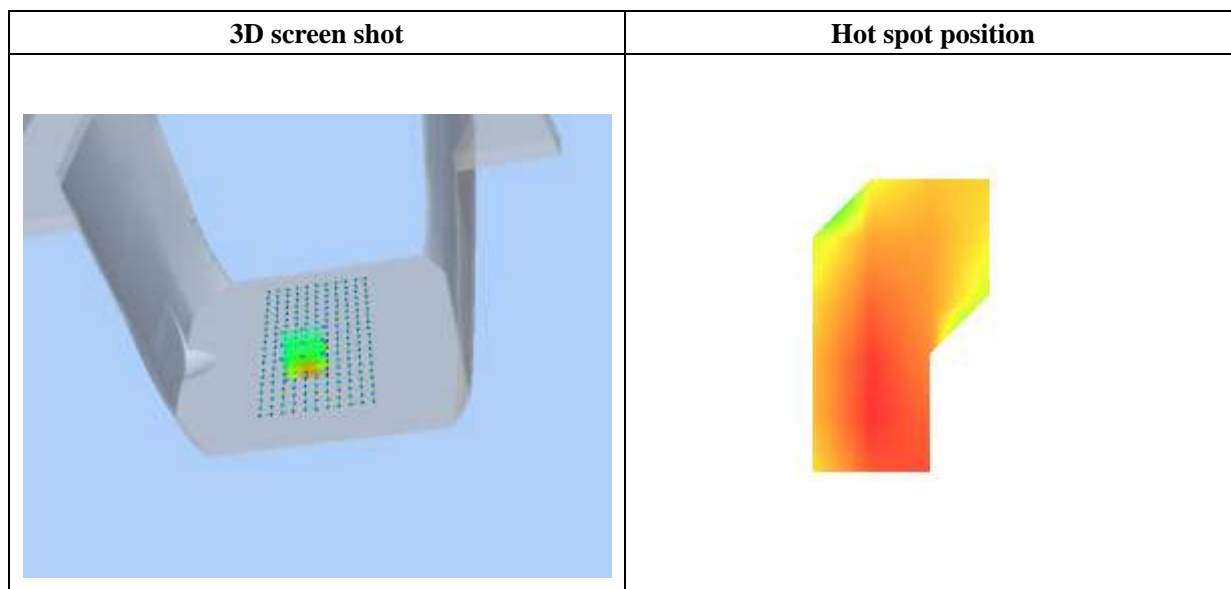
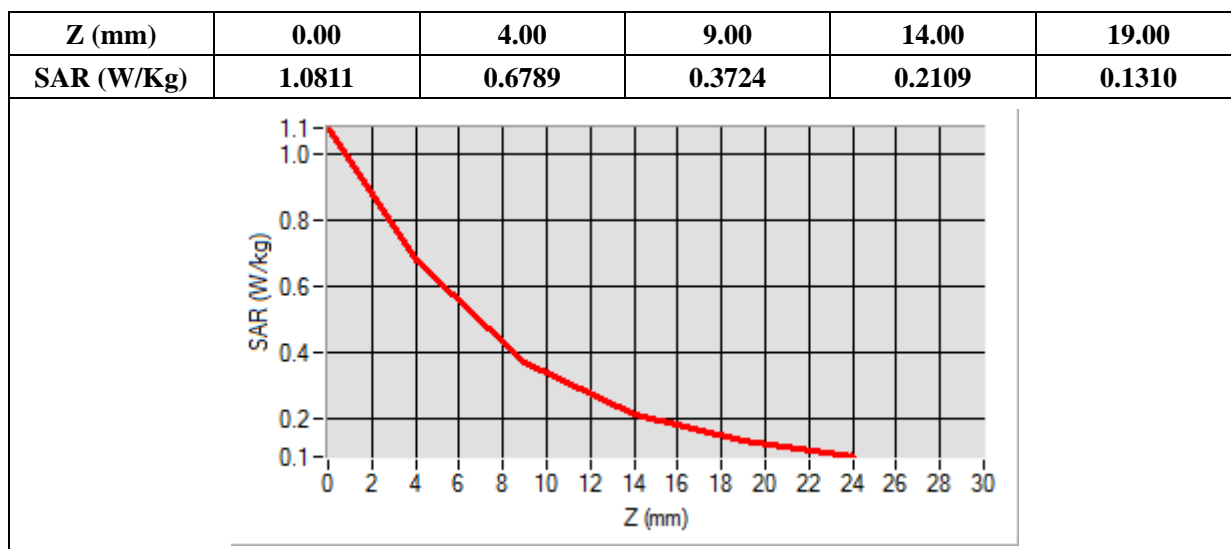
Frequency (MHz)	826.400000
Relative Permittivity (real part)	54.851214
Conductivity (S/m)	0.951454
Power Variation (%)	0.986458
Ambient Temperature	21.1
Liquid Temperature	21.3



Maximum location: X=-7.00, Y=-23.00

SAR Peak: 1.09 W/kg

SAR 10g (W/Kg)	0.346814
SAR 1g (W/Kg)	0.631172



MEASUREMENT 29

Type: Phone measurement (Complete)

Date of measurement: 05/07/2018

Measurement duration: 12 minutes 3 seconds

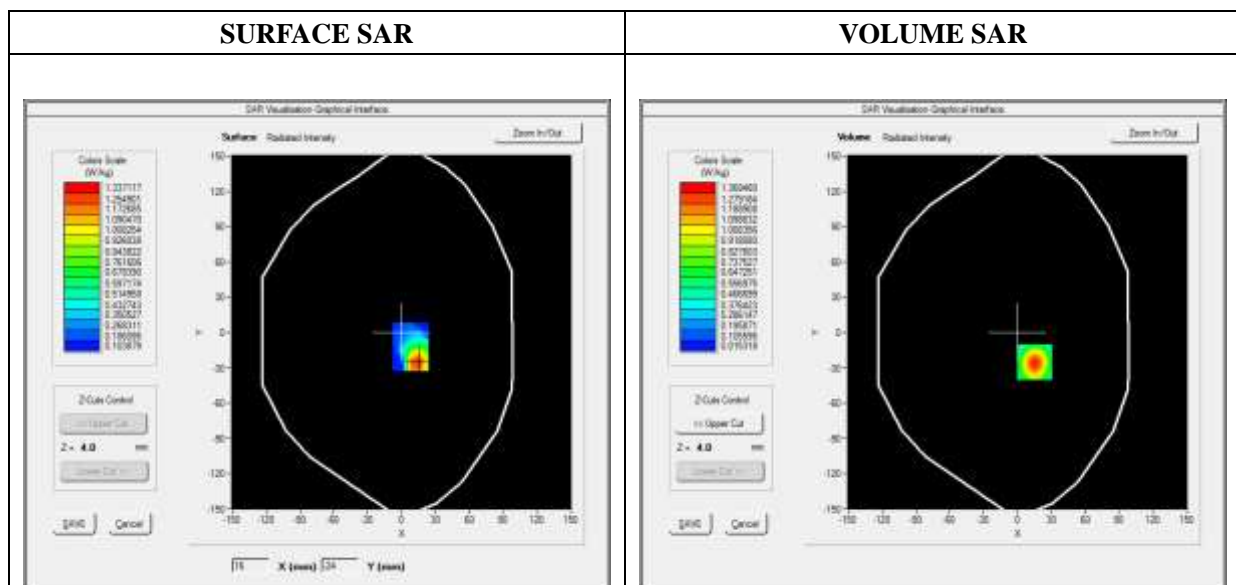
E-field Probe: SSE5 - SN 09/13 EP168; ConvF: 6.55; Calibrated: 06/01/2017

A. Experimental conditions

Area Scan	dx=8mm dy=8mm
Zoom Scan	dx=8mm dy=8mm dz=5mm
Phantom	Flat Plane
Device Position	Front
Band	WCDMA1900_RMC
Channels	High
Signal	Duty Cycle 1:1

B. SAR Measurement Results

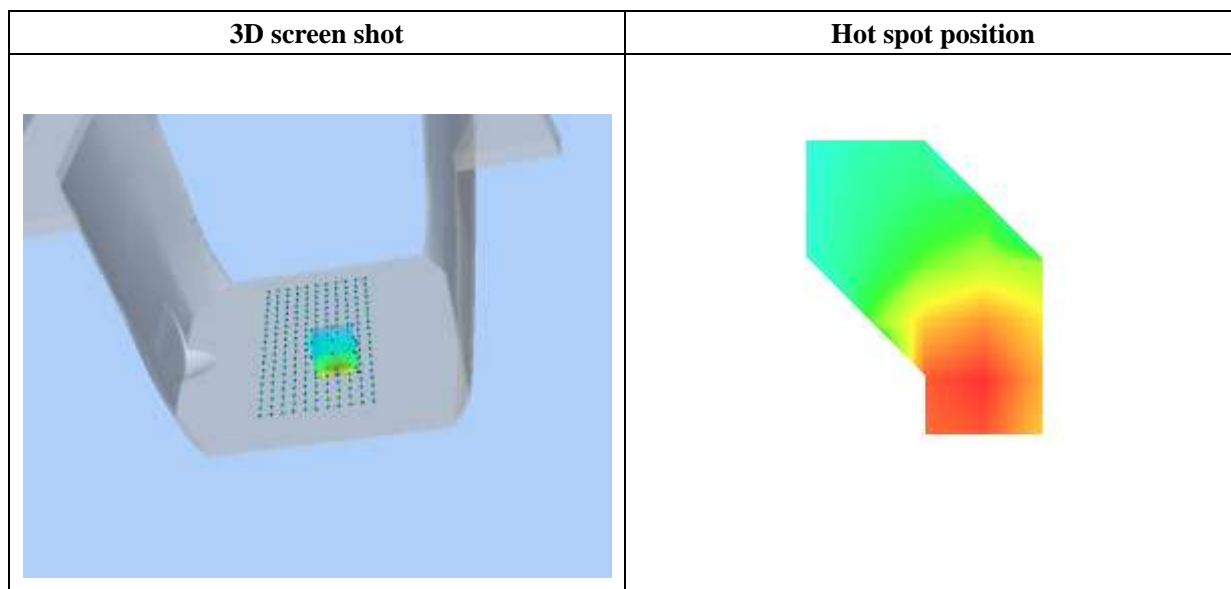
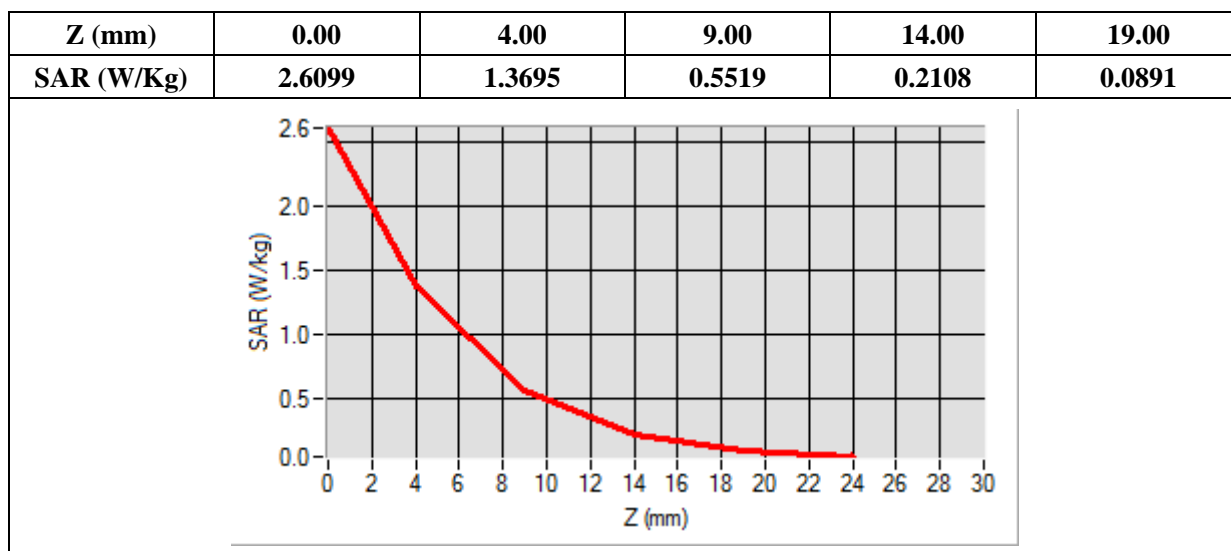
Frequency (MHz)	1907.600000
Relative Permittivity (real part)	52.420415
Conductivity (S/m)	1.501966
Power Variation (%)	0.687492
Ambient Temperature	21.1
Liquid Temperature	21.3



Maximum location: X=15.00, Y=-25.00

SAR Peak: 2.61 W/kg

SAR 10g (W/Kg)	0.565657
SAR 1g (W/Kg)	1.157438



MEASUREMENT 36

Type: Phone measurement (Complete)

Date of measurement: 05/08/2018

Measurement duration: 12 minutes 3 seconds

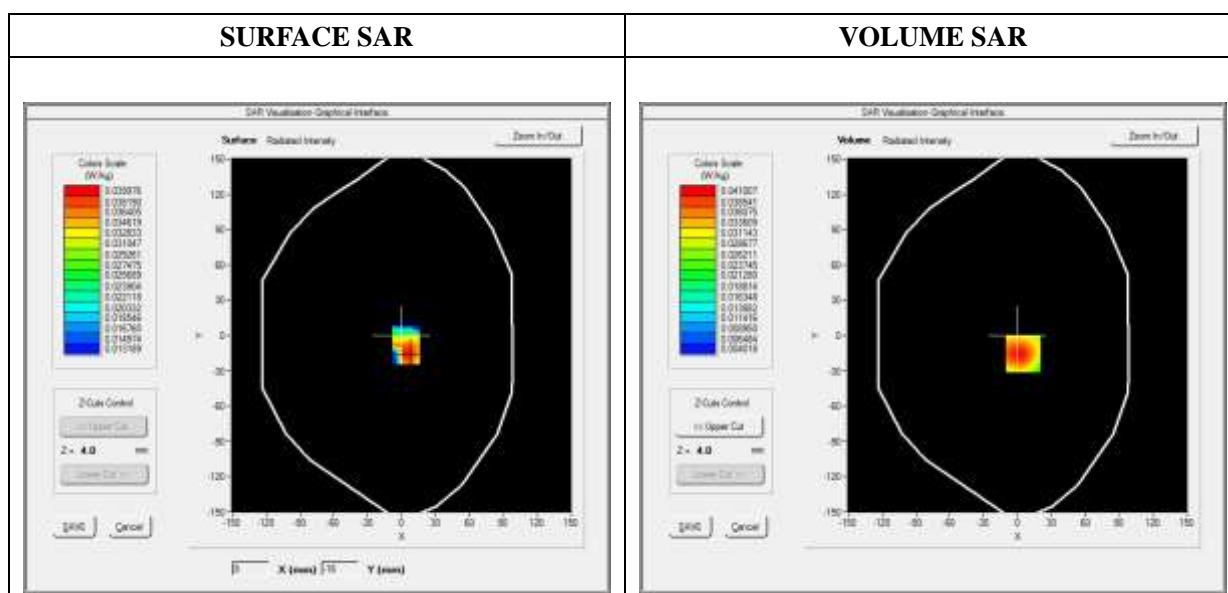
E-field Probe: SSE5 - SN 09/13 EP168; ConvF: 5.80; Calibrated: 06/01/2017

A. Experimental conditions

Area Scan	dx=8mm dy=8mm
Zoom Scan	dx=8mm dy=8mm dz=5mm
Phantom	Flat Plane
Device Position	Front
Band	WiFi_802.11b
Channels	Low
Signal	Duty Cycle: 1:1

B. SAR Measurement Results

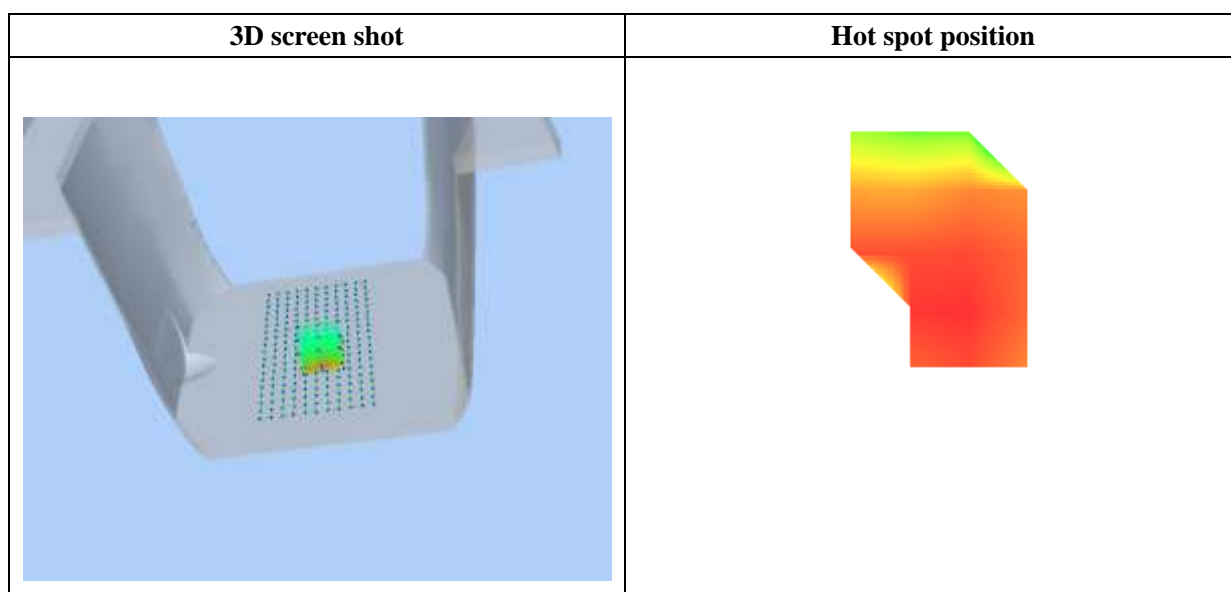
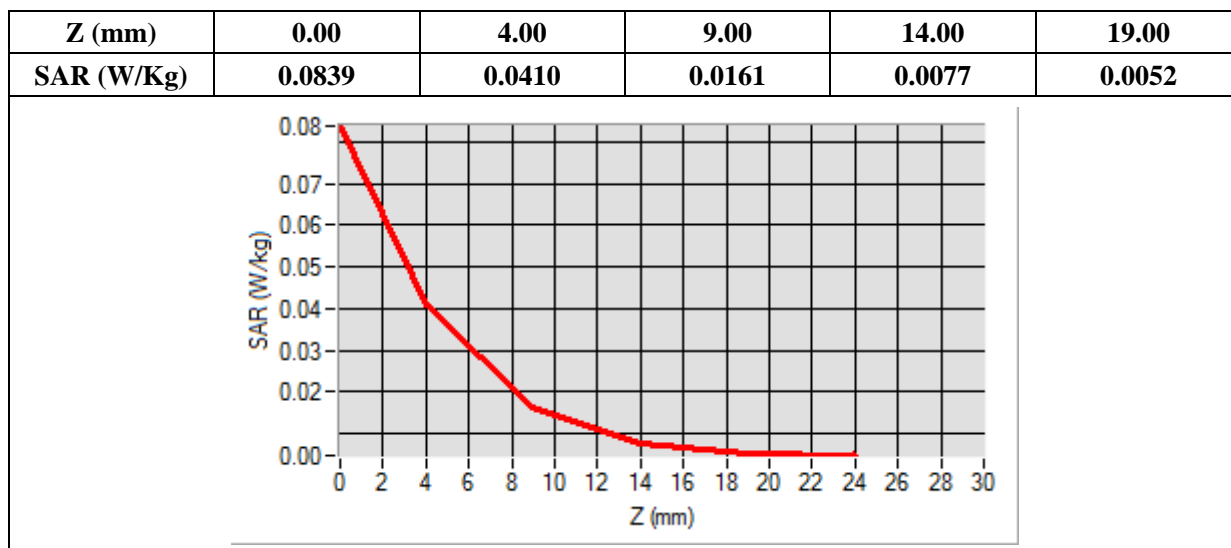
Frequency (MHz)	2412.000000
Relative Permittivity (real part)	52.315622
Conductivity (S/m)	2.001255
Power Variation (%)	0.968546
Ambient Temperature	21.1
Liquid Temperature	21.2



Maximum location: X=5.00, Y=-16.00

SAR Peak: 0.08 W/kg

SAR 10g (W/Kg)	0.020788
SAR 1g (W/Kg)	0.039627

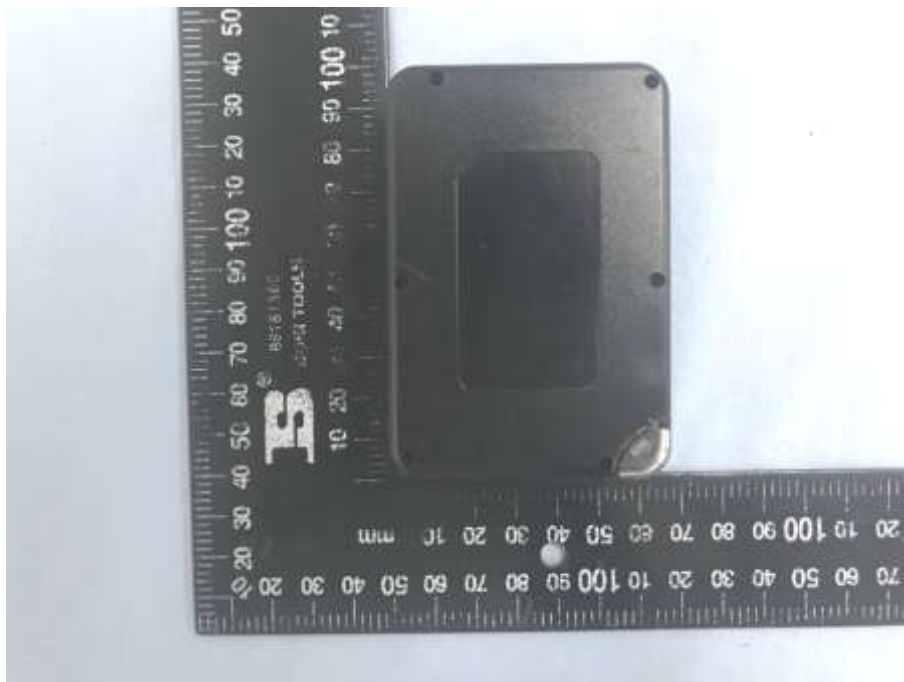


Annex C. EUT Photos

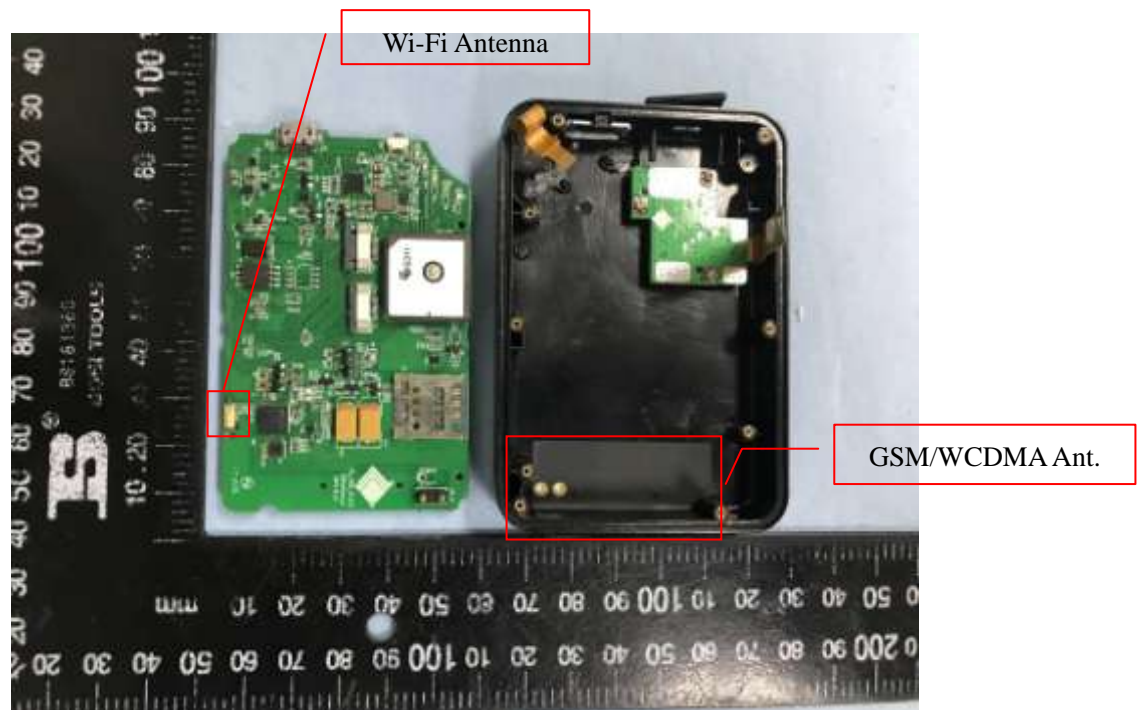
EUT View Front



EUT View Back



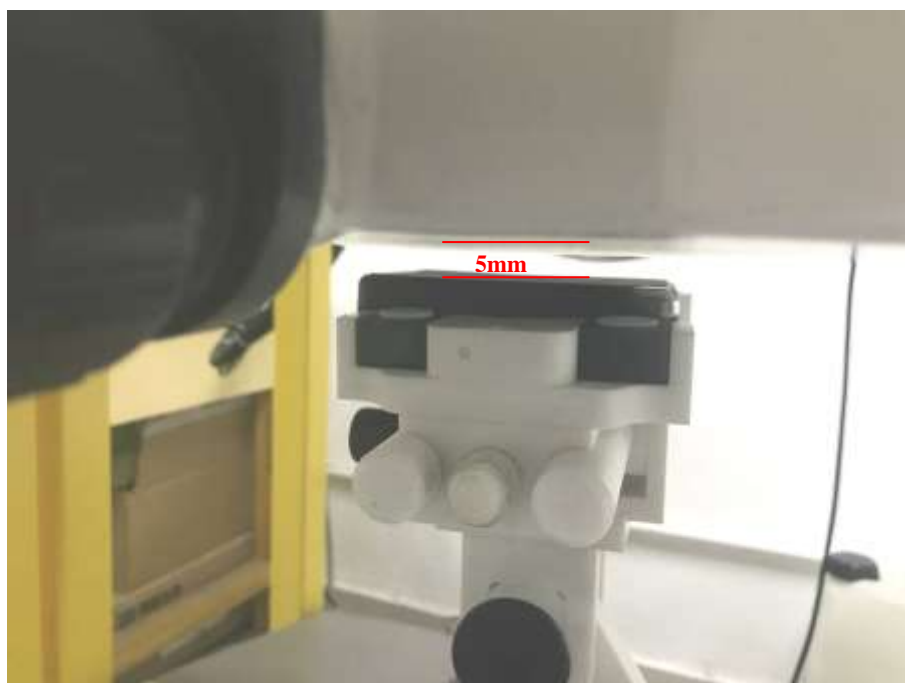
Antenna View



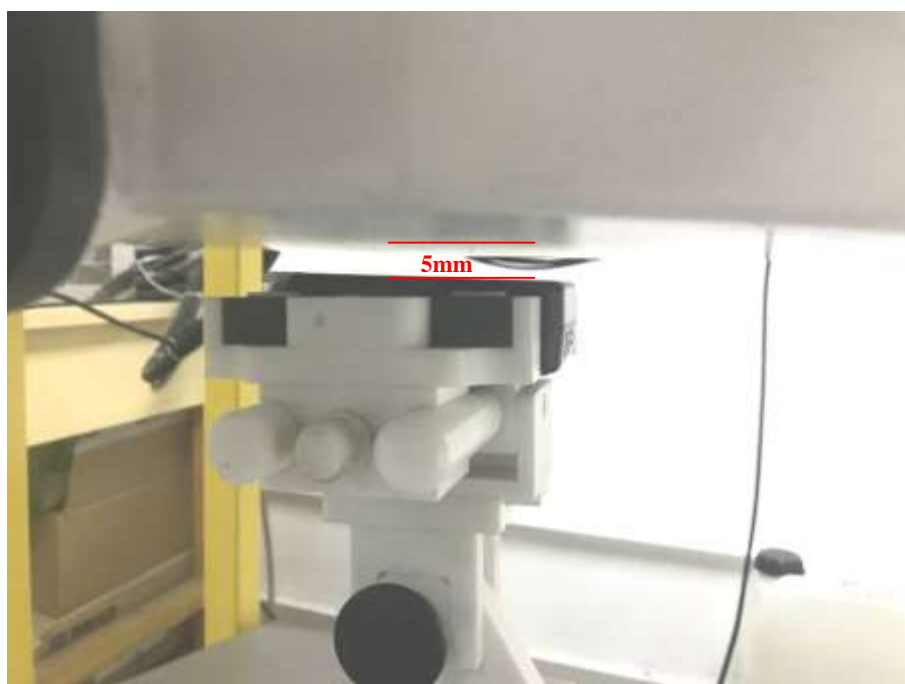
Annex D. Test Setup Photos

Body mode Exposure Conditions

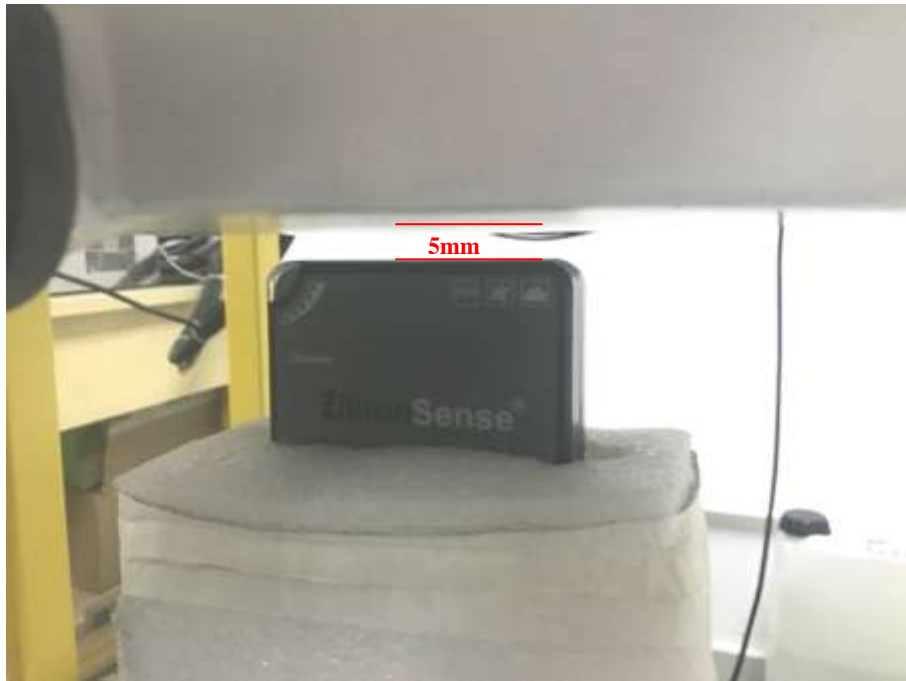
Body Front



Body Back



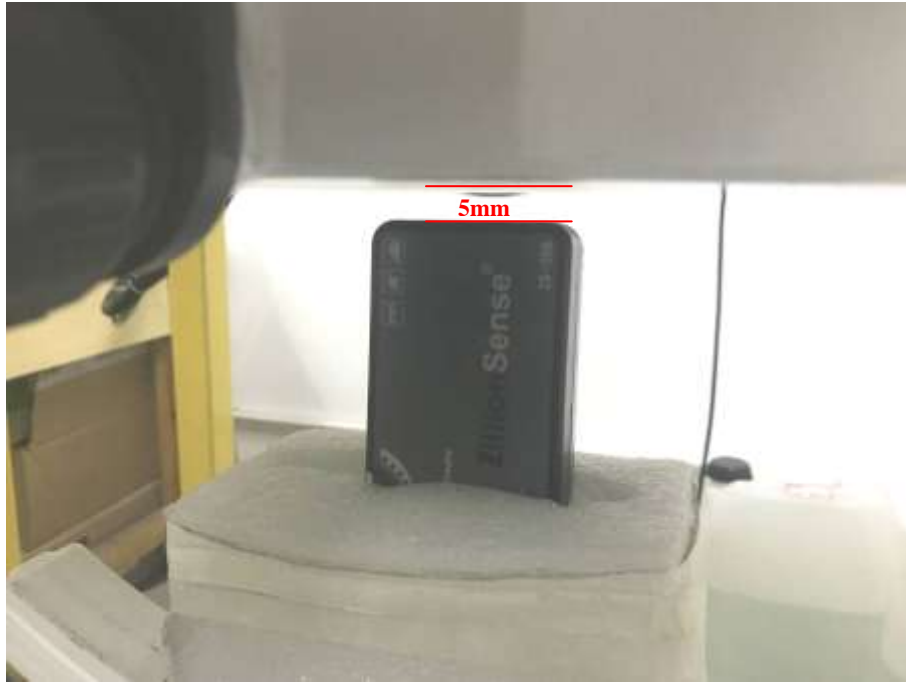
Body Right



Body Left



Body Bottom



Annex E. Calibration Certificate

Please refer to the Exhibit for the Calibration Certificate

******* END OF REPORT *******